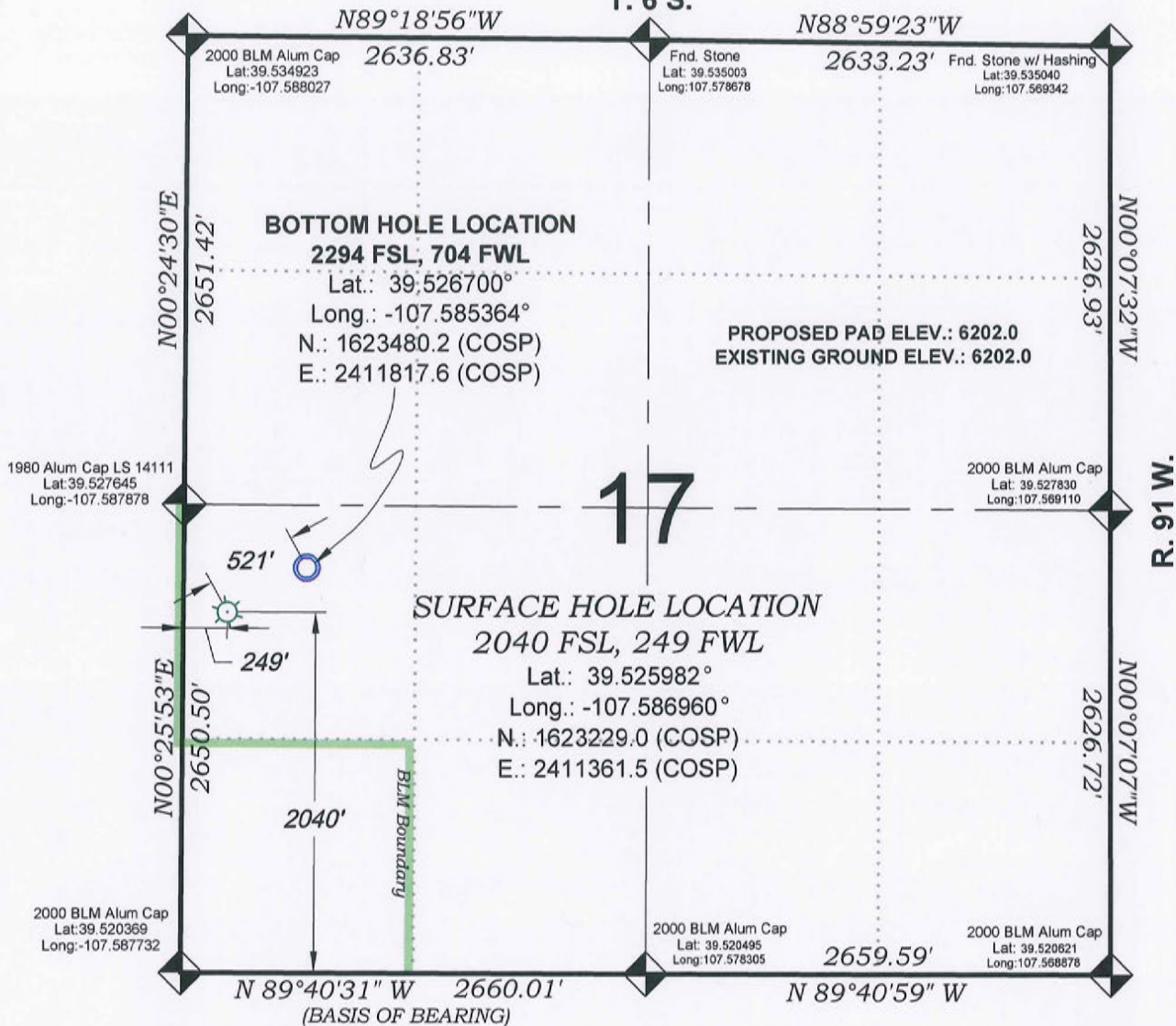


Jolley KP 313-17

T. 6 S.



SEE CONSTRUCTION LAYOUT
PLAT FOR VISIBLE IMPROVEMENTS
WITHIN 500' OF THIS LOCATION



SURVEYORS STATEMENT

I, MICHAEL J. LANGHORNE, A REGISTERED LAND SURVEYOR IN THE STATE OF COLORADO DO HEREBY CERTIFY THAT THE SURVEY SHOWN HEREON WAS PREPARED UNDER MY DIRECT SUPERVISION AND HAS BEEN STAKED ON THE GROUND AS SHOWN ON THE PLAT AND CHECKING THAT THIS MAP IS A TRUE REPRESENTATION THEREOF.

Michael J. Langhorne
MICHAEL J. LANGHORNE, COLORADO REGISTRATION NO. 36572
FOR AND ON BEHALF OF
BOOKCLIFF SURVEY SERVICES, INC.

REFERENCES

- 1) 2000 DEPENDENT RE-SURVEY T. 6 S., R. 91 W., 6 th P.M (GLO NOTES)
- 2) U.S.G.S. QUAD: NEW CASTLE, CO

REVISED: 1/27/14

136 East Third Street
Rifle, Colorado
81650 Ph. (970)
625-2720 Fax (970)
625-2773

BOOKCLIFF
Survey Services, Inc.

SURVEY DATE: 1/12/12
MAP DATE: 1/17/12
SCALE: 1" = 1000'
PLAT: 1 of 1
PROJECT: Williams Valley

- LEGEND -

FIELD LOCATED SECTION
MONUMENTS AS DESCRIBED

FIELD SURVEYED
WELL LOCATION

CALCULATED BOTTOM
HOLE LOCATION

CALCULATED SECTION
CORNER LOCATION

NOTES

- 1) ELEVATIONS BASED ON N.A.V.D. 1988 PUBLISHED COORDINATES.
- 2) LATITUDES AND LONGITUDES ARE BASE ON NAD 83, PUBLISHED COORDINATES
- 3) STATE PLANE COORDINATES ARE BASED ON COLORADO CENTRAL ZONE, U.S. SURVEY FEET.
- 4) ELEVATION MASK SET TO 15"
- 5) GPS OPERATOR J. KIRKPATRICK, OBSERVED A PDOP OF 2.4 FOR SURVEY POINT NUMBER 54042.
- 6) SURFACE AND BOTTOM HOLE LOCATIONS ARE MEASURED 90° FROM SECTION LINES.

WELL LOCATION PLAT Prepared for:
WPXENERGY. WPX Energy Rocky Mountain, LLC

NW1/4 SW1/4, SECTION 17
T. 6 S., R. 91 W. of the 6th. P.M.
GARFIELD COUNTY, COLORADO



K:\2010 Williams Valley\WPX 13-17\2011 KP 13-17.dwg, 1/27/2014 7:51:05 AM