



OXY

Rev 3



A Schlumberger Company

WELL			SMU 8-15-D			FIELD			CO, Huerfano County (NAD 83 SZ)			STRUCTURE			OXY Sec xx-xx-xx (SMU 8-15-D)		
Magnetic Parameters			Surface Location			NAD83 Colorado State Plane, Southern Zone, US Feet			Miscellaneous			SMU 8-15-D			TVD Ref: RKB(8630ft above MSL)		
Model: BGGM 2013			Lat: N 37 42 27.120			Northing: 1379124.76 fUS			Grid Conv: 0.175°			Slot: SMU 8-15-D			Plan: R3 eem 11Dec13		
Dip: 64.689°			Lon: W 105 12 54.600			Easting: 3082399.09 fUS			Scale Fact: 0.99994783			Srvy Date: November 11, 2013					
Date: November 11, 2013																	
Mag Dec: 8.602°			FS: 51263.0nT														

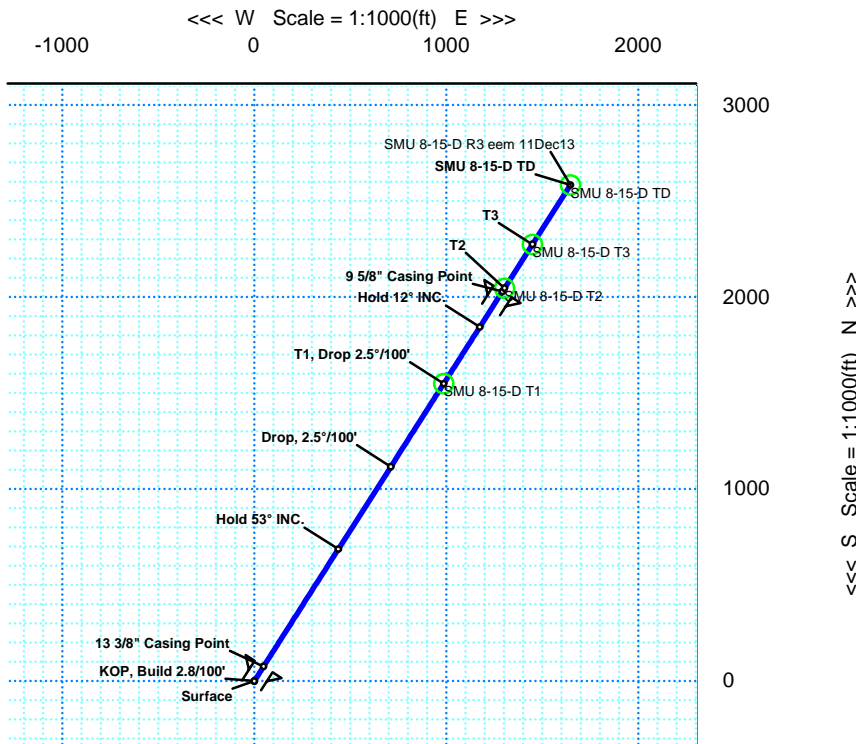
Proposal



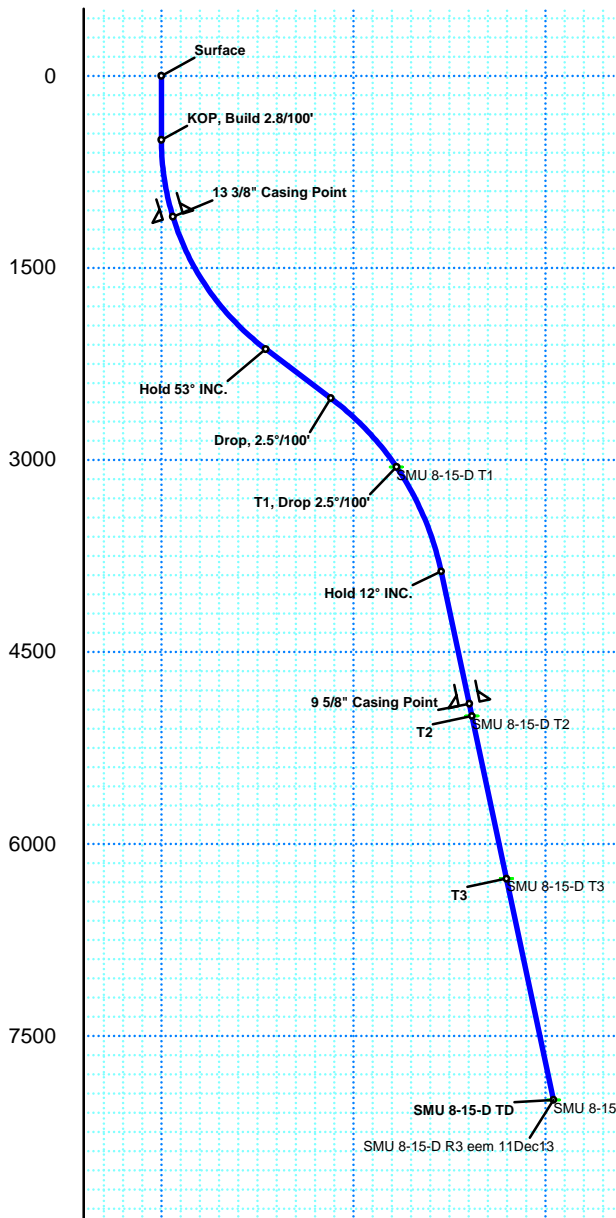
Quality Control

Date Drawn: December 11, 2013 03:49:55 PM
Drawn by: Matt VanderSchaaf
Checked by:
Client OK:

True North
Tot Corr (M->T) 8.6021°
Mag Dec (8.602°)
Grid Conv (0.175°)



TVD Scale = 1:1500(ft)



Vertical Section (ft) Azim = 32.5° Scale = 1:1500(ft) Origin = 0 N-S, 0 E-W

Surface Location
Northing: 1379124.76 Easting: 3082399.09

Target Description			Grid Coord			Local Coord		
Target Name	Shape	Major Axis	N(±)/S(±)	E(±)/W(±)	TVD	YSec	N(±)/S(±)	E(±)/W(±)
SMU 8-15-D TD	Circle	100.00	1381713.62	3084037.28	8000.00	3063.81	2584.00	1646.17
SMU 8-15-D T1	Circle	100.00	1380676.67	3083381.01	3055.00	1836.57	1549.00	986.70
SMU 8-15-D T2	Circle	100.00	1381174.83	3083696.27	5001.00	2426.13	2046.22	1303.50
SMU 8-15-D T3	Circle	100.00	1381403.18	3083840.80	6272.00	2696.39	2274.14	1448.73

Critical Points								
Critical Point	MD	INCL	AZIM	TVD	YSEC	N(±) / S(±)	E(±) / W(±)	DLS
Surface	0.00	0.00	32.50	0.00	0.00	0.00	0.00	
KOP, Build 2.8/100'	500.00	0.00	32.50	500.00	0.00	0.00	0.00	0.00
13 3/8" Casing Point	1108.95	17.05	32.50	1100.00	89.94	75.86	48.32	2.80
Hold 53° INC.	2392.96	53.00	32.50	2134.29	814.88	687.29	437.79	2.80
Drop, 2.5°/100'	3029.63	53.00	32.50	2517.42	1323.36	1116.16	710.97	0.00
T1, Drop 2.5°/100'	3776.14	34.34	32.50	3055.00	1836.57	1549.00	986.70	2.50
Hold 12° INC.	4669.58	12.00	32.50	3871.18	2185.91	1843.63	1174.41	2.50
9 5/8" Casing Point	5726.52	12.00	32.50	4905.00	2405.73	2029.01	1292.54	0.00
T2	5824.66	12.00	32.50	5001.00	2426.14	2046.22	1303.50	0.00
T3	7124.08	12.00	32.50	6272.00	2696.39	2274.14	1448.73	0.00
SMU 8-15-D TD	8890.71	12.00	32.50	8000.00	3063.81	2584.00	1646.17	0.00