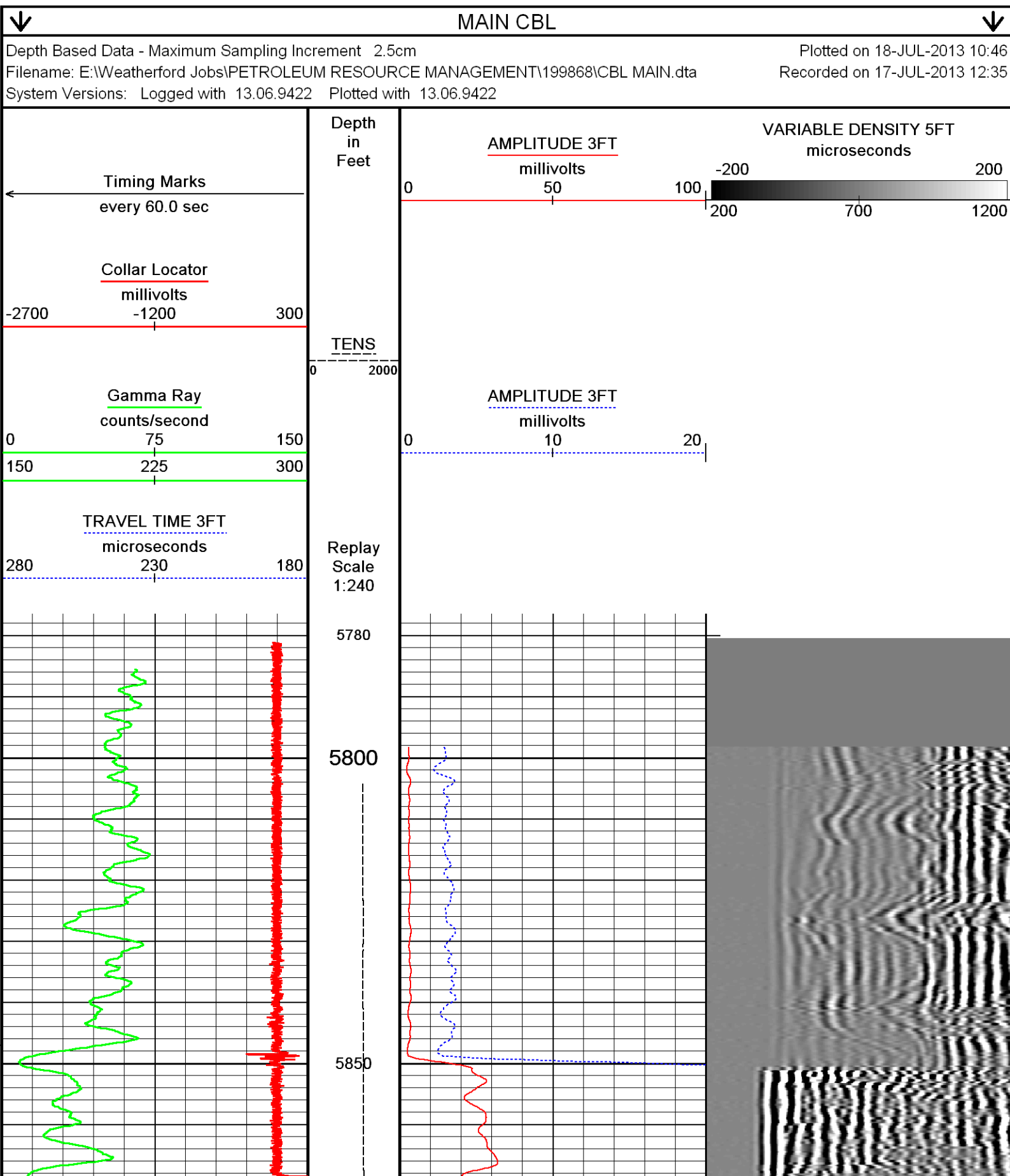
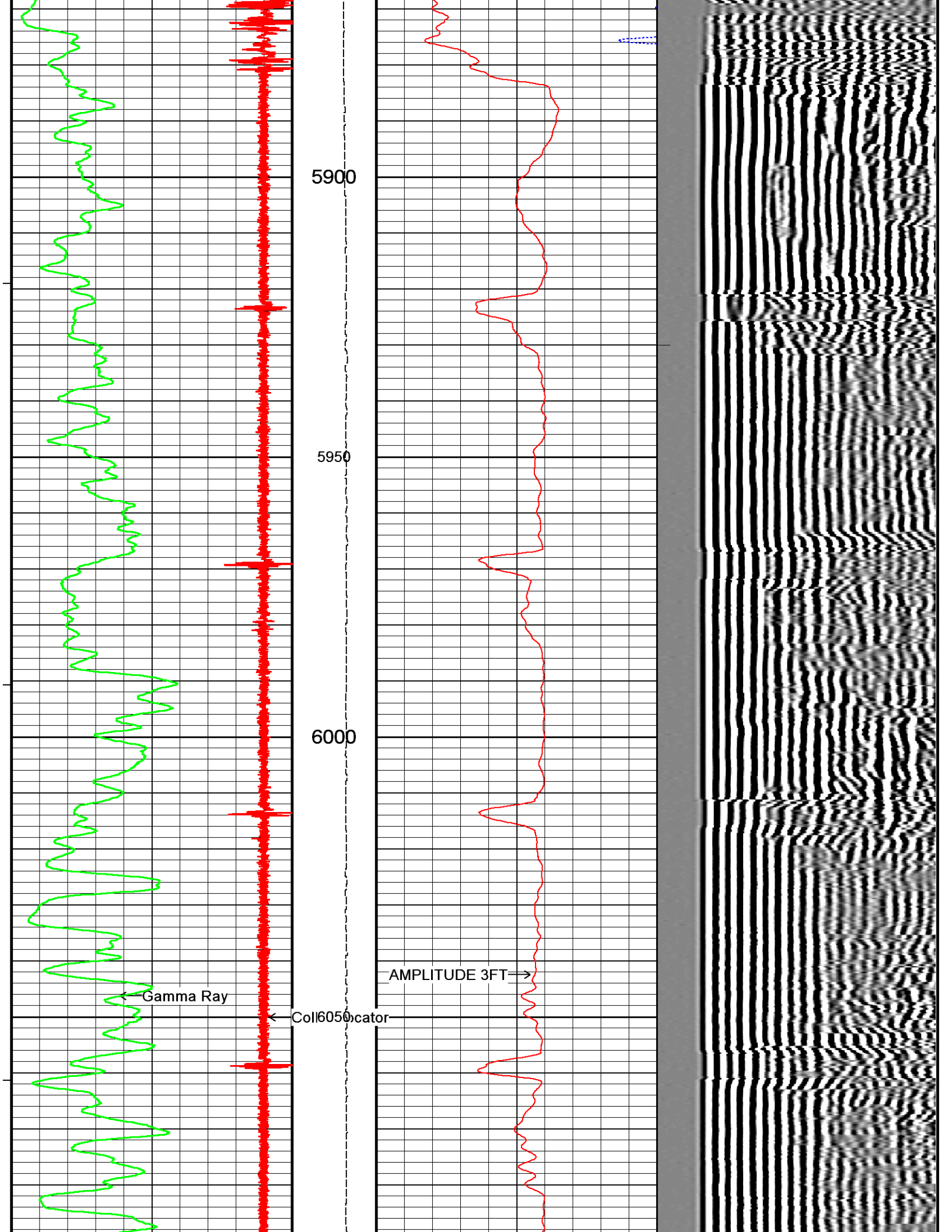
				CEMENT BOND LOG			
Weatherford®				GAMMA RAY / CCL LOG			
COMPANY				PETROLEUM RESOURCE MANAGEMENT CORP.			
WELL				SHEE HAN 2 # 4-2			
FIELD				WILDCAT			
PROVINCE/COUNTY				MOFFAT			
COUNTRY/STATE				COLORADO			
LOCATION				2082' FNL & 350' FEL			
SEC 2	TWP 10N	RGE 89W	Other Services				
Latitude		Longitude		N/A			
API Number		05-081-07750-00					
Permanent Datum G.L., Elevation 8266 feet							
Log Measured From KB							
Drilling Measured From KB							
Date		17-JUL-2013		PERFORATION RECORD			
Run Number	ONE	Shot	Number	Depth From	Depth To		
Service Order	199868	Density	of Shots	feet	feet		
Type Log	CBL						
Depth Driller	9100.00						
Depth Logger	8764.00						
Top Log Interval	5800.00						
Bottom Log Interval	8750.00						
Hole Fluid Type	WATER						
Hole Fluid Level							
Restriction ID		Gun Type					
Max Recorded Temp		Gun Size					
Well Head Pressure	0.00	psia	CASING / TUBING RECORD				
Well Head Equipment	7/16 5K	Size	Weight	Depth From	Depth To		
Time Well Ready	R.O.A.	inches	pounds/ft	feet	feet		
Time Logger Bottom	12:00	9.625	0.00	0.00	991.00		
Unit	14097	7.000	29.00	0.00	5850.00		
Equipment Name	WEATHERFORD	4.500	11.60	0.00	8764.00		
Base	CASPER						
Recorded By	DAVID C. ALVEY						
Witnessed By	AL HARTSE						

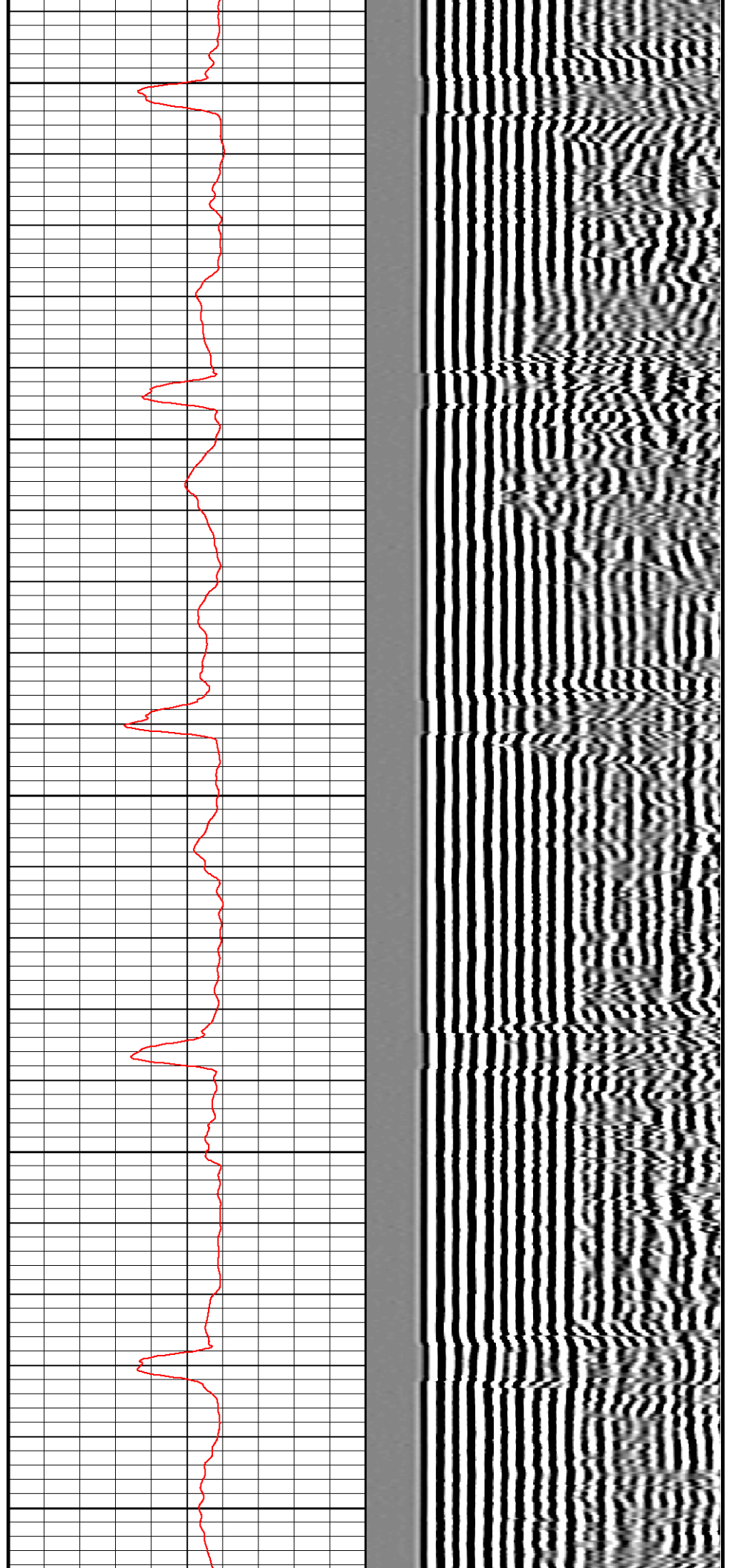
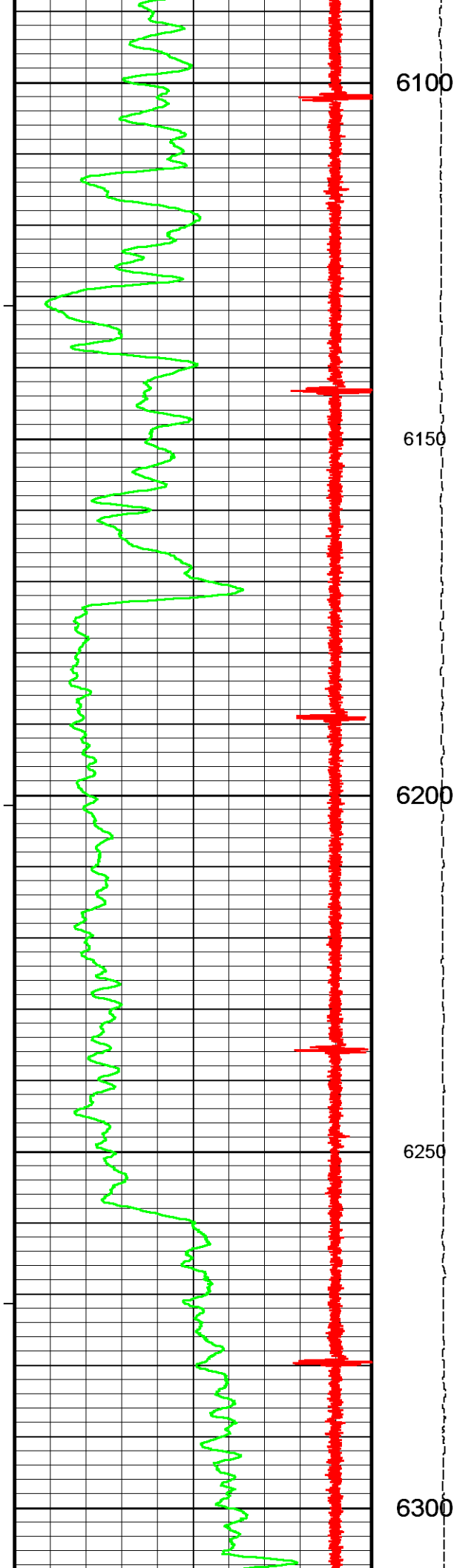
BOREHOLE RECORD			Last Edited: 17-JUL-2013 13:51
Bit Size inches	Depth From feet	Depth To feet	
9.625	0.00	9100.00	
CASING / TUBING RECORD			
Type	Grade	TypeJoint	Size inches
			Depth From feet
			Shoe Depth feet
			Weight pounds/ft
SURFACE	P-110		9.625
PRODUCTION	P-110		0.00
LINER	P-110		4.500

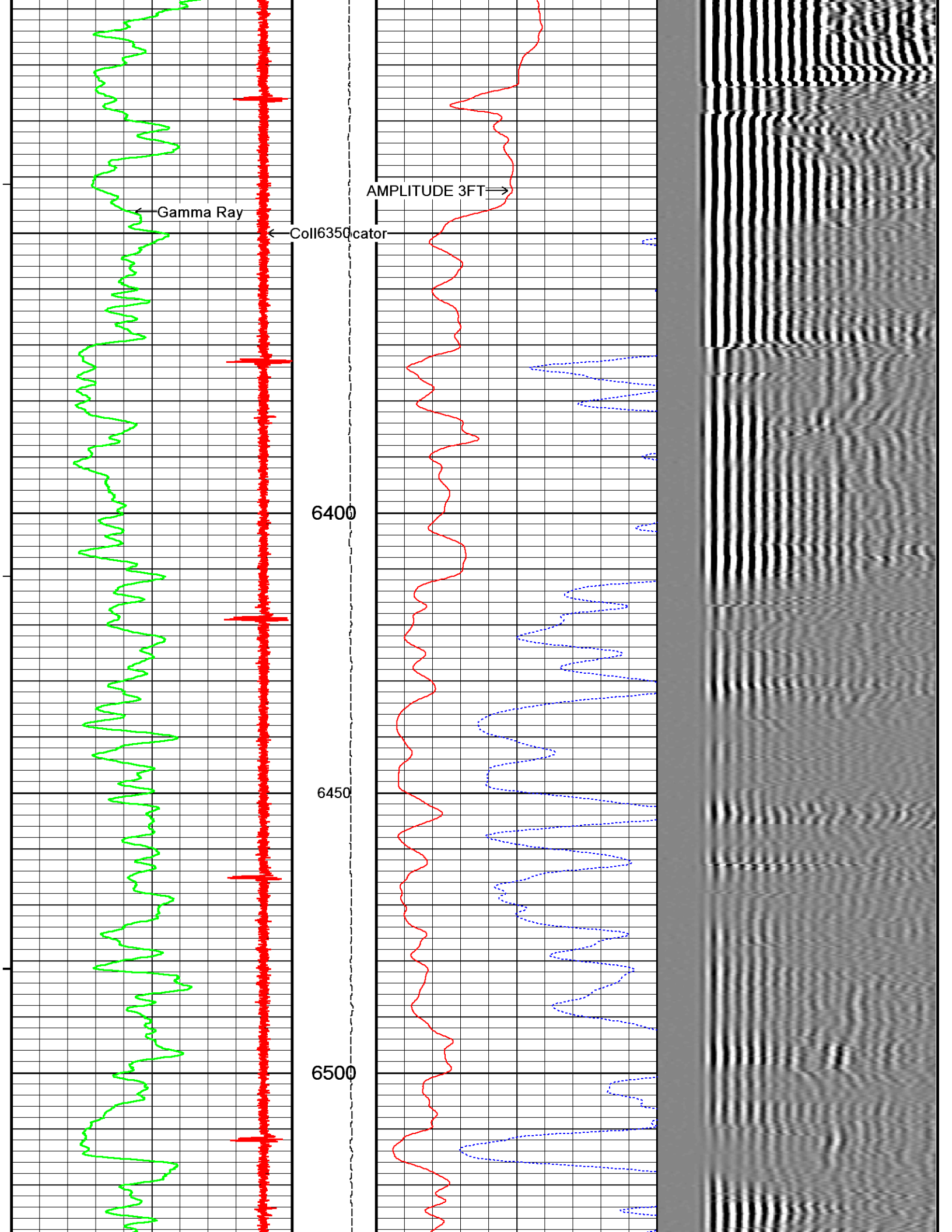
REMARKS
LOG CORRELATED TO THE GAMMA RAY OFF OF SCHLUMBERGER LOG RAN ON 03-JULY-2013 ALL SERVICES PER CLIENT REQUEST FLUID LEVEL @ 388' EST. TOP OF CEMENT AT SEE LOG TOOL NUMBERS RAN IN HOLE CENA 229 CTBA 287 GRBA 281 CENB 240 SBTA 272 CENA 222 THANK YOU FOR CHOOSING WEATHERFORD WIRELINE

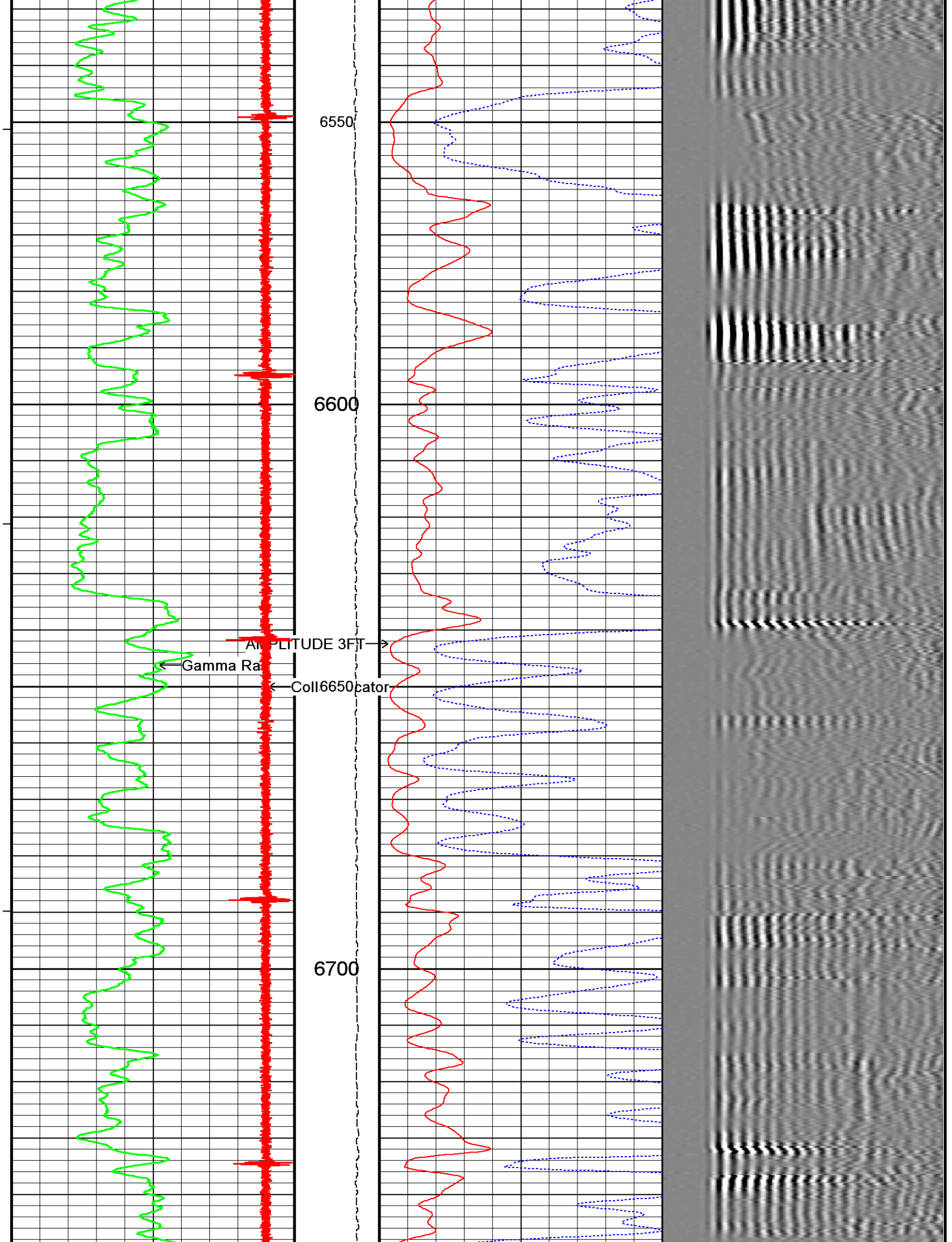
All interpretations are opinions based on inferences from electrical or other measurements and we cannot, and do not, guarantee the accuracy or correctness of any interpretations, and we shall not, except in the case of gross or wilful negligence on our part, be liable or responsible for any loss, costs, damages or expenses incurred or sustained by anyone resulting from any interpretation made by any of our officers, agents or employees. These interpretations are also subject to our general terms and conditions in our price schedule.

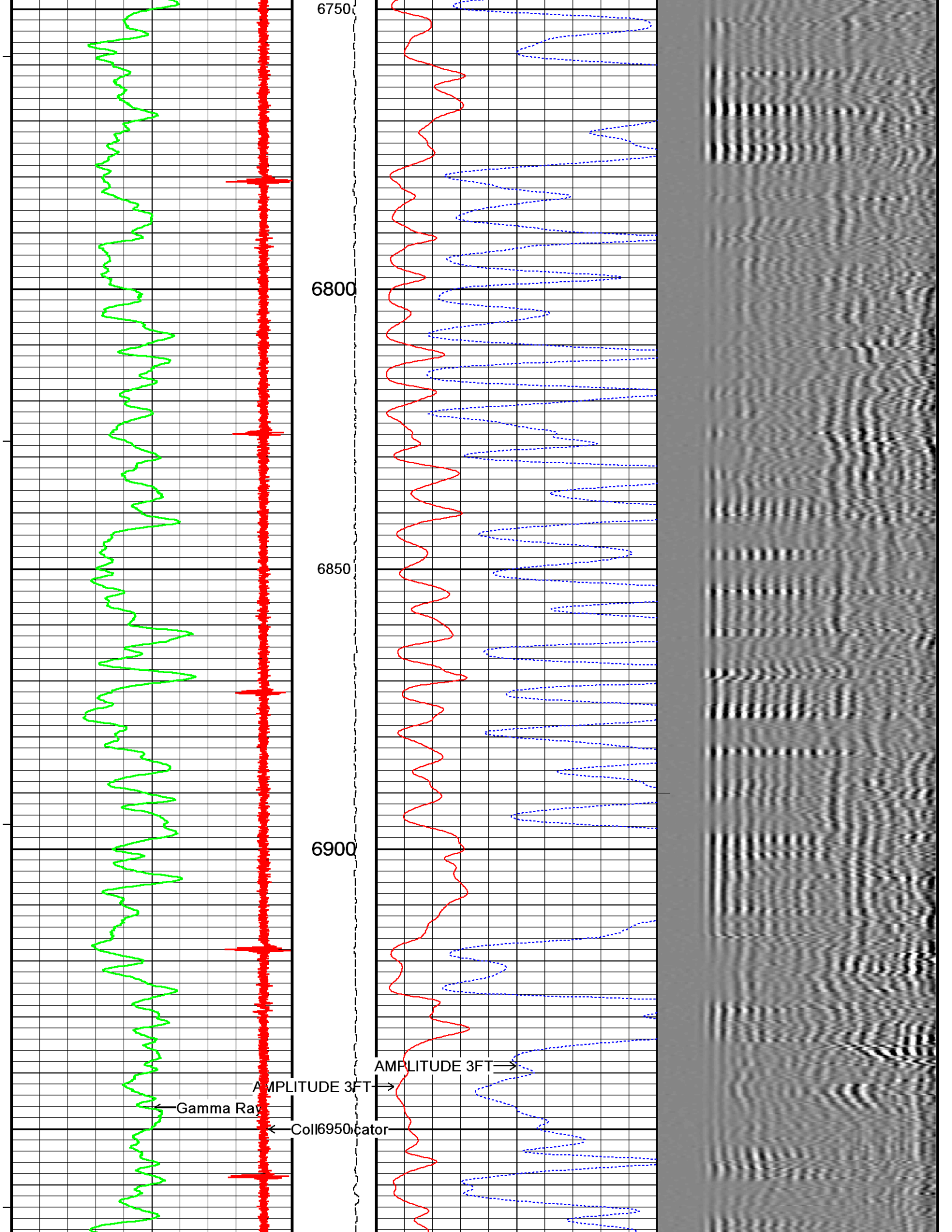


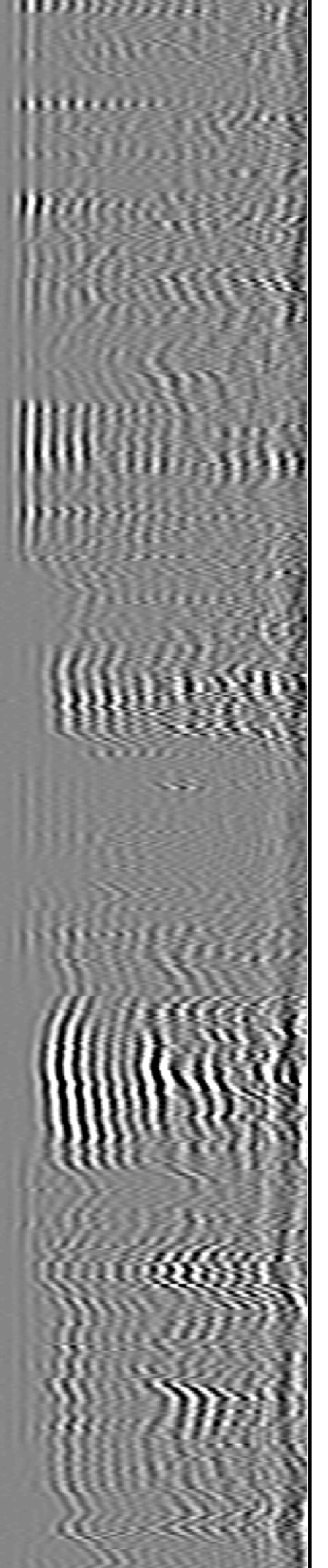
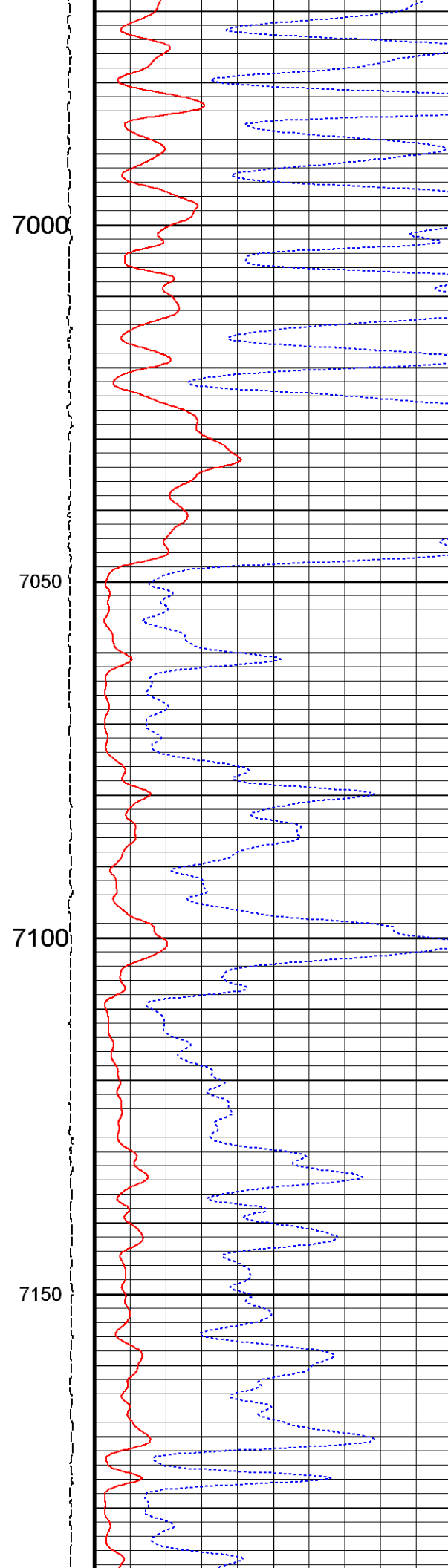
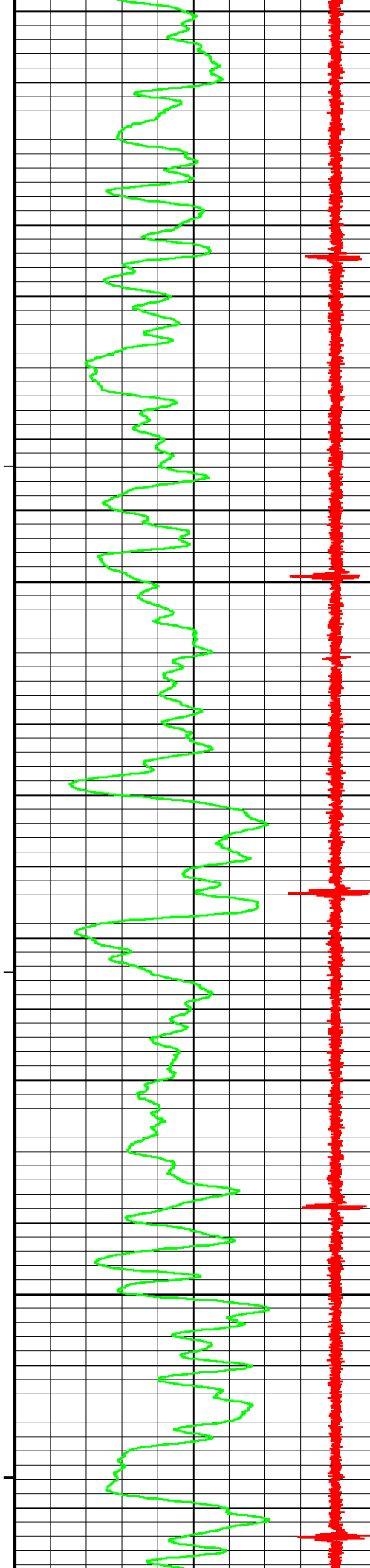


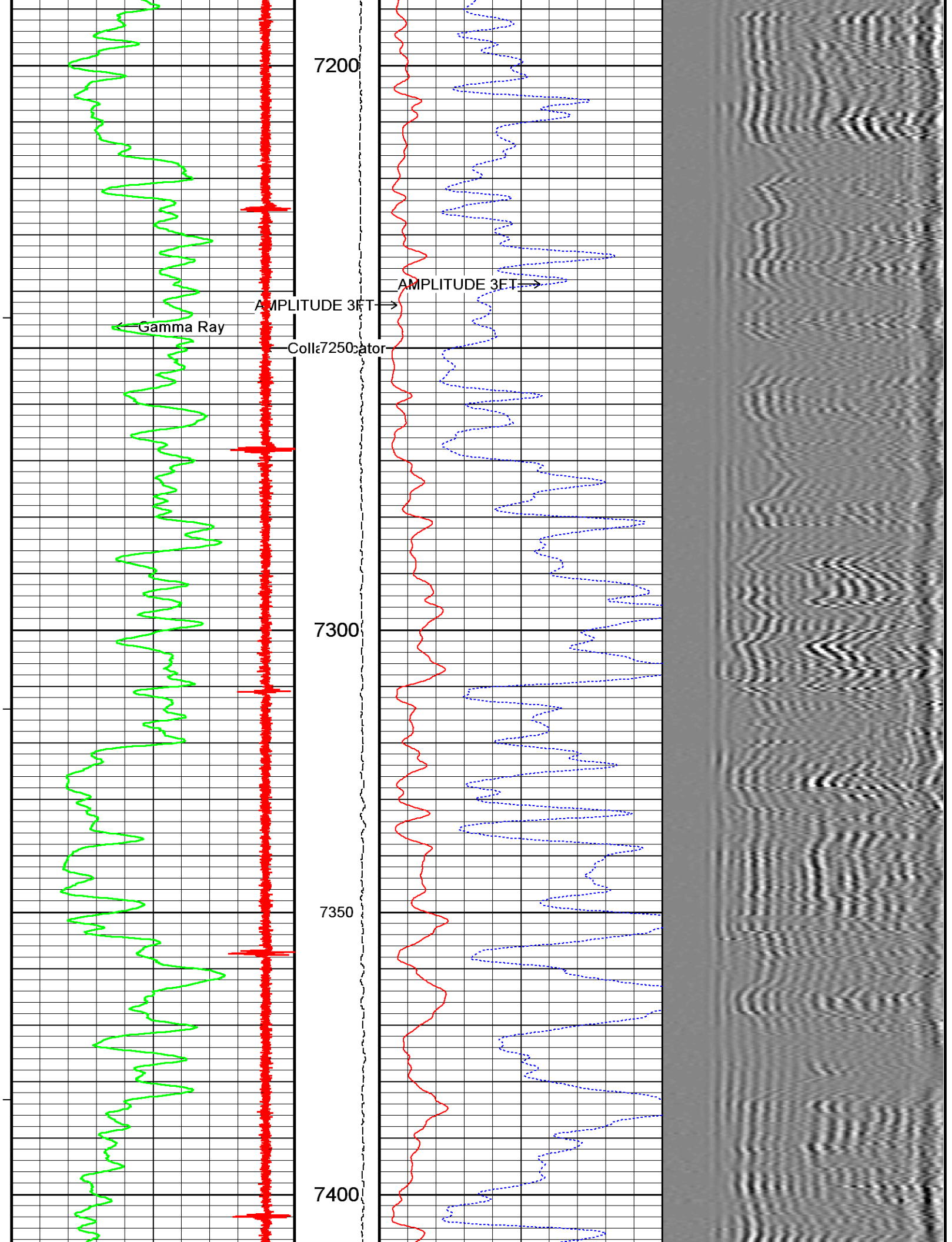


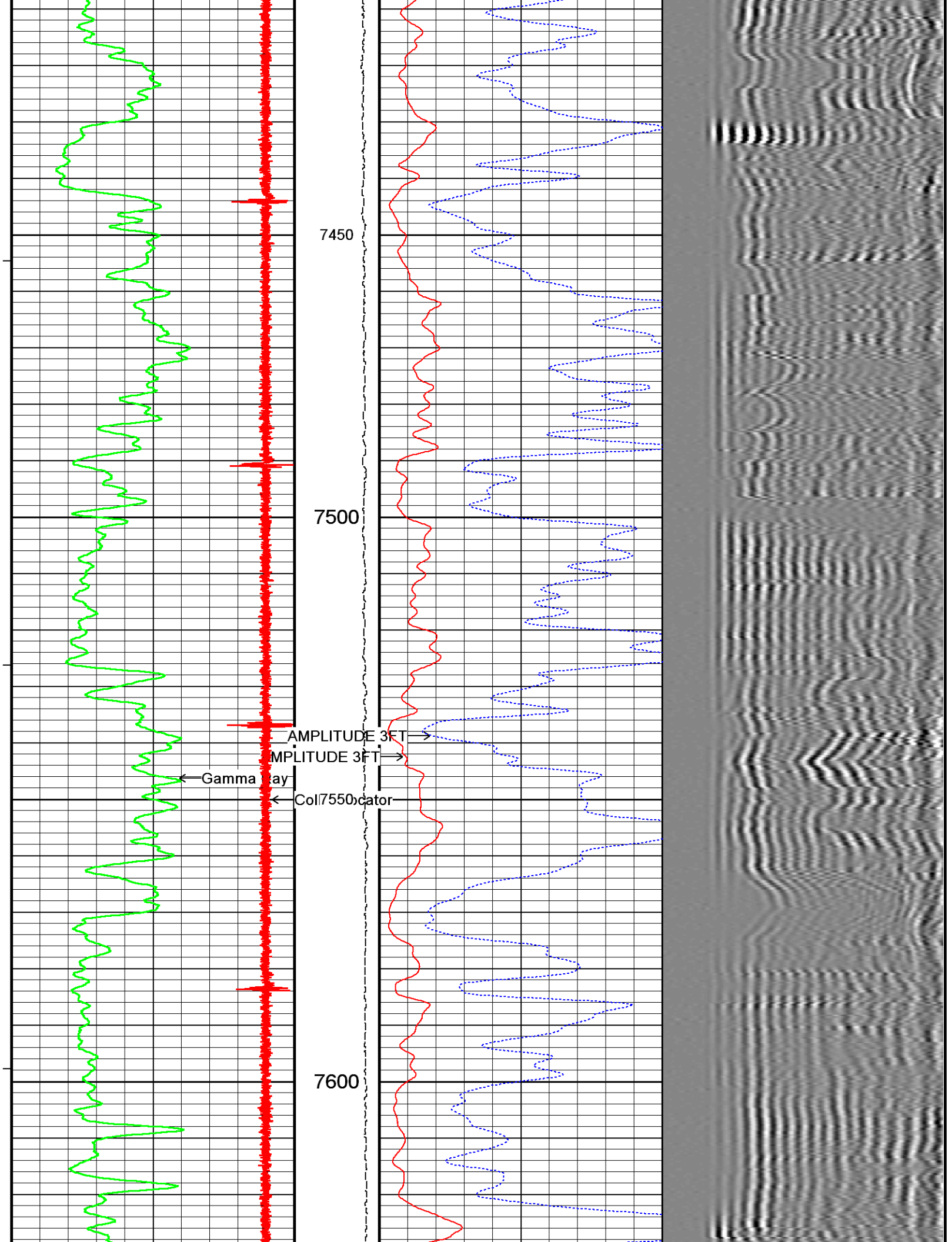


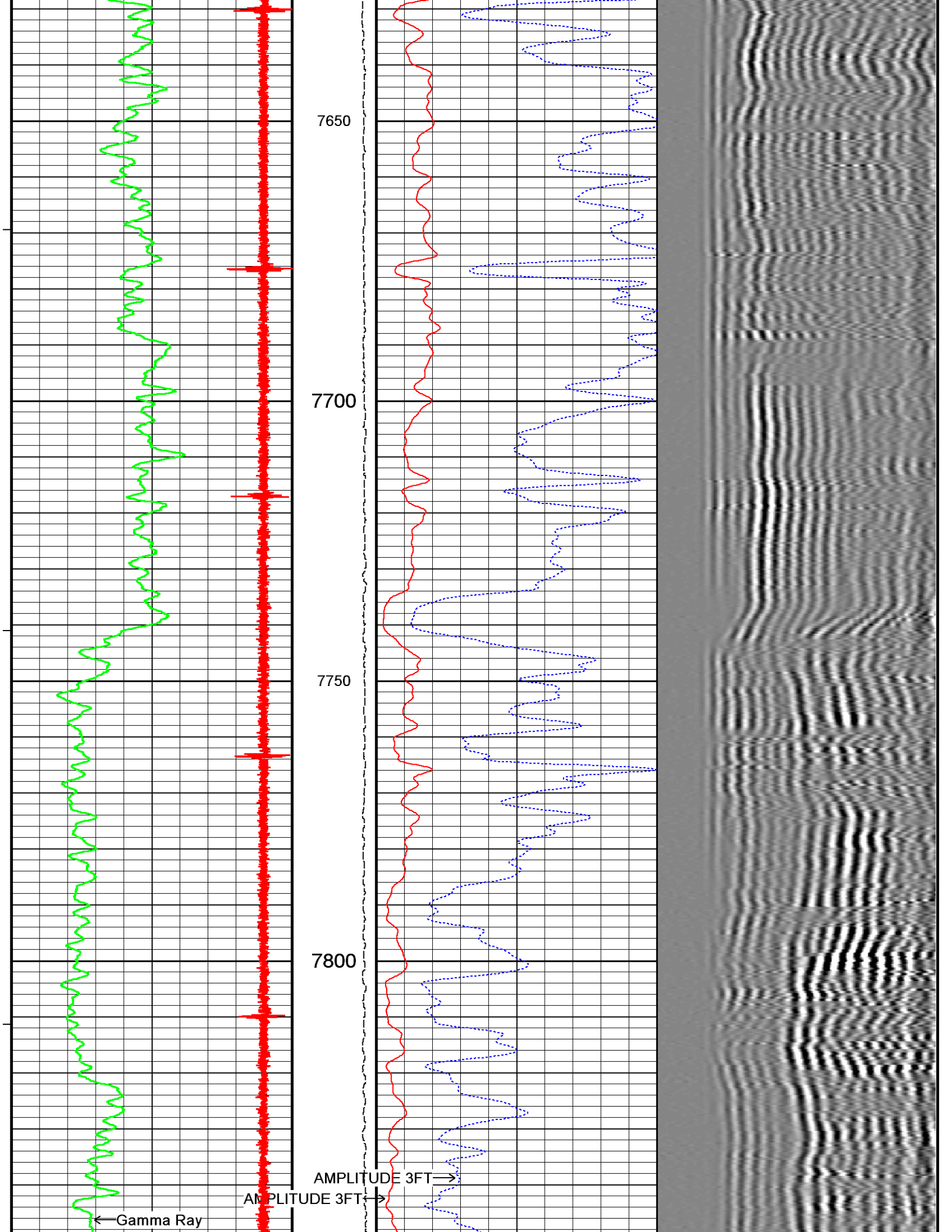


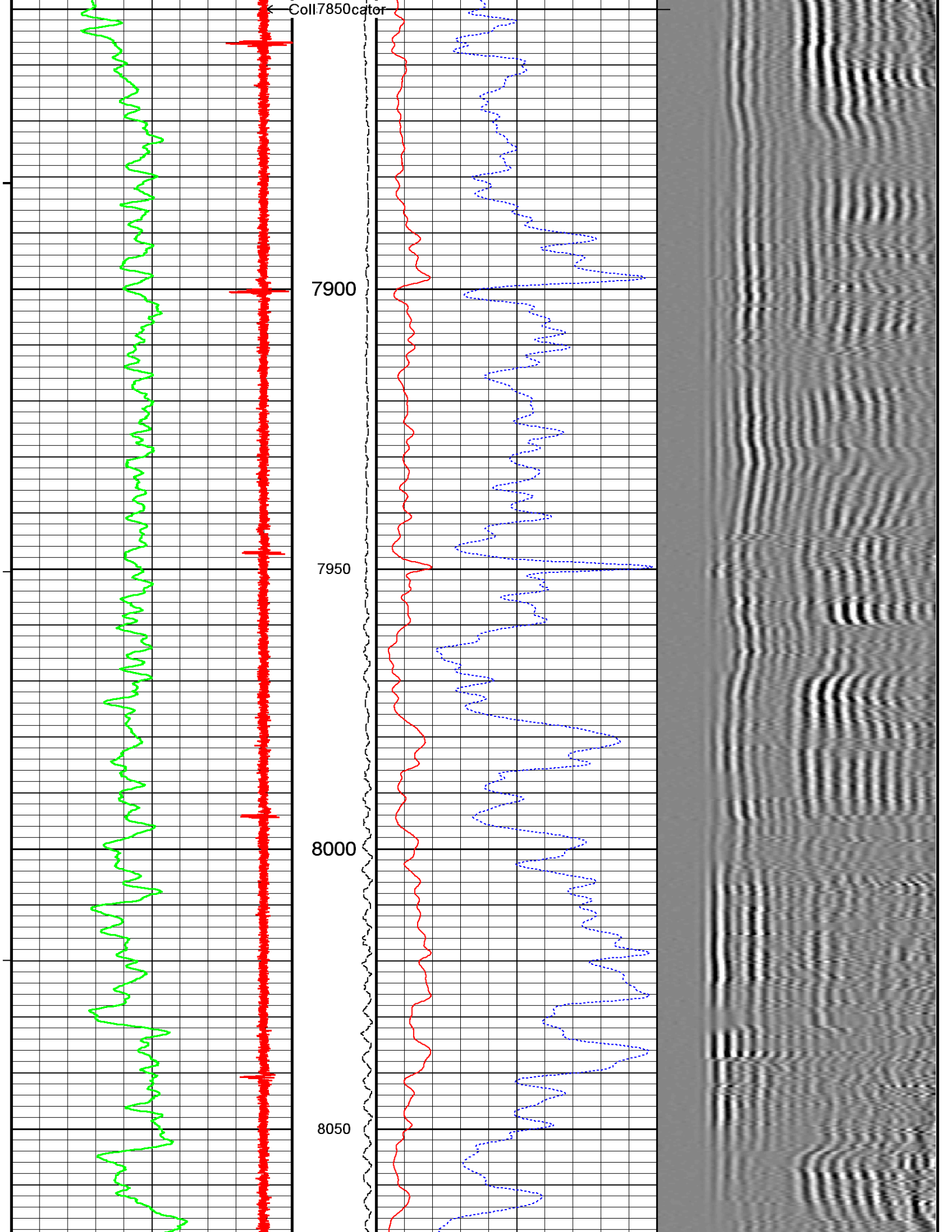


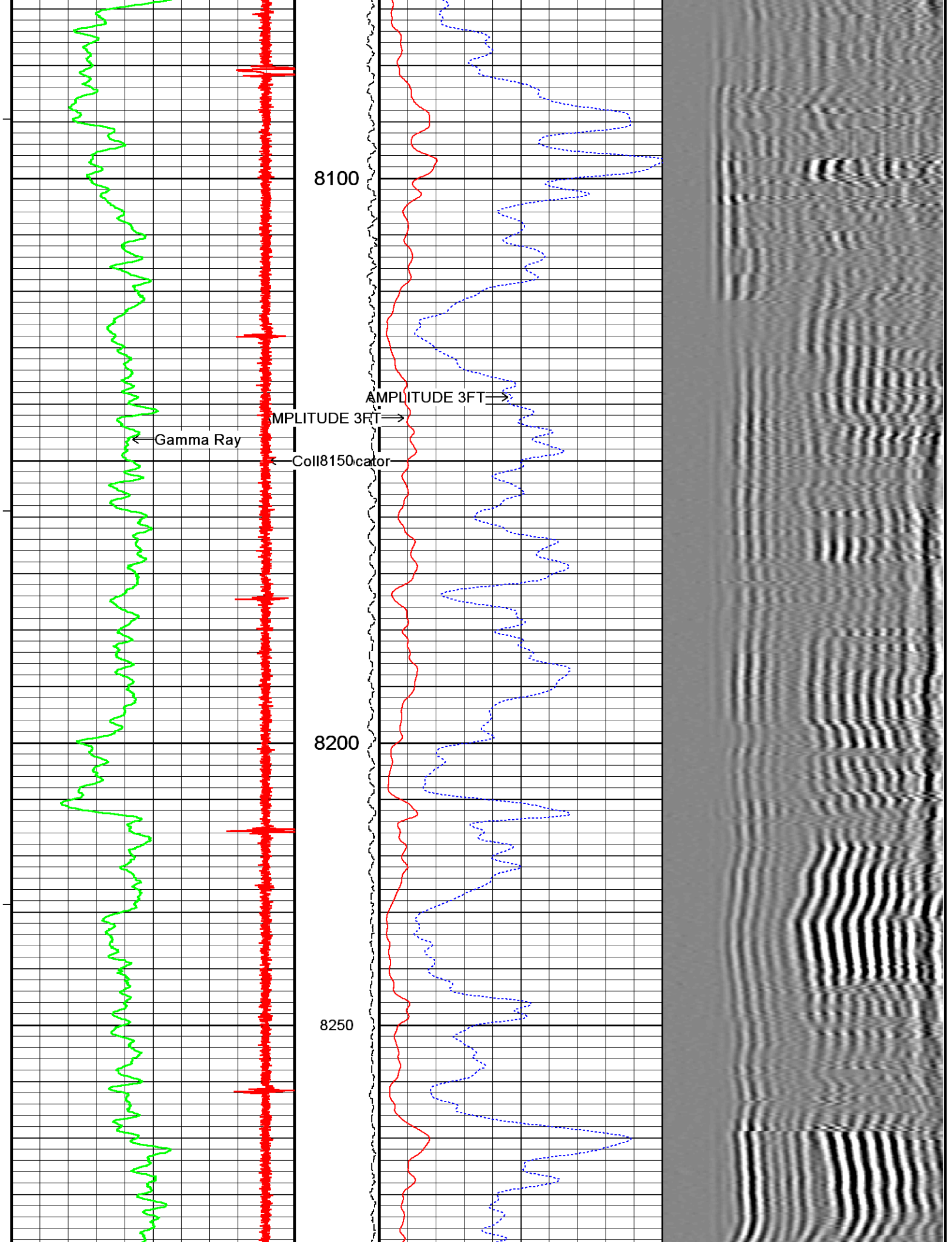


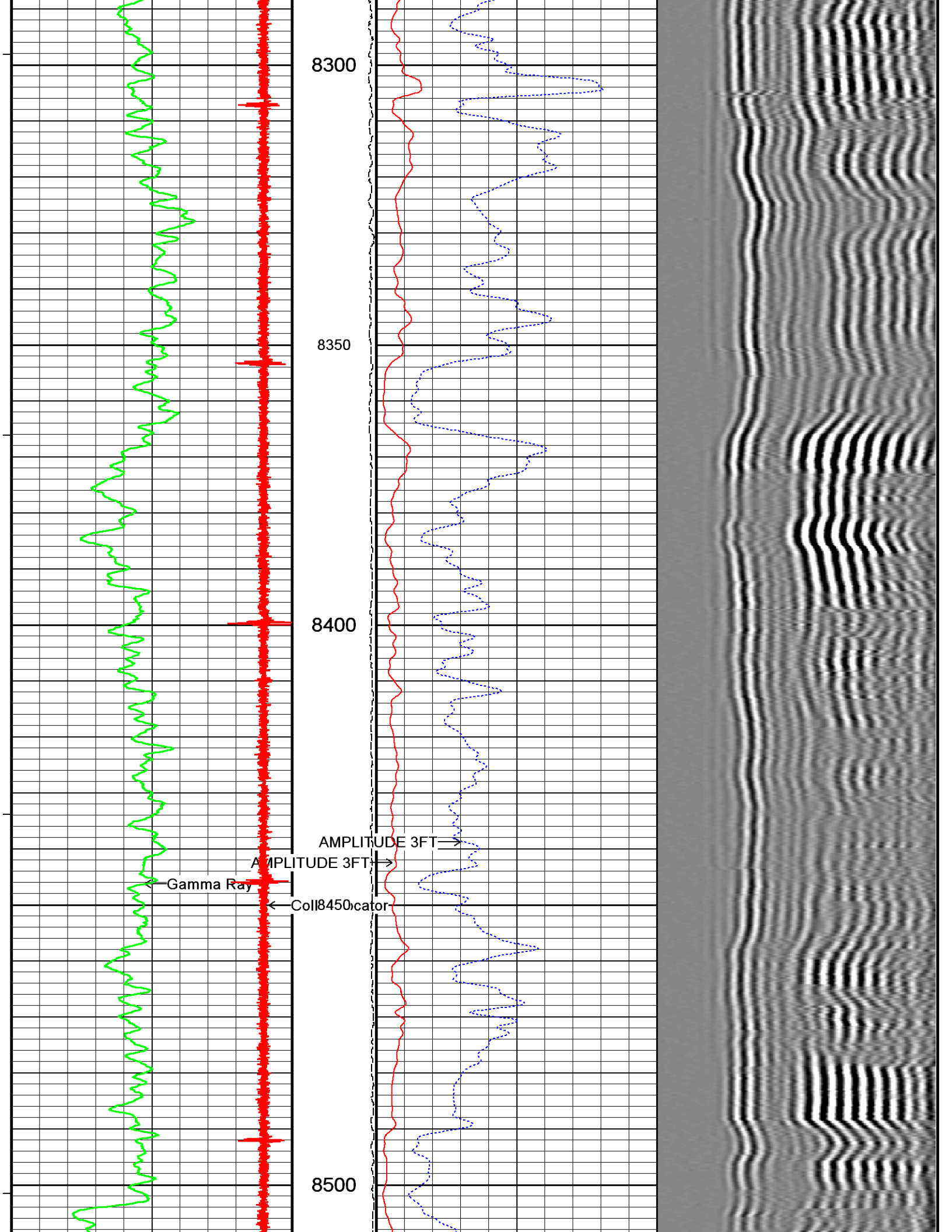


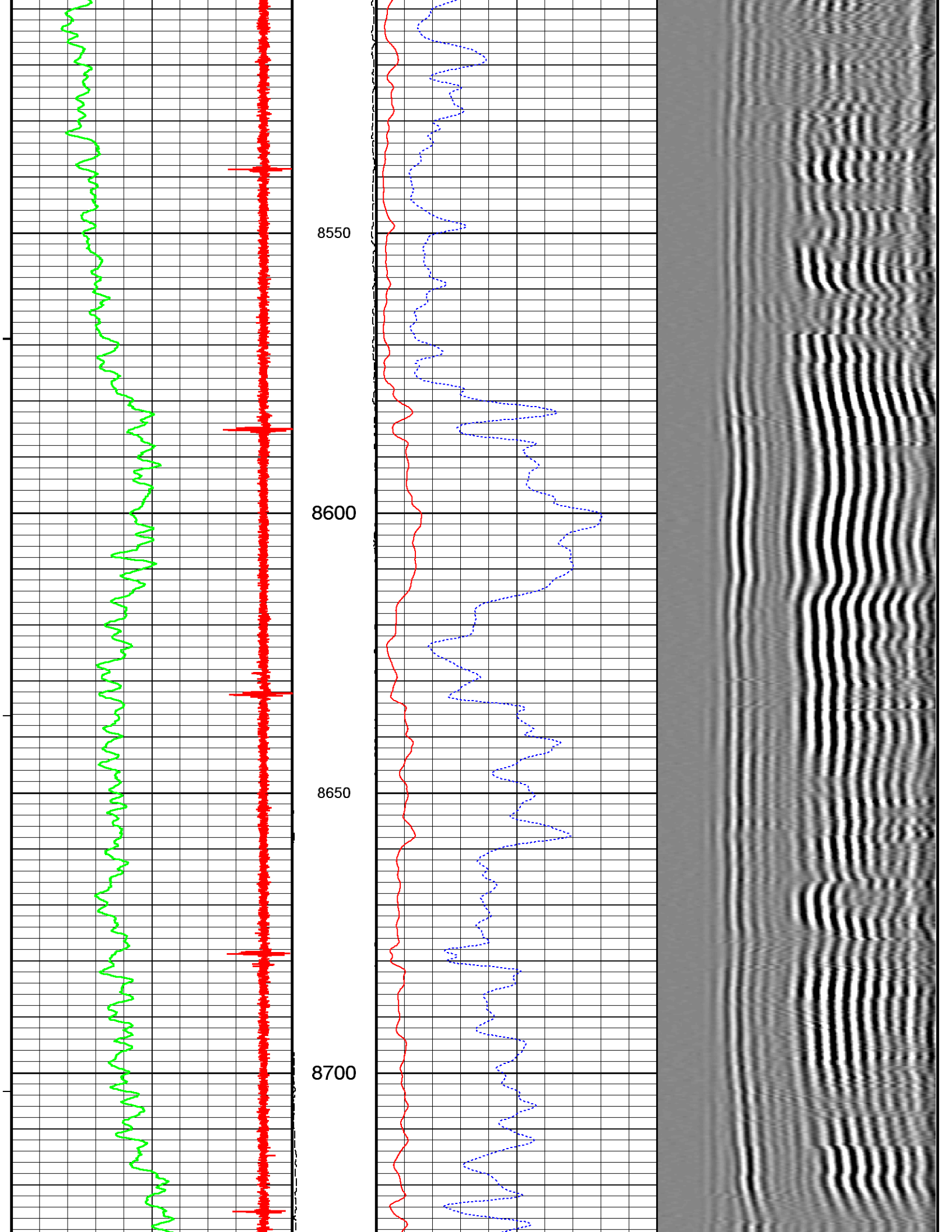


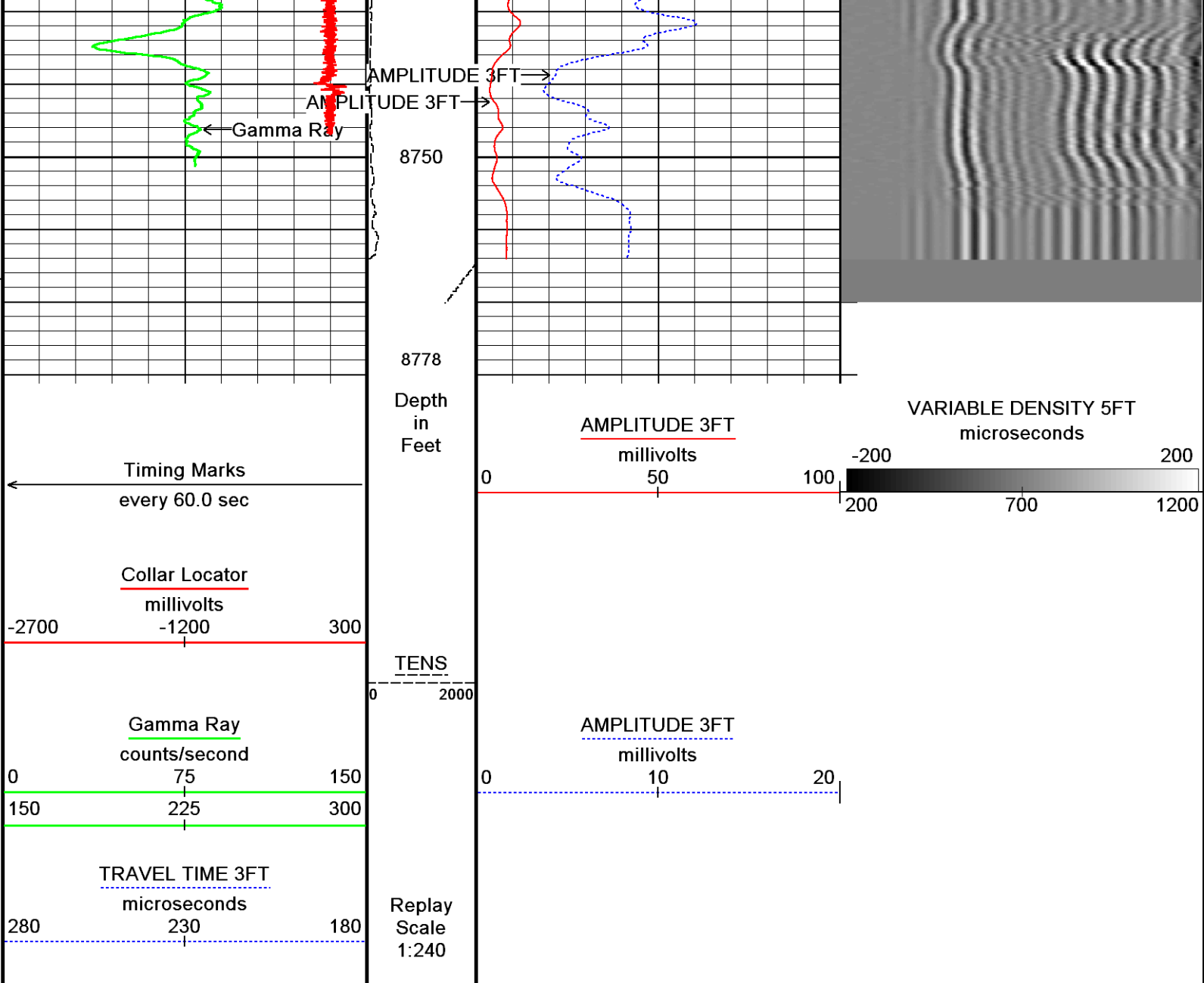












Depth Based Data - Maximum Sampling Increment 2.5cm
Filename: E:\Weatherford Jobs\PETROLEUM RESOURCE MANAGEMENT\199868\CBL MAIN.dta
System Versions: Logged with 13.06.9422 Plotted with 13.06.9422

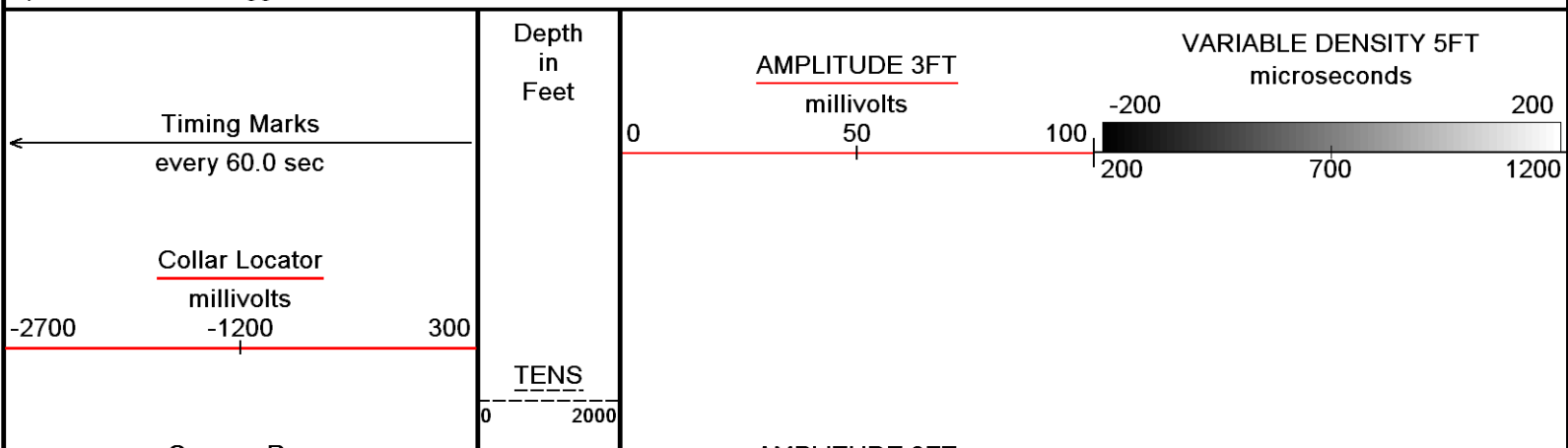
Plotted on 18-JUL-2013 10:46
Recorded on 17-JUL-2013 12:35

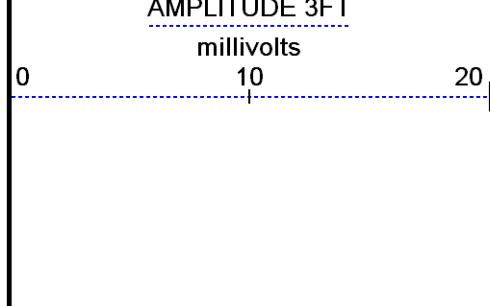
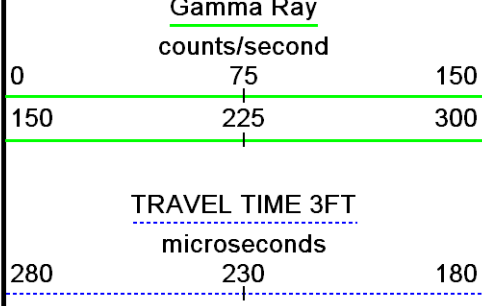
↑ MAIN CBL ↑

↓ REPEAT CBL ↓

Depth Based Data - Maximum Sampling Increment 2.5cm
Filename: E:\Weatherford Jobs\PETROLEUM RESOURCE MANAGEMENT\199868\CBL REPEAT.dta
System Versions: Logged with 13.06.9422 Plotted with 13.06.9422

Plotted on 18-JUL-2013 10:46
Recorded on 17-JUL-2013 12:35





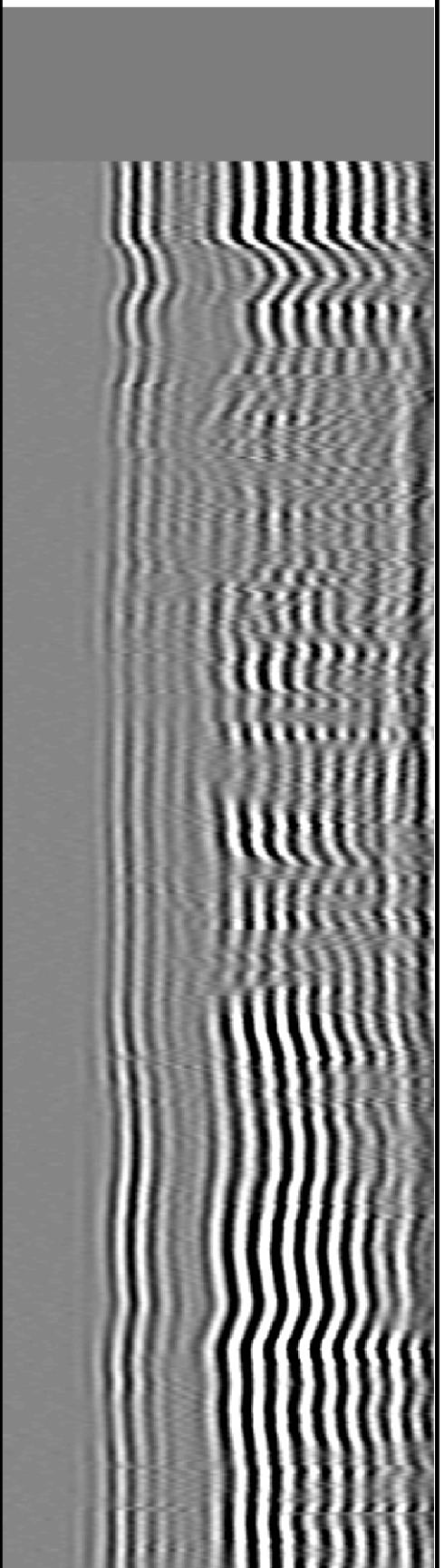
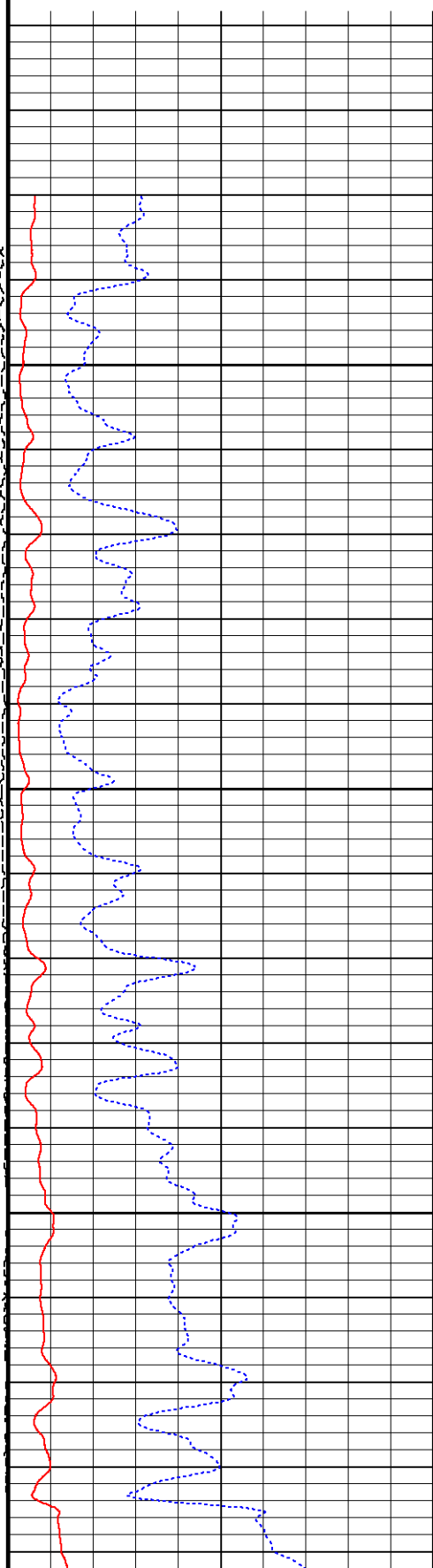
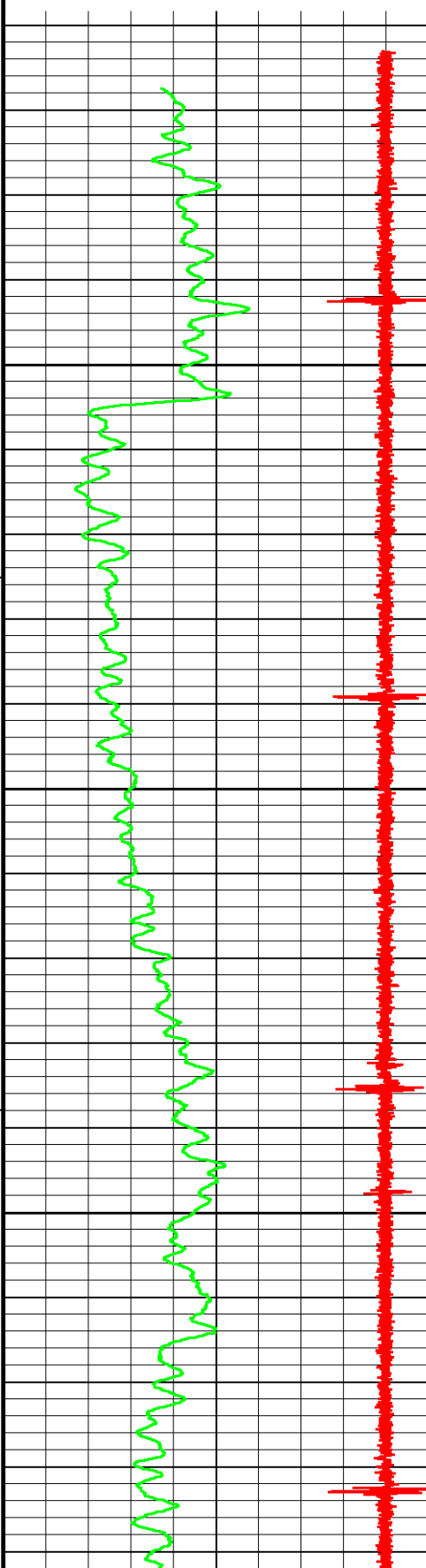
Replay
Scale
1:240

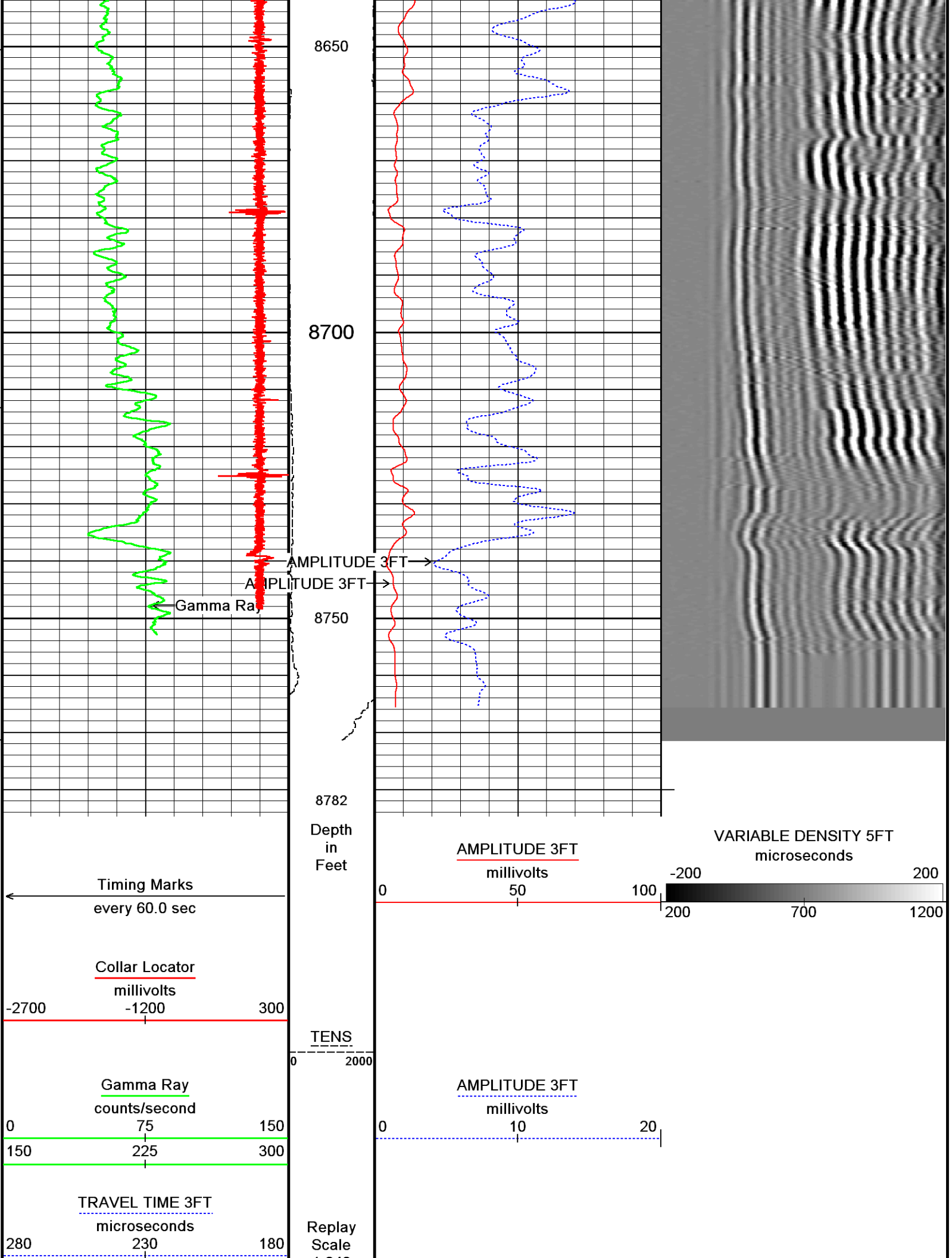
8460

8500

8550

8600







REPEAT CBL



DOWNHOLE EQUIPMENT

E:\Weatherford Jobs\PETROLEUM RESOURCE MANAGEMENT\199868\CBL MAIN.dta

Mono-Cablehead

MCH-AA 0 LG: 1.02 ft WT: 2.2 lb OD: 1.42 in

2.75in Bond Cent

CEN-AA 287 LG: 2.49 ft WT: 11.0 lb OD: 2.72 in

2.75" CCL/Telemetry Sub

CTB-AB 287 LG: 3.40 ft WT: 39.7 lb OD: 2.76 in

2.75" Gamma Ray Tool

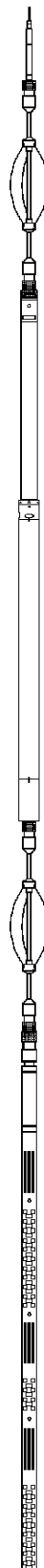
GRB-AB 281 LG: 4.71 ft WT: 59.5 lb OD: 2.76 in

2.75in SBT Middle

CEN-BA 241 LG: 3.08 ft WT: 22.0 lb OD: 2.72 in

Sector Bond Tool

SBT-AA 272 LG: 10.32 ft WT: 90.4 lb OD: 2.72 in



23.23 ft

CCL - Collar Locator

19.64 ft

GR - Gamma Ray

6.95 ft

TT3F - TRAVEL TIME 3FT

6.95 ft

AM3F - AMPLITUDE 3FT

5.95 ft

VDL2 - VARIABLE DENSITY 5FT

2.75in Bond Cent
CEN-AA 222 LG: 2.49 ft WT: 11.0 lb OD: 2.72 in

Total Length: 27.51 ft Weight: 235.9 lb



0.00 ft TENS - Tension
Tool Zero (0.00ft from bottom)
All measurements relative to tool zero.

COMPANY	PETROLEUM RESOURCE MANAGEMENT CORP.
WELL	SHEE HAN 2 # 4-2
FIELD	WILDCAT
PROVINCE/COUNTY	MOFFAT
COUNTRY/STATE	COLORADO

Elevation Kelly Bushing	8280.00	feet	Bottom Log Interval	8750.00	feet
Elevation Drill Floor	8279.00	feet	Depth Driller	9100.00	feet
Elevation Ground Level	8266.00	feet	Depth Logger	8764.00	feet



Weatherford®

CEMENT BOND LOG
GAMMA RAY / CCL LOG