

**ANADARKO PETROLEUM CORP - EBUS
DO NOT MAIL - PO BOX 4995
THE WOODLANDS, Texas**

Caboose 1548-21-44 SWD

PIONEER 54

Post Job Summary **Cement Surface Casing**

Date Prepared: 2/8/2014
Version: 1

Service Supervisor: PICKELL, CHRISTOPHER

Submitted by: TRIER, DEREK

HALLIBURTON

HALLIBURTON

Wellbore Geometry

Job Tubulars					MD		Shoe Joint Length ft
Type	Description	Size in	ID in	Wt lbm/ft	Top ft	Bottom ft	
Casing	13 3/8" Surface Casing	9.63	8.921	36.00	0.00	523.00	41.00
Open Hole Section	17" Open Hole Section		13.500		0.00	535.00	0.00

HALLIBURTON

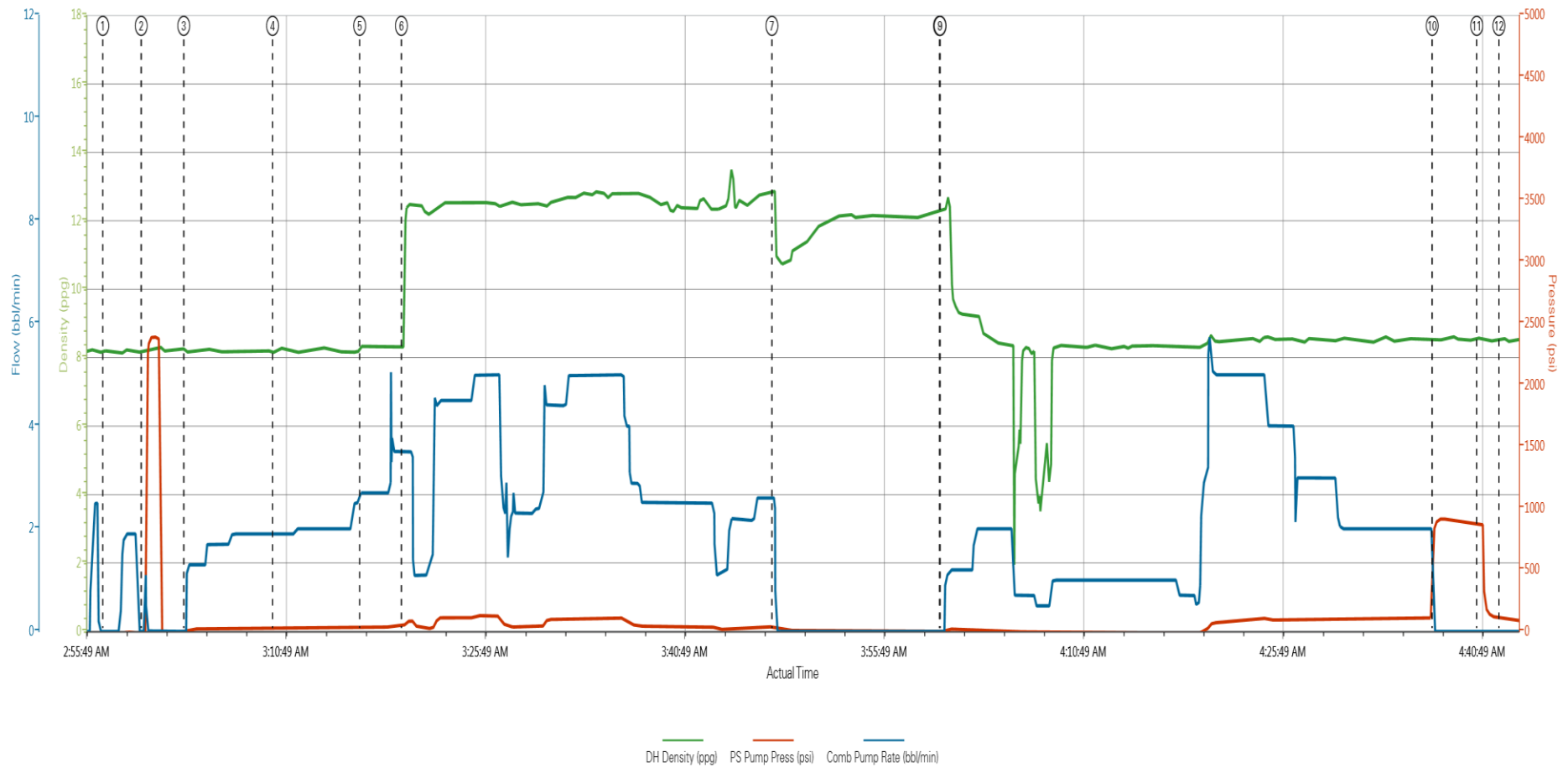
Pumping Schedule

Stage /Plug #	Fluid #	Fluid Type	Fluid Name	Surface Density lbm/gal	Avg Rate bbl/min	Surface Volume	Downhole Volume
1	1	Spacer	Fresh Water Spacer	8.33	2.00	10.0 bbl	10.0 bbl
1	2	Spacer	Mud Flush	8.40	2.50	12.0 bbl	12.0 bbl
1	1	Spacer	Fresh Water Spacer	8.33	2.50	10.0 bbl	10.0 bbl
1	3	Cement Slurry	SwiftCem B2	12.50	5.00	240.0 sacks	240.0 sacks
1	4	Cement Slurry	Top Out Cement	15.80	0.00	240.0 sacks	0.0 sacks

HALLIBURTON

Data Acquisition

CABOOSE 1548-21-44 SWD (13 3/8" SURFACE)



1 Start Job 8:22;36,0	4 Pump Mudflush 8:17;21;1.9	7 Shutdown 12:69;38;2.6	10 Bump Plug 8:52;830;0
2 Test Lines 8:18;26;0	5 Pump Water 8:34;33;2.7	8 Drop Top Plug 12:27;1;0	11 Check Floats 8:58;874;0
3 Pump Water W/Red Dye 8:19;-5;0	6 Pump Swiftcem 12:58;31;50;3.5	9 Pump Displacement 12:27;1;0	12 End Job 8:53;104;0

▲ HALLIBURTON | iCem® Service

Created: 2014-01-31 17:57:53, Version: 3.0.121

Edit

HALLIBURTON

Service Supervisor Reports

Job Log

Date/Time	Chart #	Activity Code	Pump Rate	Cum Vol	Pump		Pressure (psig)		Comments
01/31/2014 09:30		Call Out							CREW CALLED OUT AT 0930. CREW WAS CHRISTOPHER PICKELL, WILLIAM JEWELL, ROY NESBITT, SPENCER TORREY, RYAN MASTEL. REQUESTED OL AT 1100. CREW WAS NOT CALLED UNTIL 0930 BECAUSE THE YARD WAS SHUT DOWN DUE TO WEATHER.
01/31/2014 12:30		Depart from Service Center or Other Site							SAFETY MEETING HELD FOR JOURNEY TO LOCATION. LEFT THE YARD FOR PIONEER 54.
01/31/2014 16:00		Arrive At Loc							ARRIVE ON LOCATION 5 HOURS AFTER REQUESTED ON LOCATION TIME. RIG WAITING ON HALLIBURTON SWAGE TO START RUNNING CASING. CASING ON BOTTOM AT 0130 ON 2/1/14.
01/31/2014 17:30		Rig-Up Equipment							HAZARD HUNT PERFORMED. WATER TEST DONE. RIG UP PLANNED AND EXECUTED.
02/01/2014 02:30		Pre-Job Safety Meeting							SAFETY MEETING HELD WITH RIG CREW TO DISCUSS JOB SAFETY AND PROCEDURE
02/01/2014 02:57		Start Job							SWAGE USED TO PUMP CEMENT JOB THREW. PLUG CONTAINER NOT AVAILABLE.
02/01/2014 03:00		Test Lines	1	2				2500.0	PRESSURE TEST LINES TO 2500 PSI. CHECK FOR VISIBLE LEAKS AND PRESSURE LOSS
02/01/2014 03:03		Pump Spacer 1	2	10				15.0	PUMP WATER WITH RED DYE ADDED PER CUSTOMER REQUEST
02/01/2014 03:09		Pump Spacer 2	2.5	12				20.0	PUMP MUDFLUSH
02/01/2014 03:16		Pump Spacer 1	2.5	10				30.0	PUMP WATER
02/01/2014 03:19		Pump Cement	5	93.2				75.0	PUMP SWIFTCM CEMENT 240 SKS 12.5 PPG 2.18 CUFT/SK 12.41 GAL/SK
02/01/2014 03:47		Shutdown							WASH PUMPS AND LINES ON TOP OF THE PLUG
02/01/2014 04:00		Drop Top Plug							REMOVE SWAGE WHILE SHUTDOWN AND LOAD PLUG DIRECTLY INTO CASING. HALLIBURTON PLUG USED PER CUSTOMER REQUEST.
02/01/2014 04:00		Pump Displacement	5	73.3				95.0	PUMP DISPLACEMENT USING 9.1 PPG MUD. MUD PUMP WAS FROZEN. HAD TO PUMP SLOW FOR FIRST 20 BBL USING WATER FOR RIG TO THAW OUT MUD PUMP
02/01/2014 04:37		Bump Plug	2					112.0	CALCULATED PRESSURE TO LAND WAS 86. PLUG LANDED WITH 112 PSI GOING 500 OVER TO 600 PSI.
02/01/2014 04:40		Check Floats						895.0	PRESSURE WAS HELD FOR 3 MINUTES THEN RELEASED. FLOATS HELD. 1 BBL BACK TO TANKS
02/01/2014 04:42		End Job							16 BBL OF CEMENT TO SURFACE. WAITED 20 MINUTES TO SEE IF CEMENT WOULD FALL BACK AND IT DID NOT.
02/01/2014 04:50		Pre-Rig Down Safety Meeting							SAFETY MEETING HELD TO DISCUSS RIG DOWN SAFETY AND PROCEDURE
02/01/2014 05:00		Rig-Down Equipment							BLOW DOWN PUMP TRUCK. RIG DOWN ALL EQUIPMENT
02/01/2014 06:30		Depart Location for Service Center or Other Site							LEAVE LOCATION FOR THE YARD

The Road to Excellence Starts with Safety

Sold To #: 300466	Ship To #: 3278548	Quote #:	Sales Order #: 901082781
Customer: ANADARKO PETROLEUM CORP - EBUS		Customer Rep: ., DORIN	
Well Name: Caboose		Well #: 1548-21-44 SWD	API/UWI #: 05-017-07780
Field: WATTENBERG	City (SAP): KIT CARSON	County/Parish: Cheyenne	State: Colorado
Lat: N 38.723 deg. OR N 38 deg. 43 min. 22.8 secs.		Long: W 102.78 deg. OR W -103 deg. 13 min. 12 secs.	
Contractor: PIONEER		Rig/Platform Name/Num: PIONEER 54	
Job Purpose: Cement Surface Casing			
Well Type: Development Well		Job Type: Cement Surface Casing	
Sales Person: GREGORY, JON	Srvc Supervisor: PICKELL, CHRISTOPHER		MBU ID Emp #: 396838

Job Personnel

HES Emp Name	Exp Hrs	Emp #	HES Emp Name	Exp Hrs	Emp #	HES Emp Name	Exp Hrs	Emp #
JEWELL, WILLIAM Uris	0.0	503358	MASTEL, RYAN	0.0	561732	NESBITT, ROY Iverson	0.0	537416
PICKELL, CHRISTOPHER Lee	0.0	396838	TORREY, SPENCER Kenneth	0.0	549837			

Equipment

HES Unit #	Distance-1 way	HES Unit #	Distance-1 way	HES Unit #	Distance-1 way	HES Unit #	Distance-1 way
10248053C	164 mile	10679720C	164 mile	11362287C	164 mile	11562544C	164 mile
11605597	164 mile						

Job

Job Times

Formation Name				Date	Time	Time Zone
Formation Depth (MD)	Top	Bottom		Called Out	31 - Jan - 2014	04:00 MST
Form Type	BHST			On Location	31 - Jan - 2014	16:00 MST
Job depth MD	535. ft	Job Depth TVD	535. ft	Job Started	01 - Feb - 2014	02:57 MST
Water Depth		Wk Ht Above Floor	5. ft	Job Completed	01 - Feb - 2014	04:42 MST
Perforation Depth (MD)	From	To		Departed Loc	01 - Feb - 2014	07:00 MST

Well Data

Description	New / Used	Max pressure psig	Size in	ID in	Weight lbm/ft	Thread	Grade	Top MD ft	Bottom MD ft	Top TVD ft	Bottom TVD ft
17" Open Hole Section				13.5				.	535.		
13 3/8" Surface Casing	Unknown		9.625	8.921	36.		J-55	.	523.		

Sales/Rental/3rd Party (HES)

Description	Qty	Qty uom	Depth	Supplier
CMT CASING EQUIPMENT BOM	1	JOB		
MILEAGE FOR CEMENTING CREW,ZI	15	MI		
Description	Qty	Qty uom	Depth	Supplier
ZI FUEL SURCHG-CARS/PICKUPS<1 1/2TON	15	MI		
KIT,HALL WELD-A	1	EA		
CNTRLZR, 9 5/8"x13 3/4',#500-0963-1375	8	EA		
BASKET - CEMENT - 9-5/8 CSG X 12-1/4	1	EA		
PLUG,CMTG,TOP,9 5/8,HWE,8.16 MIN/9.06 MA	1	EA		

Summit

Saturday, February 08, 2014 11:51:00

Version:

COLLAR-STOP-9 5/8"-FRICTION-HINGED						2	EA		
Fluid Data									
Stage/Plug #: 1									
Fluid #	Stage Type	Fluid Name	Qty	Qty uom	Mixing Density lbm/gal	Yield ft ³ /sk	Mix Fluid Gal/sk	Rate bbl/min	Total Mix Fluid Gal/sk
1	Fresh Water Spacer		10.00	bbl	8.33			2.0	
2	Mud Flush		12.00	bbl	8.4			2.5	
3.5 lbm/bbl		MUD FLUSH III, 40 LB SACK (101633304)							
42 gal/bbl		MUD FLUSH III - SBM (528788)							
1	Fresh Water Spacer		10.00	bbl	8.33			2.5	
3	SwiftCem B2	SWIFTCEM (TM) SYSTEM (452990)	240.0	sacks	12.5	2.18	12.41	5.0	12.41
12.41 Gal		FRESH WATER							
4	Top Out Cement	HALCEM (TM) SYSTEM (452986)	240.0	sacks	15.8	1.15	5.0	0.0	5.0
5 Gal		FRESH WATER							
Calculated Values		Pressures		Volumes					
Displacement	73.3	Shut In: Instant		Lost Returns		Cement Slurry		Pad	
Top Of Cement		5 Min		Cement Returns	16.0	Actual Displacement	73.3	Treatment	
Frac Gradient		15 Min		Spacers	32.0	Load and Breakdown		Total Job	
Rates									
Circulating		Mixing		Displacement	5.0	Avg. Job			
Cement Left In Pipe	Amount	41 ft	Reason	Shoe Joint					
Frac Ring # 1 @	ID	Frac ring # 2 @	ID	Frac Ring # 3 @	ID	Frac Ring # 4 @	ID		
The Information Stated Herein Is Correct				Customer Representative Signature					

