



Robert L. Bayless, Producer LLC

**WORKOVER PROCEDURE
GOVERNMENT POHLMAN #1
MANCOS
MOFFAT COUNTY, COLORADO
NWNW Section 15 – 4N – 91W
Surface Location: Latitude 40.32645 N, Longitude 107.60041”
AFE No.
API No. 05-081-05169
March 25, 2014**

CONTACT INFORMATION:

1ST CONTACT(S)	John D. Thomas	Office: (505) 564-7806	Cell: (505) 320-5234
	Tom McCarthy	Office: (505) 326-2659	Cell: (505) 320-4275
	Albert Aranda	Office: (505)-326-2659	Cell: (505) 486-5006

ELEVATION: K.B. – 6,988’ G.L. – 6,985’ (KB = 3’)

<u>CASING:</u>	10-3/4” 40.5# J-55 ST&C	10.050” ID, 9.894” Drift	From Surface – 106’
	Burst: 3,130 psi	Collapse: 1,580 psi	Capacity: 0.0981 bbls/ft
	7” 20# J-55 LT&C	6.456” ID, 6.331” Drift	From Surface – 2,476’
	Burst: 3,740 psi	Collapse: 2,270 psi	Capacity: 0.0393 bbls/ft
	4.5” 11.6# J-55 LT&C	4.000” ID, 3.875” Drift	From Surface – 2,100’
	Burst: 5,350 psi	Collapse: 4,960 psi	Capacity: 0.0155 bbls/ft

<u>Tubing:</u>	2 3/8” 4.6# J-55 LTC	1.995” ID, 1.901” Drift	From Surface – 3,027’
	Burst: 7,700 psi	Collapse: 8,100 psi	Capacity: 0.00387 bbl/ft

<u>Packer:</u>	7” x 2 3/8” 20# compression packer RS11-10	1,955’
-----------------------	---	--------

<u>Rods:</u>	Polish Rod	1 1/4”	16 ft
	Pony Rods	7/8”	2 ft

Rods	3/4"	2975 ft
<u>Pump 2"x1-1/2"x12'</u>		<u>12 ft</u>
Total		3005 ft

PBTD: 3,140'

PRESENT Well is Producing
CONDITION:

DIRECTIONS:

OBJECTIVE: To permanently repair casing leaks in 7" casing and provide isolation from water production

SUMMARY
PROCEDURE:

1. MIRU completion rig.
2. Pull out of hole with rods, pump and tubing.
3. Pick up 7" x 2 3/8" packer.
4. TIH with 2,150' of tubing and set packer
5. Check producing zone for water production.
6. TOOH and Pick up 2,150 of 5.5" Casing external Packer and Cement Stage tool.
7. Set pack and shift tool. Cement Casing. WOC
8. TIH with tubing, pump and rods.

EHS:

- ROBERT L BAYLESS, PRODUCER LLC REQUIRES THAT ALL EMPLOYEES AND CONTRACTORS WHO PERFORM WORK AT A BAYLESS LOCATION PLACE A HIGH PRIORITY ON ENVIRONMENTAL, HEALTH, AND SAFETY PERFORMANCE.
- CONTRACTORS SHALL CONFORM TO ALL SAFETY AND ENVIRONMENT REGULATIONS SET FORTH BY THE BLM, STATE OF COLORADO, EPA, OSHA, ROBERT L BAYLESS, PRODUCER LLC AND ALL OTHERS IN PERFORMANCE OF THE WORK. PERSONNEL VIOLATING KNOWN SAFETY PROCEDURES OR POLICY ARE SUBJECT TO IMMEDIATE REMOVAL FROM BAYLESS PROPERTY.
- NO TASK IS SO IMPORTANT THAT IT BE PERFORMED AT THE RISK OF HEALTH AND SAFETY. EVERY PERSON ON LOCATION HAS THE AUTHORITY, AND OBLIGATION, TO STOP WORK AT ANYTIME IF UNSAFE CONDITIONS ARE OBSERVED.
- ALL PERSONEL ON LOCATION SHALL UTILIZE PROPER PERSONAL PROTECTIVE EQUIPMENT (PPE) REQUIRED BY BAYLESS, CONTRACTORS, OR REGULATORS.
- THE WORK AREA WILL BE MAINTAINED IN A CLEAN AND ORDERLY FASHION. MINOR LEAKS AND SPILLS MUST BE CLEANED UP PROMPTLY AND THE SOURCE OF THE SPILL/LEAK REPAIRED.
- MAJOR LEAKS MUST BE CONTAINED AND REPORTED TO BAYLESS REPRESENTATIVE AND CONTRACTOR SUPERVISOR. REPORTABLE SPILL VOLUMES MUST BE REPORTED TO APPROPRIATE REGULATORY AGENCIES.
- ALL WORK-RELATED ACCIDENTS, INJURIES, NEAR MISSES, AND UNSAFE CONDITIONS OR ACTS, REGARDLESS OF SEVERITY, SHALL BE IMMEDIATELY REPORTED TO AN ONSITE SERVICE COMPANY SUPERVISOR AND A BAYLESS REPRESENTATIVE.
- NO SMOKING IS ALLOWED AT WORK SITE EXCEPT FOR IN DESIGNATED AREAS.
- NO WORK, PARKING, OR OTHER ACTIVITIES SHOULD TAKE PLACE OUTSIDE OF THE PREVIOUSLY DISTURBED WORK AREA (LOCATION).

OCCASIONALLY, EVENTS NECESSITATE DEVIATING FROM THE COMPLETION PROCEDURE. IF SAFETY IS AT RISK, PERFORM THE NECESSARY CHANGES AND THEN NOTIFY THE BAYLESS REPRESENTATIVES LISTED ON PAGE ONE. OTHERWISE, BEFORE ANY CHANGES ARE MADE TO THE PROCEDURE, CHANGES NEED TO BE CLEARED WITH ONE OF THE PEOPLE ON THE CONTACT LIST.

DETAILED PROCEDURE:

1. MIRU workover rig with pump rig pit and 3M BOP. Anchors have been previously set and tested.
2. Move in Hot oil Truck and pump 60 bbl of hot oil down tubing casing annulus.
3. Move in Hot oil Truck and pump 60 bbl of hot oil down tubing casing annulus.
4. Unseat pump and pump 20 bbl hot oil down tubing to flush.
5. TOOH with Rods and Pump as follows:

1-1/4"x16' polished rod (16' in)	16
1 - 7/8" x 2' pony rod	2
119 7/8"x25' sucker rods	2975
2"x1-1/2"x12'	12
Total	3005

6. TOOH with 3036 ft of 2 3/8" tubing (talley tubing out of hole).

KB	3
hanger	0.8
64 - 2-3/8" 4.7# J-55 EUE	1950.83
2-3/8" x 7" XO Sub	0.71
2 7/8" x 7" PSI-x RHR	7.45
2-3/8" x 7" XO Sub	0.71
33 - 2-3/8" 4.7# J-55 EUE	1039.44
SN	1.5
1- 2-3/8" 4.7# J-55 EUE	31.07
TOTAL	3035.51

7. Remove 2 3/8" x 4.5 " wellhead.
8. Move in casing crew and float.
9. Un-seat packer at 2,100 ft.
10. TOOH with 2,100' of 4.5" J-55 11.6# casing and lay down.
11. Pick up 2 3/8" x 7" packer. TIH and tag top of liner at 2,170'
12. Set packer just above liner top.
13. Swab well to determine until water cut decreases.

14. Un-seat packer and TOO H of hole with tubing.
15. MI 5.5" x 7" external packer and hand.
16. Move in 5.5" 15.5#/ft J-55 Casing and casing crew.
17. Pick up packer and Cement Stage tool assembly and run per tool hand specifications.
18. PU and TIH with 2,150 ft of 5.5" casing and set packer.
19. Drop shifting bomb and shift cement stage tool. Establish circulation to rig tank.
20. Open up 7" annulus and check for circulation to tank.
21. Move in and Rig up Cement pumps and Cement 5.5" as follows:
 140 bbl of Premium Grade G 11.0# gal cement; 3.82 cf/sx; (203 sxs)
 Displace with 50 bbl of produced Water
22. WOC
23. MIRU Air Unit.
24. Pick up 4 3/4" Bit and TIH. Tag TOC Cement and establish Circulation
25. Drill out Stage tool and Chase Debris to bottom. Tag fill. Clean out if necessary.
26. Nipple up new 2 3/8" wellhead and change pipe rams on BOP.
27. Nipple up BOP and TIH with production tubing as follows:

KB	3
hanger	0.8
64 - 2-3/8" 4.7# J-55 EUE	1950.83
33 - 2-3/8" 4.7# J-55 EUE	1039.44
SN	1.5
1- 2-3/8" 4.7# J-55 EUE	31.07
TOTAL	3026.64

28. Swab well to check water cuts.
29. TIH with Rods and Pump as follows:

1-1/4"x16' polished rod (16' in)	16
1 - 7/8" x 2' pony rod	2
118 7/8"x25' sucker rods	2975
2"x1-1/2"x12'	12
Total	3005

30. Return well to pump.

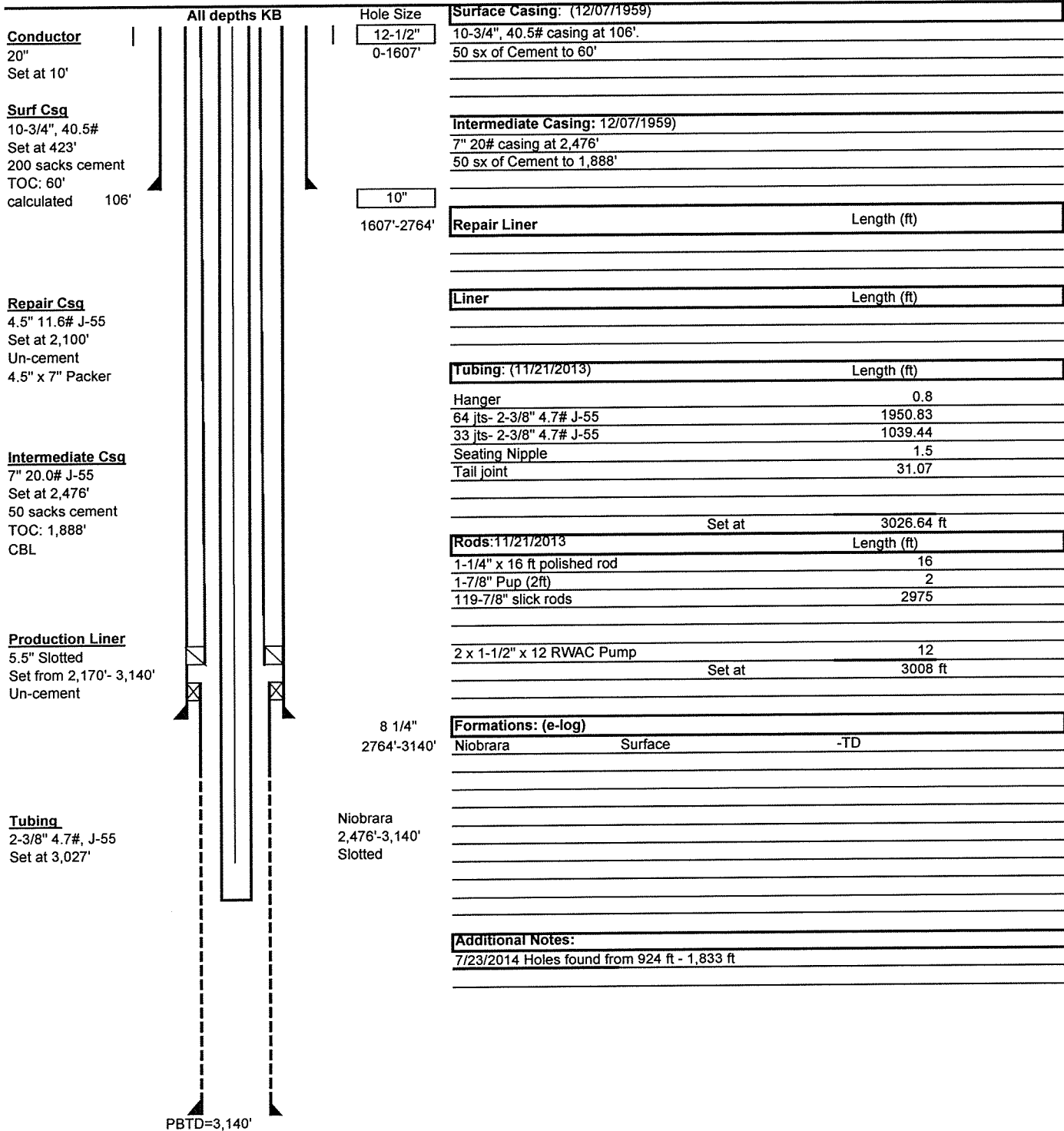
31. RDMO

ROBERT L BAYLESS, PRODUCER LLC
PO Box 168
Farmington, New Mexico 87499
505-326-2659
505-326-6911 fax

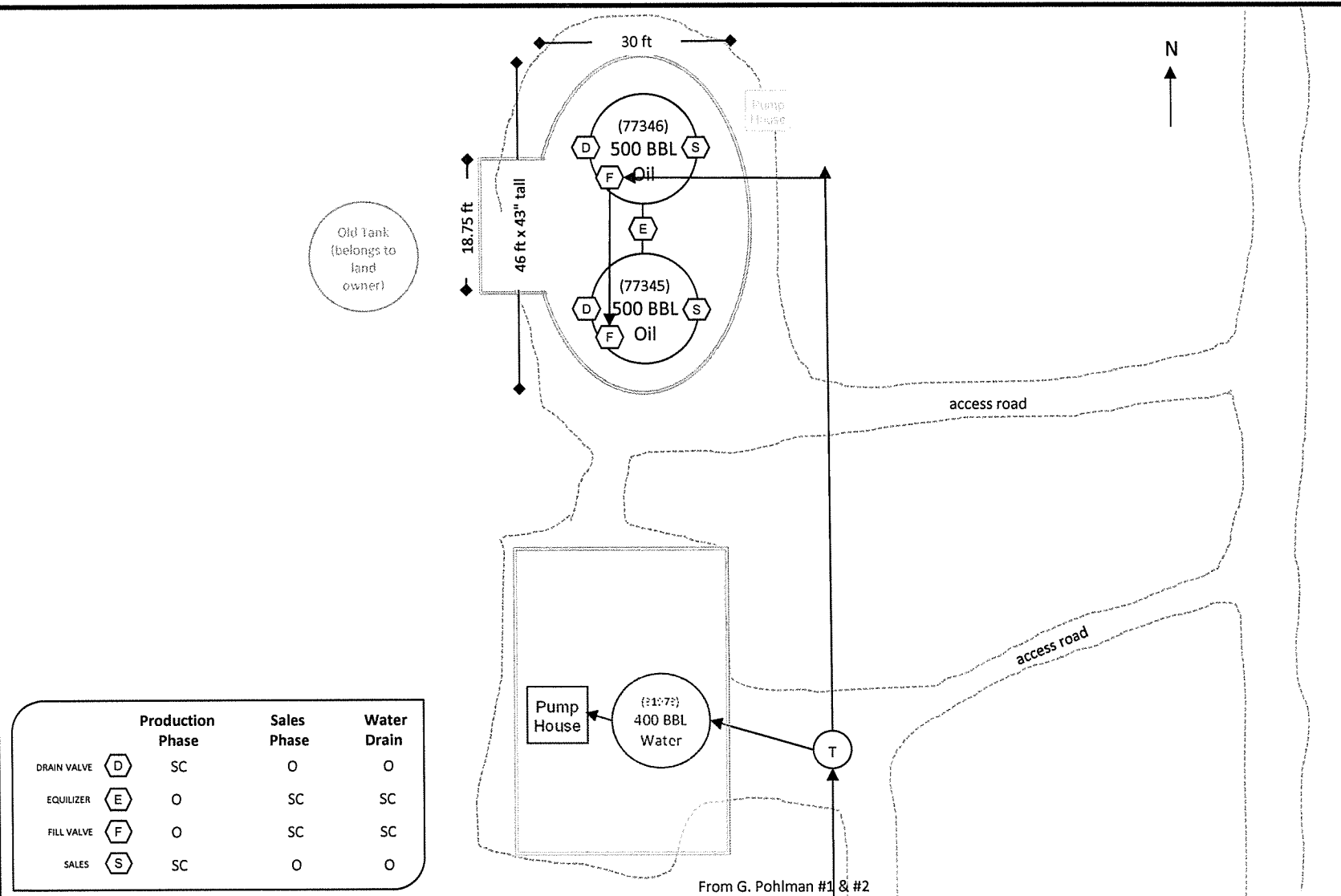
Wellbore Schematic

Well Name: GOVERNMENT POHLMAN 1
S.H. Location: NWNW 15-4N-91W 225FNL 260FWL
B.H. Location: NWNW 15-4N-91W 225FNL 260FWL
County: MOFFAT COUNTY, CO
API #: 05-081-05169
Co-ordinates: 40.326579 N LAT, 107.600422 W LON
Elevations: GROUND: 6981'
KB: 3'
Depths (KB): PBTD: 3140'
TD: 3140'

Date Prepared: 3/25/2014
Last Updated: 2/24/2014
Spud Date: 9/11/1926
Completion Date: 2/12/1927
Last Workover Date: 11/21/2013



Site Facility Diagram



REMARKS:

Map not to scale.

Updated 2/7/2012 - HT

This lease is subject to the site security plan for Robert L. Bayless, Producer LLC. The plan is located at:
Robert L. Bayless, Producer LLC
PO Box 168
368 NM Highway 170
Farmington, NM 87499

Robert L. Bayless, Producer LLC

GOV'T POHLMAN CTB
225' FNL & 260' FWL
Section 15, T4N, R91W
Moffat County, CO
Lease No. COD033221B

ROBERT L BAYLESS, PRODUCER LLC
PO Box 168
Farmington, New Mexico 87499
505-326-2659
505-326-6911 fax

Workover Summary Log

12/7/1959

Well Re-entered. Plugs Drilled and Casing run cemented as Niobrara

10/4/2007

Strip well and change pump

7/1/2009

Strip well and change pump

12/12/2013

Test casing and find holes in 7 inch. Run 4.5" liner to repair holes and test.