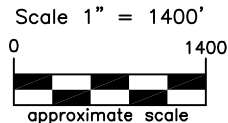


JR Land Surveying, LLC

8114 Northstar Drive
Windsor, Colorado 80528
P. 970-576-4641

WELL LOCATION CERTIFICATE

THIS MAP DOES NOT REPRESENT A BOUNDARY SURVEY



LEGEND

- ◆ found survey monument
- (C) - calculated dimension

(a) Existing Well Data:

Nelson #4
Latitude: N 40.09308°
Longitude: W 105.02985°
FSL: 1946'
FWL: 1974'
ELEV: 4957'
PDOP: 2.0

(b) Existing Well Data:

Ray Nelson 4-4-32
Latitude: N 40.09308°
Longitude: W 105.02932°
FSL: 1946'
FWL: 2123'
ELEV: 4958'
PDOP: 2.4

(c) Existing Well Data:

Ray Nelson 4-6-32
Latitude: N 40.09304°
Longitude: W 105.02932°
FSL: 1931'
FWL: 2123'
ELEV: 4958'
PDOP: 2.4

(d) Existing Well Data:

Ray Nelson 23-32
Latitude: N 40.09300°
Longitude: W 105.02932°
FSL: 1946'
FWL: 2123'
ELEV: 4958'
PDOP: 2.1

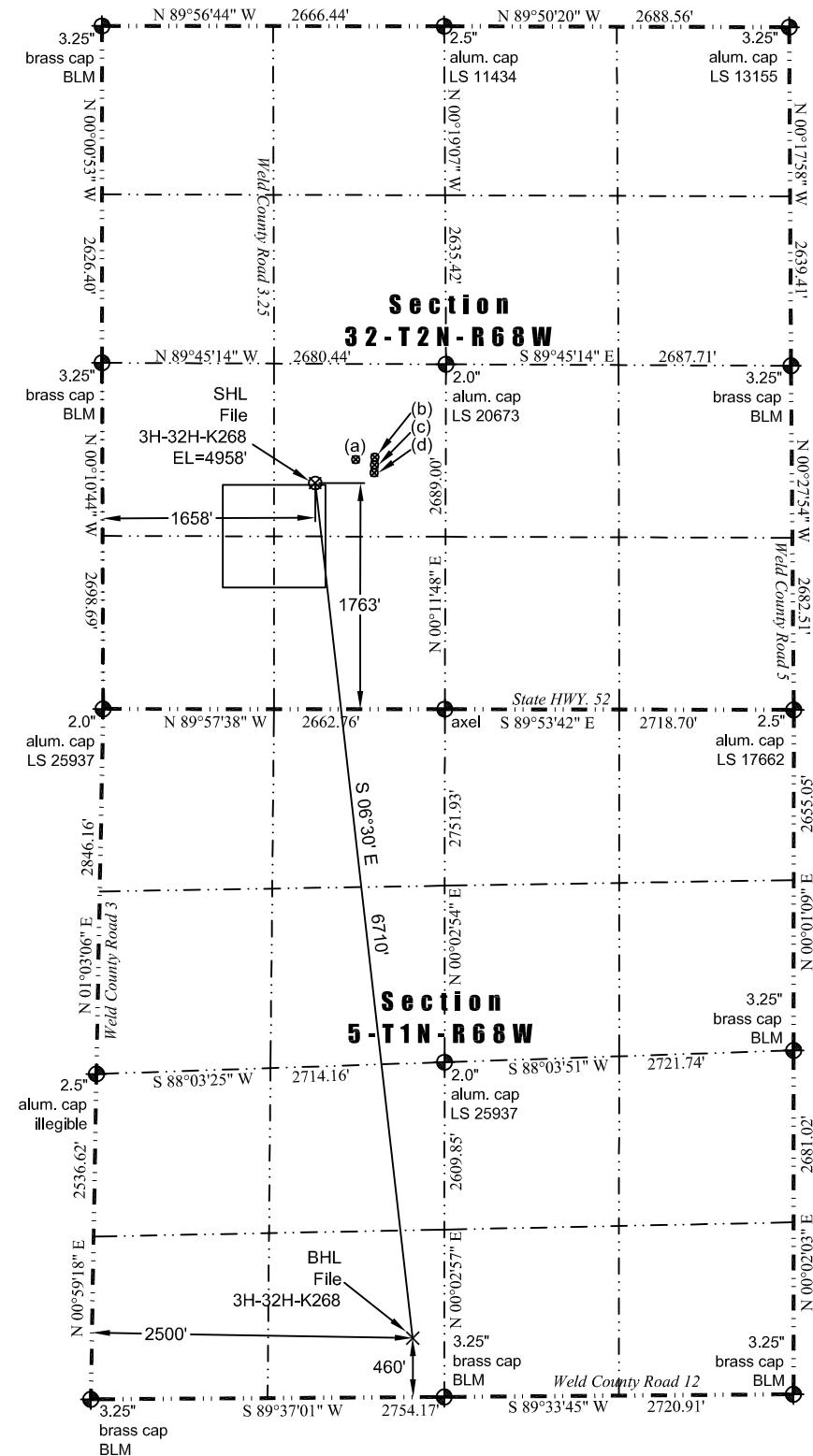
Nearest:

Building Unit: 519' southwest
Above Ground Utility: 315' west
Public Road: 333' west
Railroad: + 5,280'
Property Line: 321' west
Well Window: SHL is 16' outside
Existing Well: Nelson #4, 364' northeast
High Occupancy Building Unit: +5,280'

Proposed Surface Hole Data:

Latitude: N40.09258° (BHL: 40.07427°)
Longitude: W 105.03098° (BHL: 105.02839°)
PDOP: 2.0

In accordance with a request from Jay Knutson of EnCana Oil & Gas (USA) Inc., JR Land Surveying, LLC has determined the location of the **File 3H-32H-K268** well site to be SHL: 1763' FSL and 1658' FWL, (BHL: 460' FSL and 2500' FWL), as measured at ninety (90) degrees from the section lines of Section 32, Township 2 North and Section 5, Township 1 North, Range 68 West of the 6th Principal Meridian, Weld County Colorado.



Notes:

- 1) Bearings and distances based on NAD 83 Colorado North State Plane Coordinate, using RTK GPS observations taken 11/18/13 by operator John Rice
- 2) Conversion factor to ground (1.0002793972).
- 3) Elevations based on NAVD 88 GPS heights and Geoid 2003 corrections.
- 4) See Location Drawing for visible improvements within 500 feet of Pad Site.
- 5) The surface use is a cultivated field.

NOTICE: According to Colorado law you must commence any legal action based upon any defect in this W.L.C. within three years after you first discover such defect. In no event may any action based upon any defect in this W.L.C. be commenced more than ten years from this said date of the certification shown hereon.

John Robert McGehee LS#38219
Well: File 3H-32H-K268 WLC