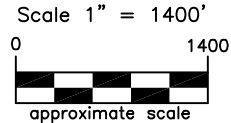


# JR Land Surveying, LLC

8114 Northstar Drive  
Windsor, Colorado 80528  
P. 970-576-4641

## WELL LOCATION CERTIFICATE

THIS MAP DOES NOT REPRESENT A BOUNDARY SURVEY



### LEGEND

- ◆ found survey monument
- (C) - calculated dimension

#### (a) Existing Well Data:

Nelson #4  
Latitude: N 40.09308°  
Longitude: W 105.02985°  
FSL: 1946'  
FWL: 1974'  
ELEV: 4957'  
PDOP: 2.0

#### (b) Existing Well Data:

Ray Nelson 4-4-32  
Latitude: N 40.09308°  
Longitude: W 105.02932°  
FSL: 1946'  
FWL: 2123'  
ELEV: 4958'  
PDOP: 2.4

#### (c) Existing Well Data:

Ray Nelson 4-6-32  
Latitude: N 40.09304°  
Longitude: W 105.02932°  
FSL: 1931'  
FWL: 2123'  
ELEV: 4958'  
PDOP: 2.4

#### (d) Existing Well Data:

Ray Nelson 23-32  
Latitude: N 40.09300°  
Longitude: W 105.02932°  
FSL: 1946'  
FWL: 2123'  
ELEV: 4958'  
PDOP: 2.1

#### Nearest:

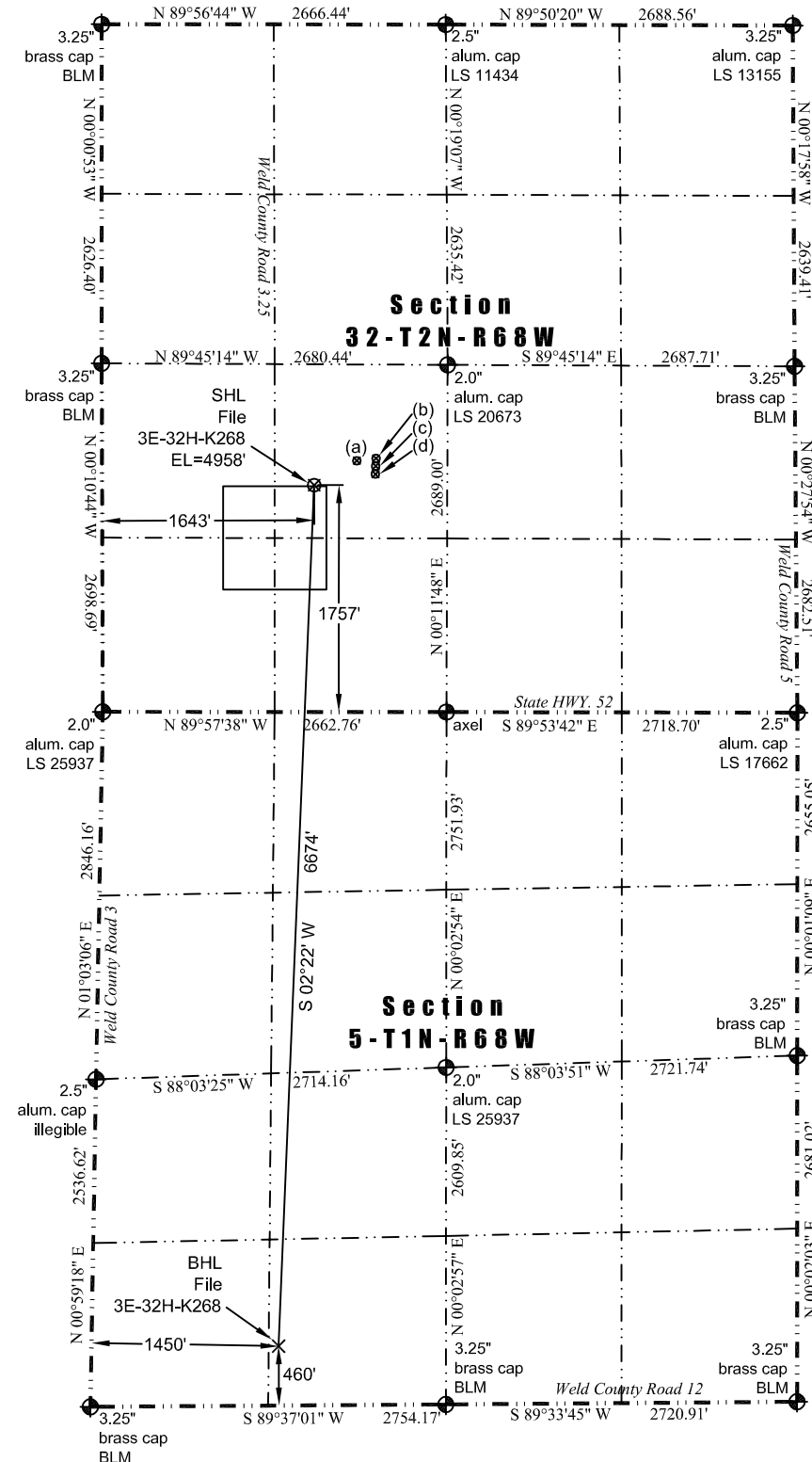
Building: 505' southwest  
Building Unit: 507' southwest  
Above Ground Utility: 300' west  
Public Road: 318' west  
Railroad: + 5,280'  
Property Line: 306' west  
Well Window: SHL is 10' outside  
Existing Well: Nelson #4, 380' northeast  
High Occupancy Building Unit: +5,280'

#### Proposed Surface Hole Data:

Latitude: N 40.09257° (BHL: 40.07427°)  
Longitude: W 105.03104° (BHL: 105.03215°)  
PDOP: 2.0

I hereby certify that this Well Location Certificate was prepared by me or under my direct supervision on 11/18/2013 for and on behalf of EnCana Oil & Gas (USA) Inc. That it is not a Land Survey Plat or an Improvement Survey Plat and that it is not to be relied upon for establishment of fences, buildings, or other future improvement lines.

John Robert McGehee LS#38219  
Well: File 3E-32H-K268 WLC



### Notes:

- 1) Bearings and distances based on NAD 83 Colorado North State Plane Coordinate, using RTK GPS observations taken 11/18/13 by operator John Rice
- 2) Conversion factor to ground (1.0002793972).
- 3) Elevations based on NAVD 88 GPS heights and Geoid 2003 corrections.
- 4) See Location Drawing for visible improvements within 500 feet of Pad Site.
- 5) The surface use is a cultivated field.

**NOTICE:** According to Colorado law you must commence any legal action based upon any defect in this W.L.C. within three years after you first discover such defect. In no event may any action based upon any defect in this W.L.C. be commenced more than ten years from this said date of the certification shown hereon.