

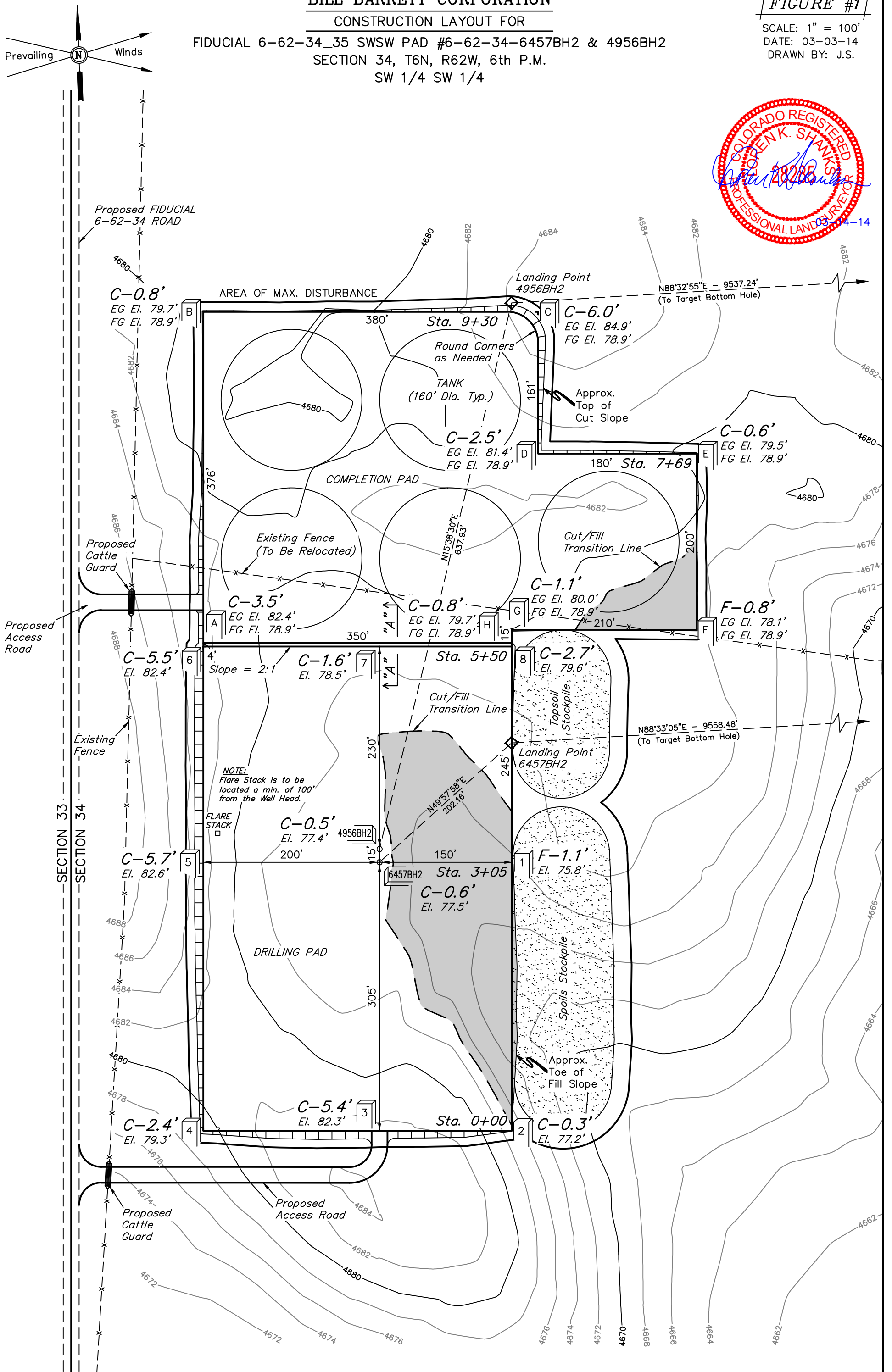
BILL BARRETT CORPORATION

CONSTRUCTION LAYOUT FOR

FIDUCIAL 6-62-34_35 SWSW PAD #6-62-34-6457BH2 & 4956BH2
SECTION 34, T6N, R62W, 6th P.M.
SW 1/4 SW 1/4

FIGURE #1

SCALE: 1" = 100'
DATE: 03-03-14
DRAWN BY: J.S.



Elev. Ungraded Ground At #6-62-34-6457BH2 Loc. Stake = 4677.5'
FINISHED GRADE ELEV. AT #6-62-34-6457BH2 LOC. STAKE = 4676.9'

UINTAH ENGINEERING & LAND SURVEYING
85 So. 200 East * Vernal, Utah 84078 * (435) 789-1017

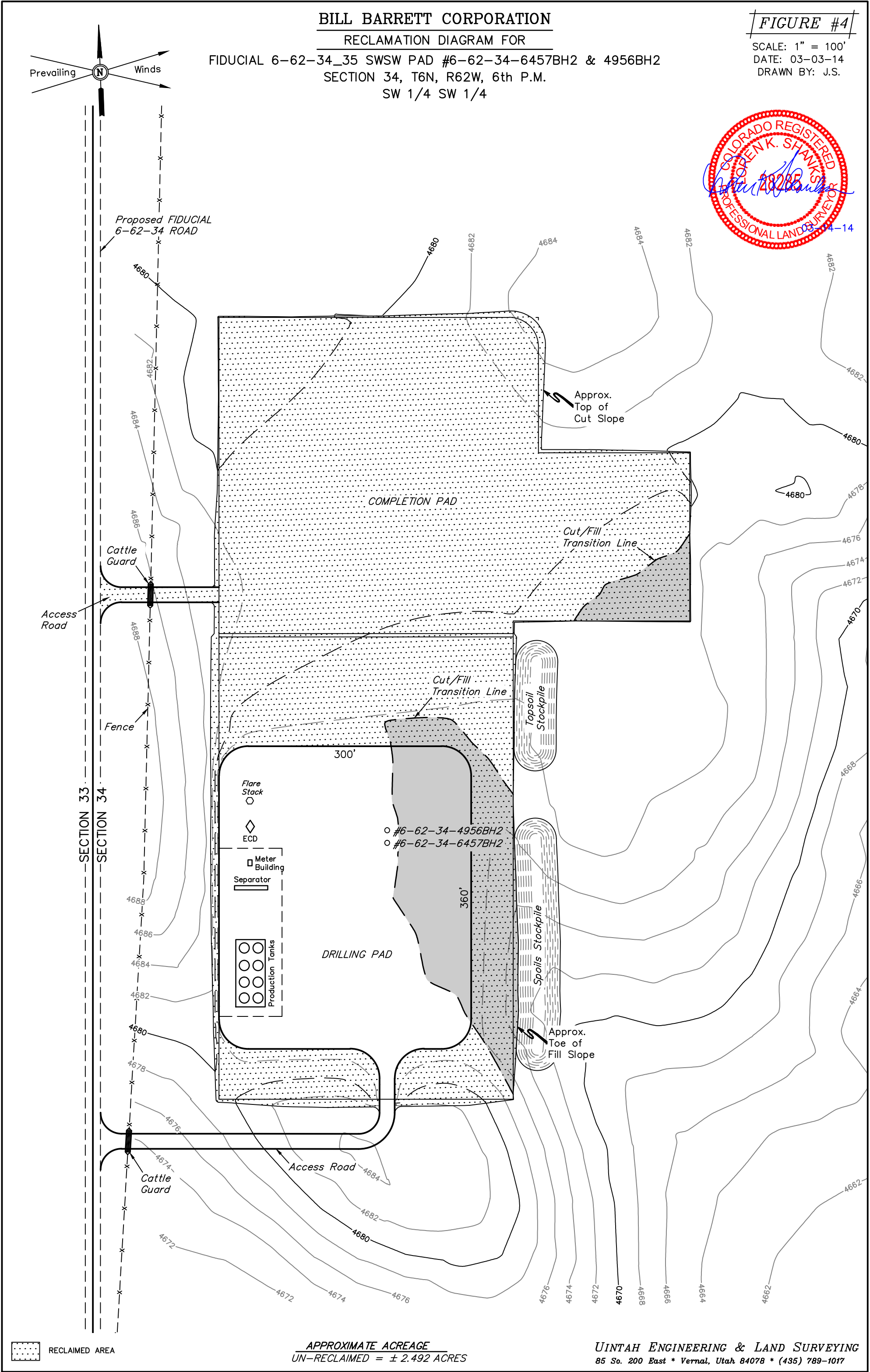
BILL BARRETT CORPORATION

RECLAMATION DIAGRAM FOR

FIDUCIAL 6-62-34_35 SWSW PAD #6-62-34-6457BH2 & 4956BH2
SECTION 34, T6N, R62W, 6th P.M.
SW 1/4 SW 1/4

FIGURE #4

SCALE: 1" = 100'
DATE: 03-03-14
DRAWN BY: J.S.



APPROXIMATE ACREAGE
UN-RECLAIMED = ± 2.492 ACRES

UINTAH ENGINEERING & LAND SURVEYING
85 So. 200 East * Vernal, Utah 84078 * (435) 789-1017