

**ANADARKO PETROLEUM CORP - EBUS  
DO NOT MAIL - PO BOX 4995  
THE WOODLANDS, Texas**

Grenemyer 14C-3HZ

**Majors 42**

## **Post Job Summary** **Cement Surface Casing**

Date Prepared: 12/24/2013  
Version: 1

Service Supervisor: PICKELL, CHRISTOPHER

Submitted by: TRIER, DEREK

**HALLIBURTON**

# HALLIBURTON

## Wellbore Geometry

---

Job Tubulars					MD		Shoe Joint Length ft
Type	Description	Size in	ID in	Wt lbm/ft	Top ft	Bottom ft	
Casing	9 5/8" Surface Casing	9.63	8.921	36.00	0.00	1,096.00	43.00
Open Hole Section	13 1/2" Open Hole Section		13.500		0.00	1,107.00	0.00

# HALLIBURTON

## ***Pumping Schedule***

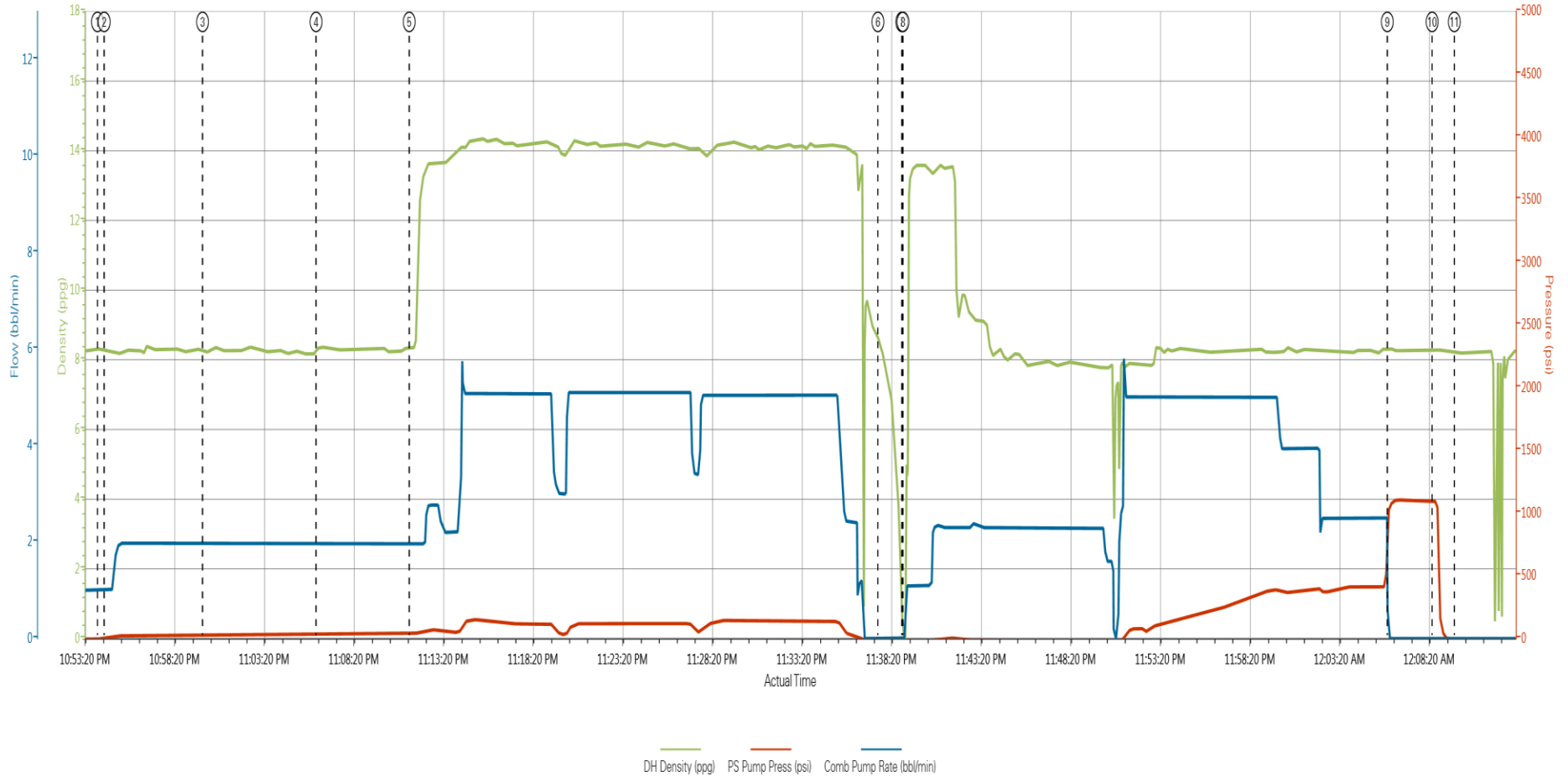
---

Stage /Plug #	Fluid #	Fluid Type	Fluid Name	Surface Density lbm/gal	Avg Rate bbl/min	Surface Volume	Downhole Volume
1	1	Spacer	Fresh Water Spacer	8.33	2.00	10.0 bbl	10.0 bbl
1	2	Spacer	Mud Flush	8.40	2.00	12.0 bbl	12.0 bbl
1	1	Spacer	Fresh Water Spacer	8.33	2.00	10.0 bbl	10.0 bbl
1	3	Cement Slurry	SwiftCem B2	14.20	5.00	413.0 sacks	413.0 sacks

# HALLIBURTON

## Data Acquisition

GRENEMYER 14C-3HZ (9 5/8" SURFACE)



① Start Job 8:29:31    ④ Pump Water 8:34:36;1,9    ⑦ Drop Top Plug 0:07:21,0    ⑩ Check Floats 8:29:1099;0  
 ② Pump Water 8:24:8,1    ⑤ Pump Swiftcem 14.2# 8:36:44;1,9    ⑧ Pump Displacement 0:18:21,0    ⑪ End Job 8:25:14,0  
 ③ Pump Mudflush 8:26:27;1,9    ⑥ Shutdown 8:39:20,0    ⑨ Bump Plug 8:28:1045,0

# HALLIBURTON

## Service Supervisor Reports

### Job Log

Date/Time	Chart #	Activity Code	Pump Rate	Cum Vol	Pump		Pressure (psig)		Comments
12/08/2013 15:00		Call Out							CREW CALLED OUT AT 1500 TO BE ON LOCATION AT 1930. CREW WAS CHRIS PICKELL, ROY NESBITT, BRANDON ALVAREZ, JASON VIATOR
12/08/2013 18:00		Depart from Service Center or Other Site							SAFETY MEETING HELD FOR JOURNEY. THEN LEFT THE YARD FOR MAJOR 42
12/08/2013 18:30		Arrive At Loc							ARRIVE AT LOCATION 1 HOUR EARLY. RIG HAD ROUGHLY 15 JOINTS LEFT. NO CONTAINMENT ON LOCATION. CALLED HOT SHOTS HAULING TO BRING CONTAINMENT. THEY ARRIVED IN 5 MINUTES. RIG ON BOTTOM AT 2000. LAB TEST DID NOT HIT DESIRED BC. RETESTED WITH SAME RESULT.
12/08/2013 18:50		Rig-Up Equipment							HAZARD HUNT PERFORMED. WATER TEST DONE. RIG UP PLANNED AND EXICUTED
12/08/2013 22:35		Pre-Job Safety Meeting							ENGINEER FOR ANADARKO, JOSH MALLORY, GAVE APPROVAL TO PUMP THE JOB WITH THE CEMENT WE HAD ON LOCATION. SAFETY MEETING WITH ALL PERSONEL ON LOCATION TO DISCUSS JOB SAFETY AND PROCEDURE
12/08/2013 22:54		Start Job							CUSTOMER REFUSED TO SIGN WORK ORDER PER WITH BOSS. SAYING THEY HAVE AN MSA. QUICK LATCH PLUG CONTAINER USED ON JOB DID NOT PRESSURE TEST LINES DO TO JOB STARTING TEMPERATURE OF 4 DEGREES. FLAMELESS RIG HEATER USED ON JOB.
12/08/2013 22:54		Pump Spacer 1	2	10				25.0	PUMP WATER. RETURNS WITH 1 BBL AWAY
12/08/2013 23:00		Pump Spacer 2	2	12				25.0	PUMP MUDFLUSH
12/08/2013 23:06		Pump Spacer 1	2	10				30.0	PUMP WATER
12/08/2013 23:11		Pump Cement	5	113.3				125.0	PUMP SWIFTCM CEMENT 413 SKS 14.2 PPG 1.54 CUFT/SK 7.66 GAL/SK
12/08/2013 23:37		Shutdown							WASH PUMPS AND LINES ON TOP OF THE PLUG
12/08/2013 23:39		Drop Top Plug							PLUG PRELOADED. WITNESSED BY COMPANY
12/08/2013 23:39		Pump Displacement	5	82				450.0	PUMP DISPLACEMENT USING WATER
12/09/2013 00:06		Bump Plug	2.5					420.0	CALCULATED PRESSURE TO LAND WAS 321. PLUG LANDED WITH 420 PSI GOING 500 PSI OVER
12/09/2013 00:08		Check Floats						1099.0	PRESSURE WAS HELD FOR 2 MINUTES THEN RELEASED. FLOATS HELD. 1/2 BBL BACK TO TANKS
12/09/2013 00:09		End Job							21 BBL OF CEMENT TO SURFACE
12/09/2013 00:10		Pre-Rig Down Safety Meeting							SAFETY MEETING HELD TO DISCUSS RIG DOWN SAFETY AND PROCEDURE
12/09/2013 00:15		Rig-Down Equipment							RIG DOWN ALL EQUIPMENT
12/09/2013 02:00		Depart Location for Service Center or Other Site							LEAVE LOCATION FOR THE YARD

## The Road to Excellence Starts with Safety

Sold To #: 300466	Ship To #: 3204741	Quote #:	Sales Order #: 900954789
Customer: ANADARKO PETROLEUM CORP - EBUS		Customer Rep: Porter, Bob	
Well Name: Grenemyer		Well #: 14C-3HZ	API/UWI #:
Field: WATTENBERG	City (SAP): LOCHBUIE	County/Parish: Weld	State: Colorado
Contractor: Majors		Rig/Platform Name/Num: Majors 42	
Job Purpose: Cement Surface Casing			
Well Type: Development Well		Job Type: Cement Surface Casing	
Sales Person: PLIENESS, RYAN		Srv Supervisor: PICKELL, CHRISTOPHER	MBU ID Emp #: 396838

## Job Personnel

HES Emp Name	Exp Hrs	Emp #	HES Emp Name	Exp Hrs	Emp #	HES Emp Name	Exp Hrs	Emp #
ALVAREZ, BRANDON Paul	0.0	555850	NESBITT, ROY Iverson	0.0	537416	PICKELL, CHRISTOPHER Lee	0.0	396838
VIATOR, JASON R.	0.0	550394						

## Equipment

HES Unit #	Distance-1 way	HES Unit #	Distance-1 way	HES Unit #	Distance-1 way	HES Unit #	Distance-1 way
10972458	8 mile	11064046C	8 mile	11526488	8 mile	11605597	8 mile
11667703C	8 mile						

## Job

## Job Times

Formation Name				Date	Time	Time Zone
Formation Depth (MD)	Top	Bottom		Called Out	08 - Dec - 2013	15:00 MST
Form Type	BHST			On Location	08 - Dec - 2013	18:30 MST
Job depth MD	1107. ft			Job Started	08 - Dec - 2013	22:54 MST
Water Depth	Wk Ht Above Floor 5. ft			Job Completed	09 - Dec - 2013	00:09 MST
Perforation Depth (MD)	From	To		Departed Loc	09 - Dec - 2013	02:00 MST

## Well Data

Description	New / Used	Max pressure psig	Size in	ID in	Weight lbm/ft	Thread	Grade	Top MD ft	Bottom MD ft	Top TVD ft	Bottom TVD ft
13 1/2" Open Hole Section				13.5				.	1107.		
9 5/8" Surface Casing	Unknown		9.625	8.921	36.		J-55	.	1096.		

Sales/Rental/3<sup>rd</sup> Party (HES)

Description	Qty	Qty uom	Depth	Supplier
CMT CASING EQUIPMENT BOM	1	JOB		
MILEAGE FOR CEMENTING CREW,ZI	20	MI		
ZI FUEL SURCHG-CARS/PICKUPS<1 1/2TON	20	MI		
KIT,HALL WELD-A	1	EA		
CNTRLZR, 9 5/8"x13 3/4',#500-0963-1375	7	EA		
Description	Qty	Qty uom	Depth	Supplier
BASKET - CEMENT - 9-5/8 CSG X 12-1/4	1	EA		
PLUG,CMTG,TOP,9 5/8,HWE,8.16 MIN/9.06 MA	1	EA		
COLLAR-STOP-9 5/8"-FRICTION-HINGED	2	EA		

## Fluid Data

Stage/Plug #: 1									
Fluid #	Stage Type	Fluid Name	Qty	Qty uom	Mixing Density lbm/gal	Yield ft <sup>3</sup> /sk	Mix Fluid Gal/sk	Rate bbl/min	Total Mix Fluid Gal/sk
1	Fresh Water Spacer		10.00	bbl	8.33			2.0	
2	Mud Flush		12.00	bbl	8.4			2.0	
3.5 lbm/bbl		MUD FLUSH III, 40 LB SACK (101633304)							
42 gal/bbl		MUD FLUSH III - SBM (528788)							
1	Fresh Water Spacer		10.00	bbl	8.33			2.0	
3	SwiftCem B2	SWIFTCM (TM) SYSTEM (452990)	413.0	sacks	14.2	1.54	7.66	5.0	7.66
7.66 Gal		FRESH WATER							
Calculated Values		Pressures		Volumes					
Displacement	82	Shut In: Instant		Lost Returns	0	Cement Slurry		Pad	
Top Of Cement		5 Min		Cement Returns	21	Actual Displacement	82	Treatment	
Frac Gradient		15 Min		Spacers	32	Load and Breakdown		Total Job	
Rates									
Circulating		Mixing		Displacement		Avg. Job			
Cement Left In Pipe	Amount	43 ft	Reason	Shoe Joint					
Frac Ring # 1 @	ID	Frac ring # 2 @	ID	Frac Ring # 3 @	ID	Frac Ring # 4 @	ID		
The Information Stated Herein Is Correct				Customer Representative Signature					

