

EXTRACTION OIL & GAS

WELD COUNTY, COLORADO

SEC. 36 T6N R66W 6th P.M.

HINER 36NB-21W

ORIGINAL WELLBORE

01 March, 2014

Plan: PROPOSAL #1



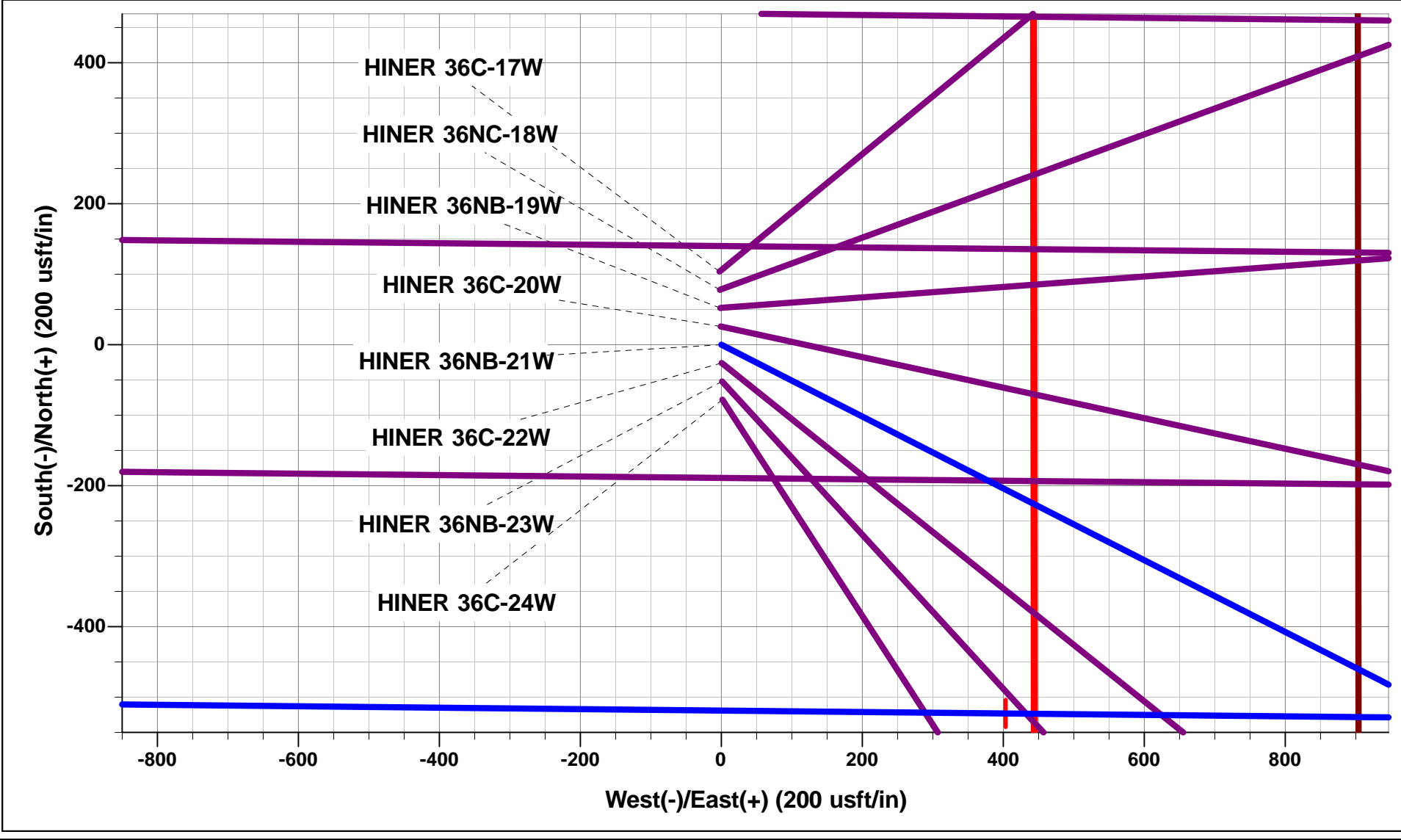


Project: WELD COUNTY, COLORADO
Site: SEC. 36 T6N R66W 6th P.M.
Well: HINER 36NB-21W
Wellbore: ORIGINAL WELLBORE
Design: PROPOSAL #1



ANNOTATIONS										
TVD	MD	Inc	Azi	+N/-S	+E/-W	VSect	Dep	Annotation		
1100.0	1100.0	0.00	0.00	0.0	0.0	0.0	0.0	START NUDDGE (2°/100ft BUR)		
1846.8	1855.5	0.00	116.99	-45.0	88.3	-82.1	99.0	EOB TO 15.11° INC		
5435.6	5572.9	15.11	116.99	-484.7	951.7	-885.7	1068.1	END OF TANGENT		
6182.4	6328.4	0.00	0.00	-529.7	1040.0	-967.9	1167.1	EOD TO VERTICAL		
6212.4	6358.4	0.00	0.00	-529.7	1040.0	-967.9	1167.1	KOP (9°/100ft BUR)		
6849.0	7358.4	90.00	270.58	-523.2	403.4	-336.8	1803.8	ICP - HINER 36NB-21W *NEW*		
6849.0	11673.6	90.00	270.59	-479.1	-3911.6	3940.8	6118.9	BHL - HINER 36NB-21W		

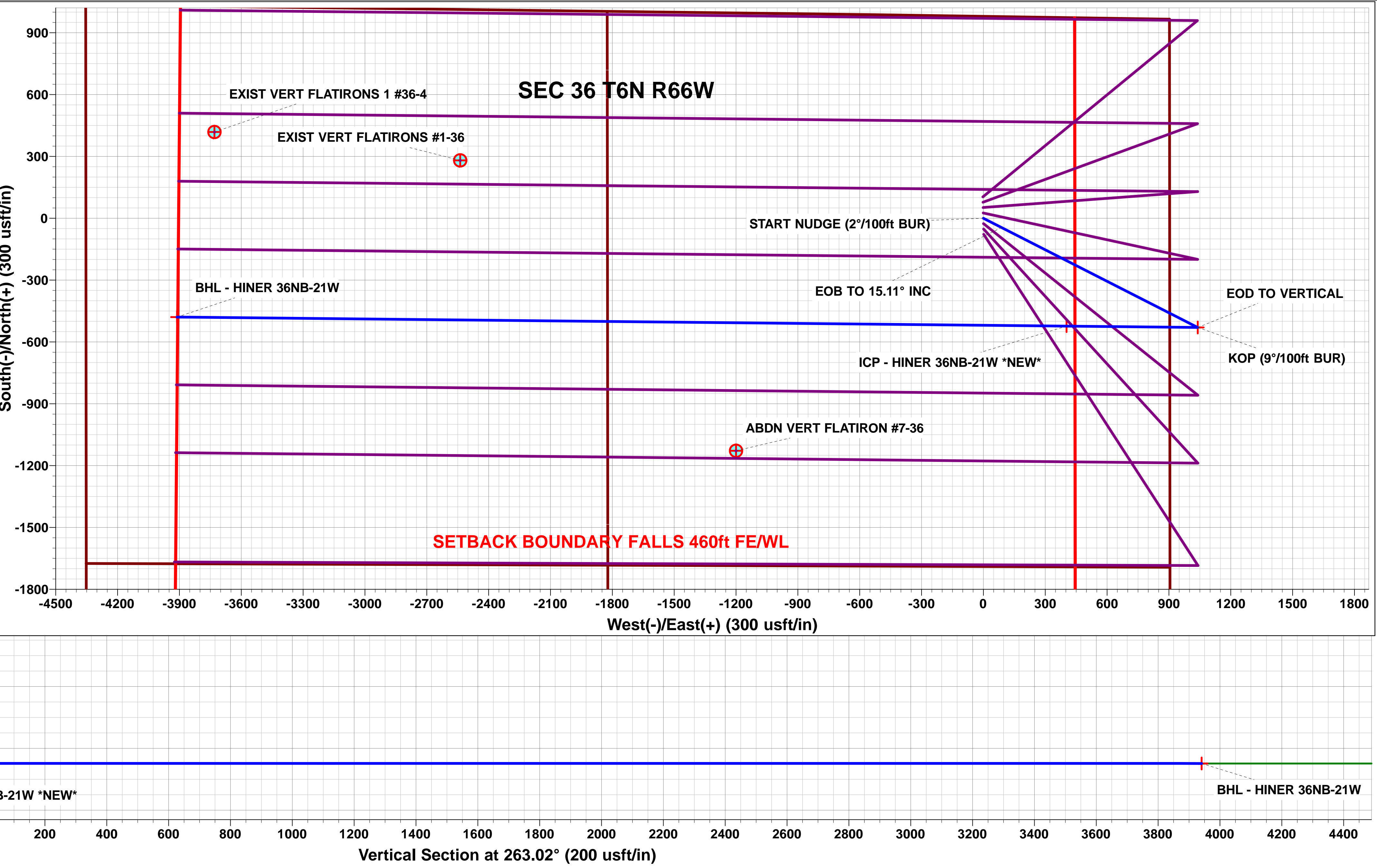
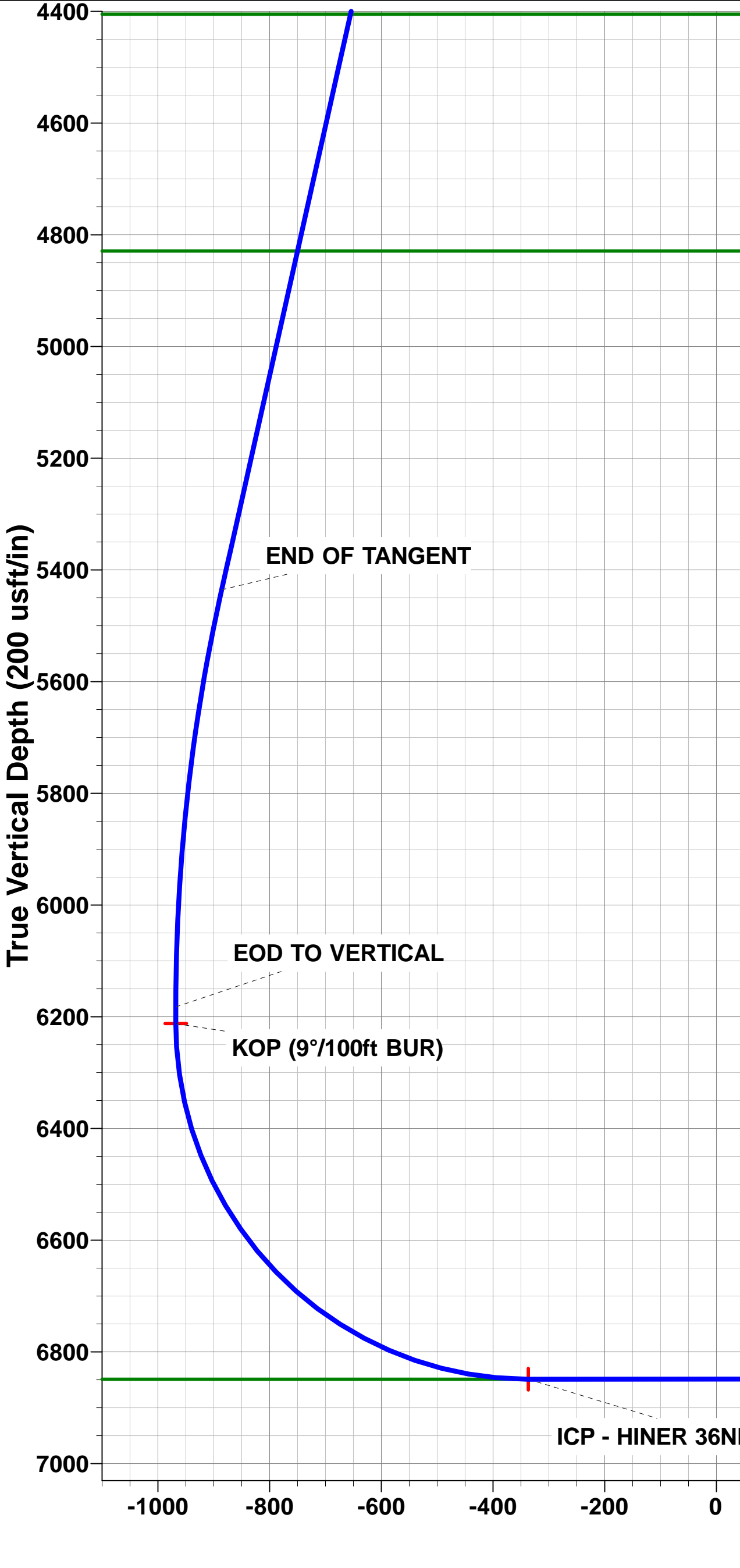
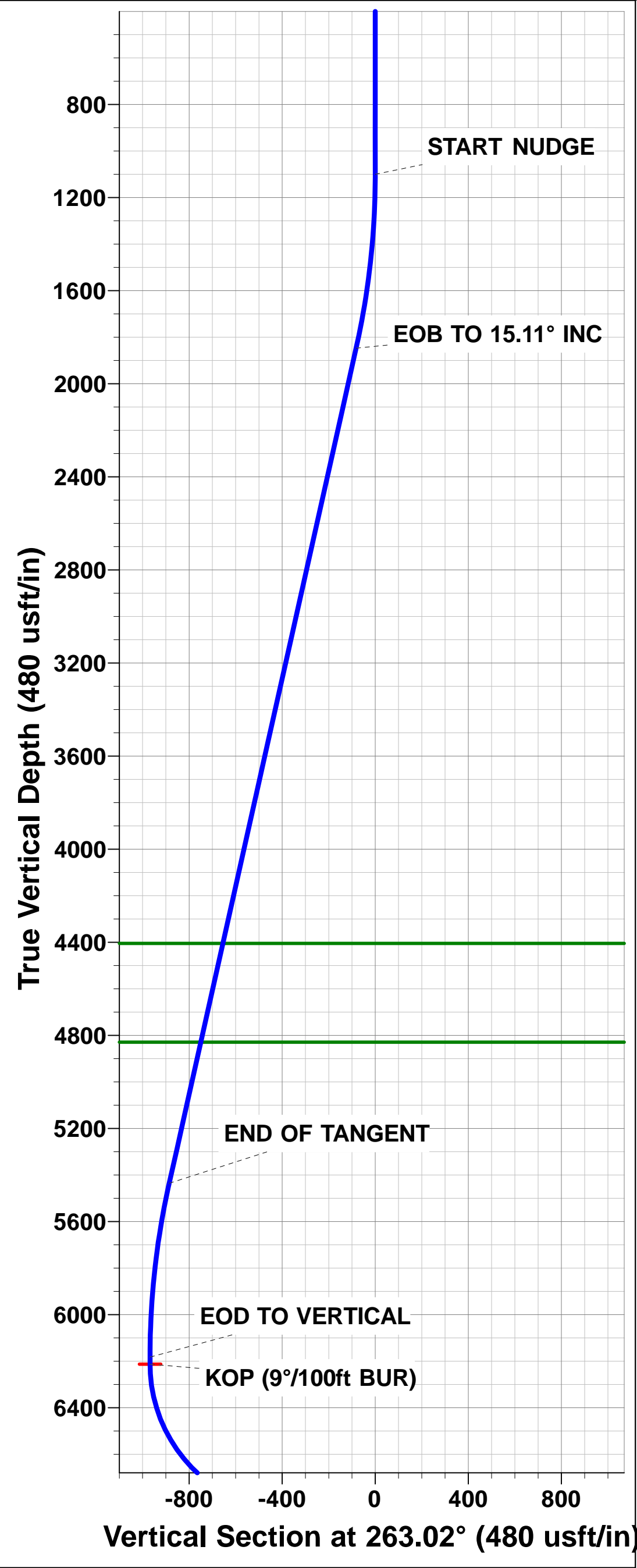
WELLBORE TARGET DETAILS (LAT/LONG)						
Name	TVD	+N/-S	+E/-W	Latitude	Longitude	
BTV - HINER 36NB-21W	6212.4	-529.7	1040.0	40° 26' 52.461 N	104° 42' 55.272 W	
ICP - HINER 36NB-21W *NEW*	6849.0	-523.2	403.4	40° 26' 52.526 N	104° 43' 3.506 W	
BHL - HINER 36NB-21W	6849.0	-479.1	-3911.6	40° 26' 52.958 N	104° 43' 59.318 W	



FORMATION TOP DETAILS		
TVDPath	MDPath	Formation
4405.0	4505.3	SUSSEX
4829.0	4944.5	SHANNON
6849.0	7358.4	NIOBARRA

Azimuths to True North
Magnetic North: 8.48°

Magnetic Field
Strength: 52877.6snT
Dip Angle: 67.00°
Date: 01/03/2014
Model: IGRF2010



Planning Report



Database:	EDM 5000.1 Single User Db	Local Co-ordinate Reference:	Well HINER 36NB-21W
Company:	EXTRACTION OIL & GAS	TVD Reference:	KB-EST @ 4686.0usft (H&P 319)
Project:	WELD COUNTY, COLORADO	MD Reference:	KB-EST @ 4686.0usft (H&P 319)
Site:	SEC. 36 T6N R66W 6th P.M.	North Reference:	True
Well:	HINER 36NB-21W	Survey Calculation Method:	Minimum Curvature
Wellbore:	ORIGINAL WELLBORE		
Design:	PROPOSAL #1		

Project	WELD COUNTY, COLORADO		
Map System:	US State Plane 1983	System Datum:	Mean Sea Level
Geo Datum:	North American Datum 1983		
Map Zone:	Colorado Northern Zone		Using geodetic scale factor

Site	SEC. 36 T6N R66W 6th P.M.		
Site Position:		Northing:	1,407,602.94 usft
From:	Lat/Long	Easting:	3,217,326.94 usft
Position Uncertainty:	0.0 usft	Slot Radius:	13-3/16"
		Latitude:	40° 26' 58.722 N
		Longitude:	104° 43' 8.756 W
		Grid Convergence:	0.50 °

Well	HINER 36NB-21W		
Well Position	+N/-S	-103.8 usft	Northing:
	+E/-W	2.5 usft	Easting:
Position Uncertainty		0.0 usft	Wellhead Elevation:
			Latitude:
			Longitude:
			Ground Level:

Wellbore	ORIGINAL WELLBORE				
Magnetics	Model Name	Sample Date	Declination (°)	Dip Angle (°)	Field Strength (nT)
	IGRF2010	01/03/2014	8.48	67.00	52,878

Design	PROPOSAL #1			
Audit Notes:				
Version:	Phase:	PROTOTYPE	Tie On Depth:	0.0
Vertical Section:	Depth From (TVD) (usft)	+N/-S (usft)	+E/-W (usft)	Direction (°)
	6,849.0	0.0	0.0	263.02

Plan Sections											
MD (usft)	Inc (°)	Azi (°)	Vertical Depth	SS (usft)	+N/-S (usft)	+E/-W (usft)	Dogleg Rate (°/100usf)	Build Rate (°/100usf)	Turn Rate (°/100usf)	TFO (°)	Target
0.0	0.00	0.00	0.0	-4,686.0	0.0	0.0	0.00	0.00	0.00	0.00	
1,100.0	0.00	0.00	1,100.0	-3,586.0	0.0	0.0	0.00	0.00	0.00	0.00	
1,855.5	15.11	116.99	1,846.8	-2,839.2	-45.0	88.3	2.00	2.00	0.00	116.99	
5,572.9	15.11	116.99	5,435.6	749.6	-484.7	951.7	0.00	0.00	0.00	0.00	
6,328.4	0.00	0.00	6,182.4	1,496.4	-529.7	1,040.0	2.00	-2.00	0.00	180.00	
6,358.4	0.00	0.00	6,212.4	1,526.4	-529.7	1,040.0	0.00	0.00	0.00	0.00	BTV - HINER 36NB
7,358.4	90.00	270.58	6,849.0	2,163.0	-523.2	403.4	9.00	9.00	-8.94	270.58	ICP - HINER 36NB
11,673.6	90.00	270.59	6,849.0	2,163.0	-479.1	-3,911.6	0.00	0.00	0.00	174.29	BHL - HINER 36NB

Planning Report



Database:	EDM 5000.1 Single User Db	Local Co-ordinate Reference:	Well HINER 36NB-21W
Company:	EXTRACTION OIL & GAS	TVD Reference:	KB-EST @ 4686.0usft (H&P 319)
Project:	WELD COUNTY, COLORADO	MD Reference:	KB-EST @ 4686.0usft (H&P 319)
Site:	SEC. 36 T6N R66W 6th P.M.	North Reference:	True
Well:	HINER 36NB-21W	Survey Calculation Method:	Minimum Curvature
Wellbore:	ORIGINAL WELLBORE		
Design:	PROPOSAL #1		

Planned Survey										
MD (usft)	Inc (°)	Azi (°)	TVD (usft)	SS (usft)	+N/-S (usft)	+E/-W (usft)	Vertical Section (usft)	Dogleg Rate (°/100usft)	Build Rate (°/100usft)	Turn Rate (°/100usft)
0.0	0.00	0.00	0.0	4,686.00	0.0	0.0	0.0	0.00	0.00	0.00
100.0	0.00	0.00	100.0	4,586.00	0.0	0.0	0.0	0.00	0.00	0.00
200.0	0.00	0.00	200.0	4,486.00	0.0	0.0	0.0	0.00	0.00	0.00
300.0	0.00	0.00	300.0	4,386.00	0.0	0.0	0.0	0.00	0.00	0.00
400.0	0.00	0.00	400.0	4,286.00	0.0	0.0	0.0	0.00	0.00	0.00
500.0	0.00	0.00	500.0	4,186.00	0.0	0.0	0.0	0.00	0.00	0.00
600.0	0.00	0.00	600.0	4,086.00	0.0	0.0	0.0	0.00	0.00	0.00
700.0	0.00	0.00	700.0	3,986.00	0.0	0.0	0.0	0.00	0.00	0.00
800.0	0.00	0.00	800.0	3,886.00	0.0	0.0	0.0	0.00	0.00	0.00
900.0	0.00	0.00	900.0	3,786.00	0.0	0.0	0.0	0.00	0.00	0.00
1,000.0	0.00	0.00	1,000.0	3,686.00	0.0	0.0	0.0	0.00	0.00	0.00
START NUDGE (2°/100ft BUR)										
1,100.0	0.00	0.00	1,100.0	3,586.00	0.0	0.0	0.0	0.00	0.00	0.00
1,200.0	2.00	116.99	1,200.0	3,486.02	-0.8	1.6	-1.4	2.00	2.00	0.00
1,300.0	4.00	116.99	1,299.8	3,386.16	-3.2	6.2	-5.8	2.00	2.00	0.00
1,400.0	6.00	116.99	1,399.5	3,286.55	-7.1	14.0	-13.0	2.00	2.00	0.00
1,500.0	8.00	116.99	1,498.7	3,187.30	-12.7	24.8	-23.1	2.00	2.00	0.00
1,600.0	10.00	116.99	1,597.5	3,088.53	-19.8	38.8	-36.1	2.00	2.00	0.00
1,700.0	12.00	116.99	1,695.6	2,990.38	-28.4	55.8	-51.9	2.00	2.00	0.00
1,800.0	14.00	116.99	1,793.1	2,892.94	-38.6	75.8	-70.6	2.00	2.00	0.00
EOB TO 15.11° INC										
1,855.5	15.11	116.99	1,846.8	2,839.21	-45.0	88.3	-82.1	2.00	2.00	0.00
1,900.0	15.11	116.99	1,889.7	2,796.27	-50.2	98.6	-91.8	0.00	0.00	0.00
2,000.0	15.11	116.99	1,986.3	2,699.72	-62.0	121.8	-113.4	0.00	0.00	0.00
2,100.0	15.11	116.99	2,082.8	2,603.18	-73.9	145.0	-135.0	0.00	0.00	0.00
2,200.0	15.11	116.99	2,179.4	2,506.64	-85.7	168.3	-156.6	0.00	0.00	0.00
2,300.0	15.11	116.99	2,275.9	2,410.10	-97.5	191.5	-178.2	0.00	0.00	0.00
2,400.0	15.11	116.99	2,372.4	2,313.55	-109.4	214.7	-199.8	0.00	0.00	0.00
2,500.0	15.11	116.99	2,469.0	2,217.01	-121.2	238.0	-221.5	0.00	0.00	0.00
2,600.0	15.11	116.99	2,565.5	2,120.47	-133.0	261.2	-243.1	0.00	0.00	0.00
2,700.0	15.11	116.99	2,662.1	2,023.92	-144.9	284.4	-264.7	0.00	0.00	0.00
2,800.0	15.11	116.99	2,758.6	1,927.38	-156.7	307.6	-286.3	0.00	0.00	0.00
2,900.0	15.11	116.99	2,855.2	1,830.84	-168.5	330.9	-307.9	0.00	0.00	0.00
3,000.0	15.11	116.99	2,951.7	1,734.30	-180.4	354.1	-329.6	0.00	0.00	0.00
3,100.0	15.11	116.99	3,048.2	1,637.75	-192.2	377.3	-351.2	0.00	0.00	0.00
3,200.0	15.11	116.99	3,144.8	1,541.21	-204.0	400.6	-372.8	0.00	0.00	0.00
3,300.0	15.11	116.99	3,241.3	1,444.67	-215.8	423.8	-394.4	0.00	0.00	0.00
3,400.0	15.11	116.99	3,337.9	1,348.13	-227.7	447.0	-416.0	0.00	0.00	0.00
3,500.0	15.11	116.99	3,434.4	1,251.58	-239.5	470.2	-437.6	0.00	0.00	0.00
3,600.0	15.11	116.99	3,531.0	1,155.04	-251.3	493.5	-459.3	0.00	0.00	0.00
3,700.0	15.11	116.99	3,627.5	1,058.50	-263.2	516.7	-480.9	0.00	0.00	0.00
3,800.0	15.11	116.99	3,724.0	961.96	-275.0	539.9	-502.5	0.00	0.00	0.00
3,900.0	15.11	116.99	3,820.6	865.41	-286.8	563.2	-524.1	0.00	0.00	0.00
4,000.0	15.11	116.99	3,917.1	768.87	-298.7	586.4	-545.7	0.00	0.00	0.00
4,100.0	15.11	116.99	4,013.7	672.33	-310.5	609.6	-567.3	0.00	0.00	0.00
4,200.0	15.11	116.99	4,110.2	575.79	-322.3	632.8	-589.0	0.00	0.00	0.00
4,300.0	15.11	116.99	4,206.8	479.24	-334.2	656.1	-610.6	0.00	0.00	0.00
4,400.0	15.11	116.99	4,303.3	382.70	-346.0	679.3	-632.2	0.00	0.00	0.00
4,500.0	15.11	116.99	4,399.8	286.16	-357.8	702.5	-653.8	0.00	0.00	0.00
SUSSEX										
4,505.3	15.11	116.99	4,405.0	281.00	-358.5	703.8	-655.0	0.00	0.00	0.00
4,600.0	15.11	116.99	4,496.4	189.62	-369.6	725.8	-675.4	0.00	0.00	0.00
4,700.0	15.11	116.99	4,592.9	93.07	-381.5	749.0	-697.1	0.00	0.00	0.00

Planning Report



Database:	EDM 5000.1 Single User Db	Local Co-ordinate Reference:	Well HINER 36NB-21W
Company:	EXTRACTION OIL & GAS	TVD Reference:	KB-EST @ 4686.0usft (H&P 319)
Project:	WELD COUNTY, COLORADO	MD Reference:	KB-EST @ 4686.0usft (H&P 319)
Site:	SEC. 36 T6N R66W 6th P.M.	North Reference:	True
Well:	HINER 36NB-21W	Survey Calculation Method:	Minimum Curvature
Wellbore:	ORIGINAL WELLBORE		
Design:	PROPOSAL #1		

Planned Survey

MD (usft)	Inc (°)	Azi (°)	TVD (usft)	SS (usft)	+N/-S (usft)	+E/-W (usft)	Vertical Section (usft)	Dogleg Rate (°/100usft)	Build Rate (°/100usft)	Turn Rate (°/100usft)
4,800.0	15.11	116.99	4,689.5	-3.47	-393.3	772.2	-718.7	0.00	0.00	0.00
4,900.0	15.11	116.99	4,786.0	-100.01	-405.1	795.4	-740.3	0.00	0.00	0.00
SHANNON										
4,944.5	15.11	116.99	4,829.0	-143.00	-410.4	805.8	-749.9	0.00	0.00	0.00
5,000.0	15.11	116.99	4,882.6	-196.55	-417.0	818.7	-761.9	0.00	0.00	0.00
5,100.0	15.11	116.99	4,979.1	-293.10	-428.8	841.9	-783.5	0.00	0.00	0.00
5,200.0	15.11	116.99	5,075.6	-389.64	-440.6	865.1	-805.1	0.00	0.00	0.00
5,300.0	15.11	116.99	5,172.2	-486.18	-452.5	888.4	-826.8	0.00	0.00	0.00
5,400.0	15.11	116.99	5,268.7	-582.73	-464.3	911.6	-848.4	0.00	0.00	0.00
5,500.0	15.11	116.99	5,365.3	-679.27	-476.1	934.8	-870.0	0.00	0.00	0.00
END OF TANGENT										
5,572.9	15.11	116.99	5,435.6	-749.61	-484.7	951.7	-885.7	0.00	0.00	0.00
5,600.0	14.57	116.99	5,461.8	-775.84	-487.9	957.9	-891.5	2.00	-2.00	0.00
5,700.0	12.57	116.99	5,559.0	-873.05	-498.5	978.8	-911.0	2.00	-2.00	0.00
5,800.0	10.57	116.99	5,657.0	-971.01	-507.6	996.7	-927.6	2.00	-2.00	0.00
5,900.0	8.57	116.99	5,755.6	-1,069.62	-515.2	1,011.5	-941.4	2.00	-2.00	0.00
6,000.0	6.57	116.99	5,854.7	-1,168.74	-521.2	1,023.2	-952.3	2.00	-2.00	0.00
6,100.0	4.57	116.99	5,954.3	-1,268.26	-525.6	1,031.9	-960.3	2.00	-2.00	0.00
6,200.0	2.57	116.99	6,054.1	-1,368.06	-528.4	1,037.4	-965.5	2.00	-2.00	0.00
6,300.0	0.57	116.99	6,154.0	-1,468.02	-529.6	1,039.9	-967.8	2.00	-2.00	0.00
EOD TO VERTICAL										
6,328.4	0.00	0.00	6,182.4	-1,496.40	-529.7	1,040.0	-967.9	2.00	-2.00	0.00
KOP (9°/100ft BUR)										
6,358.4	0.00	0.00	6,212.4	-1,526.40	-529.7	1,040.0	-967.9	0.00	0.00	0.00
6,400.0	3.75	270.58	6,254.0	-1,567.99	-529.7	1,038.6	-966.5	9.00	9.00	0.00
6,500.0	12.75	270.58	6,352.9	-1,666.86	-529.5	1,024.3	-952.3	9.00	9.00	0.00
6,600.0	21.75	270.58	6,448.3	-1,762.26	-529.2	994.7	-923.0	9.00	9.00	0.00
6,700.0	30.75	270.58	6,537.9	-1,851.86	-528.8	950.5	-879.2	9.00	9.00	0.00
6,800.0	39.75	270.58	6,619.4	-1,933.44	-528.2	892.9	-822.0	9.00	9.00	0.00
6,900.0	48.75	270.58	6,691.0	-2,005.00	-527.5	823.2	-752.9	9.00	9.00	0.00
7,000.0	57.75	270.58	6,750.8	-2,064.78	-526.7	743.1	-673.6	9.00	9.00	0.00
7,100.0	66.75	270.58	6,797.3	-2,111.29	-525.8	654.7	-586.0	9.00	9.00	0.00
7,200.0	75.75	270.58	6,829.4	-2,143.41	-524.8	560.1	-492.2	9.00	9.00	0.00
7,300.0	84.75	270.58	6,846.3	-2,160.33	-523.8	461.7	-394.6	9.00	9.00	0.00
ICP - HINER 36NB-21W *NEW* - NIOBRARA										
7,358.4	90.00	270.58	6,849.0	-2,163.00	-523.2	403.4	-336.8	9.00	9.00	0.00
7,400.0	90.00	270.59	6,849.0	-2,163.00	-522.8	361.8	-295.5	0.00	0.00	0.00
7,500.0	90.00	270.59	6,849.0	-2,162.99	-521.8	261.8	-196.4	0.00	0.00	0.00
7,600.0	90.00	270.59	6,849.0	-2,162.99	-520.7	161.8	-97.3	0.00	0.00	0.00
7,700.0	90.00	270.59	6,849.0	-2,162.98	-519.7	61.8	1.8	0.00	0.00	0.00
7,800.0	90.00	270.59	6,849.0	-2,162.98	-518.7	-38.2	101.0	0.00	0.00	0.00
7,900.0	90.00	270.59	6,849.0	-2,162.98	-517.7	-138.2	200.1	0.00	0.00	0.00
8,000.0	90.00	270.59	6,849.0	-2,162.97	-516.6	-238.2	299.2	0.00	0.00	0.00
8,100.0	90.00	270.59	6,849.0	-2,162.97	-515.6	-338.2	398.4	0.00	0.00	0.00
8,200.0	90.00	270.59	6,849.0	-2,162.96	-514.6	-438.2	497.5	0.00	0.00	0.00
8,300.0	90.00	270.59	6,849.0	-2,162.96	-513.6	-538.2	596.6	0.00	0.00	0.00
8,400.0	90.00	270.59	6,849.0	-2,162.96	-512.6	-638.2	695.7	0.00	0.00	0.00
8,500.0	90.00	270.59	6,849.0	-2,162.96	-511.5	-738.2	794.9	0.00	0.00	0.00
8,600.0	90.00	270.59	6,849.0	-2,162.95	-510.5	-838.2	894.0	0.00	0.00	0.00
8,700.0	90.00	270.59	6,849.0	-2,162.95	-509.5	-938.1	993.1	0.00	0.00	0.00
8,800.0	90.00	270.59	6,848.9	-2,162.95	-508.5	-1,038.1	1,092.3	0.00	0.00	0.00
8,900.0	90.00	270.59	6,848.9	-2,162.95	-507.5	-1,138.1	1,191.4	0.00	0.00	0.00
9,000.0	90.00	270.59	6,848.9	-2,162.95	-506.4	-1,238.1	1,290.5	0.00	0.00	0.00
9,100.0	90.00	270.59	6,848.9	-2,162.95	-505.4	-1,338.1	1,389.6	0.00	0.00	0.00



Database:	EDM 5000.1 Single User Db	Local Co-ordinate Reference:	Well HINER 36NB-21W
Company:	EXTRACTION OIL & GAS	TVD Reference:	KB-EST @ 4686.0usft (H&P 319)
Project:	WELD COUNTY, COLORADO	MD Reference:	KB-EST @ 4686.0usft (H&P 319)
Site:	SEC. 36 T6N R66W 6th P.M.	North Reference:	True
Well:	HINER 36NB-21W	Survey Calculation Method:	Minimum Curvature
Wellbore:	ORIGINAL WELLBORE		
Design:	PROPOSAL #1		

Planned Survey

MD (usft)	Inc (°)	Azi (°)	TVD (usft)	SS (usft)	+N/-S (usft)	+E/-W (usft)	Vertical Section (usft)	Dogleg Rate (°/100usft)	Build Rate (°/100usft)	Turn Rate (°/100usft)
9,200.0	90.00	270.59	6,848.9	-2,162.94	-504.4	-1,438.1	1,488.8	0.00	0.00	0.00
9,300.0	90.00	270.59	6,848.9	-2,162.94	-503.4	-1,538.1	1,587.9	0.00	0.00	0.00
9,400.0	90.00	270.59	6,848.9	-2,162.94	-502.4	-1,638.1	1,687.0	0.00	0.00	0.00
9,500.0	90.00	270.59	6,848.9	-2,162.94	-501.3	-1,738.1	1,786.2	0.00	0.00	0.00
9,600.0	90.00	270.59	6,848.9	-2,162.94	-500.3	-1,838.1	1,885.3	0.00	0.00	0.00
9,700.0	90.00	270.59	6,848.9	-2,162.94	-499.3	-1,938.1	1,984.4	0.00	0.00	0.00
9,800.0	90.00	270.59	6,848.9	-2,162.94	-498.3	-2,038.1	2,083.6	0.00	0.00	0.00
9,900.0	90.00	270.59	6,848.9	-2,162.95	-497.2	-2,138.1	2,182.7	0.00	0.00	0.00
10,000.0	90.00	270.59	6,848.9	-2,162.95	-496.2	-2,238.1	2,281.8	0.00	0.00	0.00
10,100.0	90.00	270.59	6,848.9	-2,162.95	-495.2	-2,338.1	2,380.9	0.00	0.00	0.00
10,200.0	90.00	270.59	6,848.9	-2,162.95	-494.2	-2,438.1	2,480.1	0.00	0.00	0.00
10,300.0	90.00	270.59	6,849.0	-2,162.95	-493.2	-2,538.1	2,579.2	0.00	0.00	0.00
10,400.0	90.00	270.59	6,849.0	-2,162.95	-492.1	-2,638.1	2,678.3	0.00	0.00	0.00
10,500.0	90.00	270.59	6,849.0	-2,162.96	-491.1	-2,738.1	2,777.5	0.00	0.00	0.00
10,600.0	90.00	270.59	6,849.0	-2,162.96	-490.1	-2,838.1	2,876.6	0.00	0.00	0.00
10,700.0	90.00	270.59	6,849.0	-2,162.96	-489.1	-2,938.0	2,975.7	0.00	0.00	0.00
10,800.0	90.00	270.59	6,849.0	-2,162.96	-488.0	-3,038.0	3,074.8	0.00	0.00	0.00
10,900.0	90.00	270.59	6,849.0	-2,162.97	-487.0	-3,138.0	3,174.0	0.00	0.00	0.00
11,000.0	90.00	270.59	6,849.0	-2,162.97	-486.0	-3,238.0	3,273.1	0.00	0.00	0.00
11,100.0	90.00	270.59	6,849.0	-2,162.97	-485.0	-3,338.0	3,372.2	0.00	0.00	0.00
11,200.0	90.00	270.59	6,849.0	-2,162.98	-484.0	-3,438.0	3,471.4	0.00	0.00	0.00
11,300.0	90.00	270.59	6,849.0	-2,162.98	-482.9	-3,538.0	3,570.5	0.00	0.00	0.00
11,400.0	90.00	270.59	6,849.0	-2,162.99	-481.9	-3,638.0	3,669.6	0.00	0.00	0.00
11,500.0	90.00	270.59	6,849.0	-2,162.99	-480.9	-3,738.0	3,768.7	0.00	0.00	0.00
11,600.0	90.00	270.59	6,849.0	-2,163.00	-479.9	-3,838.0	3,867.9	0.00	0.00	0.00
BHL - HINER 36NB-21W										
11,673.6	90.00	270.59	6,849.0	-2,163.00	-479.1	-3,911.6	3,940.8	0.00	0.00	0.00

Formations

MD (usft)	TVD (usft)	Name	Lithology	Dip (°)	Dip Direction (°)
4,505.3	4,405.0	SUSSEX		0.00	
4,944.5	4,829.0	SHANNON		0.00	
7,358.4	6,849.0	NIOBRARA		0.00	

Plan Annotations

MD (usft)	TVD (usft)	Local Coordinates		Comment
		+N/-S (usft)	+E/-W (usft)	
1,100.0	1,100.0	0.0	0.0	START NUDGE (2°/100ft BUR)
1,855.5	1,846.8	-45.0	88.3	EOB TO 15.11° INC
5,572.9	5,435.6	-484.7	951.7	END OF TANGENT
6,328.4	6,182.4	-529.7	1,040.0	EOD TO VERTICAL
6,358.4	6,212.4	-529.7	1,040.0	KOP (9°/100ft BUR)
7,358.4	6,849.0	-523.2	403.4	ICP - HINER 36NB-21W *NEW*
11,673.6	6,849.0	-479.1	-3,911.6	BHL - HINER 36NB-21W