

Caerus Oil & Gas LLC
ISLAND RANCH #13-796
LOCATED IN GARFIELD COUNTY, COLORADO
SECTION 13, T7S, R96W, 6th P.M.

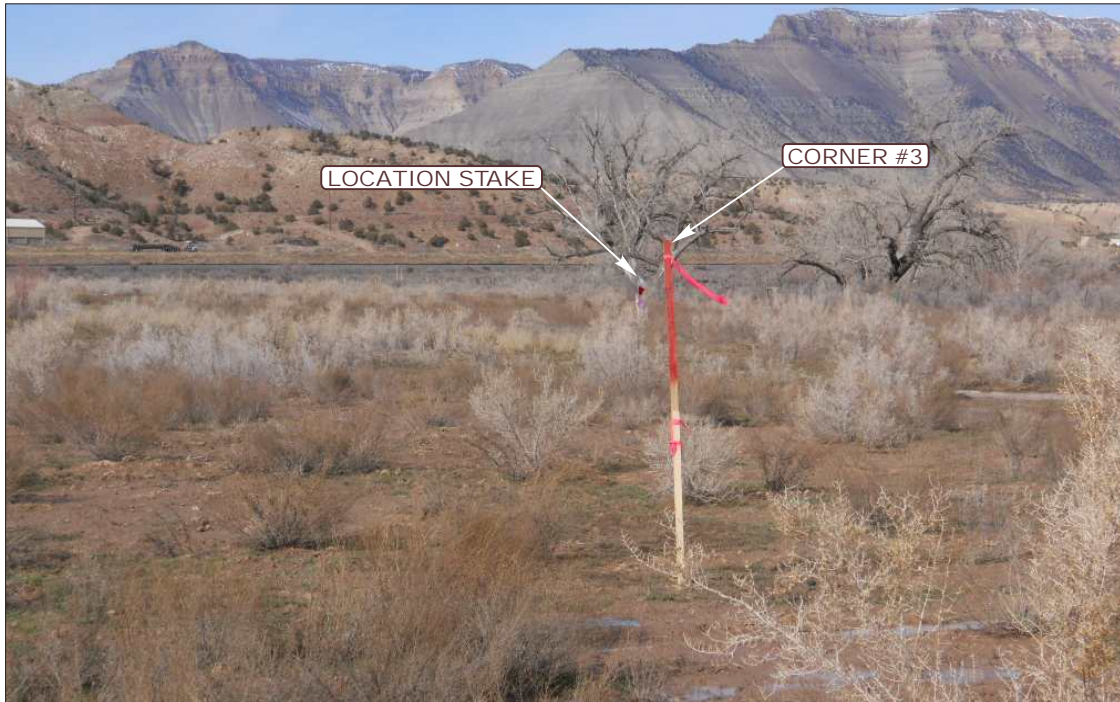


PHOTO: VIEW FROM CORNER #3 TO LOCATION STAKE

CAMERA ANGLE: NORTHERLY



PHOTO: VIEW OF PROPOSED ACCESS

CAMERA ANGLE: SOUTHEASTERLY



- Since 1964 -

UE&S

Uintah Engineering & Land Surveying
85 South 200 East Vernal, Utah 84078
(435) 789-1017 * FAX (435) 789-1813

LOCATION PHOTOS

03 **13** **14**
MONTH DAY YEAR

TAKEN BY: B.B.

DRAWN BY: J.M.F.

REVISED: 00-00-00

PHOTO
P1

Caerus Oil & Gas LLC
ISLAND RANCH #13-796
LOCATED IN GARFIELD COUNTY, COLORADO
SECTION 13, T7S, R96W, 6th P.M.



PHOTO: VIEW OF LOCATION STAKES

CAMERA ANGLE: NORTHERLY



PHOTO: VIEW OF LOCATION STAKES

CAMERA ANGLE: EASTERLY



- Since 1964 -



Uintah Engineering & Land Surveying
85 South 200 East Vernal, Utah 84078
(435) 789-1017 * FAX (435) 789-1813

LOCATION PHOTOS

03 **13** **14**
MONTH DAY YEAR

TAKEN BY: B.B.

DRAWN BY: J.M.F.

REVISED: 00-00-00

PHOTO
P2

Caerus Oil & Gas LLC
ISLAND RANCH #13-796
LOCATED IN GARFIELD COUNTY, COLORADO
SECTION 13, T7S, R96W, 6th P.M.



PHOTO: VIEW OF LOCATION STAKES

CAMERA ANGLE: SOUTHERLY



PHOTO: VIEW OF LOCATION STAKES

CAMERA ANGLE: WESTERLY



- Since 1964 -

UE&S

Uintah Engineering & Land Surveying
85 South 200 East Vernal, Utah 84078
(435) 789-1017 * FAX (435) 789-1813

LOCATION PHOTOS

03
MONTH

13
DAY

14
YEAR

PHOTO
P3

TAKEN BY: B.B.

DRAWN BY: J.M.F.

REVISED: 00-00-00