

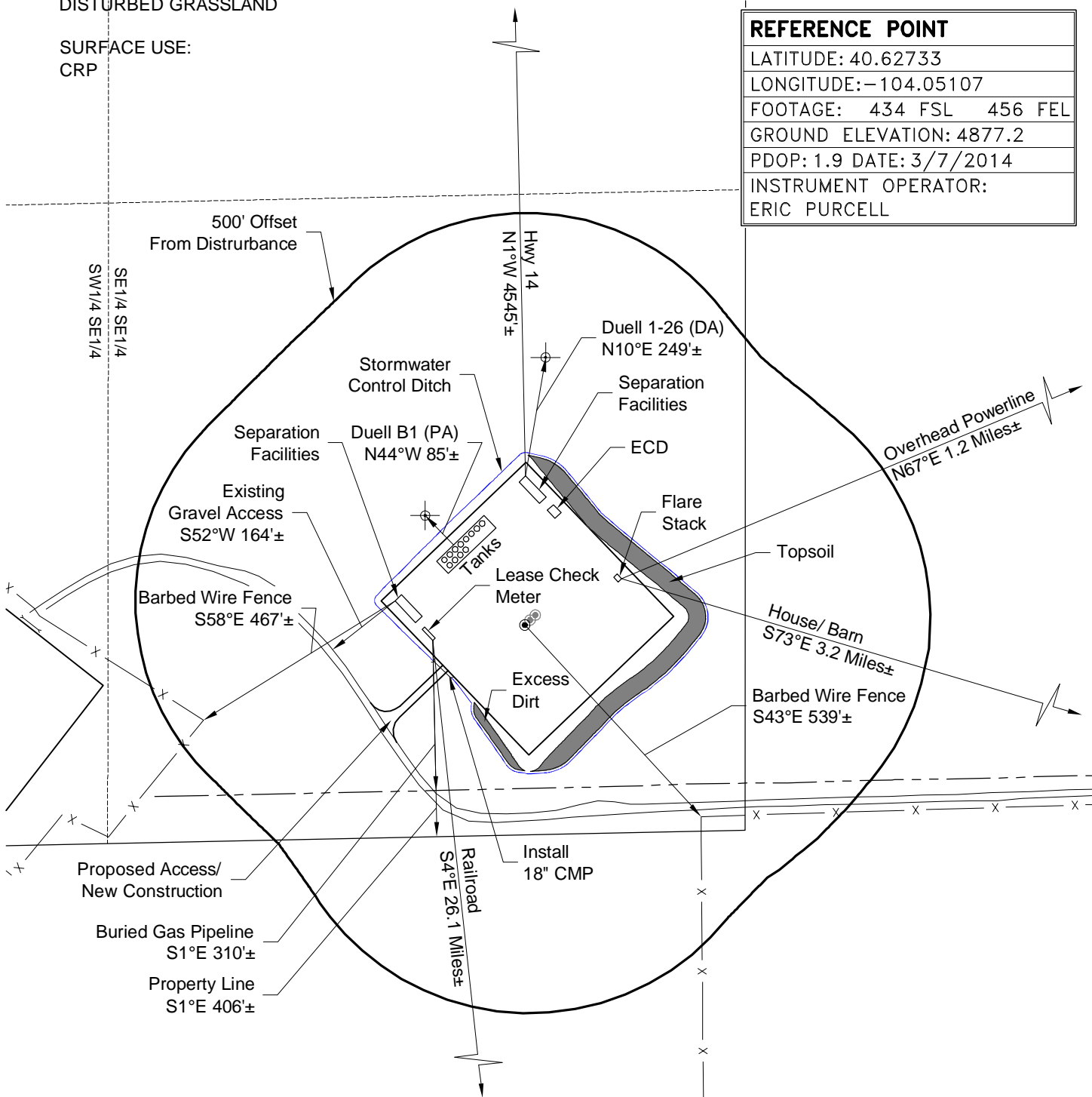
# LOCATION DRAWING

PLANT COMMUNITY:  
DISTURBED GRASSLAND

SURFACE USE:  
CRP

## REFERENCE POINT

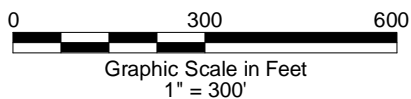
LATITUDE: 40.62733
LONGITUDE: -104.05107
FOOTAGE: 434 FSL 456 FEL
GROUND ELEVATION: 4877.2
PDOP: 1.9 DATE: 3/7/2014
INSTRUMENT OPERATOR: ERIC PURCELL



NOTE:  
ALL PRODUCTION FACILITIES WILL BE ON PAD.

PAD DISTURBANCE ACREAGE:  
6.8± DRILLING OPERATIONS

3/13/14



LAND SURVEYING AND MAPPING  
LAFAYETTE - WINTER PARK  
Ph 303 666 0379 Fx 303 665 6320

**CARRIZO NIOBRARA LLC**  
**HEMBERGER 4-26-8-60 PAD**

**SE1/4 SE1/4 SECTION 26 T8N R60W**  
**6th PM WELD COUNTY COLORADO**