

**ANADARKO PETROLEUM CORP - EBUS
DO NOT MAIL - PO BOX 4995
THE WOODLANDS, Texas**

SWITCHMAN
SWITCHMAN 1647-17-11-H

/Pioneer/54

Post Job Summary **Cement Surface Casing**

Date Prepared: 03/04/2014
Version: 1

Service Supervisor: CARPENTER, LANCE

Submitted by: MCKAY, ADAM

HALLIBURTON

HALLIBURTON

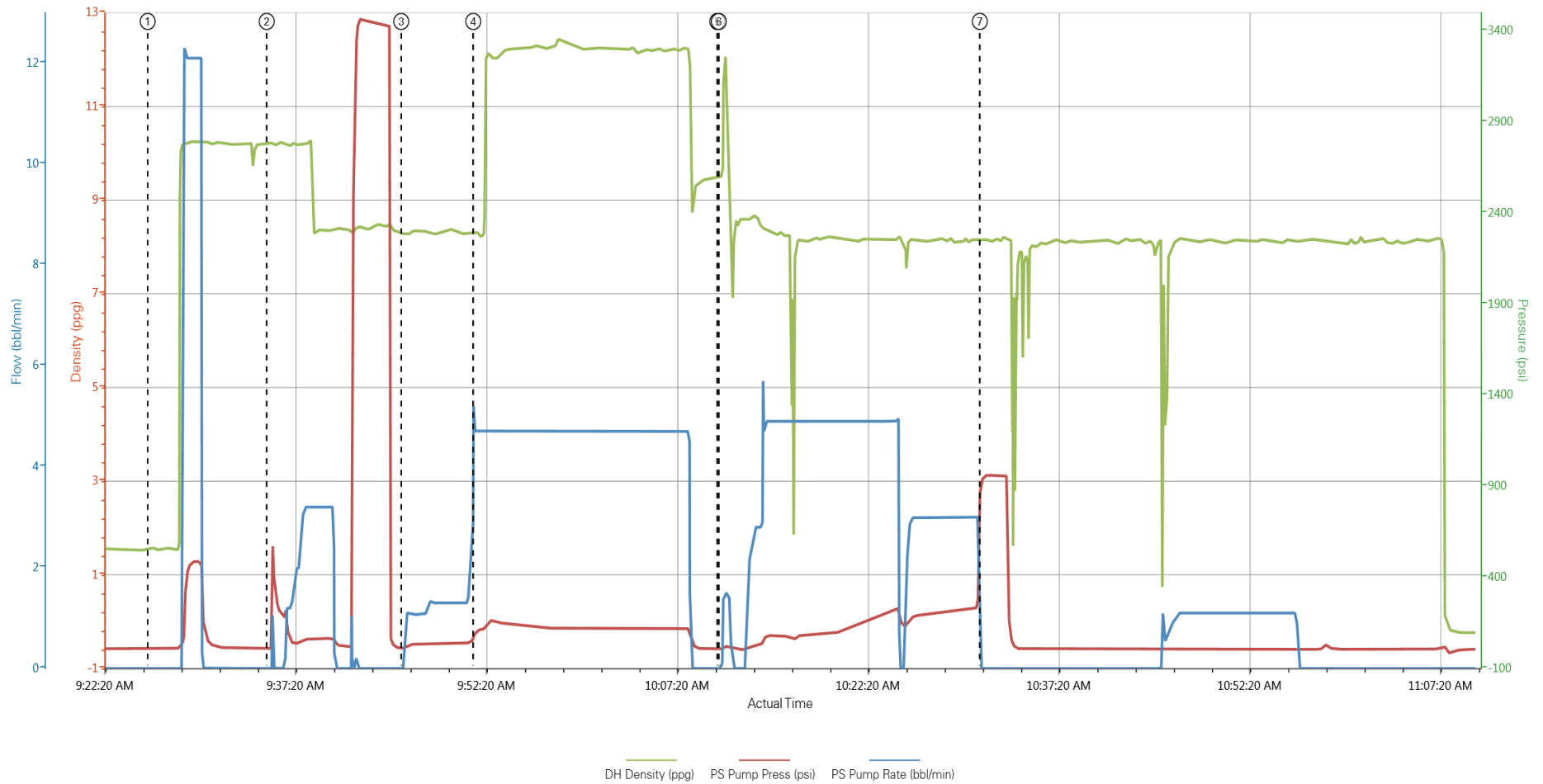
Wellbore Geometry

Job Tubulars					MD		TVD		Excess	Shoe Joint Length
Type	Description	Size in	ID in	Wt lbm/ft	Top ft	Bottom ft	Top ft	Bottom ft	%	ft
Casing	9 5/8" Surface Casing	9.63	8.921	36.00	0.00	950.00				0.00
Casing	16" Conductor Casing	16.00	15.376	55.00	0.00	60.00				
Open Hole Section	12.25" Open Hole Section		12.250		60.00	950.00				

Pumping Schedule

Stage /Plug #	Fluid #	Fluid Type	Fluid Name	Surface Density lbm/gal	Avg Rate bbl/min	Surface Volume	Downhole Volume
1	1	Spacer	WATER SPACER	8.33	4	20	20
1	2	Cement Slurry	SWIFTCEM B1	12.50	4	190 sks	190 sks

ANADARKO SURFACE SWITCHMAN 1647-17-11-H



① Start Job 1.55;9,0 ④ Pump Lead Cement 8.31;101;4.7 ⑦ Bump Plug 8.12;943;0
 ② Test Lines 10.25;9,0 ⑤ Pump Displacement 9.51;7,0
 ③ Pump Spacer 1 8.28;11,0 ⑥ Pump Displacement 9.49;7,0

HALLIBURTON

Service Supervisor Reports

HALLIBURTON

Cementing Job Log

The Road to Excellence Starts with Safety

Sold To #: 300466	Ship To #: UNKNOWN	Quote #:	Sales Order #: 901022334
Customer: ANADARKO PETROLEUM CORP - EBUS		Customer Rep: Nielson, Stewert	
Well Name: SWITCHMAN	Well #: 1647-17-11-H	API/UWI #:	
Field:	City (SAP): UNKNOWN	County/Parish: Cheyenne	State: Colorado
Legal Description:			
Lat: N 0 deg. OR N 0 deg. 0 min. 0 secs.		Long: E 0 deg. OR E 0 deg. 0 min. 0 secs.	
Contractor:		Rig/Platform Name/Num: Pioneer 54	
Job Purpose: Cement Surface Casing		Ticket Amount:	
Well Type: Exploratory / Wildcat		Job Type: Cement Surface Casing	
Sales Person: GREGORY, JON		Srv Supervisor: CARPENTER, LANCE MBU ID Emp #: 461737	

Activity Description	Date/Time	Cht #	Rate bbl/min	Volume bbl		Pressure psig		Comments
				Stage	Total	Tubing	Casing	
Shutdown	12/26/0199 10:09							SHUTDOWN
Call Out	01/06/2014 18:00							CREW CALLED OUT
Comment	01/06/2014 20:00							COULDN'T GET A BULK DRIVER UNTIL ABOUT 2200 TO DRIVE BULK TRUCK
Pre-Convoy Safety Meeting	01/06/2014 22:45							CREW HAS JOURNEY MANAGEMENT SAFETY MEETING
Depart from Service Center or Other Site	01/06/2014 23:00							CREW DEPARTS FOR LOCATION
Arrive At Loc	01/07/2014 03:00							CREW ARRIVES AT LOCATION. CASING CREW IS ON LOCATION SPOTTING EQUIPMENT AND RIGGING UP.
Assessment Of Location Safety Meeting	01/07/2014 03:15							CREW ASSESSES LOCATION FOR HAZARDS AND EQUIPMENT LAYOUT
Casing on Bottom	01/07/2014 07:30							CASING ON BOTTOM. CASING CREW BEGINS RIGGING DOWN
Pre-Rig Up Safety Meeting	01/07/2014 07:35							CREW HAS PRE RIG UP SAFETY MEETING
Rig-Up Equipment	01/07/2014 07:45							CREW BEGINS RIGGING UP EQUIPMENT AND LINES
Activity Description	Date/Time	Cht	Rate bbl/min	Volume bbl		Pressure psig		Comments

Sales Order #: 901022334

HALLIBURTON

Cementing Job Log

		#	Stage	Total	Tubing	Casing	
Rig-Up Completed	01/07/2014 09:00						CREW IS RIGGED UP AND READY TO BEGIN. CASING CREW DEPARTS FROM LOCATION
Pre-Job Safety Meeting	01/07/2014 09:10						CREW, RIG CREW AND COMPANY REP HAVE PRE JOB SAFETY MEETING
Pump Spacer	01/07/2014 09:30	2	10	10		60.0	FILL LINES WITH FRESH WATER
Pressure Test	01/07/2014 09:40						PRESSURE TEST LINES TO 3500 PSI
Pump Spacer	01/07/2014 09:43	4	10	20		120.0	PUMP MORE FRESH WATER SPACER
Pump Cement	01/07/2014 09:51	4	73	93		80.0	PUMP 190 SKS SWIFCEM 12.5# 2.18 YIELD 12.41 GAL
Drop Top Plug	01/07/2014 10:10						DROP TOP PLUG PROVIDED BY COMPANY REP ON LOCATION
Pump Displacement	01/07/2014 10:11	4	70	163		250.0	PUMP FRESH WATER DISPLACEMENT
Bump Plug	01/07/2014 10:31						BUMP PLUG. FINAL CIRCULATING PSI 250. TOOK 500 OVER
Check Floats	01/07/2014 10:34						CHECK FLOATS. GOT 1/2 BBL BACK. RIG CHECKED STACK AND GOT 1/4 BBL CEMENT TO SURFACE.
Pre-Rig Down Safety Meeting	01/07/2014 10:40						CREW HAS PRE RIG DOWN SAFETY MEETING
Rig-Down Equipment	01/07/2014 10:45						CREW BEGINS RIGGING DOWN EQUIPMENT
Rig-Down Completed	01/07/2014 11:45						CREW IS RIGGED DOWN
Pre-Convoy Safety Meeting	01/07/2014 11:50						CREW HAS JOURNEY MANAGEMENT SAFETY MEETING
Depart Location for Service Center or Other Site	01/07/2014 12:00						CREW DEPARTS FROM LOCATION

Sales Order #: 901022334

SWITCHMAN 1647-17-11-H

HALLIBURTON

The Road to Excellence Starts with Safety

Sold To #: 300466		Ship To #: 3205502		Quote #:		Sales Order #: 901022334	
Customer: ANADARKO PETROLEUM CORP - EBUS				Customer Rep: Nielson, Stewert			
Well Name: SWITCHMAN		Well #: 4-63-03-3340CH		API/UWI #: 05-017-07777			
Field: WILD CAT		City (SAP): KIT CARSON		County/Parish: Cheyenne		State: Colorado	
Lat: N 38.658 deg. OR N 38 deg. 39 min. 29.056 secs.				Long: W 102.712 deg. OR W -103 deg. 17 min. 18.535 secs.			
Job Purpose: Cement Surface Casing							
Well Type: Development Well				Job Type: Cement Surface Casing			
Sales Person: GREGORY, JON				Srvc Supervisor:		MBU ID Emp #:	
Job Personnel							
HES Emp Name	Exp Hrs	Emp #	HES Emp Name	Exp Hrs	Emp #	HES Emp Name	Exp Hrs
Bushman, Frank	9	456667	Carpenter, Lance	9	461737	Simmons, Keaton	9
Equipment							
HES Unit #	Distance-1 way	HES Unit #	Distance-1 way	HES Unit #	Distance-1 way	HES Unit #	Distance-1 way
10951248	180	11036295C	180	11501021	180		
Job Hours							
Date	On Location Hours	Operating Hours	Date	On Location Hours	Operating Hours	Date	On Location Hours
TOTAL			<i>Total is the sum of each column separately</i>				
Job				Job Times			
Formation Name					Date	Time	Time Zone
Formation Depth (MD)	Top		Bottom		Called Out	06 – Jan – 2014	18:00
Form Type	BHST				On Location	07 – Jan – 2014	03:00
Job depth MD	950. ft				Job Started	07 – Jan – 2014	09:30
Water Depth					Job Completed	07 – Jan – 2014	10:40
Perforation Depth (MD)	From		To		Departed Loc	07 – Jan – 2014	12:00
Well Data							
Description	New / Used	Max pressure psig	Size in	ID in	Weight lbm/ft	Thread	Grade
12.25" Open Hole Section				12.25			
16" Conductor Casing	Unknown		16.	15.376	55.		J-55
9 5/8" Surface Casing	Unknown		9.625	8.921	36.	LTC	J-55
Tools and Accessories							
Type	Size	Qty	Make	Depth	Type	Size	Qty
Guide Shoe		1		949.2	Packer		
Float Shoe					Bridge Plug		
Float Collar		1		906	Retainer		
Insert Float							
Stage Tool							
Miscellaneous Materials							
Gelling Agt		Conc		Surfactant		Conc	
Treatment Fld		Conc		Inhibitor		Conc	
Fluid Data							
Stage/Plug #: 1							

HALLIBURTON

Fluid #	Stage Type	Fluid Name	Qty	Qty uom	Mixing Density lbm/gal	Yield ft ³ /sk	Mix Fluid Gal/sk	Rate bbl/min	Total Mix Fluid Gal/sk
1	WATER SPACER	Water	20	bbl	8.33	-	-	4	
2	SWIFTCEM B1	SWIFTCEM (TM) SYSTEM (452990)	190	sacks	12.5	2.18	12.41	4	12.41
12.41 Gal		FRESH WATER							
Calculated Values		Pressures		Volumes					
Displacement	70	Shut In: Instant		Lost Returns		Cement Slurry		Pad	
Top Of Cement		5 Min		Cement Returns		Actual Displacement	70	Treatment	
Frac Gradient		15 Min		Spacers		Load and Breakdown		Total Job	
Rates									
Circulating		Mixing		Displacement		Avg. Job			
Cement Left In Pipe	Amount	0 ft	Reason	Shoe Joint					
Frac Ring # 1 @	ID	Frac ring # 2 @	ID	Frac Ring # 3 @	ID	Frac Ring # 4 @	ID		
The Information Stated Herein Is Correct				Customer Representative Signature					