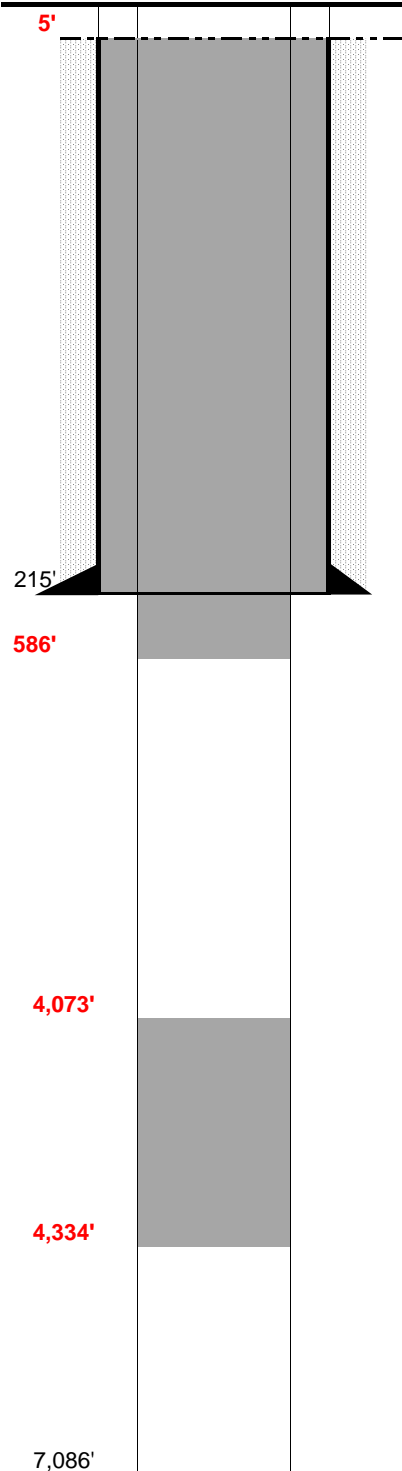


# FINAL AS-BUILD

**WELL NAME:** McCaffery # 16-36  
**OPERATOR:** Aexco Inc  
**COMP ZONE:** J Sand  
**LOCATION:** 9N 59W S36 SE SE

**COUNTY:** Weld  
**STATE:** Colorado  
**API :** 05-123-13992  
**GL/KB:** 4859' / 4869'

**SPUD:** 6/24/88  
**COMP:** 6/30/88  
**ABDN:** 6/30/88  
**COGCC:** 6/30/88



## SURFACE CASING

DEPTH: 215' SIZE: 8.625' GRADE: \_\_\_\_\_ WT (#/ft): 23.0  
CEMENT: 160 sx  
COMMENTS: \_\_\_\_\_

## PRODUCTION CASING

DEPTH: \_\_\_\_\_ SIZE: \_\_\_\_\_ GRADE: \_\_\_\_\_ WT (#/ft): \_\_\_\_\_  
CEMENT: \_\_\_\_\_ TOC: \_\_\_\_\_  
COMMENTS: \_\_\_\_\_

PERFS: \_\_\_\_\_ - \_\_\_\_\_ PROD ZONE 1: \_\_\_\_\_  
PERFS: \_\_\_\_\_ - \_\_\_\_\_ ZONE 2: \_\_\_\_\_  
PERFS: \_\_\_\_\_ - \_\_\_\_\_ ZONE 3: \_\_\_\_\_

## PREVIOUS PLUGS

RECOVERED: \_\_\_\_\_ SIZE: \_\_\_\_\_  
CMT 1: 140' - 215' COMMENT: 25 sx - btm of surf csg,  
CMT 2: 0' - 30' COMMENT: 10 sx - top of surf csg.  
CMT 3: \_\_\_\_\_ - \_\_\_\_\_ COMMENT: \_\_\_\_\_  
OTHER: Plug 1: 4,334' - 4,073' (100 sx)  
Plug 2: 586' - 480' (50 sx)  
Plug 3: 480' - Surface (300 sx)  
\_\_\_\_\_  
\_\_\_\_\_  
\_\_\_\_\_

## FORMATIONS:

NIOBRARA: 5,118'  
FORT HAYS 6,061'  
CODELL 6,112'  
BENTONITE 6,461'  
D SAND 6,566'  
J SAND 6,654'