



Scale: 5" / 100'
Measured Depth Log

Well Name Merritt 6-66-9-0659CDH HZ

Location NWNE SEC 9, T6N, R66W

State COLORADO

Country USA

API Number 05-123-37711-00

Region DJ BASIN

Spud Date 9/1/2013

Surface Coordinates 260' FNL x 2125' FEL

Bottom Hole Coordinates 550' FNL x 1890' FEL

County WELD

Rig Number NABORS M22

AFE # 18463D

Field EATON

Drilling Completed 9/23/2013

Ground Elevation 4822'

K.B. Elevation 4844'

Logged Interval 6750' To 11885'

Total Depth 11885'

Formation CODELL

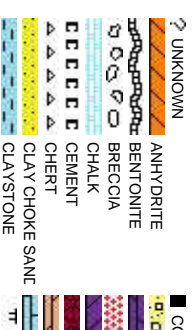
Type of Drilling Fluid LSND - WATER POLY MUD

Company BILL BARRETT

Name John Roesink

Company Bill Barrett Corp

Address 1099 18th Street
Denver, CO 80202



Operator

CORP.

Geologist

it, Suite 2300
202

Rock Types

CONGLOMERATE	METAMORPHIC	SHALY SILTSTONE
DOLomite	NO SAMPLE	SILTY SHALE
GRANITE	SALT	SILTSTONE
GYPSUM	SANDSTONE	TUFF
IGNEOUS	SALT-PEPPER SANT	WELDED TUFF
SIDERITE or LIMONITE	SHALE	
LIMESTONE	SHALE COLORED	
MARLSTONE	SHALE GRAY	
	SHALY SANDSTONE	

Accessories

Fossils	F FOSSIL	ARGILLACEOUS	GLAUCONITE	TUFFACEOUS
GASTROPOD	ARGILLITE GRAIN	GYPSIFEROUS		
ALGAE	OOLITE	B BENTONITE	HEAVY MINERAL	
AMPHIPORA	OSTRACOD	BITUMENOUS SUBSTANCE	INOCERAMUS	ANHYDRITE STRINGER
BELEMITE	PELECYPOD	BRECCIA FRAGMENTS	KAOLIN	BENTONITE STRINGER
BIOCLASTIC	PELLET	CALCAREOUS	MARLSTONE	COAL STRINGER
BRACHIOPOD	PISOLITE	CARBONACEOUS FLAKES	MINERAL CRYSTALS	DOLomite STRINGER
BRYOZOA	PLANT REMAINS	CHTDK	NODULES	GYPSUM STRINGER
CEPHALOPOD	PLANT SPORES	CHTLT	PHOSPHATE PELLET:	LIMESTONE STRINGER
CORAL	SCAPHOPOD	COAL - THIN BEDS	PYRITE	MARLSTONE (CALC) STRG
CRINOID	STROMATOPOROID	DOLOMITIC	SALT CAST	MARLSTONE (DOL) STRG
ECHINOID		FELDSPAR	SANDY	SANDSTONE STRINGER
FISH	Minerals	FERRUGINOUS PELLET	SILICEOUS	SHALE STRINGER
FORAMINIFERA	ANHYDRITIC	FERRUGINOUS	SILTY	SILTSTONE STRINGER

Other Symbols

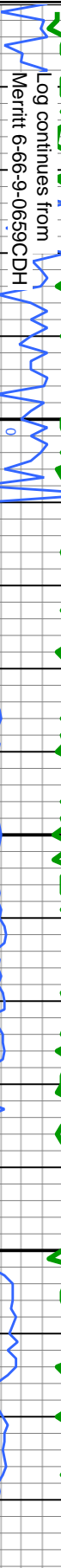
Oil Show	MOLDIC	FAULT	WIRELINE TESTED - LEFT	E EARTHY
DEAD	ORGANIC	FORMATION TOP	WIRELINE TESTED - RT	FX FINELYXLN
EVEN	PINPOINT	GAS SHOW		ES GRAINSTONE
QUESTIONABLE	VUGGY	MINDEPTH MN DEPTH	Rounding	L LITHOGRAPHIC
SPOTTED STAINING			ANGULAR	MX MICROXLN
Engineering			ROUNDED	MS MUDSTONE
BIT			SUBANG	PS PACKSTONE
CONNECTION (LEFT)			REVERSE FAULT	WS WACKSTONE
CONNECTION (RIGHT)			SIDEWALL CORE (LEFT)	
FENESTRAL			SIDEWALL CORE (RIGHT)	
FRACTURE			SLIDE	
INTERCRYSTALLINE			SURVEY	BS BOUNDSTONE
INTEROOLITIC			TRIP GAS	C CHALKY
				CX CRYPTOXLN
				M MODERATE
				P POOR
				W WELL

Slide/Rotate

Wt: 10.15 VIS: 48 IN

Columbine Logging2-Manned
GeosteeringOperational
09/12/2013Bloodhound# 311

ROP
ROF
GAMMA



Total Gas & Chromatograph

GAS
C1
C2
C3
C4
CO2

Depth Labels

% Lith



Well Bore
TVD

MD: 6,762' TVD: 6,749.83' Inclination: 0.5 ° Azimuth: 18.5 ° VS: 248.39'	MD: 6,792' TVD: 6,779.83' Inclination: 0.4 ° Azimuth: 343.7 ° VS: 248.61'	MD: 6,824' TVD: 6,811.82' Inclination: 2 ° Azimuth: 178.7 ° VS: 248.16'	MD: 6,856' TVD: 6,843.74' Inclination: 5.9 ° Azimuth: 184.9 ° VS: 245.96'	MD: 6,888' TVD: 6,875.47' Inclination: 9 ° Azimuth: 195.6 ° VS: 241.91'	MD: 6,920' TVD: 6,906.94' Inclination: 11.9 ° Azimuth: 203.3 ° VS: 236.47'
--	---	---	---	---	--

SL.TYSH: m gy-m gy brn, mod fri-sl britt, sb
biky-sb pty, gt-rthy, silty, grdg - SH, SLST: lt
gy-dk gy, firm-hd, sb biky - pty, gt-rthy, occ
sd, non calc, qtz gr, occ cmt, arg, grdg to sh,
fnt yel bl flor res, v fnt tan vis light ring

SL.TYSH: m gy-m gy brn, mod fri-sl britt, sb
biky-sb pty, gt-rthy, silty, grdg - SH, SLST: lt
gy-dk gy, firm-hd, sb biky - pty, gt-rthy, occ
sd, non calc, qtz gr, occ cmt, arg, grdg to sh,
fnt ss, fnt yel bl flor res, v fnt tan vis light ring

SL.TYSH: m gy-m gy brn, mod fri-sl britt, sb
biky-sb pty, gt-rthy, silty, grdg - SH, SLST: lt
gy-dk gy, firm-hd, sb biky - pty, gt-rthy, occ
sd, non calc, qtz gr, occ cmt, arg, grdg to sh,
fnt yel bl flor res, v fnt tan vis light ring

SL.TYSH: m gy-m gy brn, mod fri-sl
biky-sb pty, gt-rthy, silty, grdg - SH
flor res, v fnt tan vis light ring

Oil Show

TR
P
FR
G
E

Images



Wt: 10.05 VIS: 49 IN

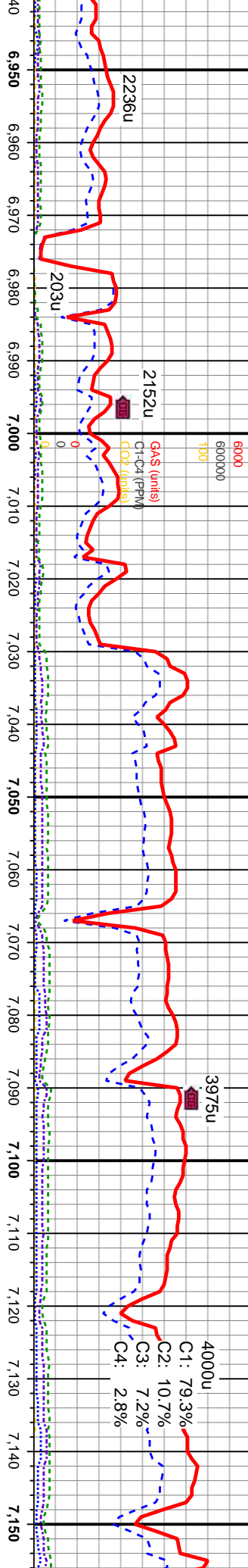
Wt: 10.05 VIS: 46 IN

Wt: 10.00 VIS: 48 IN

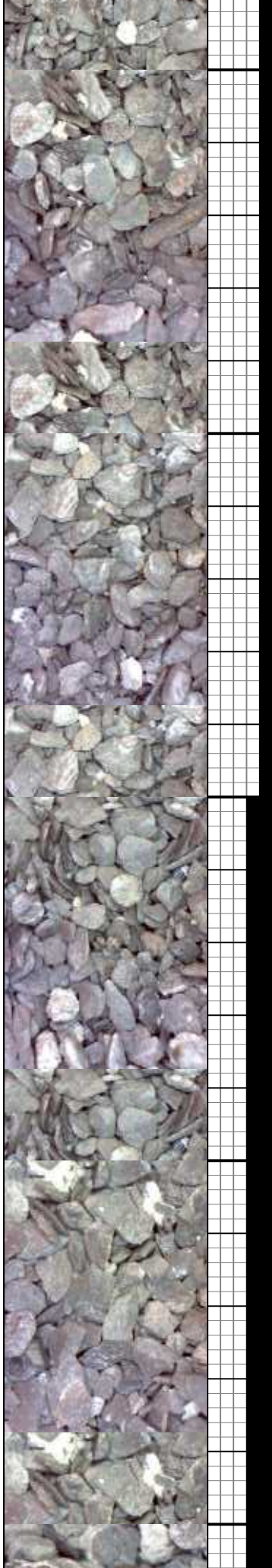
Wt: 10.10 VIS: 41 IN

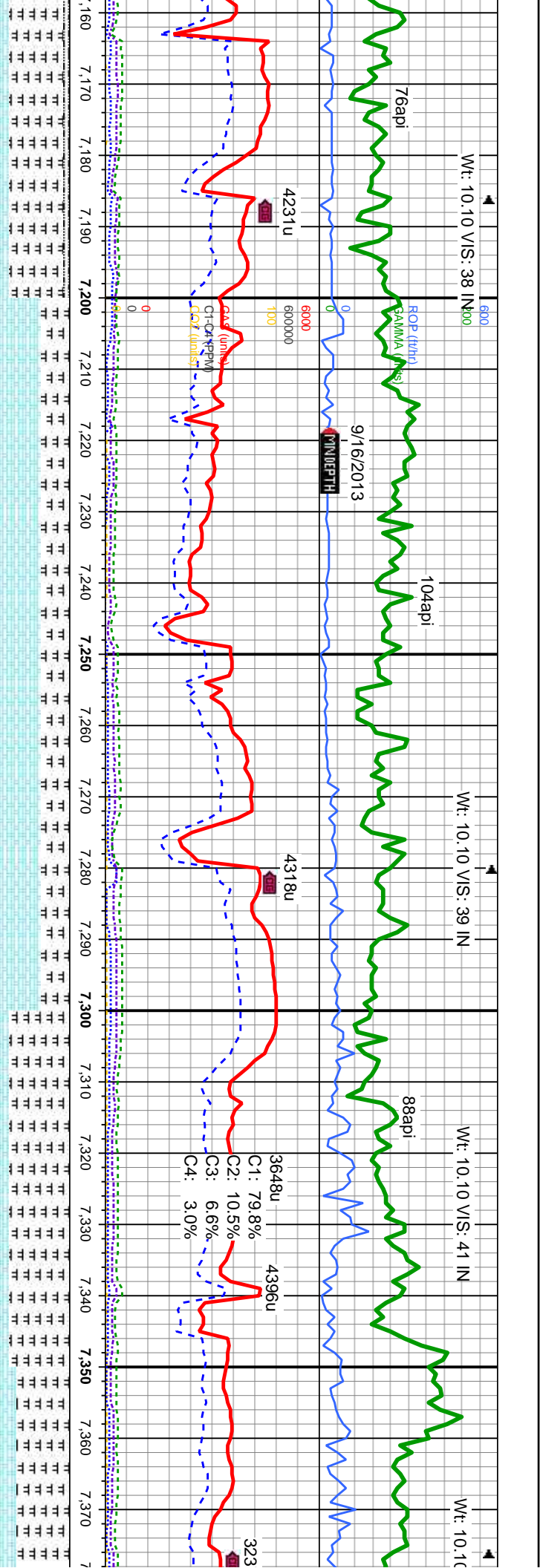
9/15/2013

MINDEPTH



MD: 6.952 TVD: 6.938.06 Inclination: 14.9 ° Azimuth: 202.6 ° VS: 229.64 '	MD: 6.983 TVD: 6.967.76 Inclination: 18.4 ° Azimuth: 202.5 ° VS: 221.44 '	MD: 7.015 TVD: 6.997.93 Inclination: 20.5 ° Azimuth: 198.2 ° VS: 211.45 '	MD: 7.047 TVD: 7.027.55 Inclination: 23.9 ° Azimuth: 194.8 ° VS: 199.85 '	MD: 7.079 TVD: 7.056.27 Inclination: 28.4 ° Azimuth: 191.5 ° VS: 186.12 '	MD: 7.110 TVD: 7.082.98 Inclination: 32.6 ° Azimuth: 189.9 ° VS: 170.66 '	MD: 7.142 TVD: 7.109.44 Inclination: 35.8 ° Azimuth: 188.5 ° VS: 152.91 '
britt, sb blky-sb pty, gt-rthy, silty, grdg - SH, frt yel bl flor res, v frnt tan vis light ring	SLTYSH: m gy-m gy brn, mod fri-sl britt, sb blky-sb pty, gt-rthy, silty, grdg - SH, frt yel bl flor res, v frnt tan vis light ring	SLTYSH: m gy-m gy brn, mod fri-sl britt, sb blky-sb pty, gt-rthy, silty, grdg - SH, frt yel bl flor res, v frnt tan vis light ring	SLTY SH: lt gy to dk gy, sme stri, sb blkv - sb pty, sft - mod firm, silty rthy tex, scat bent, dissm pyr, abnt bent; CHK: lt-med gy, sme brn-red, lam, mot, vsft-sft, sbply-blky, MARL: lt-dk gy, stri, sft-v sft, sbply-pty, fri- brit, sil, v f grn, rr v f dism pyr; v bri bl mod fast mky-stmg cut, sl od, frnt yel bl flor res, v frnt tan vis light ring			

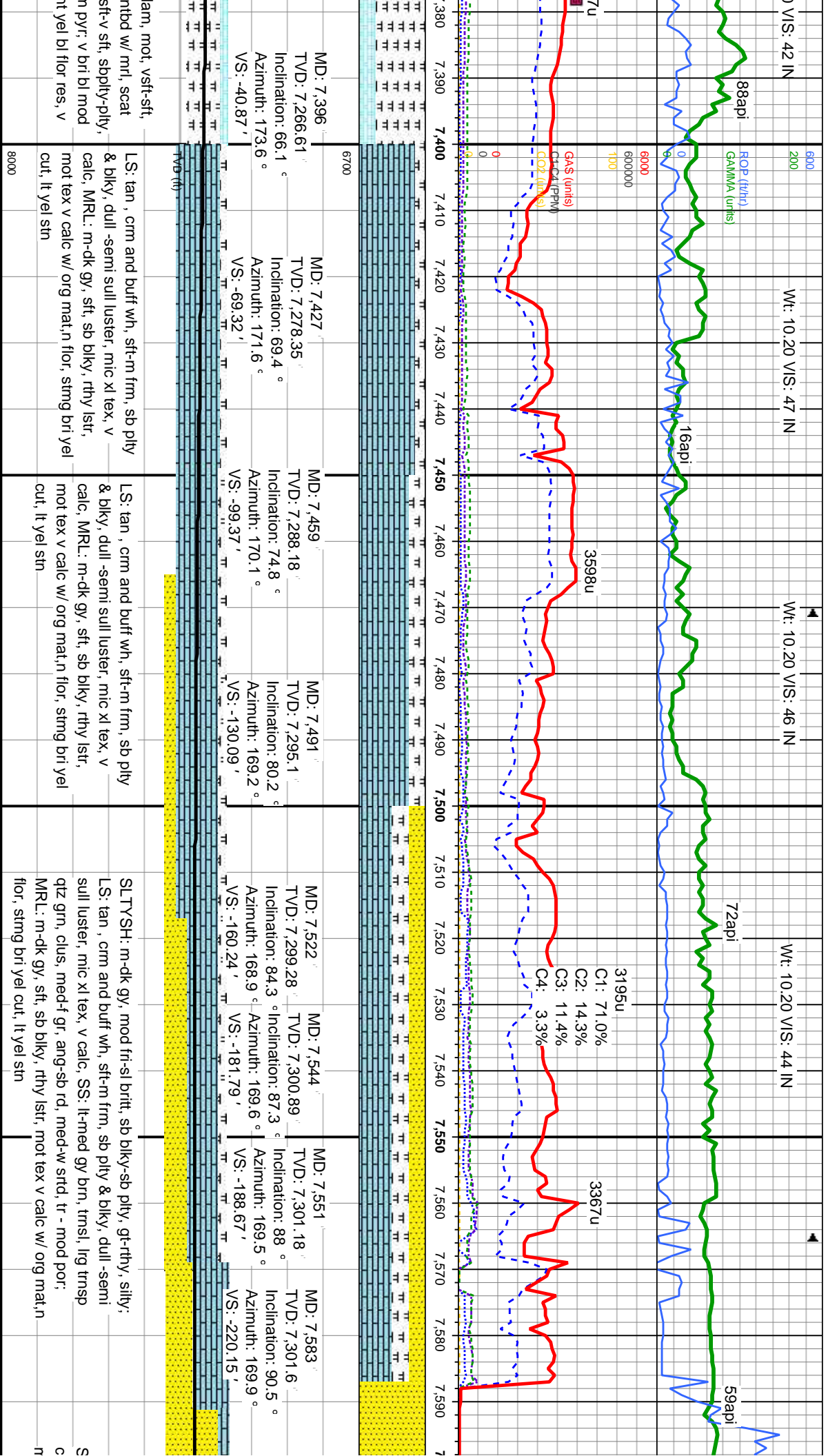


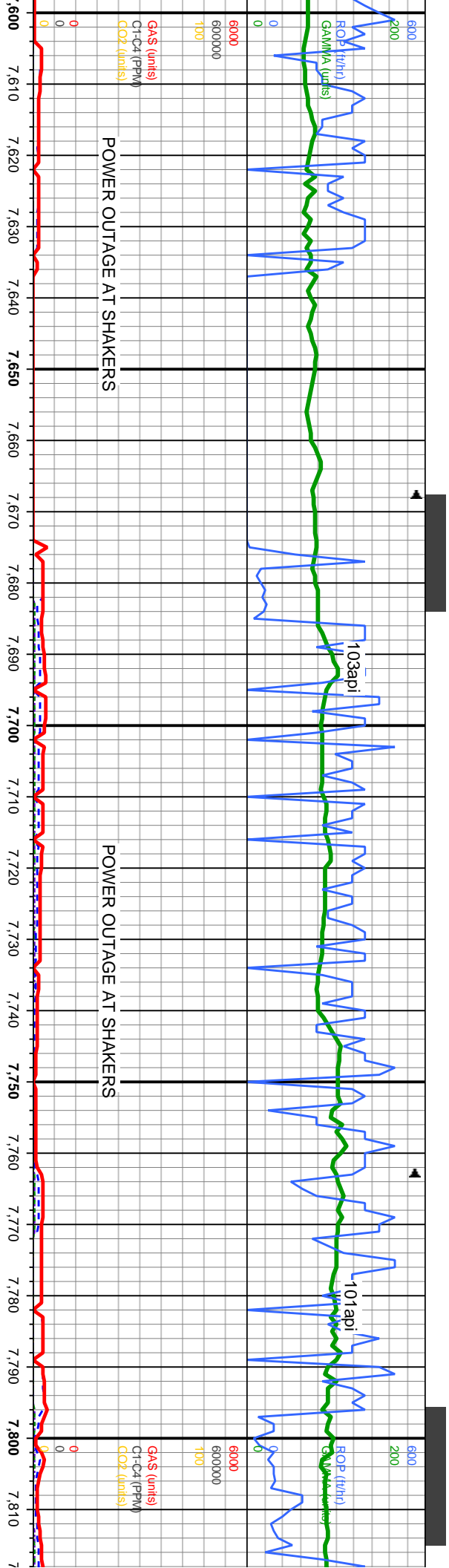


MD: 7,174 TVD: 7,135 Inclination: 38.2 ° Azimuth: 189.4 ° VS: 133.89	MD: 7,205 TVD: 7,158.76 Inclination: 41.7 ° Azimuth: 189.7 ° VS: 114.26	MD: 7,236 TVD: 7,181.07 Inclination: 46.2 ° Azimuth: 188.1 ° VS: 93.01	MD: 7,269 TVD: 7,202.67 Inclination: 52 ° Azimuth: 185.7 ° VS: 68.26	MD: 7,301 TVD: 7,221.2 Inclination: 57.2 ° Azimuth: 183.7 ° VS: 42.27	MD: 7,333 TVD: 7,238.09 Inclination: 59.1 ° Azimuth: 183.5 ° VS: 15.15	MD: 7,364 TVD: 7,253 Inclination: 63.4 ° Azimuth: 178.8 ° VS: -12.01
--	---	--	--	---	--	--

lt-med gy, sme brn, lam, mot, vsft-sft, sbply-biky, v calc, crptxl, intbd w/ mrl, scat MARL: lt-dk gy, stri, sft-v sft, sbply-plty, fri- brit, sil, vf gm, rr vf dism pyr, v fast mky-stmg cut, sl od, fnt yel fnt tan vis light ring	CHK: lt-med gy, sme brn, lam, mot, vsft-sft, sbply-biky, v calc, crptxl, intbd w/ mrl, scat bent: MARL: lt-dk gy, stri, sft-v sft, sbply-plty, fri- brit, sil, vf gm, rr vf dism pyr, v fast mky-stmg cut, sl od, fnt yel bl flor res, v fnt tan vis light ring	CHK: lt-med gy, sme brn, lam, mot, vsft-sft, sbply-biky, v calc, crptxl, intbd w/ mrl, scat bent: MARL: lt-dk gy, stri, sft-v sft, sbply-plty, fri- brit, sil, vf gm, rr vf dism pyr, v fast mky-stmg cut, sl od, fnt yel bl flor res, v fnt tan vis light ring	CHK: lt-med gy, sme brn, lam, mot, vsft-sft, sbply-biky, v calc, crptxl, intbd w/ mrl, scat bent: MARL: lt-dk gy, stri, sft-v sft, sbply-plty, fri- brit, sil, vf gm, rr vf dism pyr, v fast mky-stmg cut, sl od, fnt yel bl flor res, v fnt tan vis light ring	CHK: lt-med gy, sme brn, lam, mot, vsft-sft, sbply-biky, v calc, crptxl, intbd w/ mrl, scat bent: MARL: lt-dk gy, stri, sft-v sft, sbply-plty, fri- brit, sil, vf gm, rr vf dism pyr, v fast mky-stmg cut, sl od, fnt yel bl flor res, v fnt tan vis light ring	CHK: lt-med gy, sme brn, lam, mot, vsft-sft, sbply-biky, v calc, crptxl, intbd w/ mrl, scat bent: MARL: lt-dk gy, stri, sft-v sft, sbply-plty, fri- brit, sil, vf gm, rr vf dism pyr, v fast mky-stmg cut, sl od, fnt yel bl flor res, v fnt tan vis light ring
---	---	---	---	---	---





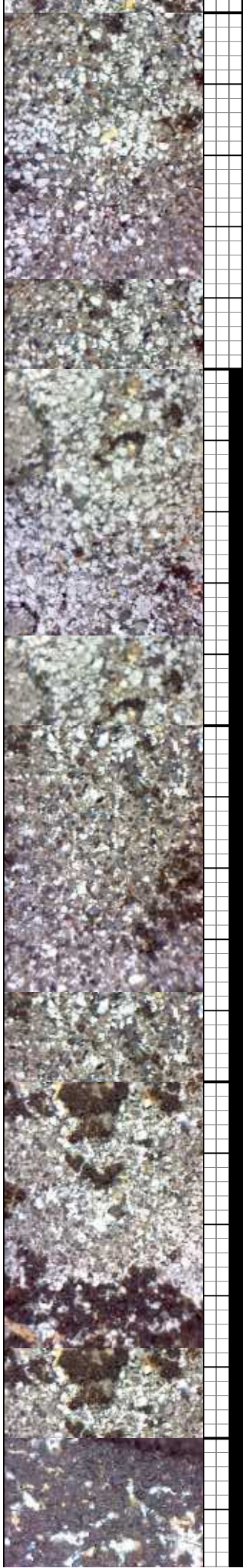


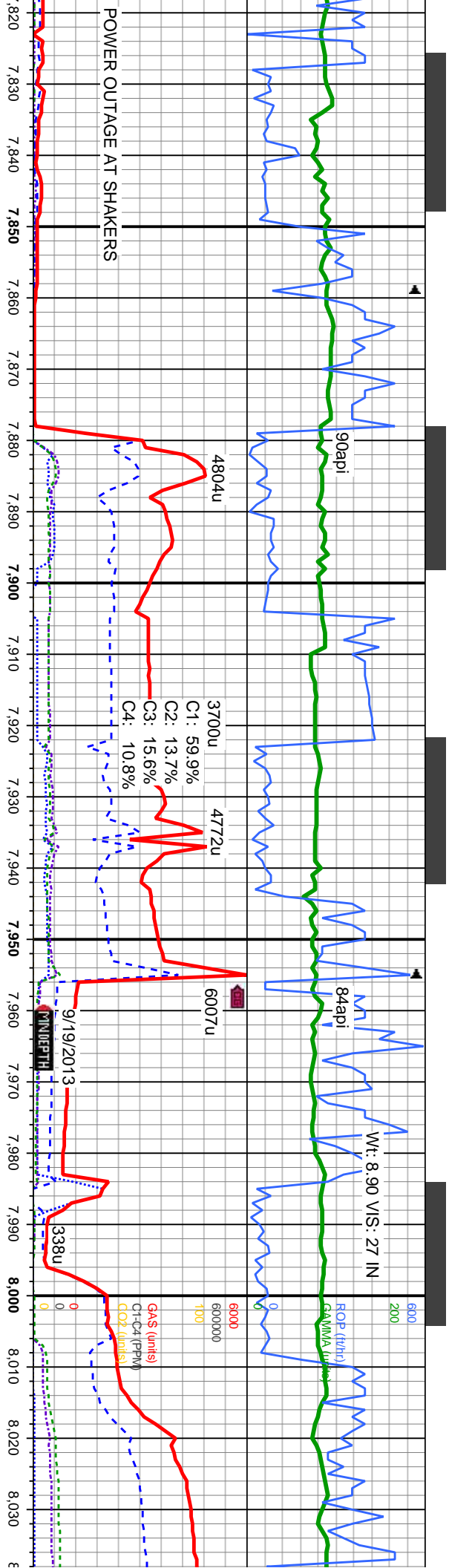
MD: 7,615 '
TVD: 7,301.32 '
Inclination: 90.5 °
Azimuth: 170.1 °
VS: -251.66 '

MD: 7,710 '
TVD: 7,300.74 '
Inclination: 90.2 °
Azimuth: 171.4 °
VS: -345.42 '

MD: 7,805 '
TVD: 7,300.66 '
Inclination: 89.9 °
Azimuth: 171.7 °
VS: -439.39 '

TVD: (ft)		TVD: (ft)	
SS: lt-med gy brn, trns, lrg trns qtz grn, clus, med-f gr, ang-sb rd, med-w strd, tr - mod por, g sting cut, mod brn stn.		SS: lt-med gy brn, trns, lrg trns qtz grn, clus, med-f gr, ang-sb rd, med-w strd, tr - mod por, g sting cut, mod brn stn.	
SS: lt-med gy brn, trns, lrg trns qtz grn, clus, med-f gr, ang-sb rd, med-w strd, tr - mod por, g sting cut, mod brn stn.		SS: lt-med gy brn, trns, lrg trns qtz grn, clus, med-f gr, ang-sb rd, med-w strd, tr - mod por, g sting cut, mod brn stn.	
SS: lt-med gy brn, trns, lrg trns qtz grn, clus, med-f gr, ang-sb rd, med-w strd, tr - mod por, g sting cut, mod brn stn.		SS: lt-med gy brn, trns, lrg trns qtz grn, clus, med-f gr, ang-sb rd, med-w strd, tr - mod por, g sting cut, mod brn stn.	





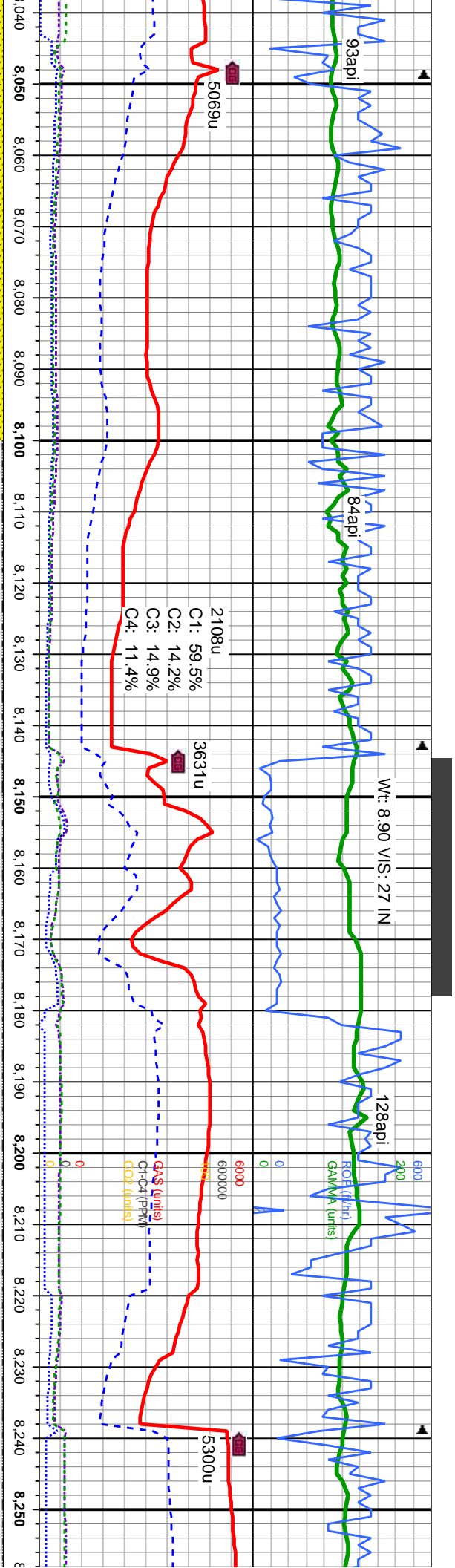
POWER OUTAGE AT SHAKERS

MD: 7,899 '
TVD: 7,300.9 '
Inclination: 89.8 °
Azimuth: 175.5 °
VS: -532.79 '

MD: 7,995 '
TVD: 7,300.15 '
Inclination: 91.1 °
Azimuth: 177.1 °
VS: -628.58 '

Interval	Description
7,820 - 7,880	n, trnsf, lrg trnsf qtz grn, ang-sb rd, med-w srtf, tr - cut, mod brn stn.
7,880 - 7,900	SS: lt-med gy brn, trnsf, lrg trnsf qtz grn, clus, med-f gr, ang-sb rd, med-w srtf, tr - mod por, g string cut, mod brn stn.
7,900 - 7,920	SS: lt-med gy brn, trnsf, lrg trnsf qtz grn, clus, med-f gr, ang-sb rd, med-w srtf, tr - mod por, g string cut, mod brn stn.
7,920 - 7,950	SS: lt-med gy brn, trnsf, lrg trnsf qtz grn, clus, med-f gr, ang-sb rd, med-w srtf, tr - mod por, g string cut, mod brn stn.
7,950 - 7,990	SS: lt-med gy brn, trnsf, lrg trnsf qtz grn, clus, med-f gr, ang-sb rd, med-w srtf, tr - mod por, g string cut, mod brn stn.
7,990 - 8,030	SS: lt-med gy brn, trnsf, lrg trnsf qtz grn, clus, med-f gr, ang-sb rd, med-w srtf, tr - mod por, g string cut, mod brn stn.





MD: 8,090 '
TVD: 7,297.91 '
Inclination: 91.6 °
Azimuth: 177.2 °
VS: -723.44 '

MD: 8,185 '
TVD: 7,296.75 '
Inclination: 89.8 °
Azimuth: 179.4 °
VS: -818.38 '

SS: lt-med gy brn, trns, lrg trns qtz grn, clus, med-f gr, ang-sb rd, med-w strd, tr - mod por, SLTY SH: med-dk gy sft-frn, sb ply-sb blk, rthy & v aren tex, occ lam, g stng cut, mod brn stn.

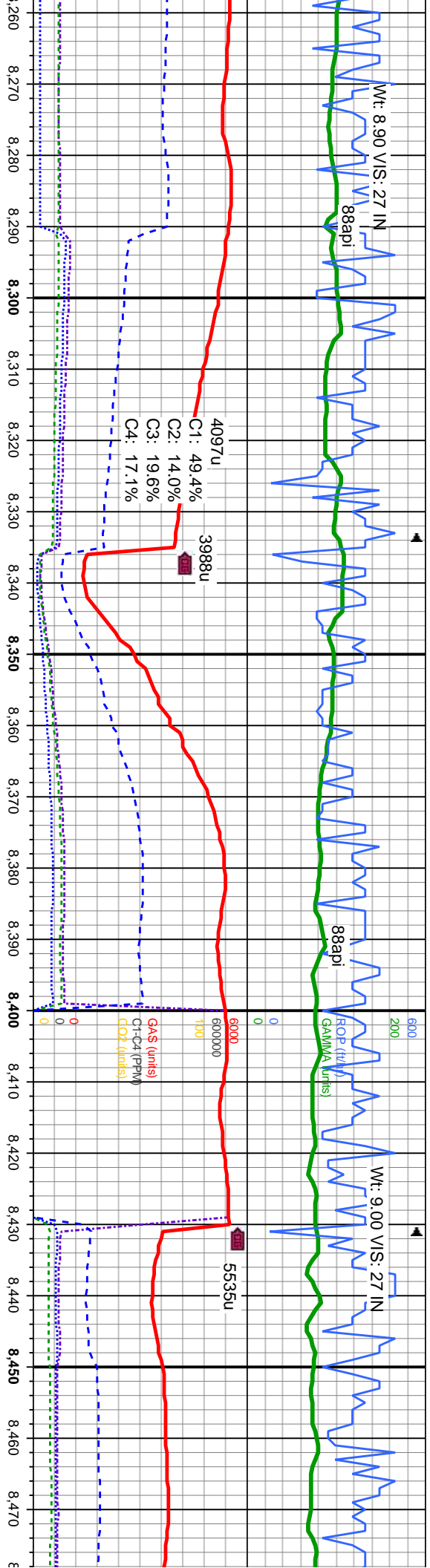
SS: lt-med gy brn, trns, lrg trns qtz grn, clus, med-f gr, ang-sb rd, med-w strd, tr - mod por, SLTY SH: med-dk gy sft-frn, sb ply-sb blk, rthy & v aren tex, occ lam, g stng cut, mod brn stn.

SS: lt-med gy brn, trns, lrg trns qtz grn, clus, med-f gr, ang-sb rd, med-w strd, tr - mod por, SLTY SH: med-dk gy sft-frn, sb ply-sb blk, rthy & v aren tex, occ lam, g stng cut, mod brn stn.

SS: lt-med gy brn, trns, lrg trns qtz grn, clus, med-f gr, ang-sb rd, med-w strd, tr - mod por, SLTY SH: med-dk gy sft-frn, sb ply-sb blk, rthy & v aren tex, occ lam, g stng cut, mod brn stn.

SS: lt-med gy brn, trns, lrg trns qtz grn, clus, med-f gr, ang-sb rd, med-w strd, tr - mod por, SLTY SH: med-dk gy sft-frn, sb ply-sb blk, rthy & v aren tex, occ lam, g stng cut, mod brn stn.





MD: 8,281 '
TVD: 7,296.33 '
Inclination: 90.7 °
Azimuth: 180.1 °
VS: -914.37 '

med gy brn, trns, lrg trns qtz grn,
cl, ang-sb rd, med-w strd, tr -
por, SLTY SH: med-dk gy sft-fm, sb
bly, rthy & v aren tex, occ lam, g
cut, mod brn stn.

SS: lt-med gy brn, trns, lrg trns qtz grn,
cl, ang-sb rd, med-w strd, tr -
mod por, SLTY SH: med-dk gy sft-fm, sb
ply-sb bly, rthy & v aren tex, occ lam, g
stng cut, mod brn stn.

MD: 8,377 '
TVD: 7,295.08 '
Inclination: 90.8 °
Azimuth: 180.2 °
VS: -1,010.36 '

SS: lt-med gy brn, trns, lrg trns qtz grn,
cl, ang-sb rd, med-w strd, tr -
mod por, SLTY SH: med-dk gy sft-fm, sb
ply-sb bly, rthy & v aren tex, occ lam, g
stng cut, mod brn stn.

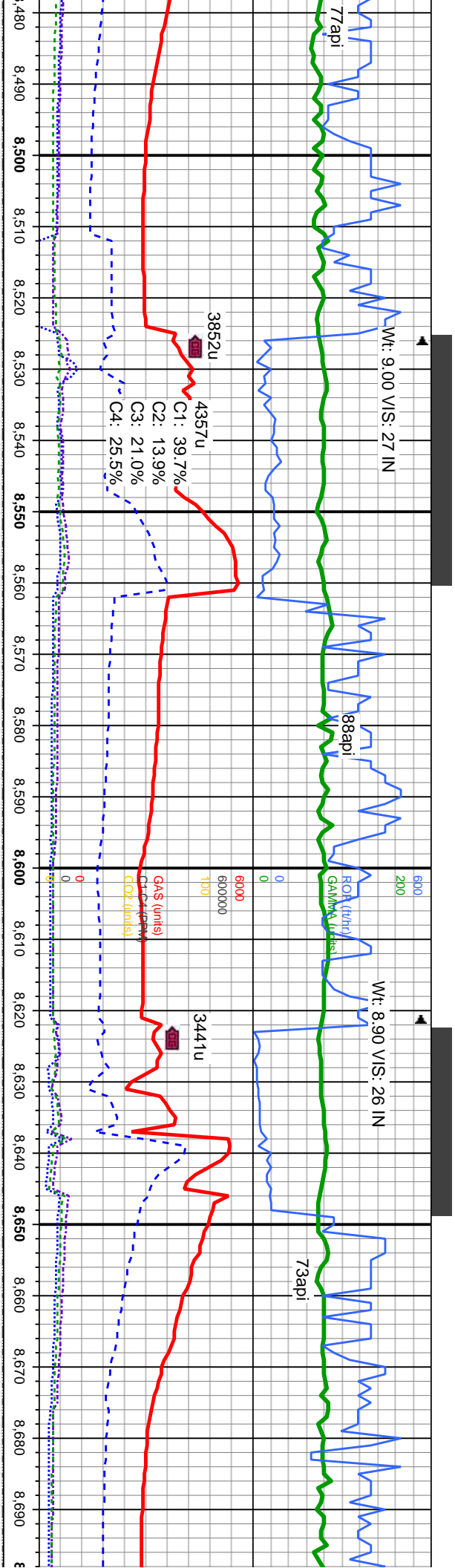
6700

MD: 8,472 '
TVD: 7,293.49 '
Inclination: 91. °
Azimuth: 179.4 °
VS: -1,105.35 '

SS: lt-med gy brn, trns, lrg trns qtz grn,
cl, ang-sb rd, med-w strd, tr -
mod por, SLTY SH: med-dk gy sft-fm, sb
ply-sb bly, rthy & v aren tex, occ lam, g
stng cut, mod brn stn.

8000

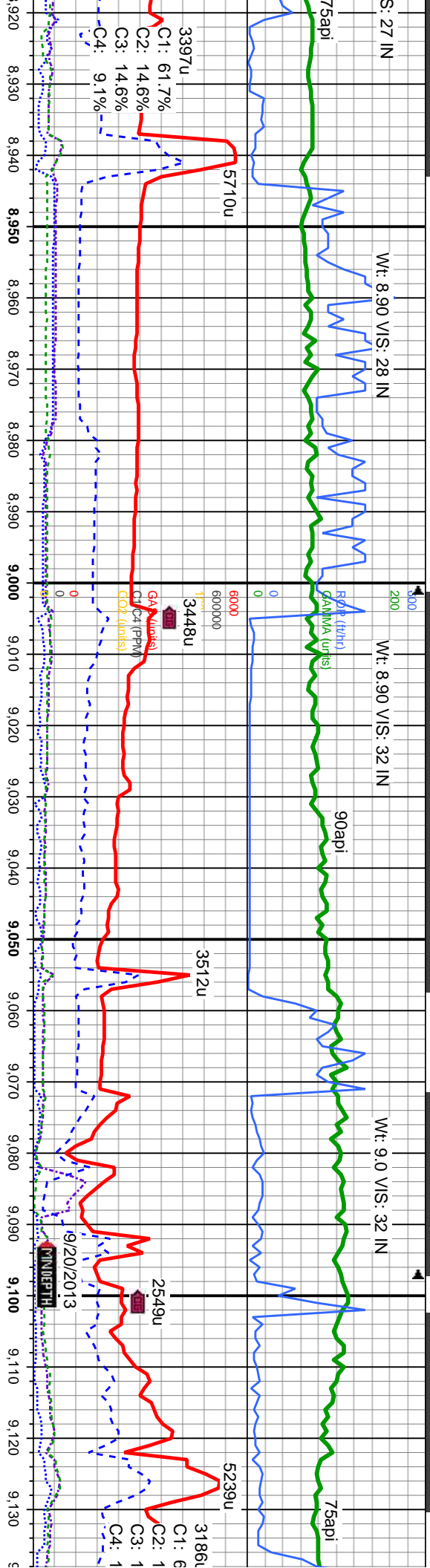




MD: 8,567' TVD: 7,292.75' Inclination: 89.8 ° Azimuth: 181.3 ° VS: -1,200.34'		6700	MD: 8,662' TVD: 7,292.92' Inclination: 90 ° Azimuth: 181.5 ° VS: -1,295.31'
---	--	------	---

g trnspl qtz grn, med-w strd, tr - mod por, SLTY SH: med-dk gy sft-fm, sb ply-sb blk, rthy & v aren tex, occ lam, g string cut, mod brn stn.	SS: lt-med gy brn, tmsl, lng trnspl qtz grn, clus, med-f gr, ang-sb rd, med-w strd, tr - mod por, SLTY SH: med-dk gy sft-fm, sb ply-sb blk, rthy & v aren tex, occ lam, g string cut, mod brn stn.	SS: lt-med gy brn, tmsl, lng trnspl qtz grn, clus, med-f gr, ang-sb rd, med-w strd, tr - mod por, SLTY SH: med-dk gy sft-fm, sb ply-sb blk, rthy & v aren tex, occ lam, g string cut, mod brn stn.	SS: lt-med gy brn, tmsl, lng trnspl qtz grn, clus, med-f gr, ang-sb rd, med-w strd, tr - mod por, SLTY SH: med-dk gy sft-fm, sb ply-sb blk, rthy & v aren tex, occ lam, g string cut, mod brn stn.
--	--	--	--





MD: 8,948
TVD: 7,291.17'
Inclination: 90.3 °
Azimuth: 180.7 °
VS: -1,581.25'

6700

MD: 9,044
TVD: 7,291'
Inclination: 89.9 °
Azimuth: 180.7 °
VS: -1,677.25'

MD: 9,130
TVD: 7,291'
Inclination: 89.9 °
Azimuth: 180.7 °
VS: -1,777.25'

SS: lt-med gy brn, trns, lrg trns qtz gm, ang-sb rd, med-w srd, tr - mod por; SLTY SH: med-dk gy sft-frn, sb ply-sb blk, rthy & v aren tex, occ lam, g stmg cut, mod brn stn.

SS: lt-med gy brn, trns, lrg trns qtz gm, clus, med-f gr, ang-sb rd, med-w srd, tr - mod por; SLTY SH: med-dk gy sft-frn, sb ply-sb blk, rthy & v aren tex, occ lam, g stmg cut, mod brn stn.

SS: lt-med gy brn, trns, lrg trns qtz gm, clus, med-f gr, ang-sb rd, med-w srd, tr - mod por; SLTY SH: med-dk gy sft-frn, sb ply-sb blk, rthy & v aren tex, occ lam, g stmg cut, mod brn stn.

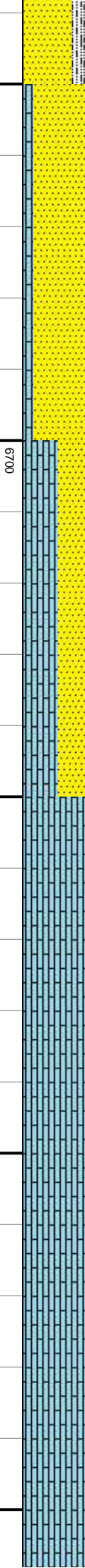
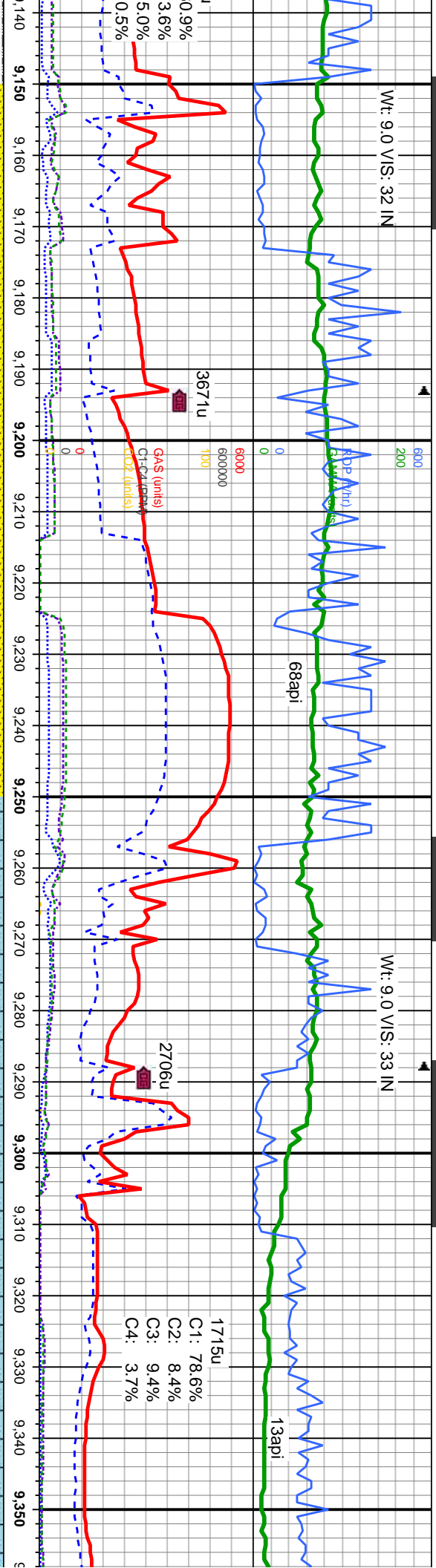
SS: lt-med gy brn, trns, lrg trns qtz gm, clus, med-f gr, ang-sb rd, med-w srd, tr - mod por; SLTY SH: med-dk gy sft-frn, sb ply-sb blk, rthy & v aren tex, occ lam, g stmg cut, mod brn stn.

SS: lt-med gy brn, trns, lrg trns qtz gm, clus, med-f gr, ang-sb rd, med-w srd, tr - mod por; SLTY SH: med-dk gy sft-frn, sb ply-sb blk, rthy & v aren tex, occ lam, g stmg cut, mod brn stn.



Wt: 9.0 V/S: 32 IN

Wt: 9.0 V/S: 33 IN



MD: 9,234
TVD: 7,283.7
Inclination: 93.5 °
Azimuth: 181.5 °
VS: -1,867.02

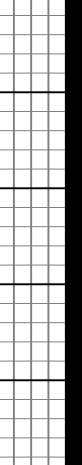
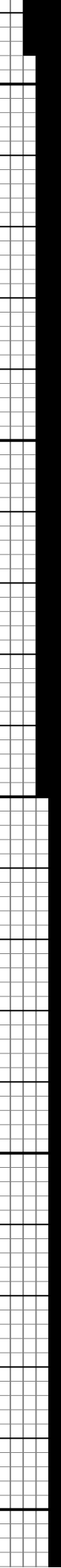
MD: 9,329
TVD: 7,280.55
Inclination: 90.3 °
Azimuth: 180.9 °
VS: -1,961.93

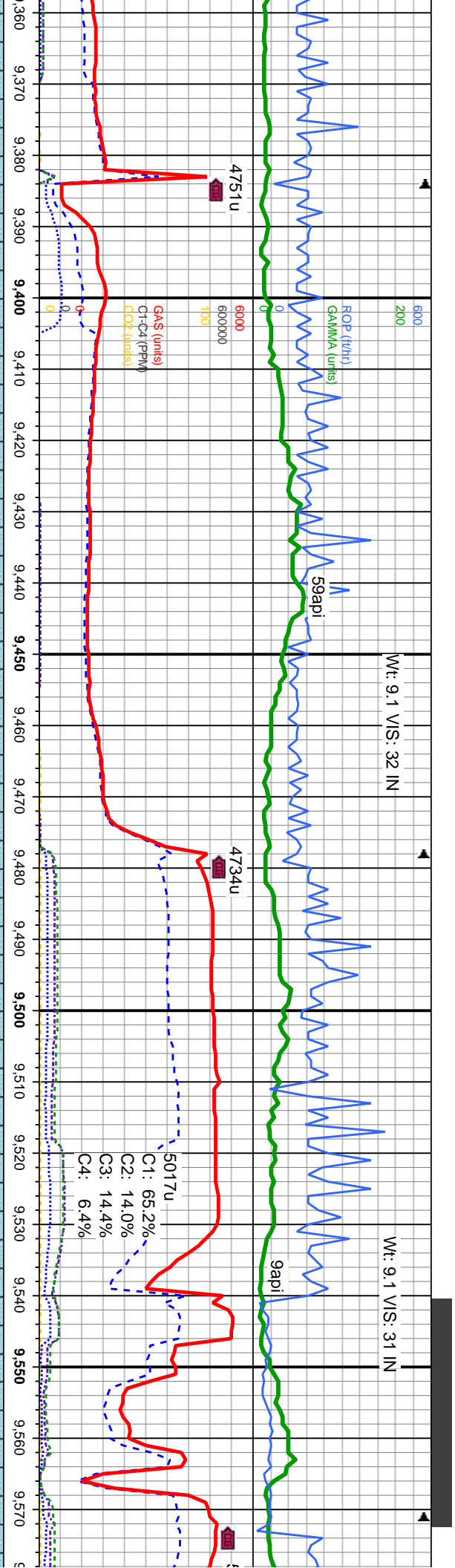
SS: lt-m gybrn, tmsl, lng transp qtz grn, clusters, m-f gr, ang-sb rd, m-w strd, n calc, tr - mod vis por; LS: wh, tan, crm, sft-m gfrn, sb ply rthy-smth lstr, mic xl-fos tex, v calc, tr sltysh, tr dism pyr, n flor, tr stmg yel cut, n sin

LS: wh, tan, crm, sft-m gfrn, sb ply rthy-smth lstr, mic xl-fos tex, v calc, tr sltysh, tr dism pyr, n flor, tr stmg yel cut, n sin

LS: wh, tan, crm, sft-m gfrn, sb ply rthy-smth lstr, mic xl-fos tex, v calc, tr sltysh, tr dism pyr, n flor, tr stmg yel cut, n sin

LS: wh, tan, crm, sft-m gfrn, sb ply rthy-smth lstr, mic xl-fos tex, v calc, tr sltysh, tr dism pyr, n flor, tr stmg yel cut, n sin

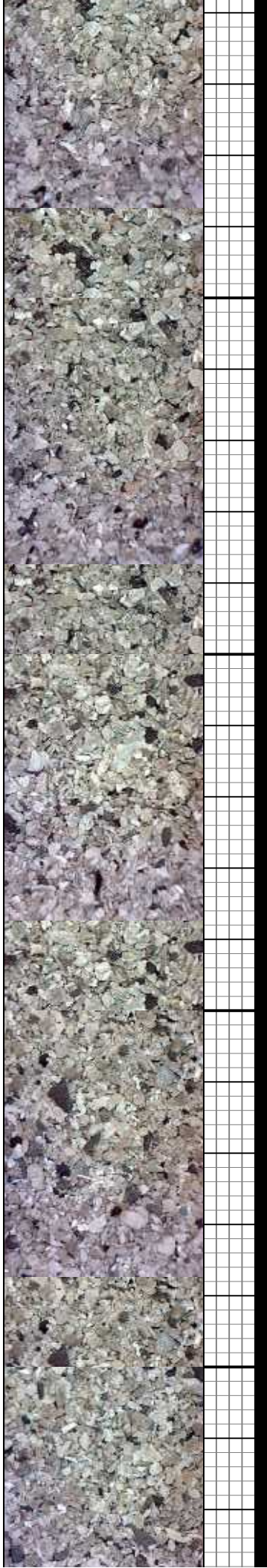


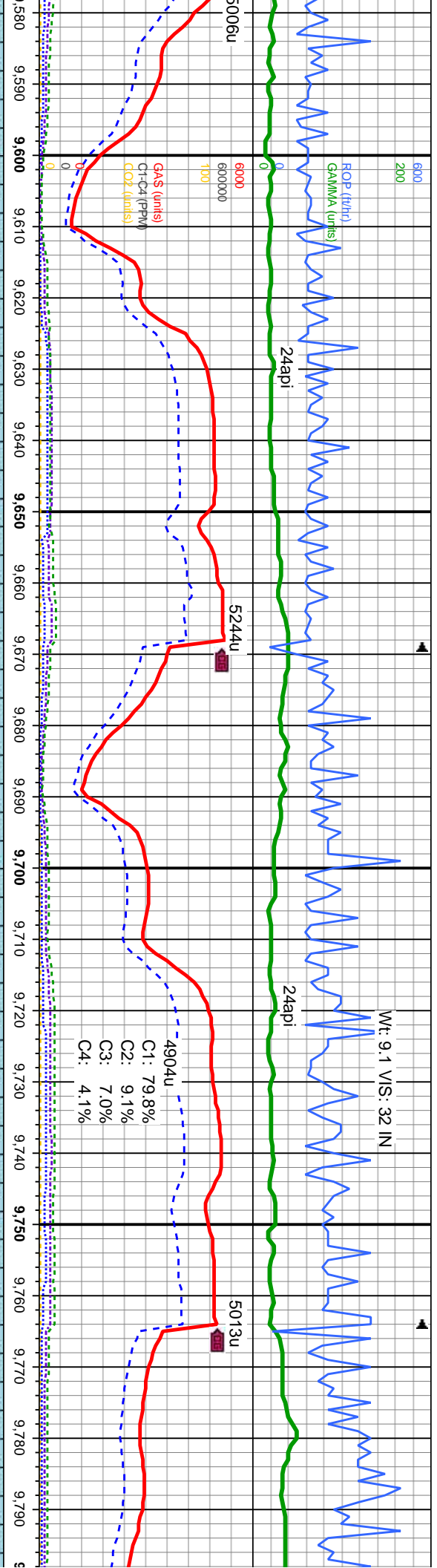


MD: 9,425'
TVD: 7,277.79'
Inclination: 93.6°
Azimuth: 181.4°
VS: -2,057.87'

MD: 9,519'
TVD: 7,272.38'
Inclination: 93.6°
Azimuth: 180.9°
VS: -2,151.69'

n, tan, crm, sft-m gfrm, sb plty		LS: wh, tan, crm, sft-m gfrm, sb plty		LS: wh, tan, crm, sft-m gfrm, sb plty		LS: wh, tan, crm, sft-m gfrm, sb plty	
rthy-smth lstr, mic xl-fos tex, v calc, tr sltysh,		rthy-smth lstr, mic xl-fos tex, v calc, tr sltysh,		rthy-smth lstr, mic xl-fos tex, v calc, tr sltysh,		rthy-smth lstr, mic xl-fos tex, v calc, tr sltysh,	
n pyr, n flor, tr stmg yel cut, n stn		tr disn pyr, n flor, tr stmg yel cut, n stn		tr disn pyr, n flor, tr stmg yel cut, n stn		tr disn pyr, n flor, tr stmg yel cut, n stn	
8000							

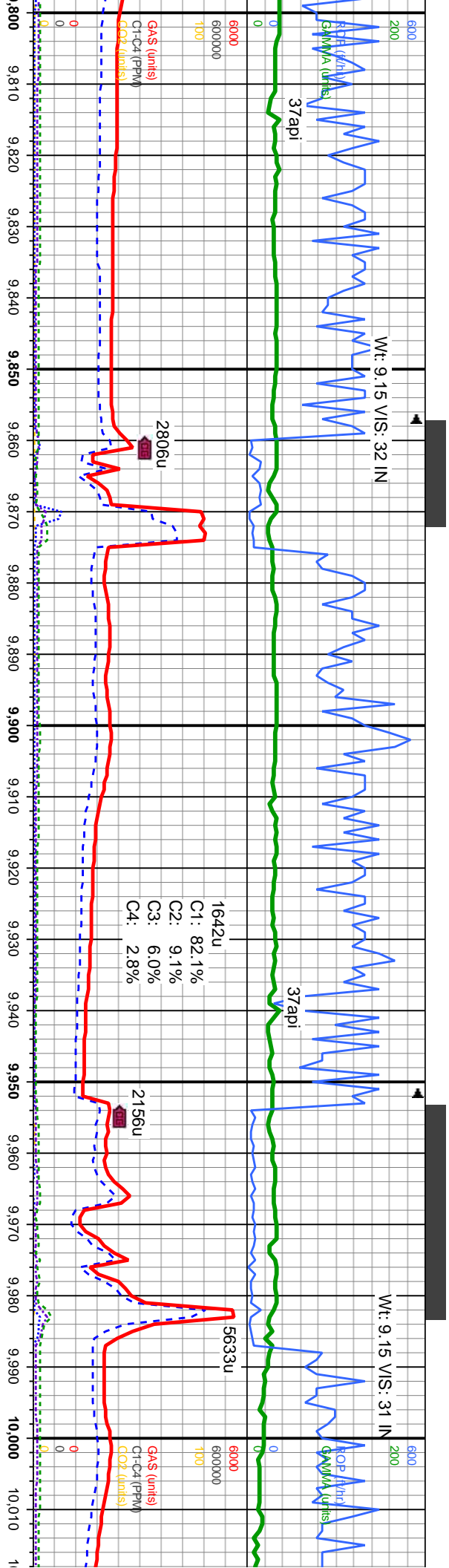




MD: 9,614 TVD: 7,269.56 Inclination: 89.8 ° Azimuth: 180.8 ° VS: -2,246.62	MD: 9,710 TVD: 7,269.47 Inclination: 90.3 ° Azimuth: 180.7 ° VS: -2,342.61	MD: TVD: In: Az: VS:
--	--	----------------------------------

LS: wh, tan, crm, sft-m gfrm, sb ply rthy-smth lstr, mic xl-fos tex, v calc, tr sltysh, tr dism pyr, n flor, tr stimg yel cut, n stn	LS: wh, tan, crm, sft-m gfrm, sb ply rthy-smth lstr, mic xl-fos tex, v calc, tr sltysh, tr dism pyr, n flor, tr stimg yel cut, n stn	LS: wh, tan, crm, sft-m gfrm, sb ply rthy-smth lstr, mic xl-fos tex, v calc, tr sltysh, tr dism pyr, n flor, tr stimg yel cut, n stn	LS: wh, tan, crm, sft-m gfrm, sb ply rthy-smth lstr, mic xl-fos tex, v calc, tr sltysh, tr dism pyr, n flor, tr stimg yel cut, n stn
--	--	--	--

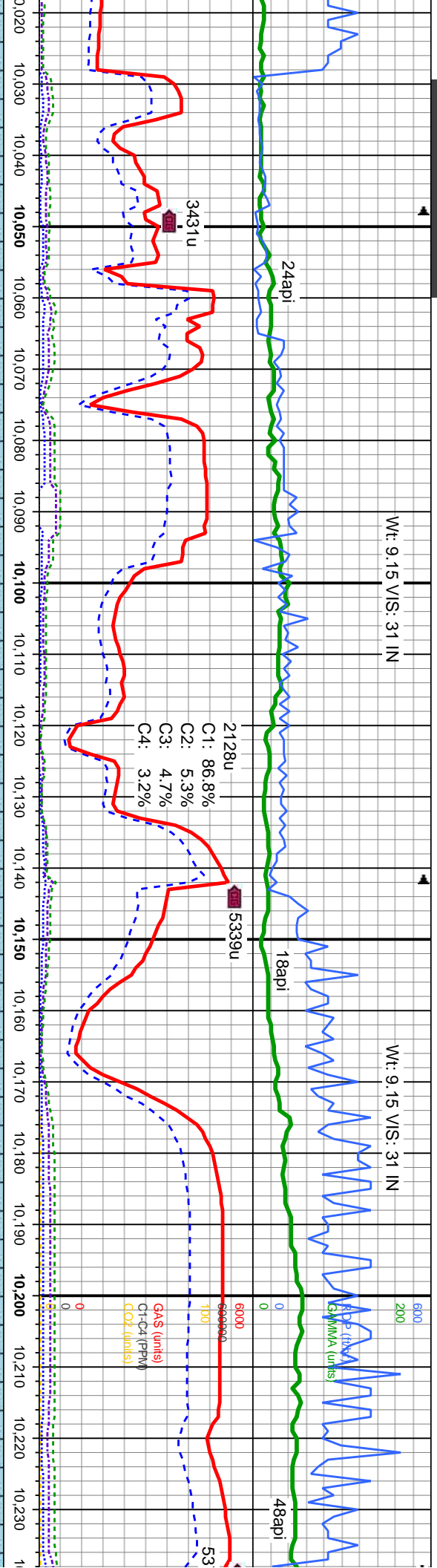




D: 9,806 ID: 7,268.32 Inclination: 91.1 ° Azimuth: 180.8 ° VS: -2,438.6'		MD: 9,900 TVD: 7,266.26 Inclination: 91.4 ° Azimuth: 180.8 ° VS: -2,532.57'		MD: 9,994 TVD: 7,264.78 Inclination: 90.4 ° Azimuth: 180.1 ° VS: -2,626.55'	
--	--	---	--	---	--

L.S: wh, tan, crm, sft-m gfrm, sb plty rthy-smth lstr, mic xl-fos tex, v calc, tr siltysh, tr dism pyr, n flor, tr stimg yel cut, n stn		L.S: wh, tan, crm, sft-m gfrm, sb plty rthy-smth lstr, mic xl-fos tex, v calc, tr siltysh, tr dism pyr, n flor, tr stimg yel cut, n stn		L.S: wh, tan, crm, sft-m gfrm, sb plty rthy-smth lstr, mic xl-fos tex, v calc, tr siltysh, tr dism pyr, n flor, tr stimg yel cut, n stn		L.S: wh, tan, crm, sft-m gfrm, sb plty rthy-smth lstr, mic xl-fos tex, v calc, tr siltysh, tr dism pyr, n flor, tr stimg yel cut, n stn	
---	--	---	--	---	--	---	--





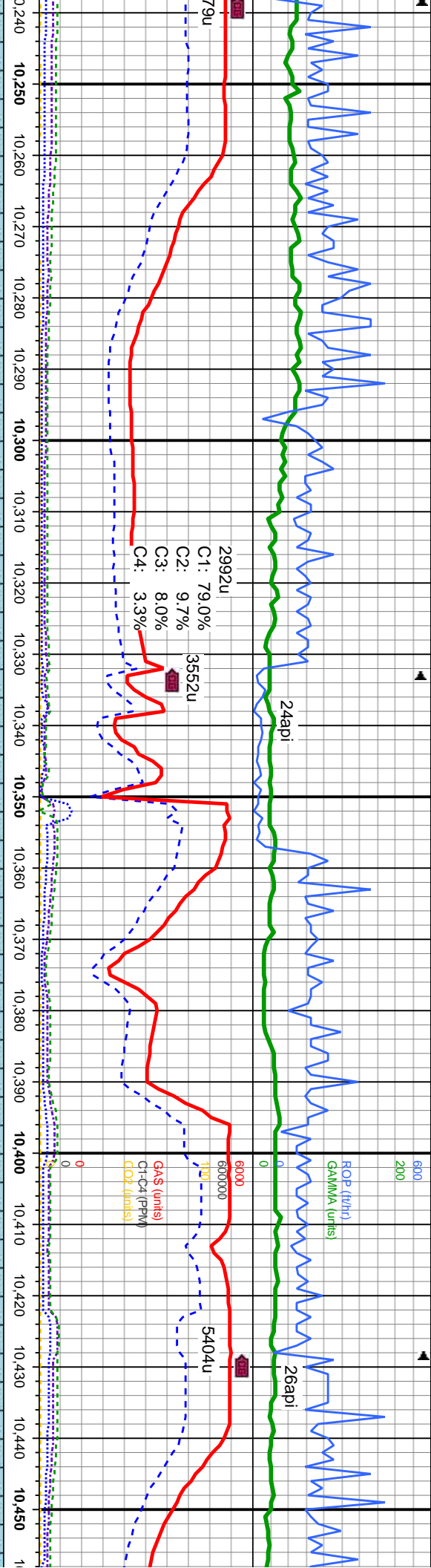
MD: 10,089
TVD: 7,266.19
Inclination: 87.9 °
Azimuth: 180.1 °
VS: -2,721.53 '

MD: 10,184
TVD: 7,269.17
Inclination: 88.5 °
Azimuth: 180.4 °
VS: -2,816.48 '

TVD (ft)

Interval	Description
10,020 - 10,050	n, sft-m gfrm, sb ply n, sft-m gfrm, sb ply
10,050 - 10,100	tr smtg yel cut, n str L.S.: wh, tan, crm, sft-m gfrm, sb ply rthy-smth lstr, mic xl-fos tex, v calc, tr siltysh, tr dism pyr, n flor, tr smtg yel cut, n str
10,100 - 10,150	L.S.: wh, tan, crm, sft-m gfrm, sb ply rthy-smth lstr, mic xl-fos tex, v calc, tr siltysh, tr dism pyr, n flor, tr smtg yel cut, n str
10,150 - 10,200	L.S.: wh, tan, crm, sft-m gfrm, sb ply rthy-smth lstr, mic xl-fos tex, v calc, tr siltysh, tr dism pyr, n flor, tr smtg yel cut, n str
10,200 - 10,230	L.S.: wh, tan, crm, sft-m gfrm, sb ply rthy-smth lstr, mic xl-fos tex, v calc, tr siltysh, tr dism pyr, n flor, tr smtg yel cut, n str

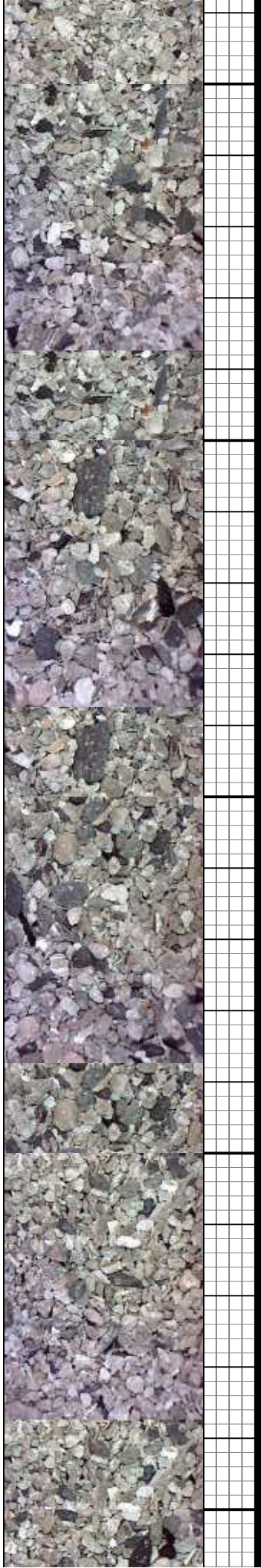


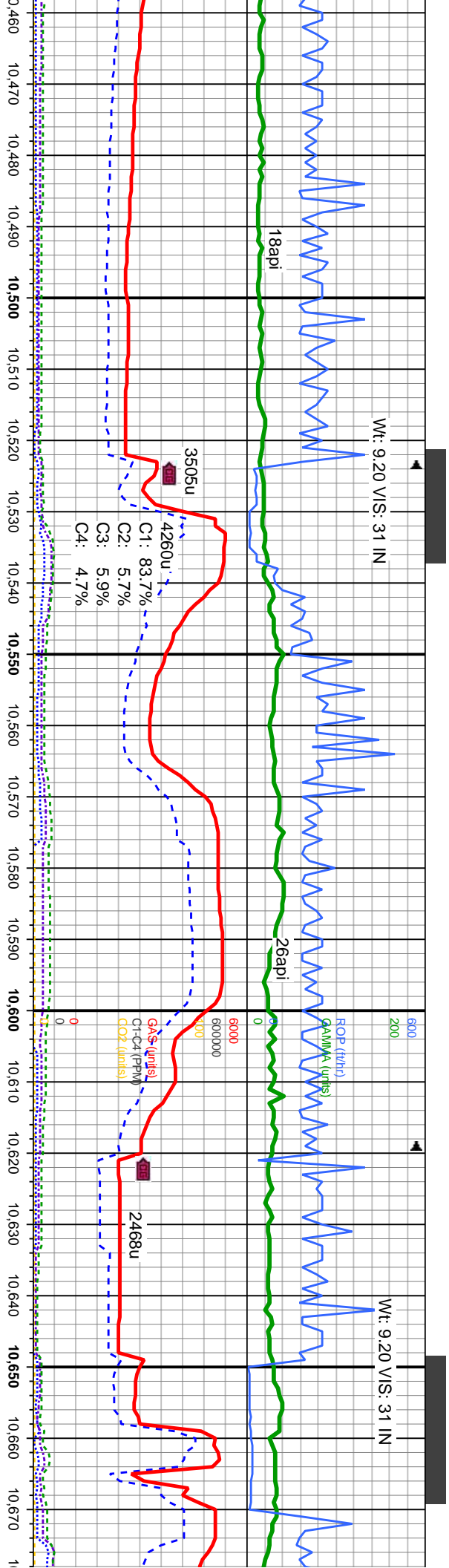


MD: 10,279
TVD: 7,270.08
Inclination: 90.4 °
Azimuth: 180.1 °
VS: -2,911.47'

MD: 10,374
TVD: 7,270.17
Inclination: 89.5 °
Azimuth: 179.9 °
VS: -3,006.47'

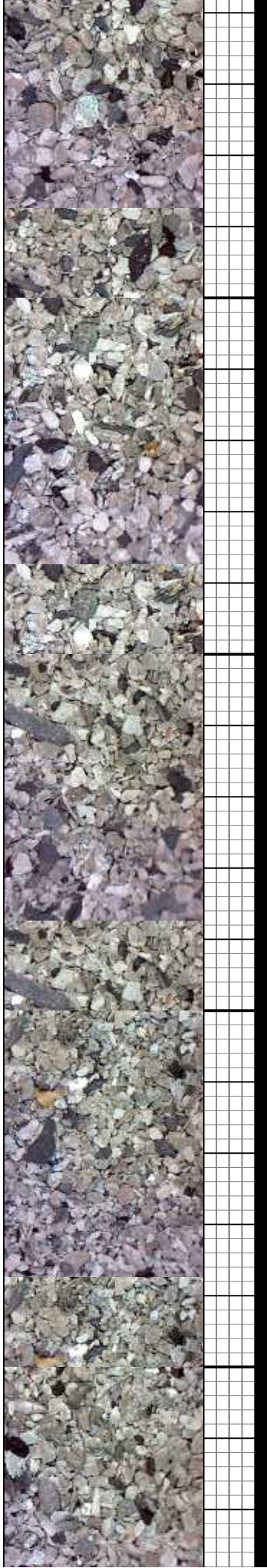
LS: wh, tan, crm, sft-m gfrm, sb pty rthy-smth lstr, mic xl-fos tex, v calc, tr siltysh, tr dism pyr, n flor, tr sting yel cut, n stn	LS: wh, tan, crm, sft-m gfrm, sb pty rthy-smth lstr, mic xl-fos tex, v calc, tr siltysh, tr dism pyr, n flor, tr sting yel cut, n stn	LS: wh, tan, crm, sft-m gfrm, sb pty rthy-smth lstr, mic xl-fos tex, v calc, tr siltysh, tr dism pyr, n flor, tr sting yel cut, n stn	LS: wh, tan, crm, sft-m gfrm, sb pty rthy-smth lstr, mic xl-fos tex, v calc, tr siltysh, tr dism pyr, n flor, tr sting yel cut, n stn
---	---	---	---

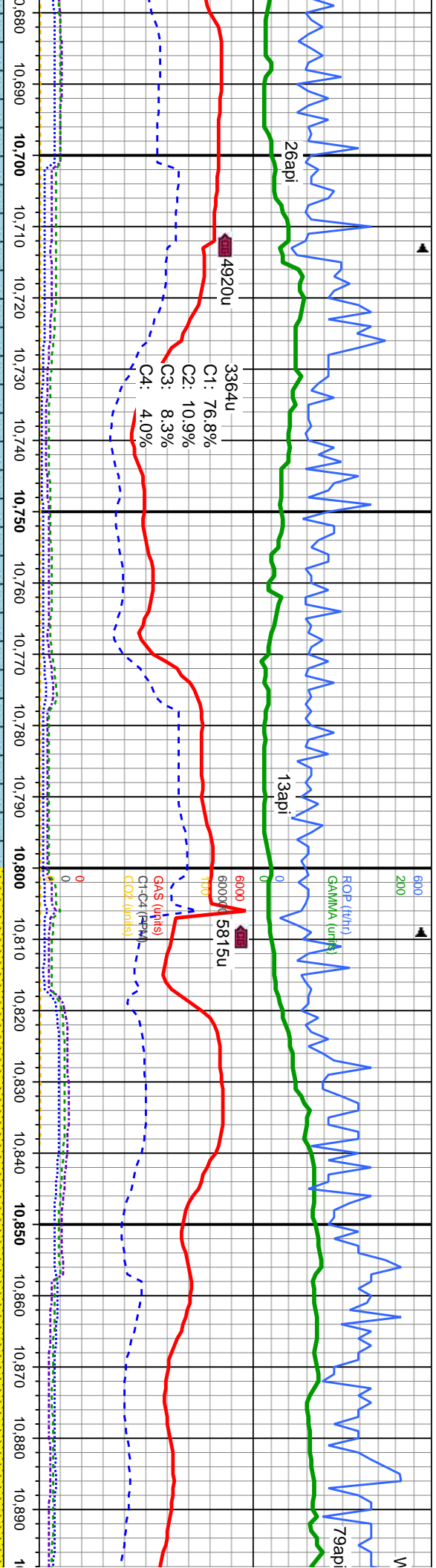




MD: 10,469 TVD: 7,269.5 Inclination: 91.3 ° Azimuth: 180 ° VS: -3,101.47 '	MD: 10,564 TVD: 7,267.02 Inclination: 91.7 ° Azimuth: 179.9 ° VS: -3,196.43 '	MD: 10,659 TVD: 7,267.02 Inclination: 88.3 ° Azimuth: 178.8 ° VS: -3,291.41 '
--	---	---

LS: wh, tan, crm, sft-m gfrm, sb plty rthy-smth lstr, mic xl-fos tex, v calc, tr siltysh, tr dism pyr, n flor, tr stimg yel cut, n str	LS: wh, tan, crm, sft-m gfrm, sb plty rthy-smth lstr, mic xl-fos tex, v calc, tr siltysh, tr dism pyr, n flor, tr stimg yel cut, n str	LS: wh, tan, crm, sft-m gfrm, sb plty rthy-smth lstr, mic xl-fos tex, v calc, tr siltysh, tr dism pyr, n flor, tr stimg yel cut, n str
--	--	--



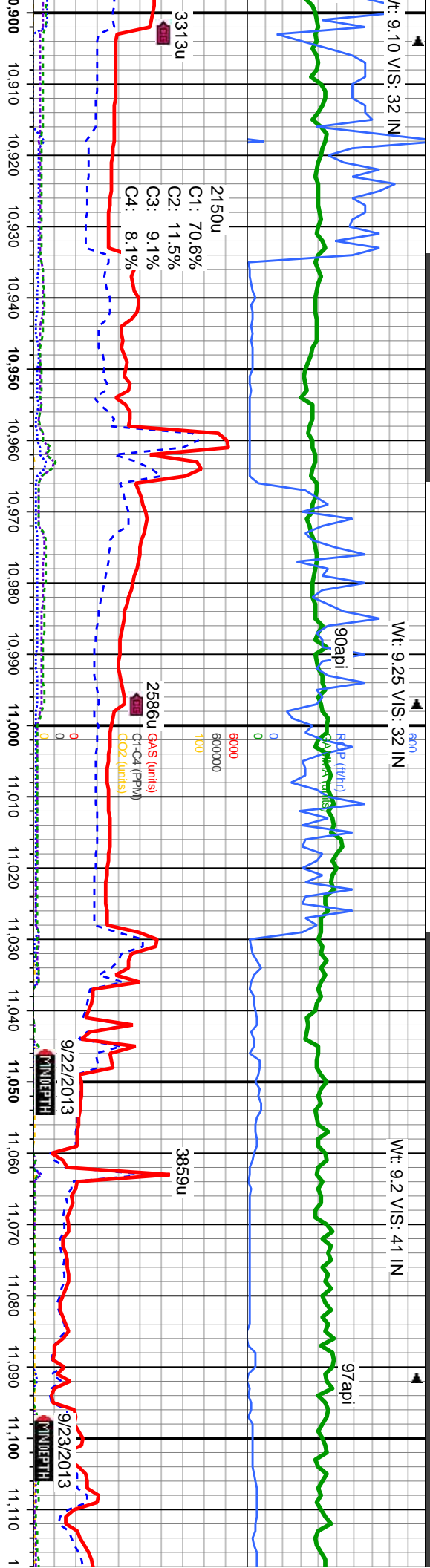


MD: 10,755
TVD: 7,270.12'
Inclination: 88 °
Azimuth: 178.6 °
VS: -3,387.34'

MD: 10,850
TVD: 7,274.02'
Inclination: 87.3 °
Azimuth: 177.9 °
VS: -3,482.21'

Interval	Description
10,680 - 10,700	sb pily ex, v calc, tr siltysh, yel cut, n stn
10,700 - 10,750	LS: wh, tan, crm, sft-m gfrm, sb pily rthy-smth lstr, mic xl-fos tex, v calc, tr siltysh, tr dism pyr, n flior, tr stmg yel cut, n stn
10,750 - 10,800	LS: wh, tan, crm, sft-m gfrm, sb pily rthy-smth lstr, mic xl-fos tex, v calc, tr siltysh, tr dism pyr, n flior, tr stmg yel cut, n stn
10,800 - 10,850	SS: lt-m gybrn, trns, lrg transp qtz grn, clusters, m-f gr, ang-sb rd, m-w strd, n calc, tr - mod vis por; LS: wh, tan, crm, sft-m gfrm, sb pily rthy-smth lstr, mic xl-fos tex, v calc, tr siltysh, tr dism pyr, n flior, tr stmg yel cut, n stn
10,850 - 10,890	SS: lt-m gybrn, trns, lrg transp qtz grn, clusters, m-f gr, ang-sb rd, m-w strd, n calc, tr - mod vis por; LS: wh, tan, crm, sft-m gfrm, sb pily rthy-smth lstr, mic xl-fos tex, v calc, tr siltysh, tr dism pyr, n flior, tr stmg yel cut, n stn





MD: 10,944'
TVD: 7,278.69'
Inclination: 87 °
Azimuth: 177.6 °
VS: -3,576.02'

MD: 11,039'
TVD: 7,283.16'
Inclination: 87.6 °
Azimuth: 177.3 °
VS: -3,670.82'

SS: lt-m gybrn, trns, lrg transp qtz grn, clusters, m-f gr, ang-sb rd, m-w strd, n calc, tr - mod vis por; LS: wh, tan, crm, sft-m gfrm, sb ply rthy-smth istr, mic xl-fos tex, v calc, tr siltysh, tr dism pyr, n flor, tr sting yel cut, n stn

SS: lt-m gybrn, trns, lrg transp qtz grn, clusters, m-f gr, ang-sb rd, m-w strd, n calc, tr - mod vis por; LS: wh, tan, crm, sft-m gfrm, sb ply rthy-smth istr, mic xl-fos tex, v calc, tr siltysh, tr dism pyr, n flor, tr sting yel cut, n stn

SS: lt-m gybrn, trns, lrg transp qtz grn, clusters, m-f gr, ang-sb rd, m-w strd, n calc, tr - mod vis por, g sting cut, mod brn stn.

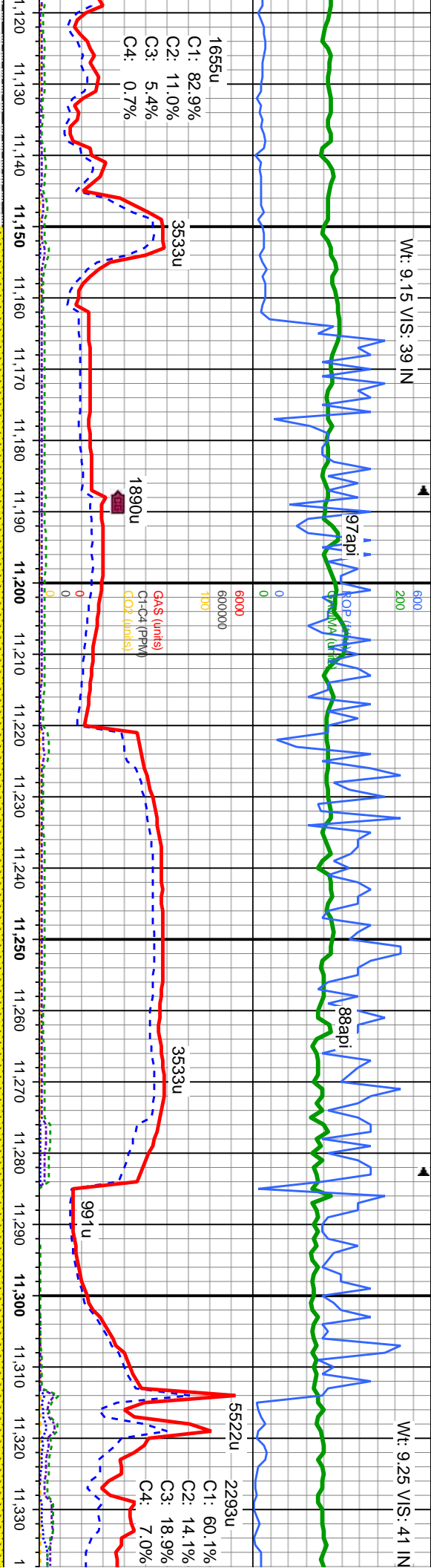
SS: lt-med gy brn, trns, lrg trns qtz grn, clus, med-f gr, ang-sb rd, med-w strd, tr - mod por; SLTY SH: med-dk gy sft-firm, sb ply-sb blk, rthy & v aren tex, occ lam, g sting cut, mod brn stn.

SS: lt-med gy br clus, med-f gr, a mod por; SLTY : ply-sb blk, rthy sting cut, mod b



Wt: 9.15 VIS: 39 IN

Wt: 9.25 VIS: 41 IN



MD: 11,134'
TVD: 7,283.91'
Inclination: 91.5 °
Azimuth: 177.8 °
VS: -3,765.71'

MD: 11,229'
TVD: 7,280.43'
Inclination: 92.7 °
Azimuth: 177.9 °
VS: -3,860.58'

MD: 11,324'
TVD: 7,277.03'
Inclination: 91.4 °
Azimuth: 177.5 °
VS: -3,956.44'

n, trnsf, lrg trnsf qtz gm,
ng-sb rd, med-w srtf, tr -
SS: med-dk gy sft-fm, sb
& v aren tex, occ lam, g
m str.

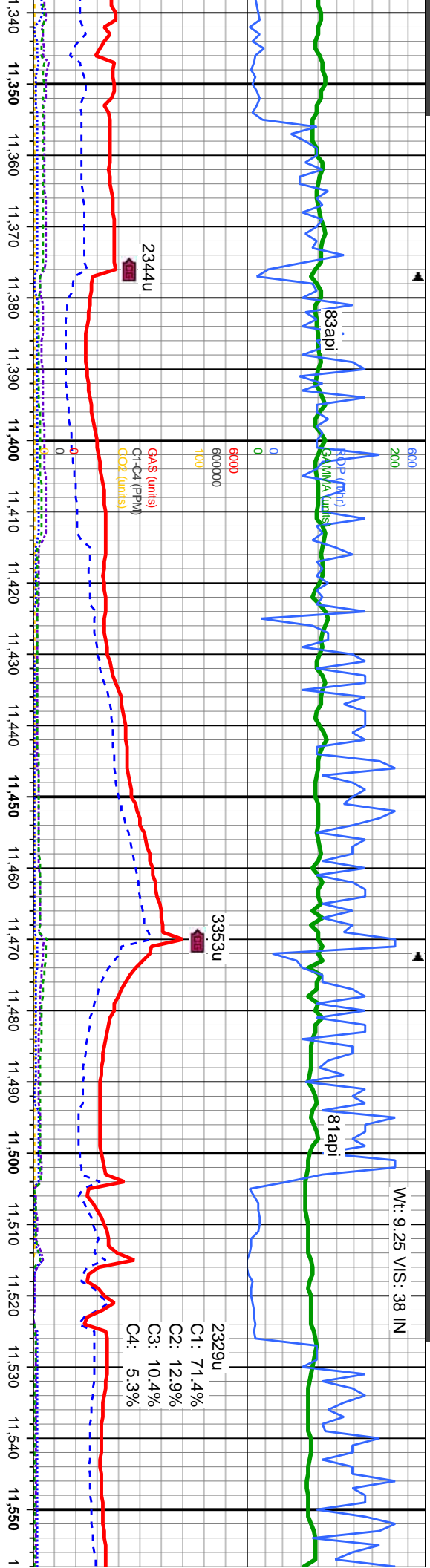
SS: lt-med gy brn, trnsf, lrg trnsf qtz gm,
clns, med-f gr, ang-sb rd, med-w srtf, tr -
mod por, g stmg cut, mod brn str.

SS: lt-med gy brn, trnsf, lrg trnsf qtz gm,
clns, med-f gr, ang-sb rd, med-w srtf, tr -
mod por, g stmg cut, mod brn str.

SS: lt-med gy brn, trnsf, lrg trnsf qtz gm,
clns, med-f gr, ang-sb rd, med-w srtf, tr -
mod por, g stmg cut, mod brn str.

SS: lt-med gy brn, trnsf, lrg trnsf qtz gm,
clns, med-f gr, ang-sb rd, med-w srtf, tr -
mod por, g stmg cut, mod brn str.





MD: 11,419 '
TVD: 7,276.53 '
Inclination: 89.2 °
Azimuth: 177.2 °
VS: -4,050.33 '

6700

TVD: (ft)

SS: lt-med gy brn, trns, lrg trns qtz grn,
clus, med-f gr, ang-sb rd, med-w strd, tr -
mod por, g sting cut, mod brn stn.

SS: lt-med gy brn, trns, lrg trns qtz grn,
clus, med-f gr, ang-sb rd, med-w strd, tr -
mod por, g sting cut, mod brn stn.

SS: lt-med gy brn, trns, lrg trns qtz grn,
clus, med-f gr, ang-sb rd, med-w strd, tr -
mod por, g sting cut, mod brn stn.

SS: lt-med gy brn, trns, lrg trns qtz grn,
clus, med-f gr, ang-sb rd, med-w strd, tr -
mod por, g sting cut, mod brn stn.

SS: lt-med gy brn, trns, lrg trns qtz grn,
clus, med-f gr, ang-sb rd, med-w strd, tr -
mod por, g sting cut, mod brn stn.



