



Weatherford®

Tooke Rockies, Inc.
(A Weatherford Company)

884 Implement Dr.
Dickinson, ND 58601
701-227-4408

717 West Platte
PO BOX 435
Casper, WY 82601
307-265-2124

Surface Logging Systems

Scale 1:240 (5"=100') Imperial
Measured Depth Log

Well Name: Tebo 29-2H (Build Sec.)
Location: SW/NW, Sec 28, T4S-R64W. Arapahoe County, CO
License Number: API- 05-005-07209-00
Spud Date: 2/5/2014
Surface Coordinates: 1980' FNL & 250' FWL of SW/NW, Sec. 28, T4S-R64W,
Arapahoe County, CO.
Bottom Hole Landing Point= 20.20'N & 785.28'W from SHL, Arapahoe County, CO.
Coordinates:
Ground Elevation (ft): 5838' K.B. Elevation (ft): 5862'
Logged Interval (ft): 7000' To: 8173' Total Depth (ft): 8173'
Formation: Niobrara
Type of Drilling Fluid: INVERT/OBM

Region: DJ Basin

Drilling Completed: 2/12/2014

Printed by MUD.LOG from WellSight Systems 1-800-447-1534 www.WellSight.com

OPERATOR

Company: Conoco/Phillips
Address: Attn: Abby Tomkiewicz
Three Westlake Park, Rm 14013
550 Westlake Park Blvd, Houston, TX 77079, Office: 832-486-2543.

GEOLOGIST

Name: Todd Thiesse, Gabriel Genitempo
Company: Tooke Rockies/ Weatherford SLS
Address: PO Box 435
Casper, WY. 82602
307.265.2124

Supervision

Project Geologist:
Drilling Engineer: Gary Hamilton, Ben Tolman, John Bengé- Conoco/Phillips
Drilling Sup: Bob Strickler- Conoco/Phillips
Company Rep: Richard Perez, Wes Evans, (Day Leads)
Company Rep: Frank Holubec, Mike Weatherly (Night Leads)
Well Site Safety: Rainey Schexnider, Jeff Frantz
Contact Geologist: Abby Tomkiewicz- Conoco/Phillips
Drilling & Comp. Mgr: Derly Gonzalez-Conoco/Phillips

Comments

Drilling Co.--H & P, Rig #280

Toolpusher- , Mike Stevens, Josh Coleman

Dir. Co.- Sperry

Mud Co.- Baroid/Haliburton, Dave Howell, Chase Putnam

ROCK TYPES

Anhy
Bent
Brec
Cht

Clyst
Coal
Congl
Dol

Gyp
Igne
Lmst
Meta

Mrlst
Salt
Shale
Shcol

Shgy
Sltst
Ss
Till

ACCESSORIES

MINERAL
Anhy
Arggrn
Arg
Bent
Bit
Brecfrag
Calc
Carb
Chtdk
Chtlt
Dol
Feldspar
Ferrpel
Ferr
Glau

Gyp
Hvymin
Kaol
Marl
Minxl
Nodule
Phos
Pyr
Salt
Sandy
Silt
Sil
Sulphur
Tuff

FOSSIL
Algae
Amph
Belm
Bioclst
Brach
Bryozoa
Cephal
Coral
Crin
Echin
Fish
Foram
Fossil
Gastro
Oolite

Ostra
Pelec
Pellet
Pisolite
Plant
Strom

STRINGER
Anhy
Arg
Bent
Coal
Dol
Gyp
Ls
Mrst

Sltstrg
Ssstrg

TEXTURE
Boundst
Chalky
Cryxln
Earthy
Finexln
Grainst
Lithogr
Microxln
Mudst
Packst
Wackest

OTHER SYMBOLS

INTERVALS
Core
Dst

EVENTS
Rft
Sidewall

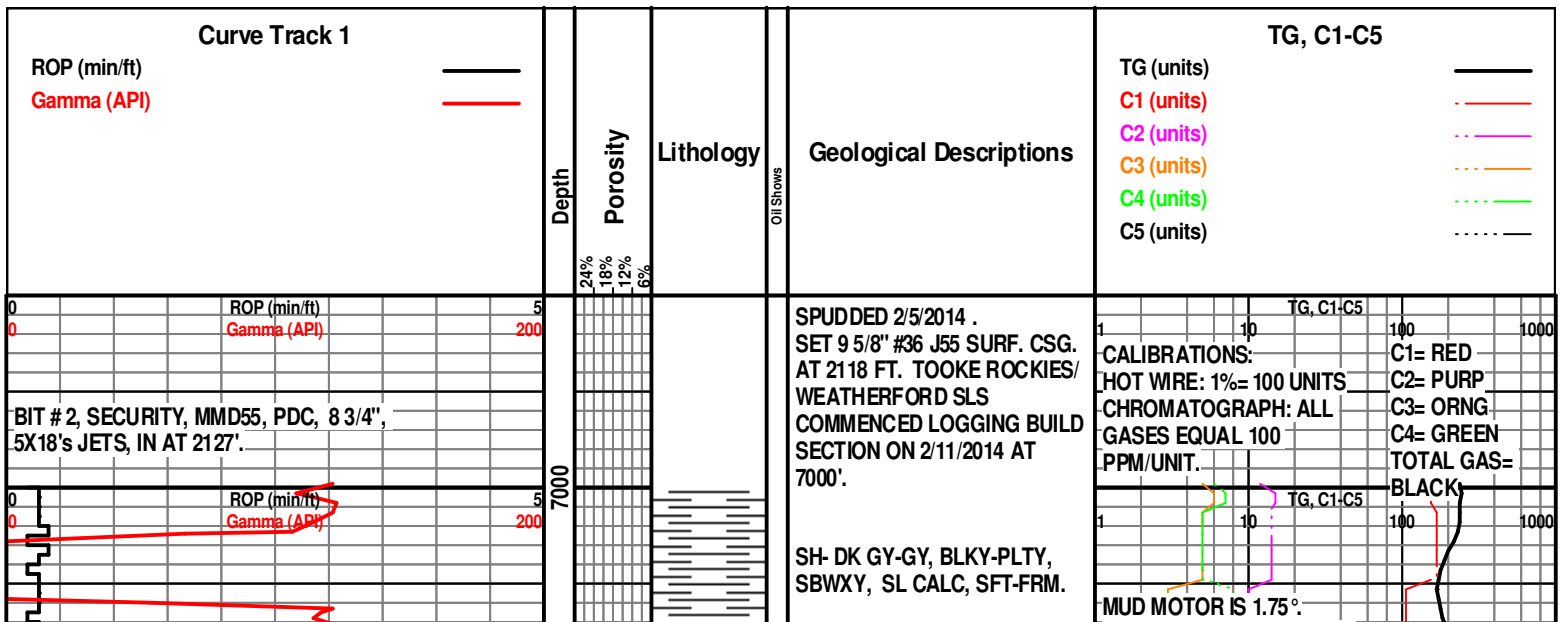
POROSITY TYPE
Earthy
Fenest
Fracture
Inter
Moldic
Organic

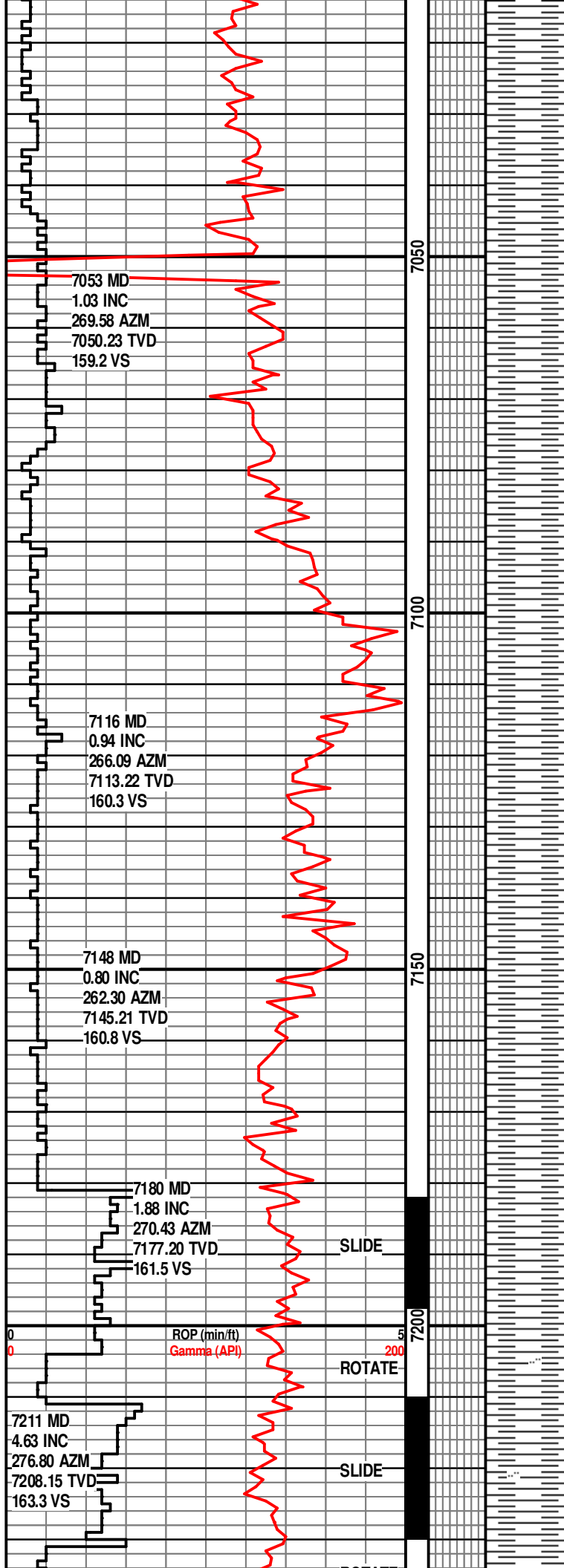
Pinpoint
Vuggy

SORTING
Well
Moderate
Poor

ROUNDING
Rounded
Subrnd
Subang
Angular

OIL SHOWS
Even
Spotted
Ques
Dead





SH- DK GY-GY, DK BRN,
BLKY-PLTY, SBWXY-CHKY, SL
CALC, V SFT-FRM.

SH- DK GY-GY, BLKY-PLTY,
SBWXY, SL CALC, SFT-FRM.

SH- DK GY-GY, DK BRN,
BLKY-PLTY, SBWXY, SL CALC,
CARB LAM, SFT- FRM.

SH- DK GY-GY, DK BRN,
BLKY-PLTY, SBWXY, SL CALC,
CARB LAM, SFT- FRM.

SH- DK GY-GY, OCC DK BRN,
BLKY-PLTY, SBWXY, SL
CALC, SFT-FRM.

KOP= 7181' MD.

SH- DK GY-GY, DK BRN,
BLKY-PLTY, SBWXY, SL CALC,
OCC SLTY, SFT- FRM.

SH- DK GY-GY, DK BRN,
BLKY-PLTY, SBWXY, SL CALC,
SFT- FRM.

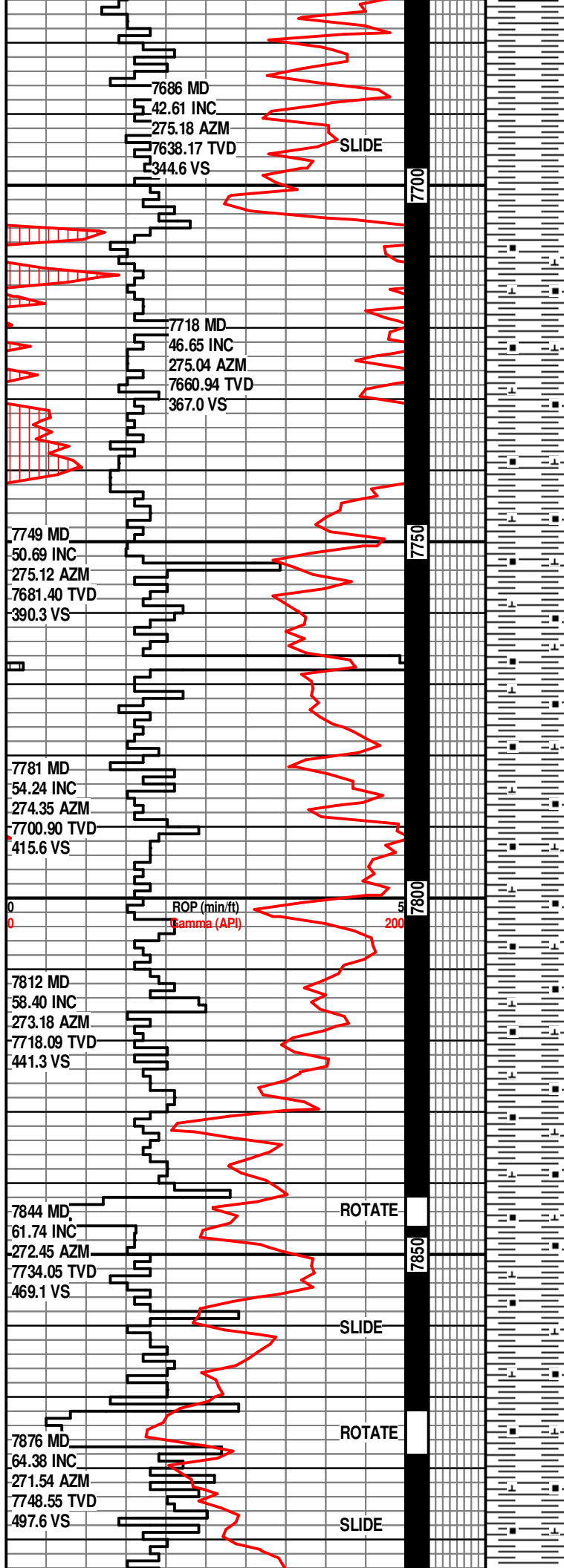
SURVEY IS 64' BEHIND BIT.
GAMMA IS 31.44' BEHIND BIT.

WT. IN, 9.2, OUT, 9.2
VIS. IN, 42, OUT, 42

WOB. 9-10K
RPM. 70
PP. 3535
SPM. 111
GPM. 500

WT. IN, 9.2+, OUT, 9.2+
VIS. IN, 43, OUT, 43

TG, C1-C5



SFT-FRM.

SH- DK GY-GY, DK BRN,
BLKY-PLTY, SBWXY, SL CALC,
SFT-FRM.

SAMPLE TOP NIOBRARA 7708

2/12/2014

SH- DK GY-GY, DK BRN, BLKY-
PLTY, SBWXY, V CALC, CARB
W/CARB LAM, SFT- FRM.

SH- DK GY-GY, DK BRN, BLKY-
PLTY, SBWXY, V CALC, CARB
W/CARB LAM, SFT- FRM.

SH- DK GY-GY, DK BRN, BLKY-
PLTY, SBWXY, V CALC, V
CARB, SFT- FRM.

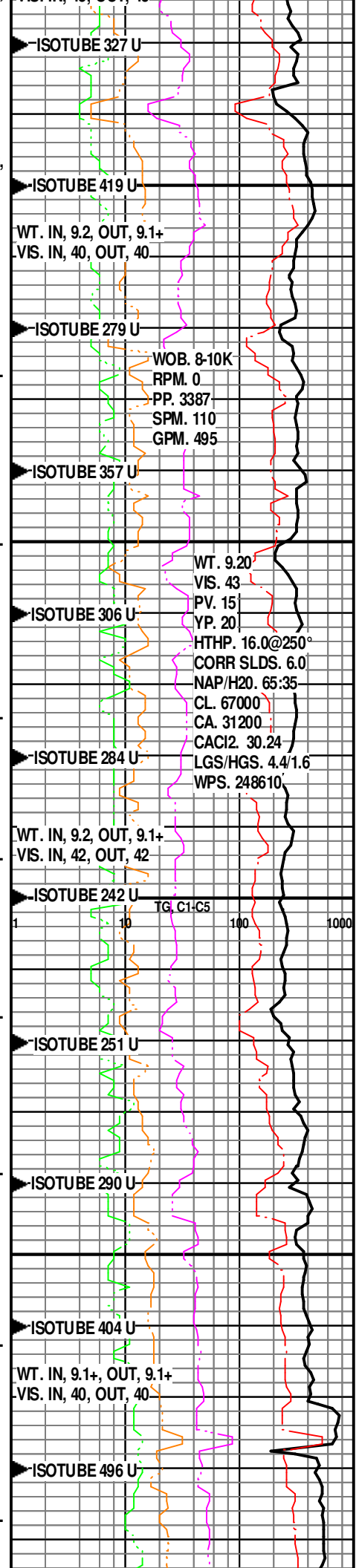
SH- DK GY-GY, DK BRN, BLKY-
PLTY, SBWXY, V CALC, V
CARB, SFT- FRM, TR CALC.

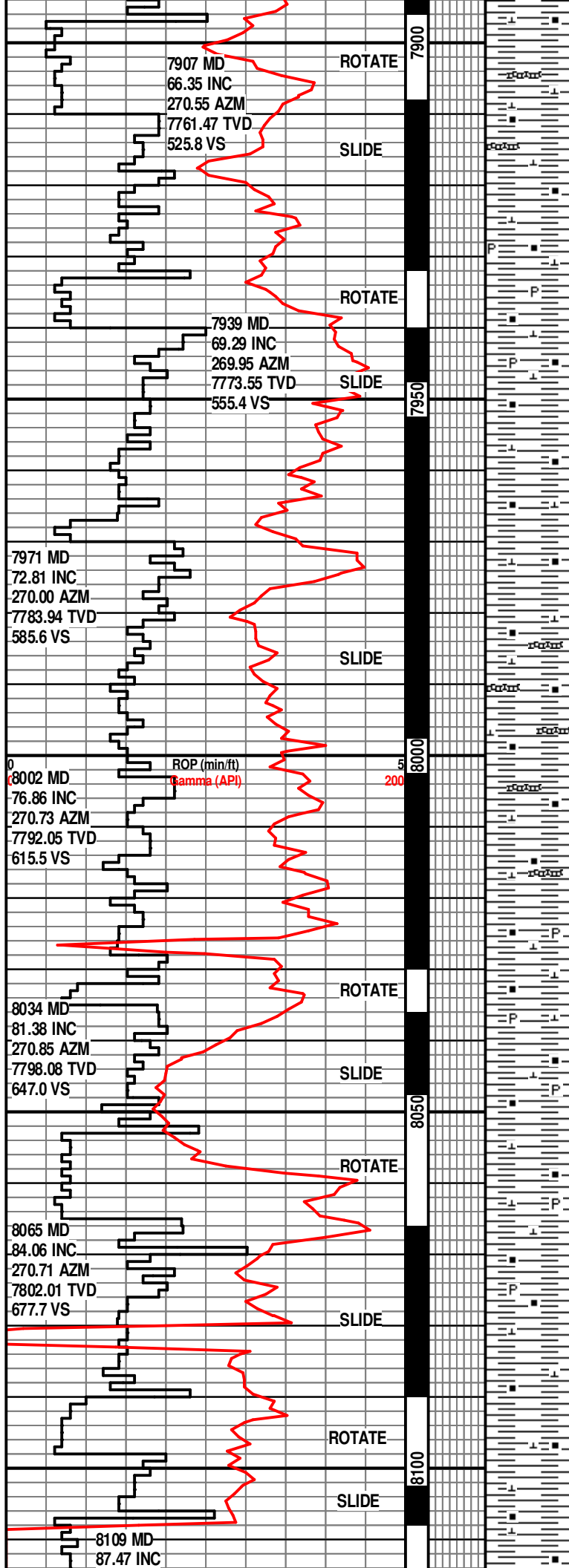
SH- DK GY-GY, DK BRN, BLKY-
PLTY, SBWXY, V CALC, V
CARB, SFT- FRM, TR CALC.

SH- DK GY-GY, DK BRN, BLKY-
PLTY, SBWXY, V CALC, V
CARB, SFT- FRM, TR CALC, &
PYR.

SH- DK GY-GY, DK BRN, BLKY-
PLTY, SBWXY, V CALC, V
CARB, SFT- FRM, TR CALC.

SH- DK GY-GY, DK BRN, BLKY-
PLTY, SBWXY, V CALC, V
CARB, SFT- FRM, TR CALC.





SH- DK GY-GY, DK BRN, BLKY-
PLTY, SBWXY, V CALC, V
CARB, SFT- FRM, TR CALC. W/
BENT- WH-LT GY, CRM.

SH- DK GY-GY, OCC DK BRN,
BLKY- PLTY, SBWXY, V CALC,
V CARB, TR CALC FL FRAC &
CALCITE, SFT- FRM, W/ TR
PYR.

SH- DK GY-GY, SME DK BRN,
BLKY- PLTY, SBWXY, V CALC,
V CARB, TR CALC FL FRAC &
CALCITE, SFT- FRM.

SH- DK GY-GY, DK BRN, BLKY-
PLTY, SBWXY, V CALC, V
CARB, SFT- FRM, TR CALC. W/
BENT- GY/GN, TAN-WH.

SH- DK GY-GY, OCC DK BRN,
BLKY- PLTY, SBWXY, V CALC,
CARB, SFT- FRM, TR CALC &
CALC FL FRAC, W/ BENT-
GY/GN, TAN-WH.

SH- DK GY-GY, SME DK BRN,
BLKY- PLTY, SBWXY, V CALC,
V CARB, TR CALC FL FRAC &
CALCITE, SFT- FRM, W/ TR
PYR.

SH- DK GY-BLK, GY, OCC DK
BRN, BLKY-PLTY, SBWXY, V
CALC-LMY, CARB, TR CALC FL
FRAC & CALCITE, SFT-FRM. W/
TR PYR.

SH- DK GY-BLK, GY, OCC DK
BRN, BLKY-PLTY, SBWXY, V
CALC-LMY, CARB, TR CALC FL
FRAC & CALCITE, SFT-FRM. W/
TR PYR.

SH- DK GY-GY, BLK,
BLKY-PLTY, SBWXY, V
CALC-LMY, CARB, INCR IN
CALC FL FRAC & CALCITE,
SFT-FRM.

SH- DK GY-BLK, GY, OCC DK
BRN, BLKY-PLTY, SBWXY, V
CALC-LMY, CARB, TR CALC FL

