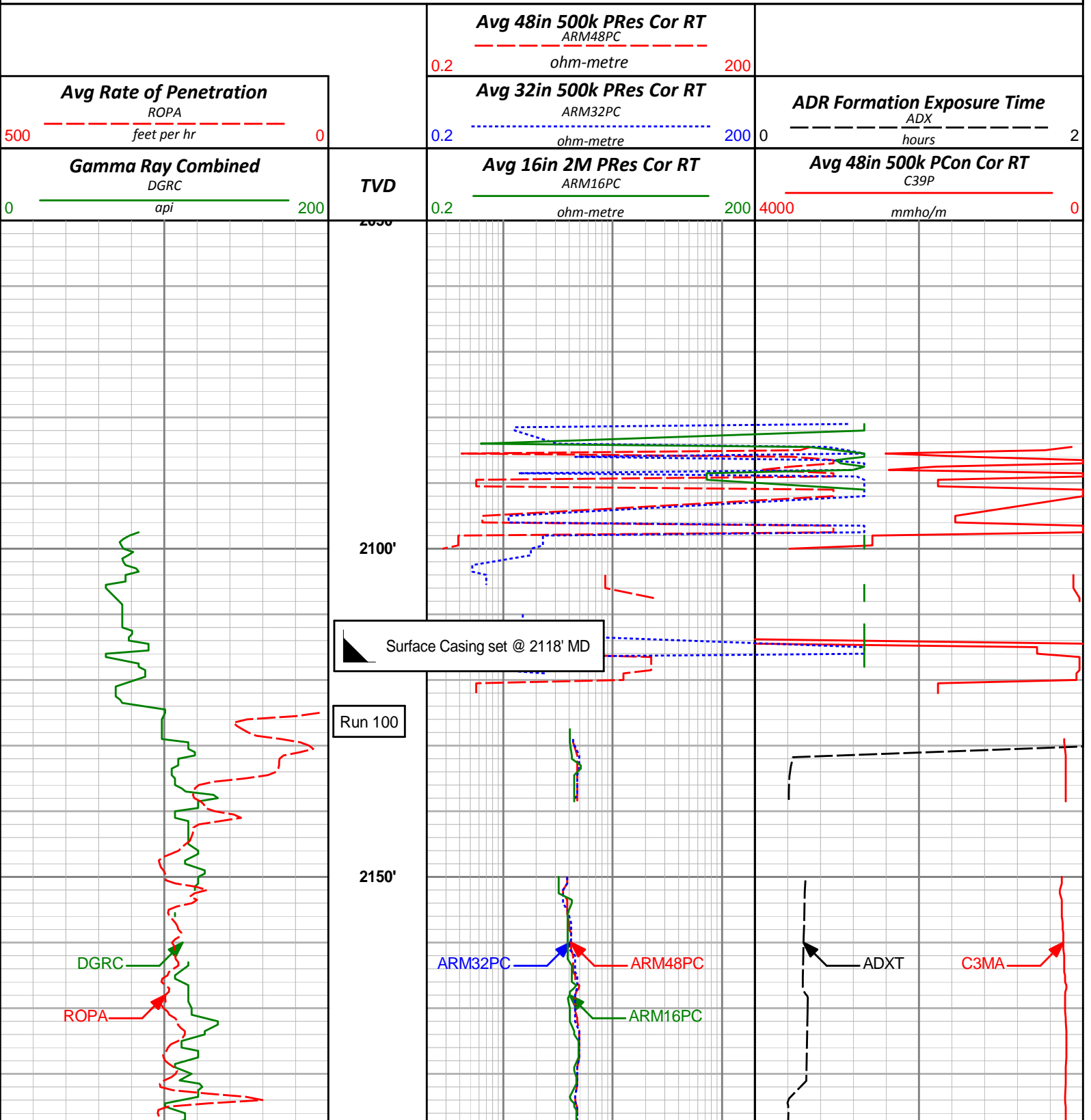


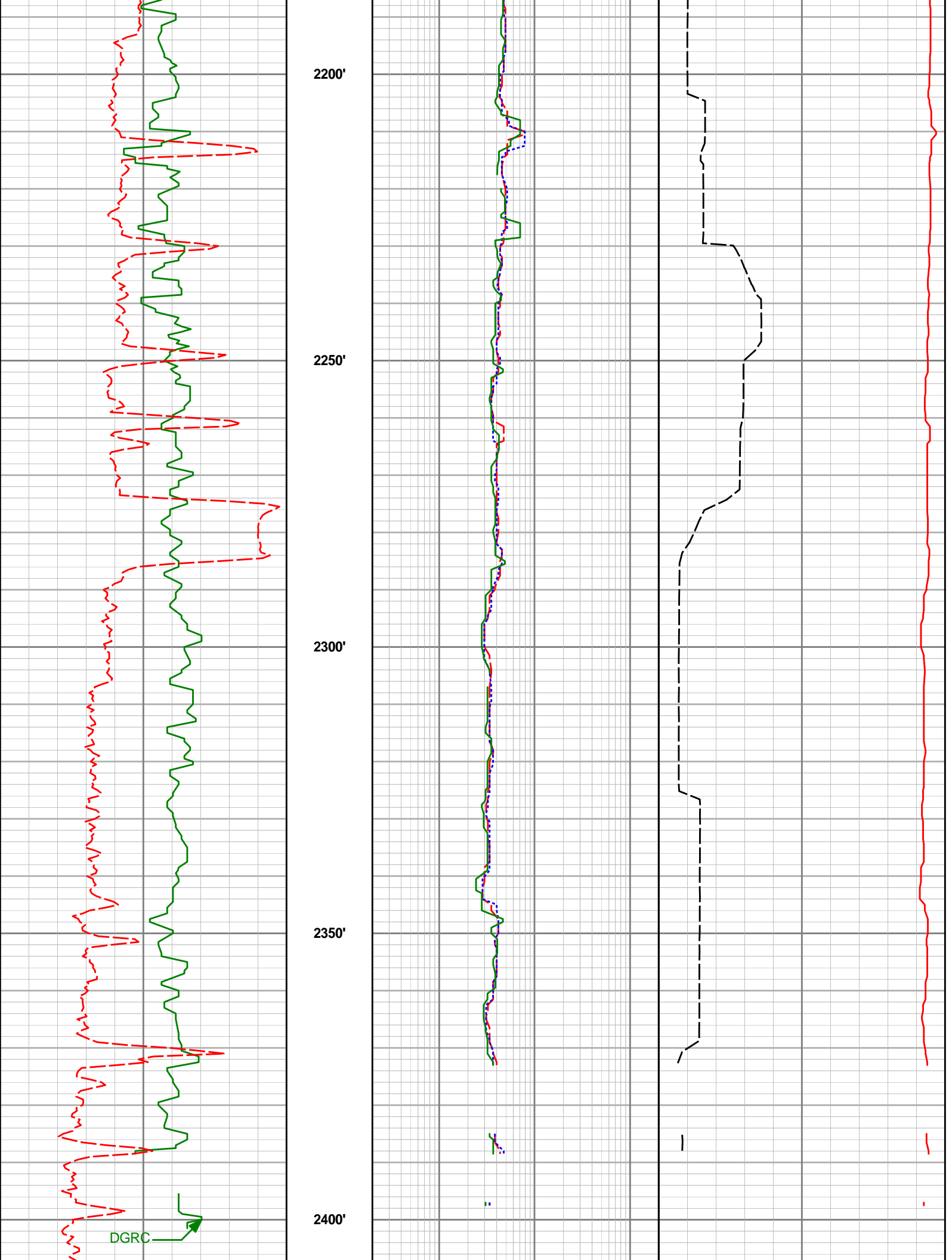
# HALLIBURTON

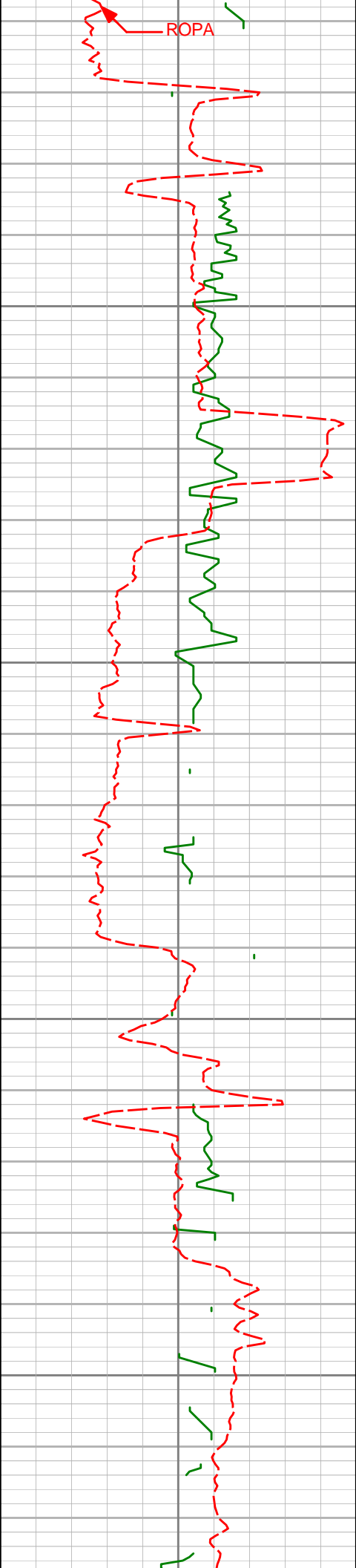
Sperry Drilling

## TVD Detailed Log 1:240

Conoco Phillips  
Tebo 29-2H  
H&P 280  
T4S-R64W





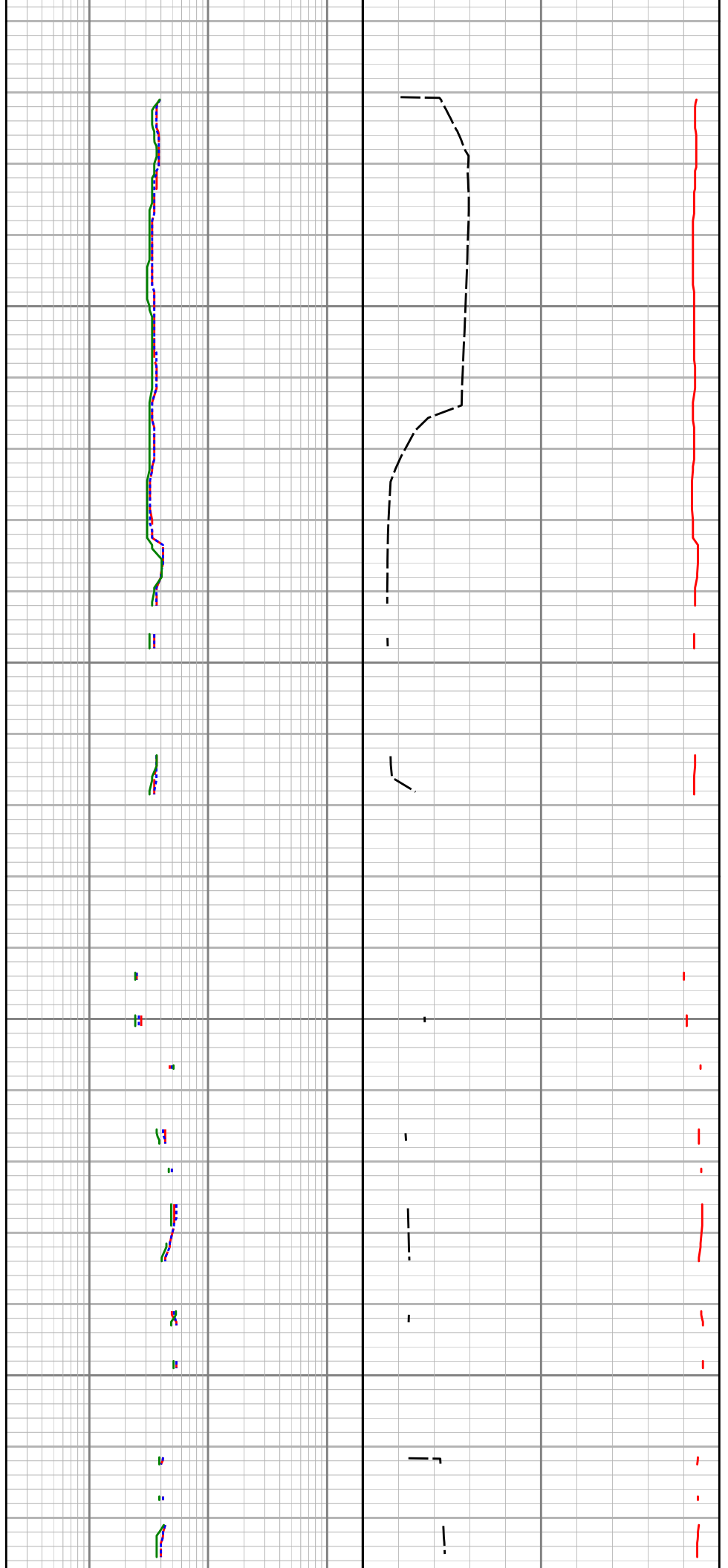


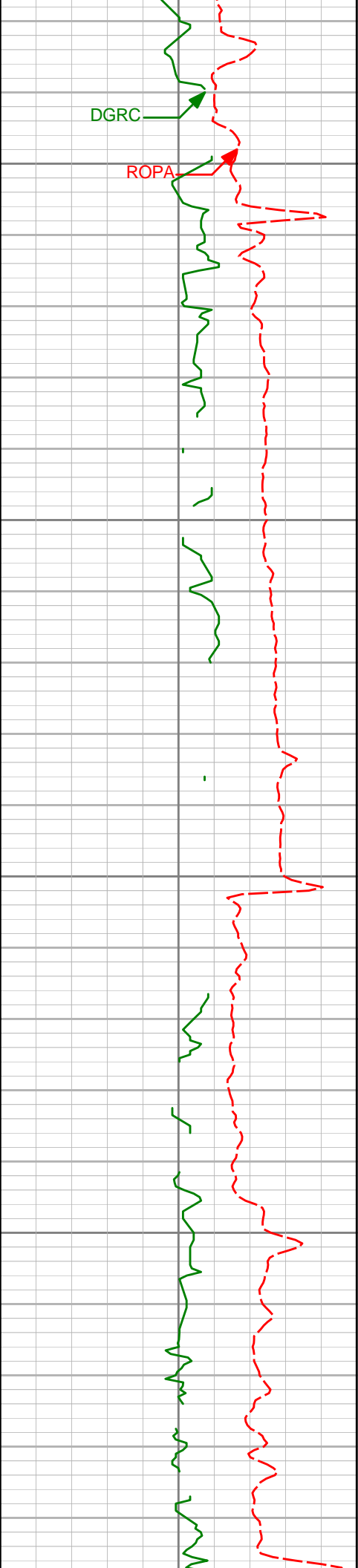
2450'

2500'

2550'

2600'



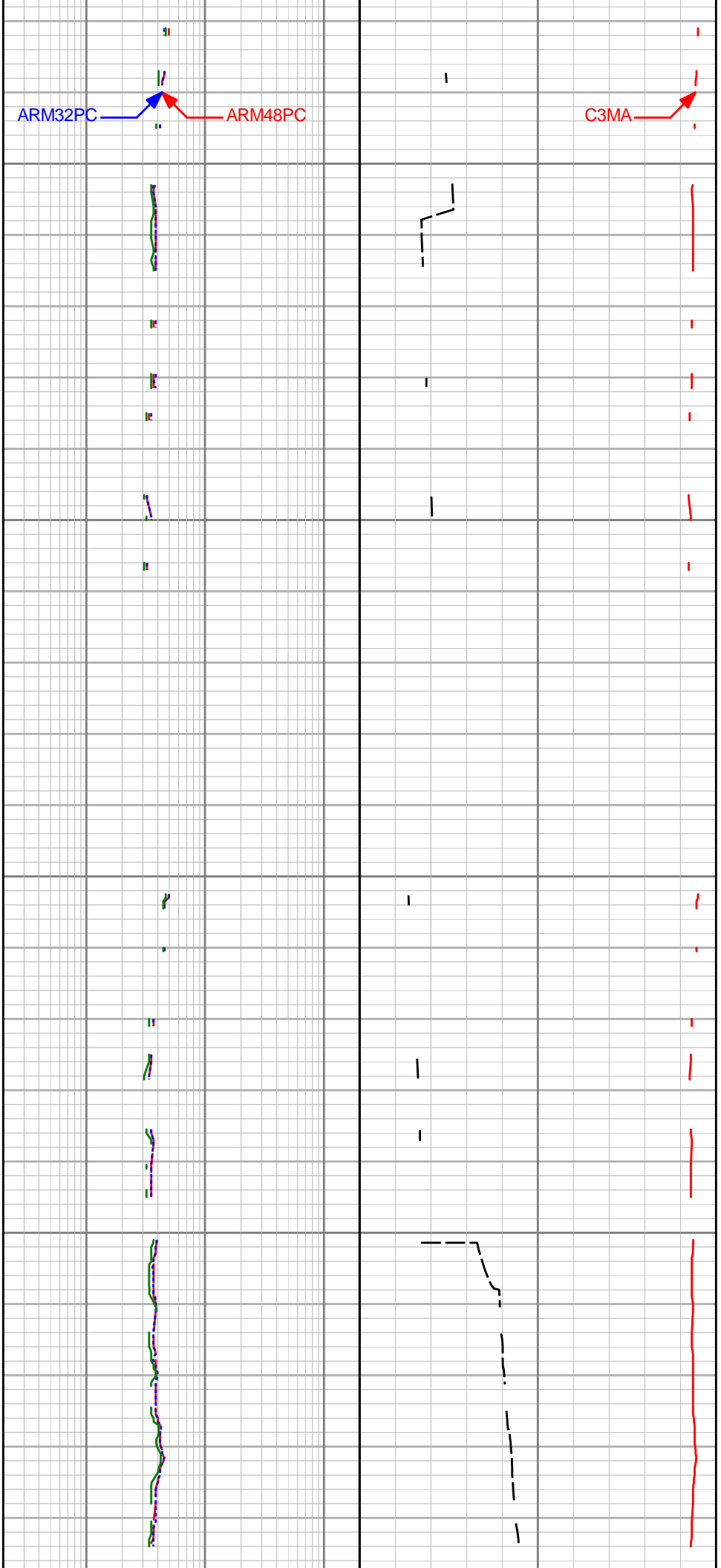


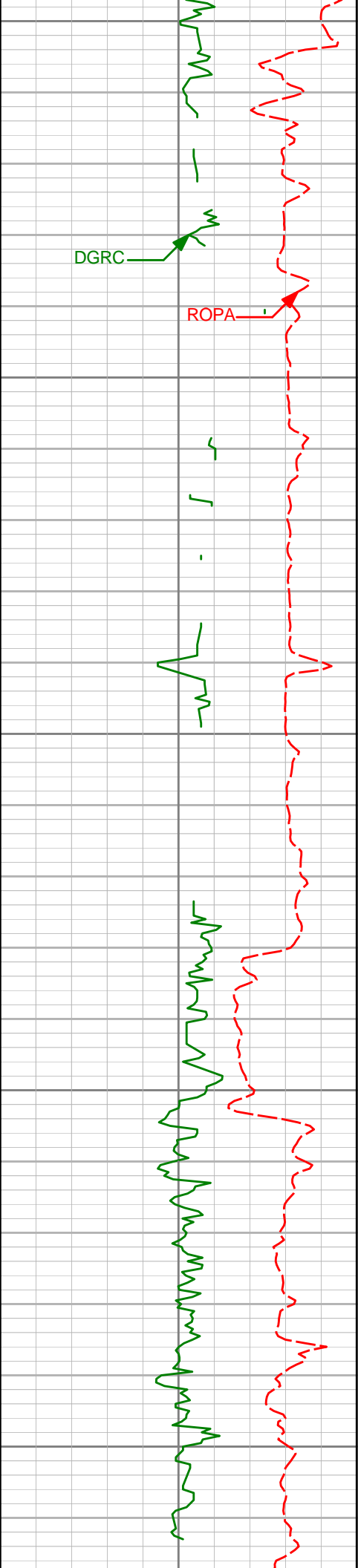
2650'

2700'

2750'

2800'





2850'

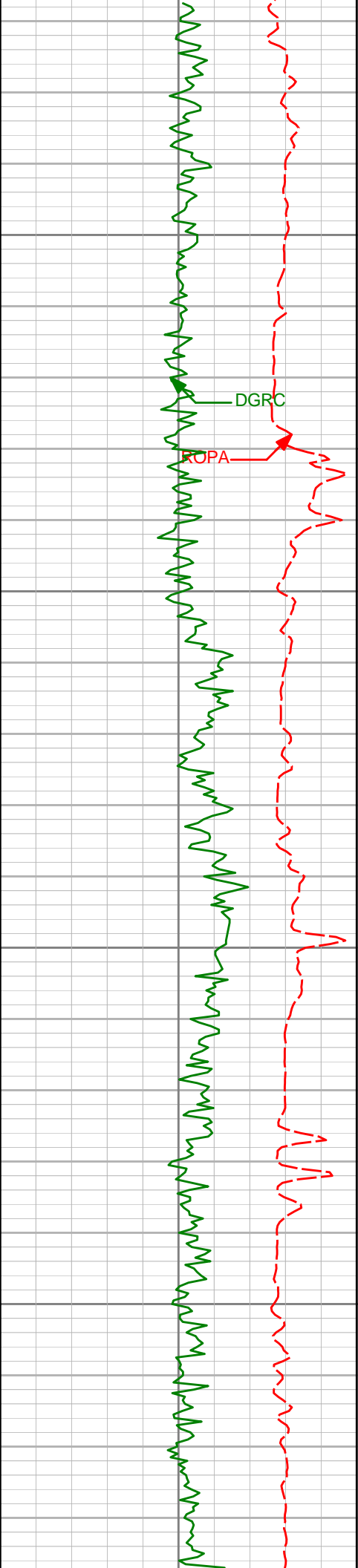
2900'

2950'

3000'

3050'



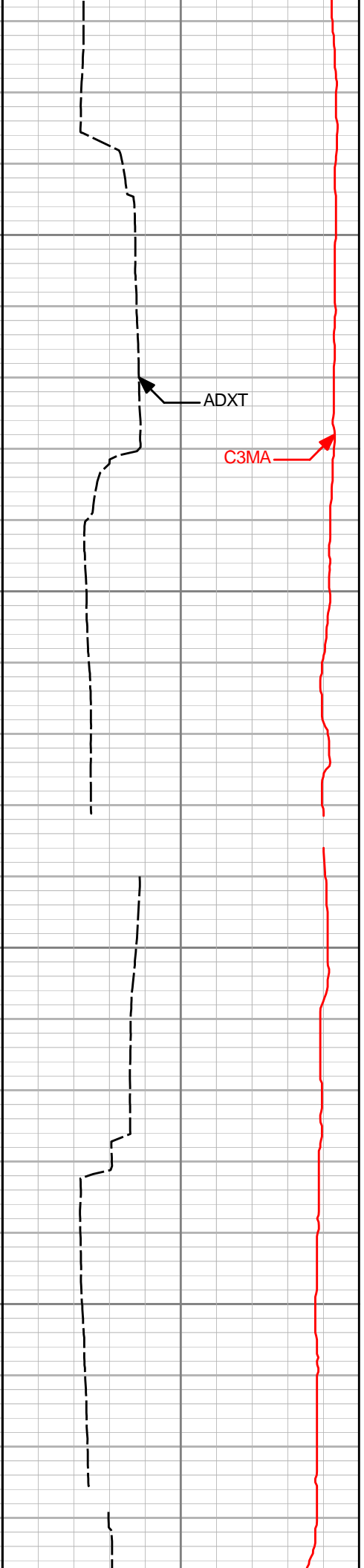
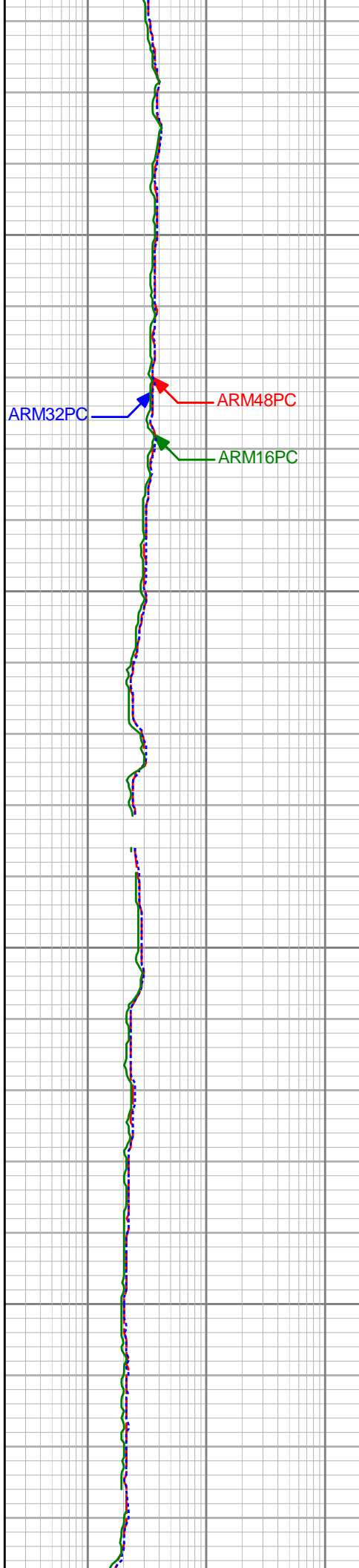


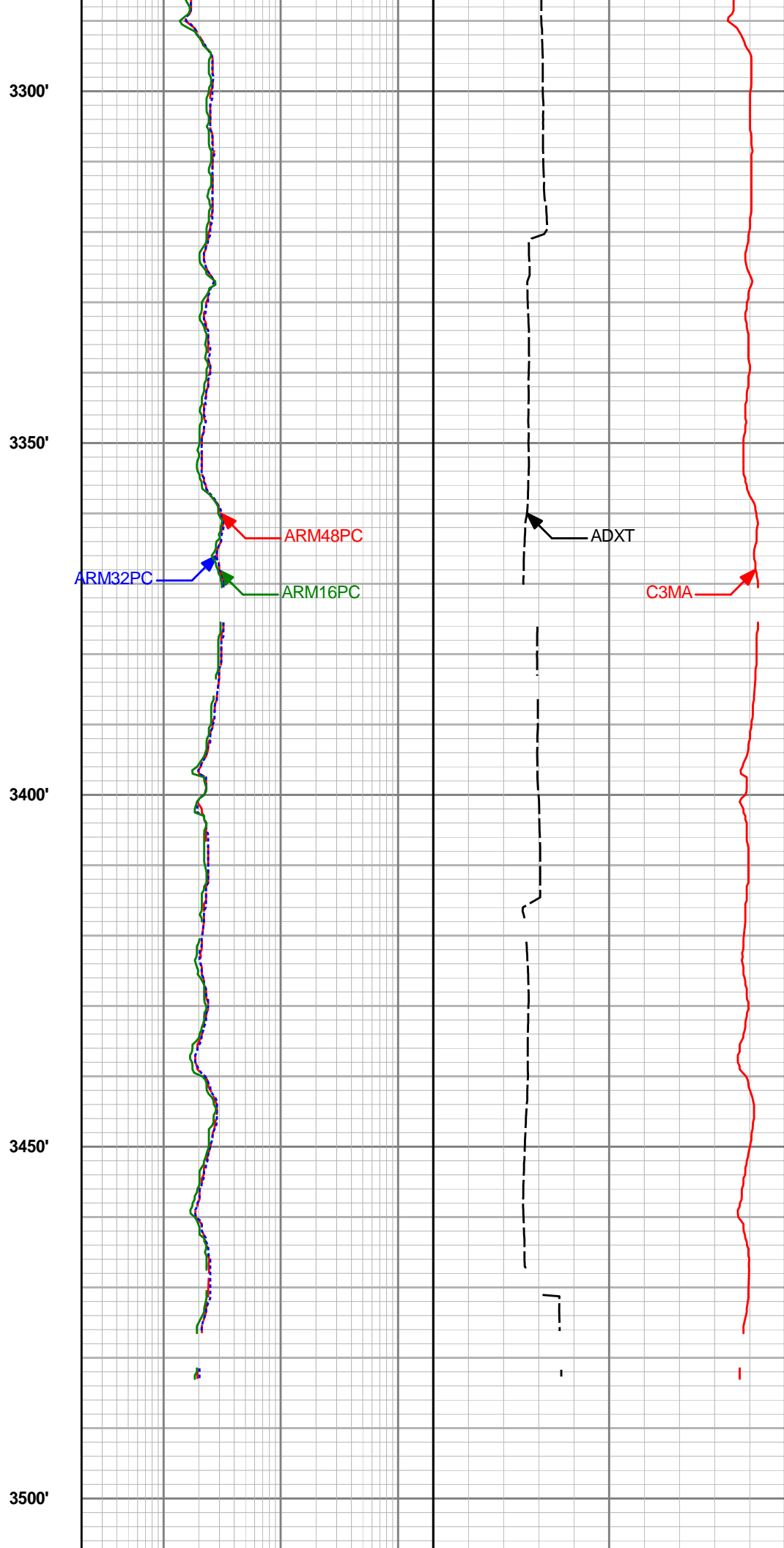
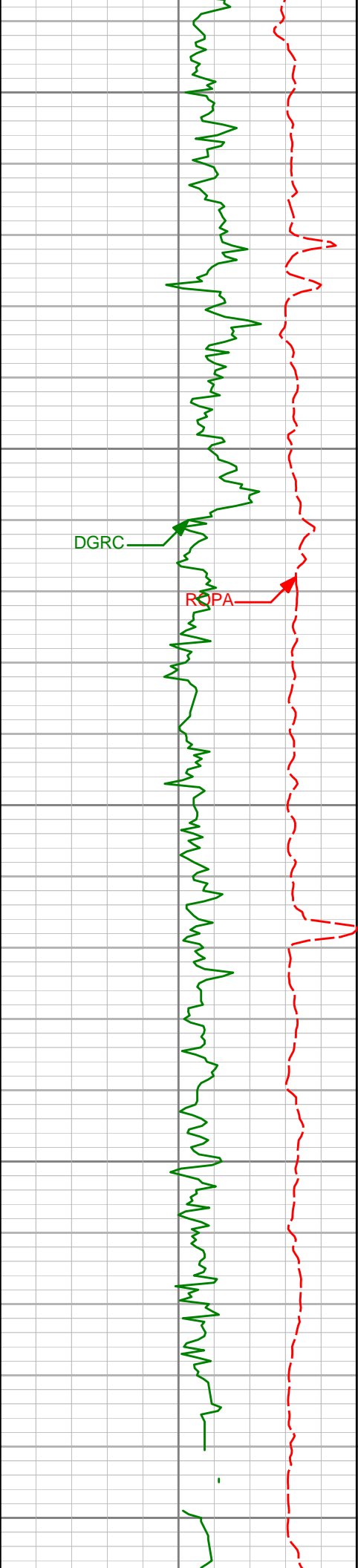
3100'

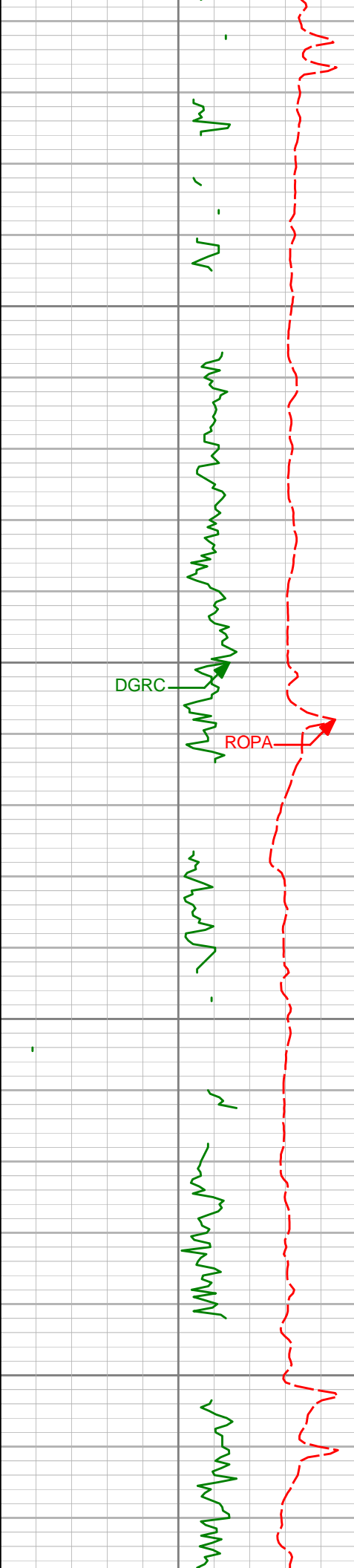
3150'

3200'

3250'





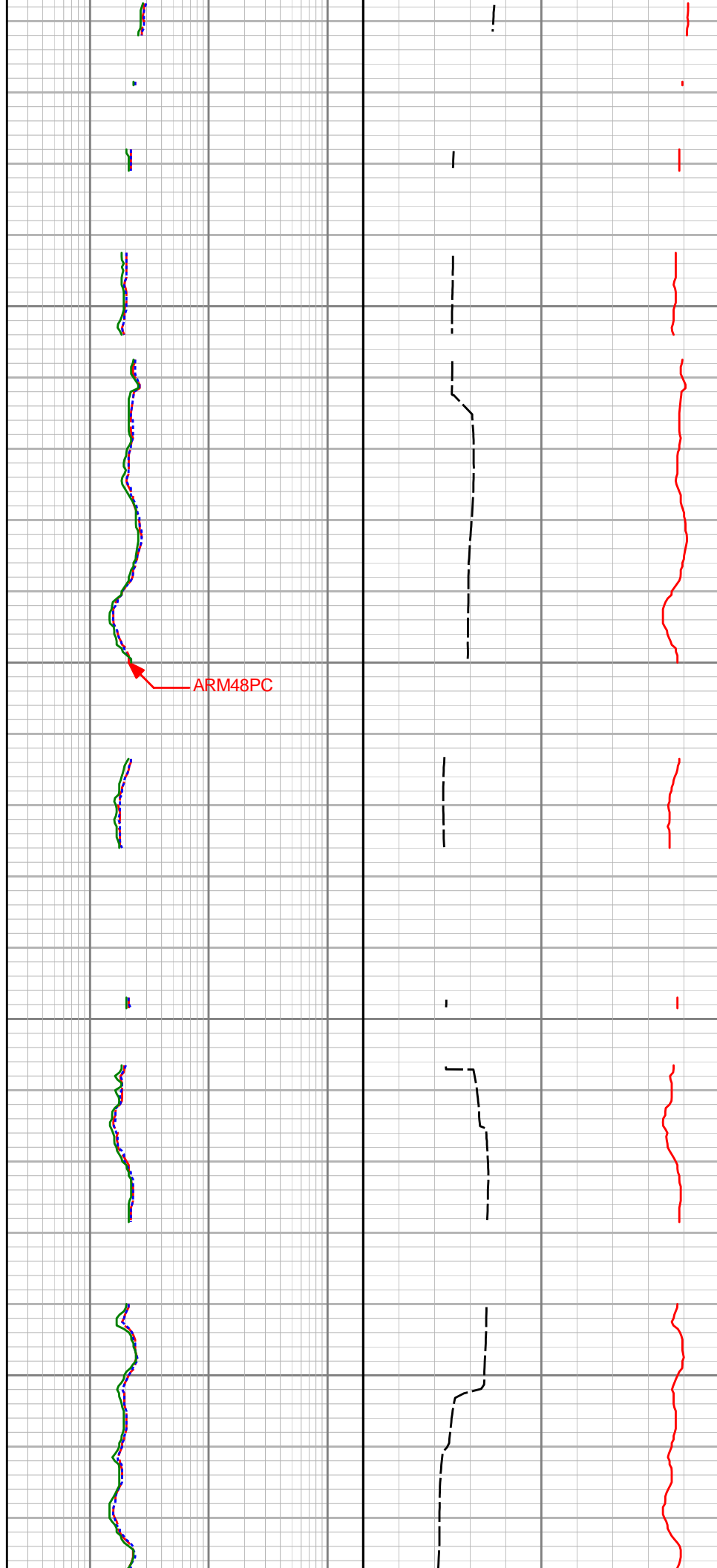


3550'

3600'

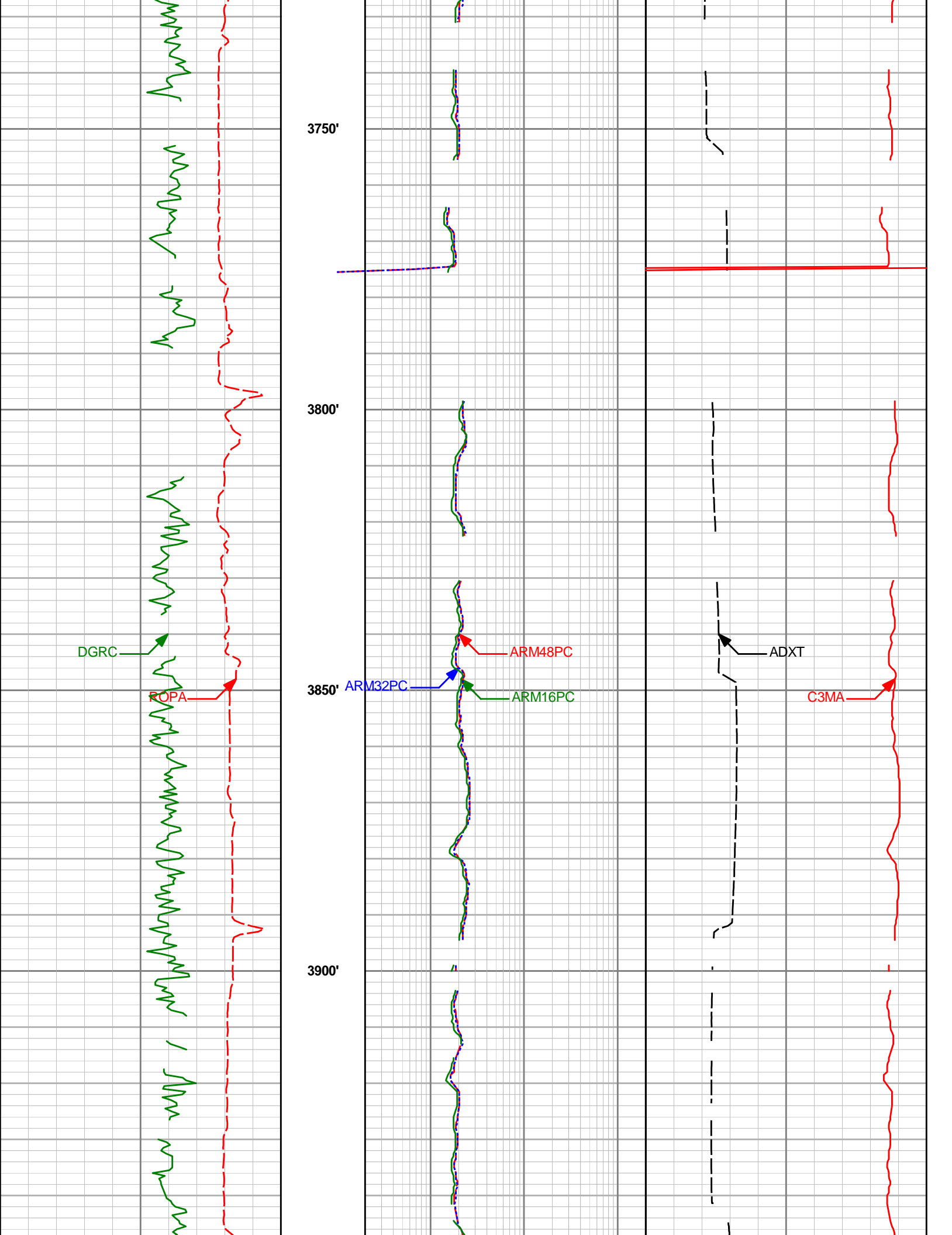
3650'

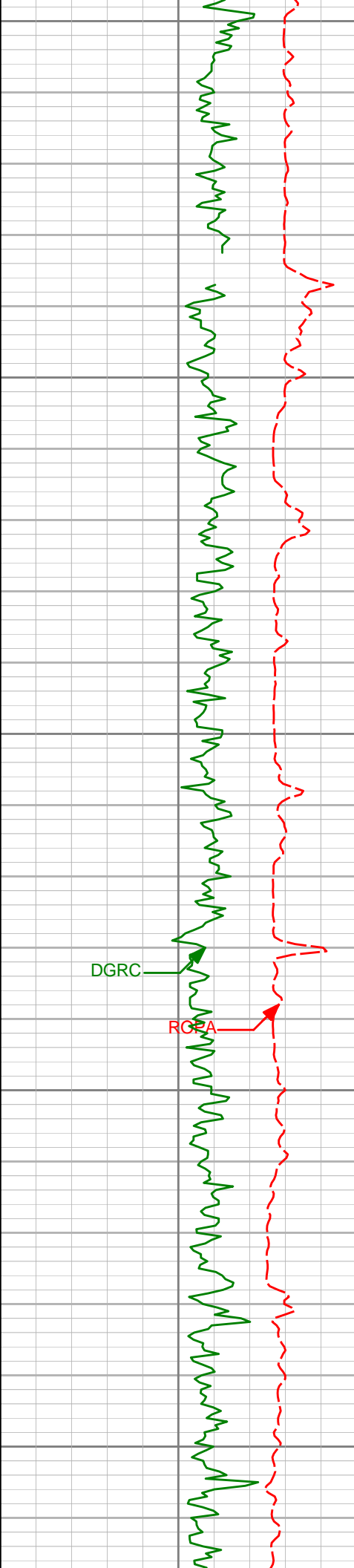
3700'



ARM48PC







3950'

4000'

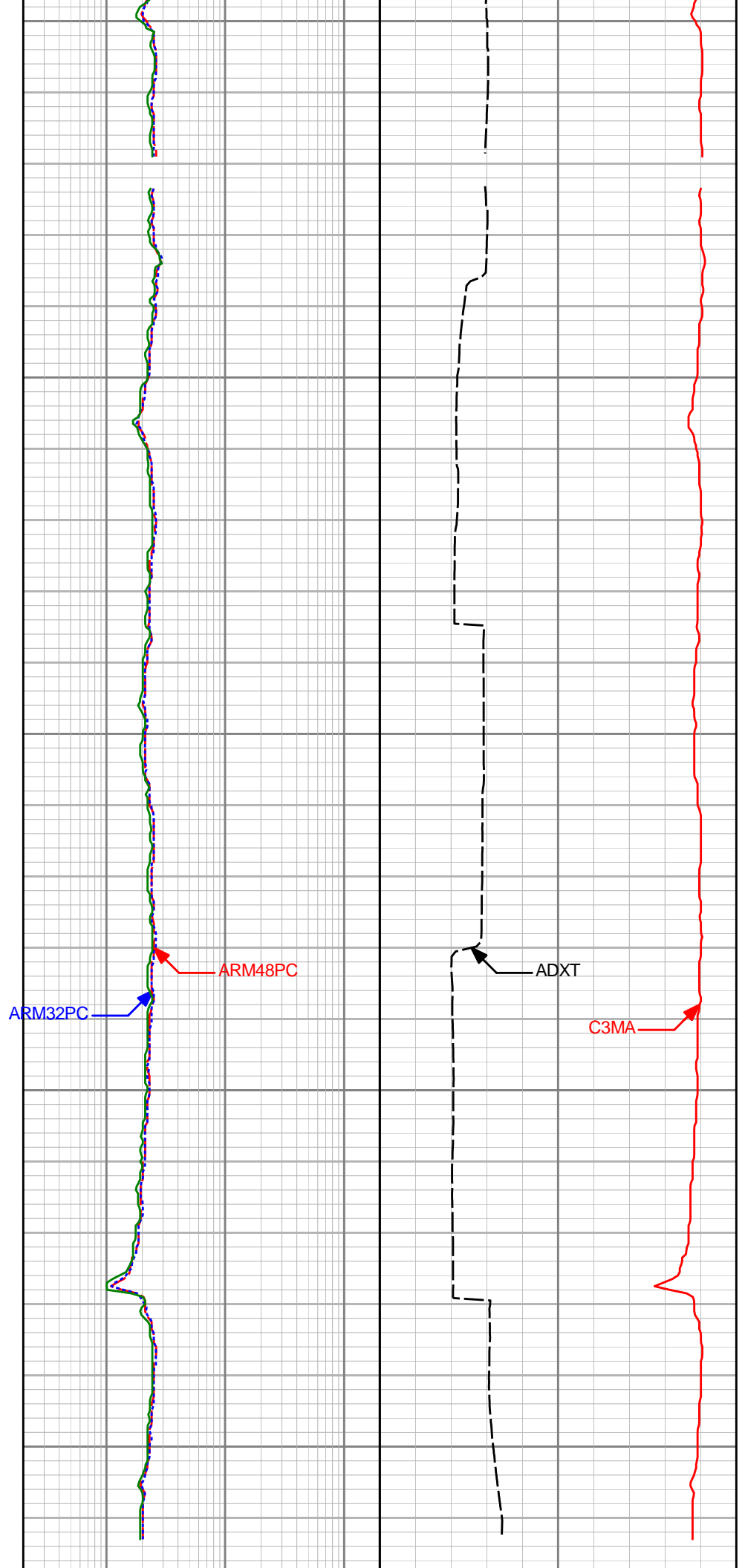
4050'

4100'

4150'

DGRC

RGA

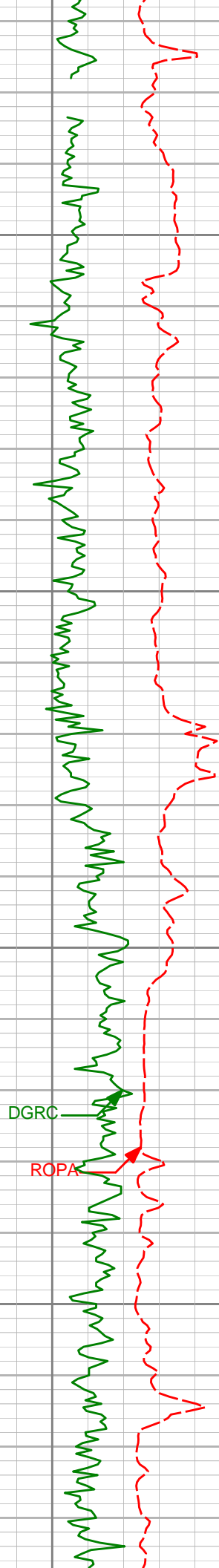


ARM32PC

ARM48PC

ADXT

C3MA

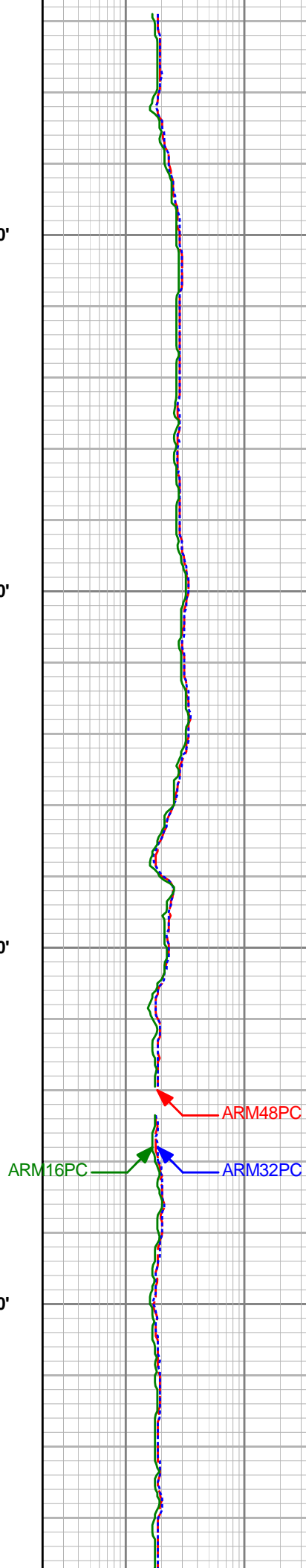


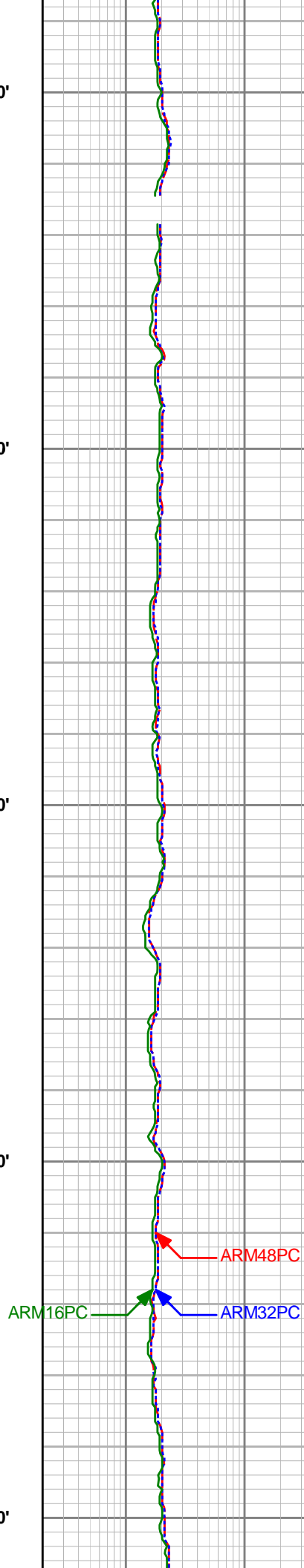
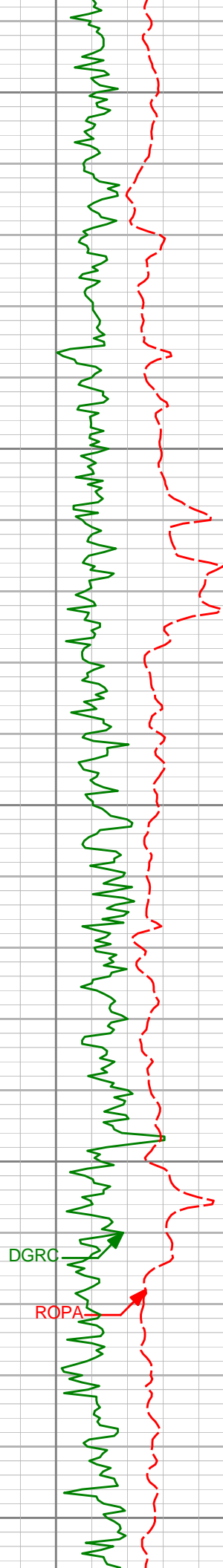
4200'

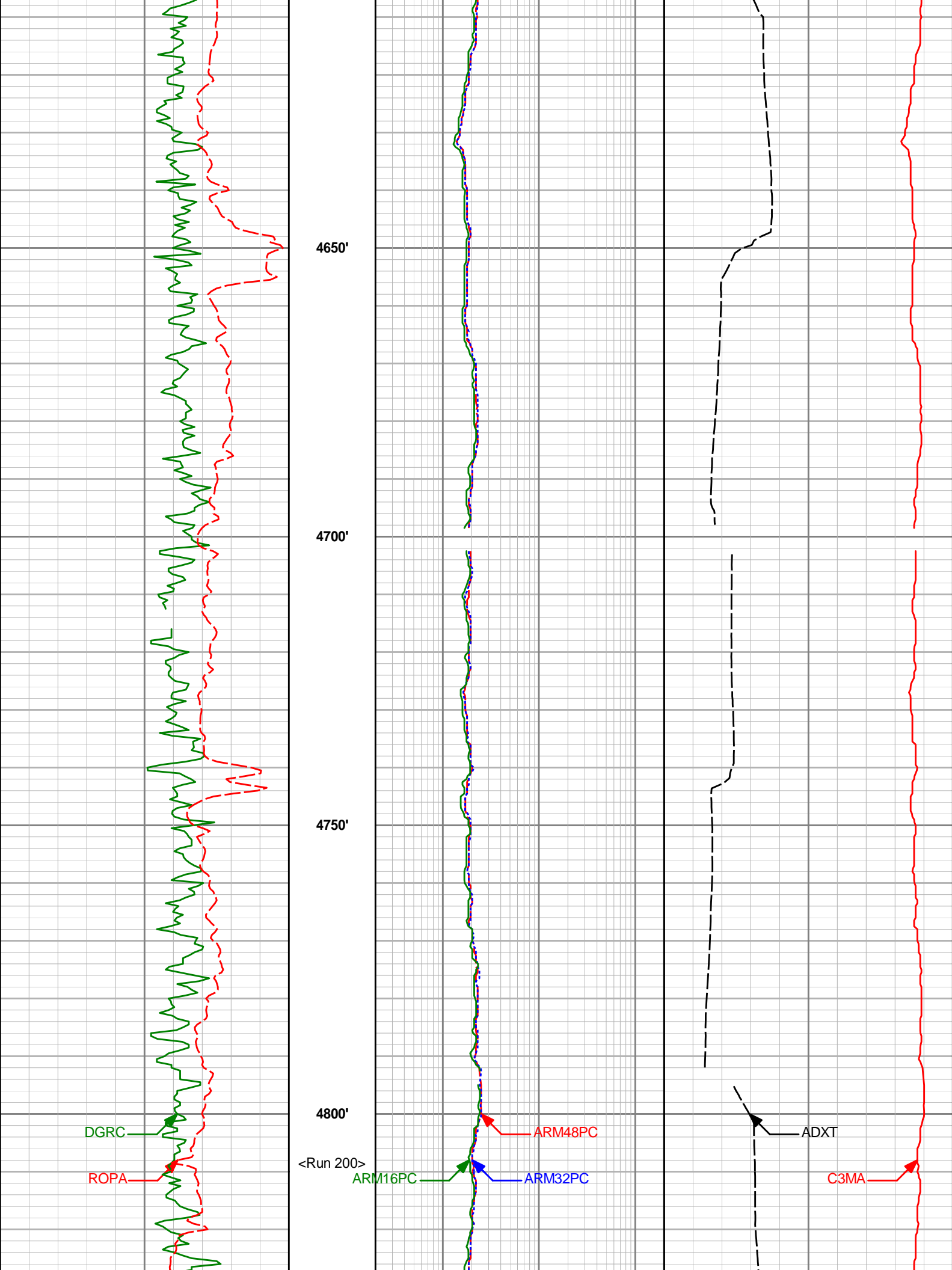
4250'

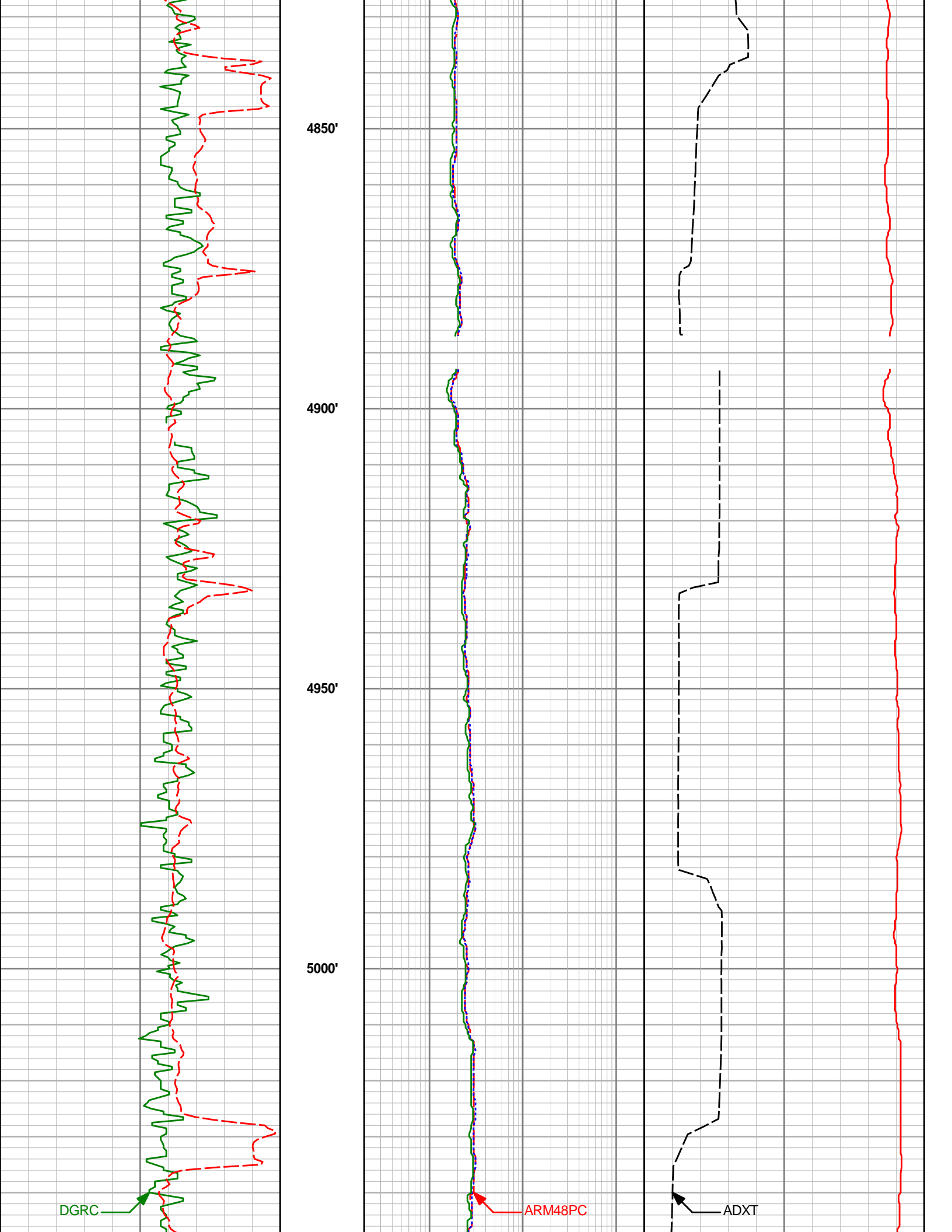
4300'

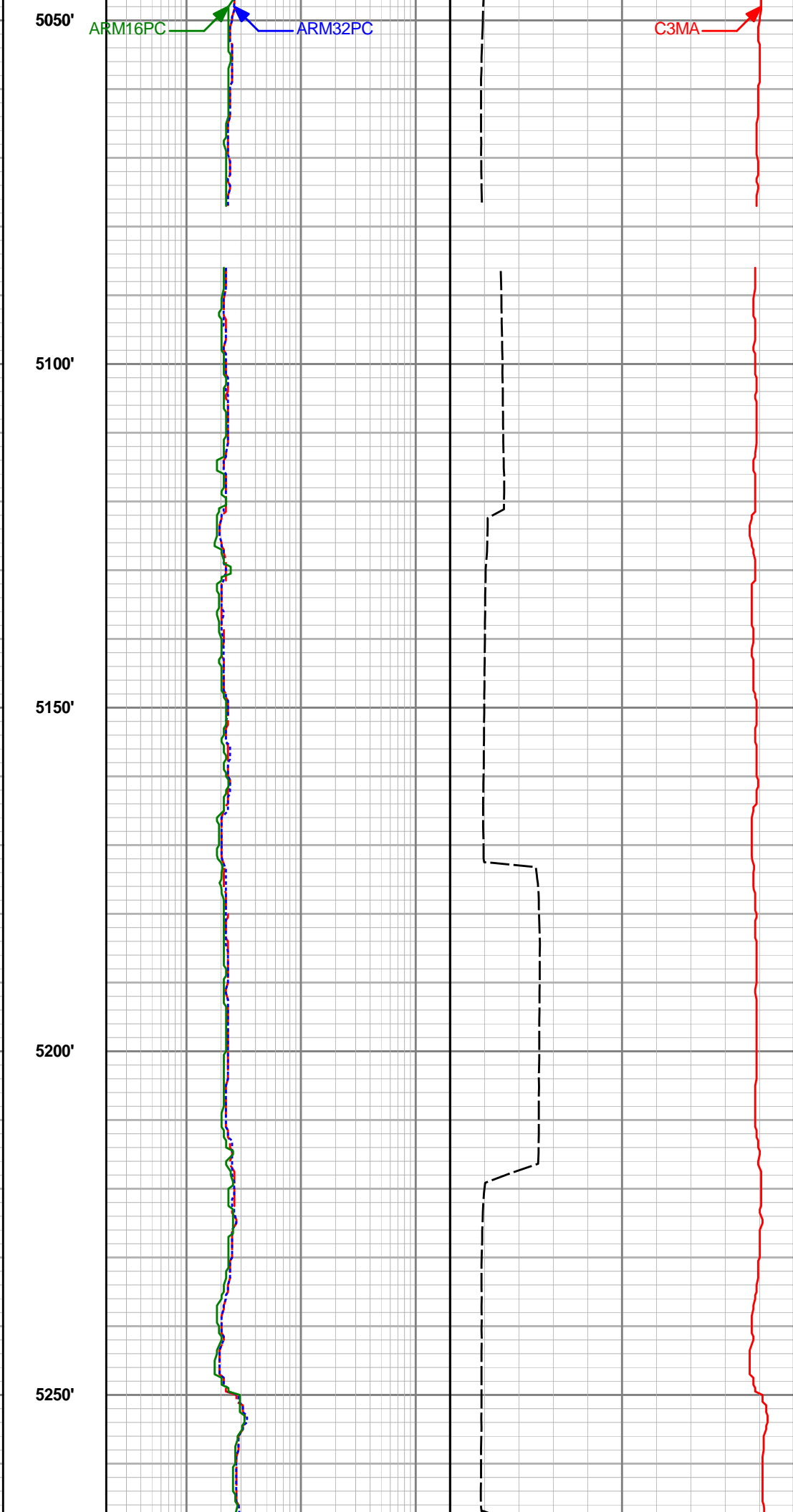
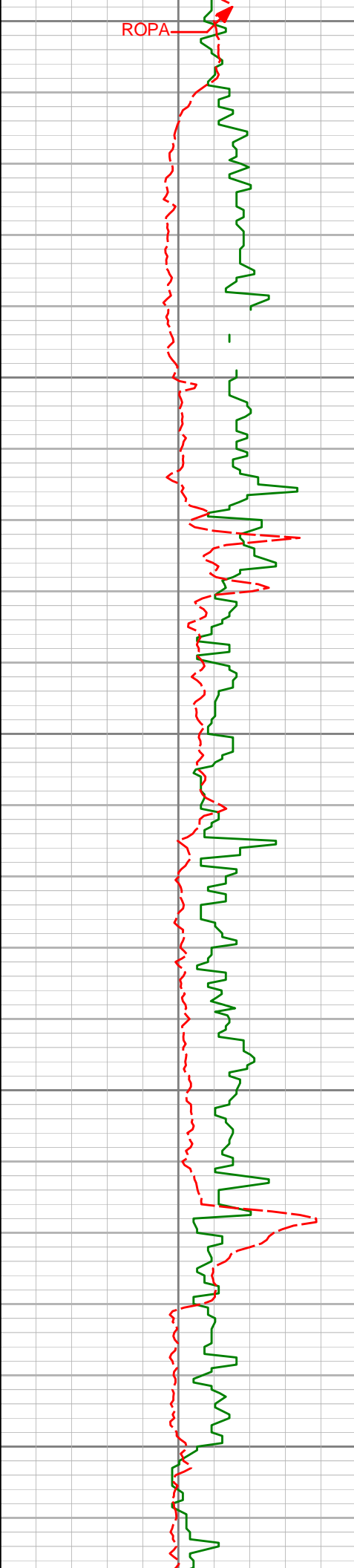
4350'

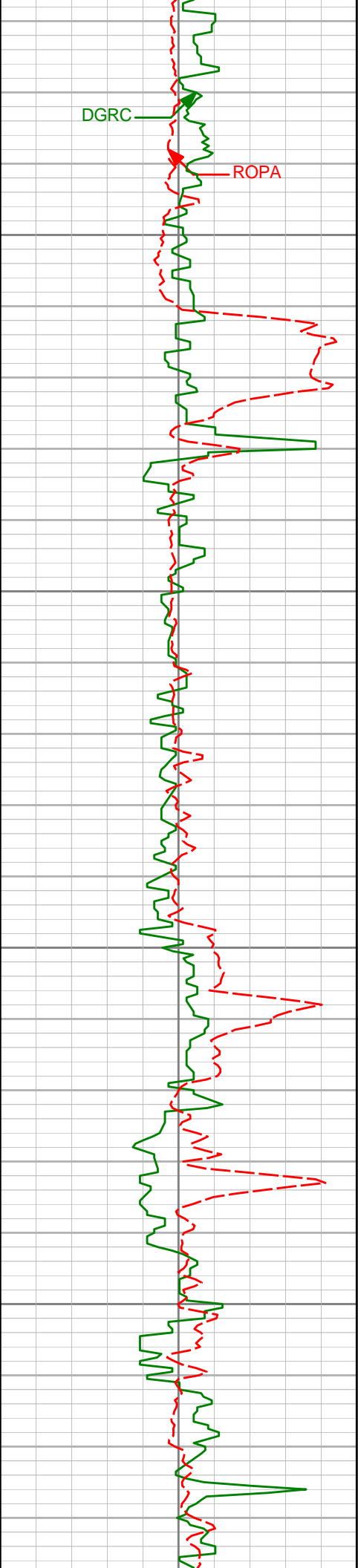










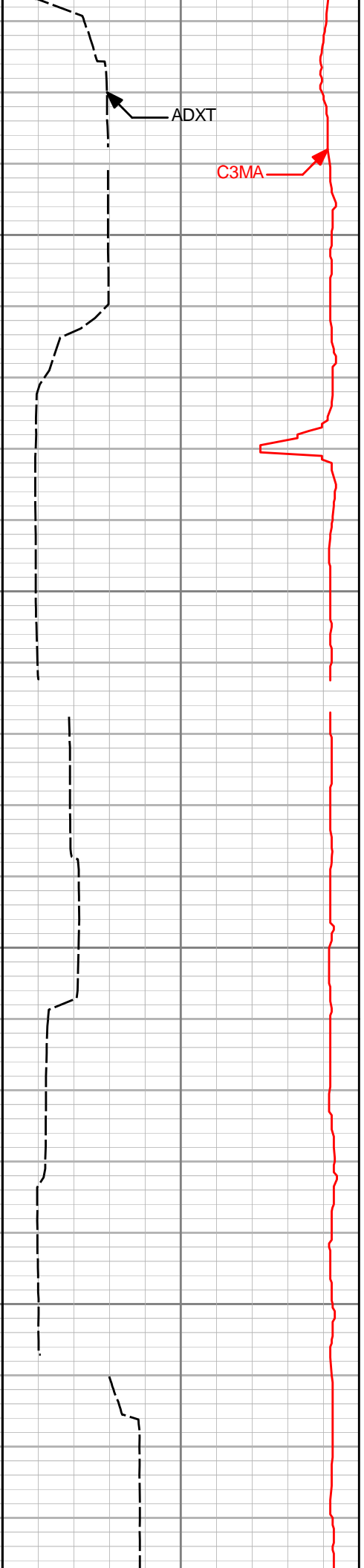
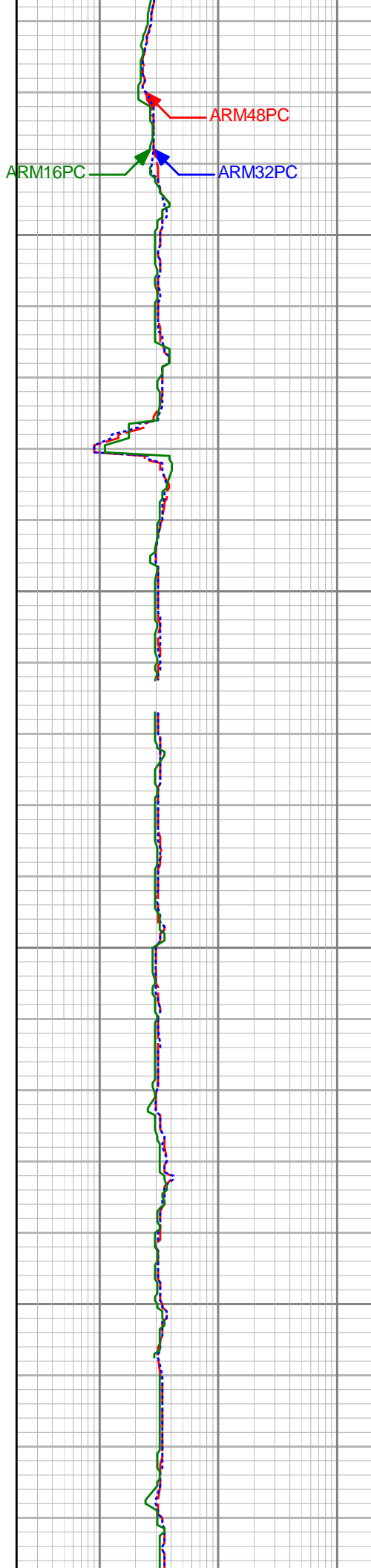


5300'

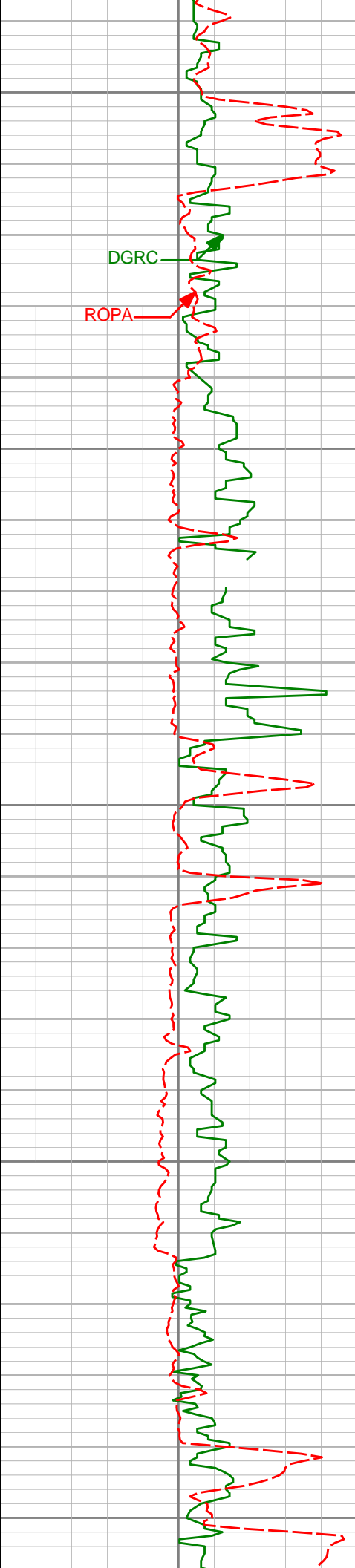
5350'

5400'

5450'







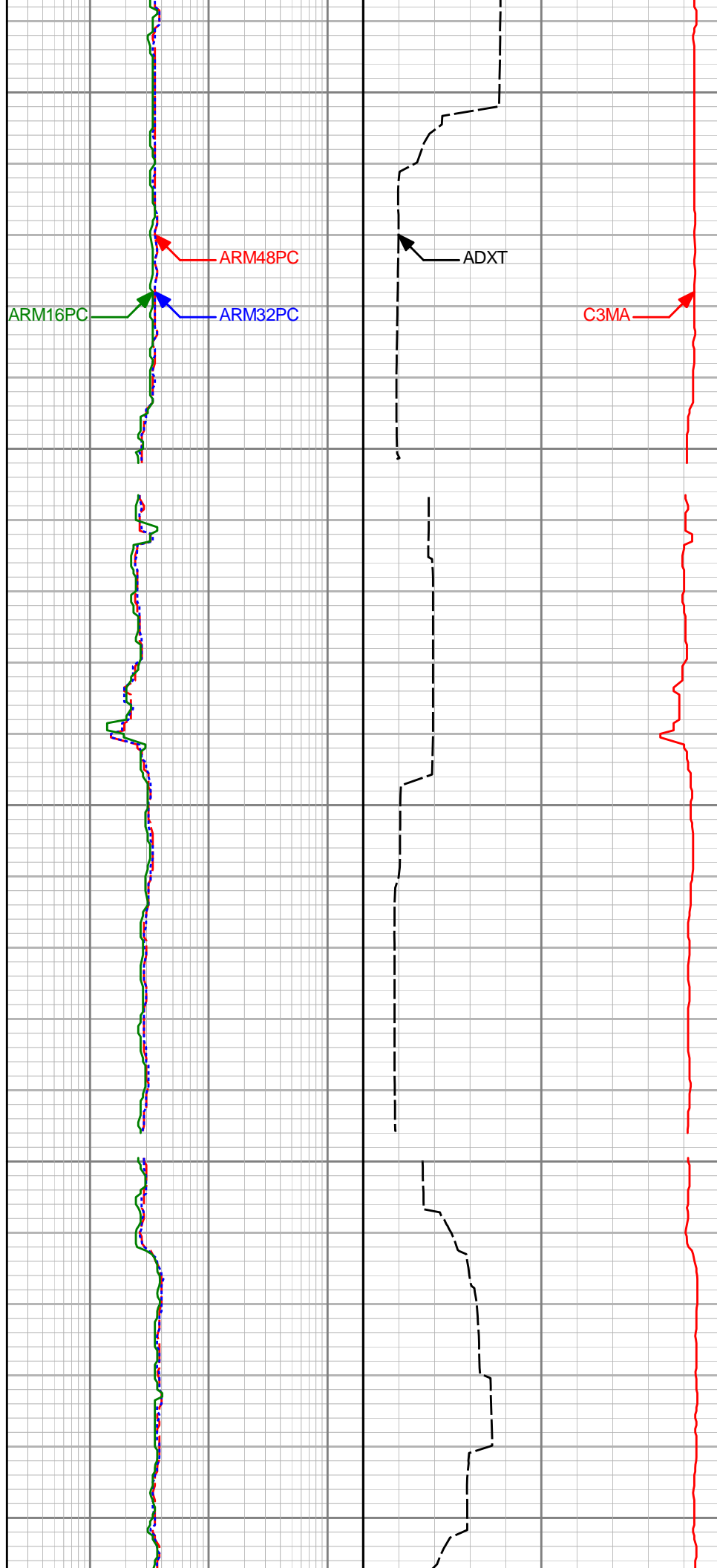
5500'

5550'

5600'

5650'

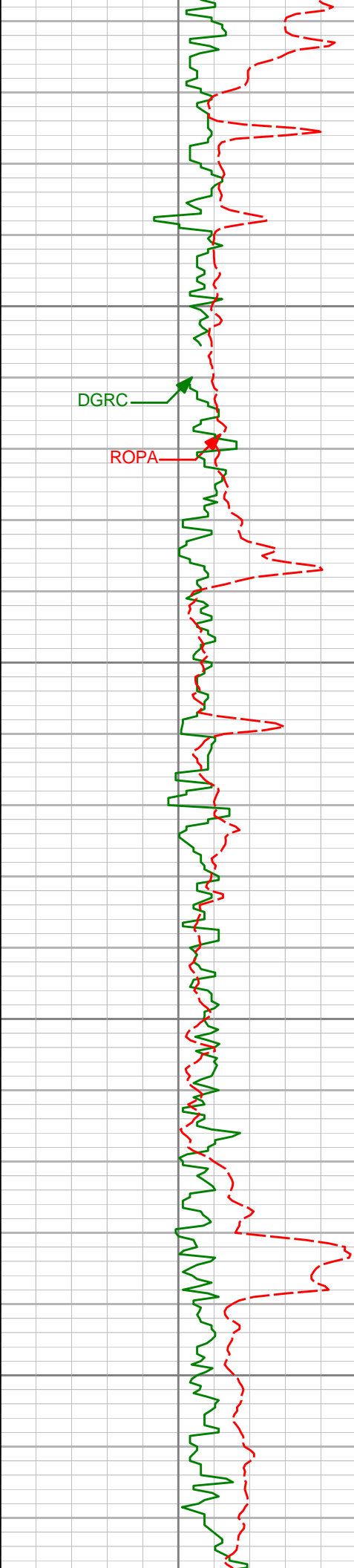
5700'



ARM48PC

ADXT

C3MA

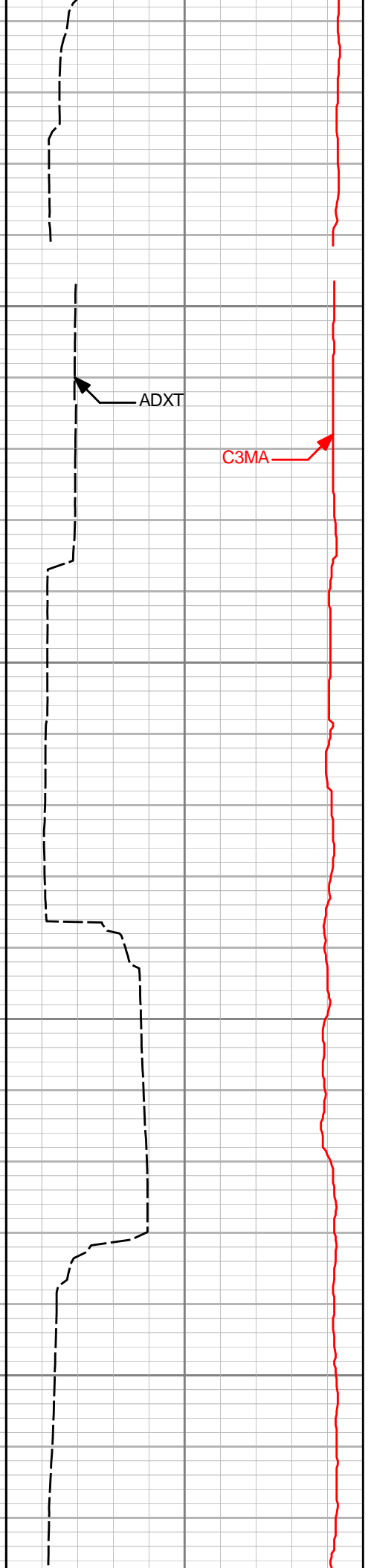
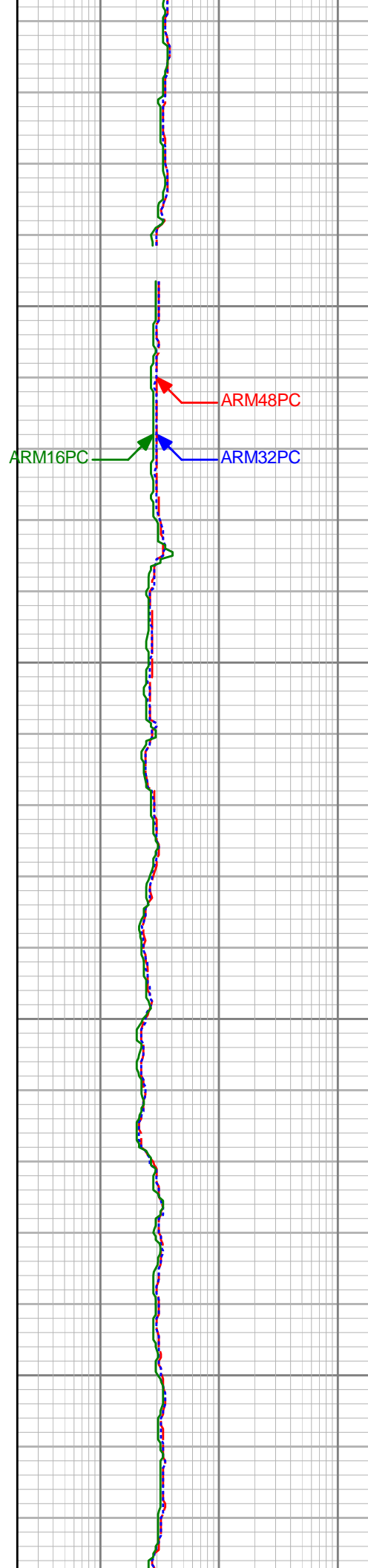


5750'

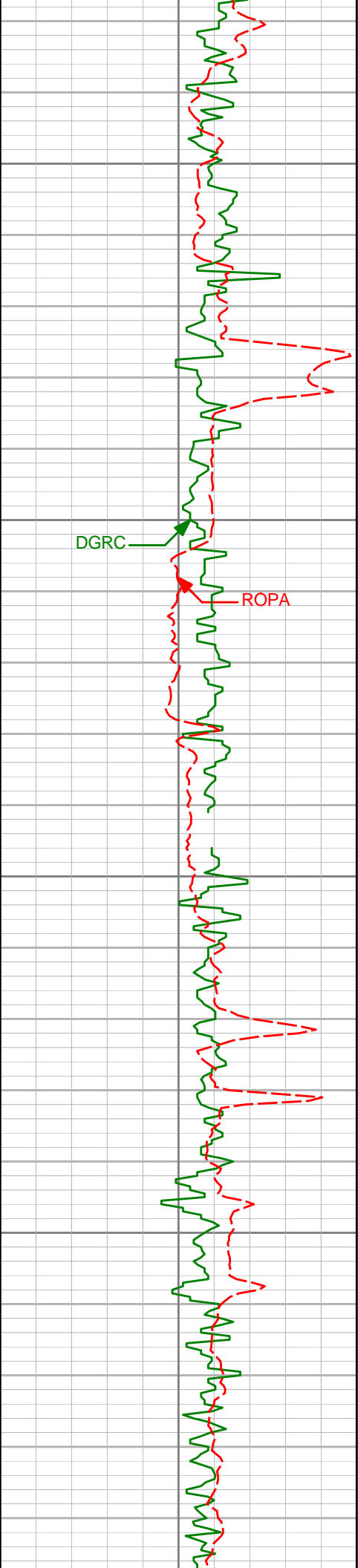
5800'

5850'

5900'



C3MA



5950'

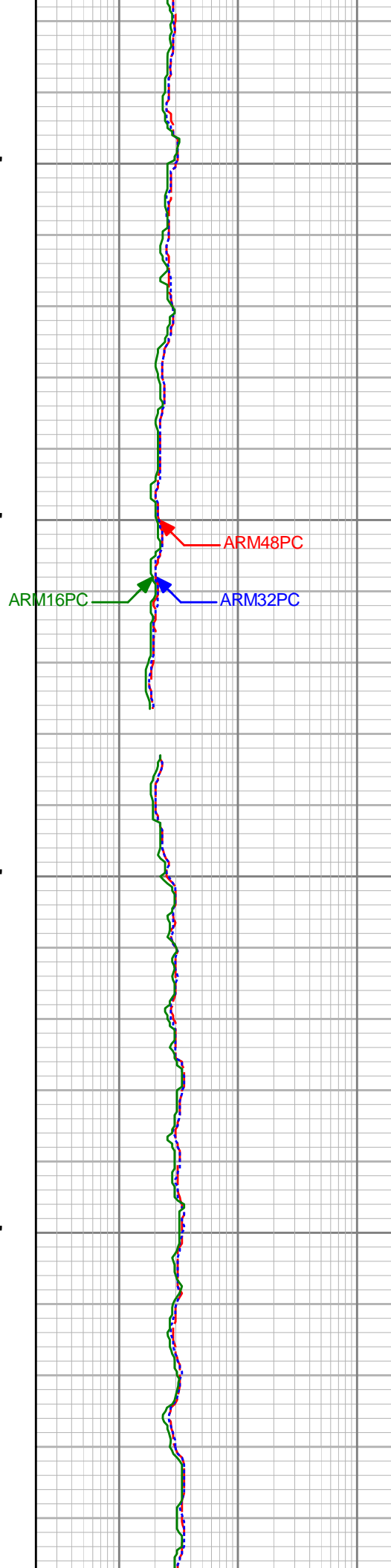
6000'

6050'

6100'

DGRC

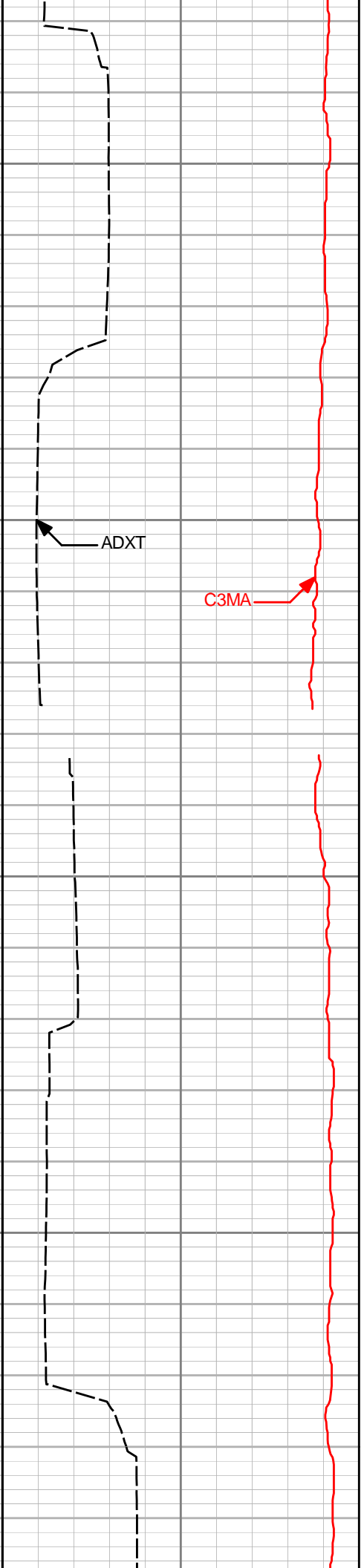
ROPA



ARM48PC

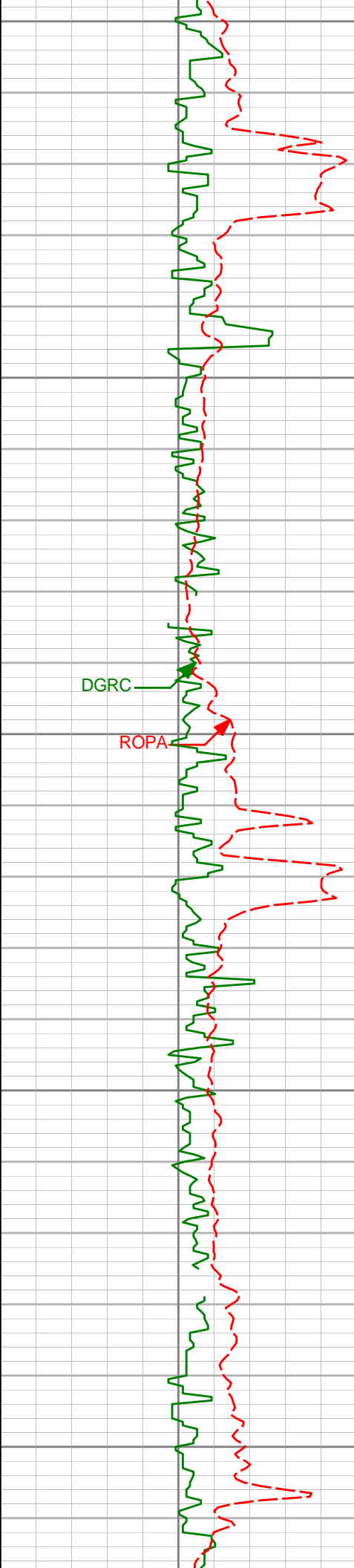
ARM16PC

ARM32PC



ADXT

C3MA



6150'

6200'

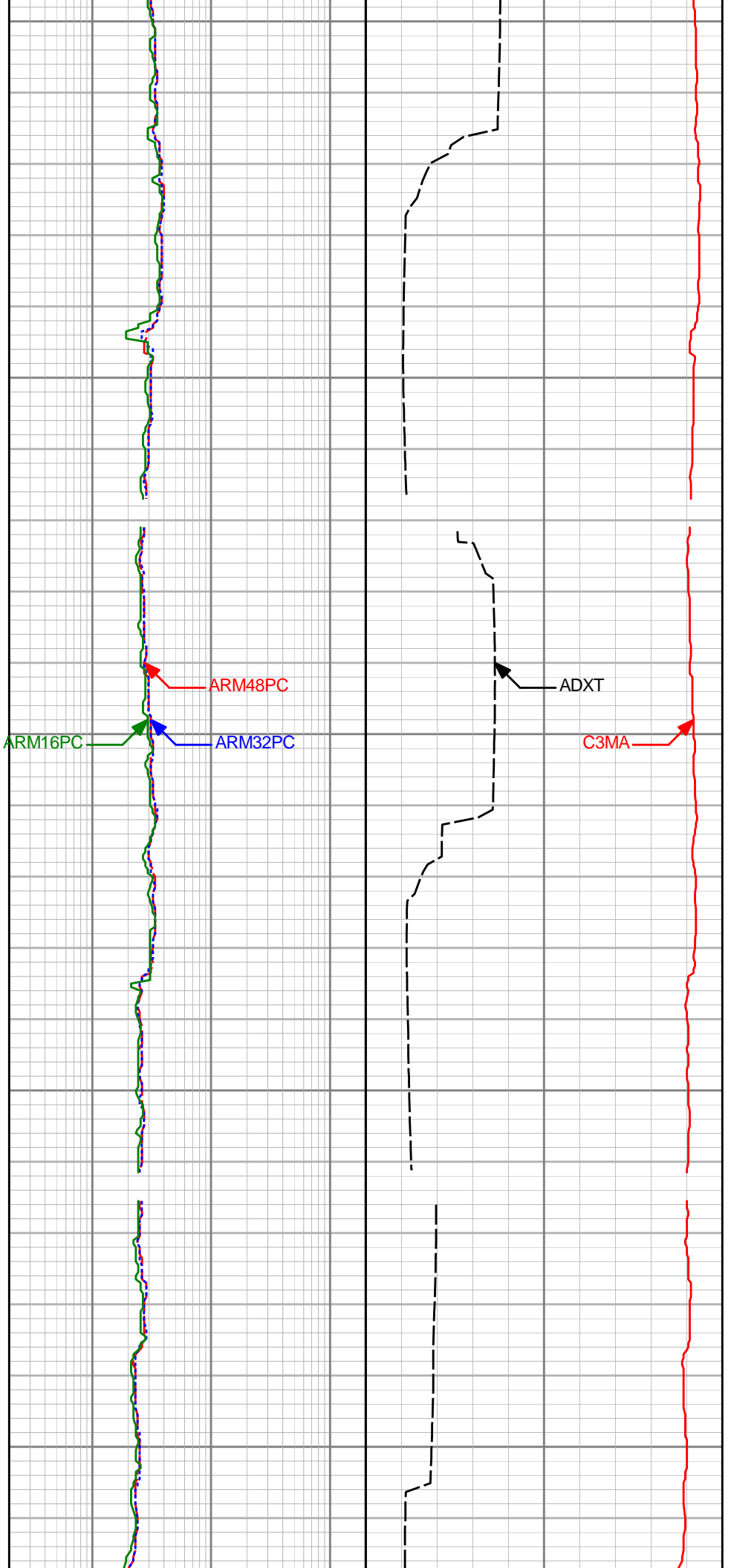
6250'

6300'

6350'

DGRC

ROPA



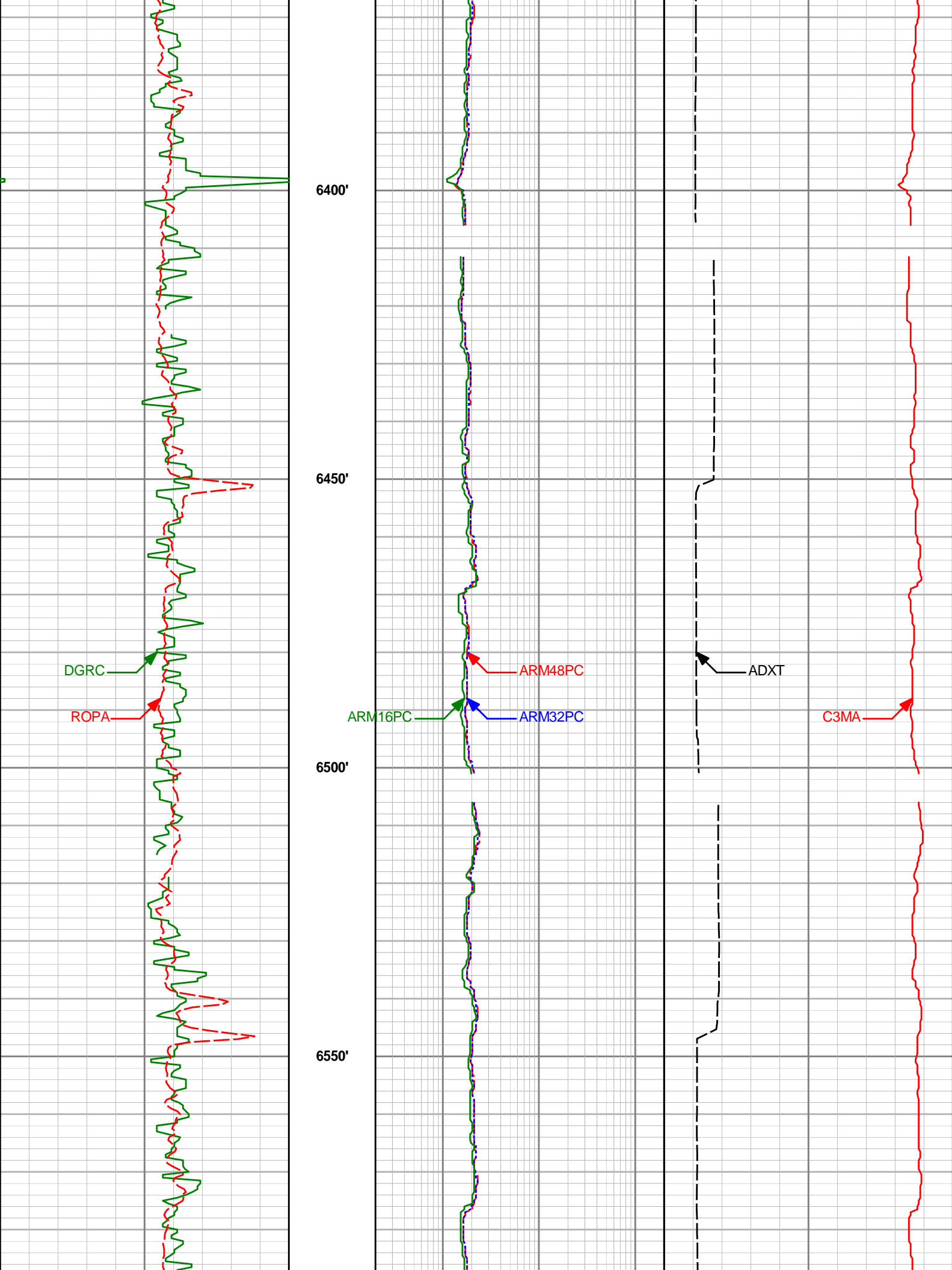
ARM16PC

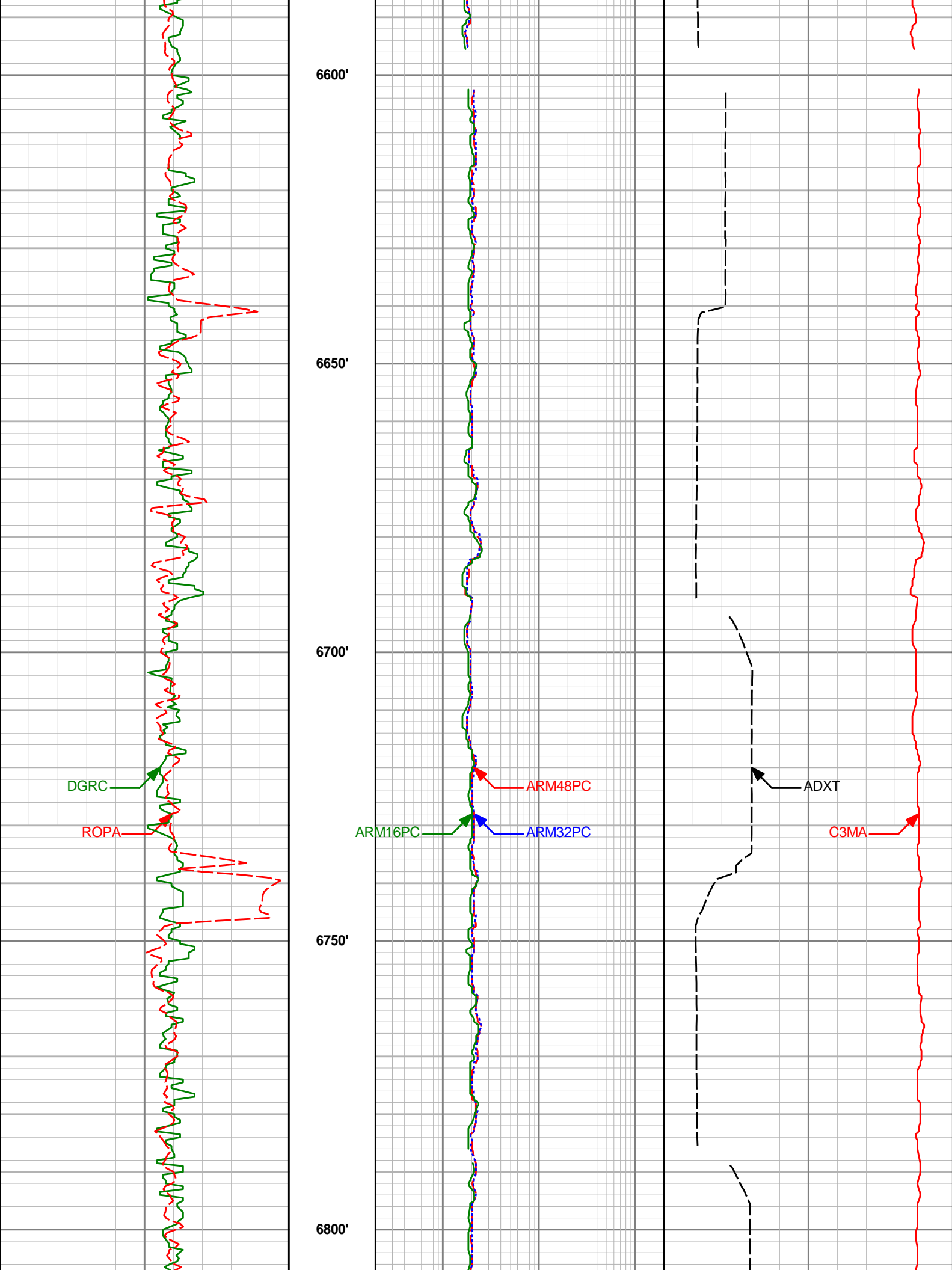
ARM48PC

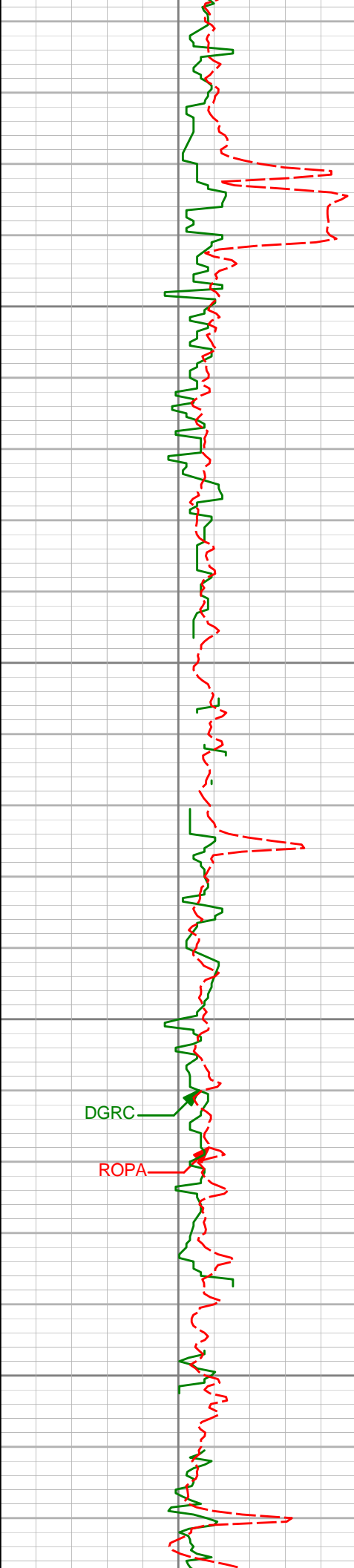
ARM32PC

ADXT

C3MA







6850'

6900'

6950'

7000'

