

---

# **CONOCO/PHILLIPS COMPANY EBUSINESS**

---

**Tebo 29-2H  
WILDCAT  
Arapahoe County , Colorado**

**Cement Surface Casing**  
**07-Feb-2014**

**Job Site Documents**

<b>Field Ticket Number:</b> 901098096	<b>Field Ticket Date:</b> Friday, February 07, 2014
<b>Bill To:</b> CONOCO/PHILLIPS COMPANY EBUSINESS DO NOT MAIL-800 N DAIRY ASHFORD HOUSTON, TX 77079	<b>Job Name:</b> Tebo <b>Order Type:</b> Streamline Order (ZOH) <b>Well Name:</b> Tebo 29-2H <b>Company Code:</b> 1100 <b>Customer PO No.:</b> NA <b>Shipping Point:</b> Fort Lupton, CO, USA <b>Sales Office:</b> Rocky Mountains BD <b>Well Type:</b> Directional Oil <b>Well Category:</b> Development
<b>Ship To:</b> TEBO -29- 2H,ARAPAHOE TEBO -29- 2H 3105548 S 28 T 4S R 64W WATKINS, CO 80137	

Material	Description	QTY	UOM	Base Amt	Unit Amt	Gross Amount	Discount	Net Amount
7521	CMT SURFACE CASING BOM	1	JOB	0.00	0.00	0.00	67%	0.00
2	MILEAGE FOR CEMENTING CREW,ZI	80	MI	0.00	5.76	460.80	67%	152.06
	Number of Units	1						
1	ZI-MILEAGE FROM NEAREST HES BASE,/UNIT	80	MI	0.00	9.79	783.20	67%	258.46
	Number of Units	1						
16091	ZI - PUMPING CHARGE	1	EA	0.00	5,584.00	5,584.00	67%	1,842.72
	DEPTH	2116						
	FEET/METERS (FT/M)		FT					
139	ADC (AUTO DENSITY CTRL) SYS, /JOB,ZI	1	JOB	0.00	2,275.00	2,275.00	67%	750.75
	NUMBER OF UNITS	1						
130104	PORT. DATA ACQUIS. W/OPTICEM RT W/HES	1	EA	0.00	2,549.00	2,549.00	67%	841.17
	DAYS OR PARTIAL DAY(WHOLE NO.)	1						
114	R/A DENSOMETER W/CHART RECORDER,/JOB,ZI	1	JOB	0.00	1,285.00	1,285.00	67%	424.05
	NUMBER OF UNITS	1						
90	ZI QUICK LATCH ATTACHMENT	1	JOB	0.00	616.00	616.00	67%	203.28
	SIZE IN INCHES/MILLIMETER	9.625						
	INCHES/MILLIMETERS (IN/MM)		IN					
74038	ZI PLUG CONTAINER RENTAL-1ST DAY	1	EA	0.00	1,322.00	1,322.00	67%	436.26
	DAYS OR FRACTION (MIN1)	1						
101214575	PLUG,CMTG,TOP,9 5/8,HWE,8.16 MIN/9.06 MA	1	EA	0.00	454.00	454.00	67%	149.82
7	ENVIRONMENTAL CHARGE,/JOB,ZI	1	JOB	0.00	134.00	134.00		134.00
8	IRC,J SAFETY INSPECTION SURCHARGE /JOB ZI	1	JOB	0.00	83.00	83.00		83.00

<b>Field Ticket Number:</b> 901098096	<b>Field Ticket Date:</b> Friday, February 07, 2014
<b>Bill To:</b> CONOCO/PHILLIPS COMPANY EBUSINESS DO NOT MAIL-600 N DAIRY ASHFORD HOUSTON, TX 77079	<b>Job Name:</b> Tebo <b>Order Type:</b> Streamline Order (ZOH) <b>Well Name:</b> Tebo 29-2H <b>Company Code:</b> 1100 <b>Customer PO No.:</b> NA <b>Shipping Point:</b> Fort Lupton, CO, USA <b>Sales Office:</b> Rocky Mountains BD <b>Well Type:</b> Directional Oil <b>Well Category:</b> Development
<b>Ship To:</b> TEBO -29- 2H,ARAPAHOE TEBO -29- 2H 3105548 S 28 T 4S R 64W WATKINS, CO 80137	

Material	Description	QTY	UOM	Base Amt	Unit Amt	Gross Amount	Discount	Net Amount
86954	ZI FUEL SURCHG-CARS/PICKUPS<1 1/2TON	80	MI	0.00	0.24	19.20		19.20
	Number of Units	1						
86955	ZI FUEL SURCHG-HEAVY TRKS >1 1/2 TON	80	MI	0.00	0.72	57.60		57.60
	Number of Units	1						
87605	ZI FUEL SURCHG-CMT & CMT ADDITIVES	40	MI	0.00	0.24	369.22		369.22
	NUMBER OF TONS	38.46						
372867	Cmt PSL - DOT Vehicle Charge, CMT	4	EA	0.00	241.00	964.00		964.00
76400	ZI MILEAGE,CMT MTLs DEL/RET MIN	40	MI	0.00	3.35	5,153.64	67%	1,700.70
	NUMBER OF TONS	38.46						
3965	HANDLE&DUMP SVC CHRG, CMT&ADDITIVES,ZI	852	CF	0.00	5.49	4,677.48	67%	1,543.57
	NUMBER OF EACH	1						
	Unit of Measurement		EA					
452990	SWIFTCEN (TM) SYSTEM	200	SK			12,854.80	67.0%	4,242.08
452990	SWIFTCEN (TM) SYSTEM	470	SK			30,162.74	67.0%	9,953.69
719269	CLEANSPECER III	50	BBL	0.00	250.00	12,500.00	67%	4,125.00
				<b>Totals</b>	<b>USD</b>	<b>82,304.68</b>	<b>54,054.05</b>	<b>28,250.63</b>

Halliburton Rep: MARK DEAN  
 Customer Agent: Wes Evans  
 Halliburton Approval:

## Field Ticket

<b>Field Ticket Number:</b> 901098096		<b>Field Ticket Date:</b> Friday, February 07, 2014	
<b>Bill To:</b> CONOCO/PHILLIPS COMPANY EBUSINESS DO NOT MAIL-600 N DAIRY ASHFORD HOUSTON, TX 77079		<b>Job Name:</b> Tebo <b>Order Type:</b> Streamline Order (ZOH) <b>Well Name:</b> Tebo 29-2H <b>Company Code:</b> 1100 <b>Customer PO No.:</b> NA <b>Shipping Point:</b> Fort Lupton, CO, USA <b>Sales Office:</b> Rocky Mountains BD <b>Well Type:</b> Directional Oil <b>Well Category:</b> Development	
<b>Ship To:</b> TEBO -29- 2H,ARAPAHOE TEBO -29- 2H 3105548 S 28 T 4S R 64W WATKINS, CO 80137			

Material	Description	QTY	UOM	Base Amt	Unit Amt	Gross Amount	Discount	Net Amount
----------	-------------	-----	-----	----------	----------	--------------	----------	------------

THIS OUTPUT DOES NOT INCLUDE TAXES. APPLICABLE SALES TAX WILL BE BILLED ON THE FINAL INVOICE.  
CUSTOMER HEREBY ACKNOWLEDGES RECEIPT OF THE MATERIALS AND SERVICES DESCRIBED ABOVE AND ON THE ATTACHED DOCUMENTS.

X

FIELD TICKET TOTAL: USD

28,250.63

Customer Signature

Was our HSE performance satisfactory? Y or N  
(Health, Safety, Environment)

Were you satisfied with our Equipment? Y or N

Were you satisfied with our people? Y or N

Comments

## Customer Information Only

COP plant code

COP approver/user ID

Network#

Activity code

OLA Number



*The Road to Excellence Starts with Safety*

Sold To #: 352431	Ship To #: 3105548	Quote #:	Sales Order #: 901098096
Customer: CONOCO/PHILLIPS COMPANY EBUSINESS	Customer Rep: Evans, Wes		
Well Name: Tebo	Well #: 29-2H	API/UWI #: 05-005-07209	
Field: WILDCAT	City (SAP): WATKINS	County/Parish: Arapahoe	State: Colorado
Lat: N 39.676 deg. OR N 39 deg. 40 min. 32.43 secs.	Long: W 104.565 deg. OR W -105 deg. 26 min. 7.552 secs.		
Contractor: H&P	Rig/Platform Name/Num: H&P 280		
Job Purpose: Cement Surface Casing			
Well Type: Development Well	Job Type: Cement Surface Casing		
Sales Person: GROFF, THEODORE	Srv Supervisor: DEAN, MARK	MBU ID Emp #: 454214	

**Job Personnel**

HES Emp Name	Exp Hrs	Emp #	HES Emp Name	Exp Hrs	Emp #	HES Emp Name	Exp Hrs	Emp #
BARNES, BRIAN L	16	485204	DEAN, MARK Christophe	16	454214	HARRAH, THADDEUS Gregory	16	552592
MAYFIELD, BYRON L	16	528751	SAUCEDA, JIMMY	16	477592	STIELER, KENT	16	554541

**Equipment**

HES Unit #	Distance-1 way	HES Unit #	Distance-1 way	HES Unit #	Distance-1 way	HES Unit #	Distance-1 way
10679720C	50 mile	10867419C	50 mile	11064535	50 mile	11812069C	50 mile

**Job Hours**

Date	On Location Hours	Operating Hours	Date	On Location Hours	Operating Hours	Date	On Location Hours	Operating Hours
02-07-14	16	8						

**TOTAL** Total is the sum of each column separately

Job				Job Times			
Formation Name	Formation Depth (MD)	Top	Bottom	Called Out	Date	Time	Time Zone
Form Type			BHST	On Location	07 - Feb - 2014	00:00	MST
Job depth MD	2116. ft		Job Depth TVD	Job Started	07 - Feb - 2014	12:27	MST
Water Depth			Wk Ht Above Floor	Job Completed	07 - Feb - 2014	15:00	MST
Perforation Depth (MD)	From		To	Departed Loc	07 - Feb - 2014	17:00	MST

**Well Data**

Description	New / Used	Max pressure psig	Size in	ID in	Weight lbm/ft	Thread	Grade	Top MD ft	Bottom MD ft	Top TVD ft	Bottom TVD ft
13-1/2" Open Hole				13.5				80.	2125.		
16" Casing	Unknown		16.	15.5				.	80.		
9-5/8" Casing	Unknown		9.625	8.921	36.	STC	J-55	.	2125.		

**Sales/Rental/3<sup>rd</sup> Party (HES)**

Description	Qty	Qty uom	Depth	Supplier
CMT SURFACE CASING BOM	0	JOB		
SHOE,FLT,9-5/8 8RD,2-3/4 SUPER SEAL	1	EA		
CLR,FLT,9-5/8 8RD 29.3-40PPF,2-3/4	1	EA		
CENTRALIZER-9-5/8"-CSG-12 1/4"-HINGED	25	EA		
COLLAR-STOP-9 5/8"-FRICTION-HINGED	1	EA		
KIT,HALL WELD-A	1	EA		
MILEAGE FOR CEMENTING CREW,ZI	100	MI		

**Tools and Accessories**

Type	Size	Qty	Make	Depth	Type	Size	Qty	Make	Depth	Type	Size	Qty	Make
Guide Shoe					Packer					Top Plug			
Float Shoe				2116	Bridge Plug					Bottom Plug			



Float Collar				2074	Retainer					SSR plug set			
Insert Float										Plug Container			
Stage Tool										Centralizers			
<b>Miscellaneous Materials</b>													
Gelling Agt		Conc		Surfactant		Conc		Acid Type		Qty		Conc	%
Treatment Fld		Conc		Inhibitor		Conc		Sand Type		Size		Qty	
<b>Fluid Data</b>													
<b>Stage/Plug #: 1</b>													
Fluid #	Stage Type	Fluid Name			Qty	Qty uom	Mixing Density lbm/gal	Yield ft <sup>3</sup> /sk	Mix Fluid Gal/sk	Rate bbl/min	Total Mix Fluid Gal/sk		
1	SwiftCem B2	SWIFTCM (TM) SYSTEM (452990)			470	sacks	12.	2.56	15.09		15.09		
	15.086 Gal	FRESH WATER											
2	SwiftCem B2	SWIFTCM (TM) SYSTEM (452990)			200	sacks	13.	2.01	10.99		10.99		
	10.989 Gal	FRESH WATER											
3	CS-3 SPACER	CS-3 SPACER (NO SAP# - LOCAL PRICING) (45)			50	bbl	10.5	3.86	24.21	.0			
	0 gal/bbl	FRESH WATER											
	1.528 lbm/bbl	SA-1015, 50 LB SACK (102077046)											
	145.456 lbm/bbl	SAND-SSA-1 - SILICA FLOUR - 200 MESH, BULK (100003691)											
<b>Calculated Values</b>		<b>Pressures</b>			<b>Volumes</b>								
Displacement	160	Shut In: Instant			Lost Returns	0	Cement Slurry	275	Pad				
Top Of Cement	surf	5 Min			Cement Returns	100	Actual Displacement	160	Treatment				
Frac Gradient		15 Min			Spacers	50	Load and Breakdown		Total Job	485			
<b>Rates</b>													
Circulating	8	Mixing			5	Displacement	7	Avg. Job	6				
Cement Left In Pipe	Amount	42 ft	Reason	Shoe Joint									
Frac Ring # 1 @	ID	Frac ring # 2 @	ID	Frac Ring # 3 @	ID	Frac Ring # 4 @	ID						
<b>The Information Stated Herein Is Correct</b>					Customer Representative Signature								

*The Road to Excellence Starts with Safety*

<b>Sold To #:</b> 352431	<b>Ship To #:</b> 3105548	<b>Quote #:</b>	<b>Sales Order #:</b> 901098096
<b>Customer:</b> CONOCO/PHILLIPS COMPANY EBUSINESS		<b>Customer Rep:</b> Evans, Wes	
<b>Well Name:</b> Tebo		<b>Well #:</b> 29-2H	<b>API/UWI #:</b> 05-005-07209
<b>Field:</b> WILDCAT	<b>City (SAP):</b> WATKINS	<b>County/Parish:</b> Arapahoe	<b>State:</b> Colorado
<b>Legal Description:</b>			
<b>Lat:</b> N 39.676 deg. OR N 39 deg. 40 min. 32.43 secs.		<b>Long:</b> W 104.565 deg. OR W -105 deg. 26 min. 7.552 secs.	
<b>Contractor:</b> H&P		<b>Rig/Platform Name/Num:</b> H&P 280	
<b>Job Purpose:</b> Cement Surface Casing			<b>Ticket Amount:</b>
<b>Well Type:</b> Development Well		<b>Job Type:</b> Cement Surface Casing	
<b>Sales Person:</b> GROFF, THEODORE		<b>Srvc Supervisor:</b> DEAN, MARK	<b>MBU ID Emp #:</b> 454214

Activity Description	Date/Time	Cht #	Rate bbl/ min	Volume bbl		Pressure psig		Comments
				Stage	Total	Tubing	Casing	
Call Out	02/06/2014 18:00							Crew Called Out @ 18:00
Pre-Convoy Safety Meeting	02/06/2014 22:00							Discussed Planned Route, Equipment Checks & Safe Driving
Depart from Service Center or Other Site	02/06/2014 22:30							Departed Yard in Convoy
Arrive at Location from Service Center	02/07/2014 00:00							Pulled Equipment Off the Road to Inspect Site.
Wait on Customer or Customer Sub-Contractor Equip	02/07/2014 00:00							Mud Line Frozen upon arrival. Waiting on Casing Crew to Finish Running.
Wait on Customer or Customer Sub-Contractor Equipm	02/07/2014 09:15							Rig Crew moved racks and made way for HES Equipment. Rig Started circulating @ 8 BPM
Assessment Of Location Safety Meeting	02/07/2014 09:15							Discussed Layout & Spotting Equipment
Pre-Rig Up Safety Meeting	02/07/2014 09:20							Discussed PPE, Red Zones, Working in the Snow & Other Hazards
Rig-Up Equipment	02/07/2014 09:30							Rigged up Safely to Customer & HES Standards
Pre-Job Safety Meeting	02/07/2014 12:05							Discussed Job Procedure & Safety Concerns with Customer & Crew
Test Lines	02/07/2014 12:29							Tested Lines to 2000 psi (Pressure Held) Reset KO's to 800psi
Pump Spacer	02/07/2014 12:38		5	50	50		150.0	Pumped 50 BBL Clean Spacer (10.5#)
Shutdown	02/07/2014 12:50							Shutdown to drop Bottom Plug

Sold To # : 352431

Ship To # :3105548

Quote # :

Sales Order # : 901098096

SUMMIT Version: 7.3.0109

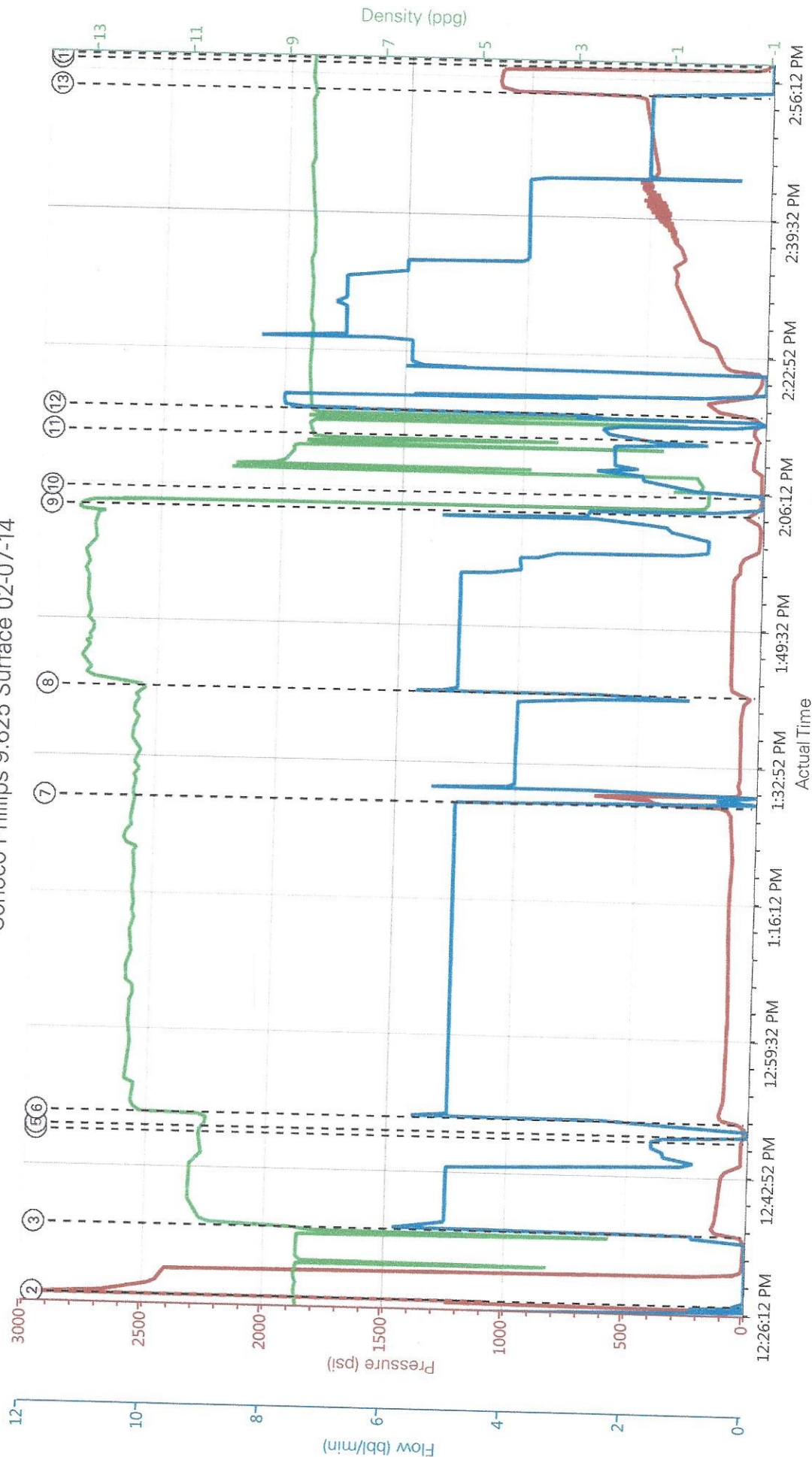
Friday, February 07, 2014 04:27:00



Activity Description	Date/Time	Cht #	Rate bbl/min	Volume bbl		Pressure psig		Comments
				Stage	Total	Tubing	Casing	
Drop Bottom Plug	02/07/2014 12:51							Tattle tell opened. Plug left head.
Pump Lead Cement	02/07/2014 12:51		5	214	214		100.0	Pumped 214 BBL Lead CMT @ D: 12# Y: 2.56 W: 15.09 (470 sks)
Pump Tail Cement	02/07/2014 13:44		5	72	72		100.0	Pumped 72 BBL Tail CMT @ D: 13# Y: 2.01 W: 10.99 (200 sks)
Shutdown	02/07/2014 14:06							Shutdown to Drop Plug
Drop Plug	02/07/2014 14:07							Tattle Tell Opened. Plug Left Head
Clean Lines	02/07/2014 14:08							Cleaned Lines to pit
Pump Displacement	02/07/2014 14:17		7	0	160.3		185.0	Pumped 160.3 BBL of fresh water Displacement
Displ Reached Cmnt	02/07/2014 14:30		7	60	160.3		320.0	Caught Plug @ 60 bbl away.
Cement Returns to Surface	02/07/2014 14:30		7	60	160.3		320.0	100 BBL Total Cement Returned to Surface
Slow Rate	02/07/2014 14:55		2	140	160.3		500.0	Slowed Rate to 2 BPM @ 140 gone to Land Plug
Bump Plug	02/07/2014 14:57							Bumped Plug @ 500psi. 500 psi over to 1000psi
Check Floats	02/07/2014 14:59							1 BBL back to Truck
Pre-Rig Down Safety Meeting	02/07/2014 15:05							Discussed Trapped Pressure, Overhead Loads, & Other Hazards.
Rig-Down Equipment	02/07/2014 15:10							Rigged Down Safely to Customer & HES Standards.
Pre-Convoy Safety Meeting	02/07/2014 16:45							Discussed Safe Driving.
Depart Location for Service Center or Other Site	02/07/2014 17:00							Thankyou for Chosing Halliburton!



# Conoco Phillips 9.625 Surface 02-07-14



PS Pump Press (psi) DH Density (ppg) Comb Pump Rate (bbl/min)

- ① Start Job 4;3.66;0.9
- ② Test Lines 2641;8.34;0
- ③ Pump Spacer 1 140;10.14;5.5
- ④ Shutdown 21;10.38;0
- ⑤ Drop Bottom Plug 10;10.27;0
- ⑥ Pump Lead Cement 118;11.74;5
- ⑦ Rupture Disc 424;11.97;0
- ⑧ Pump Tail Cement 97;12.28;5
- ⑨ Shutdown 45;12.89;0
- ⑩ Clean Lines 8;0.13;0
- ⑪ Drop Top Plug 42;8.41;2.6
- ⑫ Pump Displacement 191;8.44;8
- ⑬ Bump Plug 1119;8.55;0
- ⑭ Check Floats 12;8.52;0
- ⑮ End Job 8;8.49;0

► **HALLIBURTON** | iCem® Service

Customer: CONOCO PHILLIPS  
Representative: Wes Evans

Job Date : 2/7/2014 9:51:29 AM  
Sales Order # : 901098096

Well : 29-2H  
Red Tiger#: 11812069