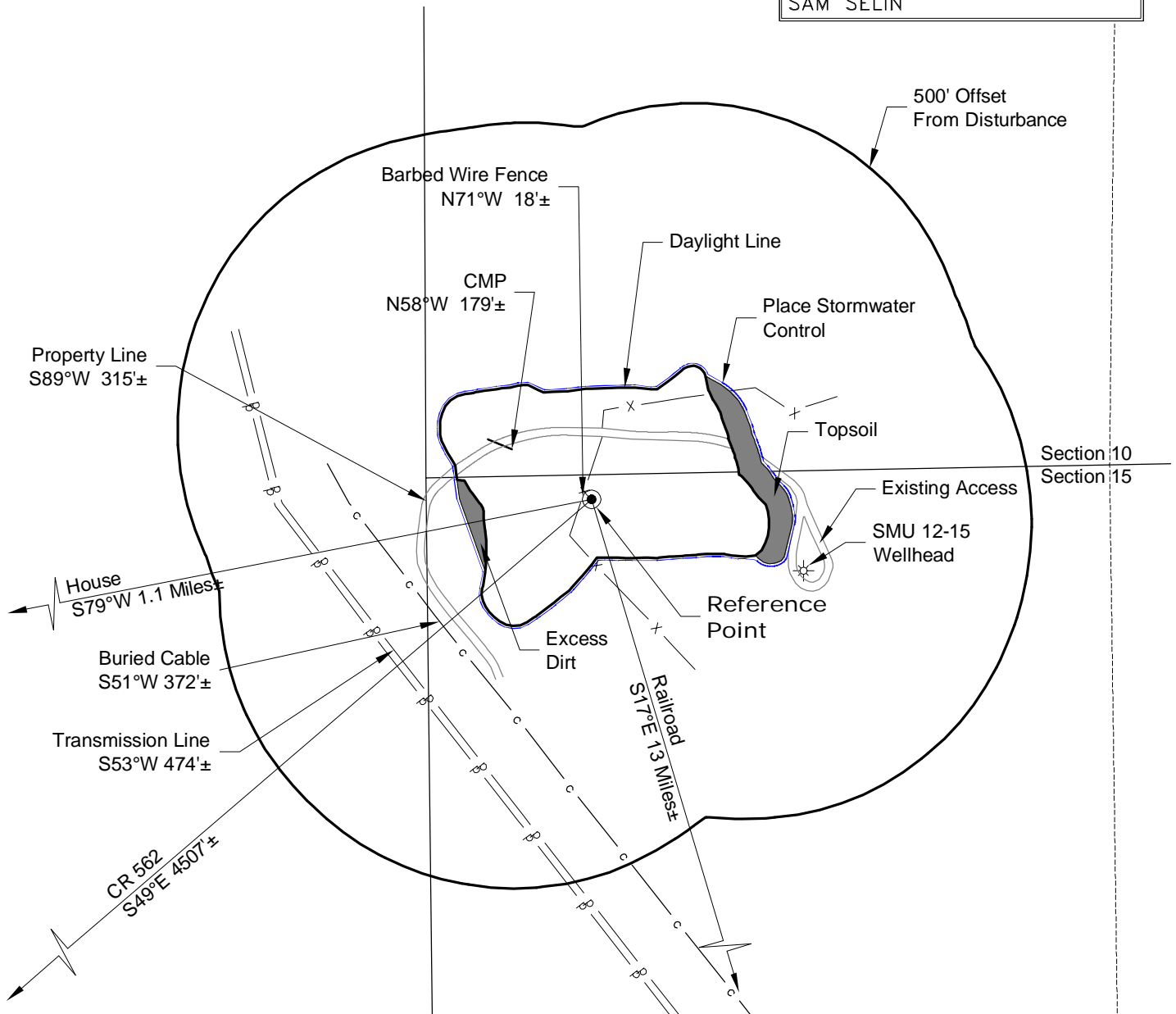


PLANT COMMUNITY:
 EVERGREEN
 ASPEN
 SCRUB OAK
 SAGEBRUSH

LOCATION DRAWING

REFERENCE POINT

LATITUDE: 37.70753
LONGITUDE: -105.21517
FOOTAGE: 47 FNL 315 FWL
GROUND ELEVATION: 8565.0
PDOP: 2.3 DATE: 12/5/2013
INSTRUMENT OPERATOR: SAM SELIN



DISTURBANCE ACREAGE:
 6.1± DRILLING OPERATIONS

2/13/14



North

0 300 600

Graphic Scale in Feet
 1" = 300'



LAND SURVEYING AND MAPPING
 LAFAYETTE - WINTER PARK
 Ph 303 666 0379 Fx 303 665 6320

OXY PERMIAN
SMU 8-15-D PAD

NW1/4 NW1/4 SECTION 15 T27S R70W
6th PM HUERFANO COUNTY COLORADO