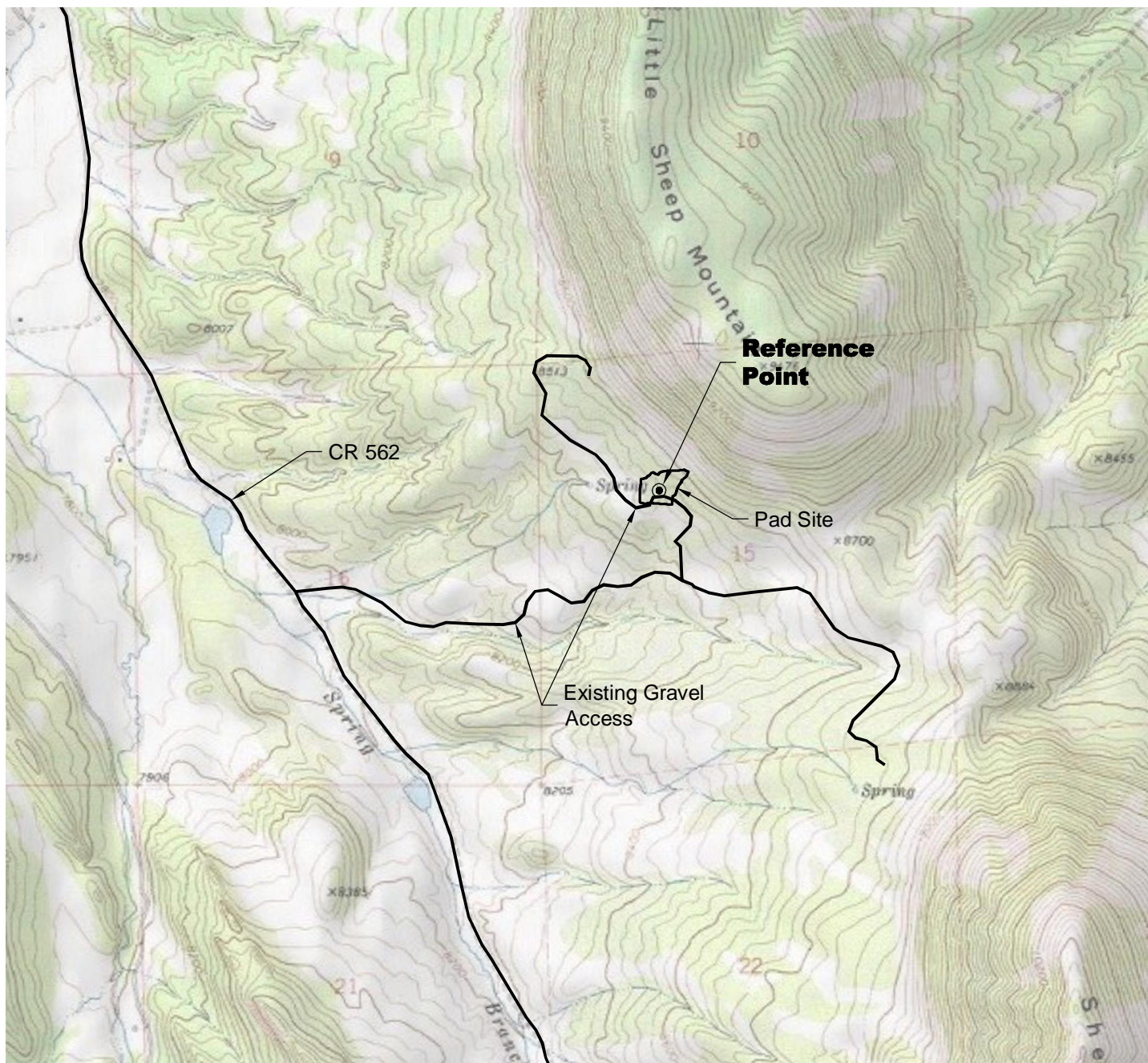


ACCESS ROAD MAP

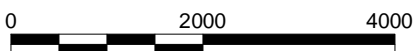


DRIVING DIRECTIONS:

MP 0.0 - Intersection of Highway 69 & CR 550; West on CR 550
MP 0.1 - First Left on CR 560
MP 6.3 - Continue South on CR 562
MP 8.0 - Left on Existing Gravel Access
MP 9.1 - Take First Left on Existing Gravel Access
MP 9.3 - SMU 7-15-I Pad on Right



North



Graphic Scale in Feet
1" = 2000'



LAND SURVEYING AND MAPPING
LAFAYETTE - WINTER PARK
Ph 303 666 0379 Fx 303 665 6320

OXY PERMIAN
SMU 7-15-1 PAD

SE1/4 NW1/4 SECTION 15 T27S R70W
6th PM HUERFANO COUNTY COLORADO

2/13/14