

# BONANZA CREEK OIL COMPANY

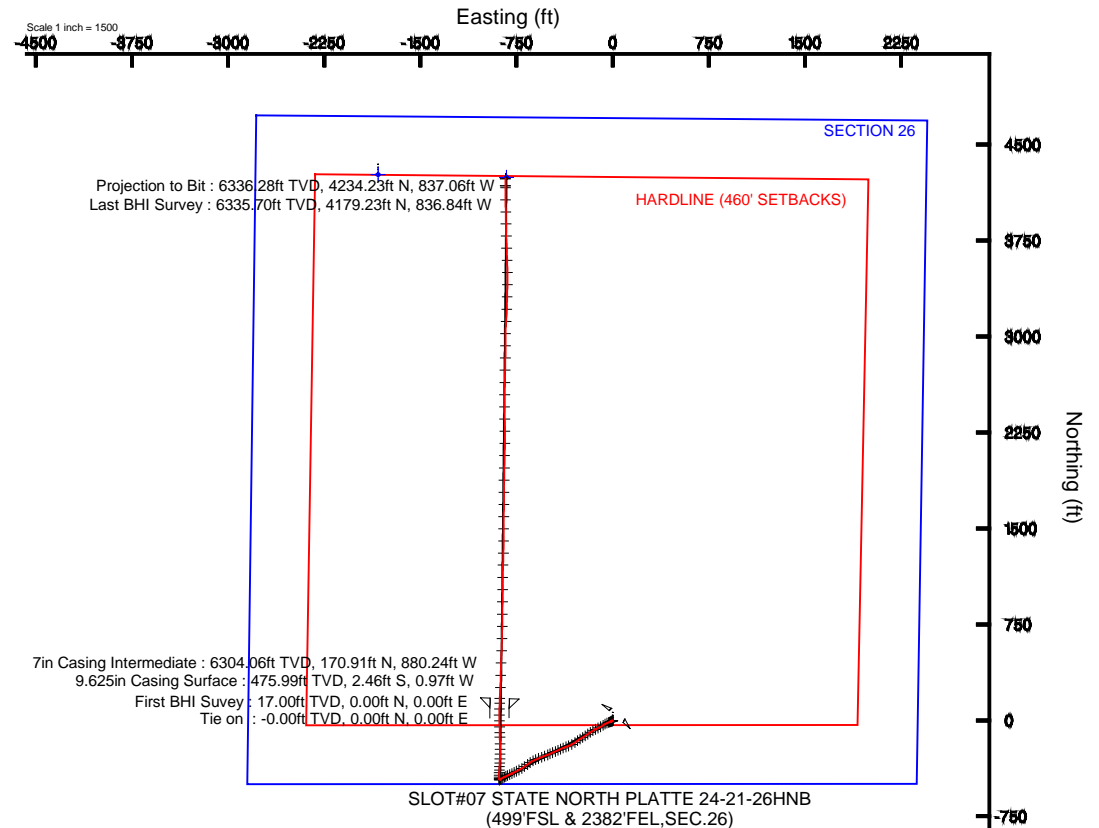
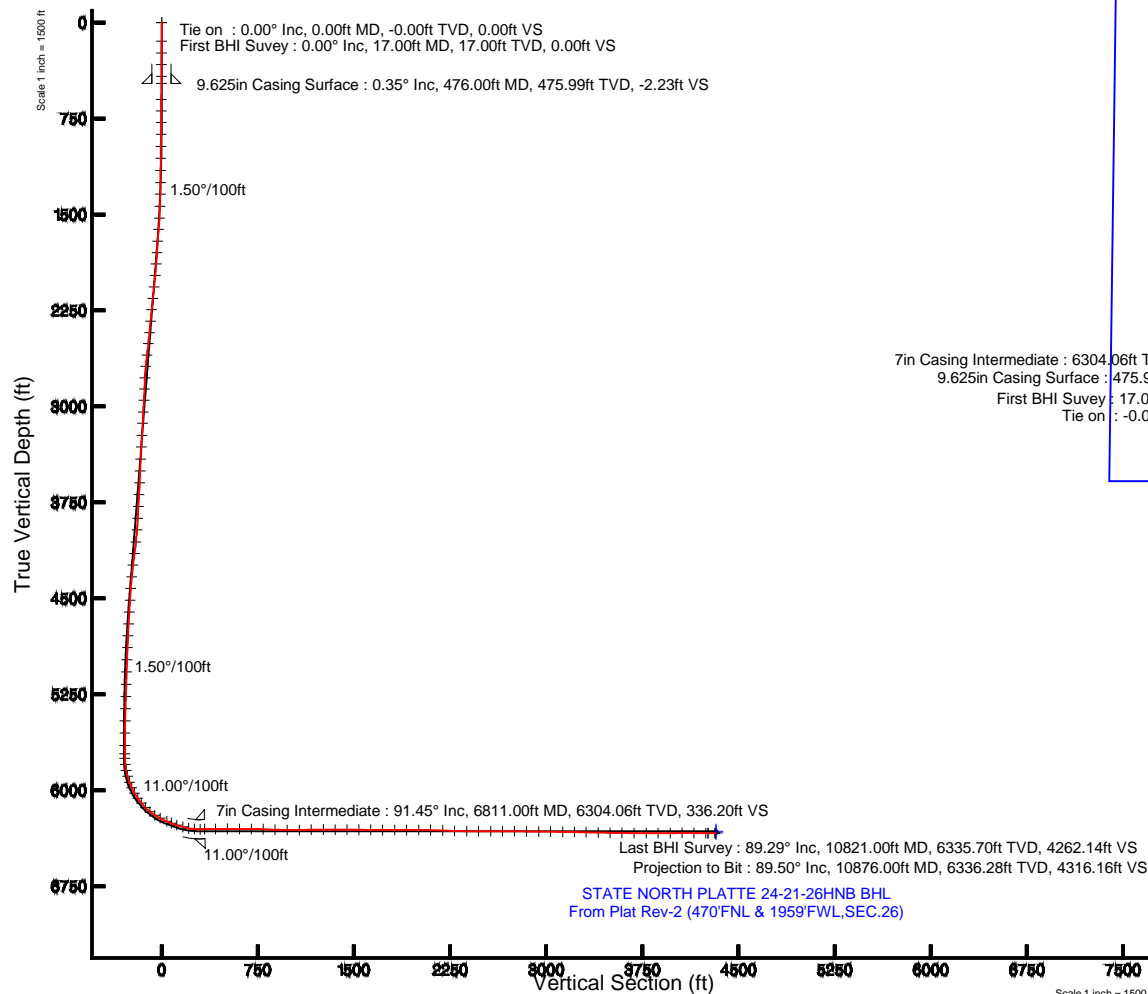
Location: COLORADO Slot: SLOT#07 STATE NORTH PLATTE 24-21-26HNB (499'FSL & 2382'FEL, SEC.26)  
Field: WELD COUNTY Well: STATE NORTH PLATTE 24-21-26HNB  
Facility: SEC.26-T5N-R63W Wellbore: STATE NORTH PLATTE 24-21-26HNB PWB

Plot reference wellpath is STATE NORTH PLATTE 24-21-26HNB (REV-B-1) PWP

True vertical depths are referenced to CADE 22 (RKB)	Grid System: NAD83 / Lambert Colorado SP, Northern Zone (501), US feet
Measured depths are referenced to CADE 22 (RKB)	North Reference: True north
CADE 22 (RKB) to Mean Sea Level: 4567 feet	Scale: True distance
Mean Sea Level to Mud line (At Slot: SLOT#07 STATE NORTH PLATTE 24-21-26HNB (499'FSL & 2382'FEL, SEC.26)): 0 feet	Depths are in feet
Coordinates are in feet referenced to Slot	Created by: guenaler on 2/28/2014

## Location Information

Facility Name			Grid East (US ft)	Grid North (US ft)	Latitude	Longitude
SEC.26-T5N-R63W			3303950.838	1381774.536	40°22'34.464"N	104°24'32.438"W
Slot	Local N (ft)	Local E (ft)	Grid East (US ft)	Grid North (US ft)	Latitude	Longitude
SLOT#07 STATE NORTH PLATTE 24-21-26HNB (499'FSL & 2382'FEL, SEC.26)	-4266.00	1830.85	3305583.952	1377531.561	40°21'52.308"N	104°24'08.784"W
CADE 22 (RKB) to Mud line (At Slot: SLOT#07 STATE NORTH PLATTE 24-21-26HNB (499'FSL & 2382'FEL, SEC.26))					4567ft	
Mean Sea Level to Mud line (At Slot: SLOT#07 STATE NORTH PLATTE 24-21-26HNB (499'FSL & 2382'FEL, SEC.26))					0ft	
CADE 22 (RKB) to Mean Sea Level					4567ft	



BGCM (1945.0 to 2014.0) Dip: 66.96° Field: 52780.8 nT  
Magnetic North is 8.41 degrees East of True North (at 11/15/2013)

To correct azimuth from Magnetic to True add 8.41 degrees

Scale 1 inch = 1500 ft



# Actual Wellpath Report

## STATE NORTH PLATTE 24-21-26HNB AWP

Page 1 of 7



### REFERENCE WELLPATH IDENTIFICATION

Operator	BONANZA CREEK OIL COMPANY	Slot	SLOT#07 STATE NORTH PLATTE 24-21-26HNB (499'FSL & 2382'FEL,SEC.26)
Area	COLORADO	Well	STATE NORTH PLATTE 24-21-26HNB
Field	WELD COUNTY	Wellbore	STATE NORTH PLATTE 24-21-26HNB AWB
Facility	SEC.26-T5N-R63W		

### REPORT SETUP INFORMATION

Projection System	NAD83 / Lambert Colorado SP, Northern Zone (501), US feet	Software System	WellArchitect® 4.0.0
North Reference	True	User	Guenaler
Scale	0.999959	Report Generated	2/28/2014 at 4:16:22 PM
Convergence at slot	n/a	Database/Source file	WA_Denver/STATE_NORTH_PLATTE_24-21-26HNB_AWB.xml

### WELLPATH LOCATION

	Local coordinates		Grid coordinates		Geographic coordinates	
	North[ft]	East[ft]	Easting[US ft]	Northing[US ft]	Latitude	Longitude
Slot Location	-4266.00	1830.85	3305833.95	1377531.56	40°21'52.308"N	104°24'08.784"W
Facility Reference Pt			3303950.84	1381774.54	40°22'34.464"N	104°24'32.436"W
Field Reference Pt			3327718.19	1377782.99	40°21'52.020"N	104°19'26.040"W

### WELLPATH DATUM

Calculation method	Minimum curvature	CADE 22 (RKB) to Facility Vertical Datum	4567.00ft
Horizontal Reference Pt	Slot	CADE 22 (RKB) to Mean Sea Level	4567.00ft
Vertical Reference Pt	CADE 22 (RKB)	CADE 22 (RKB) to Mud Line at Slot (SLOT#07 STATE NORTH PLATTE 24-21-26HNB (499'FSL & 2382'FEL,SEC.26))	4567.00ft
MD Reference Pt	CADE 22 (RKB)	Section Origin	N 0.00, E 0.00 ft
Field Vertical Reference	Mean Sea Level	Section Azimuth	348.82°



# Actual Wellpath Report

## STATE NORTH PLATTE 24-21-26HNB AWP

Page 2 of 7



### REFERENCE WELLPATH IDENTIFICATION

Operator	BONANZA CREEK OIL COMPANY	Slot	SLOT#07 STATE NORTH PLATTE 24-21-26HNB (499'FSL & 2382'FEL,SEC.26)
Area	COLORADO	Well	STATE NORTH PLATTE 24-21-26HNB
Field	WELD COUNTY	Wellbore	STATE NORTH PLATTE 24-21-26HNB AWP
Facility	SEC.26-T5N-R63W		

### WELLPATH DATA (127 stations)

MD [ft]	Inclination [°]	Azimuth [°]	TVD [ft]	Vert Sect [ft]	North [ft]	East [ft]	Latitude	Longitude	DLS [°/100ft]	Comments
0.00	0.000	191.420	0.00	0.00	0.00	0.00	40°21'52.308"N	104°24'08.784"W	0.00	Tie on
17.00	0.000	191.420	17.00	0.00	0.00	0.00	40°21'52.308"N	104°24'08.784"W	0.00	First BHI Suvey
145.00	0.220	191.420	145.00	-0.23	-0.24	-0.05	40°21'52.306"N	104°24'08.785"W	0.17	
237.00	0.280	194.780	237.00	-0.59	-0.63	-0.14	40°21'52.302"N	104°24'08.786"W	0.07	
328.00	0.690	205.450	328.00	-1.23	-1.34	-0.43	40°21'52.295"N	104°24'08.790"W	0.46	
421.00	0.400	206.690	420.99	-1.94	-2.14	-0.82	40°21'52.287"N	104°24'08.795"W	0.31	
600.00	0.260	191.490	599.99	-2.81	-3.09	-1.18	40°21'52.277"N	104°24'08.799"W	0.09	
690.00	0.090	226.010	689.99	-3.03	-3.34	-1.27	40°21'52.275"N	104°24'08.800"W	0.21	
782.00	1.490	248.720	781.98	-3.28	-3.83	-2.44	40°21'52.270"N	104°24'08.816"W	1.53	
873.00	2.650	239.100	872.92	-4.20	-5.34	-5.35	40°21'52.255"N	104°24'08.853"W	1.33	
968.00	2.630	245.940	967.82	-5.42	-7.35	-9.22	40°21'52.235"N	104°24'08.903"W	0.33	
1062.00	3.440	243.390	1061.68	-6.66	-9.50	-13.71	40°21'52.214"N	104°24'08.961"W	0.87	
1156.00	2.820	239.590	1155.54	-8.17	-11.93	-18.23	40°21'52.190"N	104°24'09.019"W	0.70	
1251.00	4.650	256.660	1250.34	-9.08	-14.00	-23.99	40°21'52.170"N	104°24'09.094"W	2.23	
1342.00	7.280	250.260	1340.84	-10.08	-16.80	-33.01	40°21'52.142"N	104°24'09.210"W	2.98	
1437.00	8.830	245.090	1434.90	-12.71	-21.90	-45.29	40°21'52.092"N	104°24'09.369"W	1.80	
1532.00	10.710	242.000	1528.52	-16.99	-29.12	-59.70	40°21'52.020"N	104°24'09.555"W	2.05	
1622.00	12.600	235.550	1616.66	-23.29	-38.60	-75.18	40°21'51.927"N	104°24'09.755"W	2.55	
1717.00	13.580	241.160	1709.20	-30.76	-49.84	-93.49	40°21'51.815"N	104°24'09.992"W	1.69	
1810.00	14.230	246.520	1799.48	-36.51	-59.66	-113.54	40°21'51.718"N	104°24'10.251"W	1.55	
1901.00	15.080	241.260	1887.52	-42.46	-69.81	-134.18	40°21'51.618"N	104°24'10.517"W	1.73	
1994.00	14.520	239.060	1977.43	-50.06	-81.62	-154.79	40°21'51.501"N	104°24'10.784"W	0.85	
2086.00	15.010	236.680	2066.40	-58.44	-94.10	-174.64	40°21'51.378"N	104°24'11.040"W	0.85	
2178.00	15.400	235.340	2155.18	-67.80	-107.59	-194.64	40°21'51.245"N	104°24'11.298"W	0.57	
2271.00	14.650	234.700	2245.00	-77.52	-121.41	-214.39	40°21'51.108"N	104°24'11.554"W	0.83	
2363.00	15.230	239.360	2333.89	-86.30	-134.29	-234.29	40°21'50.981"N	104°24'11.811"W	1.45	
2455.00	14.010	239.680	2422.91	-93.98	-146.07	-254.30	40°21'50.865"N	104°24'12.069"W	1.33	
2545.00	15.120	233.350	2510.02	-102.60	-158.58	-273.12	40°21'50.741"N	104°24'12.312"W	2.15	
2638.00	17.550	237.750	2599.26	-112.86	-173.30	-294.71	40°21'50.595"N	104°24'12.591"W	2.93	
2731.00	18.210	239.390	2687.77	-122.73	-188.18	-319.08	40°21'50.448"N	104°24'12.906"W	0.89	



# Actual Wellpath Report

## STATE NORTH PLATTE 24-21-26HNB AWP

Page 3 of 7



### REFERENCE WELLPATH IDENTIFICATION

Operator	BONANZA CREEK OIL COMPANY	Slot	SLOT#07 STATE NORTH PLATTE 24-21-26HNB (499'FSL & 2382'FEL,SEC.26)
Area	COLORADO	Well	STATE NORTH PLATTE 24-21-26HNB
Field	WELD COUNTY	Wellbore	STATE NORTH PLATTE 24-21-26HNB AWP
Facility	SEC.26-T5N-R63W		

### WELLPATH DATA (127 stations)

MD [ft]	Inclination [°]	Azimuth [°]	TVD [ft]	Vert Sect [ft]	North [ft]	East [ft]	Latitude	Longitude	DLS [°/100ft]	Comments
2823.00	15.330	250.360	2775.87	-129.30	-199.60	-342.92	40°21'50.336"N	104°24'13.214"W	4.64	
2914.00	14.280	252.040	2863.85	-132.40	-207.10	-364.92	40°21'50.261"N	104°24'13.498"W	1.25	
3006.00	15.020	245.310	2952.86	-136.52	-215.58	-386.55	40°21'50.178"N	104°24'13.778"W	2.02	
3099.00	12.880	245.400	3043.12	-141.74	-224.93	-406.93	40°21'50.085"N	104°24'14.041"W	2.30	
3191.00	13.640	243.390	3132.66	-147.01	-234.06	-425.95	40°21'49.995"N	104°24'14.287"W	0.97	
3287.00	14.300	247.880	3225.83	-152.27	-243.59	-447.05	40°21'49.901"N	104°24'14.559"W	1.32	
3382.00	13.490	247.320	3318.04	-156.70	-252.28	-468.15	40°21'49.815"N	104°24'14.832"W	0.86	
3478.00	12.450	243.340	3411.60	-161.70	-261.24	-487.73	40°21'49.726"N	104°24'15.085"W	1.43	
3573.00	13.950	249.650	3504.09	-166.25	-269.82	-507.62	40°21'49.642"N	104°24'15.342"W	2.19	
3669.00	15.690	248.540	3596.89	-170.41	-278.60	-530.55	40°21'49.555"N	104°24'15.638"W	1.84	
3765.00	15.560	247.160	3689.34	-175.33	-288.34	-554.50	40°21'49.459"N	104°24'15.947"W	0.41	
3860.00	14.940	248.630	3781.00	-180.07	-297.75	-577.64	40°21'49.366"N	104°24'16.246"W	0.77	
3957.00	14.480	247.730	3874.82	-184.62	-306.90	-600.51	40°21'49.275"N	104°24'16.542"W	0.53	
4051.00	14.480	242.030	3965.84	-190.27	-316.87	-621.76	40°21'49.177"N	104°24'16.816"W	1.52	
4147.00	15.340	235.570	4058.61	-198.75	-329.68	-642.84	40°21'49.050"N	104°24'17.088"W	1.95	
4242.00	17.140	234.520	4149.82	-209.47	-344.91	-664.61	40°21'48.900"N	104°24'17.370"W	1.92	
4337.00	17.010	234.840	4240.63	-220.88	-361.04	-687.37	40°21'48.740"N	104°24'17.664"W	0.17	
4432.00	15.040	237.510	4331.94	-231.00	-375.66	-709.12	40°21'48.596"N	104°24'17.945"W	2.21	
4526.00	14.530	243.440	4422.83	-238.56	-387.49	-729.96	40°21'48.479"N	104°24'18.214"W	1.70	
4621.00	13.230	243.900	4515.05	-244.52	-397.60	-750.38	40°21'48.379"N	104°24'18.478"W	1.37	
4716.00	12.270	243.620	4607.71	-249.97	-406.87	-769.19	40°21'48.287"N	104°24'18.721"W	1.01	
4810.00	12.120	243.520	4699.59	-255.19	-415.70	-786.97	40°21'48.200"N	104°24'18.950"W	0.16	
4905.00	11.260	244.950	4792.62	-260.04	-424.08	-804.30	40°21'48.117"N	104°24'19.174"W	0.96	
5000.00	9.500	245.420	4886.06	-264.08	-431.27	-819.83	40°21'48.046"N	104°24'19.375"W	1.85	
5096.00	8.050	243.410	4980.93	-267.71	-437.57	-833.05	40°21'47.984"N	104°24'19.546"W	1.54	
5192.00	7.180	245.420	5076.08	-270.88	-443.07	-844.52	40°21'47.930"N	104°24'19.694"W	0.95	
5288.00	6.340	243.580	5171.42	-273.66	-447.93	-854.72	40°21'47.882"N	104°24'19.826"W	0.90	
5385.00	5.640	236.930	5267.89	-276.85	-452.91	-863.51	40°21'47.832"N	104°24'19.939"W	1.02	
5481.00	3.680	238.460	5363.57	-279.68	-457.10	-870.09	40°21'47.791"N	104°24'20.024"W	2.05	
5576.00	3.780	233.820	5458.36	-282.06	-460.54	-875.22	40°21'47.757"N	104°24'20.090"W	0.33	



# Actual Wellpath Report

## STATE NORTH PLATTE 24-21-26HNB AWP

Page 4 of 7



### REFERENCE WELLPATH IDENTIFICATION

Operator	BONANZA CREEK OIL COMPANY	Slot	SLOT#07 STATE NORTH PLATTE 24-21-26HNB (499'FSL & 2382'FEL,SEC.26)
Area	COLORADO	Well	STATE NORTH PLATTE 24-21-26HNB
Field	WELD COUNTY	Wellbore	STATE NORTH PLATTE 24-21-26HNB AWP
Facility	SEC.26-T5N-R63W		

### WELLPATH DATA (127 stations)

MD [ft]	Inclination [°]	Azimuth [°]	TVD [ft]	Vert Sect [ft]	North [ft]	East [ft]	Latitude	Longitude	DLS [°/100ft]	Comments
5671.00	2.400	241.150	5553.22	-283.99	-463.35	-879.49	40°21'47.729"N	104°24'20.146"W	1.51	
5767.00	1.190	261.290	5649.18	-284.56	-464.47	-882.23	40°21'47.718"N	104°24'20.181"W	1.40	
5834.00	0.880	255.900	5716.16	-284.55	-464.70	-883.42	40°21'47.716"N	104°24'20.196"W	0.48	
5868.00	0.610	282.710	5750.16	-284.49	-464.73	-883.85	40°21'47.716"N	104°24'20.202"W	1.28	
5915.00	6.460	347.130	5797.06	-281.75	-462.09	-884.68	40°21'47.742"N	104°24'20.213"W	13.24	
5963.00	10.890	356.030	5844.50	-274.55	-454.93	-885.60	40°21'47.812"N	104°24'20.224"W	9.62	
6011.00	14.920	0.090	5891.28	-263.98	-444.22	-885.90	40°21'47.918"N	104°24'20.228"W	8.60	
6059.00	21.430	1.110	5936.86	-249.34	-429.26	-885.72	40°21'48.066"N	104°24'20.226"W	13.58	
6107.00	26.120	2.680	5980.77	-230.50	-409.93	-885.06	40°21'48.257"N	104°24'20.218"W	9.86	
6154.00	30.830	2.010	6022.08	-208.72	-387.55	-884.15	40°21'48.478"N	104°24'20.206"W	10.04	
6202.00	34.210	4.990	6062.55	-183.78	-361.80	-882.55	40°21'48.733"N	104°24'20.185"W	7.79	
6250.00	38.990	2.960	6101.07	-156.16	-333.26	-880.59	40°21'49.015"N	104°24'20.160"W	10.27	
6298.00	46.050	1.760	6136.43	-124.63	-300.87	-879.28	40°21'49.335"N	104°24'20.143"W	14.80	
6346.00	52.800	1.850	6167.63	-89.13	-264.45	-878.13	40°21'49.695"N	104°24'20.128"W	14.06	
6394.00	58.360	359.190	6194.76	-50.37	-224.88	-877.80	40°21'50.086"N	104°24'20.124"W	12.45	
6442.00	61.380	358.090	6218.85	-9.47	-183.38	-878.79	40°21'50.496"N	104°24'20.137"W	6.60	
6500.00	68.310	359.400	6243.49	42.21	-130.93	-879.92	40°21'51.014"N	104°24'20.151"W	12.12	
6538.00	69.420	358.940	6257.19	77.07	-95.49	-880.44	40°21'51.364"N	104°24'20.158"W	3.13	
6586.00	71.790	357.140	6273.13	121.76	-50.24	-881.99	40°21'51.811"N	104°24'20.178"W	6.07	
6634.00	75.300	358.330	6286.72	167.23	-4.25	-883.81	40°21'52.266"N	104°24'20.202"W	7.69	
6682.00	78.780	0.550	6297.49	213.19	42.51	-884.26	40°21'52.728"N	104°24'20.207"W	8.54	
6729.00	85.280	2.780	6304.00	258.55	89.01	-882.90	40°21'53.187"N	104°24'20.190"W	14.61	
6774.00	91.860	1.360	6305.13	302.31	133.94	-881.28	40°21'53.631"N	104°24'20.169"W	14.96	
6898.00	90.500	3.030	6302.57	422.91	257.82	-876.53	40°21'54.856"N	104°24'20.108"W	1.74	
6993.00	90.250	1.420	6301.95	515.32	352.74	-872.84	40°21'55.794"N	104°24'20.060"W	1.72	
7090.00	89.340	1.960	6302.30	609.88	449.70	-869.98	40°21'56.752"N	104°24'20.023"W	1.09	
7185.00	90.130	1.960	6302.74	702.39	544.64	-866.73	40°21'57.690"N	104°24'19.981"W	0.83	
7280.00	87.610	1.720	6304.61	794.92	639.56	-863.68	40°21'58.628"N	104°24'19.942"W	2.66	
7375.00	88.190	0.830	6308.09	887.62	734.47	-861.57	40°21'59.566"N	104°24'19.915"W	1.12	
7471.00	88.450	0.450	6310.91	981.54	830.43	-860.50	40°22'00.514"N	104°24'19.901"W	0.48	



# Actual Wellpath Report

## STATE NORTH PLATTE 24-21-26HNB AWP

Page 5 of 7



### REFERENCE WELLPATH IDENTIFICATION

Operator	BONANZA CREEK OIL COMPANY	Slot	SLOT#07 STATE NORTH PLATTE 24-21-26HNB (499'FSL & 2382'FEL,SEC.26)
Area	COLORADO	Well	STATE NORTH PLATTE 24-21-26HNB
Field	WELD COUNTY	Wellbore	STATE NORTH PLATTE 24-21-26HNB AWP
Facility	SEC.26-T5N-R63W		

### WELLPATH DATA (127 stations)

MD [ft]	Inclination [°]	Azimuth [°]	TVD [ft]	Vert Sect [ft]	North [ft]	East [ft]	Latitude	Longitude	DLS [°/100ft]	Comments
7567.00	91.580	0.850	6310.88	1075.49	926.41	-859.41	40°22'01.462"N	104°24'19.887"W	3.29	
7663.00	91.240	0.110	6308.52	1169.48	1022.38	-858.60	40°22'02.411"N	104°24'19.876"W	0.85	
7758.00	90.440	0.580	6307.13	1262.55	1117.36	-858.03	40°22'03.349"N	104°24'19.869"W	0.98	
7854.00	89.090	2.480	6307.52	1356.19	1213.32	-855.47	40°22'04.298"N	104°24'19.836"W	2.43	
7947.00	89.470	1.210	6308.69	1446.79	1306.26	-852.47	40°22'05.216"N	104°24'19.797"W	1.43	
8043.00	89.780	0.930	6309.32	1540.60	1402.24	-850.68	40°22'06.164"N	104°24'19.774"W	0.44	
8138.00	89.750	359.860	6309.71	1633.66	1497.24	-850.03	40°22'07.103"N	104°24'19.766"W	1.13	
8232.00	89.780	0.300	6310.09	1725.85	1591.24	-849.90	40°22'08.032"N	104°24'19.764"W	0.47	
8327.00	89.750	0.660	6310.48	1818.89	1686.23	-849.10	40°22'08.971"N	104°24'19.754"W	0.38	
8422.00	89.910	0.440	6310.76	1911.90	1781.23	-848.19	40°22'09.909"N	104°24'19.742"W	0.29	
8518.00	89.780	1.130	6311.02	2005.82	1877.22	-846.87	40°22'10.858"N	104°24'19.725"W	0.73	
8614.00	88.980	1.350	6312.06	2099.56	1973.19	-844.79	40°22'11.806"N	104°24'19.698"W	0.86	
8710.00	87.960	0.920	6314.62	2193.32	2069.14	-842.89	40°22'12.754"N	104°24'19.674"W	1.15	
8805.00	88.120	1.020	6317.87	2286.14	2164.07	-841.29	40°22'13.692"N	104°24'19.653"W	0.20	
8901.00	89.570	359.490	6319.81	2380.20	2260.04	-840.86	40°22'14.641"N	104°24'19.648"W	2.20	
8996.00	88.880	358.910	6321.09	2473.64	2355.02	-842.19	40°22'15.579"N	104°24'19.665"W	0.95	
9092.00	90.840	0.600	6321.33	2567.89	2451.01	-842.60	40°22'16.528"N	104°24'19.670"W	2.70	
9187.00	89.880	359.700	6320.73	2661.03	2546.01	-842.35	40°22'17.467"N	104°24'19.667"W	1.39	
9282.00	89.940	1.380	6320.88	2754.05	2641.00	-841.45	40°22'18.405"N	104°24'19.656"W	1.77	
9378.00	88.490	0.960	6322.20	2847.81	2736.97	-839.49	40°22'19.354"N	104°24'19.630"W	1.57	
9474.00	90.250	1.820	6323.25	2941.50	2832.93	-837.16	40°22'20.302"N	104°24'19.600"W	2.04	
9569.00	89.070	359.400	6323.82	3034.49	2927.91	-836.15	40°22'21.241"N	104°24'19.587"W	2.83	
9665.00	89.260	1.130	6325.21	3128.56	3023.90	-835.71	40°22'22.189"N	104°24'19.581"W	1.81	
9760.00	89.320	3.600	6326.39	3220.90	3118.80	-831.79	40°22'23.127"N	104°24'19.531"W	2.60	
9855.00	87.650	2.700	6328.90	3312.91	3213.62	-826.57	40°22'24.064"N	104°24'19.464"W	2.00	
9951.00	89.690	1.280	6331.13	3406.35	3309.53	-823.24	40°22'25.012"N	104°24'19.421"W	2.59	
10046.00	88.950	1.000	6332.26	3499.16	3404.51	-821.35	40°22'25.950"N	104°24'19.396"W	0.83	
10141.00	89.230	359.190	6333.77	3592.31	3499.49	-821.19	40°22'26.889"N	104°24'19.394"W	1.93	
10236.00	89.380	357.830	6334.92	3685.94	3594.45	-823.66	40°22'27.827"N	104°24'19.426"W	1.44	
10332.00	90.220	358.200	6335.26	3780.71	3690.39	-826.99	40°22'28.775"N	104°24'19.469"W	0.96	



# Actual Wellpath Report

## STATE NORTH PLATTE 24-21-26HNB AWP

Page 6 of 7



### REFERENCE WELLPATH IDENTIFICATION

Operator	BONANZA CREEK OIL COMPANY	Slot	SLOT#07 STATE NORTH PLATTE 24-21-26HNB (499'FSL & 2382'FEL,SEC.26)
Area	COLORADO	Well	STATE NORTH PLATTE 24-21-26HNB
Field	WELD COUNTY	Wellbore	STATE NORTH PLATTE 24-21-26HNB AWB
Facility	SEC.26-T5N-R63W		

### WELLPATH DATA (127 stations)

MD [ft]	Inclination [°]	Azimuth [°]	TVD [ft]	Vert Sect [ft]	North [ft]	East [ft]	Latitude	Longitude	DLS [°/100ft]	Comments
10426.00	88.980	358.300	6335.91	3873.43	3784.34	-829.86	40°22'29.704"N	104°24'19.506"W	1.32	
10522.00	91.640	359.050	6335.39	3968.00	3880.30	-832.08	40°22'30.652"N	104°24'19.535"W	2.88	
10616.00	90.370	358.750	6333.74	4060.53	3974.27	-833.88	40°22'31.580"N	104°24'19.558"W	1.39	
10709.00	88.980	359.130	6334.27	4152.08	4067.25	-835.60	40°22'32.499"N	104°24'19.581"W	1.55	
10804.00	89.510	359.520	6335.52	4245.48	4162.23	-836.72	40°22'33.438"N	104°24'19.595"W	0.69	
10821.00	89.290	359.650	6335.70	4262.18	4179.23	-836.84	40°22'33.606"N	104°24'19.597"W	1.50	Last BHI Survey
10876.00	89.500	359.900	6336.28	4316.18	4234.23	-837.06	40°22'34.149"N	104°24'19.599"W	0.59	Projection to Bit

### HOLE & CASING SECTIONS -

Ref Wellbore: STATE NORTH PLATTE 24-21-26HNB AWB Ref Wellpath: STATE NORTH PLATTE 24-21-26HNB AWP

String/Diameter	Start MD [ft]	End MD [ft]	Interval [ft]	Start TVD [ft]	End TVD [ft]	Start N/S [ft]	Start E/W [ft]	End N/S [ft]	End E/W [ft]
13.5in Open Hole	17.00	421.00	404.00	17.00	420.99	0.00	0.00	-2.14	-0.82
9.625in Casing Surface	17.00	476.00	459.00	17.00	475.99	0.00	0.00	-2.46	-0.97
8.75in Open Hole	421.00	6817.00	6396.00	420.99	6303.91	-2.14	-0.82	176.91	-880.04
7in Casing Intermediate	17.00	6811.00	6794.00	17.00	6304.06	0.00	0.00	170.91	-880.24
6.125in Open Hole	6774.00	10876.00	4102.00	6305.13	6336.28	133.94	-881.28	4234.23	-837.06

### WELLPATH COMPOSITION -

Ref Wellbore: STATE NORTH PLATTE 24-21-26HNB AWB Ref Wellpath: STATE NORTH PLATTE 24-21-26HNB AWP

Start MD [ft]	End MD [ft]	Positional Uncertainty Model	Log Name/Comment	Wellbore
0.00	421.00	NaviTrak (MagCorr)	BHI/Navitrak MWD 13.5" Hole <17'-421'>	STATE NORTH PLATTE 24-21-26HNB AWB
421.00	6774.00	NaviTrak (MagCorr)	BHI/Navitrak MWD 8.75" Hole <600'-6774'>	STATE NORTH PLATTE 24-21-26HNB AWB
6774.00	10821.00	NaviTrak (MagCorr)	BHI/Navitrak 6.125" Hole <6898'-10821'>	STATE NORTH PLATTE 24-21-26HNB AWB
10821.00	10876.00	Blind Drilling (std)	Projection to bit	STATE NORTH PLATTE 24-21-26HNB AWB





# Actual Wellpath Report

STATE NORTH PLATTE 24-21-26HNB AWP

Page 7 of 7



## REFERENCE WELLPATH IDENTIFICATION

Operator	BONANZA CREEK OIL COMPANY	Slot	SLOT#07 STATE NORTH PLATTE 24-21-26HNB (499'FSL & 2382'FEL,SEC.26)
Area	COLORADO	Well	STATE NORTH PLATTE 24-21-26HNB
Field	WELD COUNTY	Wellbore	STATE NORTH PLATTE 24-21-26HNB AWP
Facility	SEC.26-T5N-R63W		

## WELLPATH COMMENTS

MD [ft]	Inclination [°]	Azimuth [°]	TVD [ft]	Comment
0.00	0.000	191.420	0.00	Tie on
17.00	0.000	191.420	17.00	First BHI Suvey
10821.00	89.290	359.650	6335.70	Last BHI Survey
10876.00	89.500	359.900	6336.28	Projection to Bit