

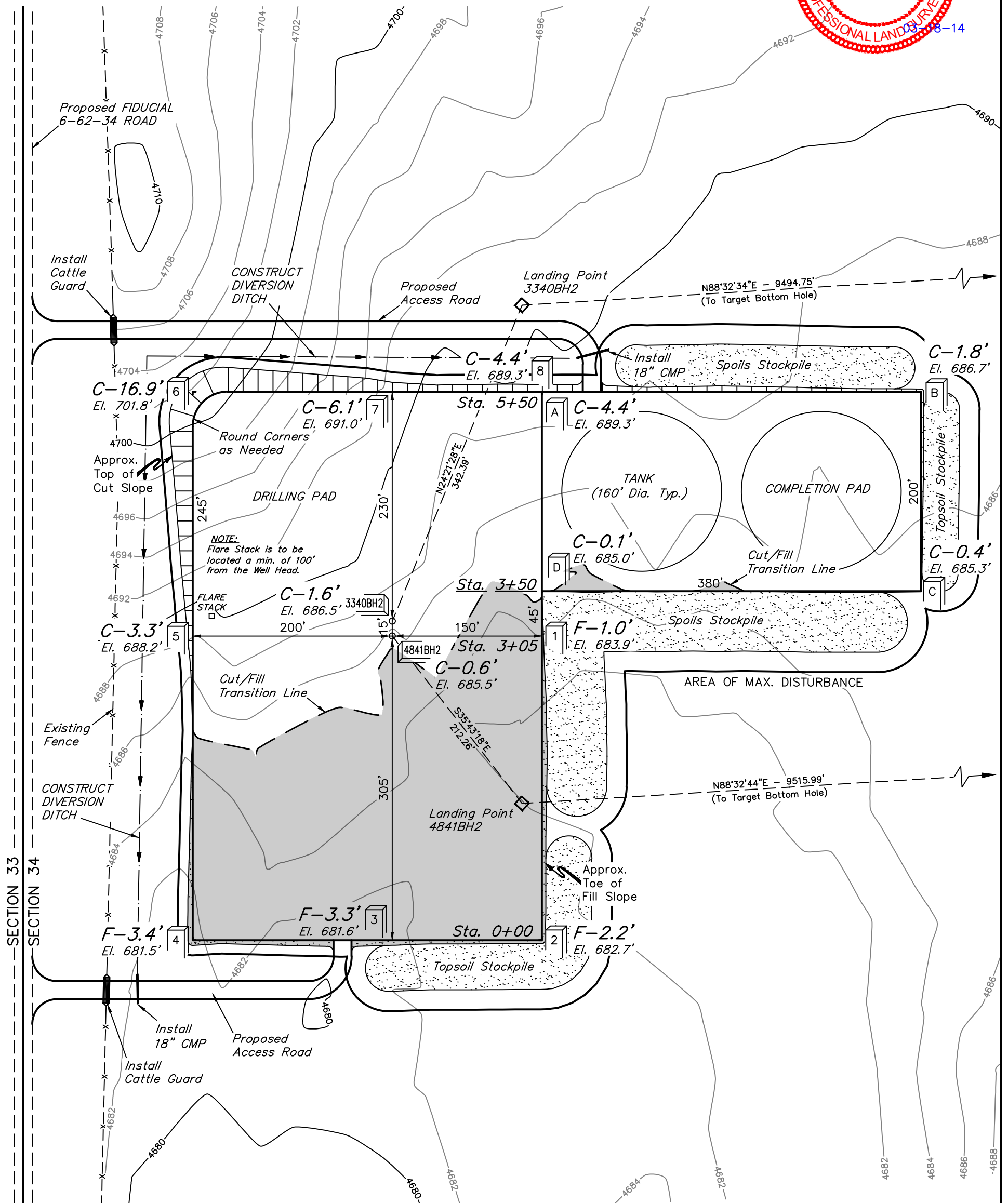
BILL BARRETT CORPORATION

CONSTRUCTION LAYOUT FOR

FIDUCIAL 6-62-34\_35 NWSW PAD #6-62-34-4841BH2 & 3340BH2  
SECTION 34, T6N, R62W, 6th P.M.  
NW 1/4 SW 1/4

FIGURE #1

SCALE: 1" = 100'  
DATE: 03-04-14  
DRAWN BY: J.S.



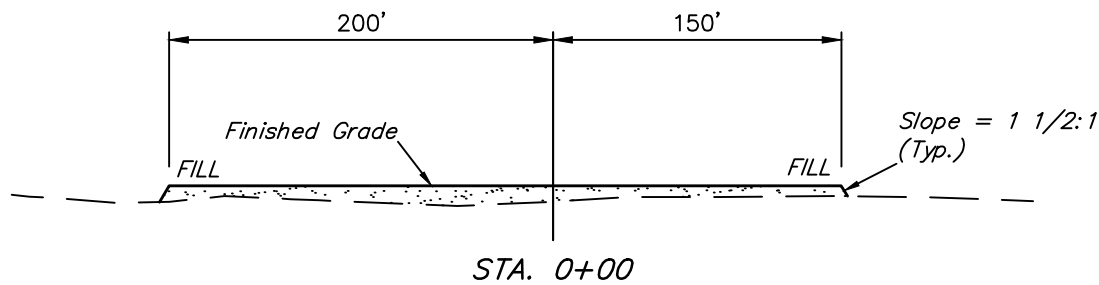
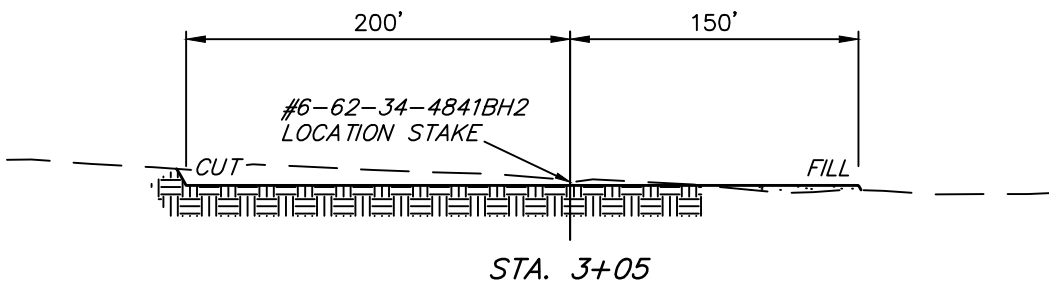
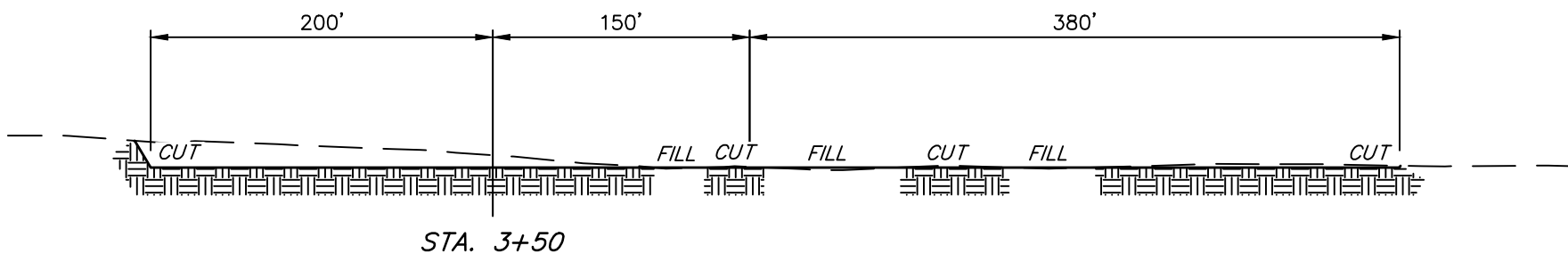
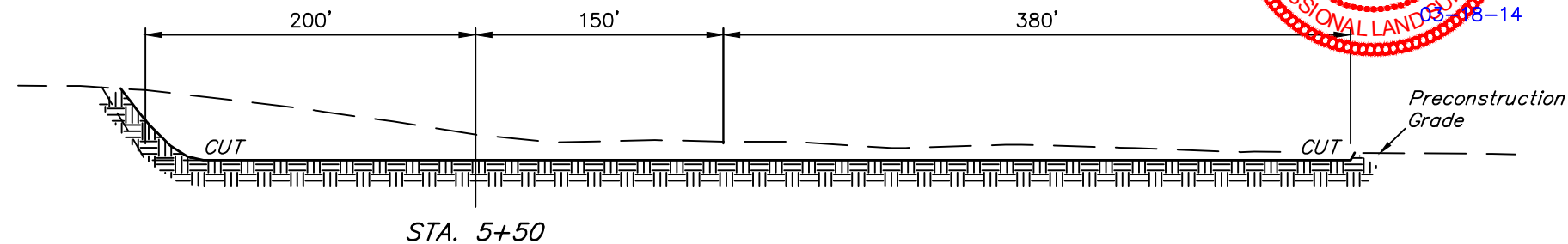
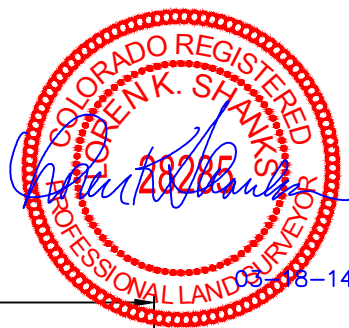
Elev. Ungraded Ground At #6-62-34-4841BH2 Loc. Stake = 4685.5'  
FINISHED GRADE ELEV. AT #6-62-34-4841BH2 LOC. STAKE = 4684.9'

UINTAH ENGINEERING & LAND SURVEYING  
85 So. 200 East \* Vernal, Utah 84078 \* (435) 789-1017

1" = 40'  
X-Section  
Scale  
1" = 100'  
DATE: 03-04-14  
DRAWN BY: J.S.

BILL BARRETT CORPORATION  
CONSTRUCTION LAYOUT CROSS SECTIONS FOR  
FIDUCIAL 6-62-34\_35 NSW PAD #6-62-34-4841BH2 & 3340BH2  
SECTION 34, T6N, R62W, 6th P.M.  
NW 1/4 SW 1/4

FIGURE #2



NOTE:  
Topsoil should not be  
Stripped Below Finished  
Grade on Substructure Area.

APPROXIMATE YARDAGES  
FOR DRILLING PAD

(6") Topsoil Stripping	= 3,810 Cu. Yds.
Remaining Location	= 17,450 Cu. Yds.
<b>TOTAL CUT</b>	<b>= 21,260 CU. YDS.</b>
<b>FILL</b>	<b>= 7,980 CU. YDS.</b>
EXCESS MATERIAL	= 13,280 Cu. Yds.
Topsoil	= 3,810 Cu. Yds.
EXCESS UNBALANCE (After Interim Rehabilitation)	= 9,470 Cu. Yds.

APPROXIMATE YARDAGES  
FOR COMPLETION PAD

(6") Topsoil Stripping	= 1,460 Cu. Yds.
Remaining Location	= 3,100 Cu. Yds.
<b>TOTAL CUT</b>	<b>= 4,560 CU. YDS.</b>
<b>FILL</b>	<b>= 80 CU. YDS.</b>
EXCESS MATERIAL	= 4,480 Cu. Yds.
Topsoil	= 1,460 Cu. Yds.
EXCESS UNBALANCE (After Interim Rehabilitation)	= 3,020 Cu. Yds.

\* NOTE:  
FILL QUANTITY INCLUDES  
5% FOR COMPACTION

**APPROXIMATE ACREAGE**  
DRILLING PAD DISTURBANCE = ± 6.481 ACRES  
COMPLETION PAD DISTURBANCE = ± 2.564 ACRES  
ACCESS ROAD DISTURBANCE = ± 1.150 ACRES  
**TOTAL = ± 10.195 ACRES**

UINTAH ENGINEERING & LAND SURVEYING  
85 So. 200 East \* Vernal, Utah 84078 \* (435) 789-1017