

BILL BARRETT CORPORATION
FIDUCIAL 6-62-34_35 NWSW PAD
#6-62-34-3340BH2 & 4841BH2
LOCATED IN WELD COUNTY, COLORADO
SECTION 34, T6N, R62W, 6th P.M.

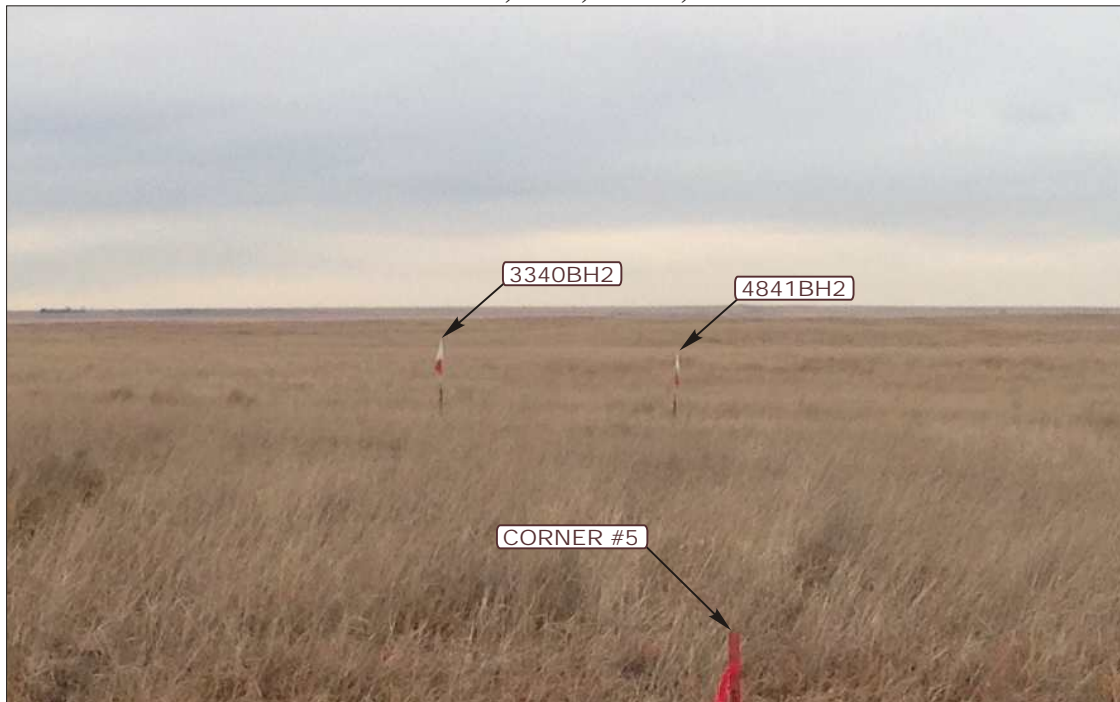


PHOTO: VIEW FROM CORNER #5 TO LOCATION STAKES

CAMERA ANGLE: EASTERLY



**PHOTO: VIEW FROM BEGINNING OF PROPOSED
FIDUCIAL 6-62-34 ROAD**

CAMERA ANGLE: WESTERLY



- Since 1964 -

UE&S Uintah Engineering & Land Surveying
85 South 200 East Vernal, Utah 84078
(435) 789-1017 * FAX (435) 789-1813

LOCATION PHOTOS

01 **28** **14**
MONTH DAY YEAR

TAKEN BY: C.B.

DRAWN BY: T.W.

REVISION: 00-00-00

**PHOTO
P1**

BILL BARRETT CORPORATION
FIDUCIAL 6-62-34_35 NWSW PAD
#6-62-34-4841BH2 & 3340BH2
LOCATED IN WELD COUNTY, COLORADO
SECTION 24, T6N, R62W, 6th P.M.



PHOTO: VIEW OF LOCATION STAKES

CAMERA ANGLE: NORTHERLY



PHOTO: VIEW OF LOCATION STAKES

CAMERA ANGLE: EASTERLY



- Since 1964 -

UE&S Uintah Engineering & Land Surveying
85 South 200 East Vernal, Utah 84078
(435) 789-1017 * FAX (435) 789-1813

LOCATION PHOTOS

01 **28** **14**
MONTH DAY YEAR

PHOTO

P2

TAKEN BY: C.B.

DRAWN BY: T.W.

REVISION: 00-00-00

BILL BARRETT CORPORATION
FIDUCIAL 6-62-34_35 NWSW PAD
#6-62-34-4841BH2 & 3340BH2
LOCATED IN WELD COUNTY, COLORADO
SECTION 34, T6N, R62W, 6th P.M.



PHOTO: VIEW OF LOCATION STAKES

CAMERA ANGLE: SOUTHERLY



PHOTO: VIEW OF LOCATION STAKES

CAMERA ANGLE: WESTERLY



- Since 1964 -

U&E Uintah Engineering & Land Surveying
85 South 200 East Vernal, Utah 84078
(435) 789-1017 * FAX (435) 789-1813

LOCATION PHOTOS

01 **28** **14**
MONTH DAY YEAR

TAKEN BY: C.B.

DRAWN BY: T.W.

REVISION: 00-00-00

PHOTO
P3