

NO GAMMA DATA

MD 2787 TVD 2761.27
INC 12.26 AZ 167.65
VS 74.83

ROP (Ft/hr)
Gamma (API)

NO GAMMA DATA

MD 2882 TVD 2853.91
INC 13.33 AZ 173.61
VS 80.62

NO GAMMA DATA

2750

2800

2850

2900

2700' MD-2750' MD: SLTST: 70% LTGY
- MEDLTGY, FRI, FN TO MED GRN,
W SRTD, CALC CMT, SANDY, INTGR
POR, NO STN, NO FLOR, NO O
FLOR, NO CUT, NO RNG

2750' MD-2800' MD: SLTST: 70% LTGY
- MEDLTGY, FRI, FN TO MED GRN,
W SRTD, CALC CMT, SANDY, INTGR
POR, NO STN, NO FLOR, NO O
FLOR, NO CUT, NO RNG

PIERRE 2850' MD 2823' TVD



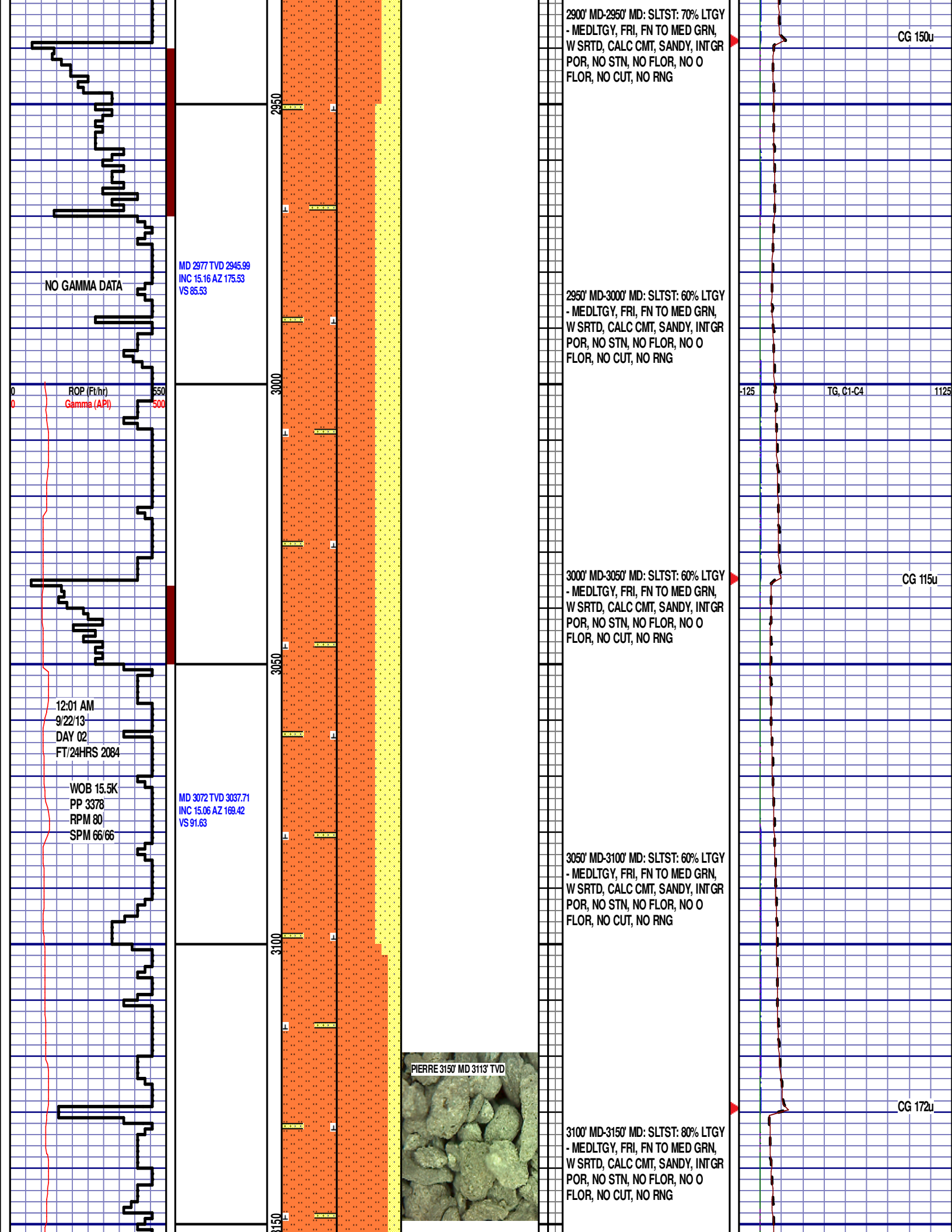
2800' MD-2850' MD: SLTST: 70% LTGY
- MEDLTGY, FRI, FN TO MED GRN,
W SRTD, CALC CMT, SANDY, INTGR
POR, NO STN, NO FLOR, NO O
FLOR, NO CUT, NO RNG

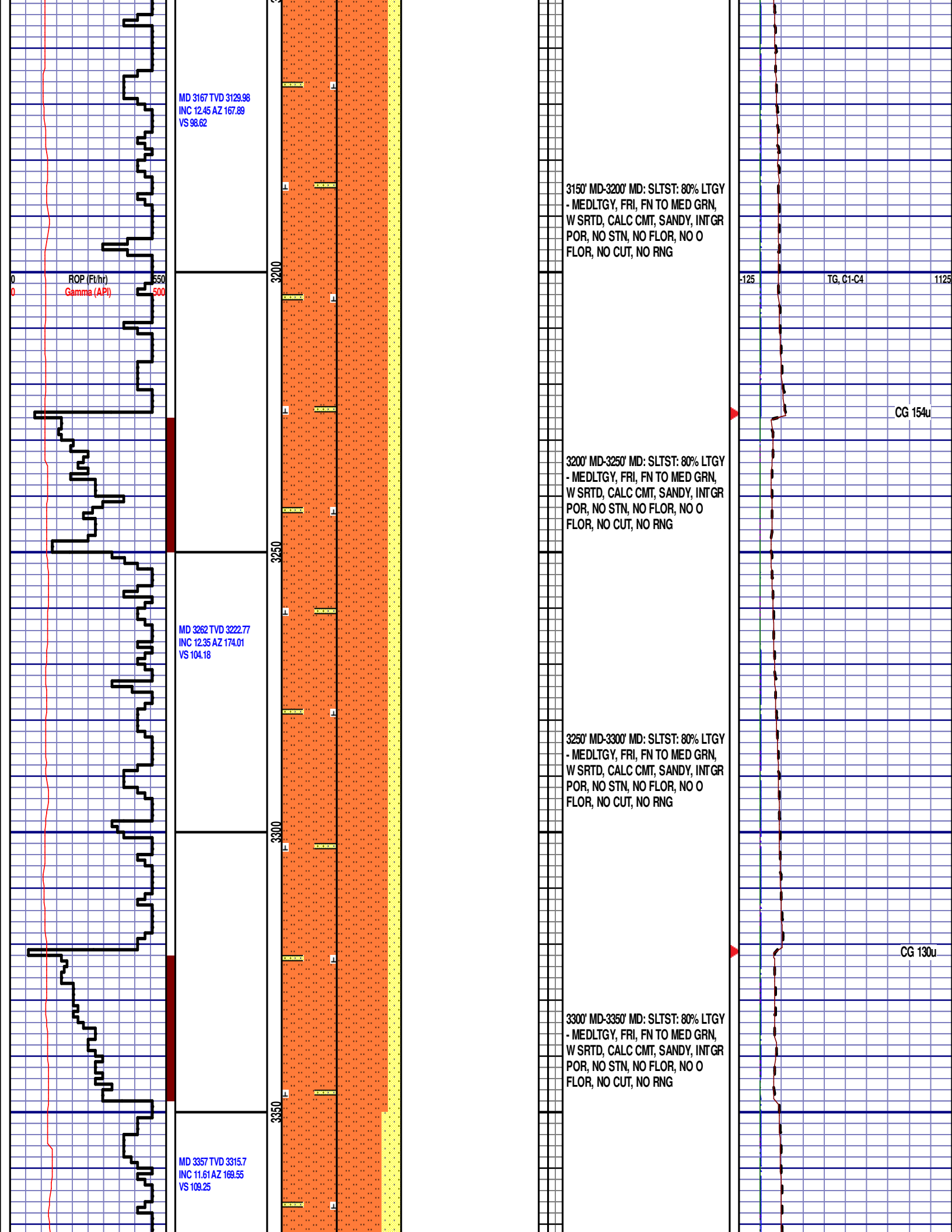
2850' MD-2900' MD: SLTST: 70% LTGY
- MEDLTGY, FRI, FN TO MED GRN,
W SRTD, CALC CMT, SANDY, INTGR
POR, NO STN, NO FLOR, NO O
FLOR, NO CUT, NO RNG

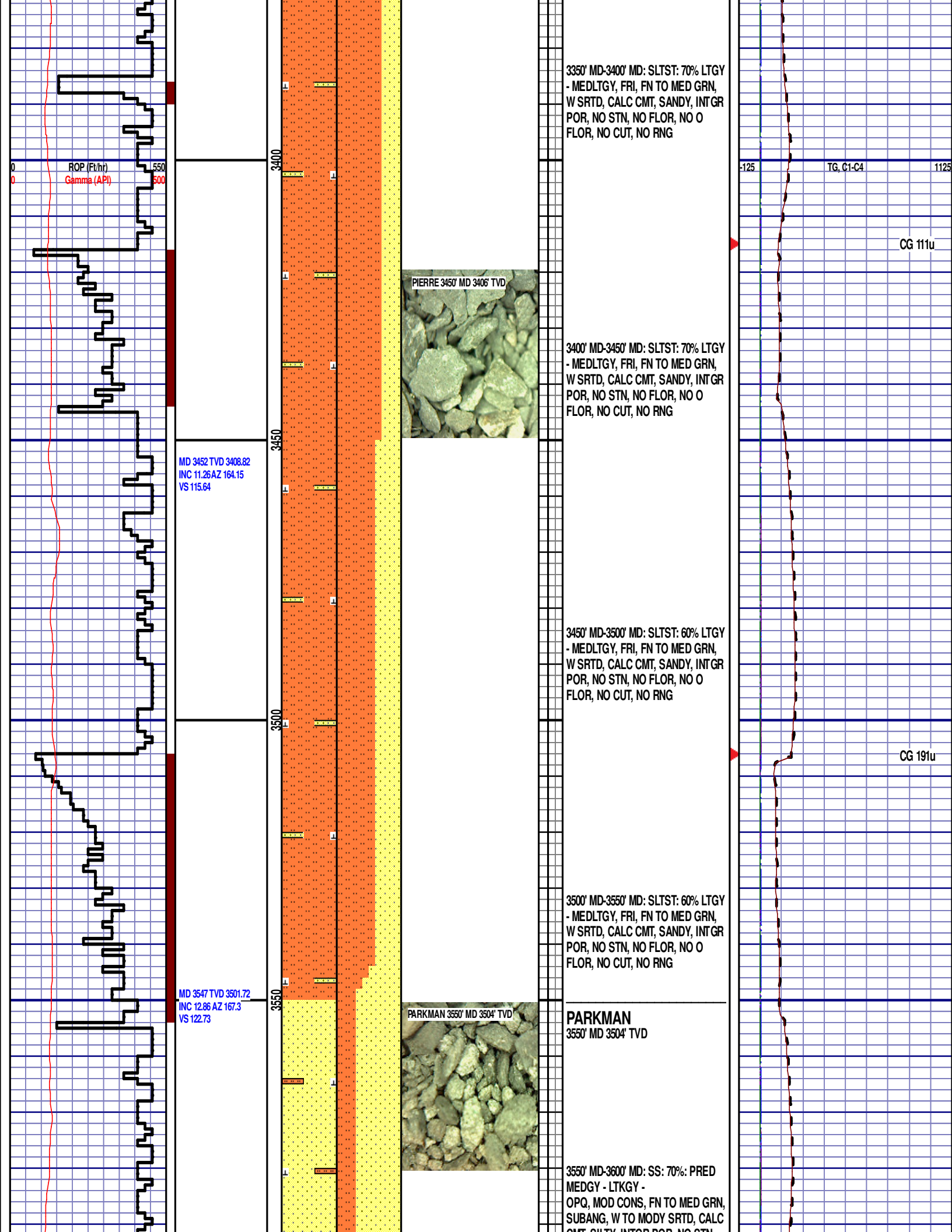
CG 105u

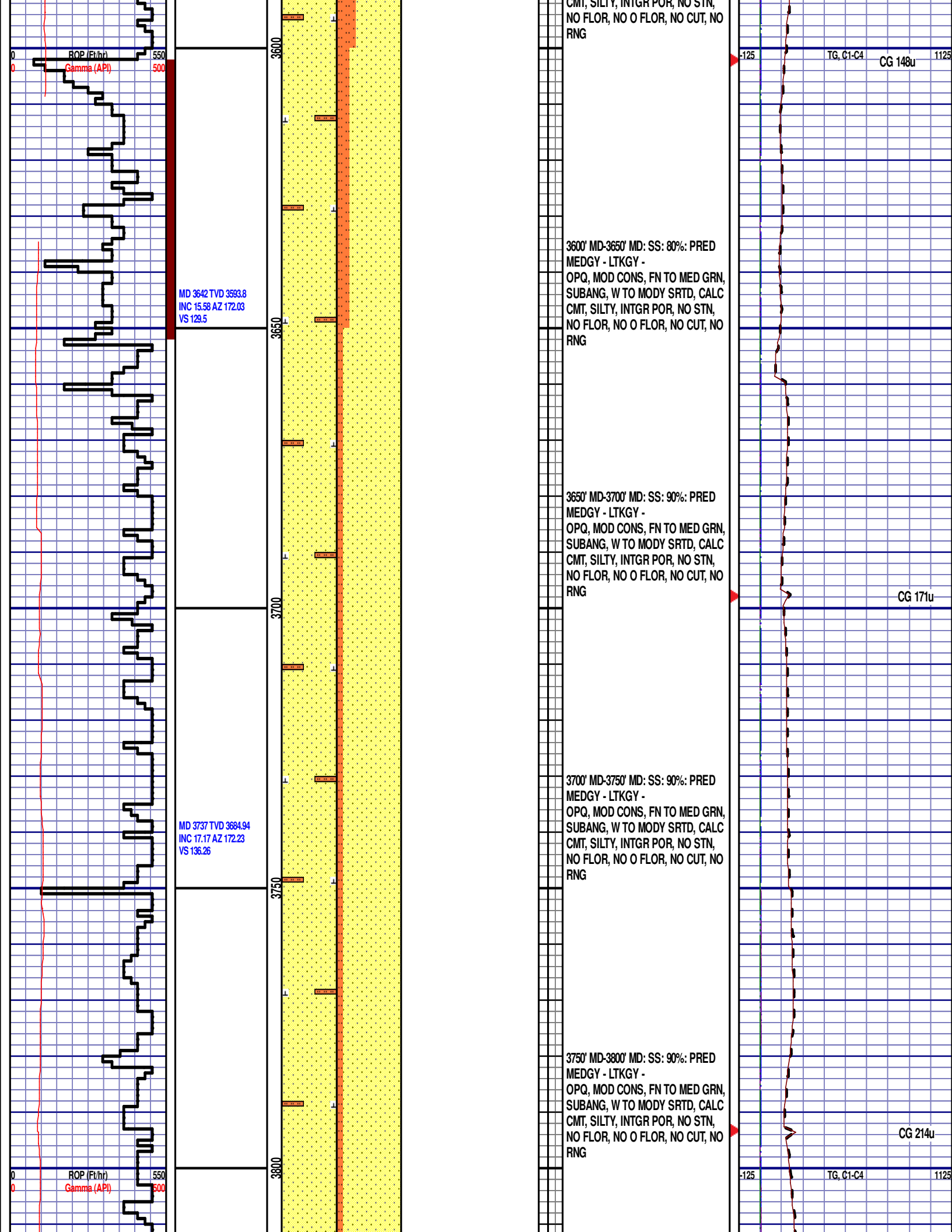
TG, C1-C4

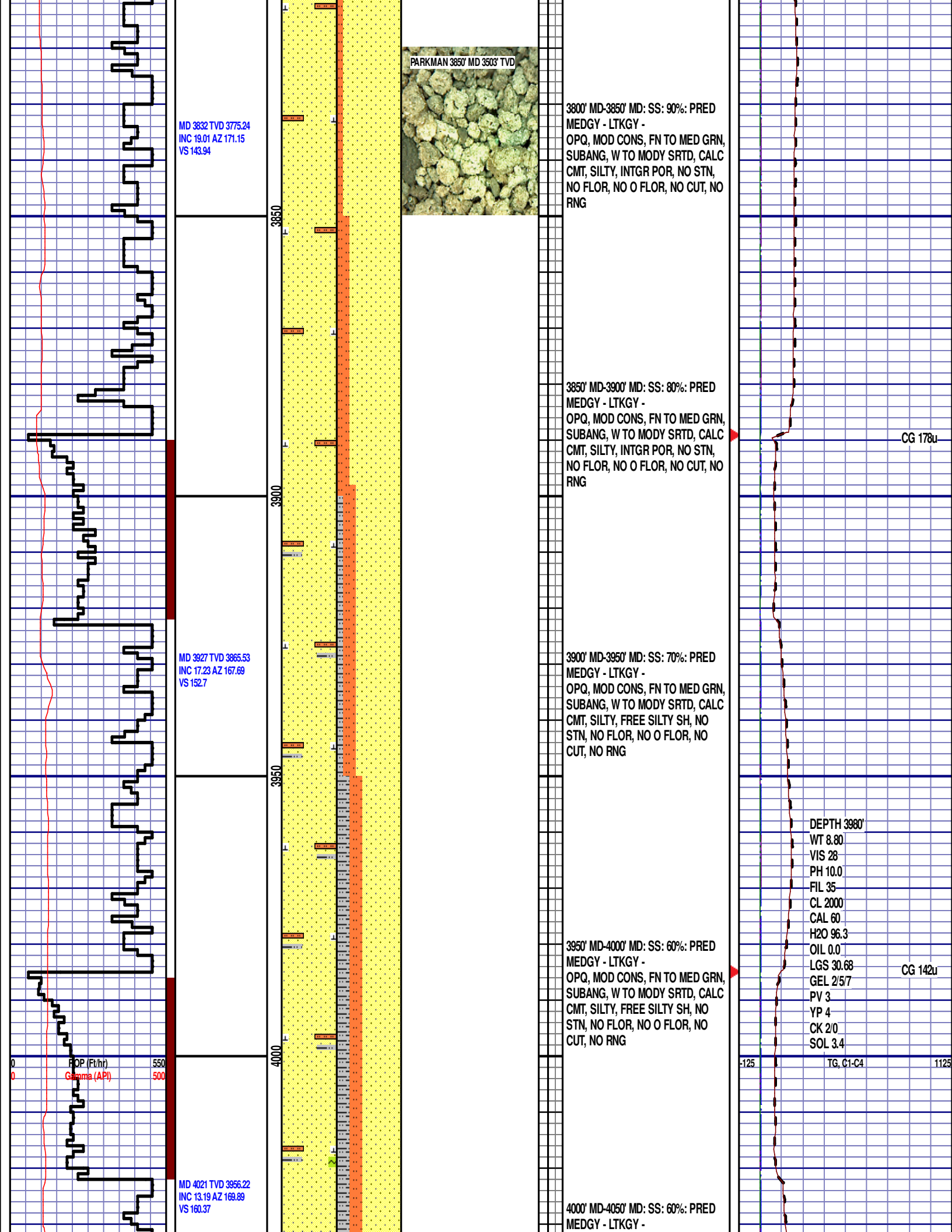
CG 124u

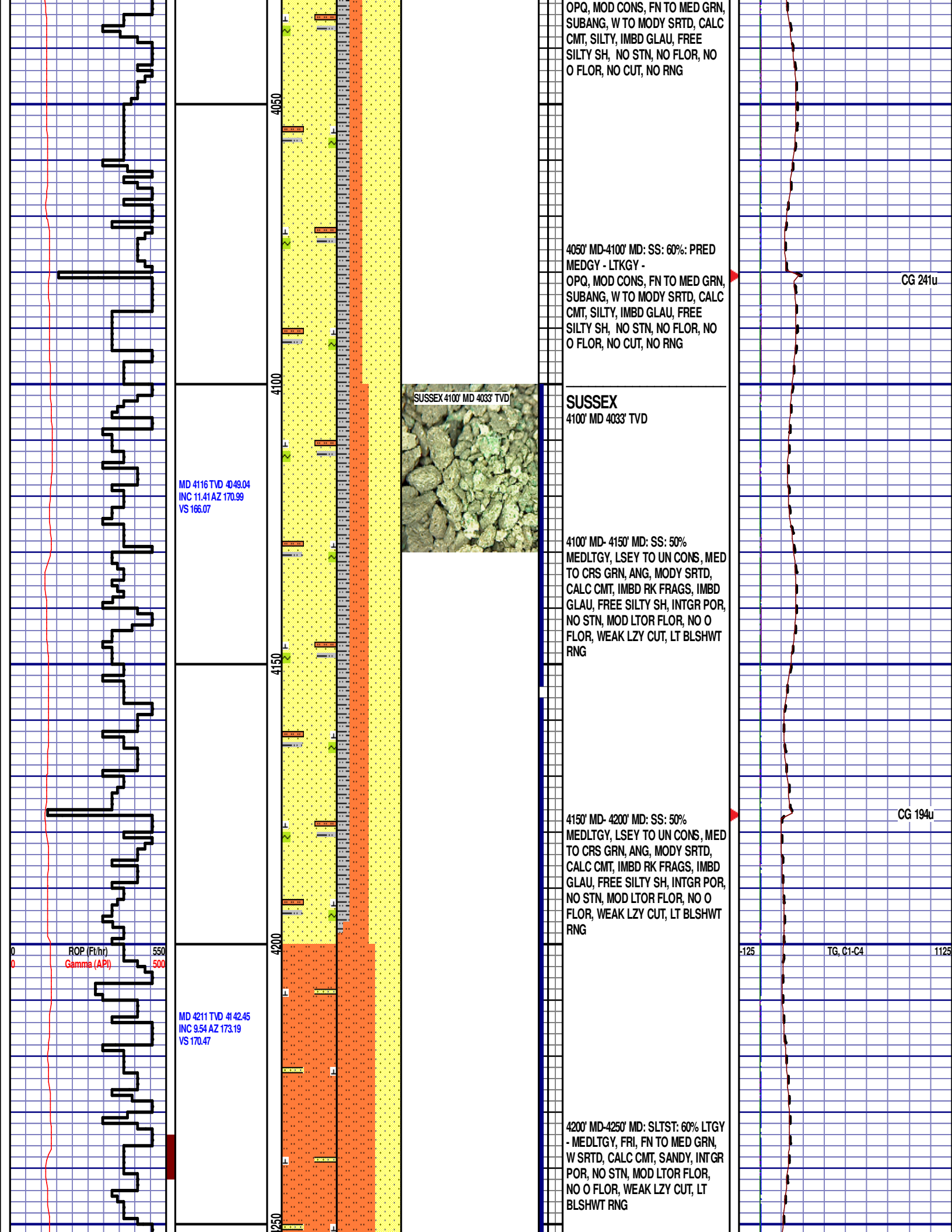








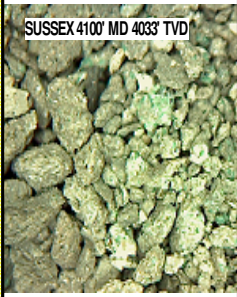




OPQ, MOD CONS, FN TO MED GRN,
SUBANG, W TO MODY SRTD, CALC
CMT, SILTY, IMBD GLAU, FREE
SILTY SH, NO STN, NO FLOR, NO
O FLOR, NO CUT, NO RNG

4050' MD-4100' MD: SS: 60%: PRED
MEDGY - LTKGY -
OPQ, MOD CONS, FN TO MED GRN,
SUBANG, W TO MODY SRTD, CALC
CMT, SILTY, IMBD GLAU, FREE
SILTY SH, NO STN, NO FLOR, NO
O FLOR, NO CUT, NO RNG

CG 241u



SUSSEX
4100' MD 4033' TVD

4100' MD- 4150' MD: SS: 50%
MEDLTGY, LSEY TO UN CONS, MED
TO CRS GRN, ANG, MODY SRTD,
CALC CMT, IMBD RK FRAGS, IMBD
GLAU, FREE SILTY SH, INTGR POR,
NO STN, MOD LTOR FLOR, NO O
FLOR, WEAK LZY CUT, LT BLSHWT
RNG

CG 194u

4150' MD- 4200' MD: SS: 50%
MEDLTGY, LSEY TO UN CONS, MED
TO CRS GRN, ANG, MODY SRTD,
CALC CMT, IMBD RK FRAGS, IMBD
GLAU, FREE SILTY SH, INTGR POR,
NO STN, MOD LTOR FLOR, NO O
FLOR, WEAK LZY CUT, LT BLSHWT
RNG

-125 TG, C1-C4 1125

4200' MD-4250' MD: SLTST: 60% LTGY
- MEDLTGY, FRI, FN TO MED GRN,
W SRTD, CALC CMT, SANDY, INTGR
POR, NO STN, MOD LTOR FLOR,
NO O FLOR, WEAK LZY CUT, LT
BLSHWT RNG

MD 4116 TVD 4049.04
INC 11.41 AZ 170.99
VS 166.07

MD 4211 TVD 4142.45
INC 9.54 AZ 173.19
VS 170.47

ROP (ft/hr)
Gamma (API)

WOB 21.2K
PP 3331
RPM 80
SPM 66/66

MD 4306 TVD 4236.3
INC 8.28 AZ 172.68
VS 173.98

MD 4401 TVD 4330.3
INC 8.38 AZ 175.12
VS 177.04

ROP (Ft/hr)
Gamma (API)

SUSSEX 4400' MD 4329' TVD

4250' MD-4300' MD: SLTST: 60% LTGY
- MEDLTGY, FRI, FN TO MED GRN,
W SRTD, CALC CMT, SANDY, INTGR
POR, NO STN, MOD LTOR FLOR,
NO O FLOR, WEAK LZY CUT, LT
BLSHWT RNG

4300' MD-4350' MD: SLTST: 50% LTGY
- MEDLTGY, FRI, FN TO MED GRN,
W SRTD, CALC CMT, SANDY, INTGR
POR, NO STN, MOD LTOR FLOR,
NO O FLOR, WEAK LZY CUT, LT
BLSHWT RNG

4350' MD-4400' MD: SLTST: 50% LTGY
- MEDLTGY, FRI, FN TO MED GRN,
W SRTD, CALC CMT, IMBD GLAU,
SANDY, INTGR POR, NO STN, MOD
LTOR FLOR, NO O FLOR, WEAK
LZY CUT, LT BLSHWT RNG

4400' MD-4450' MD: SLTST: 60% LTGY
- MEDLTGY, FRI, FN TO MED GRN,
W SRTD, CALC CMT, IMBD GLAU,
SANDY, INTGR POR, NO STN, MOD
LTOR FLOR, NO O FLOR, WEAK
LZY CUT, LT BLSHWT RNG

CG 137u

CG 121u

TG, C1-C4

CG 247u

EQUIPMENT ERROR
FROM 4476' MD TO 4489'
MD

MD 4496 TVD 4424.44
INC 7.06 AZ 179.96
VS 179.13

MD 4591 TVD 4518.88
INC 5.31 AZ 182.75
VS 180.12

ROP (Ft)
Gamma (API)

MD 4686 TVD 4613.58
INC 3.82 AZ 180.41

4450' MD-4500' MD: SLTST: 60% LTGY
- MEDLTGY, FRI, FN TO MED GRN,
W SRTD, CALC CMT, IMBD GLAU,
SANDY, INTGR POR, NO STN, MOD
LTOR FLOR, NO O FLOR, WEAK
LZY CUT, LT BLSHWT RNG

4500' MD-4550' MD: SLTST: 60% LTGY
- MEDLTGY, FRI, FN TO MED GRN,
W SRTD, CALC CMT, IMBD GLAU,
SANDY, INTGR POR, NO STN, MOD
LTOR FLOR, NO O FLOR, WEAK
LZY CUT, LT BLSHWT RNG

4550' MD-4600' MD: SLTST: 60% LTGY
- MEDLTGY, FRI, FN TO MED GRN,
W SRTD, CALC CMT, FREE PYR,
IMBD GLAU, SANDY, INTGR POR,
NO STN, MOD LTOR FLOR, NO O
FLOR, WEAK LZY CUT, LT BLSHWT
RNG

4600' MD-4650' MD: SLTST: 60% LTGY
- MEDLTGY, FRI, FN TO MED GRN,
W SRTD, CALC CMT, FREE PYR,
IMBD GLAU, SANDY, INTGR POR,
NO STN, MOD LTOR FLOR, NO O
FLOR, WEAK LZY CUT, LT BLSHWT
RNG

4650' MD-4700' MD: SS: 70% WH -
MEDLTGY, LSEY CONS, MED TO
CRS GRN, ANG, MODY SRTD, CALC
CMT, IMBD GLAU, IMBD RK FRGS,
SILTY, INTGR POR, NO STN, MOD
LTOR FLOR, NO O FLOR, WEAK
LZY CUT, LT BLSHWT RNG

EQUIPMENT ERROR FROM
4476' MD TO 4489' MD

CG 267u

-125 TG, C1-C4 1125

CG 269u

SUSSEX 4700' MD 4628' TVD



VS 180.78

4700

4750

4800

4850

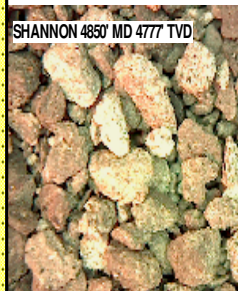
4900

MD 4781 TVD 4708.4
INC 0.08 AZ 183.14
VS 181.29

EQUIPMENT ERROR
FROM 4791' MD TO
4803' MD

ROP (Ft/hr)
Gamma (API)

MD 4876 TVD 4803.31
INC 2 AZ 186.49
VS 181.46



SHANNON 4850' MD 4777 TVD

4700' MD-4750' MD: SS: 70% WH -
MEDLTGY, LSEY CONS, MED TO
CRS GRN, ANG, MODY SRTD, CALC
CMT, IMBD GLAU, IMBD RK FRAGS,
SILTY, INTGR POR, NO STN, MOD
LTOR FLOR, NO O FLOR, WEAK
LZY CUT, LT BLSHWT RN

4750' MD-4800' MD: SS: 50% WH -
MEDLTGY, LSEY CONS, MED TO
CRS GRN, ANG, MODY SRTD, CALC
CMT, IMBD GLAU, IMBD RK FRAGS,
SILTY, INTGR POR, NO STN, MOD
LTOR FLOR, NO O FLOR, WEAK
LZY CUT, LT BLSHWT RN

4800' MD-4850' MD: SLTST: 60% LTGY
- MEDLTGY, FRI, FN TO MED GRN,
W SRTD, CALC CMT, FREE PYR,
IMBD GLAU, SANDY, INTGR POR,
NO STN, MOD LTOR FLOR, NO O
FLOR, WEAK LZY CUT, LT BLSHWT
RNG

SHANNON
4850' MD 4777 TVD

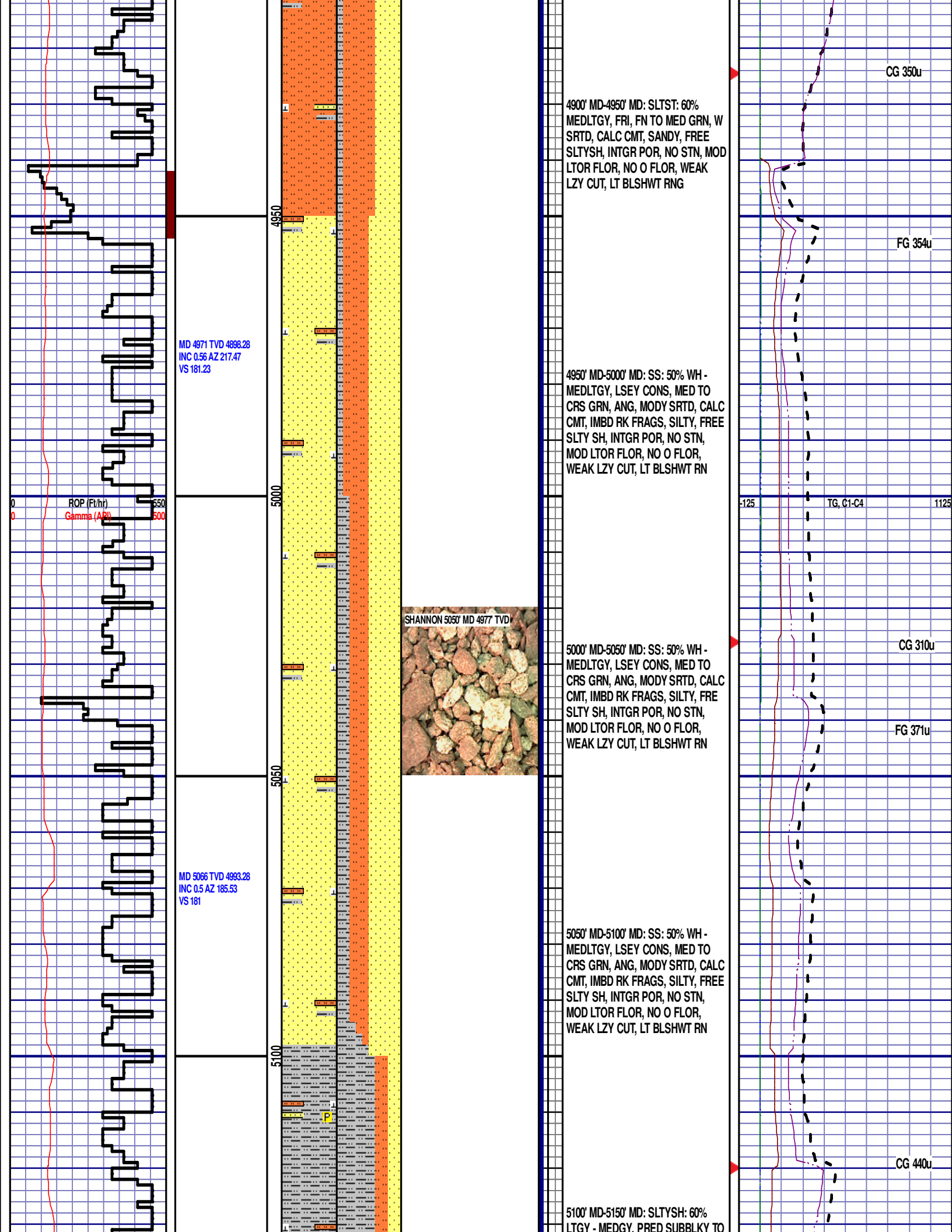
4850' MD-4900' MD: SLTST: 70%
MEDLTGY, FRI, FN TO MED GRN, W
SRTD, CALC CMT, SANDY, FREE
SLTYSH, INTGR POR, NO STN, MOD
LTOR FLOR, NO O FLOR, WEAK
LZY CUT, LT BLSHWT RNG

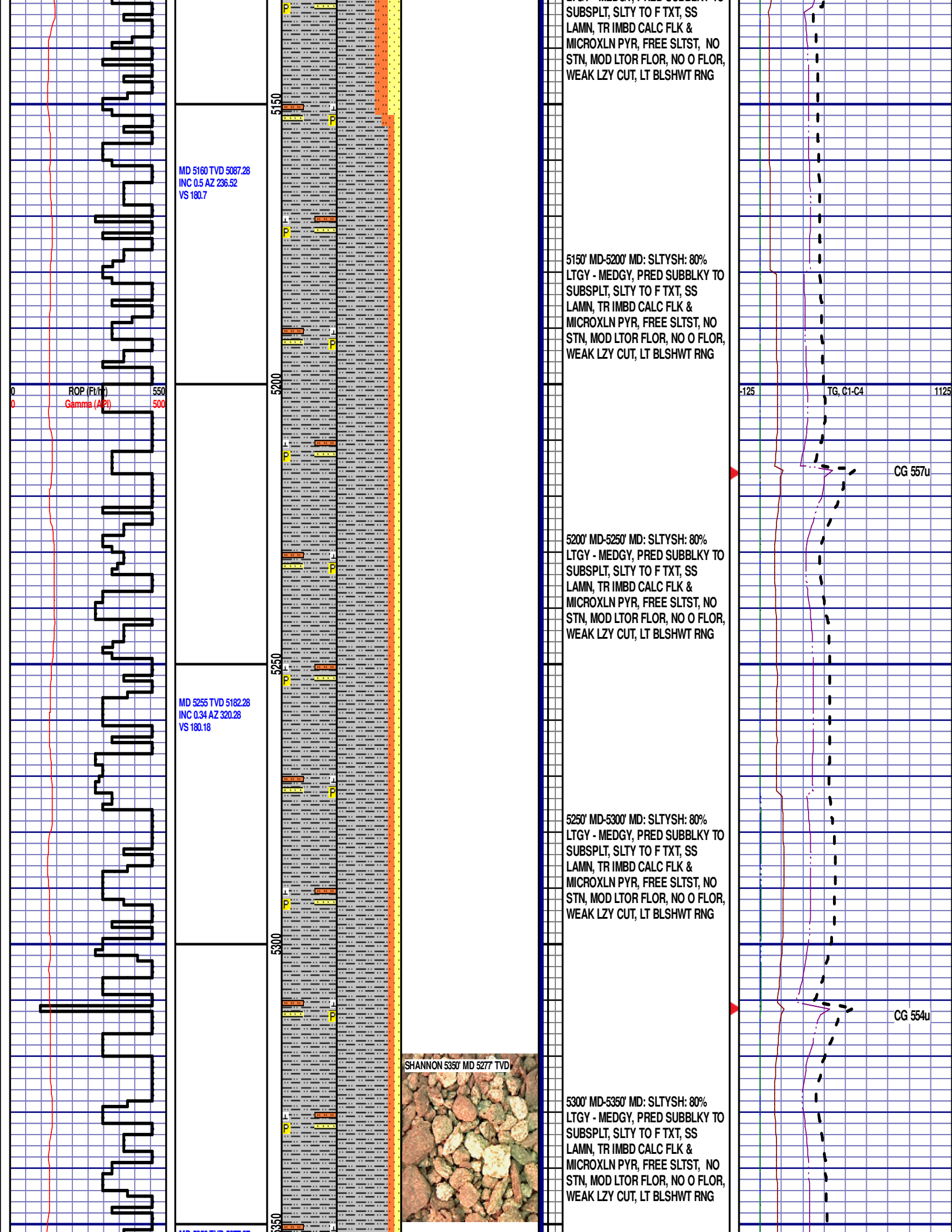
CG 251u

EQUIPMENT ERROR FROM
4791' MD TO 4803' MD

TG, C1-C4

CG 218u





SUBSPLT, SLTY TO F TXT, SS
LAMN, TR IMBD CALC FLK &
MICROXLN PYR, FREE SLTST, NO
STN, MOD LTOR FLOR, NO O FLOR,
WEAK LZY CUT, LT BLSHWT RNG

5150' MD-5200' MD: SLTYSH: 80%
LTGY - MEDGY, PRED SUBBLKY TO
SUBSPLT, SLTY TO F TXT, SS
LAMN, TR IMBD CALC FLK &
MICROXLN PYR, FREE SLTST, NO
STN, MOD LTOR FLOR, NO O FLOR,
WEAK LZY CUT, LT BLSHWT RNG

5200' MD-5250' MD: SLTYSH: 80%
LTGY - MEDGY, PRED SUBBLKY TO
SUBSPLT, SLTY TO F TXT, SS
LAMN, TR IMBD CALC FLK &
MICROXLN PYR, FREE SLTST, NO
STN, MOD LTOR FLOR, NO O FLOR,
WEAK LZY CUT, LT BLSHWT RNG

5250' MD-5300' MD: SLTYSH: 80%
LTGY - MEDGY, PRED SUBBLKY TO
SUBSPLT, SLTY TO F TXT, SS
LAMN, TR IMBD CALC FLK &
MICROXLN PYR, FREE SLTST, NO
STN, MOD LTOR FLOR, NO O FLOR,
WEAK LZY CUT, LT BLSHWT RNG

5300' MD-5350' MD: SLTYSH: 80%
LTGY - MEDGY, PRED SUBBLKY TO
SUBSPLT, SLTY TO F TXT, SS
LAMN, TR IMBD CALC FLK &
MICROXLN PYR, FREE SLTST, NO
STN, MOD LTOR FLOR, NO O FLOR,
WEAK LZY CUT, LT BLSHWT RNG



SHANNON 5350' MD 5277' TVD

MD 5350 TVD 5277.27
INC 0.6 AZ 261.7
VS 179.49

ROP (Ft/hr)
Gamma (API)

MD 5445 TVD 5372.27
INC 0.59 AZ 253.46
VS 178.56

EQUIPMENT ERROR
FROM 5460' MD TO
5473' MD

MD 5540 TVD 5467.27
INC 0.15 AZ 333.66
VS 178.05

5350' MD-5400' MD: SLTYSH: 80%
LTGY - MEDGY, PRED SUBBLKY TO
SUBSPLT, SLTY TO F TXT, SS
LAMN, TR IMBD CALC FLK &
MICROXLN PYR, FREE SLTST. NO
STN, MOD LTOR FLOR, NO O FLOR,
WEAK LZY CUT, LT BLSHWT RNG

5400' MD-5450' MD: SLTYSH: 80%
LTGY - MEDGY, PRED SUBBLKY TO
SUBSPLT, SLTY TO F TXT, TR IMBD
CALC FLK & MICROXLN PYR, FREE
SLTST. NO STN, MOD LTOR FLOR,
NO O FLOR, WEAK LZY CUT, LT
BLSHWT RNG

5450' MD-5500' MD: SLTYSH: 80%
LTGY - MEDGY, PRED SUBBLKY TO
SUBSPLT, SLTY TO F TXT, TR IMBD
CALC FLK & MICROXLN PYR, FREE
SLTST. NO STN, MOD LTOR FLOR,
NO O FLOR, WEAK LZY CUT, LT
BLSHWT RNG

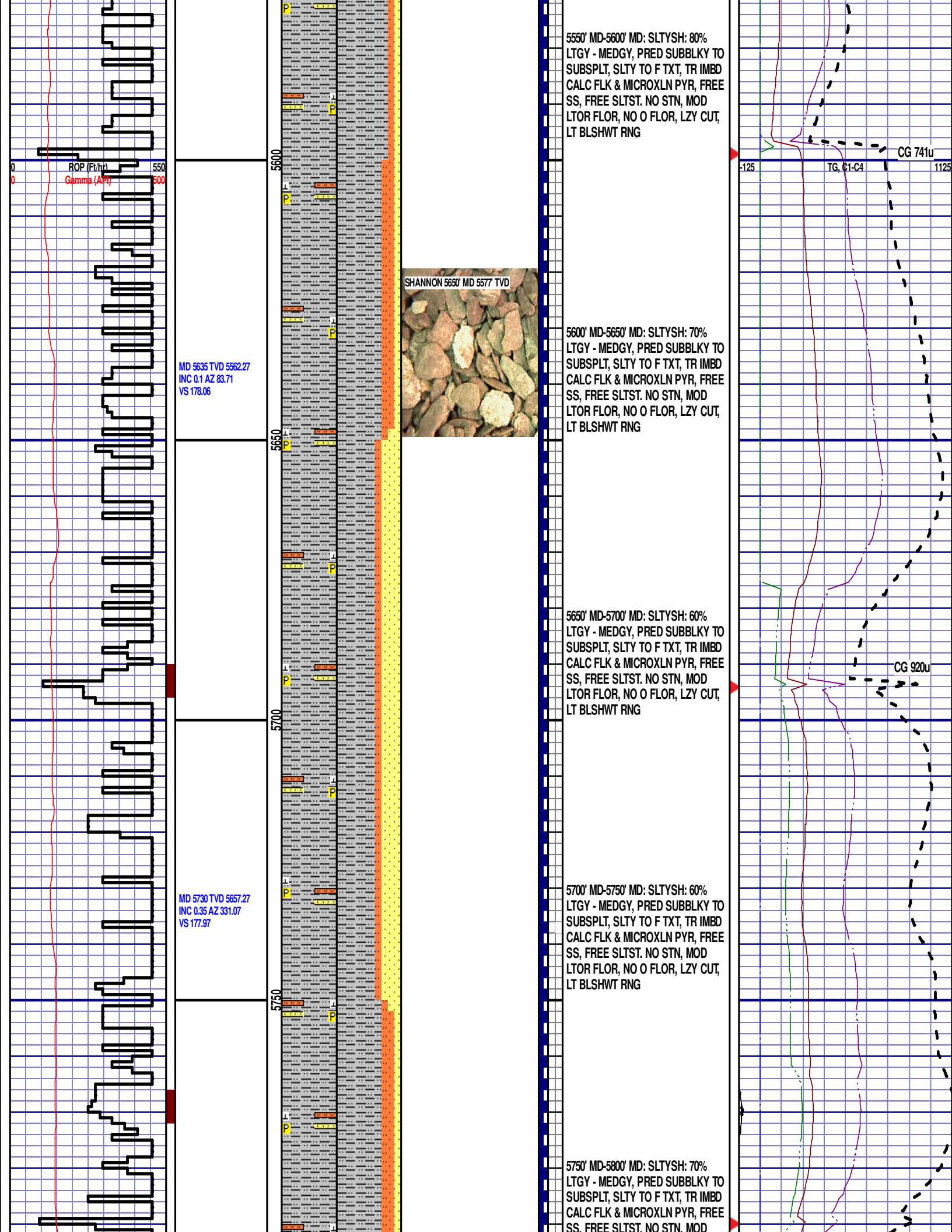
5500' MD-5550' MD: SLTYSH: 90%
LTGY - MEDGY, PRED SUBBLKY TO
SUBSPLT, SLTY TO F TXT, TR IMBD
CALC FLK & MICROXLN PYR, FREE
SLTST. NO STN, MOD LTOR FLOR,
NO O FLOR, WEAK LZY CUT, LT
BLSHWT RNG

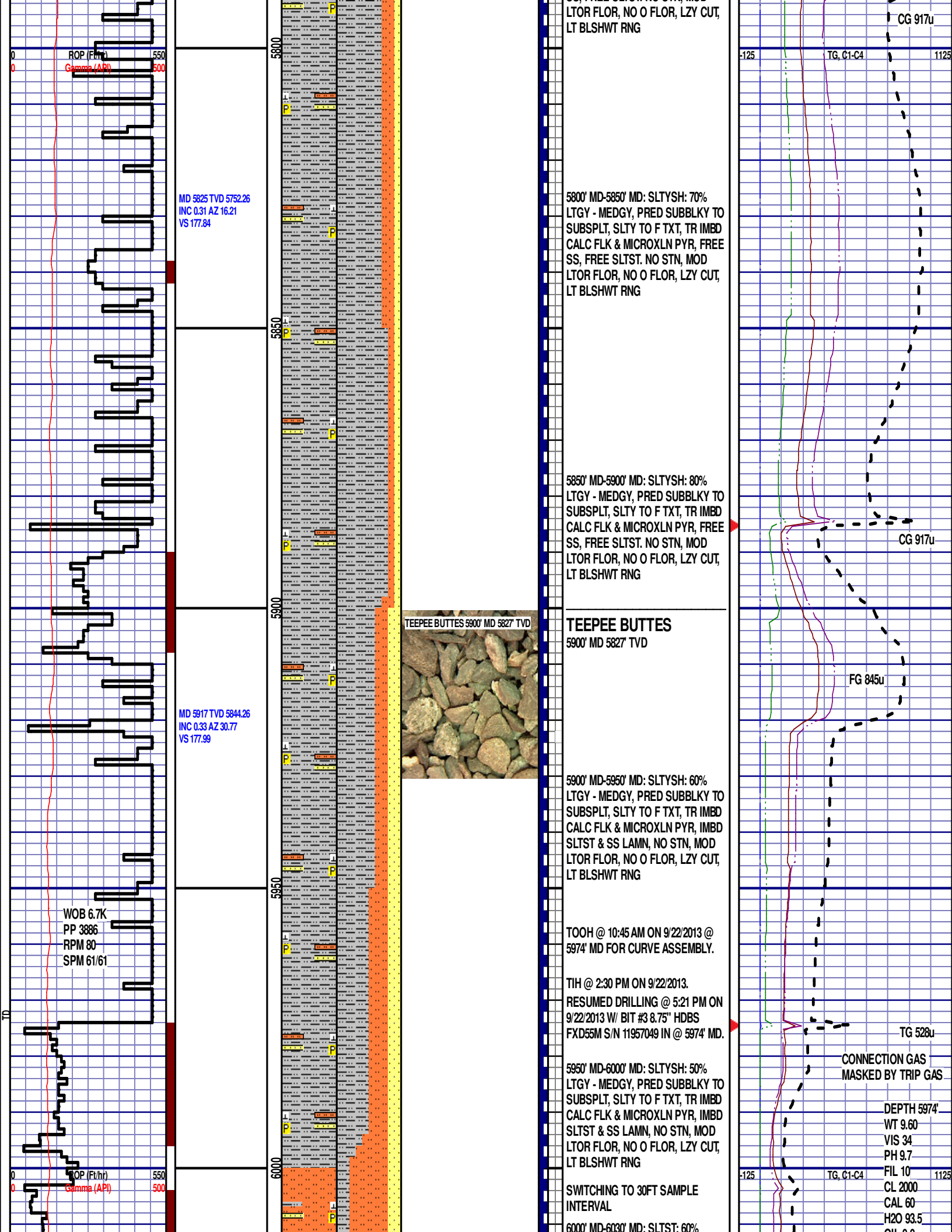
-125 1125

CG 541u

EQUIPMENT ERROR FROM 5460'
MD TO 5473' MD

CG 517u





MD 6012 TVD 5939.26
INC 0.63 AZ 101.2
VS 178.63

MD 6107 TVD 6033.68
INC 10.64 AZ 98.82
VS 187.93

MD 6201 TVD 6123.83
INC 21.66 AZ 98.25
VS 214.03

ROP (Ft/hr)
Gamma (API)

6050

6100

6150

6200

PRED DRKGY - MEDLTGY, FRI, FN
TO MED GRN, W SRTD, CALC CMT,
SANDY, IMBD PYR, FREE SLTY SH,
INTGR POR, NO STN, NO FLOR, NO
O FLOR, SLOW LZY STRM, LT
BRIYL RNG

6030' MD-6060' MD: SLTST: 60%
PRED DRKGY - MEDLTGY, FRI, FN
TO MED GRN, W SRTD, CALC CMT,
SANDY, IMBD PYR, FREE SLTY SH,
INTGR POR, NO STN, NO FLOR, NO
O FLOR, SLOW LZY STRM, LT
BRIYL RNG

6060' MD-6090' MD: SLTST: 60%
PRED DRKGY - MEDLTGY, FRI, FN
TO MED GRN, W SRTD, CALC CMT,
SANDY, IMBD PYR, FREE SLTY SH,
INTGR POR, NO STN, NO FLOR, NO
O FLOR, SLOW LZY STRM, LT
BRIYL RNG

6090' MD-6120' MD: SLTST: 60%
PRED DRKGY - MEDLTGY, FRI, FN
TO MED GRN, W SRTD, CALC CMT,
SANDY, IMBD PYR, FREE SLTY SH,
INTGR POR, NO STN, NO FLOR, NO
O FLOR, SLOW LZY STRM, LT
BRIYL RNG

6120' MD-6150' MD: SLTST: 60%
PRED DRKGY - MEDLTGY, FRI, FN
TO MED GRN, W SRTD, CALC CMT,
SANDY, IMBD PYR, FREE SLTY SH,
INTGR POR, NO STN, NO FLOR, NO
O FLOR, SLOW LZY STRM, LT
BRIYL RNG

6150' MD-6180' MD: SLTST: 60%
PRED DRKGY - MEDLTGY, FRI, FN
TO MED GRN, W SRTD, CALC CMT,
SANDY, IMBD PYR, FREE SLTY SH,
INTGR POR, NO STN, NO FLOR, NO
O FLOR, SLOW LZY STRM, LT
BRIYL RNG

6180' MD-6210' MD: SLTST: 60%
PRED DRKGY - MEDLTGY, FRI, FN
TO MED GRN, W SRTD, CALC CMT,
SANDY, IMBD PYR, FREE SLTY SH,
INTGR POR, NO STN, NO FLOR, NO
O FLOR, SLOW LZY STRM, LT
BRIYL RNG

6210' MD-6240' MD: SLTY SH: 60%
MEDDRKGY - MEDLTGY, BLKY TO
SUBBLKY, GRTY TO SLTY TXT, FRM
TO BRIT, SLTST & SS LAMN, FREE
CAL, FREE PYR, NO STN, NO FLOR

OIL 0.0
LGS 27.3
GEL 3/30/42
PV 10
YP 8
CK 20
SOL 6.2

CG 187u

FG 346u

TRAP TEST
1237u

CONNECTION GAS
MASKED BY TRAP
TEST

TEEPEE BUTTES 6210' MD 6131' TVD



-125

TG, C1-C4

1125

WOB 23.6K
PP 3627
RPM 0
SPM 66/66

MD 6296 TVD 6208.11
INC 32.95 AZ 96.82
VS 257.53

MD 6344 TVD 6246.84
INC 39.43 AZ 90.7
VS 285.78

MD 6391 TVD 6282.03
INC 43.62 AZ 86.69
VS 316.61

MD 6439 TVD 6316.37
INC 45.03 AZ 86.68
VS 349.63

ROP (Ft/hr)
Gamma (API)

12:01 AM
9/23/13
DAY 03
FT/24HRS 3385

CAL, FREE PYR, NO STN, 5% FLOR,
NO O FLOR, FAST STRMG CUT,
MOD BLSHWT RNG

6240' MD-6270' MD: SLTY SH: 60%
MEDDRKGY -MEDLTGY, BLKY TO
SUBBLKY, GRTY TO SLTY TXT, FRM
TO BRIT, SLTST & SS LAMN, FREE
CAL, FREE PYR, NO STN, 5% FLOR,
NO O FLOR, FAST STRMG CUT,
MOD BLSHWT RNG

6270' MD-6300' MD: SLTY SH: 60%
MEDDRKGY -MEDLTGY, BLKY TO
SUBBLKY, GRTY TO SLTY TXT, FRM
TO BRIT, SLTST & SS LAMN, FREE
CAL, FREE PYR, NO STN, 5% FLOR,
NO O FLOR, FAST STRMG CUT,
MOD BLSHWT RNG

6300' MD-6330' MD: SLTY SH: 60%
MEDDRKGY -MEDLTGY, BLKY TO
SUBBLKY, GRTY TO SLTY TXT, FRM
TO BRIT, SLTST & SS LAMN, FREE
CAL, FREE PYR, NO STN, 5% FLOR,
NO O FLOR, FAST STRMG CUT,
MOD BLSHWT RNG

6330' MD-6360' MD: SLTY SH: 60%
MEDDRKGY -MEDLTGY, BLKY TO
SUBBLKY, GRTY TO SLTY TXT, FRM
TO BRIT, SLTST & SS LAMN, FREE
CAL, FREE PYR, NO STN, 5% FLOR,
NO O FLOR, FAST STRMG CUT,
MOD BLSHWT RNG

6360' MD-6390' MD: SLTST: 70%
PRED DRKGY - MEDLTGY, FRI, FN
TO MED GRN, W SRTD, CALC CMT,
IMBD SS LAMN, IMBD PYR, FREE
SH, INTGR POR, NO STN, NO FLOR,
NO O FLOR, FAST STRMG CUT,
MOD BLSHWT RNG

6390' MD-6420' MD: SLTST: 70%
PRED DRKGY - MEDLTGY, FRI, FN
TO MED GRN, W SRTD, CALC CMT,
IMBD SS LAMN, IMBD PYR, FREE
SH, INTGR POR, NO STN, NO FLOR,
NO O FLOR, FAST STRMG CUT,
MOD BLSHWT RNG

6420' MD-6450' MD: SLTST: 70%
PRED DRKGY - MEDLTGY, FRI, FN
TO MED GRN, W SRTD, CALC CMT,
IMBD SS LAMN, IMBD PYR, FREE
SH, INTGR POR, NO STN, NO FLOR,
NO O FLOR, FAST STRMG CUT,
MOD BLSHWT RNG

CG 345u

CG 437u

Scale Change
TG, C1-C4

GAS SCALE: -250 TO 2250
(250 UNITS/DIVISION)

CG 440u

WOB 14.8K
PP 3842
RPM 30
SPM 64/64

MD 6486 TVD 6349.32
INC 45.93 AZ 87.02
VS 382.64

MD 6534 TVD 6381.64
INC 49.41 AZ 87.67
VS 417.64

MD 6581 TVD 6411.33
INC 52.23 AZ 87.65
VS 453.61

MD 6629 TVD 6439.74
INC 55.17 AZ 87.25
VS 491.78

ROP (Ft/hr)
Gamma (API)

550
500

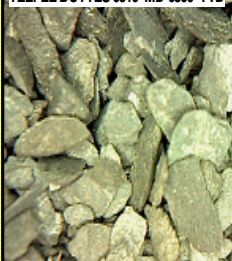
6500

6550

6600

6650

TEEPEE BUTTES 6510' MD 6366' TVD



SHARON SPRINGS 6540' MD 6386' TVD



NIOBRARA A CHALK 6600' MD 6423' TVD



6450' MD-6480' MD: SLTST: 70%
PRED DRKG - MEDLTGY, FRI, FN
TO MED GRN, W SRTD, CALC CMT,
IMBD SS LAMN, IMBD PYR, FREE
SH, INTGR POR, NO STN, NO FLOR,
NO O FLOR, FAST STRMG CUT,
MOD BLSHW RING

6480' MD-6510' MD: SLTY SH: 60%
MEDDRKG - MEDLTGY, BLKY TO
SUBBLKY, GRTY TO SLTY TXT, FRM
TO BRIT, SLTST & SS LAMN, FREE
CAL, FREE PYR, NO STN, 5% FLOR,
NO O FLOR, FAST STRMG CUT,
MOD BLSHW RING

6510' MD-6540' MD: SLTY SH: 80%
MEDDRKG - MEDLTGY, BLKY TO
SUBBLKY, GRTY TO SLTY TXT, FRM
TO BRIT, IMBD SLTST & SS LAMN,
FREE CAL, FREE PYR, FREE BENT,
NO STN, 20% FLOR, NO O FLOR,
FAST STRMG CUT, FNT DRKYL RING

SHARON SPRINGS

6540' MD 6386' TVD

6540' MD-6570' MD: MRL: 45%
MEDDRKG - DRKG,
BLKY TO SUBBLKY, FXLN TO
CHLKY, FRM TO FRI, CHK FRMWRK,
IMBD CAL, FREE PYR, FREE BENT,
TT - PP POR, NO STN, 10% LTOR
FLOR, FNT BLSHW O FLOR,
IMMED STRMG CUT

6570' MD-6600' MD: MRL: 45%
MEDDRKG - DRKG,
BLKY TO SUBBLKY, FXLN TO
CHLKY, FRM TO FRI, CHK FRMWRK,
IMBD CAL, FREE PYR, FREE BENT,
TT - PP POR, NO STN, 10% LTOR
FLOR, FNT BLSHW O FLOR,
IMMED STRMG CUT

NIOBRARA A CHALK

6600' MD 6423' TVD

6600' MD-6630' MD: CHK: 55% V/LTGY
- MEDGY -DRKG, BLKY TO
SUBBLKY, IMBD PYRC SPEC, FREE
BENT, OCC FREE CAL, FREE SH,
MOD GYSHBLK STN, 10% LTOR
FLOR, FNT BLSHW O FLOR,
IMMED STRMG CUT

6630' MD-6660' MD: CHK: 60% V/LTGY
- MEDGY -DRKG, BLKY TO
SUBBLKY, IMBD PYRC SPEC, FREE
BENT, OCC FREE CAL, FREE SH,
MOD GYSHBLK STN, 10% LTOR
FLOR, FNT BLSHW O FLOR,
IMMED STRMG CUT

6660' MD-6690' MD: CHK: 55% V/LTGY
- MEDGY -DRKG, BLKY TO

CG 1009u

DEPTH 6640'
WT 10.2
VIS 40
PH 9.6
FIL 9.0
CL 2200
CAL 60
H2O 91.5
OIL 0.0
LGS 22.9

TG, C1-C4
GEL 5/40/64
PV 11
YP 12
CK 1/0
SOL 8.2

CG 1611u

WOB 33.9K
PP 3788
RPM 0
SPM 64/63

MD 6676 TVD 6466
INC 56.91 AZ 86.88
VS 456.67

MD 6724 TVD 6491.39
INC 59.21 AZ 86.08
VS 570.28

6700

6750

00

NIOBRARA A MARL 6690' MD 6474'
TVD



SUBBLKY, IMBD PYRC SPEC, FREE
BENT, OCC FREE CAL, FREE SH,
MOD GYSHBLK STN, 10% LTOR
FLOR, FNT BLSHWT O FLOR,
IMMED STRMG CUT

NIOBRARA A MARL 6690' MD 6474' TVD

6690' MD-6720' MD: MRL: 45%
MEDDRKGY - DRKGY, BLKY TO
SUBBLKY, FXLN TO CHLKY, FRM
TO FRI, CHK FRMWRK, IMBD CAL,
FREE PYR, TT - PP POR, TR
GRYSHBLK STN, 5% LTOR FLOR,
FNT BLSHWT O FLOR, IMMED
STRMG CUT, BRIYL RNG

6720' MD-6750' MDMRL: 45%
MEDDRKGY - DRKGY, BLKY TO
SUBBLKY, FXLN TO CHLKY, FRM
TO FRI, CHK FRMWRK, IMBD CAL,
FREE PYR, TT - PP POR, TR
GRYSHBLK STN, 5% LTOR FLOR,
FNT BLSHWT O FLOR, IMMED
STRMG CUT, BRIYL RNG

END OF VERTICAL LOG @ 6750' MD
ON 9/23/13, CONTINUED ON
HORIZONTAL LOG

CG 1213u