



7136 South Yale Avenue, Suite 414
Tulsa, Oklahoma 74136-6378

phone 918.925.9739

fax 866.534.4559

WWW.HZMUD.COM/25

Customer Information

Operator: Noble Energy Inc
1625 Broadway
Suite 2200
Denver, Colorado 80202

Geologist: Holly Duncan
Noble Energy Inc.

Mud Logging Details

Logger: Casey Sensecqua &
Tom Denney
Log Interval: 6650' MD to 10769' MD
Start Date: September 23, 2013
Release Date: September 25, 2013

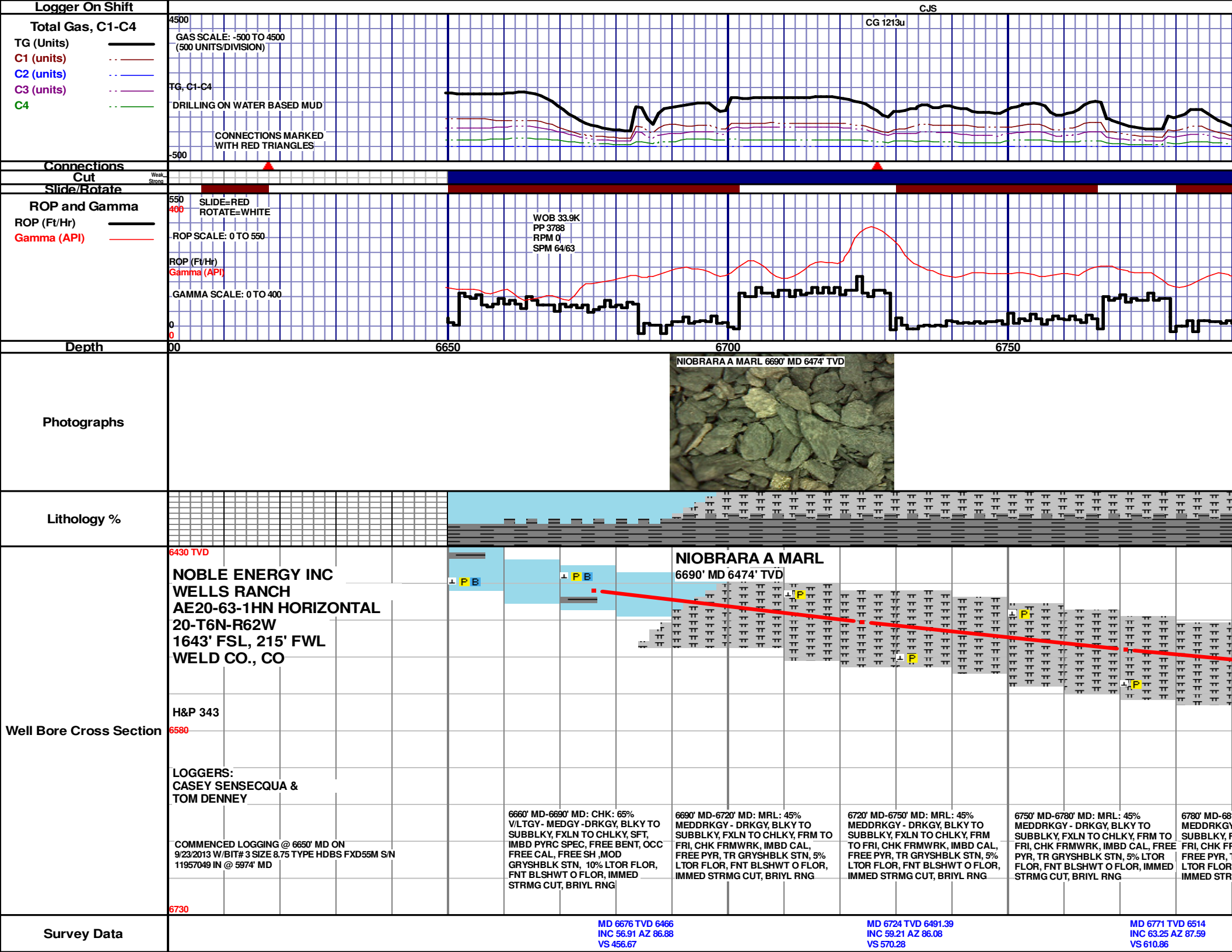
Well Information

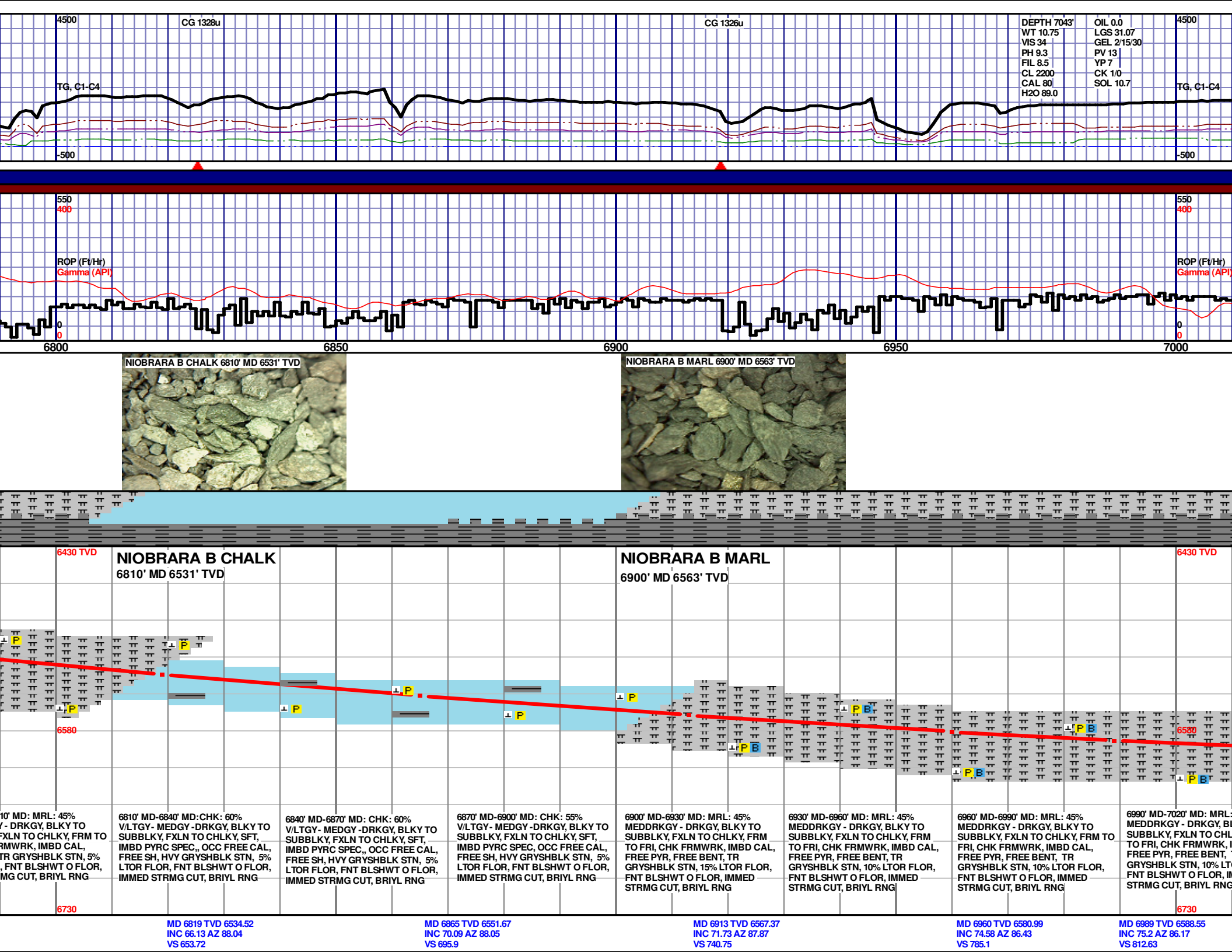
Well Name: Wells Ranch AE20-63-1HN
Horizontal

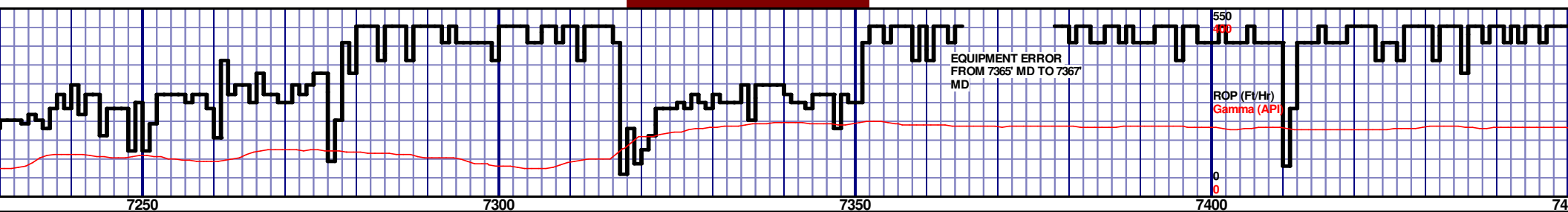
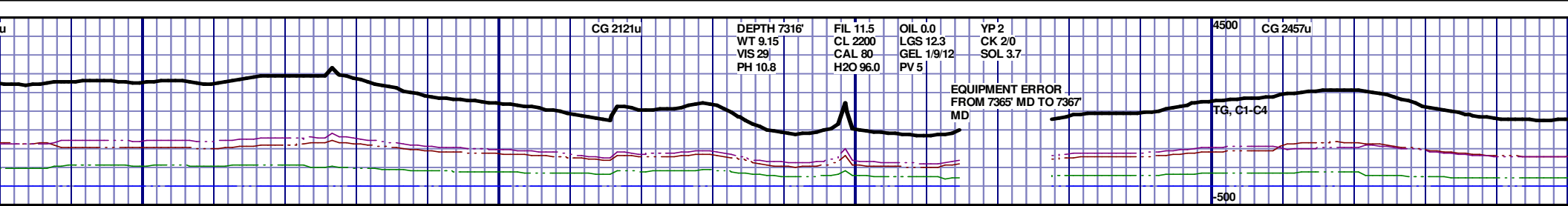
Location: 20-T6N-R62W
1643' FSL, 215' FWL

County: Weld
State: Colorado

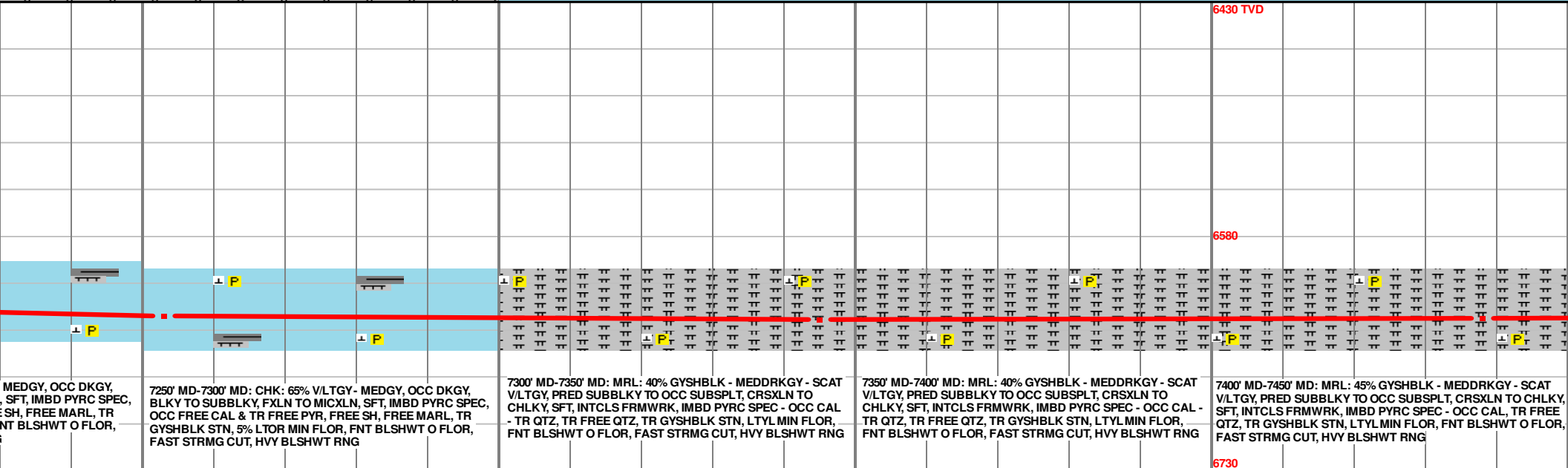
Drilling Rig: H&P 343
Total Depth: 10769' MD
TD Date: September 25, 2013
Formation: Niobrara C Chalk
KB Elevation: 4809'
GR Elevation: 4785'
API Number: 05-123-37208-0000







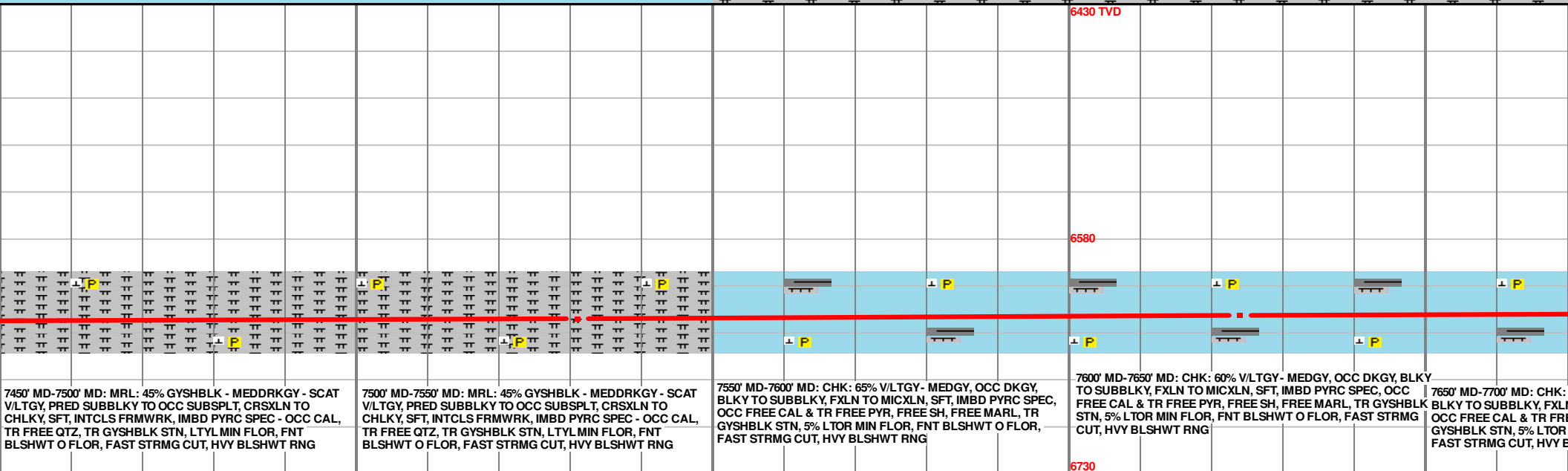
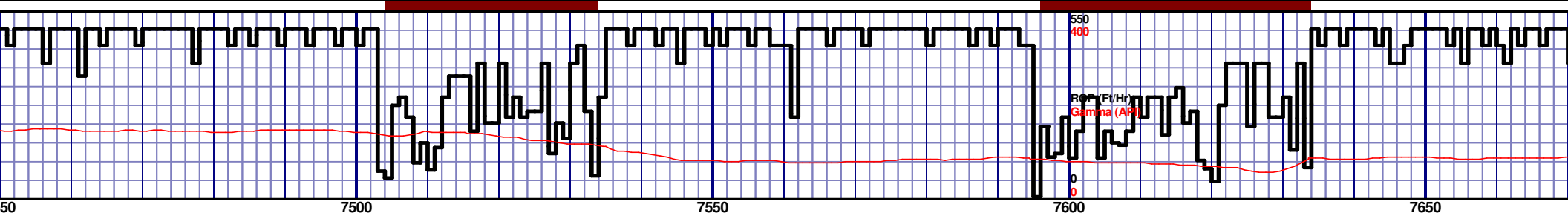
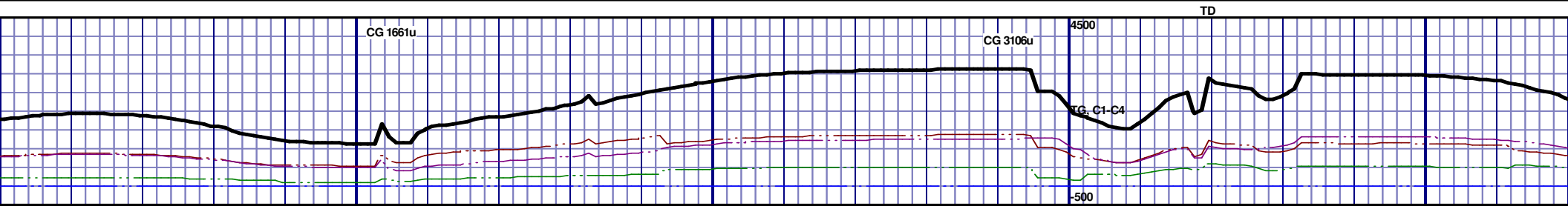
NIOBRARA C CHALK 7300' MD 6632' TVD

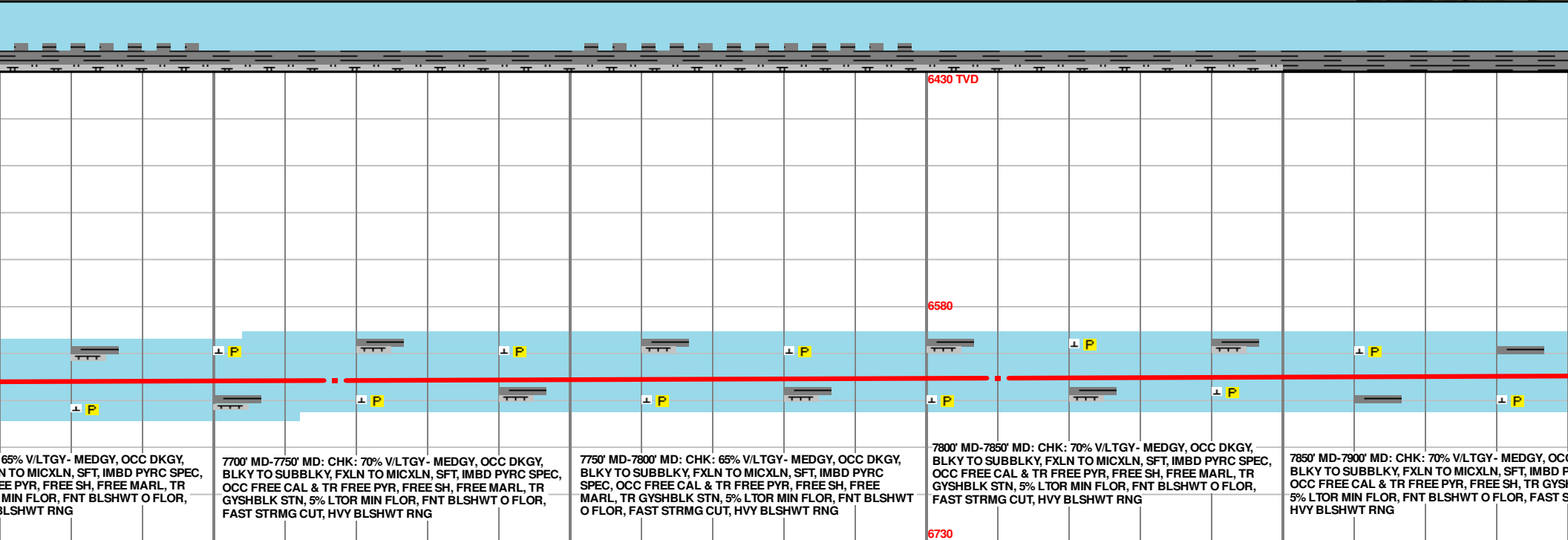
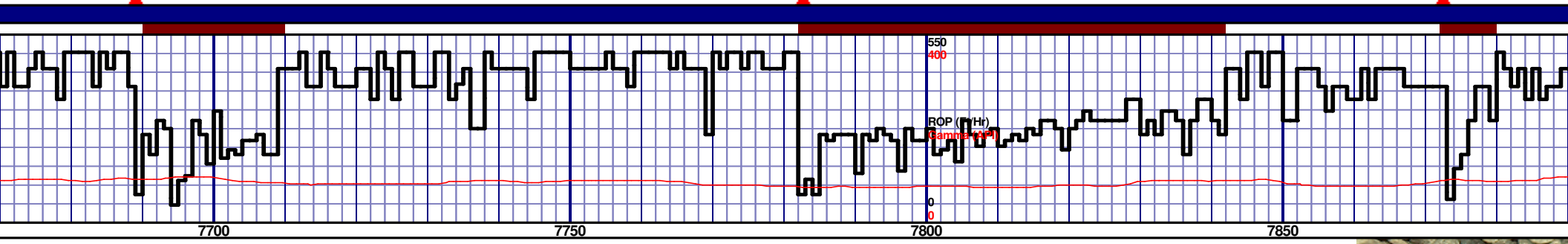
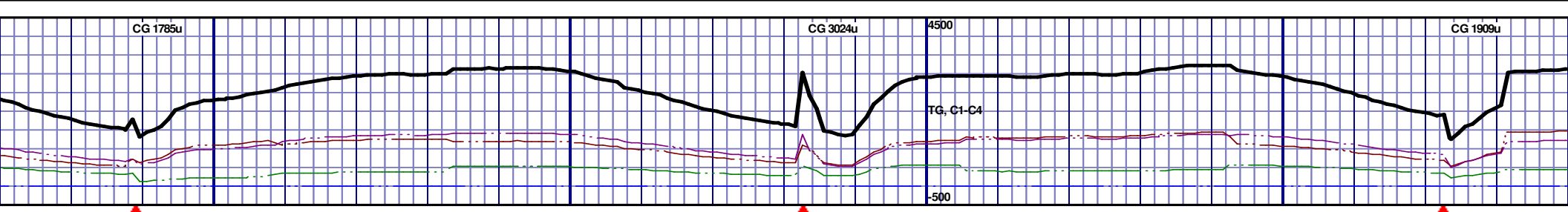


MD 7253 TVD 6630.81
INC 86.15 AZ 87.19
VS 1068.82

MD 7345 TVD 6633.23
INC 90.83 AZ 88.76
VS 1159.68

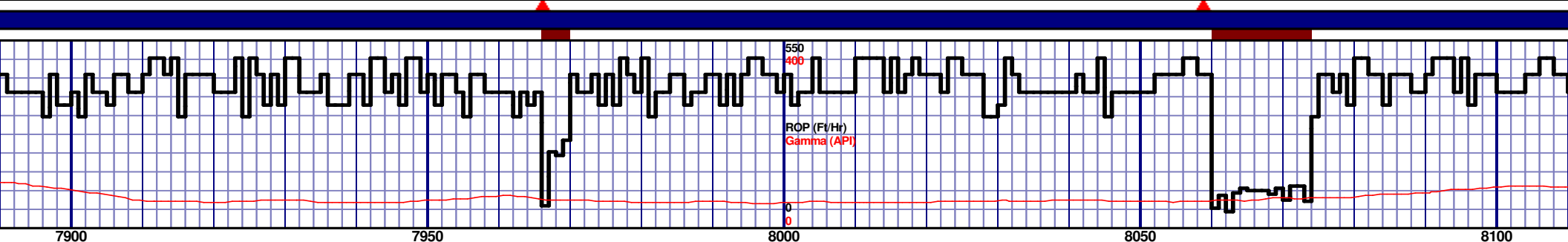
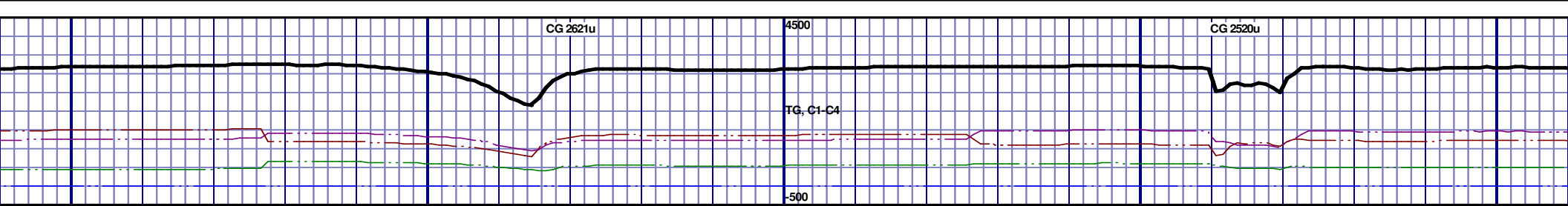
MD 7438 TVD 6635.23
INC 90.34 AZ 88.76
VS 1251.39



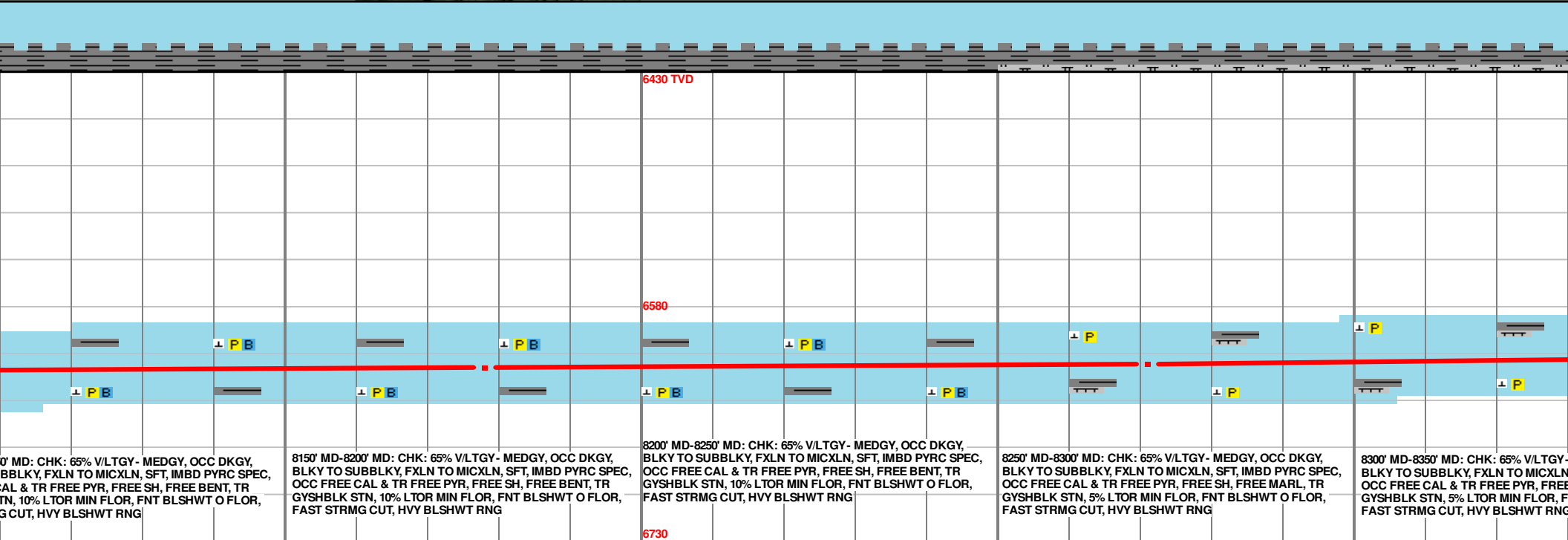
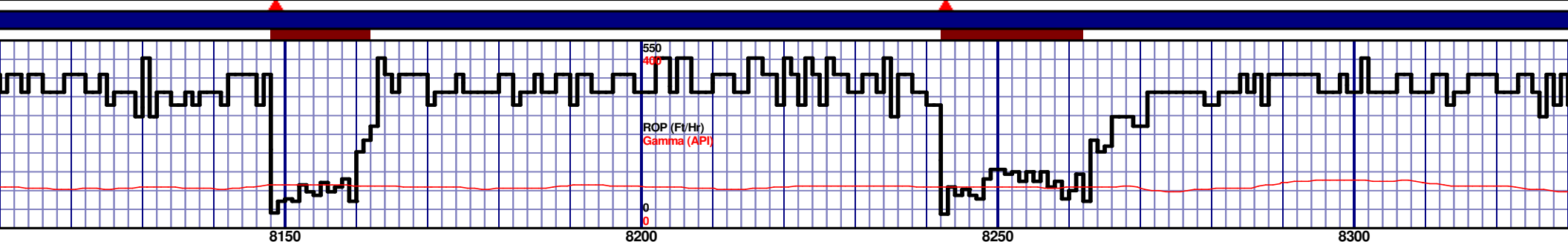
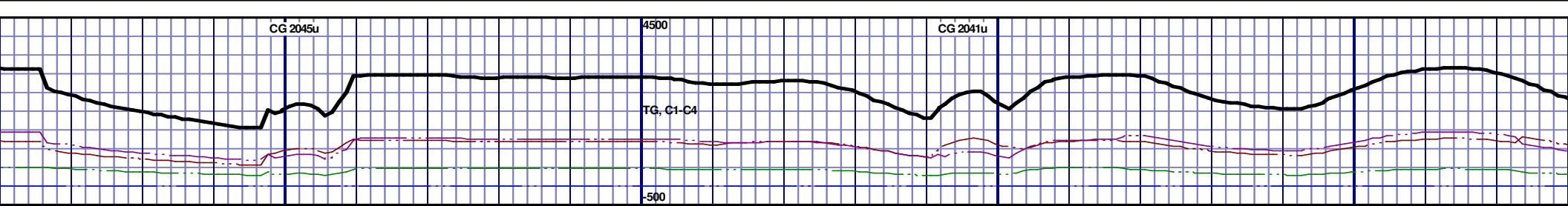


MD 7717 TVD 6627.25
INC 90.74 AZ 84.71
VS 1525.28

MD 7810 TVD 6625.86
INC 90.98 AZ 89.44
VS 1616.92



6430 TVD									
6580									
6730									
6730									
6730									
6730									
6730									
6730									
6730									
6730									
6730									
6730									
6730									
6730									
6730									
6730									
6730									
6730									
6730									
6730									
6730									
6730									
6730									
6730									
6730									
6730									
6730									
6730									
6730									
6730									
6730									
6730									
6730									
6730									
6730									
6730									
6730									
6730									
6730									
6730									
6730									
6730									
6730									
6730									
6730									
6730									
6730									
6730									
6730									
6730									
6730									
6730									
6730									
6730									
6730									
6730									
6730									
6730									
6730									
6730									
6730									
6730									
6730									
6730									
6730									
6730									
6730									
6730									
6730									
6730									
6730									
6730									
6730									
6730									
6730									
6730									
6730									
6730									
6730									
6730									
6730									
6730									
6730									
6730									
6730									
6730									
6730									
6730									
6730									
6730									
6730									
6730									
6730									
6730									
6730									
6730									
6730									
6730									
6730									
6730									
6730									
6730									
6730									
6730									
6730									
6730									
6730									
6730									
6730									
6730									
6730									
6730									
6730									
6730									
6730									
6730									
6730									
6730									
6730									
6730									
6730									
6730									
6730									
6730									
6730									
6730									
6730									
6730									
6730									
6730									
6730									
6730									
6730									
6730									
6730									
6730									
6730									
6730									
6730									
6730									
6730									
6730									
6730									
6730									
6730									
6730									
6730									
6730									
6730									
6730									
6730									
6730									
6730									
6730									
6730									
6730									
6730									
6730									
6730									
6730									
6730									
6730									
6730									
6730									
6730									
6730									
6730									
6730									
6730									
6730									
6730									
6730									
6730									
6730									
6730									
6730									
6730									
6730									
6730									
6730									
6730									
6730									
6730									
6730									
6730									
6730									
6730									
6730									
6730									
6730									
6730									
6730									
6730									
6730									
6730									
6730									
6730									
6730									
6730									
6730									
6730									
6730									
6730									
6730									
6730									
6730									
6730									
6730									
6730									
6730									
6730									
6730									
6730									
6730									
6730									
6730									
6730									
6730									
6730									
6730									
6730									
6730									
6730									
6730									
6730									
6730									
6730									
6730									
6730									
6730									
6730									
6730									
6730									
6730									
6730									
6730									
6730									
6730									
6730									
6730									
6730									
6730									
6730									
6730									
6730									
6730									
6730									
6730									
6730									
6730									
6730									
6730									
6730									
6730									
6730									
6730									
6730									
6730									
6730									
6730									
6730									
6730									
6730									
6730									
6730									
6730									
6730									
6730									
6730									
6730									
6730									
6730									
6730									
6730									
6730									
6730									
6730									
6730									
6730									
6730									
6730									
6730									
6730									
6730									
6730									
6730									
6730									
6730									
6730									
6730									
6730									
6730									
6730									
6730									
6730									
6730									
6730									
6730									
6730									
6730									
6730									
6730									
6730									
6730									
6730									
6730									
6730									
6730									
6730									
6730									
6730									
6730									
6730									
6730									
6730									
6730									
6730									
6730									
6730									
6730									
6730									
6730									
6730									
6730									
6730									
6730									
6730									
6730									
6730									
6730									
6730									
6730									
6730									
6730									
6730									
6730									
6730									
6730									
6730									
6730									
6730									
6730									
6730									
6730									
6730									
6730									
6730									
6730									
6730									
6730									
6730									
6730									
6730									
6730									
6730									
6730									
6730									
6730									
6730									
6730									
6730									
6730									



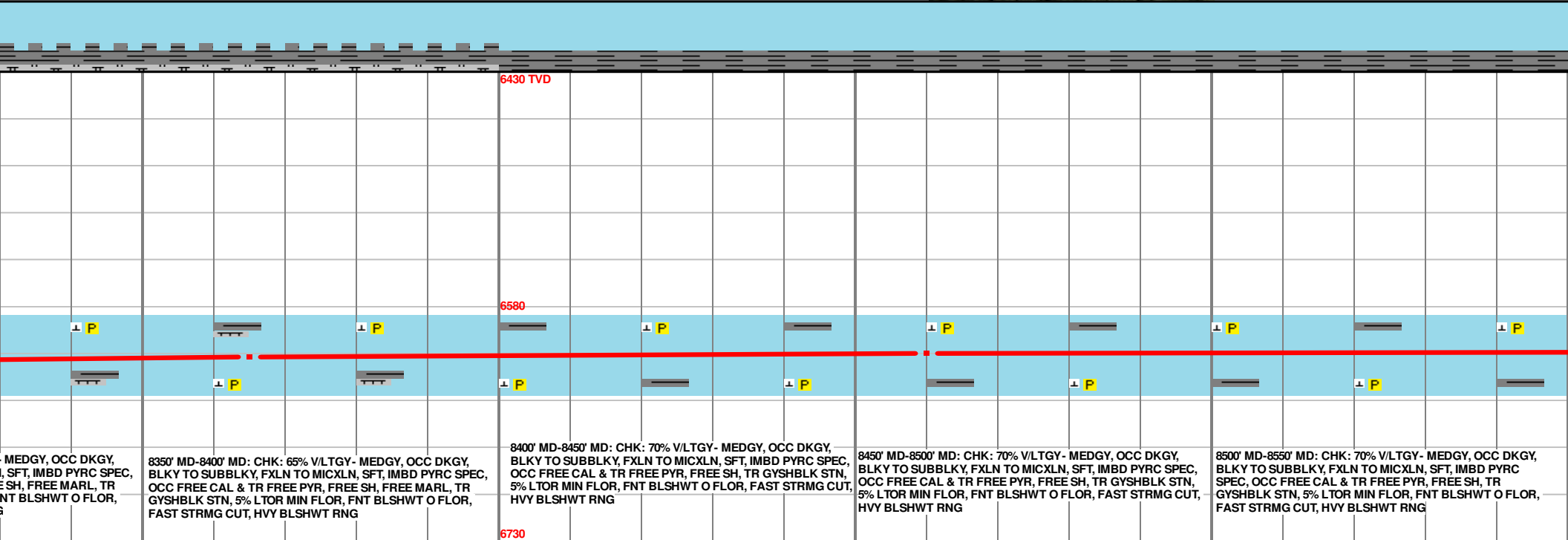
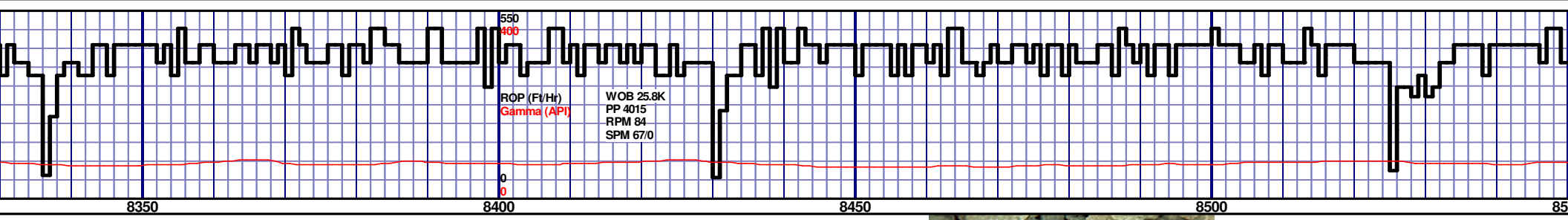
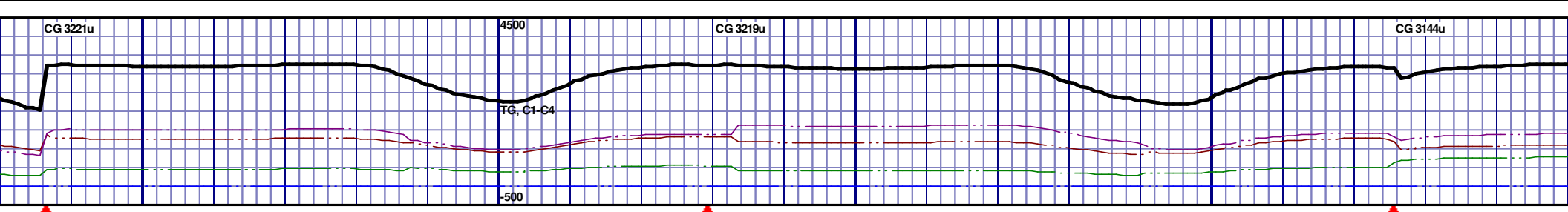
0' MD: CHK: 65% V/LTGY - MEDGY, OCC DKG, BLKY TO SUBBLKY, FXLN TO MICXLN, SFT, IMBD PYRC SPEC, CAL & TR FREE PYR, FREE SH, FREE BENT, TR GYSHBLK STN, 10% LTOR MIN FLOR, FNT BLSHWT O FLOR, G CUT, HVY BLSHWT RNG

8150' MD-8200' MD: CHK: 65% V/LTGY - MEDGY, OCC DKG, BLKY TO SUBBLKY, FXLN TO MICXLN, SFT, IMBD PYRC SPEC, OCC FREE CAL & TR FREE PYR, FREE SH, FREE BENT, TR GYSHBLK STN, 10% LTOR MIN FLOR, FNT BLSHWT O FLOR, FAST STRMG CUT, HVY BLSHWT RNG

8200' MD-8250' MD: CHK: 65% V/LTGY - MEDGY, OCC DKG, BLKY TO SUBBLKY, FXLN TO MICXLN, SFT, IMBD PYRC SPEC, OCC FREE CAL & TR FREE PYR, FREE SH, FREE BENT, TR GYSHBLK STN, 10% LTOR MIN FLOR, FNT BLSHWT O FLOR, FAST STRMG CUT, HVY BLSHWT RNG

8250' MD-8300' MD: CHK: 65% V/LTGY - MEDGY, OCC DKG, BLKY TO SUBBLKY, FXLN TO MICXLN, SFT, IMBD PYRC SPEC, OCC FREE CAL & TR FREE PYR, FREE SH, FREE MARL, TR GYSHBLK STN, 5% LTOR MIN FLOR, FNT BLSHWT O FLOR, FAST STRMG CUT, HVY BLSHWT RNG

8300' MD-8350' MD: CHK: 65% V/LTGY - MEDGY, OCC DKG, BLKY TO SUBBLKY, FXLN TO MICXLN, SFT, IMBD PYRC SPEC, OCC FREE CAL & TR FREE PYR, FREE SH, FREE MARL, TR GYSHBLK STN, 5% LTOR MIN FLOR, FNT BLSHWT O FLOR, FAST STRMG CUT, HVY BLSHWT RNG



MEDGY, OCC DKG, SFT, IMBD PYRC SPEC, SH, FREE MARL, TR GYSHBLK STN, 5% LTOR MIN FLOR, FNT BLSHWT O FLOR, FAST STRMG CUT, HVY BLSHWT RNG

8350' MD-8400' MD: CHK: 65% V/LTGY - MEDGY, OCC DKG, BLKY TO SUBBLKY, FXLN TO MICXLN, SFT, IMBD PYRC SPEC, OCC FREE CAL & TR FREE PYR, FREE SH, FREE MARL, TR GYSHBLK STN, 5% LTOR MIN FLOR, FNT BLSHWT O FLOR, FAST STRMG CUT, HVY BLSHWT RNG

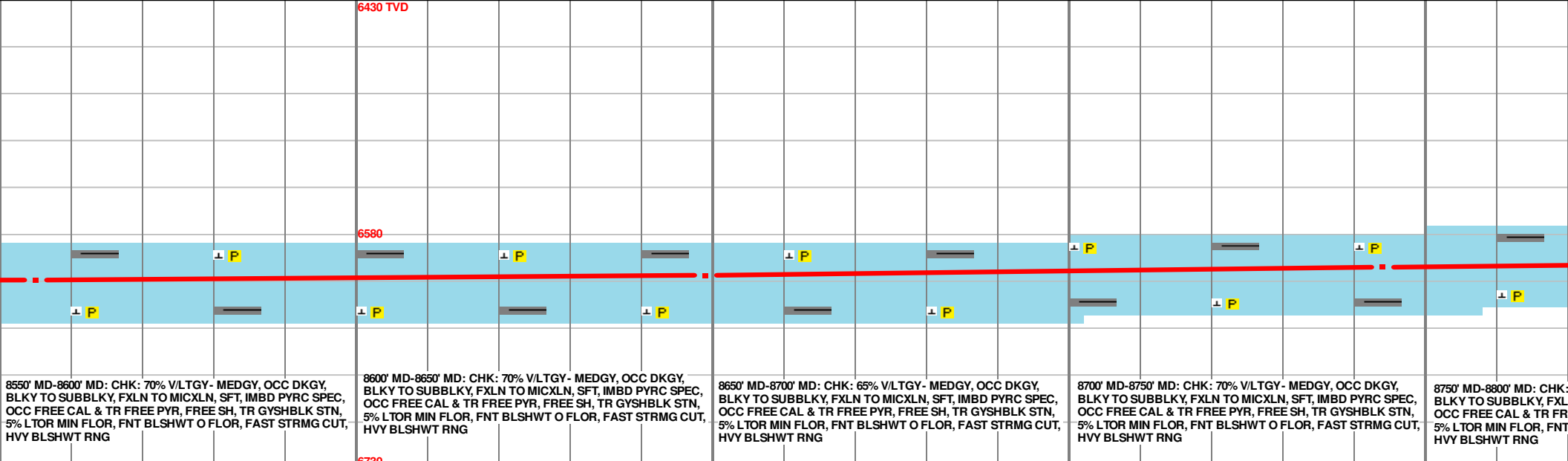
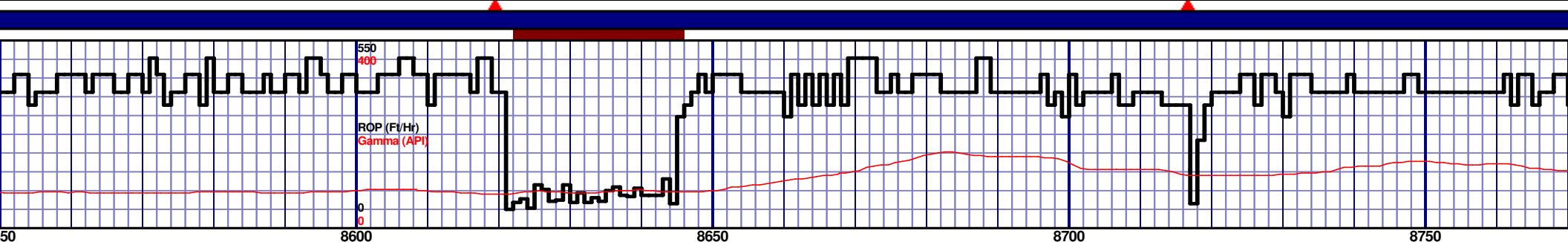
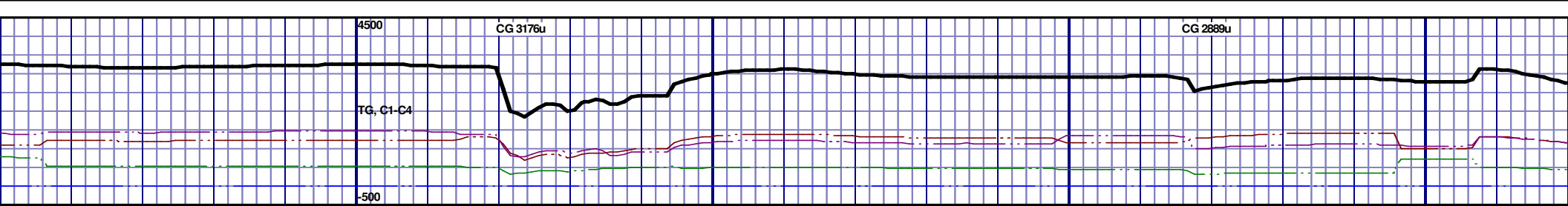
8400' MD-8450' MD: CHK: 70% V/LTGY - MEDGY, OCC DKG, BLKY TO SUBBLKY, FXLN TO MICXLN, SFT, IMBD PYRC SPEC, OCC FREE CAL & TR FREE PYR, FREE SH, TR GYSHBLK STN, 5% LTOR MIN FLOR, FNT BLSHWT O FLOR, FAST STRMG CUT, HVY BLSHWT RNG

8450' MD-8500' MD: CHK: 70% V/LTGY - MEDGY, OCC DKG, BLKY TO SUBBLKY, FXLN TO MICXLN, SFT, IMBD PYRC SPEC, OCC FREE CAL & TR FREE PYR, FREE SH, TR GYSHBLK STN, 5% LTOR MIN FLOR, FNT BLSHWT O FLOR, FAST STRMG CUT, HVY BLSHWT RNG

8500' MD-8550' MD: CHK: 70% V/LTGY - MEDGY, OCC DKG, BLKY TO SUBBLKY, FXLN TO MICXLN, SFT, IMBD PYRC SPEC, OCC FREE CAL & TR FREE PYR, FREE SH, TR GYSHBLK STN, 5% LTOR MIN FLOR, FNT BLSHWT O FLOR, FAST STRMG CUT, HVY BLSHWT RNG

MD 8365 TVD 6612.55
INC 92.37 AZ 89.35
VS 2167.49

MD 8460 TVD 6610.08
INC 90.62 AZ 89.91
VS 2261.71



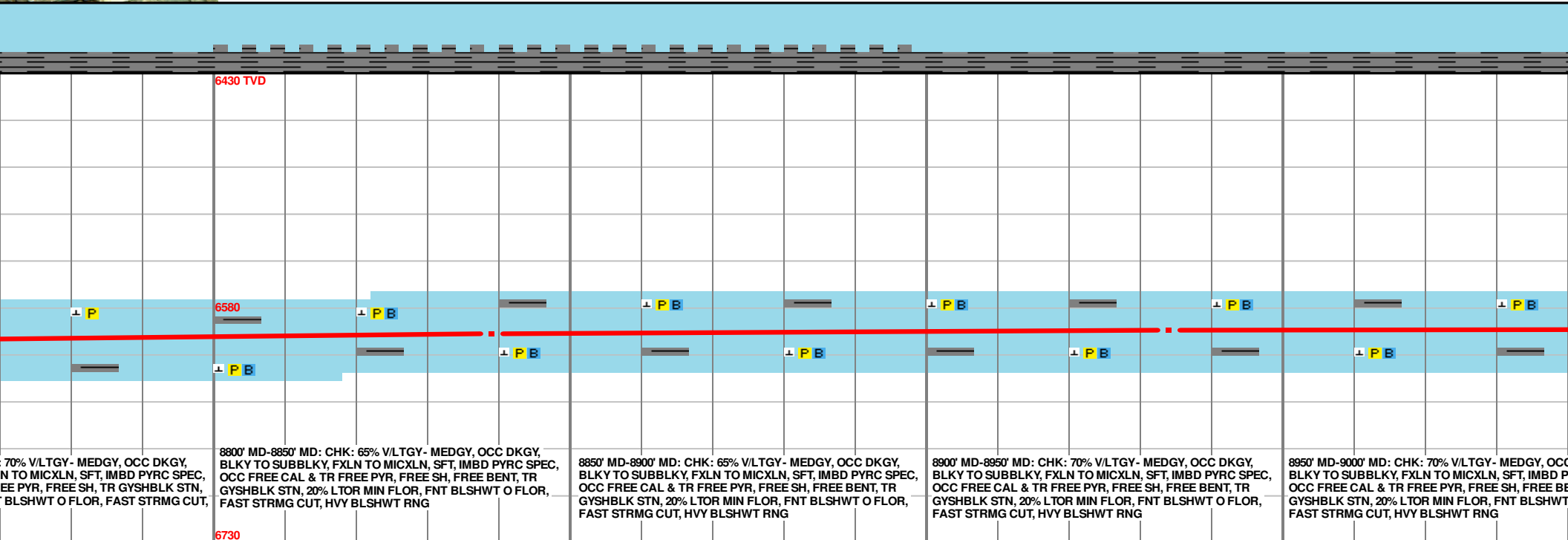
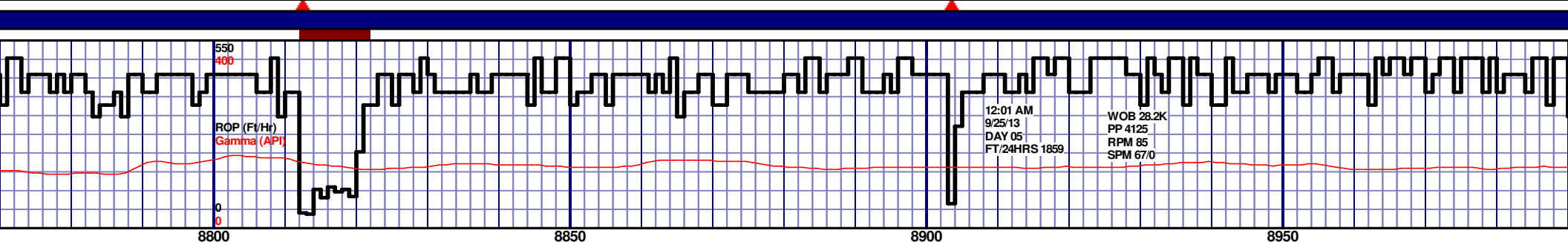
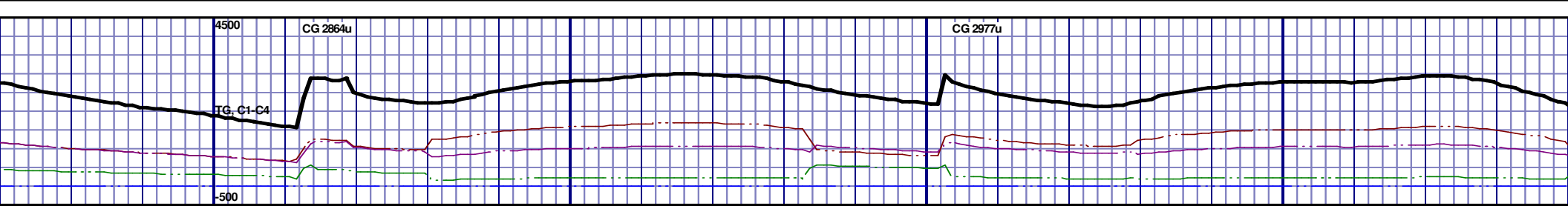
8550' MD-8600' MD: CHK: 70% V/LTGY- MEDGY, OCC DKGY, BLKY TO SUBBLKY, FXLN TO MICXLN, SFT, IMBD PYRC SPEC, OCC FREE CAL & TR FREE PYR, FREE SH, TR GYSHBLK STN, 5% LTOR MIN FLOR, FNT BLSHWT O FLOR, FAST STRMG CUT, HVY BLSHWT RNG

8600' MD-8650' MD: CHK: 70% V/LTGY- MEDGY, OCC DKGY, BLKY TO SUBBLKY, FXLN TO MICXLN, SFT, IMBD PYRC SPEC, OCC FREE CAL & TR FREE PYR, FREE SH, TR GYSHBLK STN, 5% LTOR MIN FLOR, FNT BLSHWT O FLOR, FAST STRMG CUT, HVY BLSHWT RNG

8650' MD-8700' MD: CHK: 65% V/LTGY- MEDGY, OCC DKGY, BLKY TO SUBBLKY, FXLN TO MICXLN, SFT, IMBD PYRC SPEC, OCC FREE CAL & TR FREE PYR, FREE SH, TR GYSHBLK STN, 5% LTOR MIN FLOR, FNT BLSHWT O FLOR, FAST STRMG CUT, HVY BLSHWT RNG

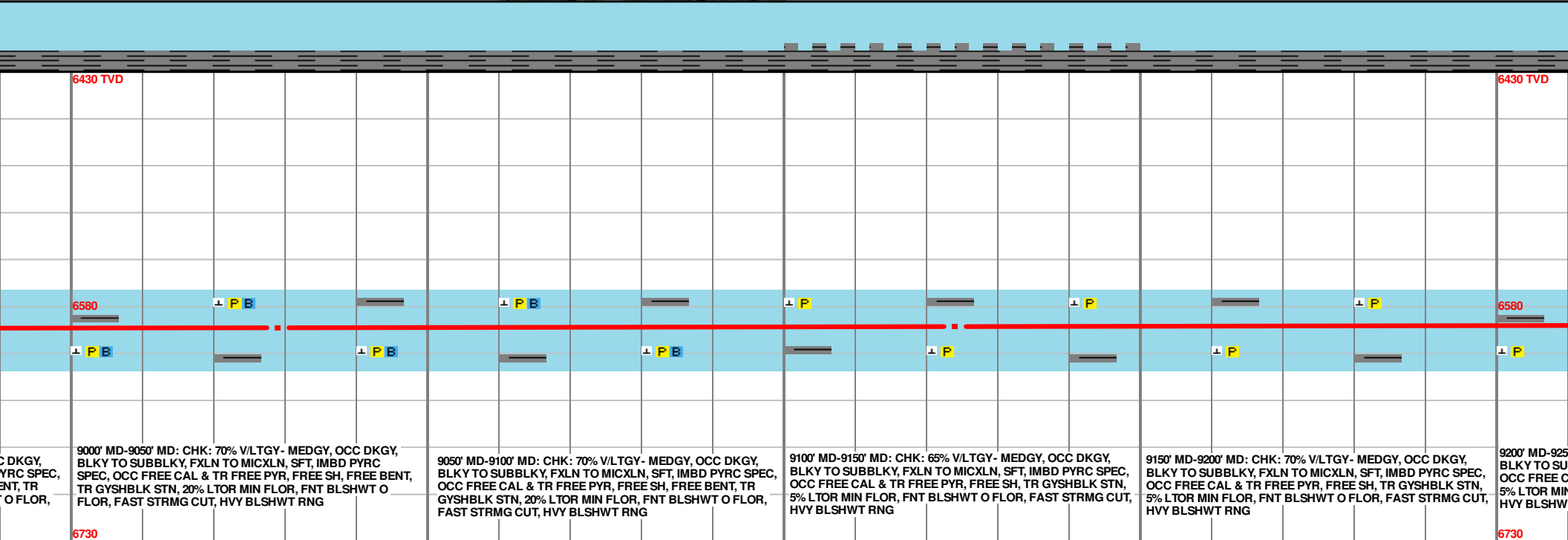
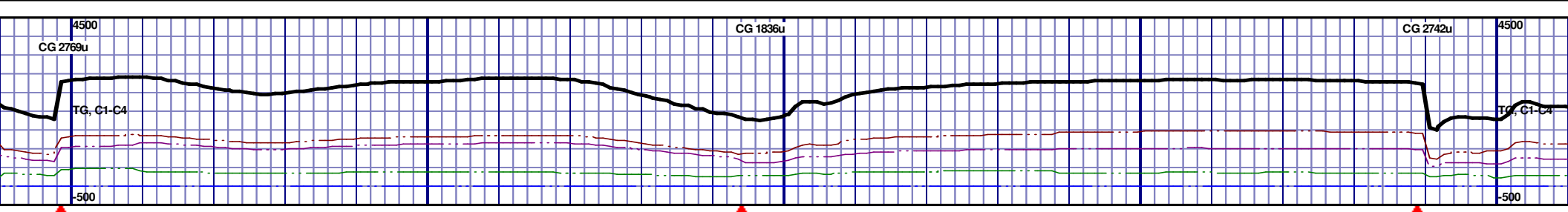
8700' MD-8750' MD: CHK: 70% V/LTGY- MEDGY, OCC DKGY, BLKY TO SUBBLKY, FXLN TO MICXLN, SFT, IMBD PYRC SPEC, OCC FREE CAL & TR FREE PYR, FREE SH, TR GYSHBLK STN, 5% LTOR MIN FLOR, FNT BLSHWT O FLOR, FAST STRMG CUT, HVY BLSHWT RNG

8750' MD-8800' MD: CHK: 70% V/LTGY- MEDGY, OCC DKGY, BLKY TO SUBBLKY, FXLN TO MICXLN, SFT, IMBD PYRC SPEC, OCC FREE CAL & TR FREE PYR, FREE SH, TR GYSHBLK STN, 5% LTOR MIN FLOR, FNT BLSHWT O FLOR, FAST STRMG CUT, HVY BLSHWT RNG



MD 8839 TVD 6596.77
INC 92.03 AZ 90.12
VS 2637.54

MD 8934 TVD 6594.5
INC 90.71 AZ 88.68
VS 2731.73



9000' MD-9050' MD: CHK: 70% V/LTGY- MEDGY, OCC DKG, BLKY TO SUBBLKY, FXLN TO MICXLN, SFT, IMBD PYRC SPEC, OCC FREE CAL & TR FREE PYR, FREE SH, FREE BENT, TR GYSHBLK STN, 20% LTOR MIN FLOR, FNT BLSHWT O FLOR, FAST STRMG CUT, HVY BLSHWT RNG

9050' MD-9100' MD: CHK: 70% V/LTGY- MEDGY, OCC DKG, BLKY TO SUBBLKY, FXLN TO MICXLN, SFT, IMBD PYRC SPEC, OCC FREE CAL & TR FREE PYR, FREE SH, FREE BENT, TR GYSHBLK STN, 20% LTOR MIN FLOR, FNT BLSHWT O FLOR, FAST STRMG CUT, HVY BLSHWT RNG

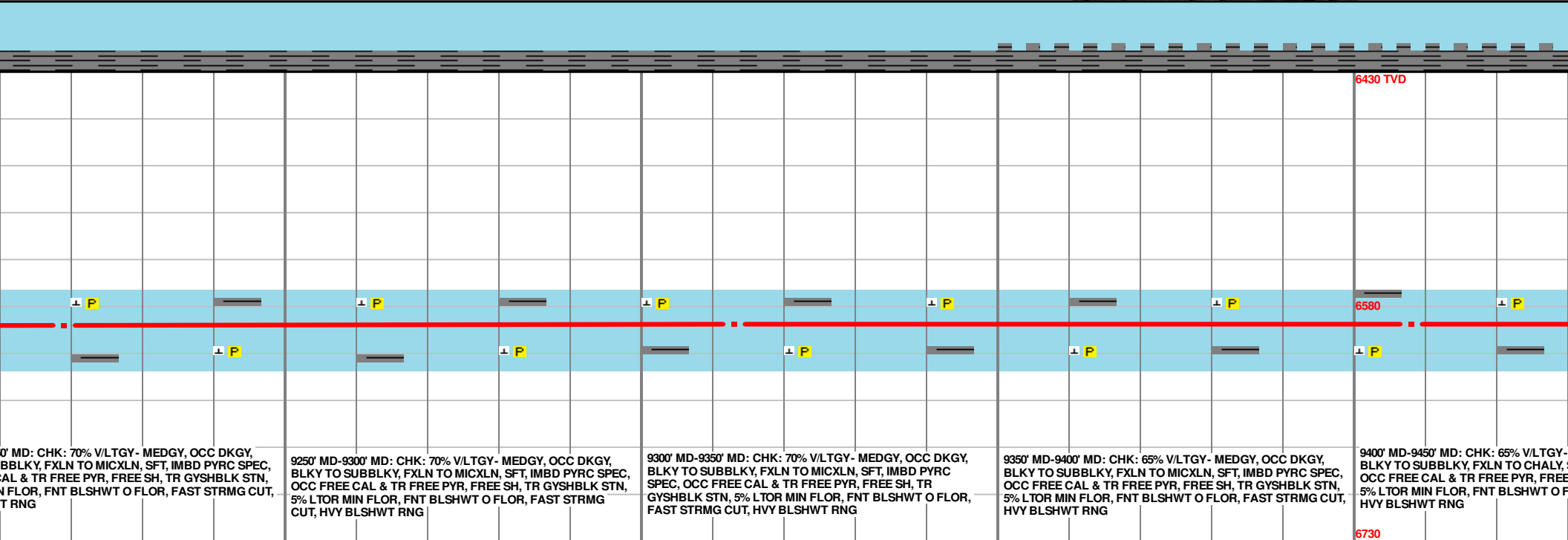
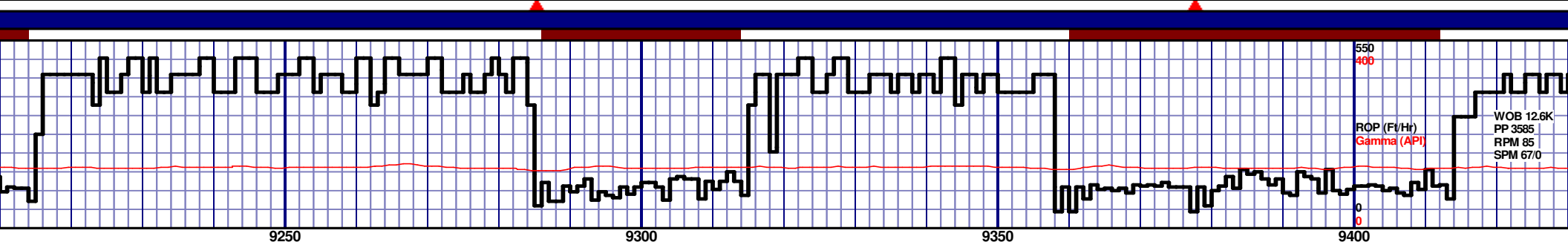
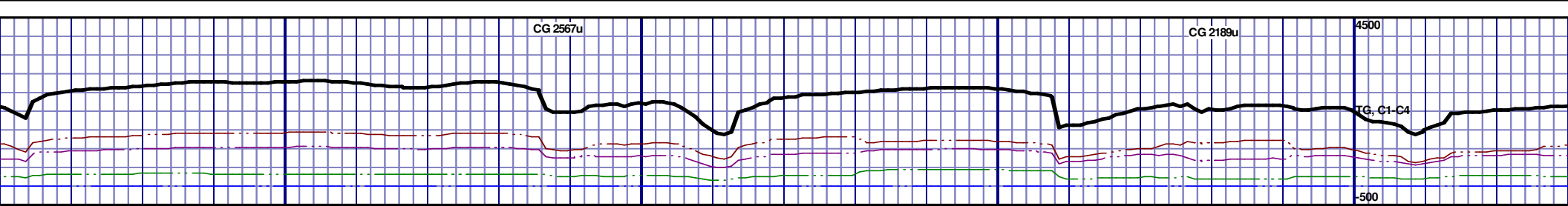
9100' MD-9150' MD: CHK: 65% V/LTGY- MEDGY, OCC DKG, BLKY TO SUBBLKY, FXLN TO MICXLN, SFT, IMBD PYRC SPEC, OCC FREE CAL & TR FREE PYR, FREE SH, TR GYSHBLK STN, 5% LTOR MIN FLOR, FNT BLSHWT O FLOR, FAST STRMG CUT, HVY BLSHWT RNG

9150' MD-9200' MD: CHK: 70% V/LTGY- MEDGY, OCC DKG, BLKY TO SUBBLKY, FXLN TO MICXLN, SFT, IMBD PYRC SPEC, OCC FREE CAL & TR FREE PYR, FREE SH, TR GYSHBLK STN, 5% LTOR MIN FLOR, FNT BLSHWT O FLOR, FAST STRMG CUT, HVY BLSHWT RNG

9200' MD-9250' MD: CHK: 70% V/LTGY- MEDGY, OCC DKG, BLKY TO SUBBLKY, FXLN TO MICXLN, SFT, IMBD PYRC SPEC, OCC FREE CAL & TR FREE PYR, FREE SH, TR GYSHBLK STN, 5% LTOR MIN FLOR, FNT BLSHWT O FLOR, FAST STRMG CUT, HVY BLSHWT RNG

MD 9029 TVD 6593.45
INC 90.55 AZ 92.31
VS 2826.14

MD 9124 TVD 6592.77
INC 90.28 AZ 92.89
VS 2920.89



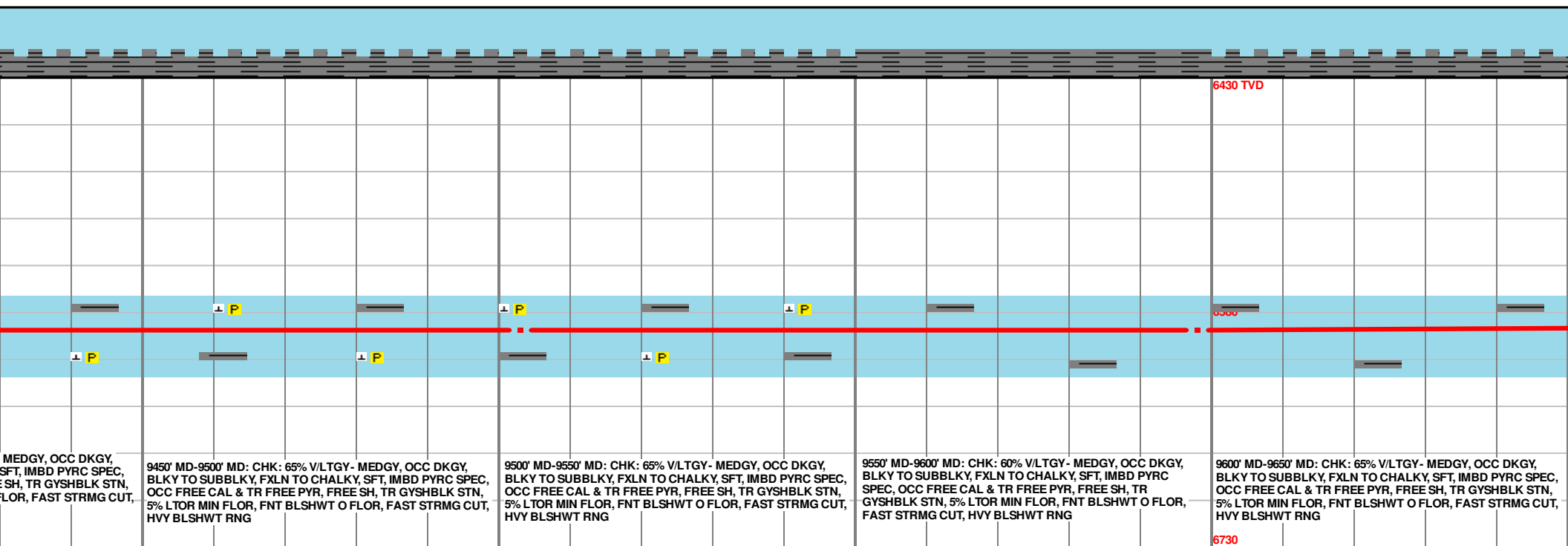
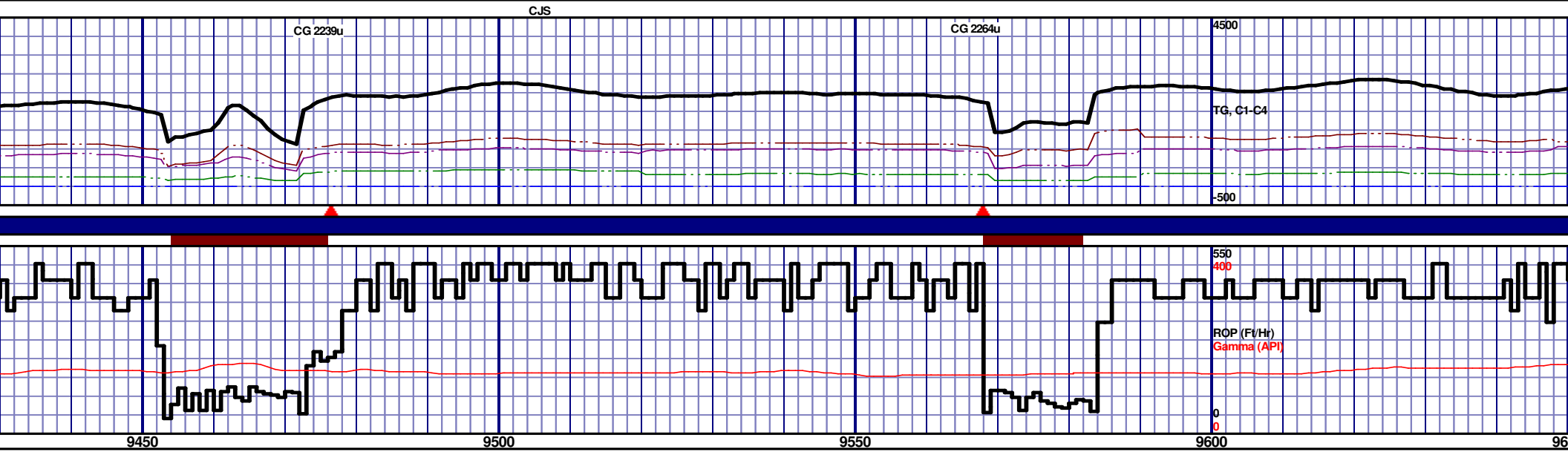
0' MD: CHK: 70% V/LTGY - MEDGY, OCC DKG, BLKY TO SUBBLKY, FXLN TO MICXLN, SFT, IMBD PYRC SPEC, OCC FREE CAL & TR FREE PYR, FREE SH, TR GYSHBLK STN, 5% LTOR MIN FLOR, FNT BLSHWT O FLOR, FAST STRMG CUT, HVY BLSHWT RNG

9250' MD-9300' MD: CHK: 70% V/LTGY - MEDGY, OCC DKG, BLKY TO SUBBLKY, FXLN TO MICXLN, SFT, IMBD PYRC SPEC, OCC FREE CAL & TR FREE PYR, FREE SH, TR GYSHBLK STN, 5% LTOR MIN FLOR, FNT BLSHWT O FLOR, FAST STRMG CUT, HVY BLSHWT RNG

9300' MD-9350' MD: CHK: 70% V/LTGY - MEDGY, OCC DKG, BLKY TO SUBBLKY, FXLN TO MICXLN, SFT, IMBD PYRC SPEC, OCC FREE CAL & TR FREE PYR, FREE SH, TR GYSHBLK STN, 5% LTOR MIN FLOR, FNT BLSHWT O FLOR, FAST STRMG CUT, HVY BLSHWT RNG

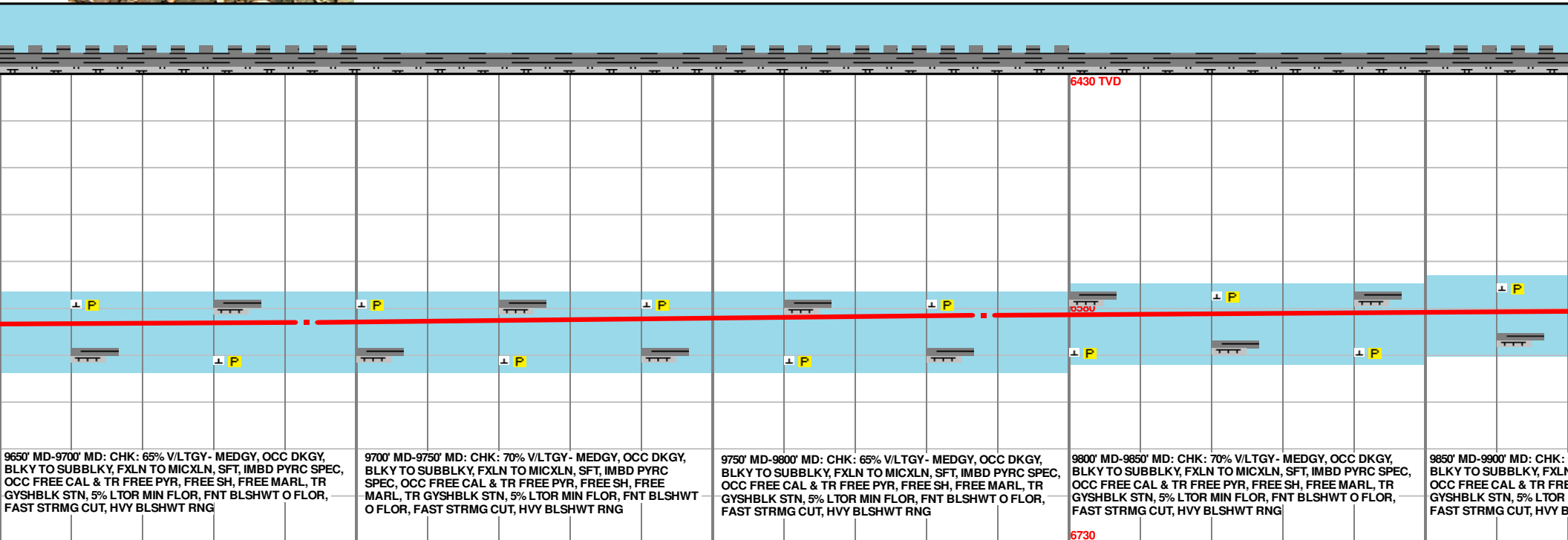
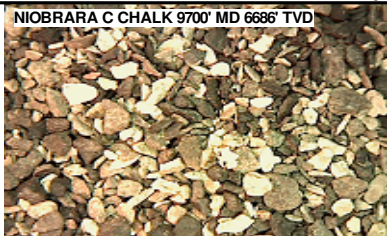
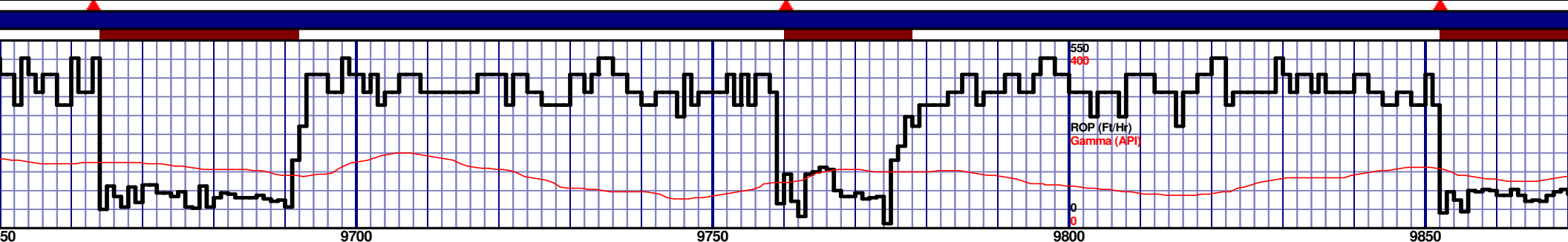
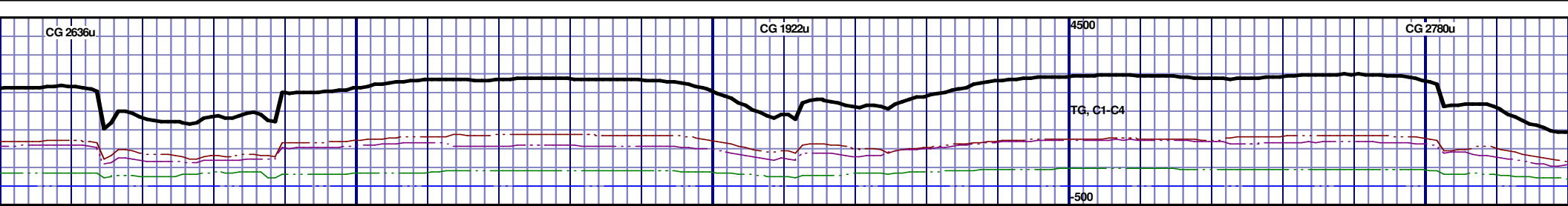
9350' MD-9400' MD: CHK: 65% V/LTGY - MEDGY, OCC DKG, BLKY TO SUBBLKY, FXLN TO MICXLN, SFT, IMBD PYRC SPEC, OCC FREE CAL & TR FREE PYR, FREE SH, TR GYSHBLK STN, 5% LTOR MIN FLOR, FNT BLSHWT O FLOR, FAST STRMG CUT, HVY BLSHWT RNG

9400' MD-9450' MD: CHK: 65% V/LTGY - MEDGY, OCC DKG, BLKY TO SUBBLKY, FXLN TO MICXLN, SFT, IMBD PYRC SPEC, OCC FREE CAL & TR FREE PYR, FREE SH, TR GYSHBLK STN, 5% LTOR MIN FLOR, FNT BLSHWT O FLOR, FAST STRMG CUT, HVY BLSHWT RNG



MD 9503 TVD 6591.24
INC 89.85 AZ 86.26
VS 3297.14

MD 9598 TVD 6591.62
INC 89.69 AZ 85.66
VS 3390.45



9650' MD-9700' MD: CHK: 65% V/LTGY - MEDGY, OCC DKG, BLKY TO SUBBLKY, FXLN TO MICXLN, SFT, IMBD PYRC SPEC, OCC FREE CAL & TR FREE PYR, FREE SH, FREE MARL, TR GYSHBLK STN, 5% LTOR MIN FLOR, FNT BLSHWT O FLOR, FAST STRMG CUT, HVY BLSHWT RNG

9700' MD-9750' MD: CHK: 70% V/LTGY - MEDGY, OCC DKG, BLKY TO SUBBLKY, FXLN TO MICXLN, SFT, IMBD PYRC SPEC, OCC FREE CAL & TR FREE PYR, FREE SH, FREE MARL, TR GYSHBLK STN, 5% LTOR MIN FLOR, FNT BLSHWT O FLOR, FAST STRMG CUT, HVY BLSHWT RNG

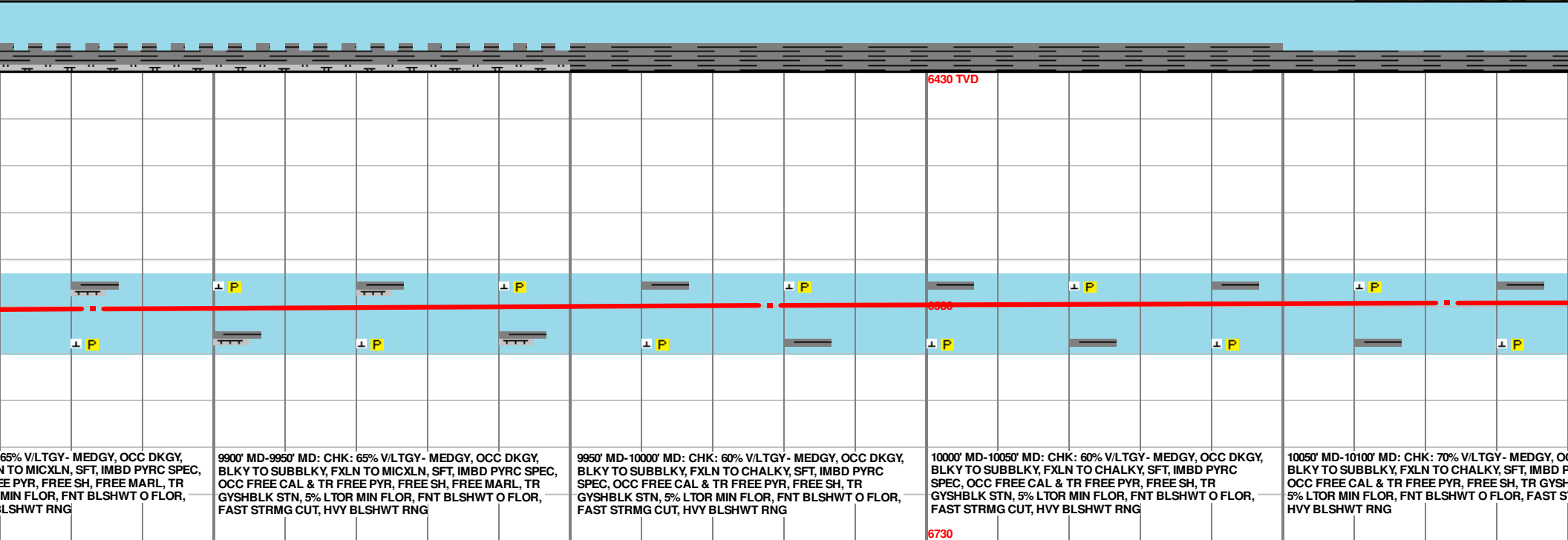
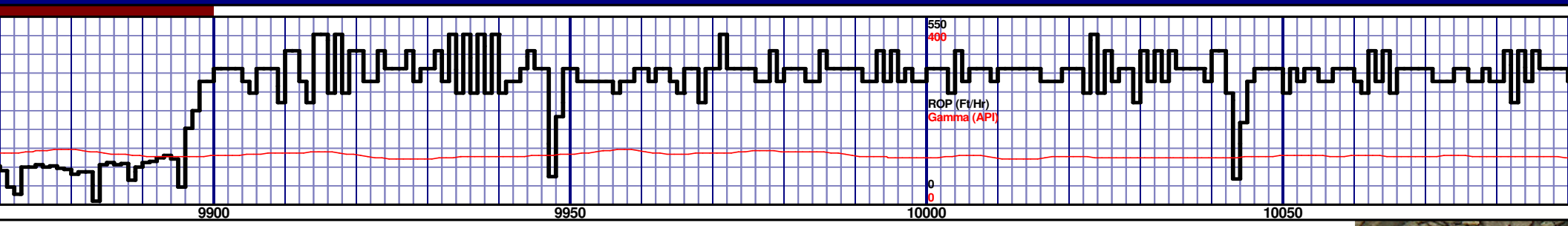
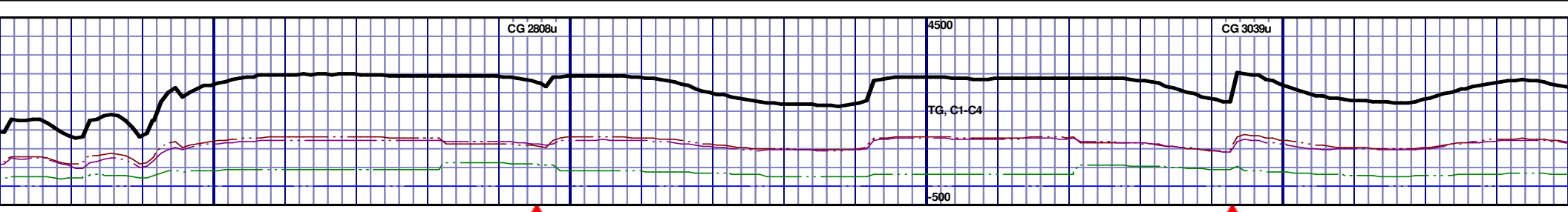
9750' MD-9800' MD: CHK: 65% V/LTGY - MEDGY, OCC DKG, BLKY TO SUBBLKY, FXLN TO MICXLN, SFT, IMBD PYRC SPEC, OCC FREE CAL & TR FREE PYR, FREE SH, FREE MARL, TR GYSHBLK STN, 5% LTOR MIN FLOR, FNT BLSHWT O FLOR, FAST STRMG CUT, HVY BLSHWT RNG

9800' MD-9850' MD: CHK: 70% V/LTGY - MEDGY, OCC DKG, BLKY TO SUBBLKY, FXLN TO MICXLN, SFT, IMBD PYRC SPEC, OCC FREE CAL & TR FREE PYR, FREE SH, FREE MARL, TR GYSHBLK STN, 5% LTOR MIN FLOR, FNT BLSHWT O FLOR, FAST STRMG CUT, HVY BLSHWT RNG

9850' MD-9900' MD: CHK: BLKY TO SUBBLKY, FXLN TO MICXLN, SFT, IMBD PYRC SPEC, OCC FREE CAL & TR FREE PYR, FREE SH, FREE MARL, TR GYSHBLK STN, 5% LTOR MIN FLOR, FNT BLSHWT O FLOR, FAST STRMG CUT, HVY BLSHWT RNG

MD 9693 TVD 6589.06
INC 93.4 AZ 84.73
VS 3483.48

MD 9788 TVD 6584.43
INC 92.19 AZ 84.54
VS 3576.24



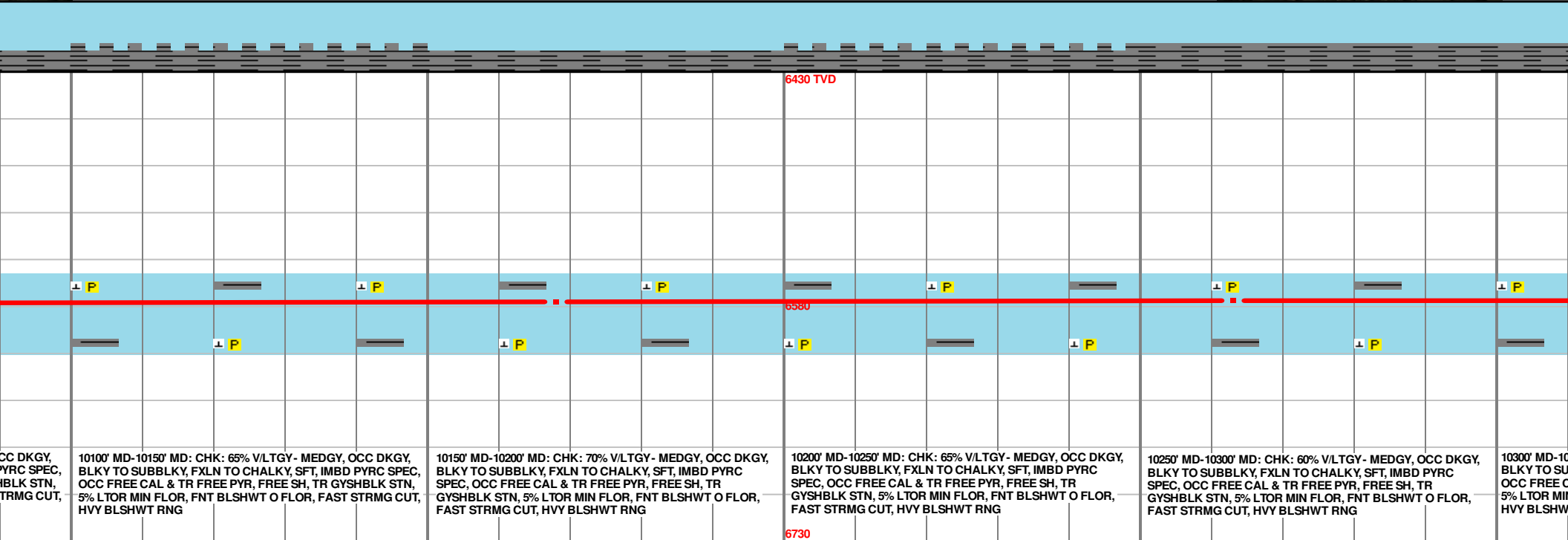
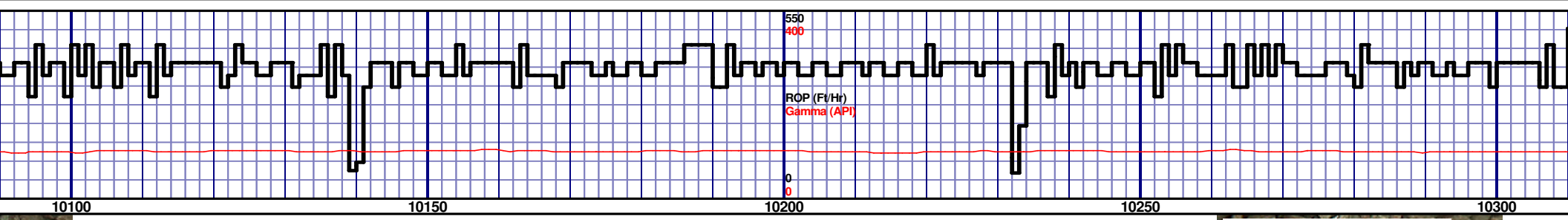
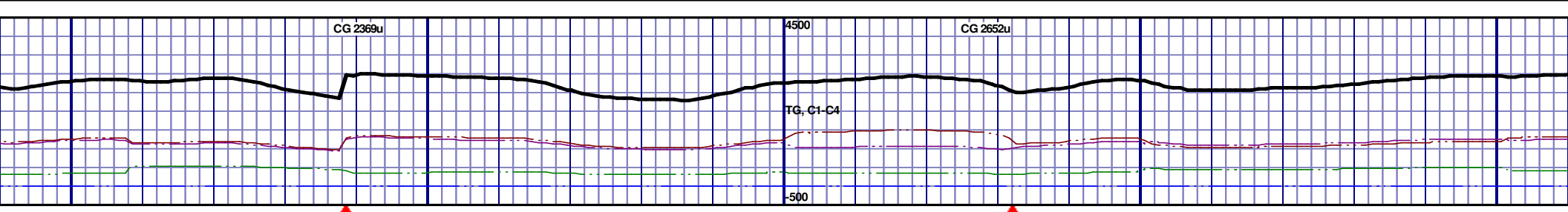
65% V/LTGY - MEDGY, OCC DKG, N TO MICXLN, SFT, IMBD PYRC SPEC, EE PYR, FREE SH, FREE MARL, TR MIN FLOR, FNT BLSHWT O FLOR, BLSHWT RNG

9900' MD-9950' MD: CHK: 65% V/LTGY - MEDGY, OCC DKG, BLKY TO SUBBLKY, FXLN TO MICXLN, SFT, IMBD PYRC SPEC, OCC FREE CAL & TR FREE PYR, FREE SH, FREE MARL, TR GYSHBLK STN, 5% LTOR MIN FLOR, FNT BLSHWT O FLOR, FAST STRMG CUT, HVY BLSHWT RNG

9950' MD-10000' MD: CHK: 60% V/LTGY - MEDGY, OCC DKG, BLKY TO SUBBLKY, FXLN TO CHALKY, SFT, IMBD PYRC SPEC, OCC FREE CAL & TR FREE PYR, FREE SH, TR GYSHBLK STN, 5% LTOR MIN FLOR, FNT BLSHWT O FLOR, FAST STRMG CUT, HVY BLSHWT RNG

10000' MD-10050' MD: CHK: 60% V/LTGY - MEDGY, OCC DKG, BLKY TO SUBBLKY, FXLN TO CHALKY, SFT, IMBD PYRC SPEC, OCC FREE CAL & TR FREE PYR, FREE SH, TR GYSHBLK STN, 5% LTOR MIN FLOR, FNT BLSHWT O FLOR, FAST STRMG CUT, HVY BLSHWT RNG

10050' MD-10100' MD: CHK: 70% V/LTGY - MEDGY, OCC DKG, BLKY TO SUBBLKY, FXLN TO CHALKY, SFT, IMBD PYRC SPEC, OCC FREE CAL & TR FREE PYR, FREE SH, TR GYSHBLK STN, 5% LTOR MIN FLOR, FNT BLSHWT O FLOR, FAST STRMG CUT, HVY BLSHWT RNG



CC DKG, PYRC SPEC, IMBLK STN, TRMG CUT, 5% LTOR MIN FLOR, FNT BLSHWT O FLOR, FAST STRMG CUT, HVY BLSHWT RNG

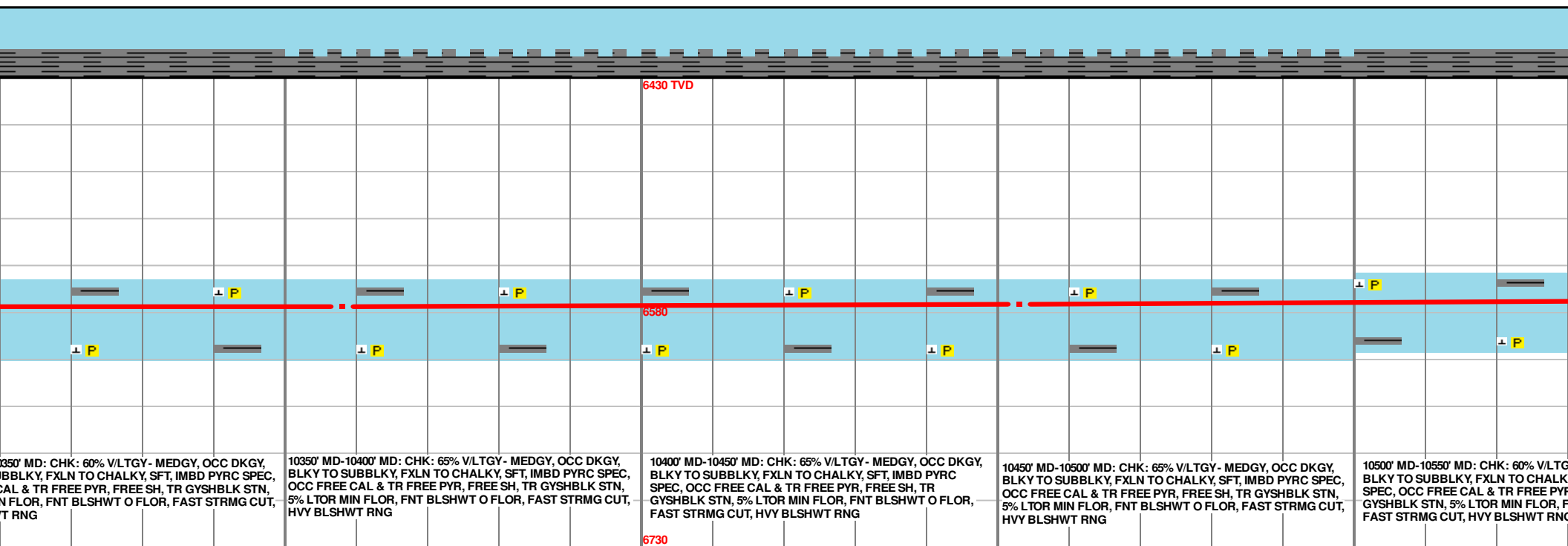
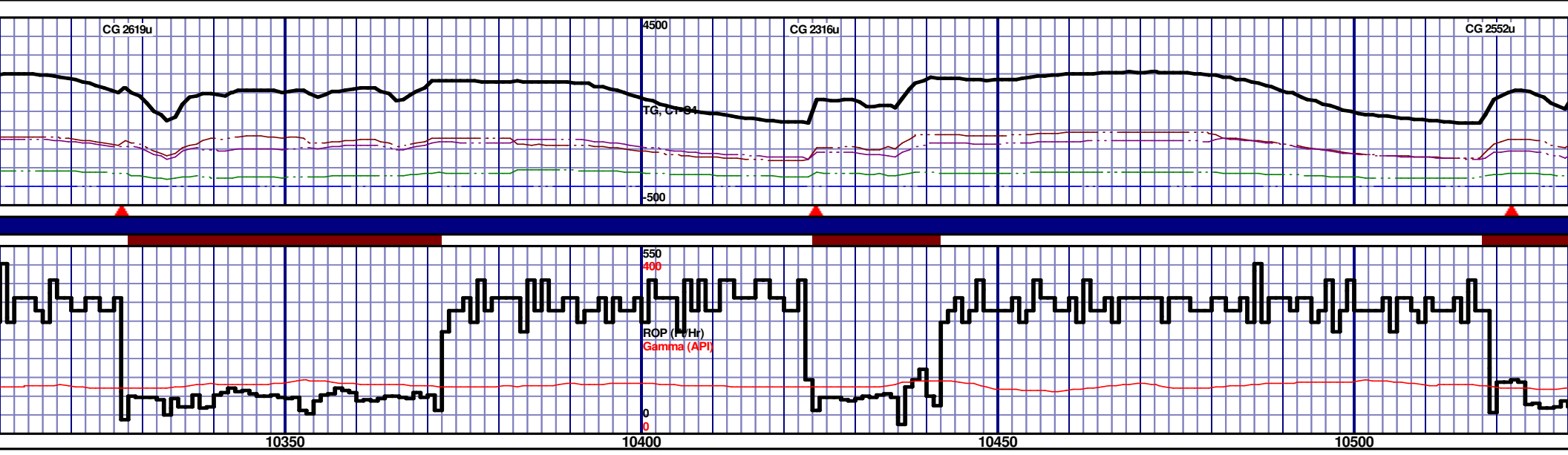
10100' MD-10150' MD: CHK: 65% V/LTGY - MEDGY, OCC DKG, BLKY TO SUBBLKY, FXLN TO CHALKY, SFT, IMBD PYRC SPEC, OCC FREE CAL & TR FREE PYR, FREE SH, TR GYSHBLK STN, 5% LTOR MIN FLOR, FNT BLSHWT O FLOR, FAST STRMG CUT, HVY BLSHWT RNG

10150' MD-10200' MD: CHK: 70% V/LTGY - MEDGY, OCC DKG, BLKY TO SUBBLKY, FXLN TO CHALKY, SFT, IMBD PYRC SPEC, OCC FREE CAL & TR FREE PYR, FREE SH, TR GYSHBLK STN, 5% LTOR MIN FLOR, FNT BLSHWT O FLOR, FAST STRMG CUT, HVY BLSHWT RNG

10200' MD-10250' MD: CHK: 65% V/LTGY - MEDGY, OCC DKG, BLKY TO SUBBLKY, FXLN TO CHALKY, SFT, IMBD PYRC SPEC, OCC FREE CAL & TR FREE PYR, FREE SH, TR GYSHBLK STN, 5% LTOR MIN FLOR, FNT BLSHWT O FLOR, FAST STRMG CUT, HVY BLSHWT RNG

10250' MD-10300' MD: CHK: 60% V/LTGY - MEDGY, OCC DKG, BLKY TO SUBBLKY, FXLN TO CHALKY, SFT, IMBD PYRC SPEC, OCC FREE CAL & TR FREE PYR, FREE SH, TR GYSHBLK STN, 5% LTOR MIN FLOR, FNT BLSHWT O FLOR, FAST STRMG CUT, HVY BLSHWT RNG

10300' MD-10350' MD: CHK: 60% V/LTGY - MEDGY, OCC DKG, BLKY TO SUBBLKY, FXLN TO CHALKY, SFT, IMBD PYRC SPEC, OCC FREE CAL & TR FREE PYR, FREE SH, TR GYSHBLK STN, 5% LTOR MIN FLOR, FNT BLSHWT O FLOR, FAST STRMG CUT, HVY BLSHWT RNG



10350' MD: CHK: 60% V/LTGY - MEDGY, OCC DKG, BLKY TO SUBBLKY, FXLN TO CHALKY, SFT, IMBD PYRC SPEC, OCC FREE CAL & TR FREE PYR, FREE SH, TR GYSHBLK STN, 5% LTOR MIN FLOR, FNT BLSHWT O FLOR, FAST STRMG CUT, HVY BLSHWT RNG

10400' MD-10450' MD: CHK: 65% V/LTGY - MEDGY, OCC DKG, BLKY TO SUBBLKY, FXLN TO CHALKY, SFT, IMBD PYRC SPEC, OCC FREE CAL & TR FREE PYR, FREE SH, TR GYSHBLK STN, 5% LTOR MIN FLOR, FNT BLSHWT O FLOR, FAST STRMG CUT, HVY BLSHWT RNG

10450' MD-10500' MD: CHK: 65% V/LTGY - MEDGY, OCC DKG, BLKY TO SUBBLKY, FXLN TO CHALKY, SFT, IMBD PYRC SPEC, OCC FREE CAL & TR FREE PYR, FREE SH, TR GYSHBLK STN, 5% LTOR MIN FLOR, FNT BLSHWT O FLOR, FAST STRMG CUT, HVY BLSHWT RNG

10500' MD-10550' MD: CHK: 60% V/LTGY - MEDGY, OCC DKG, BLKY TO SUBBLKY, FXLN TO CHALKY, SFT, IMBD PYRC SPEC, OCC FREE CAL & TR FREE PYR, FREE SH, TR GYSHBLK STN, 5% LTOR MIN FLOR, FNT BLSHWT O FLOR, FAST STRMG CUT, HVY BLSHWT RNG

MD 10358 TVD 6576.11
INC 90 AZ 87.27
VS 4137.59

MD 10453 TVD 6574.55
INC 91.88 AZ 91.91
VS 4231.81

