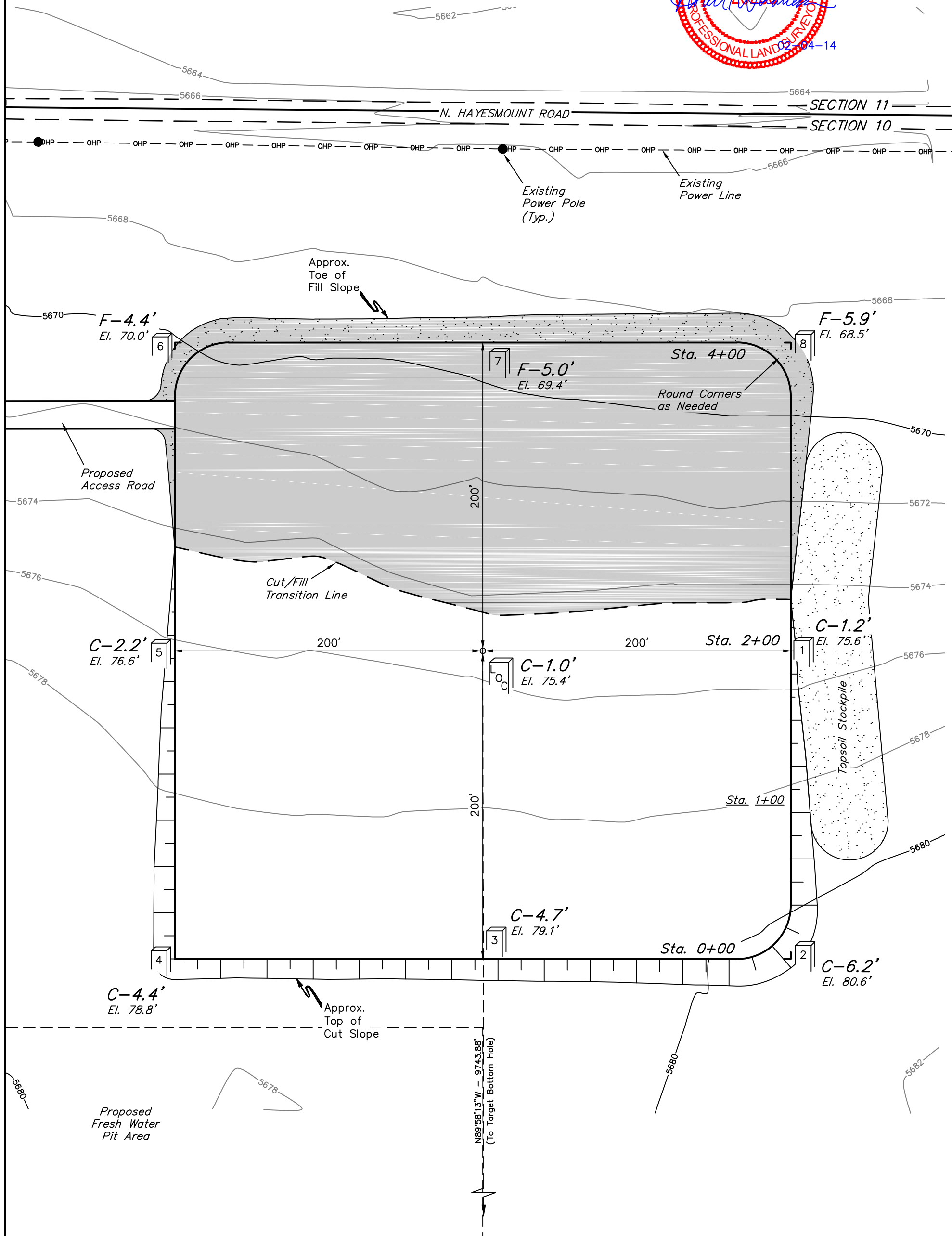


ConocoPhillips Company
CONSTRUCTION LAYOUT FOR
SKY RANCH #4-65 9-10 1H
SECTION 10, T4S, R65W, 6th P.M.
660' FNL 350' FEL

FIGURE #1

SCALE: 1" = 60'
DATE: 12-06-13
DRAWN BY: J.W.
REVISED: 02-04-14



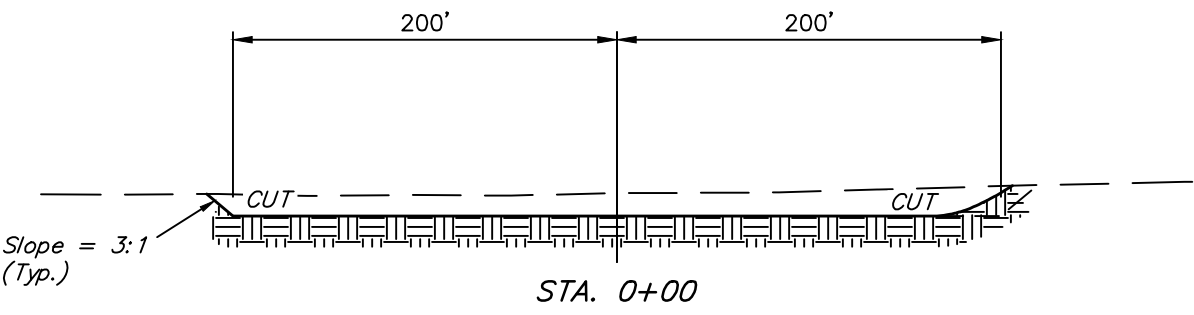
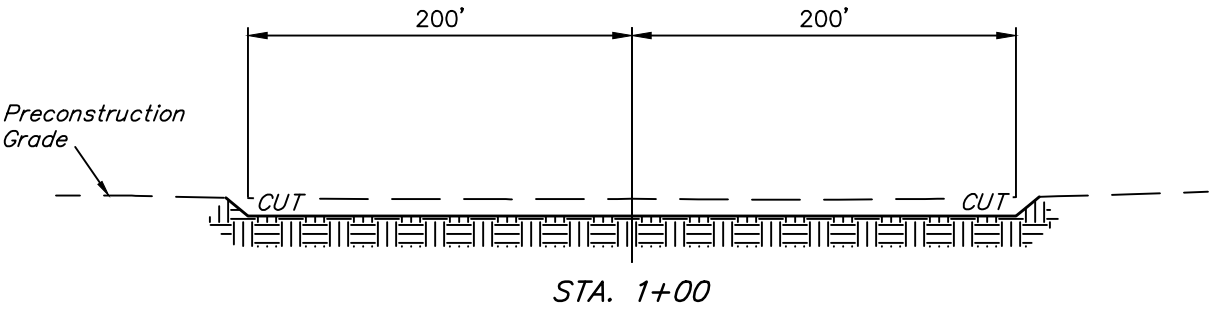
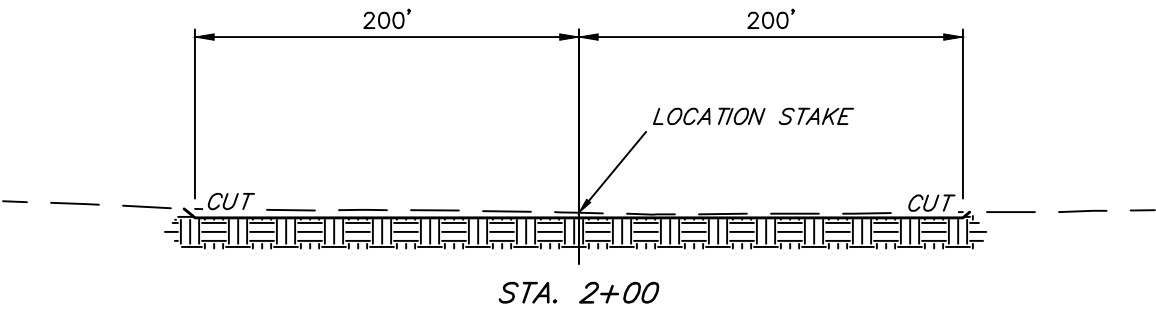
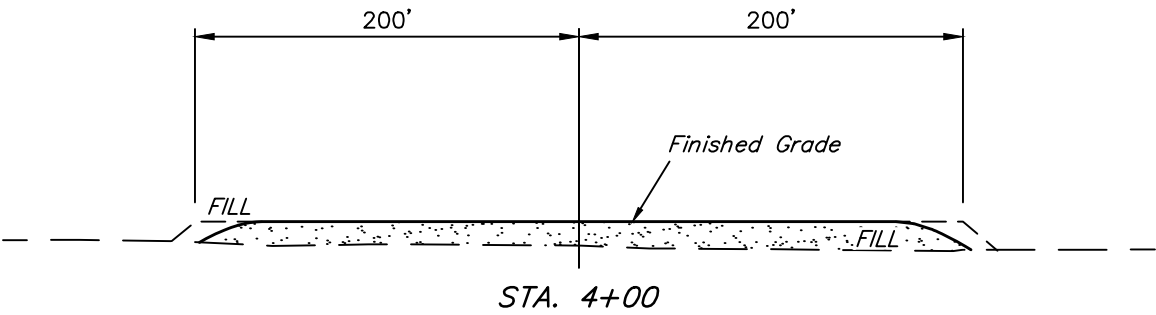
Elev. Ungraded Ground At Loc. Stake = 5675.4'
FINISHED GRADE ELEV. AT LOC. STAKE = 5674.4'

UINTAH ENGINEERING & LAND SURVEYING
85 So. 200 East * Vernal, Utah 84078 * (435) 789-1017

1" = 40'
X-Section
Scale
1" = 100'
DATE: 12-06-13
DRAWN BY: J.W.
REVISED: 02-04-14

ConocoPhillips Company
CONSTRUCTION LAYOUT CROSS SECTIONS FOR
SKY RANCH #4-65 9-10 1H
SECTION 10, T4S, R65W, 6th P.M.
660' FNL 350' FEL

FIGURE #2



NOTE:
Topsoil should not be
Stripped Below Finished
Grade on Substructure Area.

* NOTE:
FILL QUANTITY INCLUDES
10% FOR COMPACTION

APPROXIMATE YARDAGES

(6") Topsoil Stripping = 3,320 Cu. Yds.
Remaining Location = 9,310 Cu. Yds.
TOTAL CUT = 12,630 CU. YDS.
FILL = 9,310 CU. YDS.

EXCESS MATERIAL = 3,320 Cu. Yds.
Topsoil = 3,320 Cu. Yds.
EXCESS UNBALANCE = 0 Cu. Yds.
(After Interim Rehabilitation)

APPROXIMATE ACREAGE

WELL SITE DISTURBANCE = ± 4.426 ACRES
ACCESS ROAD DISTURBANCE = ± 0.592 ACRES
TOTAL = ± 5.018 ACRES

UINTAH ENGINEERING & LAND SURVEYING
85 So. 200 East * Vernal, Utah 84078 * (435) 789-1017