

WELL LOCATION PLAT  
T4S, R65W, 6th P.M.

ConocoPhillips Company

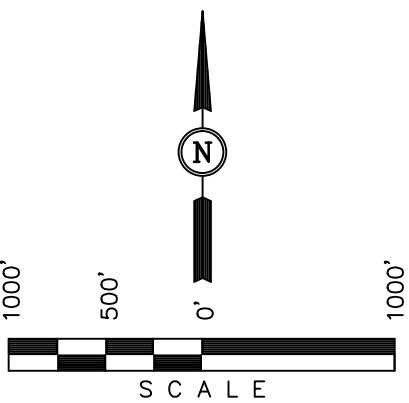
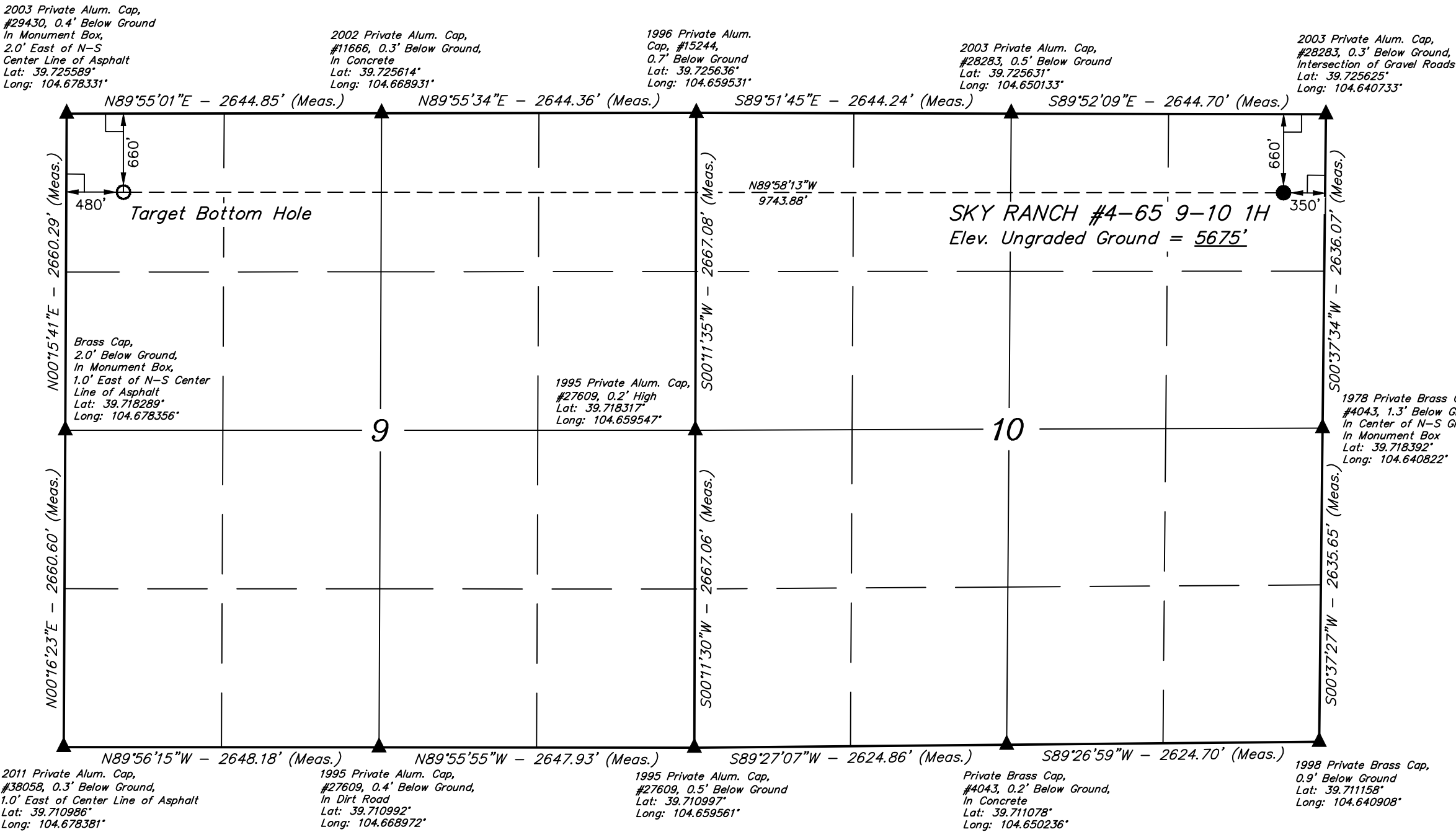
Well location, SKY RANCH #4-65 9-10 1H, located as shown in the NE 1/4 NE 1/4 of Section 10, T4S, R65W, 6th P.M., Arapahoe County, Colorado.

BASIS OF ELEVATION

BENCHMARK 374 LOCATED ON THE SECTION LINE BETWEEN SECTIONS 12 & 13, T5S, R64W, 6th. P.M., TAKEN FROM 1988 PUBLISHED DATUM BY THE UNITED STATES DEPARTMENT OF THE INTERIOR, GEOLOGICAL SURVEY AS BEING 6054.61 FEET.

BASIS OF BEARINGS

BASIS OF BEARINGS IS A G.P.S. OBSERVATION.



CERTIFICATE

THIS IS TO CERTIFY THAT THE ABOVE PLAT WAS PREPARED FROM FIELD NOTES OF ACTUAL SURVEYS MADE BY ME OR UNDER MY SUPERVISION AND THAT THE SAME ARE TRUE AND CORRECT TO THE BEST OF MY KNOWLEDGE AND BELIEF.

COLORED REGISTERED LAND SURVEYOR

28285

02-04-14

STATE OF COLORADO

- LEGEND:
- └─┘ = 90° SYMBOL
  - = PROPOSED WELL HEAD.
  - ▲ = SECTION CORNERS LOCATED.

PDOP = 1.3

NAD 83 (TARGET BOTTOM HOLE)	NAD 83 (SURFACE LOCATION)
LATITUDE = 39°43'25.61" (39.723781)	LATITUDE = 39°43'25.73" (39.723814)
LONGITUDE = 104°40'35.87" (104.676631)	LONGITUDE = 104°38'31.20" (104.642000)
NAD 27 (TARGET BOTTOM HOLE)	NAD 27 (SURFACE LOCATION)
LATITUDE = 39°43'25.66" (39.723794)	LATITUDE = 39°43'25.78" (39.723828)
LONGITUDE = 104°40'33.98" (104.676106)	LONGITUDE = 104°38'29.32" (104.641478)

UINTAH ENGINEERING & LAND SURVEYING		
85 SOUTH 200 EAST - VERNAL, UTAH 84078		
(435) 789-1017		
SCALE 1" = 1000'	DATE SURVEYED: 08-15-13	DATE DRAWN: 08-19-13
PARTY ZANE BULLARD A.G. J.S.	REFERENCES G.L.O. PLAT	
WEATHER HOT	FILE ConocoPhillips Company	

SECTION BREAKDOWN  
T4S, R65W, 6th P.M.

ConocoPhillips Company

Well location, SKY RANCH #4-65 9-10 1H, located as shown in the NE 1/4 NE 1/4 of Section 10, T4S, R65W, 6th P.M., Arapahoe County, Colorado.

BASIS OF ELEVATION

BENCHMARK 374 LOCATED ON THE SECTION LINE BETWEEN SECTIONS 12 & 13, T5S, R64W, 6th. P.M., TAKEN FROM 1988 PUBLISHED DATUM BY THE UNITED STATES DEPARTMENT OF THE INTERIOR, GEOLOGICAL SURVEY AS BEING 6054.61 FEET.

BASIS OF BEARINGS

BASIS OF BEARINGS IS A G.P.S. OBSERVATION.

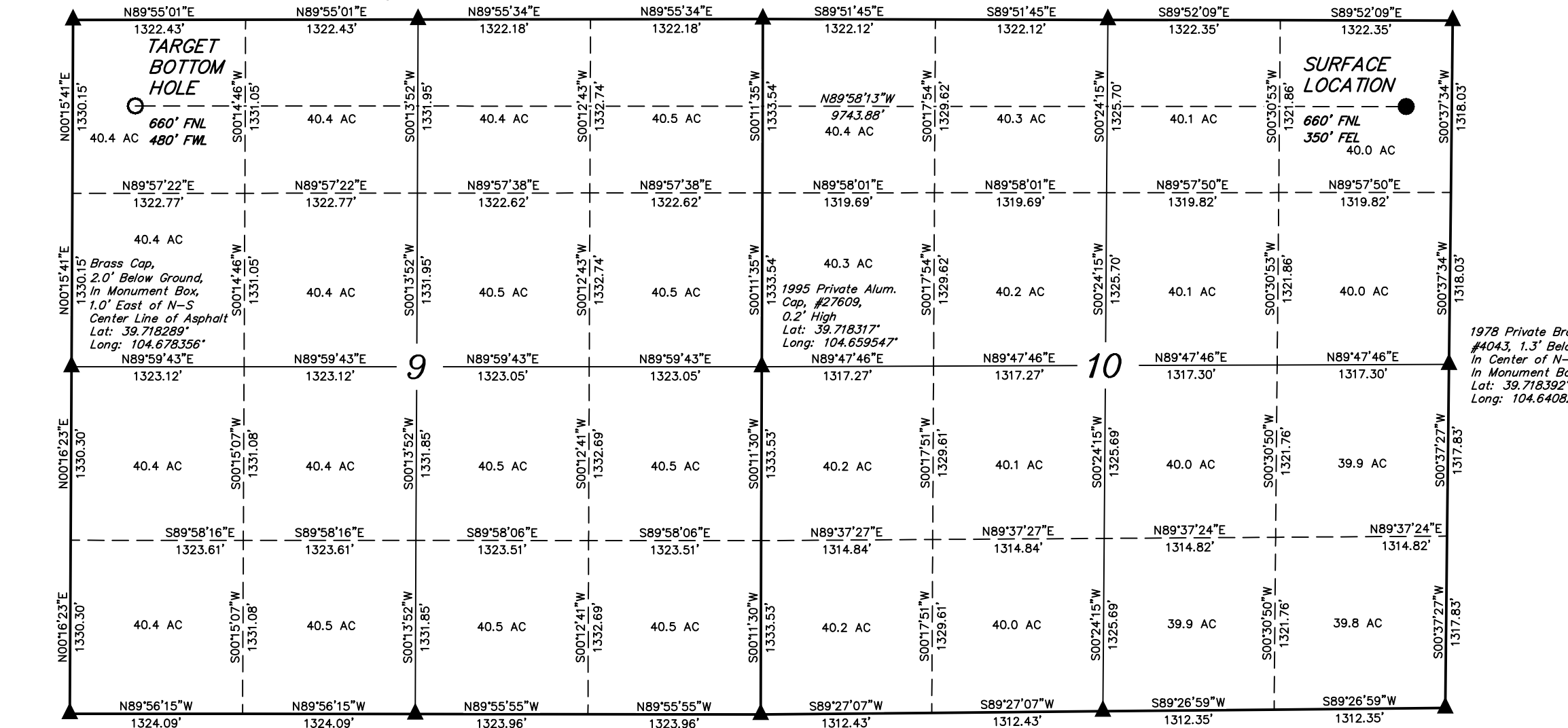
2003 Private Alum. Cap,  
#29430, 0.4' Below Ground  
In Monument Box,  
2.0' East of N-S  
Center Line of Asphalt  
Lat: 39.725589°  
Long: 104.678331°

2002 Private Alum. Cap,  
#11666, 0.3' Below Ground,  
In Concrete  
Lat: 39.725614°  
Long: 104.668931°

1996 Private Alum.  
Cap, #15244,  
0.7' Below Ground  
Lat: 39.725631°  
Long: 104.659531°

2003 Private Alum. Cap,  
#28283, 0.5' Below Ground  
Lat: 39.725631°  
Long: 104.650133°

2003 Private Alum. Cap,  
#28283, 0.3' Below Ground,  
Intersection of Gravel Roads  
Lat: 39.725625°  
Long: 104.640733°



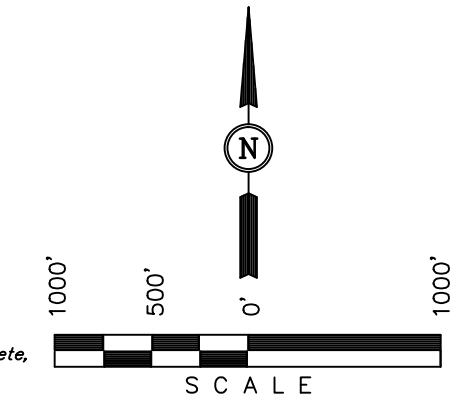
2011 Private Alum. Cap,  
#38058, 0.3' Below Ground,  
1.0' East of Center Line of Asphalt  
Lat: 39.710986°  
Long: 104.678381°

1995 Private Alum. Cap,  
#27609, 0.4' Below Ground,  
In Dirt Road  
Lat: 39.710992°  
Long: 104.668972°

1995 Private Alum. Cap,  
#27609, 0.5' Below Ground  
Lat: 39.710997°  
Long: 104.659561°

Private Brass Cap,  
#4043, 0.2' Below Ground,  
In Concrete  
Lat: 39.711078°  
Long: 104.650236°

1998 Private Brass Cap,  
0.9' Below Ground  
Lat: 39.711158°  
Long: 104.640908°



CERTIFICATE  
THIS IS TO CERTIFY THAT THE ABOVE PLAT WAS PREPARED FROM FIELD NOTES OF ACTUAL SURVEYS MADE BY ME OR UNDER MY SUPERVISION AND THAT THE SAME ARE TRUE AND CORRECT TO THE BEST OF MY KNOWLEDGE AND BELIEF.  
JUL 28 2014  
REGISTERED LAND SURVEYOR  
REGISTRATION NO. 28285  
STATE OF COLORADO  
JUL 28 2014

- LEGEND:
- └─┘ = 90° SYMBOL
  - = PROPOSED WELL HEAD.
  - ▲ = SECTION CORNERS LOCATED.

NAD 83 (TARGET BOTTOM HOLE)	NAD 83 (SURFACE LOCATION)
LATITUDE = 39°43'25.61" (39.723781)	LATITUDE = 39°43'25.73" (39.723814)
LONGITUDE = 104°40'35.87" (104.676631)	LONGITUDE = 104°38'31.20" (104.642000)
NAD 27 (TARGET BOTTOM HOLE)	NAD 27 (SURFACE LOCATION)
LATITUDE = 39°43'25.66" (39.723794)	LATITUDE = 39°43'25.78" (39.723828)
LONGITUDE = 104°40'33.98" (104.676106)	LONGITUDE = 104°38'29.32" (104.641478)

REV: 02-04-14 J.W. REV: 12-06-13 J.W.		
UINTAH ENGINEERING & LAND SURVEYING 85 SOUTH 200 EAST - VERNAL, UTAH 84078 (435) 789-1017		
SCALE 1" = 1000'	DATE SURVEYED: 08-15-13	DATE DRAWN: 08-19-13
PARTY ZANE BULLARD A.G. J.S.	REFERENCES G.L.O. PLAT	
WEATHER HOT	FILE ConocoPhillips Company	