



7136 South Yale Avenue, Suite 414
Tulsa, Oklahoma 74136-6378

phone 918.925.9739

fax 866.534.4559

WWW.HZMUD.COM/25

Customer Information

Operator: Noble Energy Inc
1625 Broadway
Suite 2200
Denver, Colorado 80202

Geologist: Holly Duncan
Noble Energy Inc.

Mud Logging Details

Logger: Tom Denney &
Jeremy Needham
Log Interval: 6550' MD to 10834' MD
Start Date: October 6, 2013
Release Date: October 10, 2013

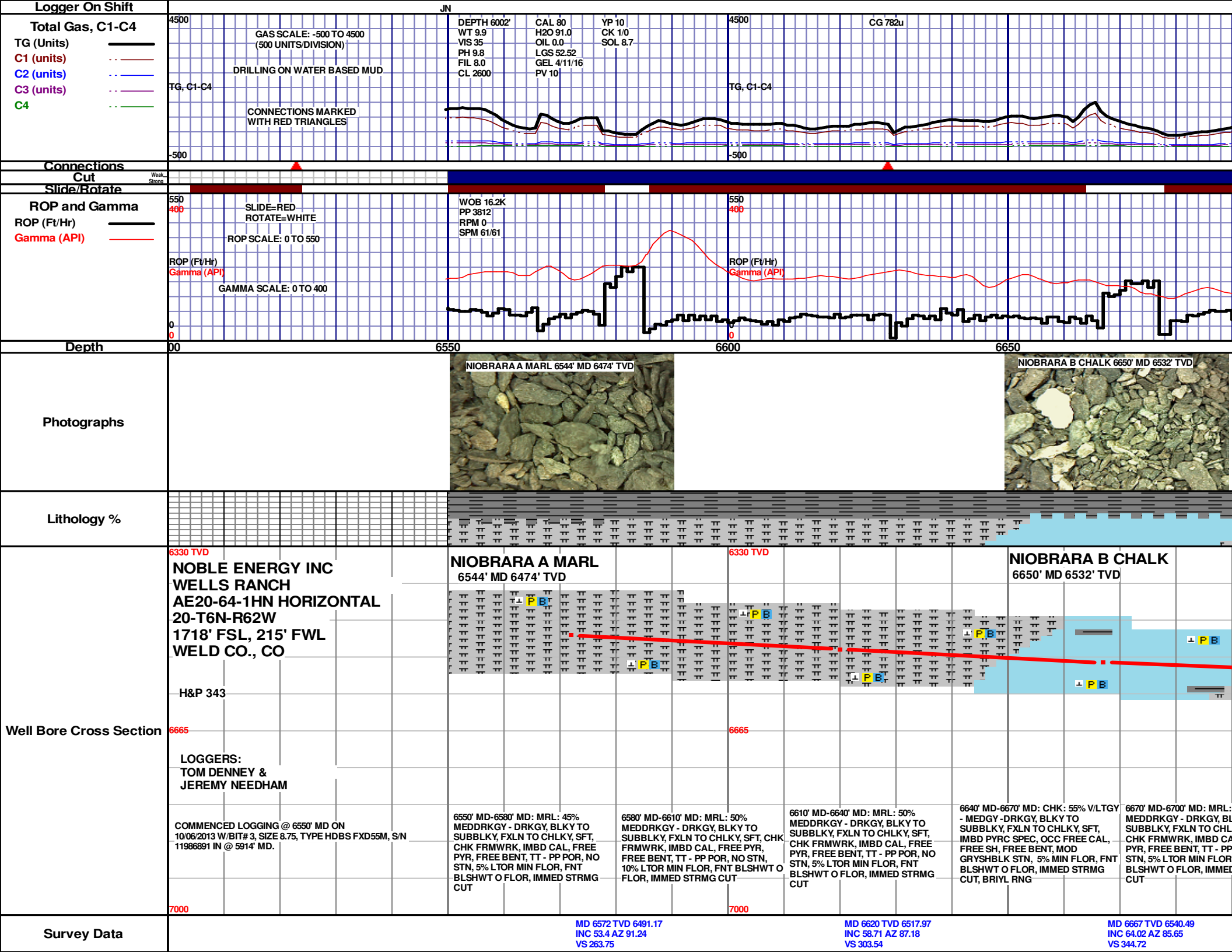
Well Information

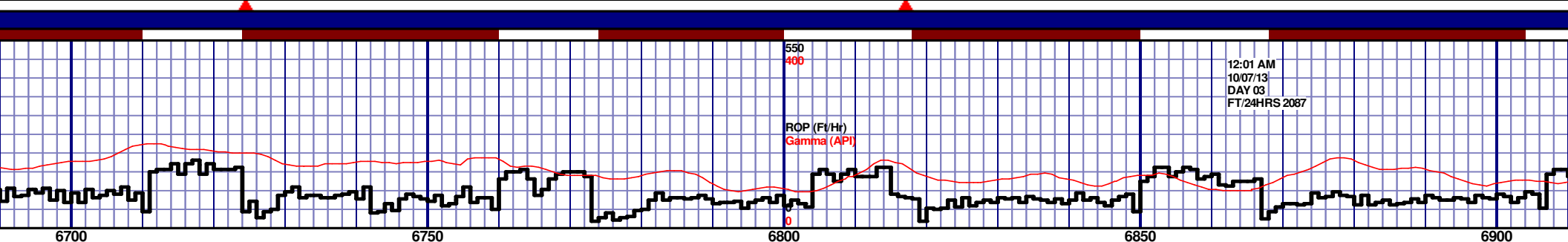
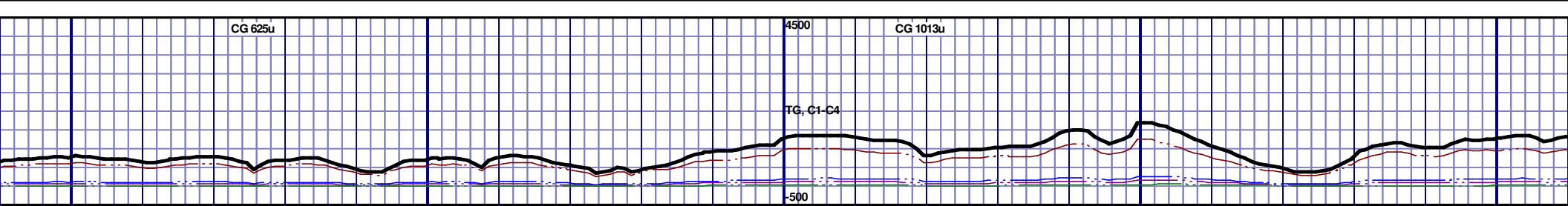
Well Name: Wells Ranch AE20-64-1HN
Horizontal

Location: 20-T6N-R62W
1718' FSL, 215' FWL

County: Weld
State: Colorado

Drilling Rig: H&P 343
Total Depth: 10834' MD
TD Date: October 10, 2013
Formation: Niobrara C Chalk
KB Elevation: 4809'
GR Elevation: 4785'
API Number: 05-123-37213-0000

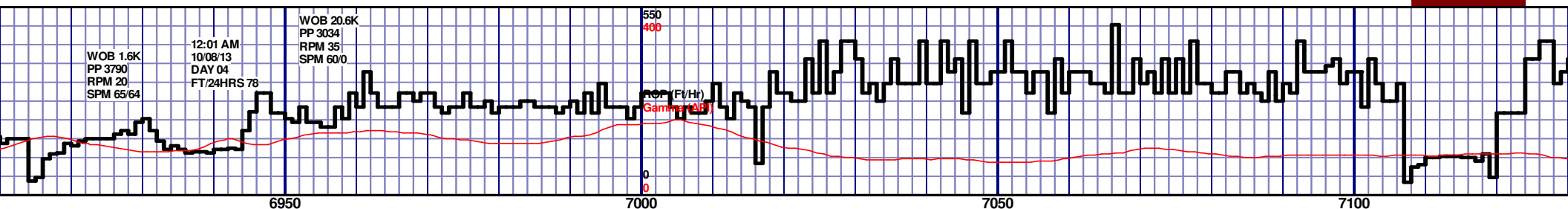
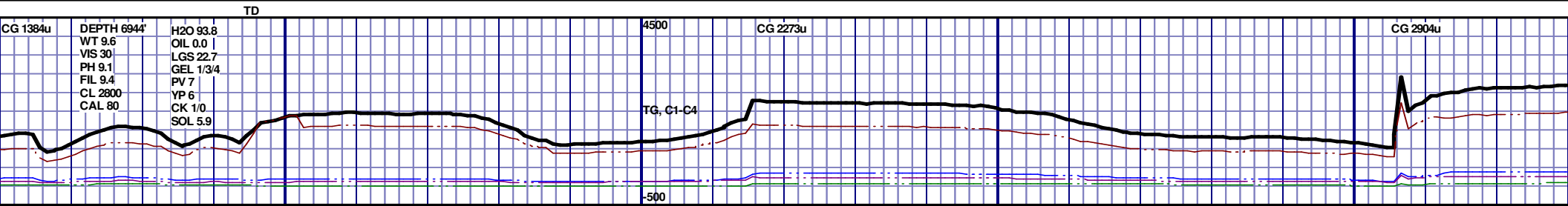




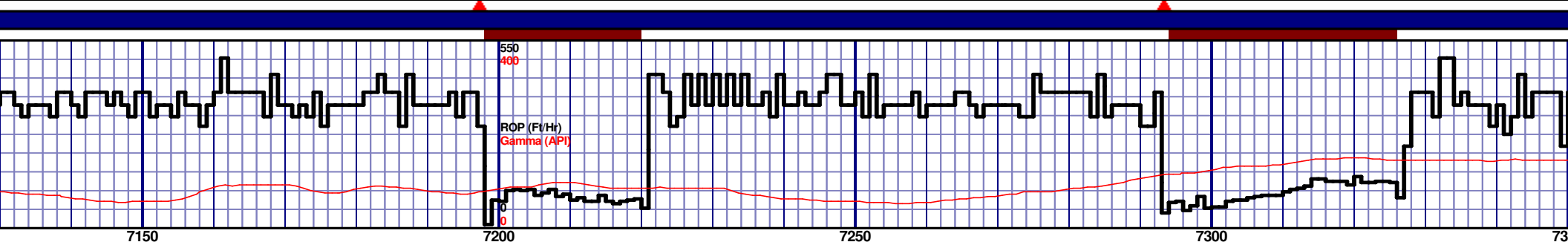
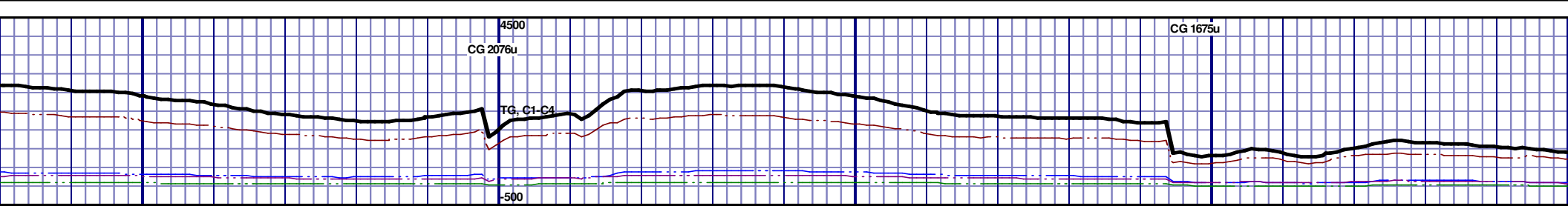
12:01 AM
10/07/13
DAY 03
FT/24HRS 2087



NIOBRARA B MARL 6693' MD 6551' TVD				NIOBRARA C CHALK 6769' MD 6578' TVD				6330 TVD																							
50% LY TO KY, SFT, AL, FREE POR, NO FNT O STRMG				6700' MD-6730' MD: MRL: 45% MEDDRKGY - DRKGY, BLKY TO SUBBLKY, FXLN TO CHLKY, SFT, CHK FRMWRK, IMBD CAL, FREE PYR, FREE BENT, TT - PP POR, NO STN, 5% L TOR MIN FLOR, FNT BLSHWT O FLOR, IMMED STRMG CUT				6700' MD-6730' MD: MRL: 50% MEDDRKGY - DRKGY, BLKY TO SUBBLKY, FXLN TO CHLKY, SFT, CHK FRMWRK, IMBD CAL, FREE PYR, FREE BENT, TT - PP POR, NO STN, 5% L TOR MIN FLOR, FNT BLSHWT O FLOR, IMMED STRMG CUT				6760' MD-6790' MD: CHK: 60% V/LTGY - MEDGY - DRKGY, BLKY TO SUBBLKY, FXLN TO CHLKY, SFT, IMBD PYRC SPEC, OCC FREE CAL, FREE SH, MOD GRYSHBLK STN, NO MIN FLOR, FNT BLSHWT O FLOR, IMMED STRMG CUT, BRIYL RNG				6790' MD-6820' MD: CHK: 65% V/LTGY - MEDGY - DRKGY, BLKY TO SUBBLKY, FXLN TO CHLKY, SFT, IMBD PYRC SPEC, OCC FREE CAL, FREE SH, MOD GRYSHBLK STN, 5% MIN FLOR, FNT BLSHWT O FLOR, IMMED STRMG CUT, BRIYL RNG				6820' MD-6850' MD: CHK: 65% V/LTGY - MEDGY - DRKGY, BLKY TO SUBBLKY, FXLN TO CHLKY, SFT, IMBD PYRC SPEC, OCC FREE CAL, FREE SH, MOD GRYSHBLK STN, 5% MIN FLOR, FNT BLSHWT O FLOR, IMMED STRMG CUT, BRIYL RNG				6850' MD-6880' MD: CHK: 65% V/LTGY - MEDGY - DRKGY, BLKY TO SUBBLKY, FXLN TO CHLKY, SFT, IMBD PYRC SPEC, OCC FREE CAL, FREE SH, MOD GRYSHBLK STN, NO MIN FLOR, FNT BLSHWT O FLOR, IMMED STRMG CUT, BRIYL RNG				6880' MD-6910' MD: CHK: 65% V/LTGY - MEDGY - DRKGY, BLKY TO SUBBLKY, FXLN TO CHLKY, SFT, IMBD PYRC SPEC, OCC FREE CAL, FREE SH, FREE MARL, MOD GRYSHBLK STN, NO MIN FLOR, FNT BLSHWT O FLOR, IMMED STRMG CUT, BRIYL RNG			
												6665																			
																7000															



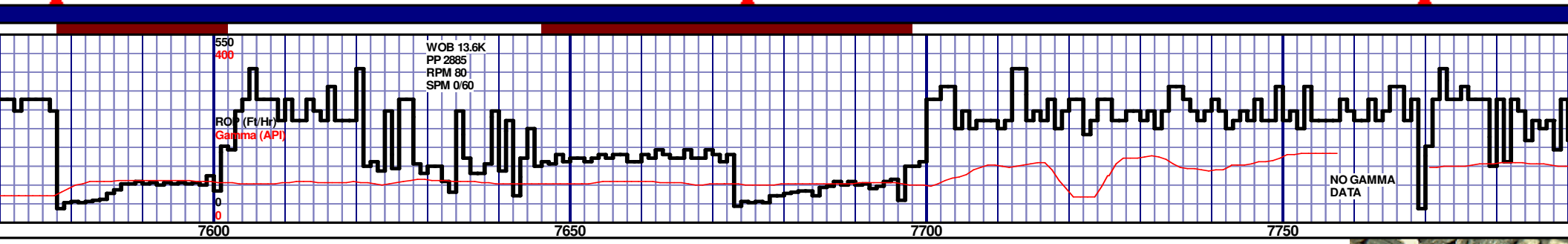
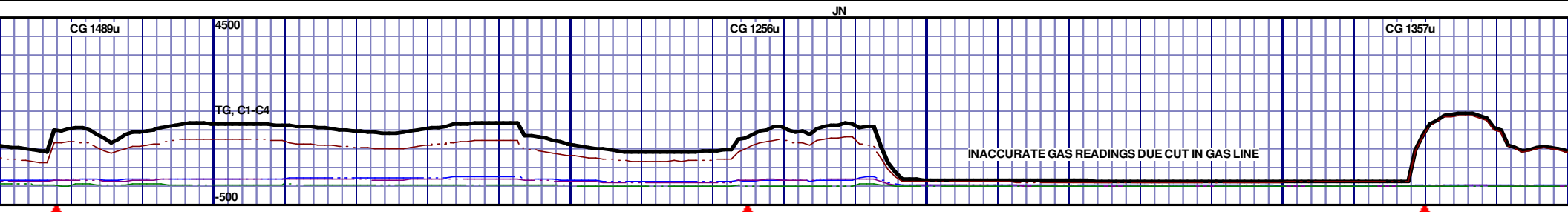
TOOH @ 2:15 AM ON 10/07/2013 @ 6944' MD FOR INTERMEDIATE CASING OPERATIONS. TIH @ 5:10 AM ON 10/08/2013. RESUMED DRILLING @ 9:37 AM ON 10/08/2013 W/ BIT #4, 6.125", HDBS, MMD54, S/N 12259731 IN @ 6944' MD.				6330 TVD															



										6330 TVD																				7310' MD 6625' TVD																													



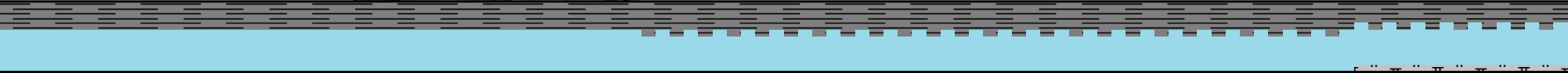
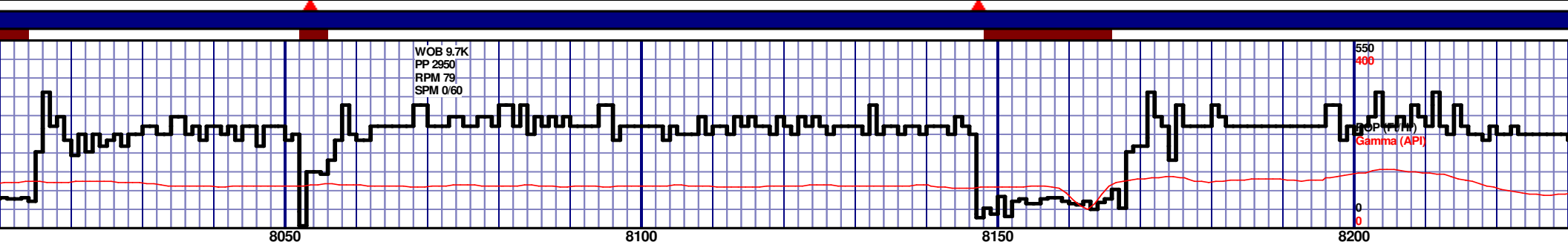
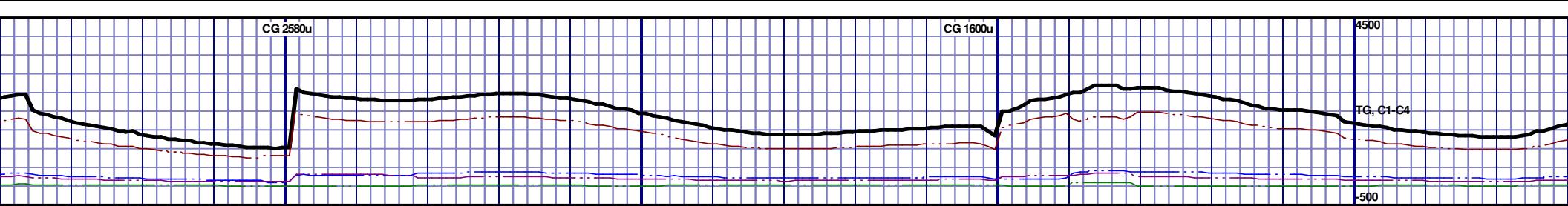
<p>7350' MD-7400' MD: MRL: 50% MEDDRKGY - DRKGY, BLKY TO SUBBLKY, FXLN TO CHLKY, SFT, CHK FRMWRK, IMBD CAL, FREE PYR, NO STN, NO MIN FLOR, FNT BLSHWT O FLOR, IMMED STRMG CUT</p>	<p>7400' MD-7450' MD: MRL: 50% MEDDRKGY - DRKGY, BLKY TO SUBBLKY, FXLN TO CHLKY, SFT, CHK FRMWRK, IMBD CAL, FREE PYR, NO STN, NO MIN FLOR, FNT BLSHWT O FLOR, IMMED STRMG CUT</p>	<p>7450' MD-7500' MD: CHK: 60% V/LTGY - MEDGY -DRKGY, BLKY TO SUBBLKY, FXLN TO CHLKY, SFT, IMBD PYRC SPEC, OCC FREE CAL, FREE SH, MOD GRYSBLK STN, NO MIN FLOR, FNT BLSHWT O FLOR, IMMED STRMG CUT, BRIYL RNG</p>	<p>7500' MD-7550' MD: CHK: 60% V/LTGY - MEDGY -DRKGY, BLKY TO SUBBLKY, FXLN TO CHLKY, SFT, IMBD PYRC SPEC, OCC FREE CAL, FREE SH, MOD GRYSBLK STN, NO MIN FLOR, FNT BLSHWT O FLOR, IMMED STRMG CUT, BRIYL RNG</p>	<p>7550' MD-7600' MD: CHK: TO SUBBLKY, FXLN TO CHLKY, SFT, IMBD PYRC SPEC, OCC FREE CAL, FREE SH, MOD GRYSBLK STN, NO MIN FLOR, FNT BLSHWT O FLOR, IMMED STRMG CUT, BRIYL RNG</p>



<p>6330 TVD</p> <p>6665</p> <p>7000</p>	<p>7600' MD-7650' MD: CHK: 60% VLTGY- MEDGY-DRKGY, BLKY TO SUBBLKY, FXLN TO CHLKY, SFT, IMBD PYRC SPEC, OCC FREE CAL, FREE SH, MOD GRYSBLK STN, NO MIN FLOR, FNT BLSHWT O FLOR, IMMED STRMG CUT, BRIYL RNG</p>	<p>7650' MD-7700' MD: CHK: 60% VLTGY- MEDGY-DRKGY, BLKY TO SUBBLKY, FXLN TO CHLKY, SFT, IMBD PYRC SPEC, OCC FREE CAL, FREE SH, MOD GRYSBLK STN, NO MIN FLOR, FNT BLSHWT O FLOR, IMMED STRMG CUT, BRIYL RNG</p>	<p>7700' MD-7750' MD: CHK: 50% VLTGY- MEDGY-DRKGY, BLKY TO SUBBLKY, FXLN TO CHLKY, SFT, IMBD PYRC SPEC, OCC FREE CAL, FREE SH, FREE MARL, MOD GRYSBLK STN, NO MIN FLOR, FNT BLSHWT O FLOR, IMMED STRMG CUT, BRIYL RNG</p>	<p>7750' MD-7800' MD: CHK: 60% VLTGY- MEDGY-DRKGY, BLKY TO SUBBLKY, FXLN TO CHLKY, SFT, IMBD PYRC SPEC, OCC FREE CAL, FREE SH, MOD GRYSBLK STN, NO MIN FLOR, FNT BLSHWT O FLOR, IMMED STRMG CUT, BRIYL RNG</p>
---	--	--	---	--

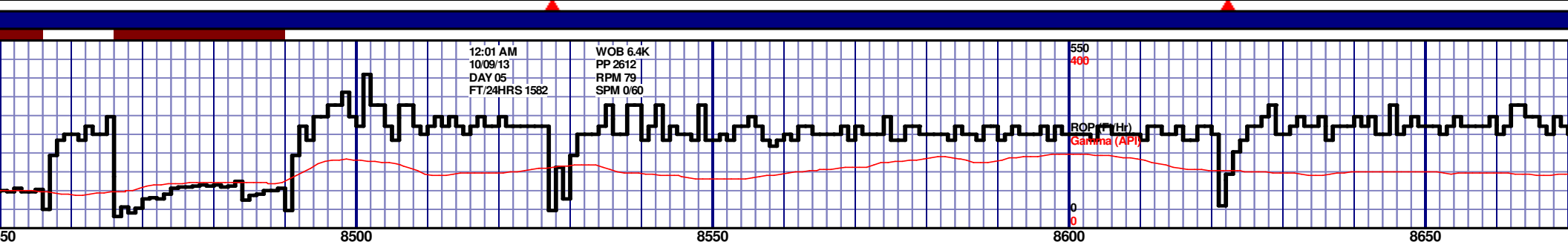
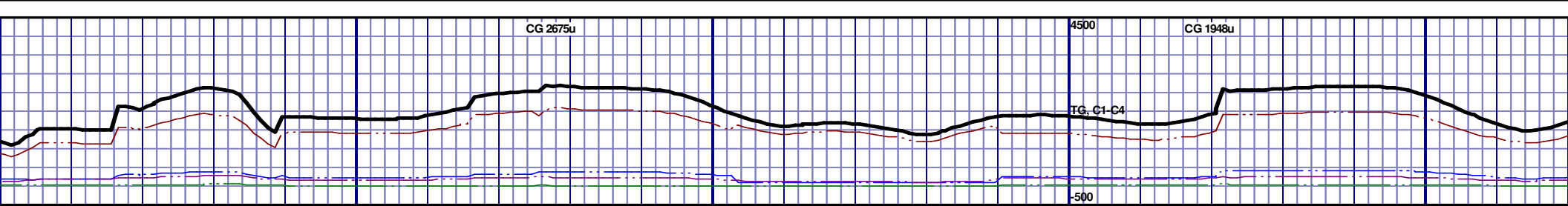
MD 7609 TVD 6617.54
INC 91.29 AZ 94.28
VS 1274.55

MD 7704 TVD 6615.55
INC 91.11 AZ 90.97
VS 1369.35



<p>50' MD: CHK: 60% V/LTGY - MEDGY - DRKGY, BLKY TO SUBBLKY, FXLN TO CHLKY, SFT, OCC FREE CAL, FREE SH, HBLK STN, NO MIN FLOR, FNT BLSHWT O FLOR, IMM CUT, BRIYL RNG</p>	<p>8050' MD-8100' MD: CHK: 60% V/LTGY - MEDGY - DRKGY, BLKY TO SUBBLKY, FXLN TO CHLKY, SFT, OCC FREE CAL, FREE SH, MOD GRYSBLK STN, NO MIN FLOR, FNT BLSHWT O FLOR, IMMED STRMG CUT, BRIYL RNG</p>	<p>8100' MD-8150' MD: CHK: 55% V/LTGY - MEDGY - DRKGY, BLKY TO SUBBLKY, FXLN TO CHLKY, SFT, OCC FREE CAL, IMBD PYRC SPEC, FREE SH, MOD GRYSBLK STN, NO MIN FLOR, FNT BLSHWT O FLOR, IMMED STRMG CUT, BRIYL RNG</p>	<p>8150' MD-8200' MD: CHK: 55% V/LTGY - MEDGY - DRKGY, BLKY TO SUBBLKY, FXLN TO CHLKY, SFT, OCC FREE CAL, IMBD PYRC SPEC, FREE SH, MOD GRYSBLK STN, NO MIN FLOR, FNT BLSHWT O FLOR, IMMED STRMG CUT, BRIYL RNG</p>	<p>8200' MD-8250' MD: CHK: 55% V/LTGY - MEDGY - DRKGY, BLKY TO SUBBLKY, FXLN TO CHLKY, SFT, OCC FREE CAL, IMBD PYRC SPEC, FREE SH, MOD GRYSBLK STN, NO MIN FLOR, FNT BLSHWT O FLOR, IMMED STRMG CUT, BRIYL RNG</p>
--	--	--	--	--

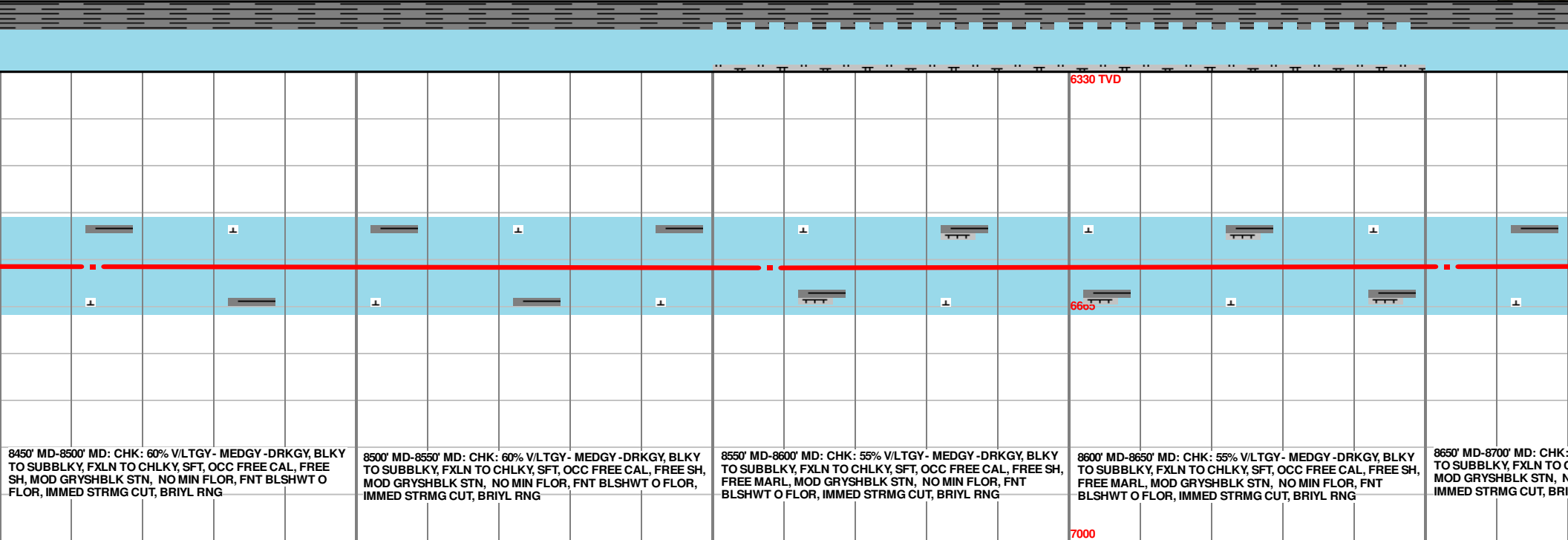




12:01 AM
10/09/13
DAY 05
FT/24HRS 1582

WOB 6.4K
PP 2612
RPM 79
SPM 0/60

ROP (Ft/Hr)
Gamma (API)



8450' MD-8500' MD: CHK: 60% VLTGY- MEDGY-DRKGY, BLKY TO SUBBLKY, FXLN TO CHLKY, SFT, OCC FREE CAL, FREE SH, MOD GRYSBLK STN, NO MIN FLOR, FNT BLSHWT O FLOR, IMMED STRMG CUT, BRIYL RNG

8500' MD-8550' MD: CHK: 60% VLTGY- MEDGY-DRKGY, BLKY TO SUBBLKY, FXLN TO CHLKY, SFT, OCC FREE CAL, FREE SH, MOD GRYSBLK STN, NO MIN FLOR, FNT BLSHWT O FLOR, IMMED STRMG CUT, BRIYL RNG

8550' MD-8600' MD: CHK: 55% VLTGY- MEDGY-DRKGY, BLKY TO SUBBLKY, FXLN TO CHLKY, SFT, OCC FREE CAL, FREE SH, FREE MARL, MOD GRYSBLK STN, NO MIN FLOR, FNT BLSHWT O FLOR, IMMED STRMG CUT, BRIYL RNG

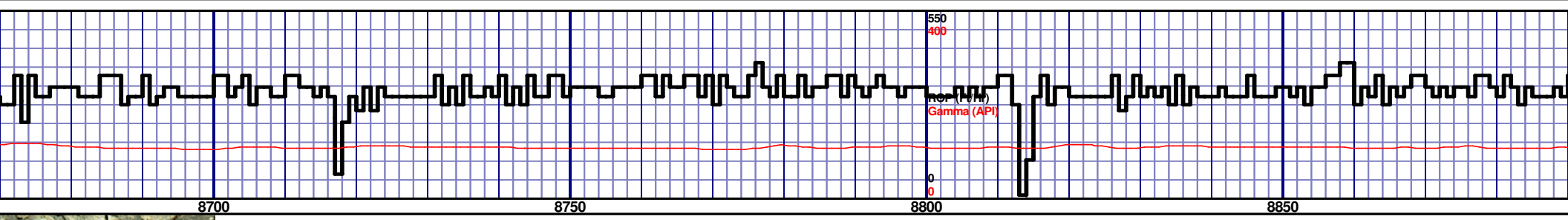
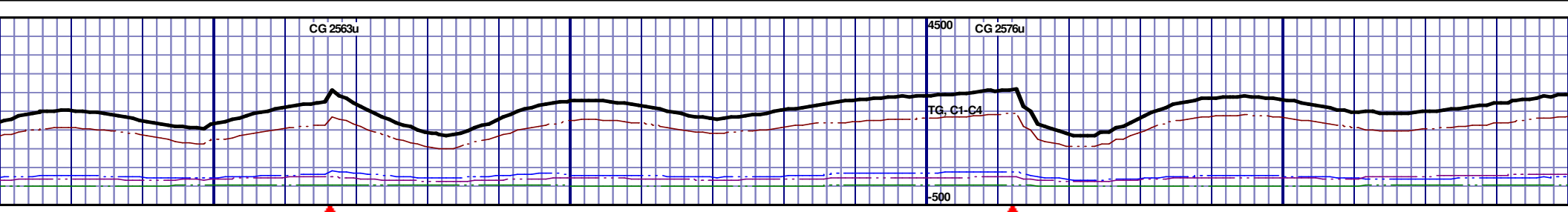
8600' MD-8650' MD: CHK: 55% VLTGY- MEDGY-DRKGY, BLKY TO SUBBLKY, FXLN TO CHLKY, SFT, OCC FREE CAL, FREE SH, FREE MARL, MOD GRYSBLK STN, NO MIN FLOR, FNT BLSHWT O FLOR, IMMED STRMG CUT, BRIYL RNG

8650' MD-8700' MD: CHK: 55% VLTGY- MEDGY-DRKGY, BLKY TO SUBBLKY, FXLN TO CHLKY, SFT, OCC FREE CAL, FREE SH, FREE MARL, MOD GRYSBLK STN, NO MIN FLOR, FNT BLSHWT O FLOR, IMMED STRMG CUT, BRIYL RNG

MD 8463 TVD 6608.83
INC 88.86 AZ 88.19
VS 2127.38

MD 8558 TVD 6609.49
INC 90.34 AZ 87.06
VS 2222.33

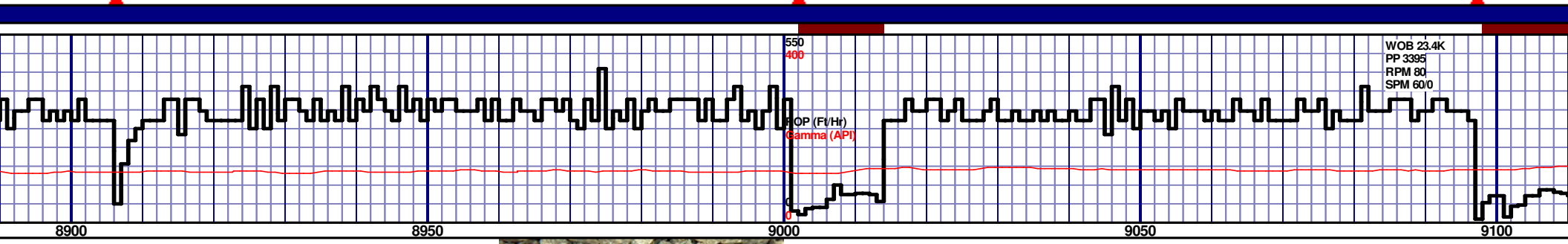
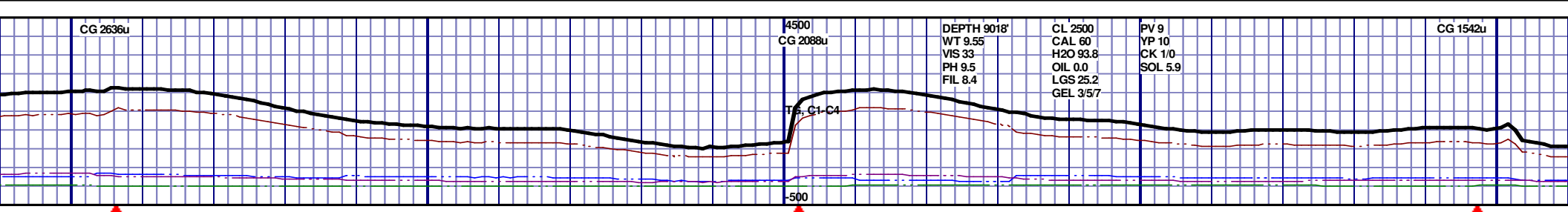
MD 8653 TVD 6607.96
INC 91.51 AZ 87.04
VS 2317.24



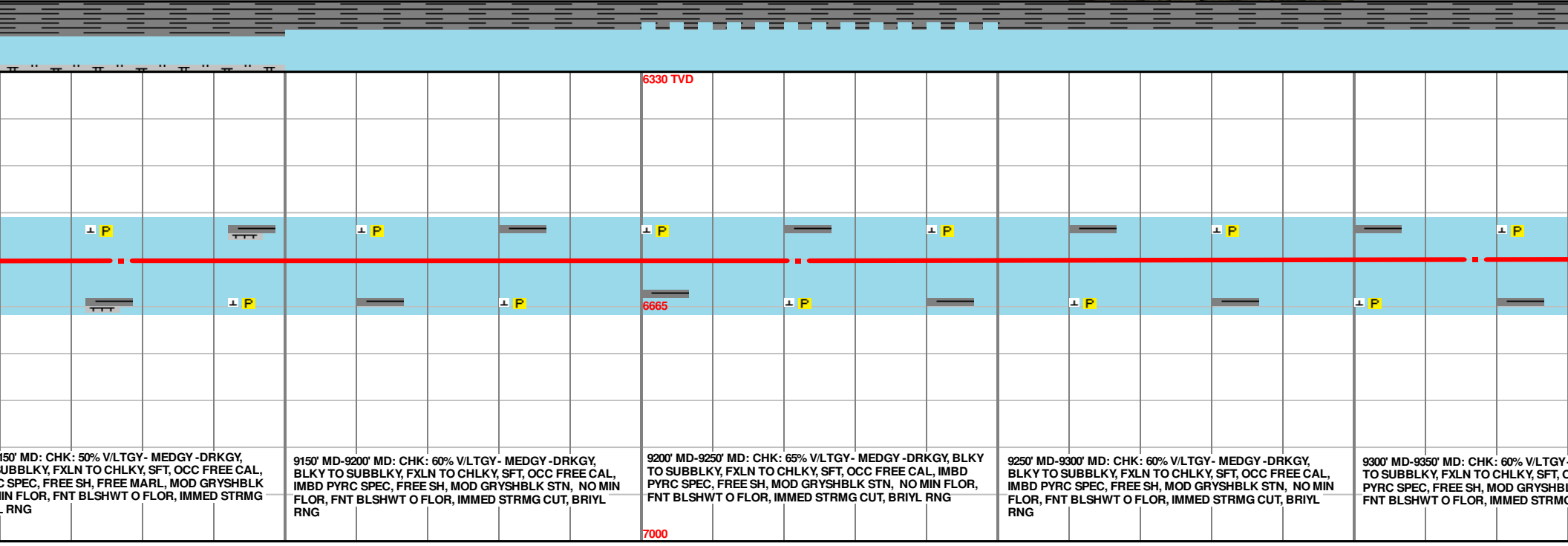
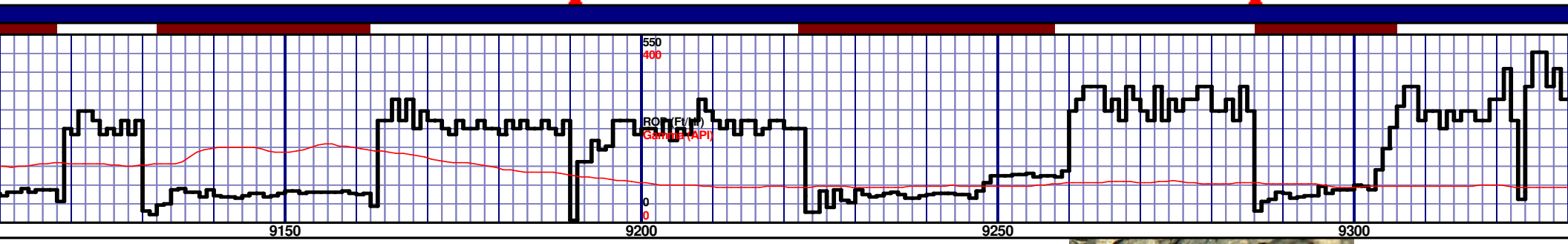
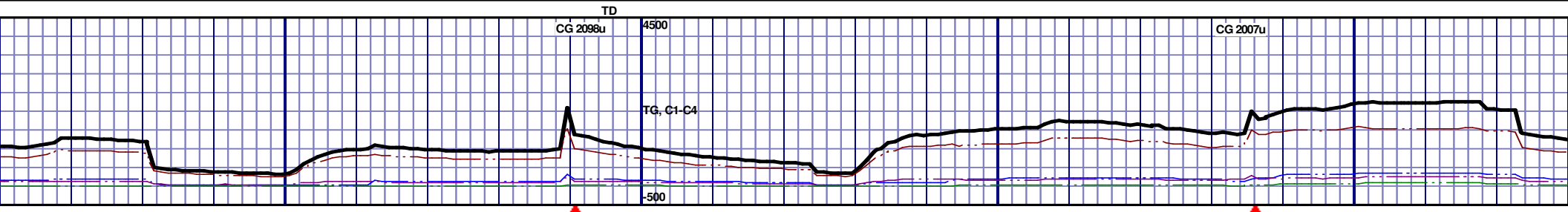
<p>60% V/LTGY - MEDGY - DRKGY, BLKY TO SUBBLKY, FXLN TO CHLKY, SFT, OCC FREE CAL, FREE SH, NO MIN FLOR, FNT BLSHWT O FLOR, YL RNG</p>	<p>8700' MD-8750' MD: CHK: 55% V/LTGY - MEDGY - DRKGY, BLKY TO SUBBLKY, FXLN TO CHLKY, SFT, OCC FREE CAL, IMBD PYRC SPEC, FREE SH, MOD GRYSBLK STN, NO MIN FLOR, FNT BLSHWT O FLOR, IMMED STRMG CUT, BRIYL RNG</p>	<p>8750' MD-8800' MD: CHK: 60% V/LTGY - MEDGY - DRKGY, BLKY TO SUBBLKY, FXLN TO CHLKY, SFT, OCC FREE CAL, IMBD PYRC SPEC, FREE SH, MOD GRYSBLK STN, NO MIN FLOR, FNT BLSHWT O FLOR, IMMED STRMG CUT, BRIYL RNG</p>	<p>8800' MD-8850' MD: CHK: 60% V/LTGY - MEDGY - DRKGY, BLKY TO SUBBLKY, FXLN TO CHLKY, SFT, OCC FREE CAL, IMBD PYRC SPEC, FREE SH, MOD GRYSBLK STN, NO MIN FLOR, FNT BLSHWT O FLOR, IMMED STRMG CUT, BRIYL RNG</p>	<p>8850' MD-8900' MD: CHK: 60% V/LTGY - MEDGY - DRKY TO SUBBLKY, FXLN TO CHLKY, SFT, OCC FREE CAL, IMBD PYRC SPEC, FREE SH, MOD GRYSBLK STN, NO MIN FLOR, FNT BLSHWT O FLOR, IMMED STRMG CUT, BRIYL</p>
---	--	--	--	---

MD 8747 TVD 6605.73
INC 91.2 AZ 88.14
VS 2411.17

MD 8842 TVD 6603.99
INC 90.89 AZ 90.33
VS 2506.15



6330 TVD						6600						7000					
KG, BLKY L, IMBD MIN FLOR, FRNG						KG, BLKY L, IMBD MIN FLOR, FRNG						KG, BLKY L, IMBD MIN FLOR, FRNG					
8900' MD-8950' MD: CHK: 60% V/LTGY - MEDGY - DRKGY, BLKY TO SUBBLKY, FXLN TO CHLKY, SFT, OCC FREE CAL, FREE SH, MOD GRYSBLK STN, NO MIN FLOR, FNT BLSHWT O FLOR, IMMED STRMG CUT, BRIYL RNG						8950' MD-9000' MD: CHK: 55% V/LTGY - MEDGY - DRKGY, BLKY TO SUBBLKY, FXLN TO CHLKY, SFT, OCC FREE CAL, FREE SH, MOD GRYSBLK STN, NO MIN FLOR, FNT BLSHWT O FLOR, IMMED STRMG CUT, BRIYL RNG						9000' MD-9050' MD: CHK: 60% V/LTGY - MEDGY - DRKGY, BLKY TO SUBBLKY, FXLN TO CHLKY, SFT, OCC FREE CAL, IMBD PYRC SPEC, FREE SH, MOD GRYSBLK STN, NO MIN FLOR, FNT BLSHWT O FLOR, IMMED STRMG CUT, BRIYL RNG					
9050' MD-9100' MD: CHK: 55% V/LTGY - MEDGY - DRKGY, BLKY TO SUBBLKY, FXLN TO CHLKY, SFT, OCC FREE CAL, IMBD PYRC SPEC, FREE SH, MOD GRYSBLK STN, NO MIN FLOR, FNT BLSHWT O FLOR, IMMED STRMG CUT, BRIYL RNG						9100' MD-9150' MD: CHK: 55% V/LTGY - MEDGY - DRKGY, BLKY TO SUBBLKY, FXLN TO CHLKY, SFT, OCC FREE CAL, IMBD PYRC SPEC, FREE SH, MOD GRYSBLK STN, NO MIN FLOR, FNT BLSHWT O FLOR, IMMED STRMG CUT, BRIYL RNG						9150' MD-9200' MD: CHK: 55% V/LTGY - MEDGY - DRKGY, BLKY TO SUBBLKY, FXLN TO CHLKY, SFT, OCC FREE CAL, IMBD PYRC SPEC, FREE SH, MOD GRYSBLK STN, NO MIN FLOR, FNT BLSHWT O FLOR, IMMED STRMG CUT, BRIYL RNG					



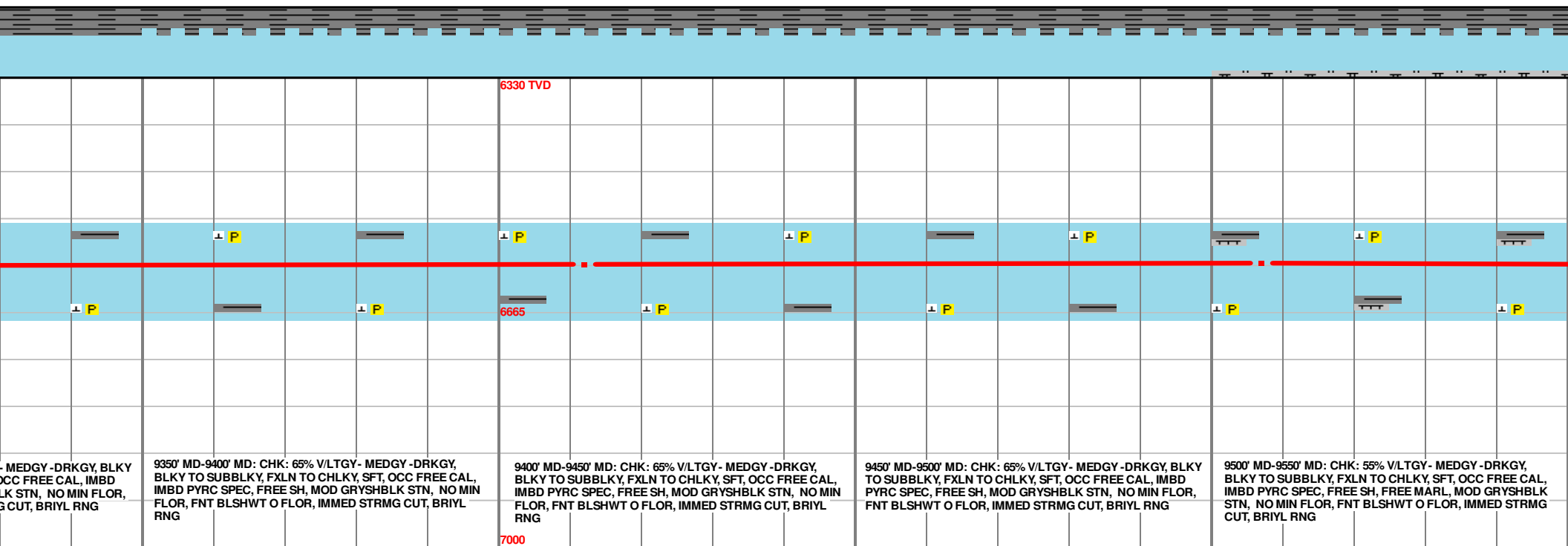
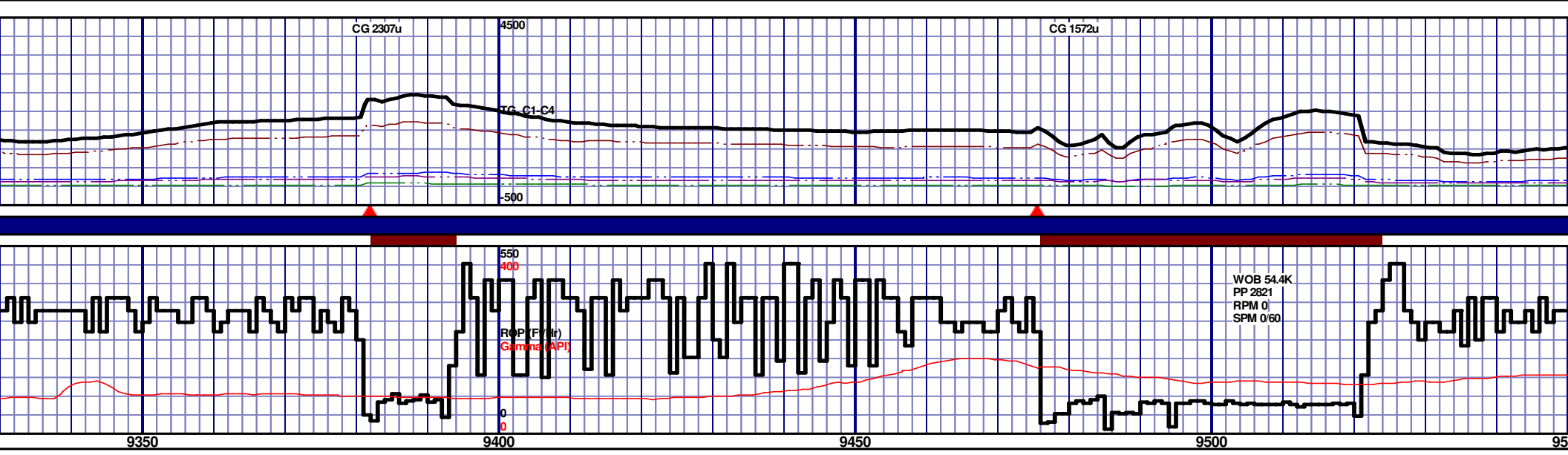
150' MD: CHK: 50% V/LTGY- MEDGY-DRKGY, UBBLY, FXLN TO CHLKY, SFT, OCC FREE CAL, C SPEC, FREE SH, FREE MARL, MOD GRYSBLK IN FLOR, FNT BLSHWT O FLOR, IMMED STRMG .RNG

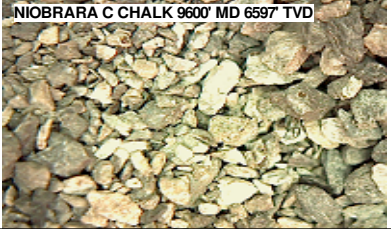
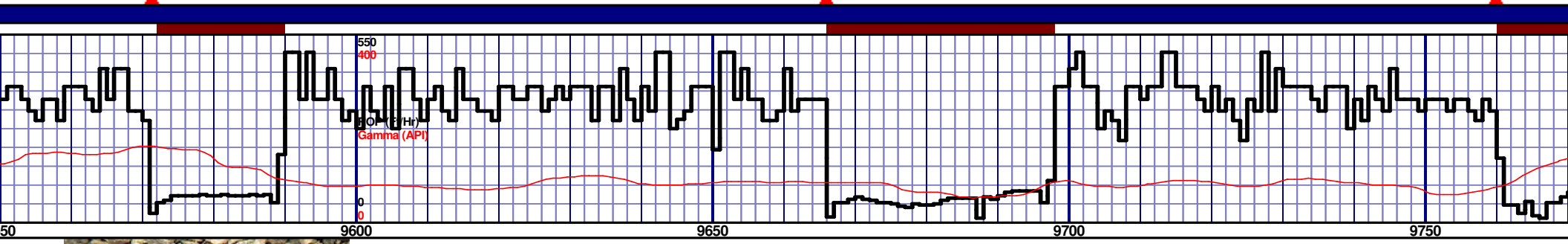
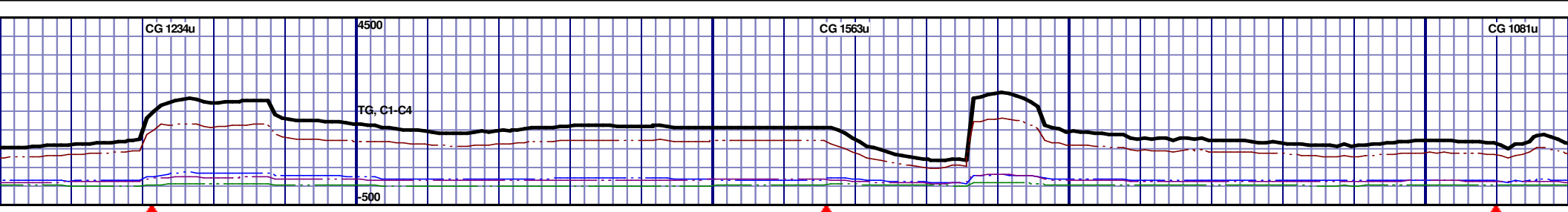
9150' MD-9200' MD: CHK: 60% V/LTGY- MEDGY-DRKGY, BLKY TO SUBBLKY, FXLN TO CHLKY, SFT, OCC FREE CAL, IMBD PYRC SPEC, FREE SH, MOD GRYSBLK STN, NO MIN FLOR, FNT BLSHWT O FLOR, IMMED STRMG CUT, BRIYL RNG

9200' MD-9250' MD: CHK: 65% V/LTGY- MEDGY-DRKGY, BLKY TO SUBBLKY, FXLN TO CHLKY, SFT, OCC FREE CAL, IMBD PYRC SPEC, FREE SH, MOD GRYSBLK STN, NO MIN FLOR, FNT BLSHWT O FLOR, IMMED STRMG CUT, BRIYL RNG

9250' MD-9300' MD: CHK: 60% V/LTGY- MEDGY-DRKGY, BLKY TO SUBBLKY, FXLN TO CHLKY, SFT, OCC FREE CAL, IMBD PYRC SPEC, FREE SH, MOD GRYSBLK STN, NO MIN FLOR, FNT BLSHWT O FLOR, IMMED STRMG CUT, BRIYL RNG

9300' MD-9350' MD: CHK: 60% V/LTGY- TO SUBBLKY, FXLN TO CHLKY, SFT, C PYRC SPEC, FREE SH, MOD GRYSBLK FNT BLSHWT O FLOR, IMMED STRMG

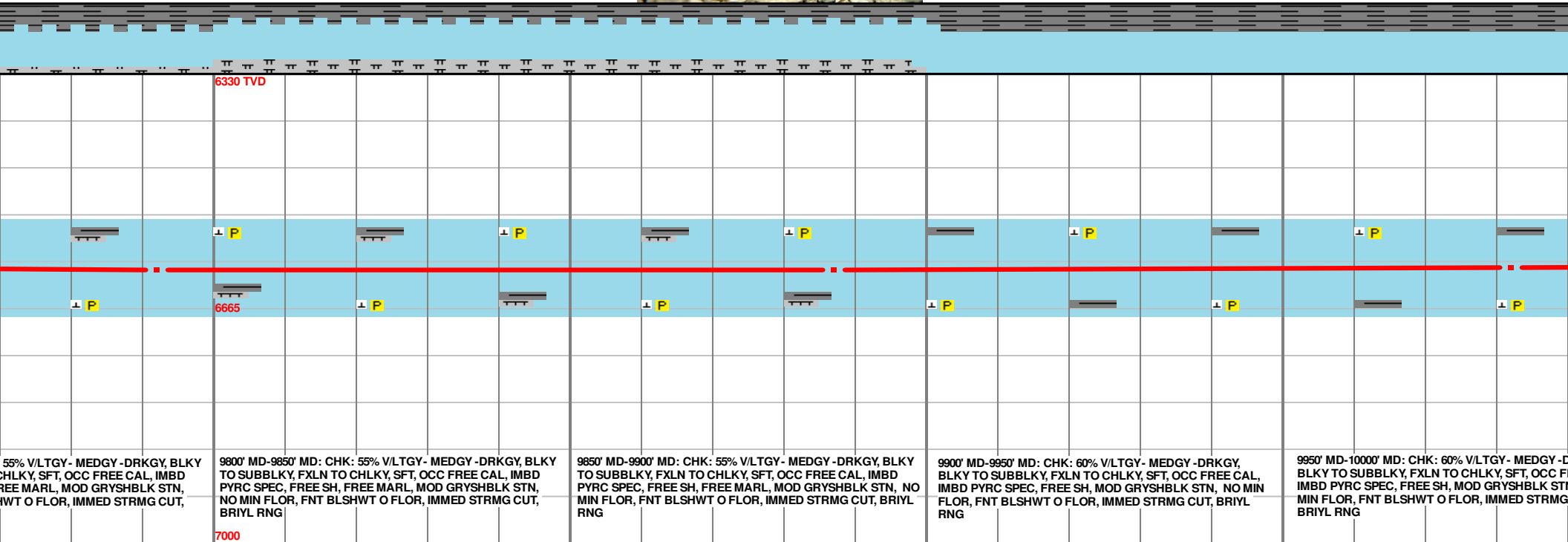
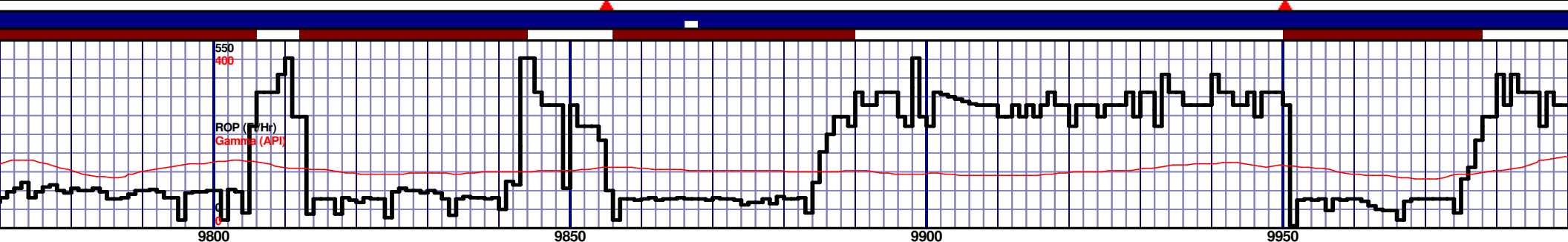
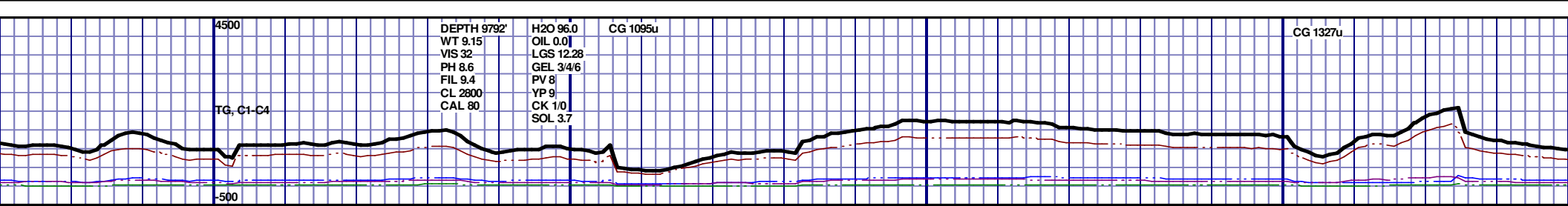




6330 TVD																			
9550' MD-9600' MD: CHK: 60% V/LTGY - MEDGY - DRKGY, BLKY TO SUBBLKY, FXLN TO CHLKY, SFT, OCC FREE CAL, IMBD PYRC SPEC, FREE SH, MOD GRYSBLK STN, NO MIN FLOR, FNT BLSHWT O FLOR, IMMED STRMG CUT, BRIYL RNG					9600' MD-9650' MD: CHK: 60% V/LTGY - MEDGY - DRKGY, BLKY TO SUBBLKY, FXLN TO CHLKY, SFT, OCC FREE CAL, IMBD PYRC SPEC, FREE SH, MOD GRYSBLK STN, NO MIN FLOR, FNT BLSHWT O FLOR, IMMED STRMG CUT, BRIYL RNG					9650' MD-9700' MD: CHK: 60% V/LTGY - MEDGY - DRKGY, BLKY TO SUBBLKY, FXLN TO CHLKY, SFT, OCC FREE CAL, IMBD PYRC SPEC, FREE SH, MOD GRYSBLK STN, NO MIN FLOR, FNT BLSHWT O FLOR, IMMED STRMG CUT, BRIYL RNG					9700' MD-9750' MD: CHK: 70% V/LTGY - MEDGY - DRKGY, BLKY TO SUBBLKY, FXLN TO CHLKY, SFT, OCC FREE CAL, IMBD PYRC SPEC, FREE SH, MOD GRYSBLK STN, NO MIN FLOR, FNT BLSHWT O FLOR, IMMED STRMG CUT, BRIYL RNG				
7000																			

MD 9602 TVD 6597.6
INC 86.88 AZ 86.6
VS 3264.83

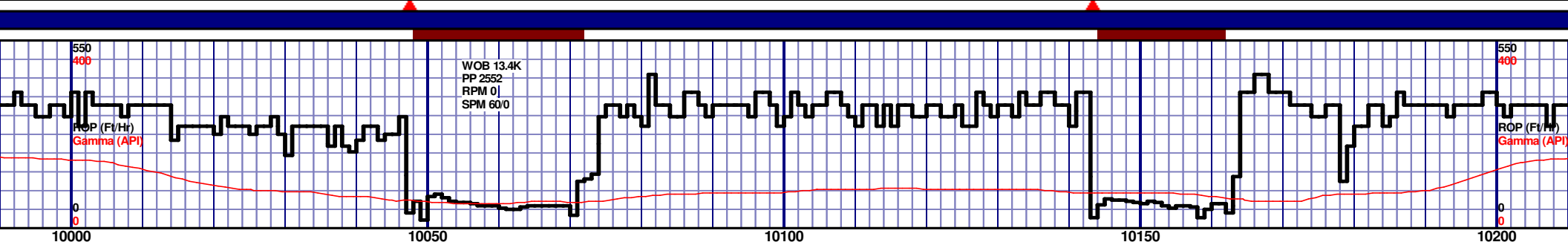
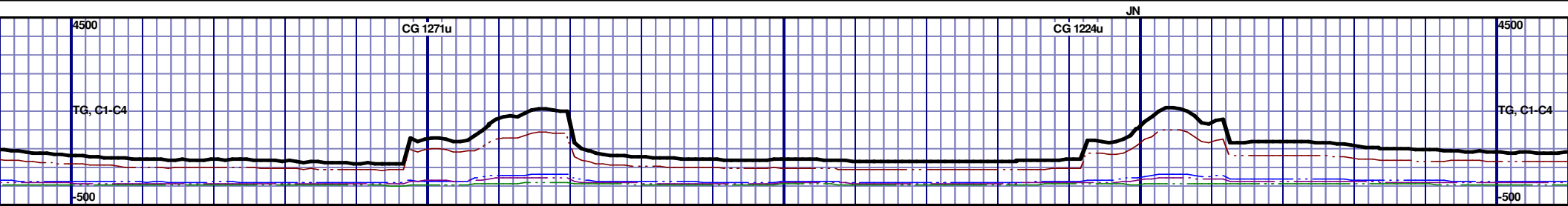
MD 9697 TVD 6603.5
INC 85.99 AZ 88.11
VS 3359.59



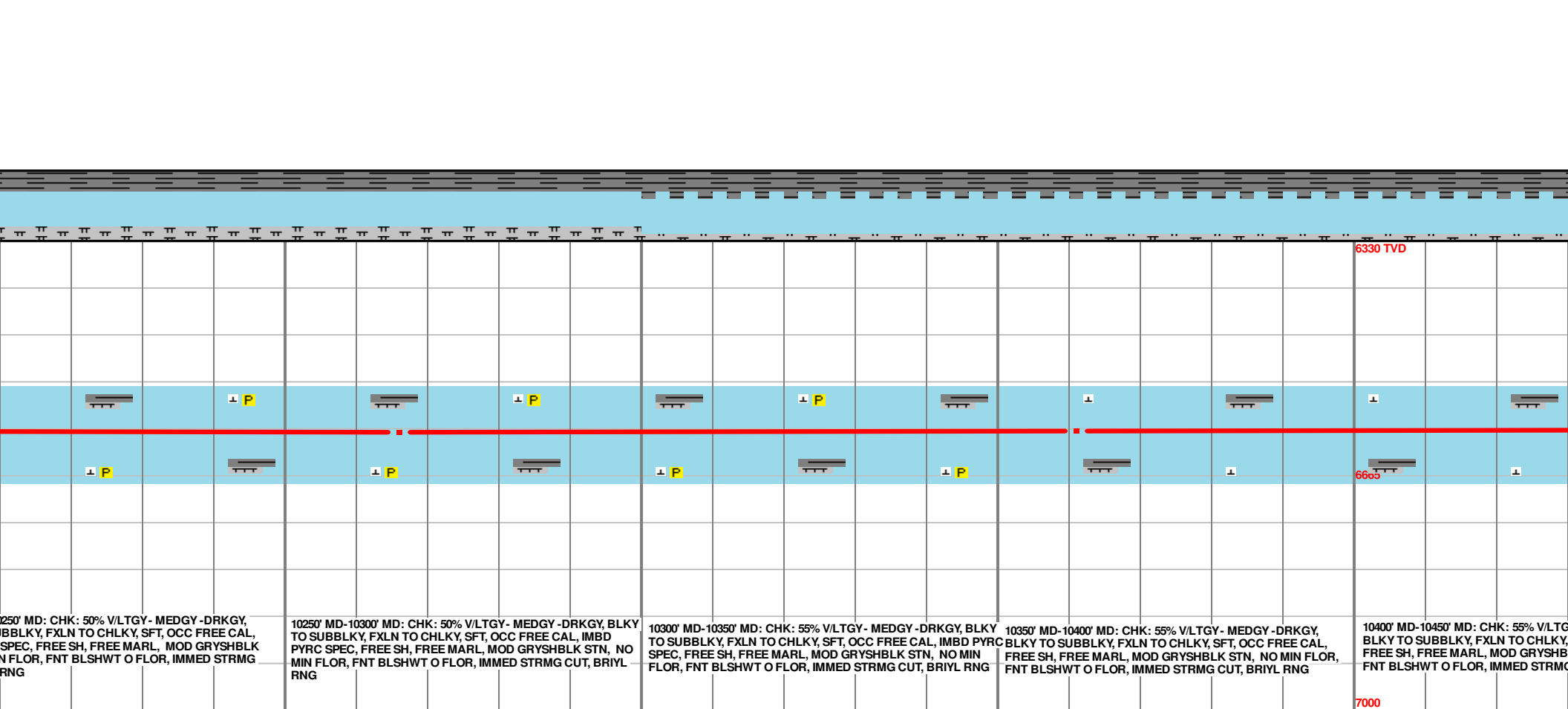
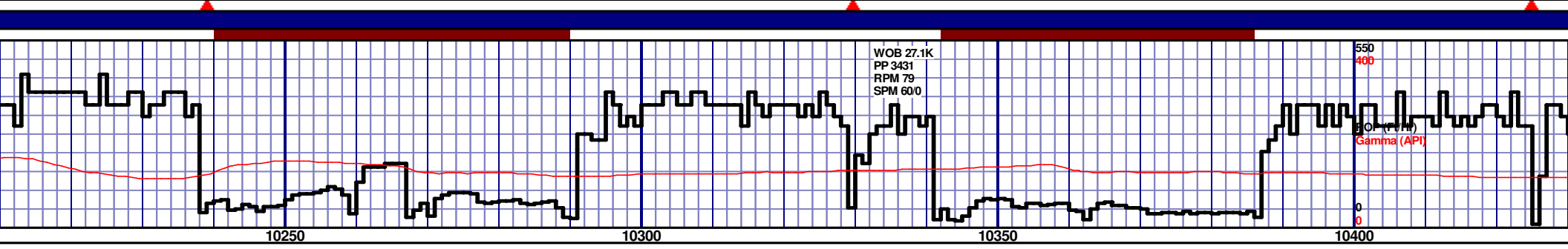
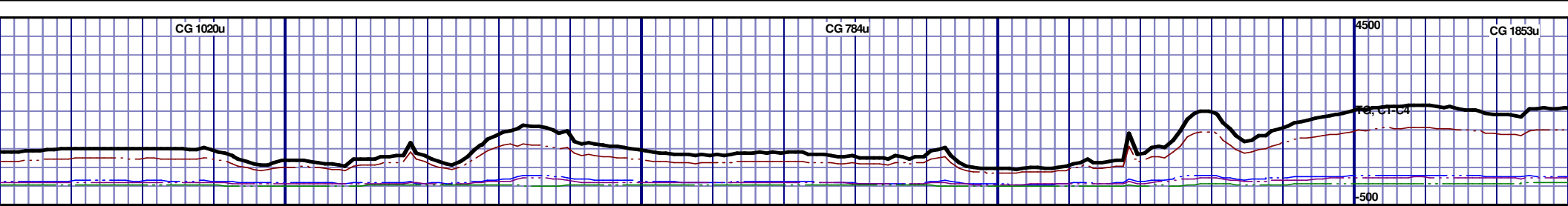
MD 9792 TVD 6609.43
INC 86.85 AZ 88.17
VS 3454.38

MD 9887 TVD 6610.3
INC 92.1 AZ 85.7
VS 3549.26

MD 9982 TVD 6610.3
INC 92.99
VS 3644.00



6330 TVD										6330 TVD									
10000' MD-10050' MD: CHK: 65% VLTGY- MEDGY-DRKGY, BLKY TO SUBBLKY, FXLN TO CHLKY, SFT, OCC FREE CAL, IMBD PYRC SPEC, FREE SH, MOD GRYSBLK STN, NO MIN FLOR, FNT BLSHWT O FLOR, IMMED STRMG CUT, BRIYL RNG										10050' MD-10100' MD: CHK: 65% VLTGY- MEDGY-DRKGY, BLKY TO SUBBLKY, FXLN TO CHLKY, SFT, OCC FREE CAL, IMBD PYRC SPEC, FREE SH, MOD GRYSBLK STN, NO MIN FLOR, FNT BLSHWT O FLOR, IMMED STRMG CUT, BRIYL RNG									
10100' MD-10150' MD: CHK: 65% VLTGY- MEDGY-DRKGY, BLKY TO SUBBLKY, FXLN TO CHLKY, SFT, OCC FREE CAL, IMBD PYRC SPEC, FREE SH, MOD GRYSBLK STN, NO MIN FLOR, FNT BLSHWT O FLOR, IMMED STRMG CUT, BRIYL RNG										10150' MD-10200' MD: CHK: 60% VLTGY- MEDGY-DRKGY, BLKY TO SUBBLKY, FXLN TO CHLKY, SFT, OCC FREE CAL, IMBD PYRC SPEC, FREE SH, MOD GRYSBLK STN, NO MIN FLOR, FNT BLSHWT O FLOR, IMMED STRMG CUT, BRIYL RNG									
10200' MD-10250' MD: CHK: 60% VLTGY- MEDGY-DRKGY, BLKY TO SUBBLKY, FXLN TO CHLKY, SFT, OCC FREE CAL, IMBD PYRC SPEC, FREE SH, MOD GRYSBLK STN, NO MIN FLOR, FNT BLSHWT O FLOR, IMMED STRMG CUT, BRIYL RNG										10200' MD-10250' MD: CHK: 60% VLTGY- MEDGY-DRKGY, BLKY TO SUBBLKY, FXLN TO CHLKY, SFT, OCC FREE CAL, IMBD PYRC SPEC, FREE SH, MOD GRYSBLK STN, NO MIN FLOR, FNT BLSHWT O FLOR, IMMED STRMG CUT, BRIYL RNG									
7000										7000									



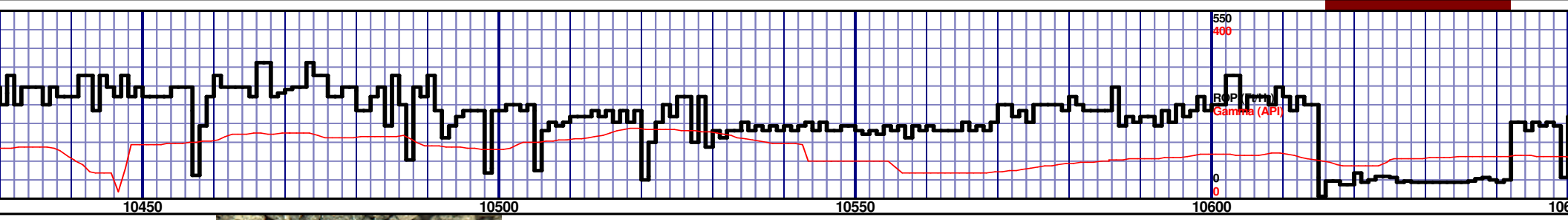
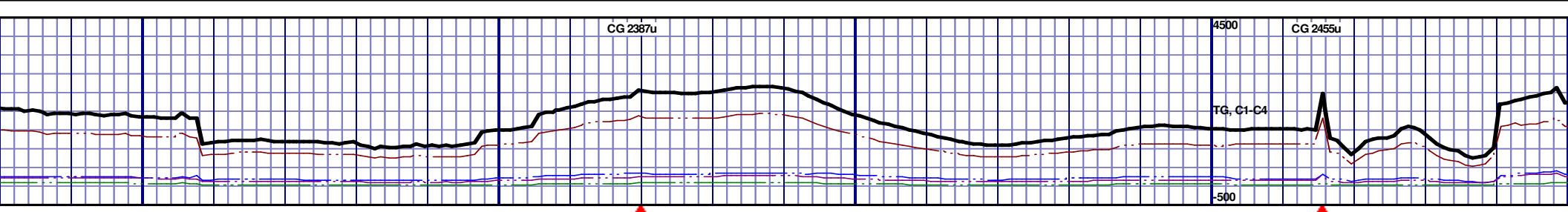
10250' MD: CHK: 50% V/LTGY - MEDGY - DRKGY, BLKY TO SUBBLKY, FXLN TO CHLKY, SFT, OCC FREE CAL, IMBD PYRC SPEC, FREE SH, FREE MARL, MOD GRYSHBLK STN, NO MIN FLOR, FNT BLSHWT O FLOR, IMMED STRMG CUT, BRIYL RNG

10250' MD-10300' MD: CHK: 50% V/LTGY - MEDGY - DRKGY, BLKY TO SUBBLKY, FXLN TO CHLKY, SFT, OCC FREE CAL, IMBD PYRC SPEC, FREE SH, FREE MARL, MOD GRYSHBLK STN, NO MIN FLOR, FNT BLSHWT O FLOR, IMMED STRMG CUT, BRIYL RNG

10300' MD-10350' MD: CHK: 55% V/LTGY - MEDGY - DRKGY, BLKY TO SUBBLKY, FXLN TO CHLKY, SFT, OCC FREE CAL, IMBD PYRC SPEC, FREE SH, FREE MARL, MOD GRYSHBLK STN, NO MIN FLOR, FNT BLSHWT O FLOR, IMMED STRMG CUT, BRIYL RNG

10350' MD-10400' MD: CHK: 55% V/LTGY - MEDGY - DRKGY, BLKY TO SUBBLKY, FXLN TO CHLKY, SFT, OCC FREE CAL, FREE SH, FREE MARL, MOD GRYSHBLK STN, NO MIN FLOR, FNT BLSHWT O FLOR, IMMED STRMG CUT, BRIYL RNG

10400' MD-10450' MD: CHK: 55% V/LTGY - MEDGY - DRKGY, BLKY TO SUBBLKY, FXLN TO CHLKY, SFT, OCC FREE CAL, FREE SH, FREE MARL, MOD GRYSHBLK STN, NO MIN FLOR, FNT BLSHWT O FLOR, IMMED STRMG CUT, BRIYL RNG

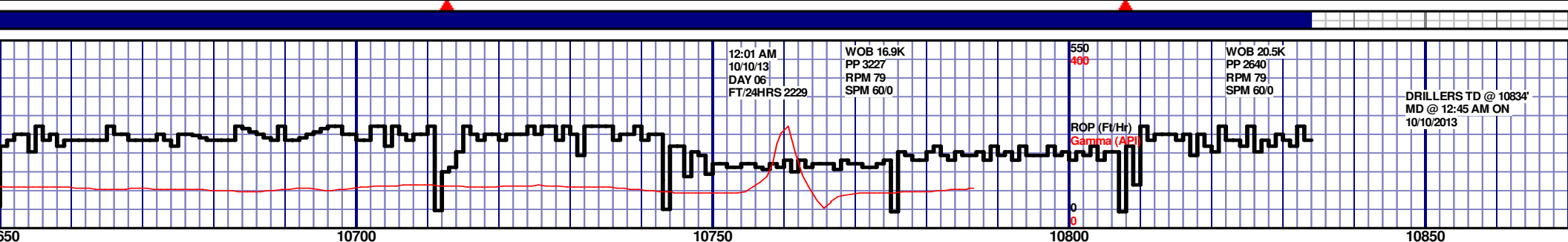
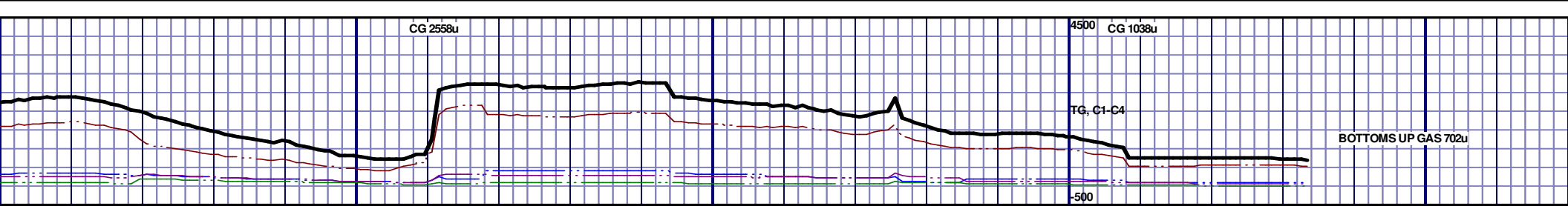


<p>10450' MD-10500' MD: CHK: 55% V/LTGY - MEDGY - DRKGY, BLKY TO SUBBLKY, FXLN TO CHLKY, SFT, OCC FREE CAL, IMBD PYRC SPEC, FREE SH, FREE MARL, MOD GRYSBLK STN, NO MIN FLOR, FNT BLSHWT O FLOR, IMMED STRMG CUT, BRIYL RNG</p>	<p>10500' MD-10550' MD: CHK: 65% V/LTGY - MEDGY - DRKGY, BLKY TO SUBBLKY, FXLN TO CHLKY, SFT, OCC FREE CAL, IMBD PYRC SPEC, FREE SH, MOD GRYSBLK STN, NO MIN FLOR, FNT BLSHWT O FLOR, IMMED STRMG CUT, BRIYL RNG</p>	<p>10550' MD-10600' MD: CHK: 60% V/LTGY - MEDGY - DRKGY, BLKY TO SUBBLKY, FXLN TO CHLKY, SFT, OCC FREE CAL, IMBD PYRC SPEC, FREE SH, MOD GRYSBLK STN, NO MIN FLOR, FNT BLSHWT O FLOR, IMMED STRMG CUT, BRIYL RNG</p>	<p>10600' MD-10650' MD: CHK: 65% V/LTGY - MEDGY - DRKGY, BLKY TO SUBBLKY, FXLN TO CHLKY, SFT, OCC FREE CAL, IMBD PYRC SPEC, FREE SH, MOD GRYSBLK STN, NO MIN FLOR, FNT BLSHWT O FLOR, IMMED STRMG CUT, BRIYL RNG</p>
---	--	--	--

MD 10456 TVD 6599.2
INC 92.16 AZ 90.72
VS 4117.44

MD 10551 TVD 6594.75
INC 93.21 AZ 89.52
VS 4212.32

MD
INC
VS 4



<p>10650' MD-10700' MD: CHK: 65% V/LTGY - MEDGY - DRKGY, BLKY TO SUBBLKY, FXLN TO CHLKY, SFT, OCC FREE CAL, IMBD PYRC SPEC, FREE SH, MOD GRYSBLK STN, NO MIN FLOR, FNT BLSHWT O FLOR, IMMED STRMG CUT, BRIYL RNG</p>	<p>10700' MD-10750' MD: CHK: 70% V/LTGY - MEDGY - DRKGY, BLKY TO SUBBLKY, FXLN TO CHLKY, SFT, OCC FREE CAL, IMBD PYRC SPEC, FREE SH, MOD GRYSBLK STN, NO MIN FLOR, FNT BLSHWT O FLOR, IMMED STRMG CUT, BRIYL RNG</p>	<p>10750' MD-10800' MD: CHK: 70% V/LTGY - MEDGY - DRKGY, BLKY TO SUBBLKY, FXLN TO CHLKY, SFT, OCC FREE CAL, IMBD PYRC SPEC, FREE SH, MOD GRYSBLK STN, NO MIN FLOR, FNT BLSHWT O FLOR, IMMED STRMG CUT, BRIYL RNG</p>	<p>10800' MD-10834' MD: CHK: 70% V/LTGY - MEDGY - DRKGY, BLKY TO SUBBLKY, FXLN TO CHLKY, SFT, OCC FREE CAL, IMBD PYRC SPEC, FREE SH, MOD GRYSBLK STN, NO MIN FLOR, FNT BLSHWT O FLOR, IMMED STRMG CUT, BRIYL RNG</p>	<p>6330 TVD</p> <p>TD @ 10834' MD</p> <p>RELEASED ON 10/10/2013</p> <p>THANK YOU FROM TOM DENNEY, JER NEEDHAM AND HORIZON WE LOGGING, LLC</p>
--	--	--	--	---

