

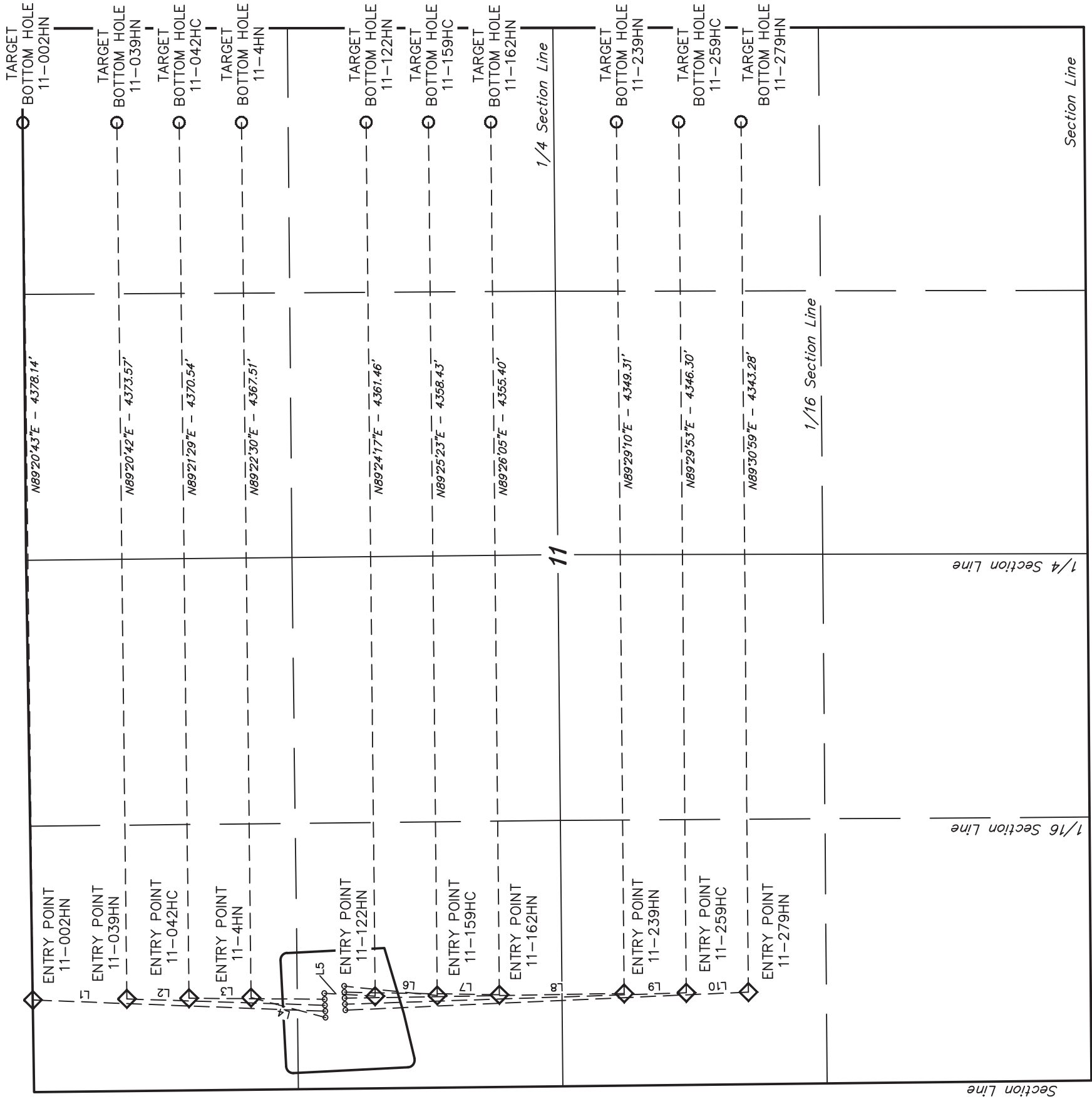
S C A L E

DATE: 05-07-13
DRAWN BY: J.W.
REVISED: 09-12-13
REVISED: 11-04-13
REVISED: 12-26-13 J.S.
REVISED: 02-26-14 J.S.

GREAT WESTERN OIL & GAS COMPANY

TARGET BOTTOM HOLE DRAWING FOR
POSTLE IC 11-159HC, 11-162HN, 11-239HN, 11-259HC,
11-279HN, 11-122HN, 11-042HC, 11-039HN & 11-002HN
ON EXISTING POSTLE IC 11-4HN PAD
SECTION 11, T3N, R68W, 6th P.M.
SW 1/4 NW 1/4

FIGURE #6



LINE TABLE		
LINE	DIRECTION	LENGTH
L1	N02°12'41"E	1460.70'
L2	N01°49'54"E	989.64'
L3	N00°25'50"E	677.62'
L4	N15°00'31"E	385.92'
L5	S03°19'26"W	253.76'
L6	S05°42'00"W	466.78'
L7	S00°57'36"W	773.22'
L8	S00°58'50"E	1394.62'
L9	S01°55'40"E	1703.81'
L10	S02°34'55"E	2013.02'