

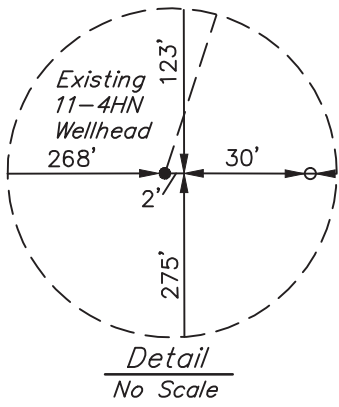
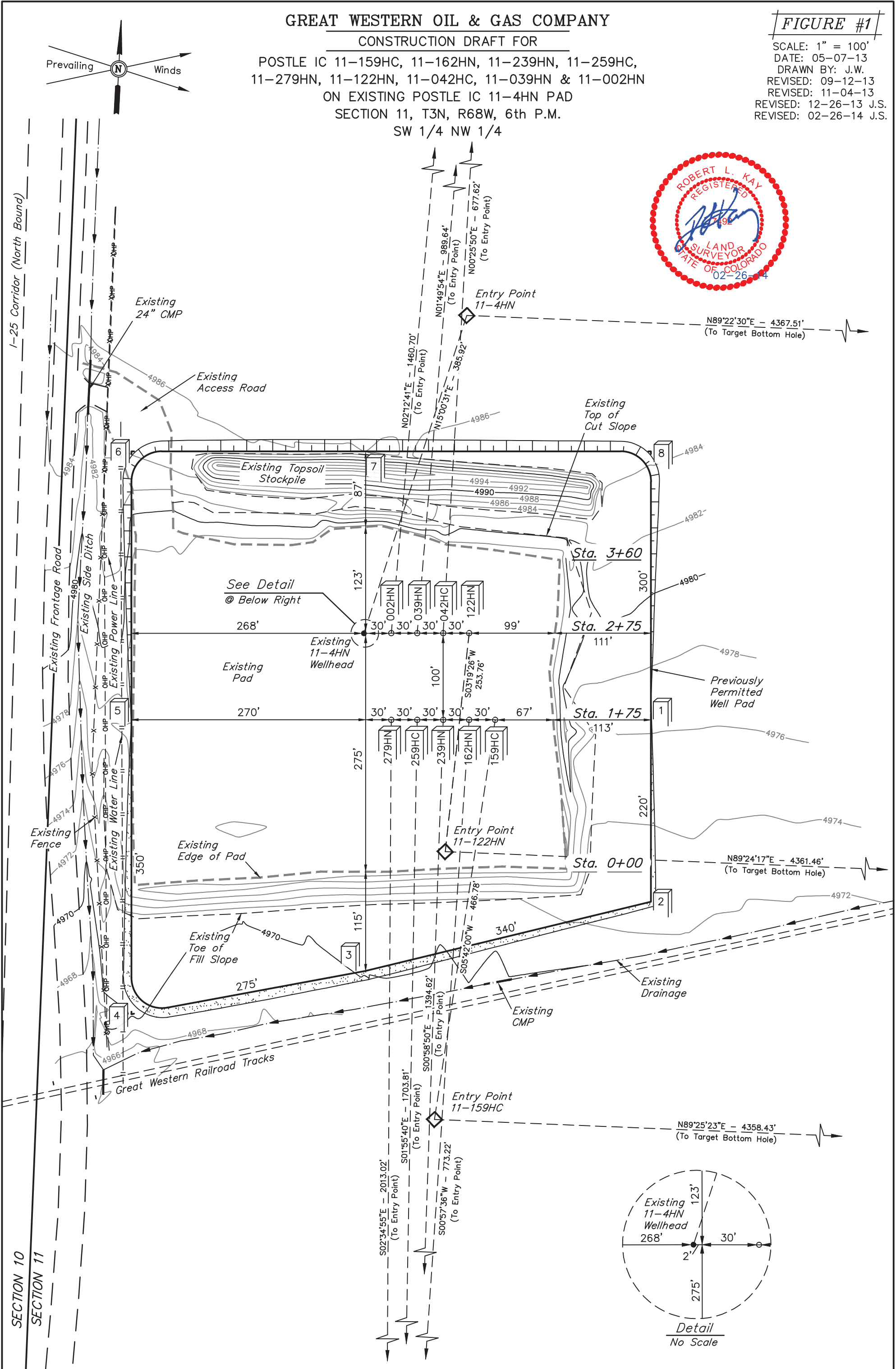
GREAT WESTERN OIL & GAS COMPANY

CONSTRUCTION DRAFT FOR

POSTLE IC 11-159HC, 11-162HN, 11-239HN, 11-259HC,
11-279HN, 11-122HN, 11-042HC, 11-039HN & 11-002HN
ON EXISTING POSTLE IC 11-4HN PAD
SECTION 11, T3N, R68W, 6th P.M.
SW 1/4 NW 1/4

FIGURE #1

SCALE: 1" = 100'
DATE: 05-07-13
DRAWN BY: J.W.
REVISED: 09-12-13
REVISED: 11-04-13
REVISED: 12-26-13 J.S.
REVISED: 02-26-14 J.S.



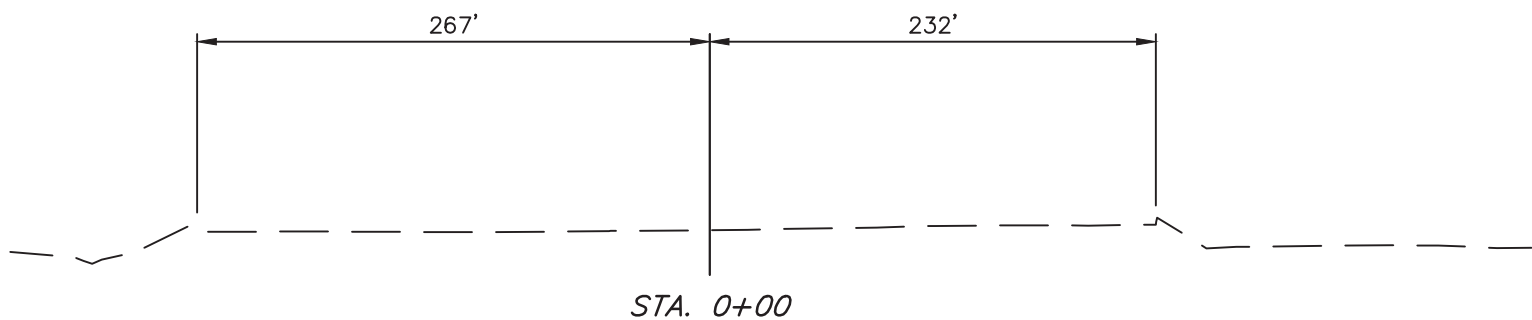
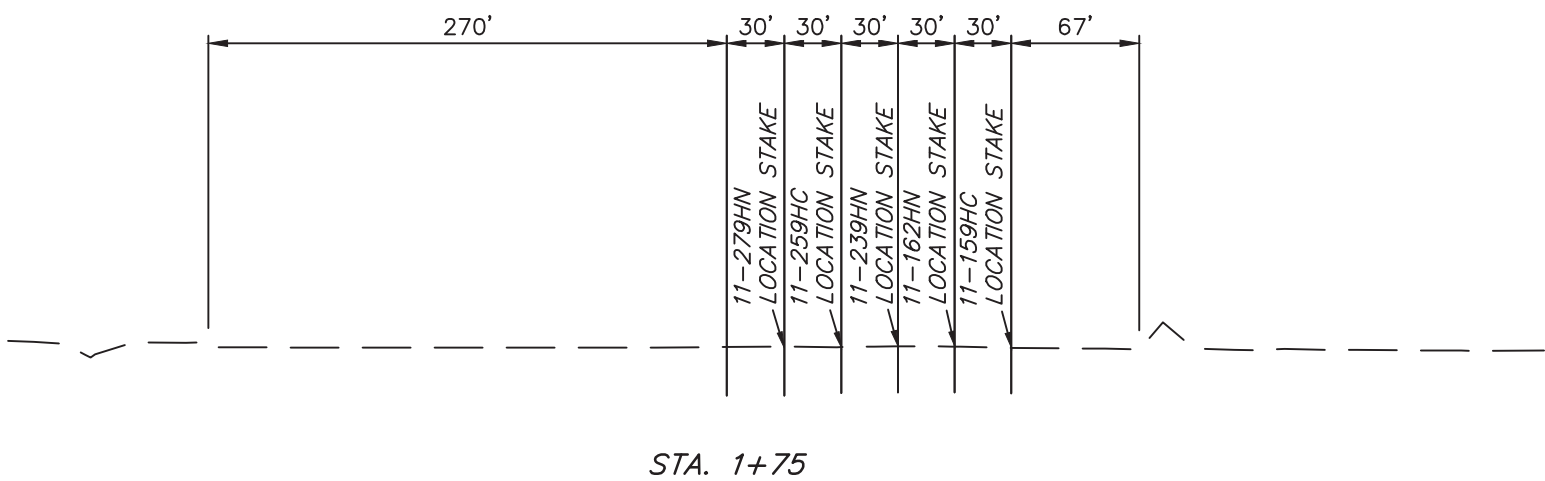
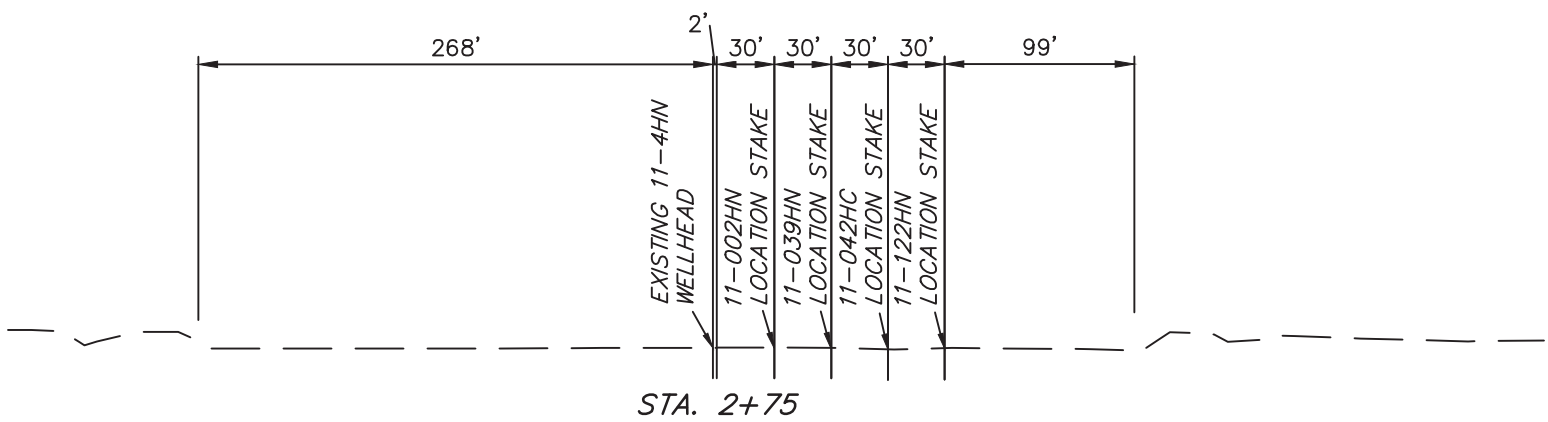
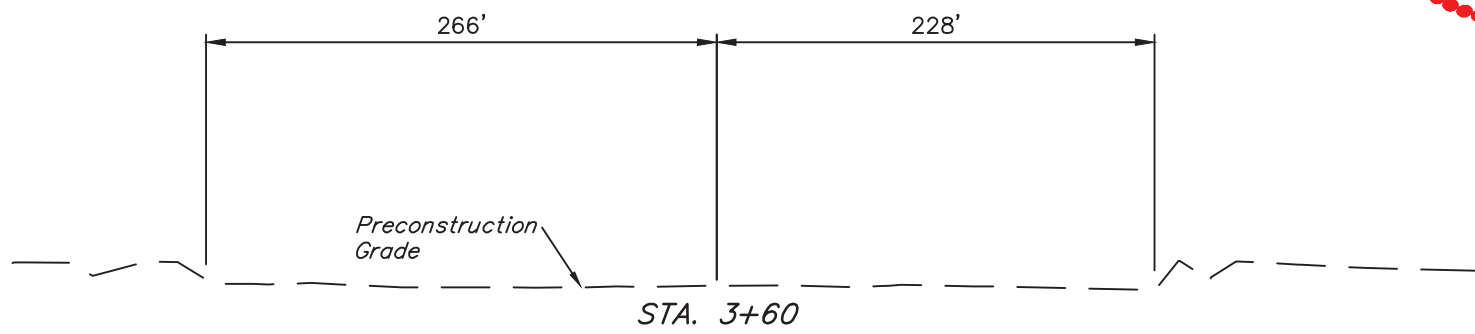
FINISHED GRADE ELEV. AT 11-259HC LOC. STAKE = 4976.9'

UINTAH ENGINEERING & LAND SURVEYING
85 So. 200 East * Vernal, Utah 84078 * (435) 789-1017

1" = 40'
X-Section
Scale
1" = 100'
DATE: 05-07-13
DRAWN BY: J.W.
REVISED: 09-12-13
REVISED: 11-04-13
REVISED: 12-26-13 J.S.
REVISED: 02-26-14 J.S.

GREAT WESTERN OIL & GAS COMPANY
CONSTRUCTION LAYOUT CROSS SECTIONS FOR
POSTLE IC 11-159HC, 11-162HN, 11-239HN, 11-259HC,
11-279HN, 11-122HN, 11-042HC, 11-039HN & 11-002HN
ON EXISTING POSTLE IC 11-4HN PAD
SECTION 11, T3N, R68W, 6th P.M.
SW 1/4 NW 1/4

FIGURE #2



APPROXIMATE ACREAGE
PREVIOUSLY PERMITTED WELL SITE DISTURBANCE = ± 9.079 ACRES
EXISTING WELL SITE DISTURBANCE = ± 4.321 ACRES