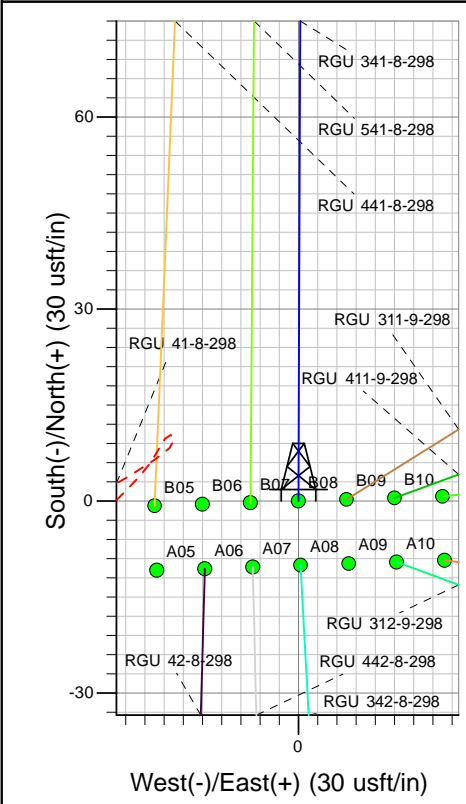
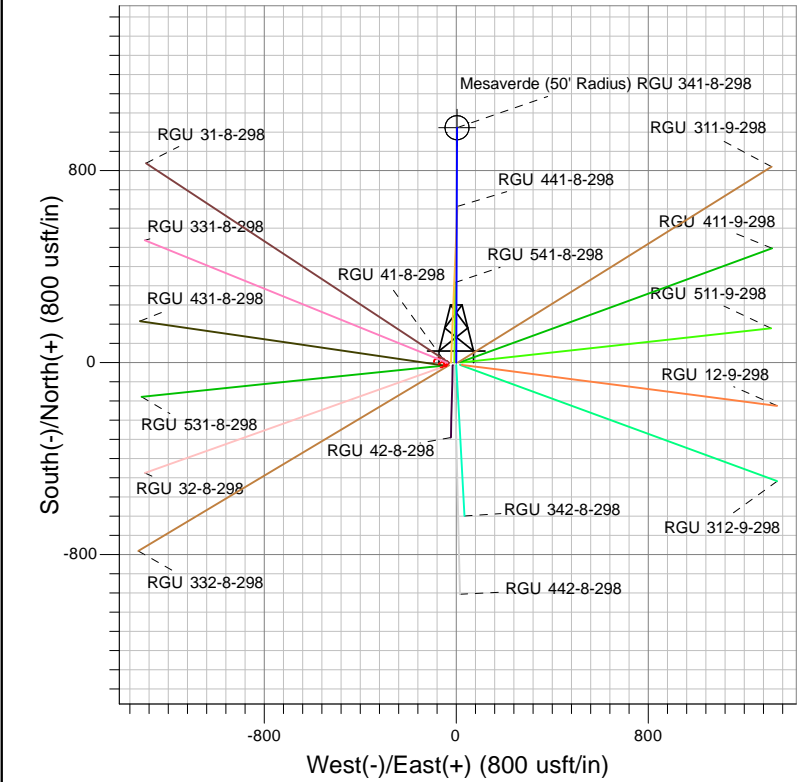
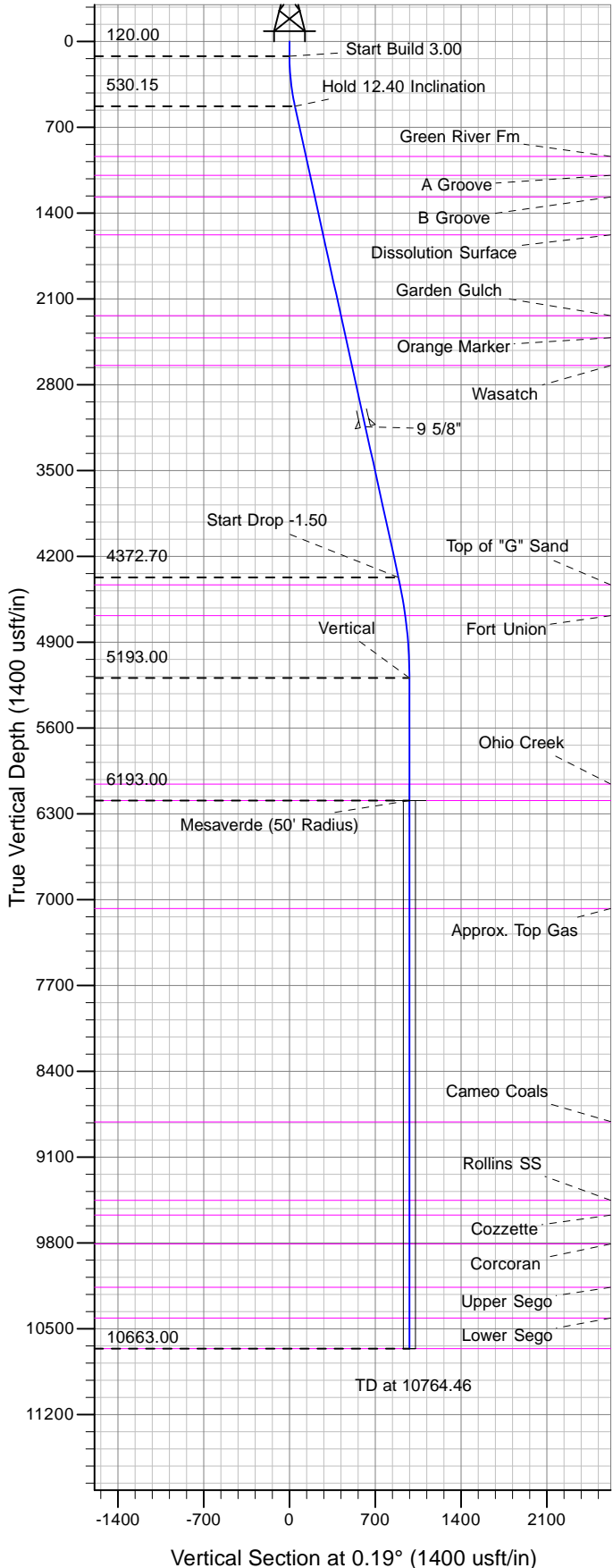




Well Name: RGU 341-8-298  
Surface Location: RGU 41-8-298 Pad  
North American Datum 1983 , US State Plane 1983 , Colorado Central Zone  
Ground Elevation: 6752.00  
+N/-S    +E/-W    Northing    Easting    Latitude    Longitude    Slot  
0.00    0.00    1764156.60    2184108.70    39.89557    -108.40818    B08  
KELLY BUSHING @ 6773.00usft (Cyclone 29 (21' RKB) kjs)



Project: RG 08-02S-098W  
Site: RGU 41-8-298 Pad  
Well: RGU 341-8-298  
Design #2 06Jan14 kjs

**T M**  
Azimuths to True North  
Magnetic North: 10.26°  
Magnetic Field  
Strength: 52219.9snT  
Dip Angle: 65.94°  
Date: 9/23/2013  
Model: IGRF2005-10

ANNOTATIONS									
TVD	MD	Inc	Azi	+N/-S	+E/-W	VSec	Departure	Annotation	
120.00	120.00	0.00	0.00	0.00	0.00	0.00	0.00	Start Build 3.00	
530.15	533.37	12.40	0.19	44.56	0.15	44.56	44.56	Hold 12.40 Inclination	
4372.70	4467.72	12.40	0.19	889.47	2.93	889.48	889.48	Start Drop -1.50	
5193.00	5294.46	0.00	0.00	978.59	3.22	978.60	978.60	Vertical	
6193.00	6294.46	0.00	0.00	978.59	3.22	978.60	978.60	Mesaverde	
10663.00	10764.46	0.00	0.00	978.59	3.22	978.60	978.60	TD at 10764.46	