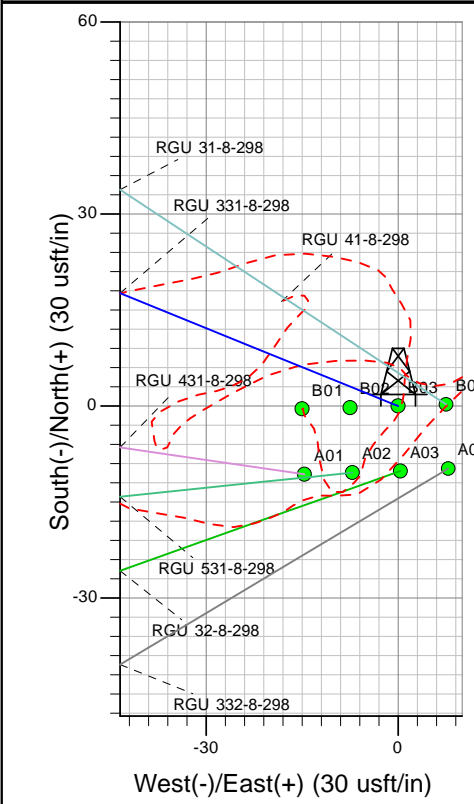
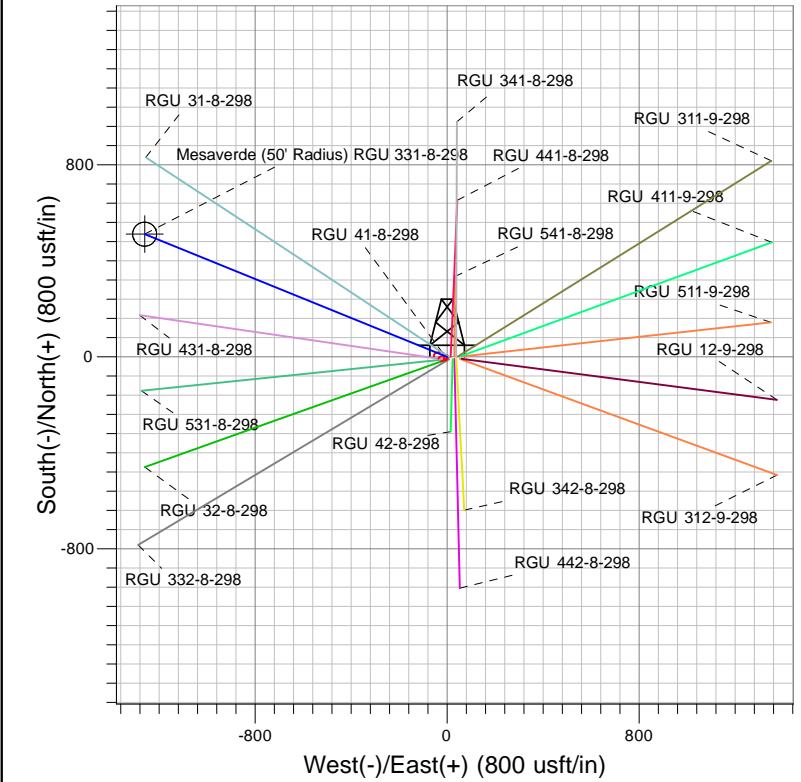
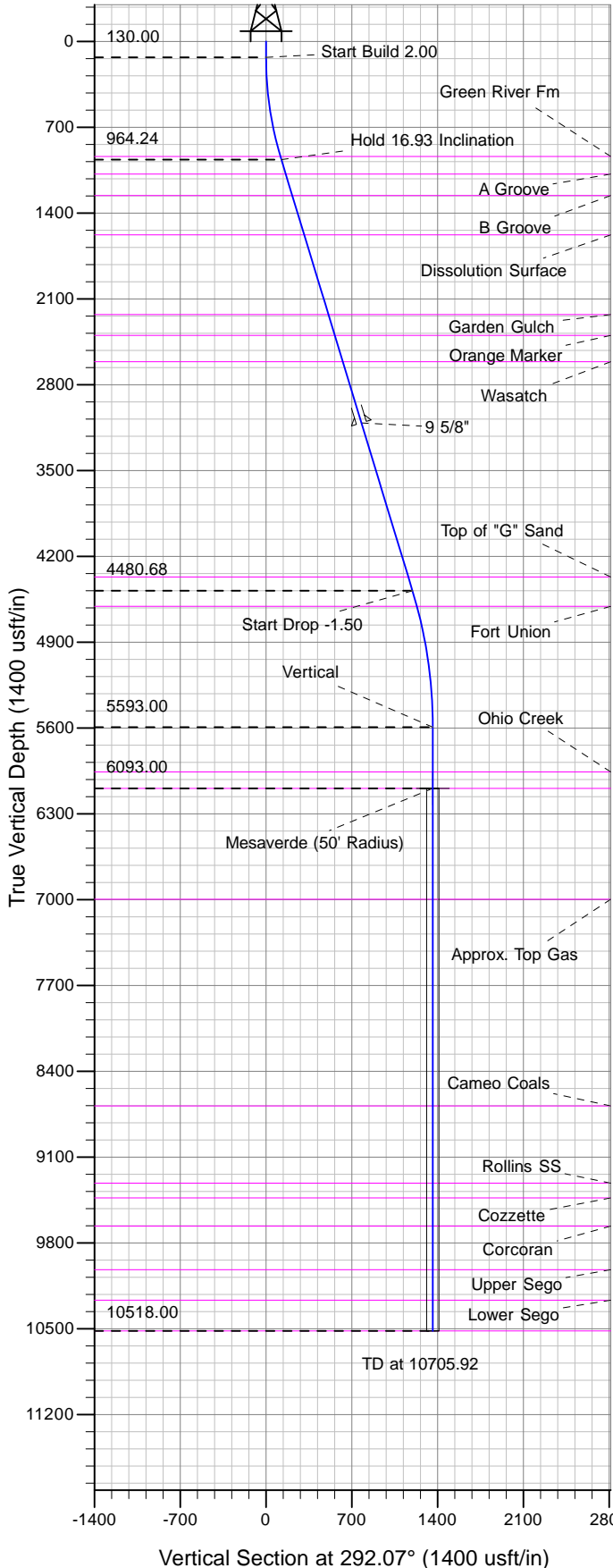




Well Name: RGU 331-8-298
Surface Location: RGU 41-8-298 Pad
North American Datum 1983 , US State Plane 1983 , Colorado Central Zone
Ground Elevation: 6752.00
+N/-S +E/-W Northing Easting Latitude Longitude Slot
0.00 0.00 1764156.60 2184071.20 39.89557 -108.40831 B03
KELLY BUSHING @ 6773.00usft (Cyclone 29 (21' RKB) kjs)



Project: RG 08-02S-098W
Site: RGU 41-8-298 Pad
Well: RGU 331-8-298
Design #3 23Jan14 kjs

Azimuths to True North
Magnetic North: 10.26°
Magnetic Field
Strength: 52219.9snT
Dip Angle: 65.94°
Date: 9/23/2013
Model: IGRF2005-10

ANNOTATIONS									
TVD	MD	Inc	Azi	+N/-S	+E/-W	VSec	Departure	Annotation	
130.00	130.00	0.00	0.00	0.00	0.00	0.00	0.00	Start Build 2.00	
964.24	976.50	16.93	292.07	46.66	-115.06	124.16	124.16	Hold 16.93 Inclination	
4480.68	4652.25	16.93	292.07	448.91	-1106.99	1194.55	1194.55	Start Drop -1.50	
5593.00	5780.92	0.00	0.00	511.12	-1260.40	1360.09	1360.09	Vertical	
6093.00	6280.92	0.00	0.00	511.12	-1260.40	1360.09	1360.09	Mesaverde	
10518.00	10705.92	0.00	0.00	511.12	-1260.40	1360.09	1360.09	TD at 10705.92	