

WELL LOCATION PLAT

T3S, R64W, 6th P.M.

ConocoPhillips Company

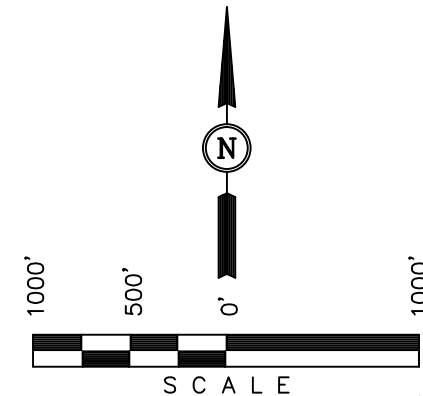
Well location, VENTURERS #41-4H, located as shown in the NE 1/4 NE 1/4 of Section 19, T3S, R64W, 6th P.M., Adams County, Colorado.

BASIS OF ELEVATION

BENCHMARK 374 LOCATED ON THE SECTION LINE BETWEEN SECTIONS 12 & 13, T5S, R64W, 6th. P.M., TAKEN FROM 1988 PUBLISHED DATUM BY THE UNITED STATES DEPARTMENT OF THE INTERIOR, GEOLOGICAL SURVEY AS BEING 6054.61 FEET.

BASIS OF BEARINGS

BASIS OF BEARINGS IS A G.P.S. OBSERVATION.

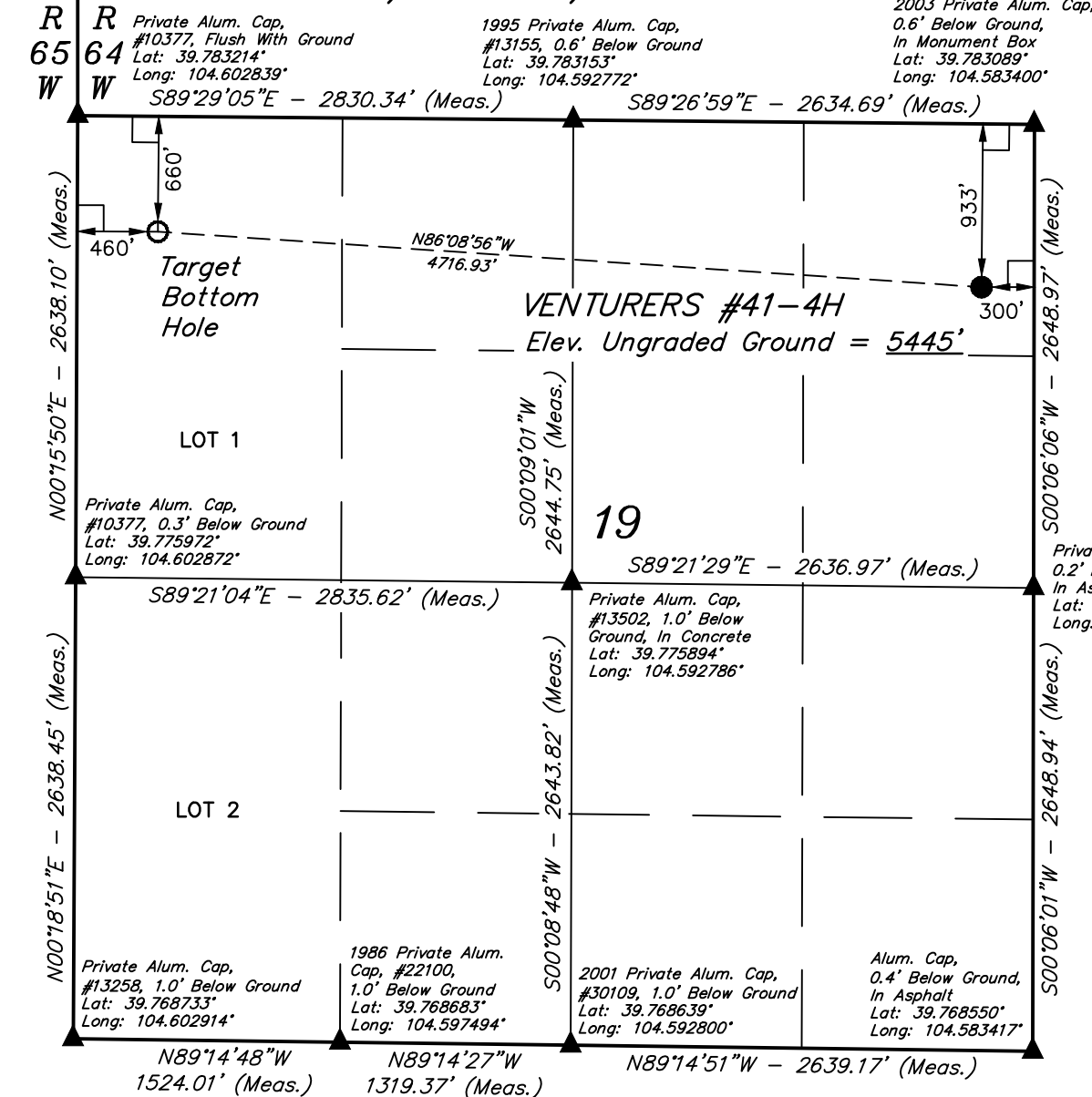


CERTIFICATION

THIS IS TO CERTIFY THAT THE ABOVE PLAT WAS PREPARED FROM FIELD NOTES OF ACTUAL SURVEYS MADE BY ME OR UNDER MY SUPERVISION AND THAT THE SAME ARE TRUE AND CORRECT TO THE BEST OF MY KNOWLEDGE AND BELIEF.

REGISTERED LAND SURVEYOR
REGISTRATION NO. 28285
STATE OF COLORADO 08-18-13

UINTAH ENGINEERING & LAND SURVEYING
85 SOUTH 200 EAST - VERNAL, UTAH 84078
(435) 789-1017



LEGEND:

- └─┘ = 90° SYMBOL
- = PROPOSED WELL HEAD.
- ▲ = SECTION CORNERS LOCATED.

PDOP = 1.8

NAD 83 (TARGET BOTTOM HOLE)	NAD 83 (SURFACE HOLE)
LATITUDE = 39°46'53.01" (39.781392)	LATITUDE = 39°46'49.93" (39.780536)
LONGITUDE = 104°36'04.36" (104.601211)	LONGITUDE = 104°35'04.09" (104.584469)
NAD 27 (TARGET BOTTOM HOLE)	NAD 27 (SURFACE HOLE)
LATITUDE = 39°46'53.06" (39.781406)	LATITUDE = 39°46'49.98" (39.780550)
LONGITUDE = 104°36'02.48" (104.600689)	LONGITUDE = 104°35'02.22" (104.583950)

SCALE 1" = 1000'	DATE SURVEYED: 06-11-13	DATE DRAWN: 06-17-13
PARTY D.N. G.W. J.S.	REFERENCES G.L.O. PLAT	
WEATHER HOT	FILE ConocoPhillips Company	

SECTION BREAKDOWN T3S, R64W, 6th P.M.

ConocoPhillips Company

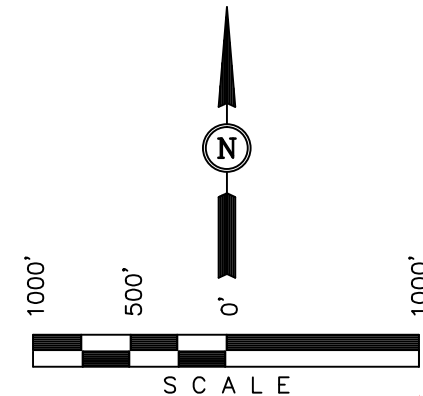
Well location, VENTURERS #41-4H, located as shown in the NE 1/4 NE 1/4 of Section 19, T3S, R64W, 6th P.M., Adams County, Colorado.

BASIS OF ELEVATION

BENCHMARK 374 LOCATED ON THE SECTION LINE BETWEEN SECTIONS 12 & 13, T5S, R64W, 6th. P.M., TAKEN FROM 1988 PUBLISHED DATUM BY THE UNITED STATES DEPARTMENT OF THE INTERIOR, GEOLOGICAL SURVEY AS BEING 6054.61 FEET.

BASIS OF BEARINGS

BASIS OF BEARINGS IS A G.P.S. OBSERVATION.



CERTIFICATION

THIS IS TO CERTIFY THAT THE ABOVE PLAT WAS PREPARED FROM FIELD NOTES OF ACTUAL SURVEYS MADE BY ME OR UNDER MY SUPERVISION AND THAT THE SAME ARE TRUE AND CORRECT TO THE BEST OF MY KNOWLEDGE AND BELIEF.

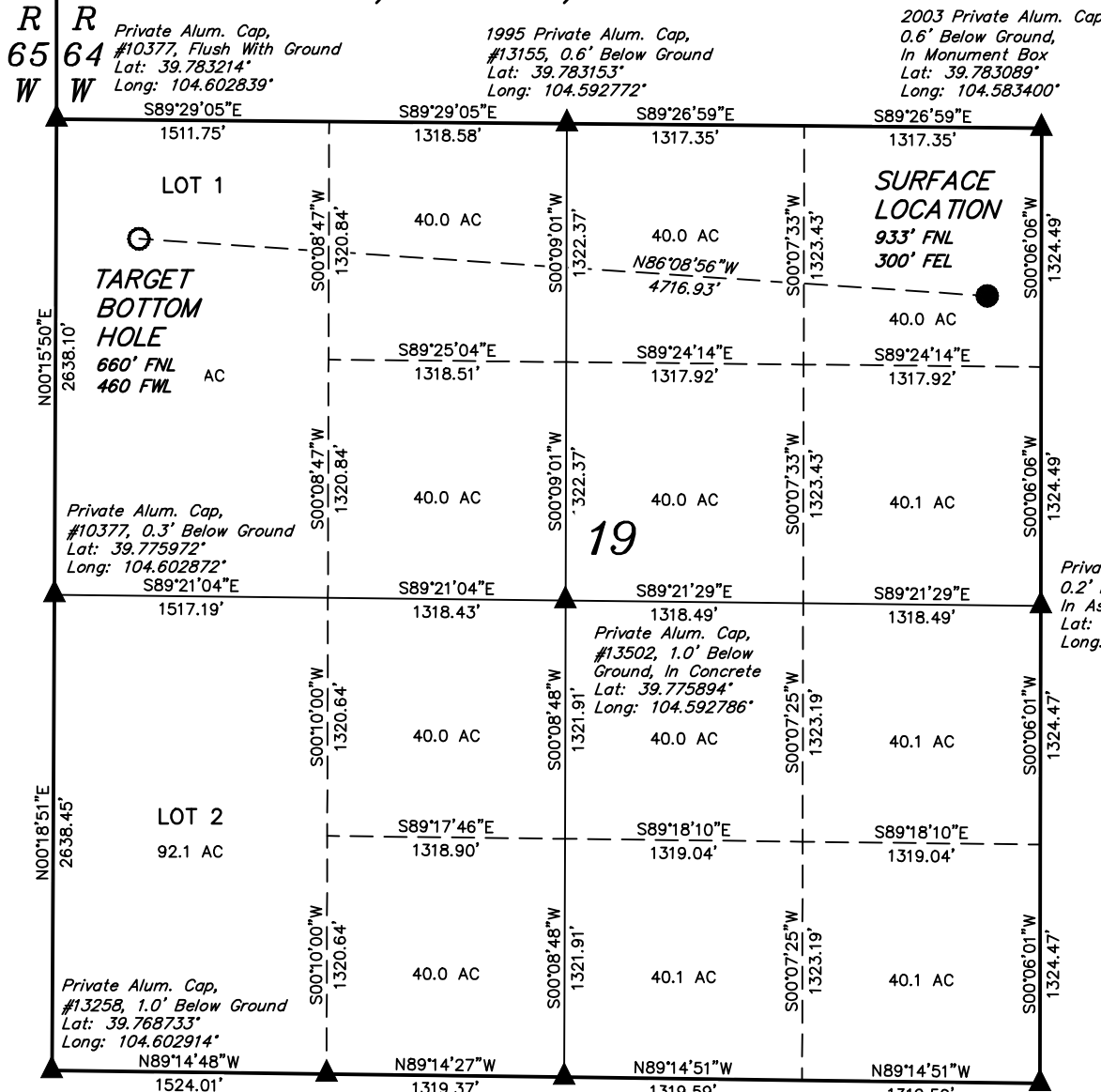
REGISTERED LAND SURVEYOR
REGISTRATION NO. 28285
STATE OF COLORADO

UINTAH ENGINEERING & LAND SURVEYING
85 SOUTH 200 EAST - VERNAL, UTAH 84078
(435) 789-1017

LEGEND:

- └─┘ = 90° SYMBOL
- = PROPOSED WELL HEAD.
- ▲ = SECTION CORNERS LOCATED.

NAD 83 (TARGET BOTTOM HOLE)	NAD 83 (SURFACE HOLE)
LATITUDE = 39°46'53.01" (39.781392)	LATITUDE = 39°46'49.93" (39.780536)
LONGITUDE = 104°36'04.36" (104.601211)	LONGITUDE = 104°35'04.09" (104.584469)
NAD 27 (TARGET BOTTOM HOLE)	NAD 27 (SURFACE HOLE)
LATITUDE = 39°46'53.06" (39.781406)	LATITUDE = 39°46'49.98" (39.780550)
LONGITUDE = 104°36'02.48" (104.600689)	LONGITUDE = 104°35'02.22" (104.583950)



1986 Private Alum. Cap, #22100, 1.0' Below Ground
Lat: 39.768683°
Long: 104.597494°

2001 Private Alum. Cap, #30109, 1.0' Below Ground
Lat: 39.768639°
Long: 104.592800°

Alum. Cap, 0.4' Below Ground, In Asphalt
Lat: 39.768550°
Long: 104.583417°

Private Alum. Cap, 0.2' Below Ground, In Asphalt
Lat: 39.775819°
Long: 104.583408°

Private Alum. Cap, #10377, Flush With Ground
Lat: 39.783214°
Long: 104.602839°

1995 Private Alum. Cap, #13155, 0.6' Below Ground
Lat: 39.783153°
Long: 104.592772°

2003 Private Alum. Cap, 0.6' Below Ground, In Monument Box
Lat: 39.783089°
Long: 104.583400°