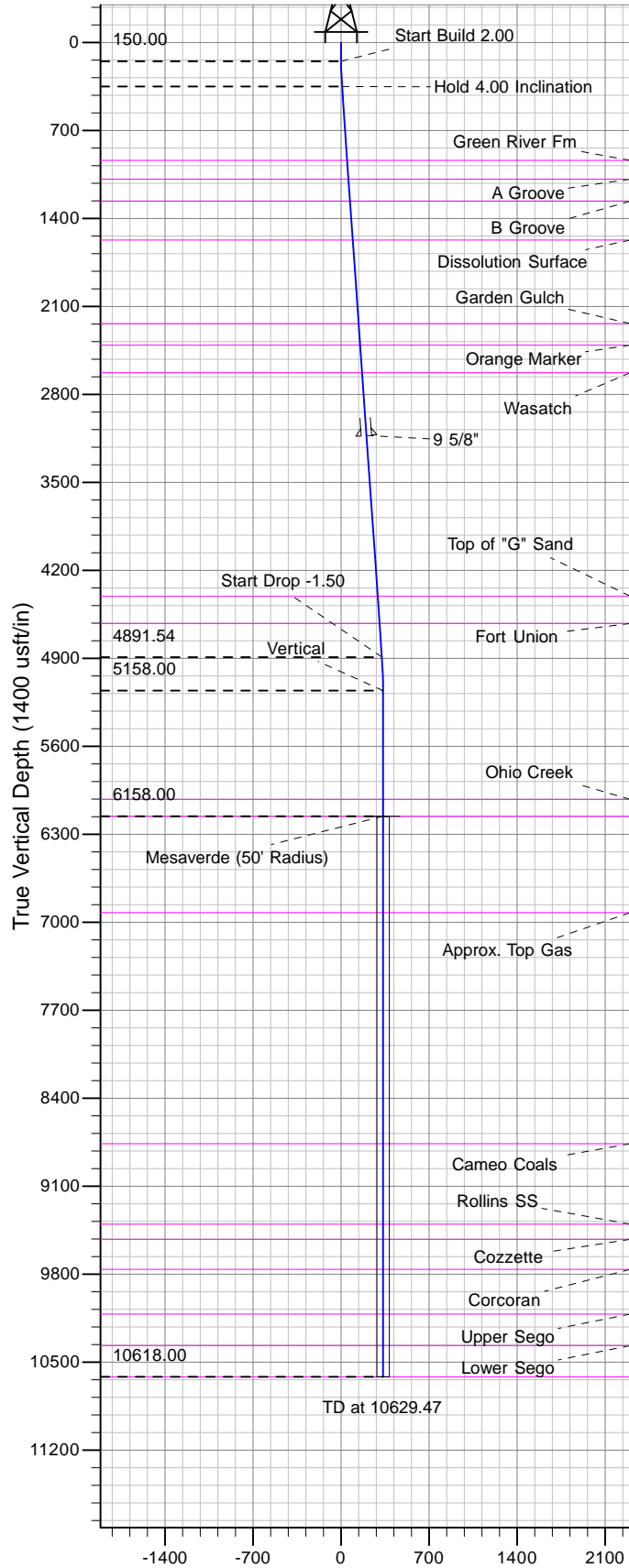
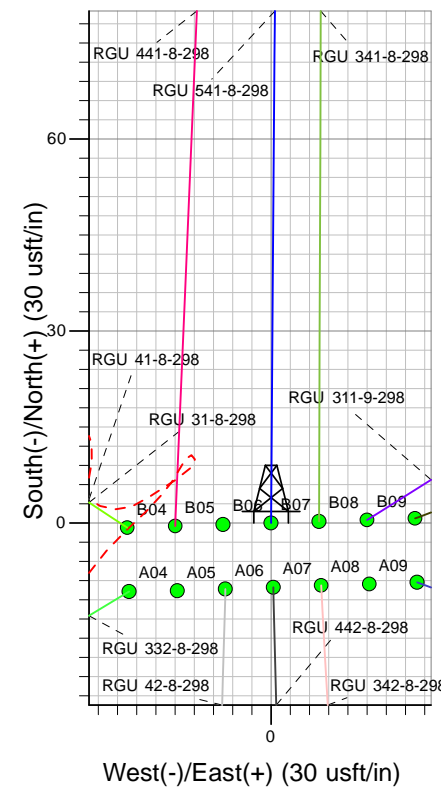
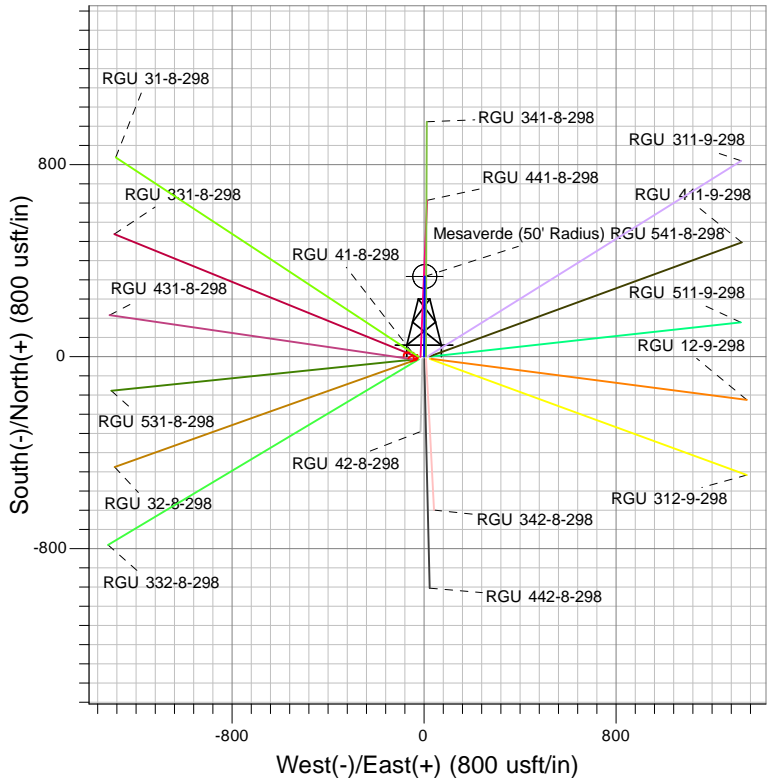




Well Name: RGU 541-8-298
Surface Location: RGU 41-8-298 Pad
North American Datum 1983 , US State Plane 1983 , Colorado Central Zone
Ground Elevation: 6752.00
+N/-S +E/-W Northing Easting Latitude Longitude Slot
0.00 0.00 1764156.60 2184101.20 39.89557 -108.40821 B07
KELLY BUSHING @ 6773.00usft (Cyclone 29 (21' RKB) kjs)



Vertical Section at 0.42° (1400 usft/in)



Project: RG 08-02S-098W
Site: RGU 41-8-298 Pad
Well: RGU 541-8-298
Design #2 06Jan14 kjs

T M
Azimuths to True North
Magnetic North: 10.26°
Magnetic Field
Strength: 52219.9snT
Dip Angle: 65.94°
Date: 9/23/2013
Model: IGRF2005-10

ANNOTATIONS									
TVD	MD	Inc	Azi	+N/-S	+E/-W	Vsect	Departure	Annotation	
150.00	150.00	0.00	0.00	0.00	0.00	0.00	0.00	Start Build 2.00	
349.85	350.01	4.00	0.42	6.98	0.05	6.98	6.98	Hold 4.00 Inclination	
4891.54	4902.79	4.00	0.42	324.57	2.35	324.58	324.58	Start Drop -1.50	
5158.00	5169.47	0.00	0.00	333.88	2.42	333.89	333.89	Vertical	
6158.00	6169.47	0.00	0.00	333.88	2.42	333.89	333.89	Mesaverde	
10618.00	10629.47	0.00	0.00	333.88	2.42	333.89	333.89	TD at 10629.47	