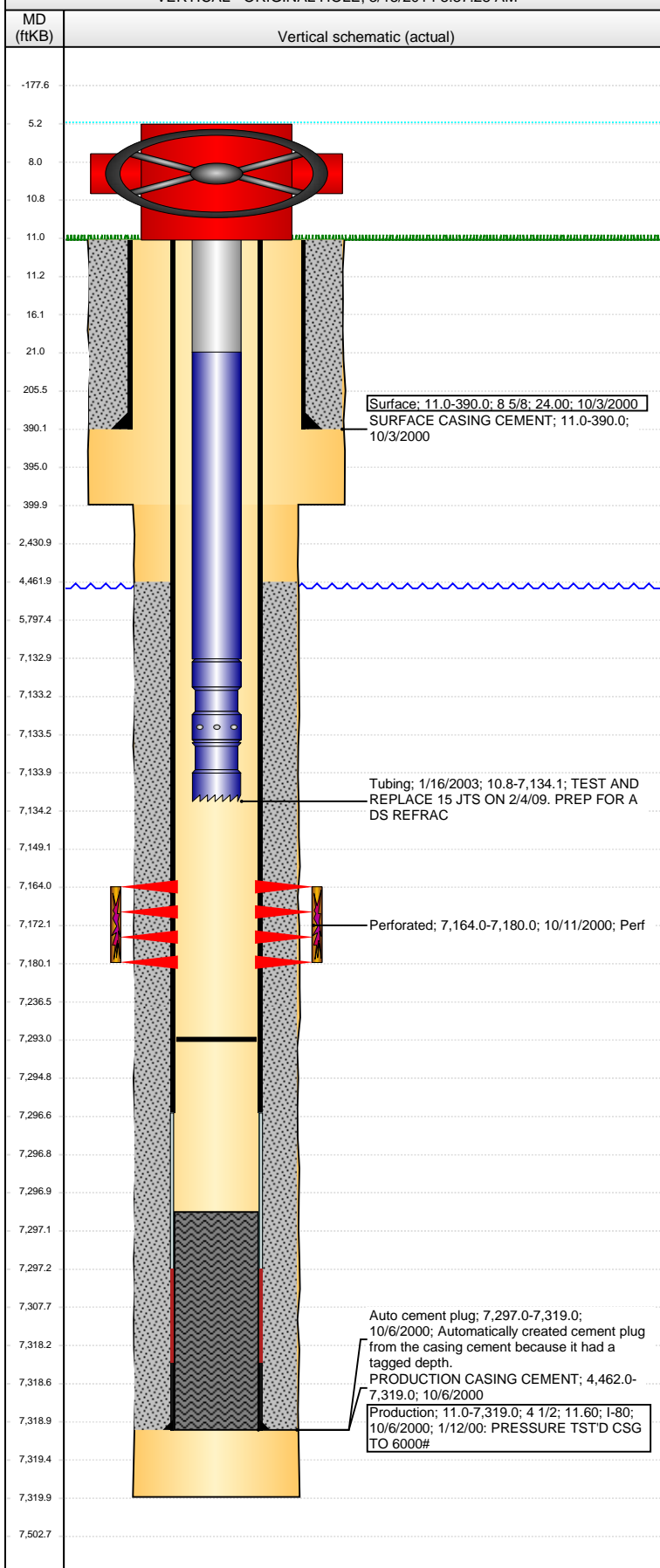


Well Name: DANIELS K05-14X

VERTICAL - ORIGINAL HOLE. 3/18/2014 8:37:28 AM



Well Header							
API 05-123-20058		Business Unit WATTENBERG		District 15		Well Config VERTICAL	
Original KB Elevation (ft) 4,710.00		KB - GL / MSL (ftKB) 11.00		Spud Date 10/2/2000		P & A Date	
Comment							
Directions To Well							
Congressional Location							
Quarter 1	Quarter 2	Quarter 3 SE	Quarter 4 SW	Section 5	Township 4 N	Twnshp N...	Range 66 W
Rng E/W Dir							
Bottom Hole Location							
North-South Distance (ft)		From N or S Line		East-West Distance (ft)		From E or W Line	
Plug Back Total Depths							
Date	Depth (ftKB)	Method			Com		
10/6/2000	7,297.0	CASING TALLY			TOP OF FLOAT COLLAR		
10/11/2000	7,293.0	CASED HOLE LOG			CBL DEPTH LOGGER		
Wellbore Sections							
Section Des		Size (in)		Act Top, MD (ftKB)		Act Btm, MD (ftKB)	
SURFACE		12 1/4		11.0		400.0	
PRODUCTION		7 7/8		400.0		7,320.0	
Zone Statuses							
Zone Name		Status Date		Status		Job	
CODELL		10/27/2000		PR		DRILLING/COMPLETION - ORIGINAL, 10/2/2000 00:00	
CODELL		3/4/2009		PR		RE-FRAC, 2/3/2009 10:30	
Casing Strings							
Surface, 390.0ftKB							
Casing Description		Run Date		OD (in)		Wt/Len (l...	
Surface		10/3/2000		8 5/8		24.00	
				Grade		Top, MD (ft...)	
				I-80		11.0	
						MD (ftKB)	
						390.0	
Production, 7,319.0ftKB							
Casing Description		Run Date		OD (in)		Wt/Len (l...	
Production		10/6/2000		4 1/2		11.60	
				Grade		Top, MD (ft...)	
				I-80		11.0	
						MD (ftKB)	
						7,319.0	
Cement							
Description				Top Depth (ftKB)		Bottom Depth (ftKB)	
SURFACE CASING CEMENT				11.0		390.0	
Description				Top Depth (ftKB)		Bottom Depth (ftKB)	
PRODUCTION CASING CEMENT				4,462.0		7,319.0	
Tubing Components							
Item Des		OD (in)	Wt (lb/ft)	Grade	Jts	Len (ft)	Btm (ftKB)
Tubing Pup Joint		2 3/8			1	10.00	20.9
Tubing		2 3/8	4.70	J-55	223	7,112.00	7,132.8
Seal Nipple		2 3/8			1	0.75	7,133.6
Notched collar		2 3/8			1	0.50	7,134.1
Btm (TVD) (ftKB)							
Perforation Data							
Zone		Bnch/St g	Entered Shot Total	Top (ftKB)		Btm (ftKB)	Date
CODELL, ORIGINAL HOLE			64	7,164.00		7,180.00	10/11/2000
Stimulations & Treatments							
Date		Zone			Primary Job Type		
10/25/2000		CODELL, ORIGINAL HOLE			DRILLING/COMPLETION - ORIGINAL		
Technical Result			Tech Result Details			Tech Result Note	
Comment							
Date		Zone			Primary Job Type		
2/26/2009		CODELL, ORIGINAL HOLE			RE-FRAC		
Technical Result			Tech Result Details			Tech Result Note	
Success			According to Plan				
Comment							
CONCURRENT CODELL RE-FRAC VIA DEADSTRING CONFIGURATION IN CONJUNCTION WITH THE SHABLE K 8-3. CIRCULATE THE HOLE WITH CLAYTREAT WATER. PRE- ISIP = 2771 PSI, 5-MIN= 1873 PSI. 2.0 PPG - 4.0 PPG SAND RAMP - 1:25 X-LINK TIME, DOWNHOLE VALVE ACCIDENTLY CLOSED CAUSING VISCOSITY DROP. STOPPED FRAC RE-GELLED AND DISPLACED FLUID IN PIPE WITH 28 BBLS OF LINEAR FLUID BEFORE RETURNING TO SAND. 4.0 PPG SAND - 1:35 X-LINK TIME, STARTED 4.0 PPG EARLY DUE TO WATER SHORTAGE. POST-ISIP = 3784 PSI, 5-MIN = 3403 PSI, NOLTE = 0.2							

Well Name: DANIELS K05-14X

VERTICAL - ORIGINAL HOLE, 3/18/2014 8:37:29 AM

Other In Hole

Run Date	Des	OD (in)	Top (ftKB)	Btm (ftKB)

Logs

Date	Type	Top, MD (ftKB)	Btm, MD (ftKB)
10/5/2000	DUAL INDUCTION	378.0	7,320.0
10/11/2000	CEMENT BOND	4,030.0	7,288.0
10/11/2000	COMPENSATED DENSITY	3,900.0	7,300.0

