



7136 South Yale Avenue, Suite 414
Tulsa, Oklahoma 74136-6378

phone 918.925.9739

fax 866.534.4559

WWW.HZMUD.COM/25

Customer Information

Operator: Noble Energy Inc
1625 Broadway
Suite 2200
Denver, Colorado 80202

Geologist: Holly Duncan
Noble Energy Inc.

Mud Logging Details

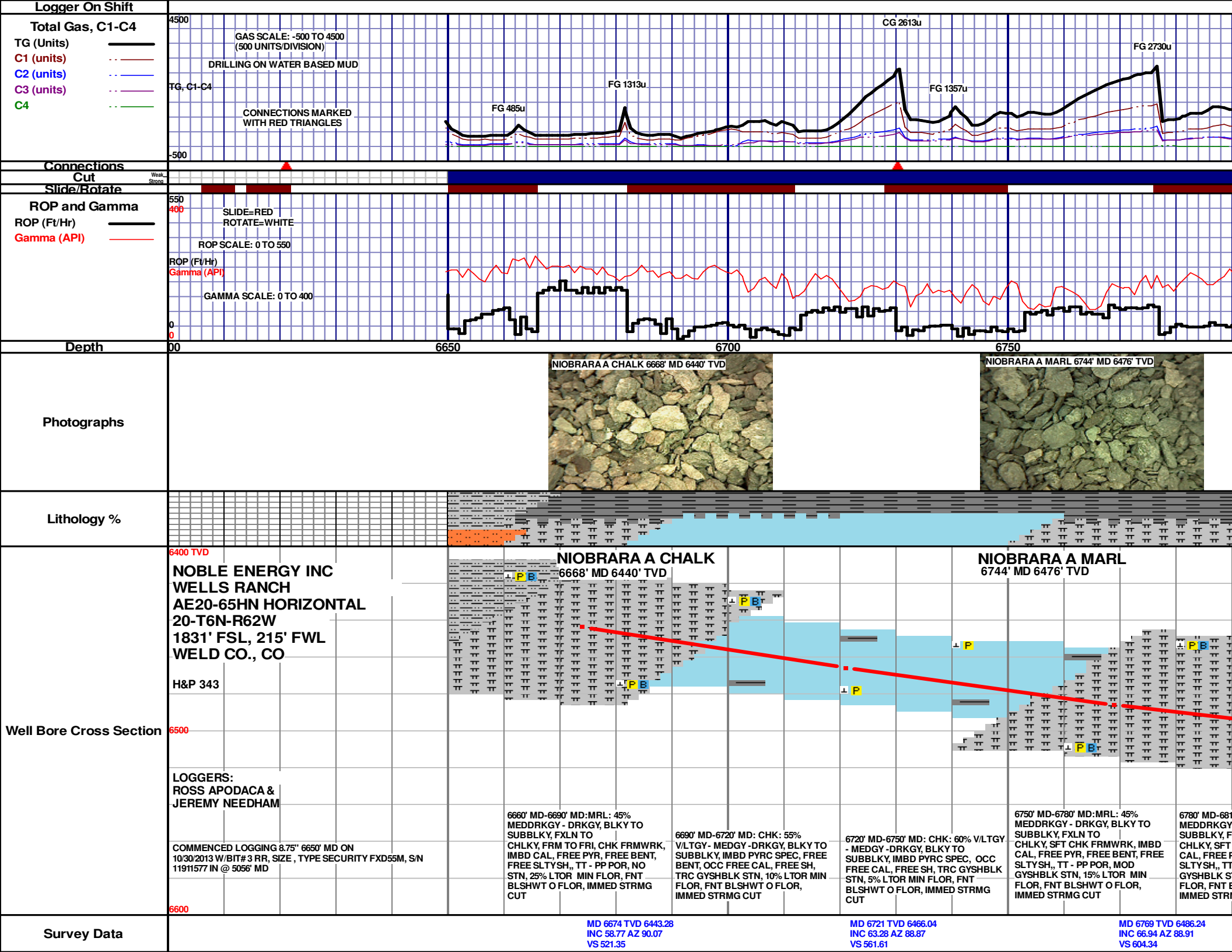
Logger: Ross Apodaca &
Jeremy Needham
Log Interval: 6650' MD TO 10826' MD
Start Date: October 30, 2013
Release Date: November 03, 2013

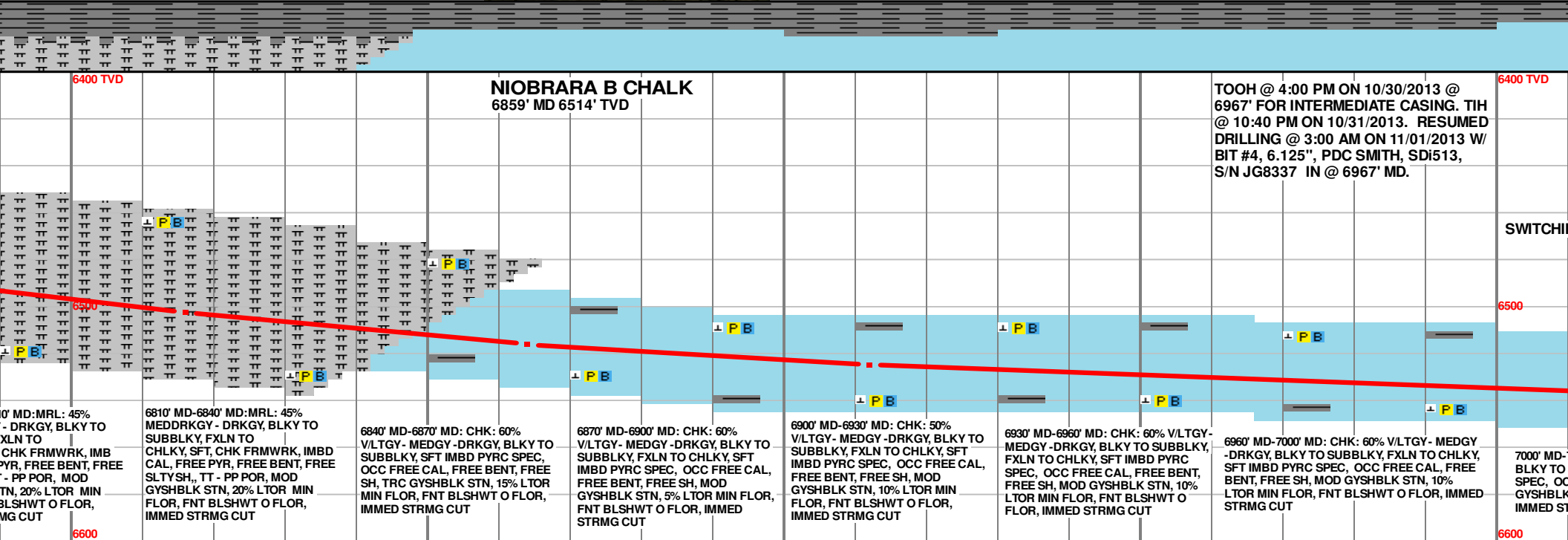
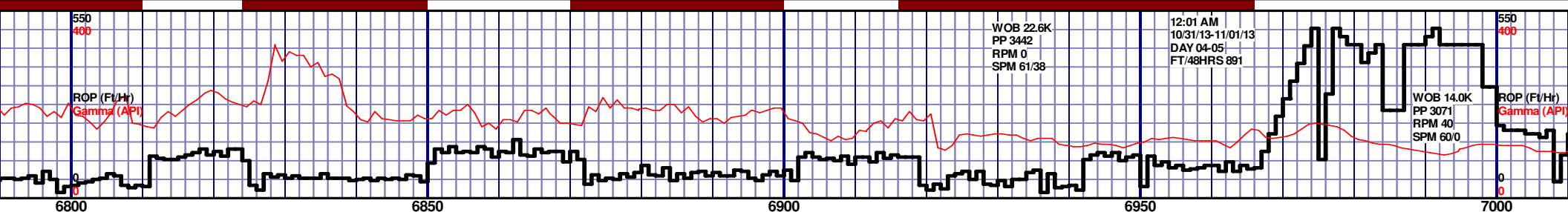
Well Information

Well Name: Wells Ranch AE20-65HN
Horizontal
Location: 20-T6N-R62W
1831' FSL, 215' FWL

County: Weld
State: Colorado

Drilling Rig: H&P 343
Total Depth: 10826' MD
TD Date: November 02, 2013
Formation: Niobrara B Chalk
KB Elevation: 4809'
GR Elevation: 4785'
API Number: 05-123-37218-0000

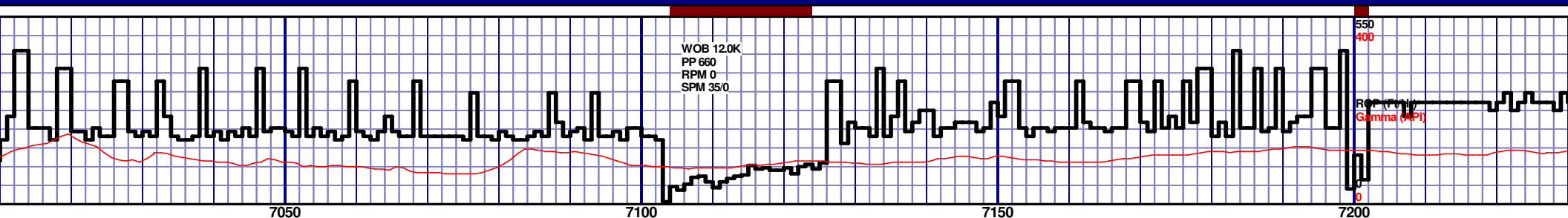
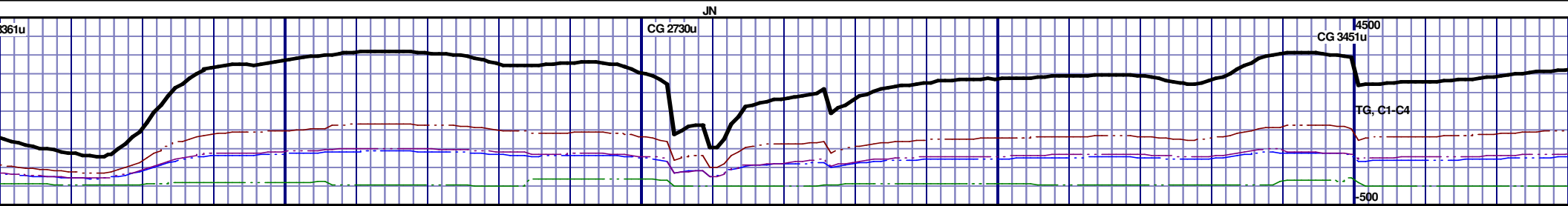




MD 6816 TVD 6502.72
INC 72.01 AZ 90.64
VS 647.39

MD 6864 TVD 6515.77
INC 76.41 AZ 90.7
VS 692.41

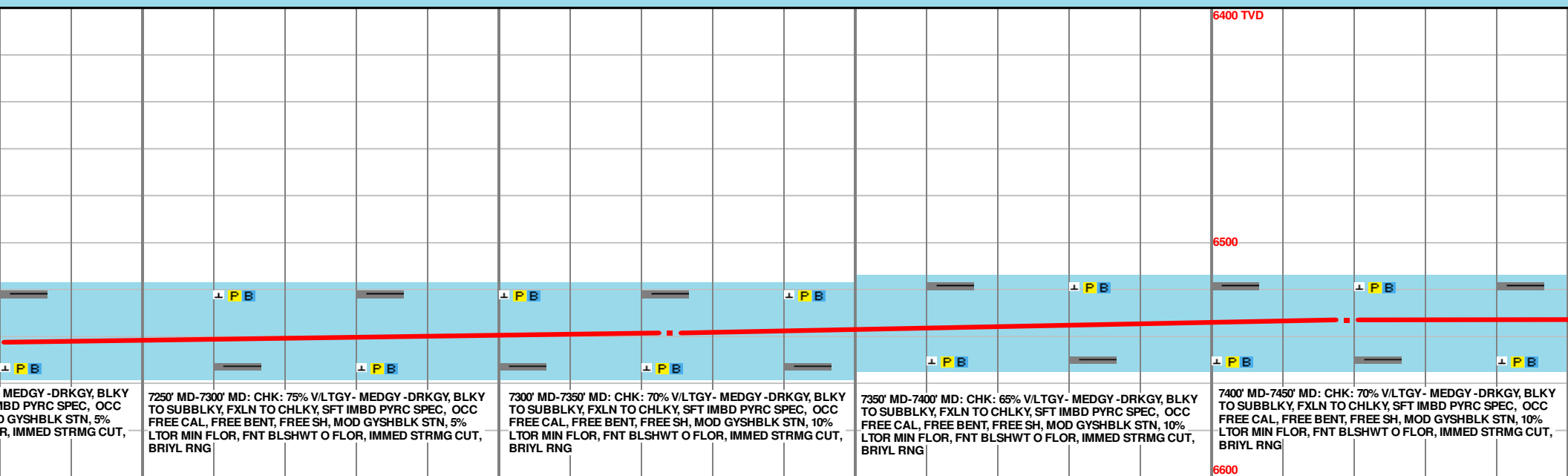
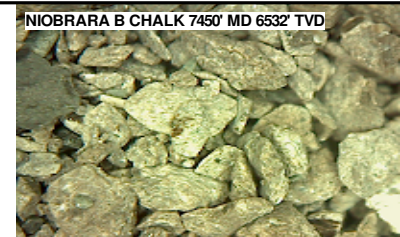
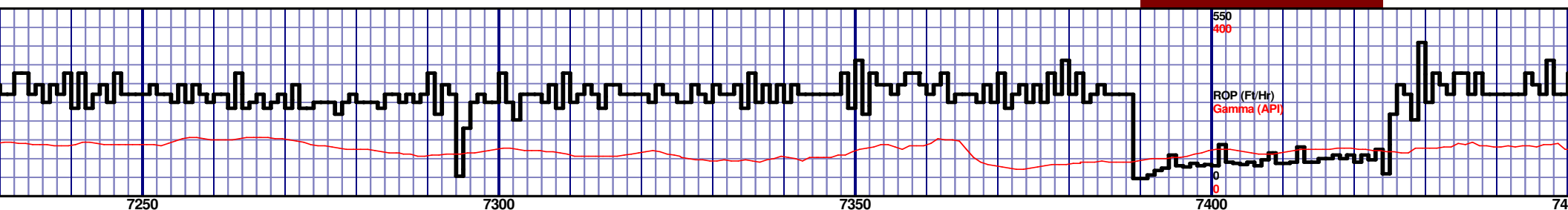
MD 6912 TVD 6524.87
INC 81.75 AZ 89.58
VS 738.44



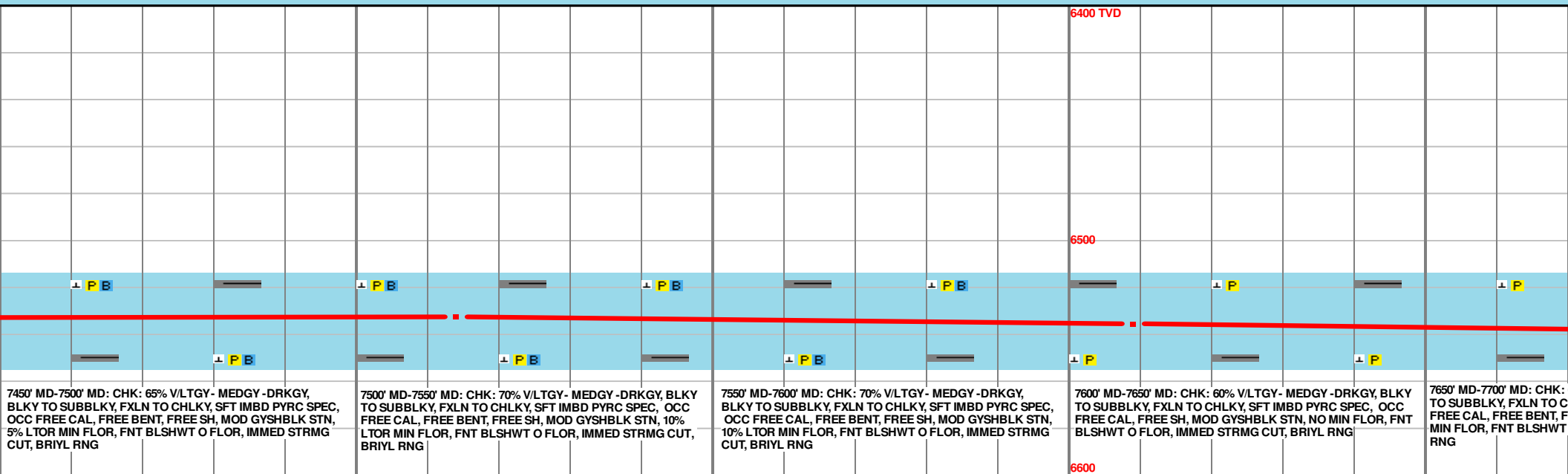
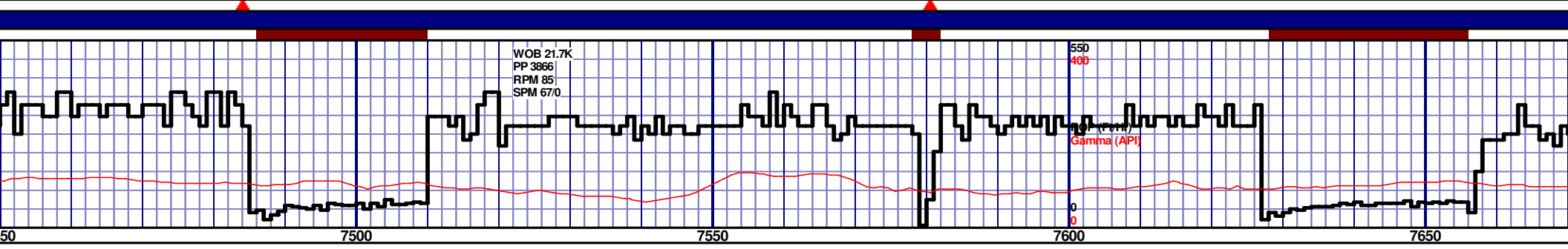
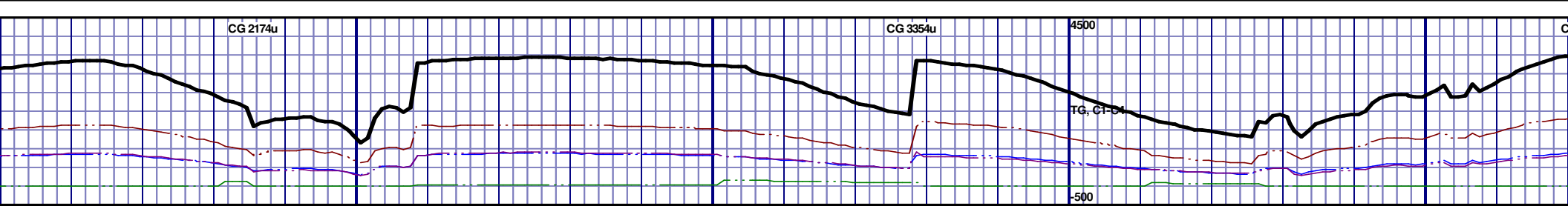
NG TO 50FT SAMPLE INTERVALS				6400 TVD			
				6500			
7050' MD-7100' MD: CHK: 70% V/LTGY - MEDGY - DRKGY, BLKY TO SUBBLKY, FXLN TO CHLKY, SFT IMBD PYRC SPEC, OCC FREE CAL, FREE BENT, FREE SH, MOD GYSHBLK STN, 10% LTOR MIN FLOR, FNT BLSHWT O FLOR, IMMED STRMG CUT, BRIYL RNG				6600			
7100' MD-7150' MD: CHK: 60% V/LTGY - MEDGY - DRKGY, BLKY TO SUBBLKY, FXLN TO CHLKY, SFT IMBD PYRC SPEC, OCC FREE CAL, FREE BENT, FREE SH, MOD GYSHBLK STN, 10% LTOR MIN FLOR, FNT BLSHWT O FLOR, IMMED STRMG CUT, BRIYL RNG							
7150' MD-7200' MD: CHK: 70% V/LTGY - MEDGY - DRKGY, BLKY TO SUBBLKY, FXLN TO CHLKY, SFT IMBD PYRC SPEC, OCC FREE CAL, FREE BENT, FREE SH, MOD GYSHBLK STN, 5% LTOR MIN FLOR, FNT BLSHWT O FLOR, IMMED STRMG CUT, BRIYL RNG							
7200' MD-7250' MD: CHK: 75% V/LTGY - MEDGY - DRKGY, BLKY TO SUBBLKY, FXLN TO CHLKY, SFT IMBD PYRC SPEC, OCC FREE CAL, FREE BENT, FREE SH, MOD GYSHBLK STN, 10% LTOR MIN FLOR, FNT BLSHWT O FLOR, IMMED STRMG CUT, BRIYL RNG							

MD 7039 TVD 6538.87
INC 85.59 AZ 87.32
VS 862.48

MD 7134 TVD 6543.13
INC 89.26 AZ 88.1
VS 955.96

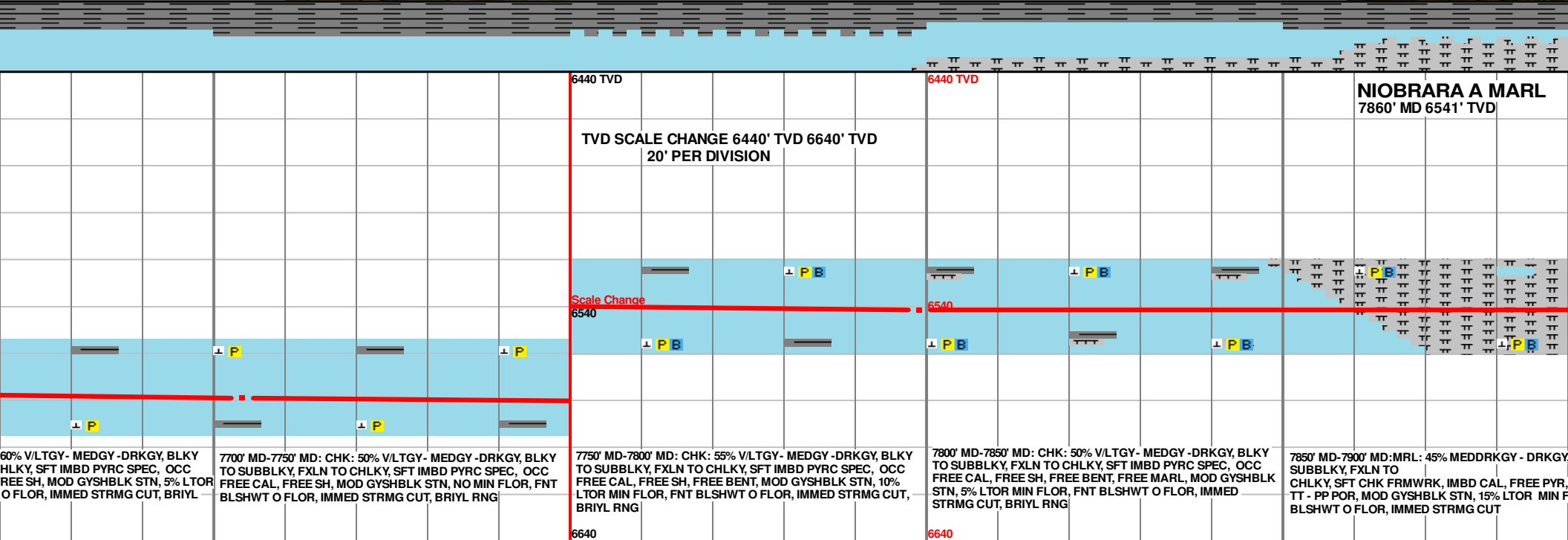
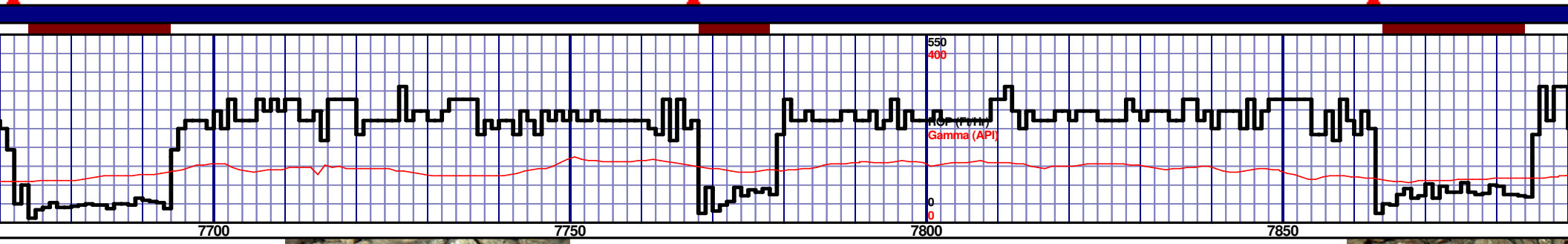
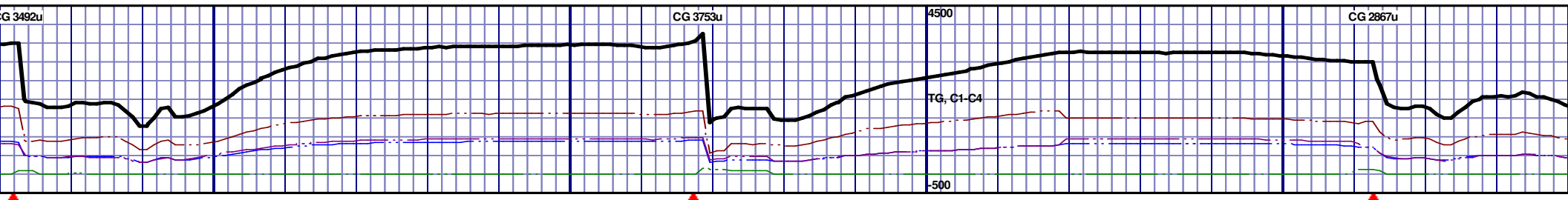


MD 7419 TVD 6533.06
INC 92.72 AZ 86.65
VS 1236.46



MD 7514 TVD 6532.59
INC 87.84 AZ 82.5
VS 1330.76

MD 7609 TVD 6535.28
INC 88.92 AZ 81.43
VS 1425.47



60% V/LTGY - MEDGY - DRKGY, BLKY
HLKY, SFT IMBD PYRC SPEC, OCC
FREE SH, MOD GYSHBLK STN, 5% LTOR
O FLOR, IMMED STRMG CUT, BRIYL

7700' MD-7750' MD: CHK: 50% V/LTGY - MEDGY - DRKGY, BLKY
TO SUBBLKY, FXLN TO CHLKY, SFT IMBD PYRC SPEC, OCC
FREE CAL, FREE SH, MOD GYSHBLK STN, NO MIN FLOR, FNT
BLSHWT O FLOR, IMMED STRMG CUT, BRIYL RNG

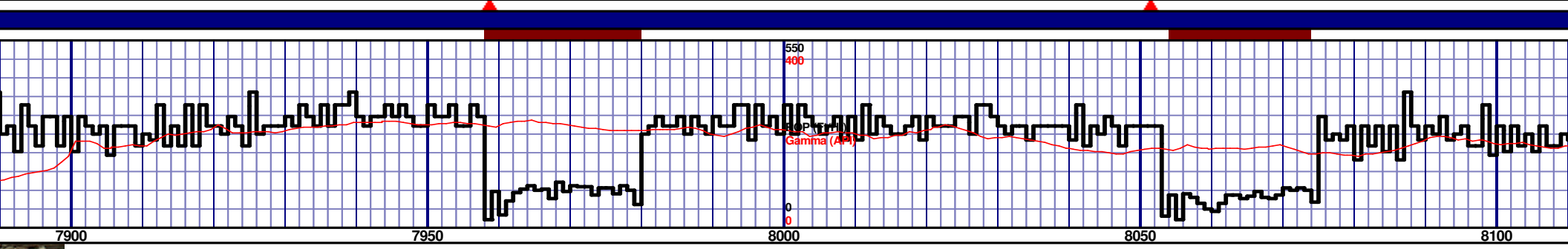
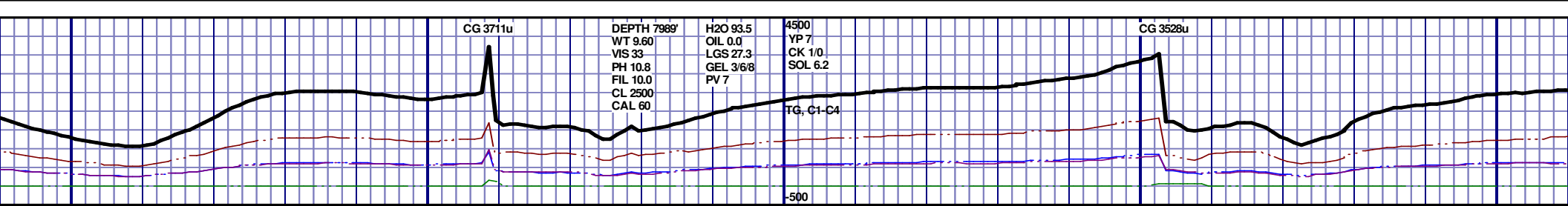
7750' MD-7800' MD: CHK: 55% V/LTGY - MEDGY - DRKGY, BLKY
TO SUBBLKY, FXLN TO CHLKY, SFT IMBD PYRC SPEC, OCC
FREE CAL, FREE SH, FREE BENT, MOD GYSHBLK STN, 10%
LTOR MIN FLOR, FNT BLSHWT O FLOR, IMMED STRMG CUT,
BRIYL RNG

7800' MD-7850' MD: CHK: 50% V/LTGY - MEDGY - DRKGY, BLKY
TO SUBBLKY, FXLN TO CHLKY, SFT IMBD PYRC SPEC, OCC
FREE CAL, FREE SH, FREE BENT, FREE MARL, MOD GYSHBLK
STN, 5% LTOR MIN FLOR, FNT BLSHWT O FLOR, IMMED
STRMG CUT, BRIYL RNG

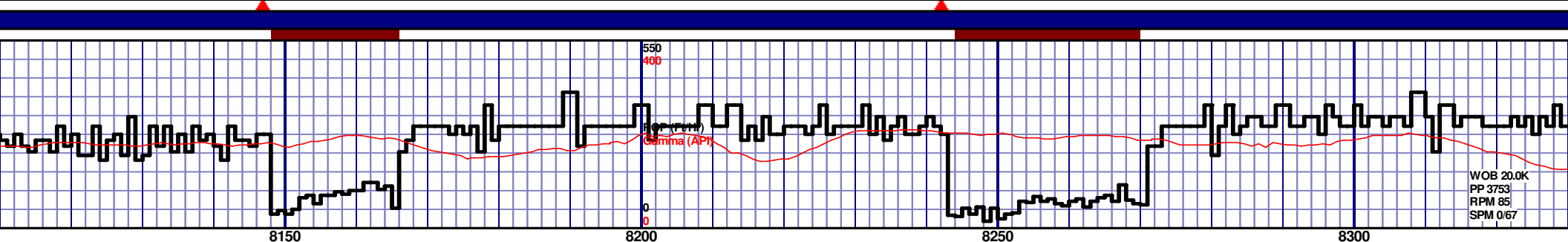
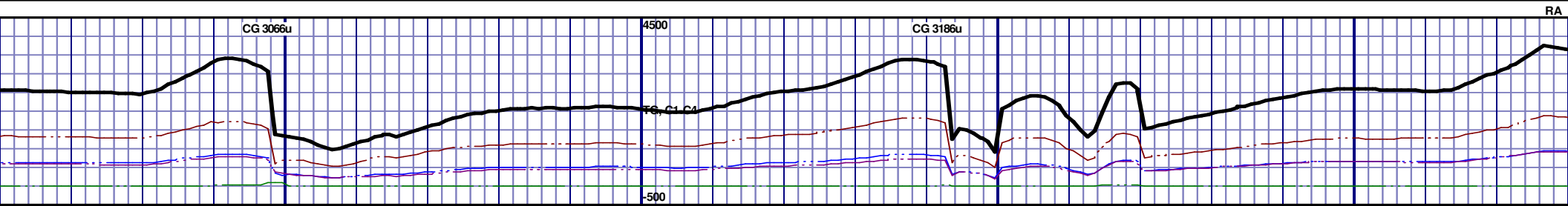
7850' MD-7900' MD: MRL: 45% MEDDRKGY - DRKGY
SUBBLKY, FXLN TO
CHLKY, SFT CHK FRMWRK, IMBD CAL, FREE PYR,
TT - PP POR, MOD GYSHBLK STN, 15% LTOR MIN FLOR,
BLSHWT O FLOR, IMMED STRMG CUT

MD 7704 TVD 6538.75
INC 86.89 AZ 86.77
VS 1519.8

MD 7799 TVD 6541.74
INC 89.51 AZ 86.43
VS 1613.64



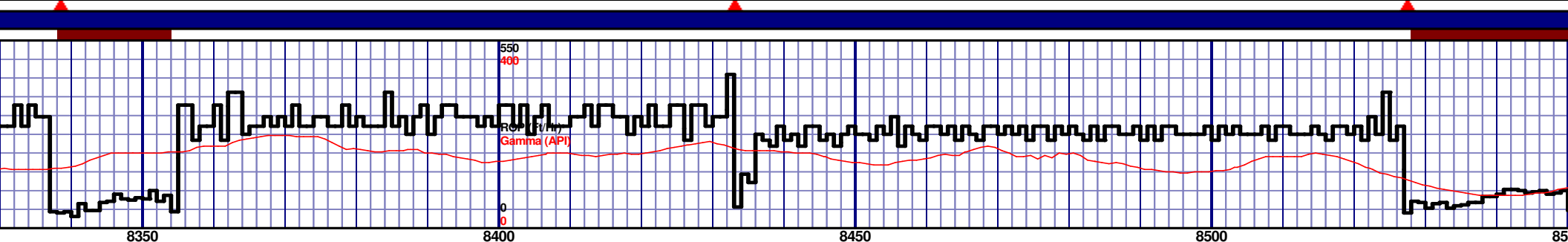
6440 TVD					
BLKY TO	7900' MD-7950' MD:MRL: 45% MEDDRKGY - DRKGY, BLKY TO	7950' MD-8000' MD:MRL: 40% MEDDRKGY - DRKGY, BLKY TO	8000' MD-8050' MD:MRL: 45% MEDDRKGY - DRKGY, BLKY TO	8050' MD-8100' MD:MRL: 45% MEDDRKGY - DRKGY, BLKY TO	8100' MD-8150' MD:MRL: 45% MEDDRKGY - DRKGY, BLKY TO
FREE BENT,	SUBBLKY, FXLN TO	SUBBLKY, FXLN TO	SUBBLKY, FXLN TO	SUBBLKY, FXLN TO	SUBBLKY, FXLN TO
FLO, FNT	CHLKY, SFT CHK FRMWRK, IMBD CAL, FREE PYR, FREE	CHLKY, SFT CHK FRMWRK, IMBD CAL, FREE PYR, FREE BENT,	CHLKY, SFT CHK FRMWRK, IMBD CAL, FREE PYR, FREE BENT,	CHLKY, SFT CHK FRMWRK, IMBD CAL, FREE PYR, FREE	CHLKY, SFT CHK FRMWRK, IMBD CAL, FREE PYR, FREE
	BENT, FREE CHALK, TT - PP POR, MOD GYSHBLK STN, 15%	TT - PP POR, MOD GYSHBLK STN, 10% LTOR MIN FLOR, FNT	TT - PP POR, MOD GYSHBLK STN, 5% LTOR MIN FLOR, FNT	BENT, TT - PP POR, MOD GYSHBLK STN, 5% LTOR MIN FLOR,	BENT, TT - PP POR, MOD GYSHBLK STN, 5% LTOR MIN FLOR,
	LTOR MIN FLOR, FNT BLSHWT O FLOR, IMMED STRMG CUT	BLSHWT O FLOR, IMMED STRMG CUT	BLSHWT O FLOR, IMMED STRMG CUT	FNT BLSHWT O FLOR, IMMED STRMG CUT	FNT BLSHWT O FLOR, IMMED STRMG CUT



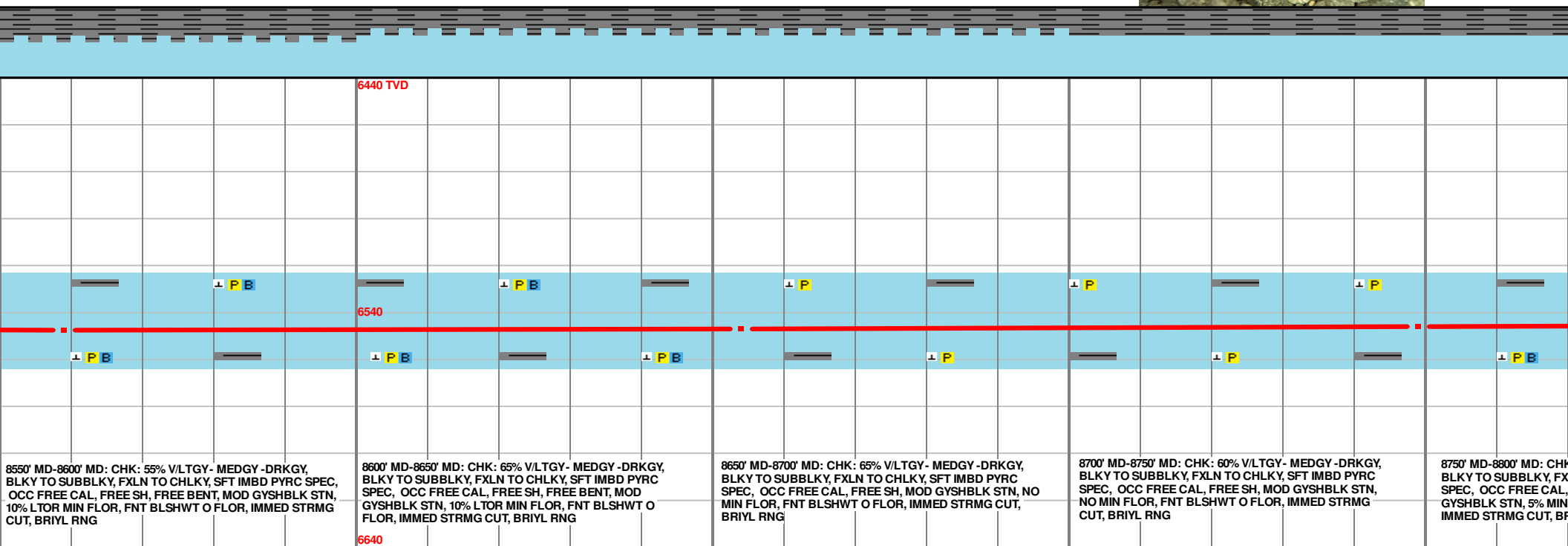
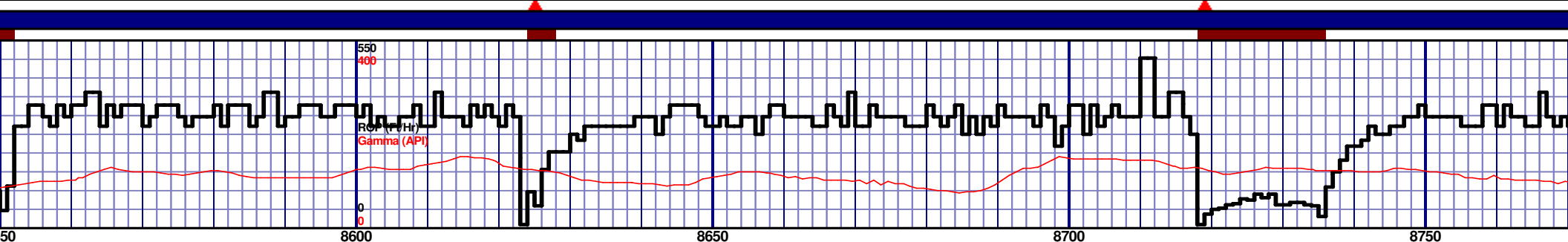
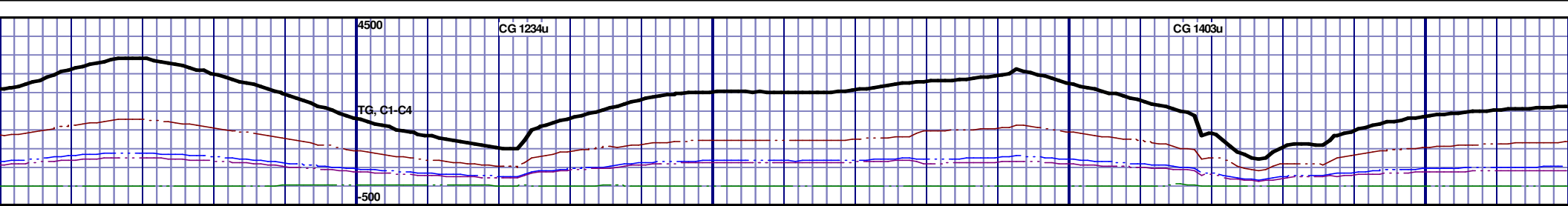
50' MD: MRL: 45% MEDDRKGY - DRKGY, BLKY TO FXLN TO CHLKY, SFT CHK FRMWRK, IMBD CAL, FREE PYR, FREE BENT, TT - PP POR, MOD GYSHBLK STN, 10% LTOR MIN FLOR, FNT BLSHWT O FLOR, IMMED STRMG CUT					8150' MD-8200' MD: MRL: 50% MEDDRKGY - DRKGY, BLKY TO SUBBLKY, FXLN TO CHLKY, SFT CHK FRMWRK, IMBD CAL, FREE PYR, FREE BENT, TT - PP POR, MOD GYSHBLK STN, 10% LTOR MIN FLOR, FNT BLSHWT O FLOR, IMMED STRMG CUT					8200' MD-8250' MD: MRL: 45% MEDDRKGY - DRKGY, BLKY TO SUBBLKY, FXLN TO CHLKY, SFT CHK FRMWRK, IMBD CAL, FREE PYR, FREE BENT, TT - PP POR, MOD GYSHBLK STN, 5% LTOR MIN FLOR, FNT BLSHWT O FLOR, IMMED STRMG CUT					8250' MD-8300' MD: MRL: 45% MEDDRKGY - DRKGY, BLKY TO SUBBLKY, FXLN TO CHLKY, SFT CHK FRMWRK, IMBD CAL, FREE PYR, FREE BENT, TT - PP POR, MOD GYSHBLK STN, 5% LTOR MIN FLOR, FNT BLSHWT O FLOR, IMMED STRMG CUT					8300' MD-8350' MD: MRL: 45% MEDDRKGY - DRKGY, BLKY TO SUBBLKY, FXLN TO CHLKY, SFT CHK FRMWRK, IMBD CAL, FREE PYR, FREE BENT, TT - PP POR, MOD GYSHBLK STN, 5% LTOR MIN FLOR, FNT BLSHWT O FLOR, IMMED STRMG CUT				
--	--	--	--	--	--	--	--	--	--	---	--	--	--	--	---	--	--	--	--	---	--	--	--	--

MD 8179 TVD 6540.13
INC 88.49 AZ 88.12
VS 1987.29

MD 8274 TVD 6542.25
INC 88.95 AZ 89.64
VS 2080.51



	USA	
MD 8369 TVD 6544.32 INC 88.55 AZ 90.86 VS 2173.26		MD 8464 TVD 6546.26 INC 89.11 AZ 89.99 VS 2265.96

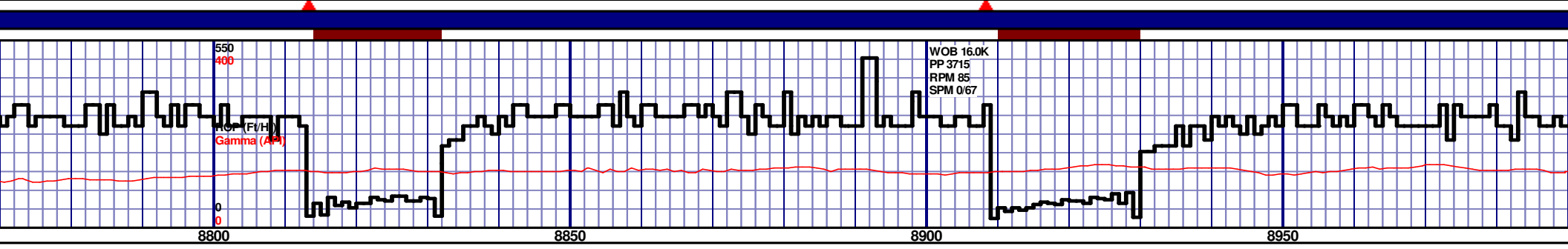
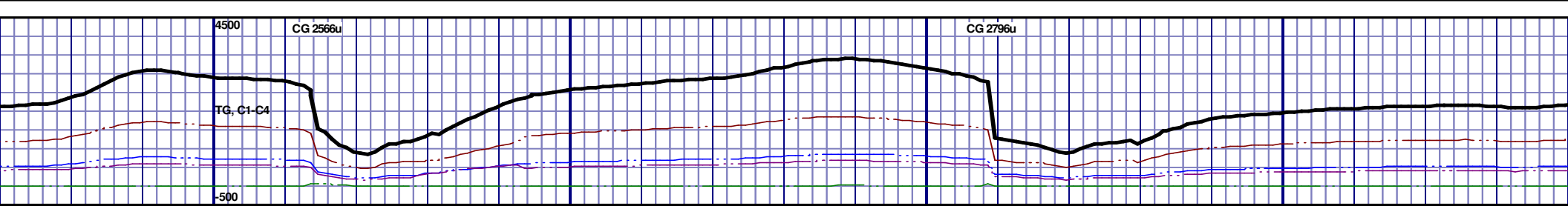


<p>8550' MD-8600' MD: CHK: 55% V/LTGY- MEDGY -DRKGY, BLKY TO SUBBLKY, FXLN TO CHLKY, SFT IMBD PYRC SPEC, OCC FREE CAL, FREE SH, FREE BENT, MOD GYSHBLK STN, 10% LTOR MIN FLOR, FNT BLSHWT O FLOR, IMMED STRMG CUT, BRIYL RNG</p>	<p>8600' MD-8650' MD: CHK: 65% V/LTGY- MEDGY -DRKGY, BLKY TO SUBBLKY, FXLN TO CHLKY, SFT IMBD PYRC SPEC, OCC FREE CAL, FREE SH, FREE BENT, MOD GYSHBLK STN, 10% LTOR MIN FLOR, FNT BLSHWT O FLOR, IMMED STRMG CUT, BRIYL RNG</p>	<p>8650' MD-8700' MD: CHK: 65% V/LTGY- MEDGY -DRKGY, BLKY TO SUBBLKY, FXLN TO CHLKY, SFT IMBD PYRC SPEC, OCC FREE CAL, FREE SH, MOD GYSHBLK STN, NO MIN FLOR, FNT BLSHWT O FLOR, IMMED STRMG CUT, BRIYL RNG</p>	<p>8700' MD-8750' MD: CHK: 60% V/LTGY- MEDGY -DRKGY, BLKY TO SUBBLKY, FXLN TO CHLKY, SFT IMBD PYRC SPEC, OCC FREE CAL, FREE SH, MOD GYSHBLK STN, NO MIN FLOR, FNT BLSHWT O FLOR, IMMED STRMG CUT, BRIYL RNG</p>	<p>8750' MD-8800' MD: CHK: 60% V/LTGY- MEDGY -DRKGY, BLKY TO SUBBLKY, FXLN TO CHLKY, SFT IMBD PYRC SPEC, OCC FREE CAL, FREE SH, MOD GYSHBLK STN, 5% MIN FLOR, FNT BLSHWT O FLOR, IMMED STRMG CUT, BRIYL RNG</p>
--	--	---	---	---

MD 8559 TVD 6547.36
INC 89.57 AZ 90.49
VS 2358.74

MD 8654 TVD 6547.08
INC 90.77 AZ 89.59
VS 2451.59

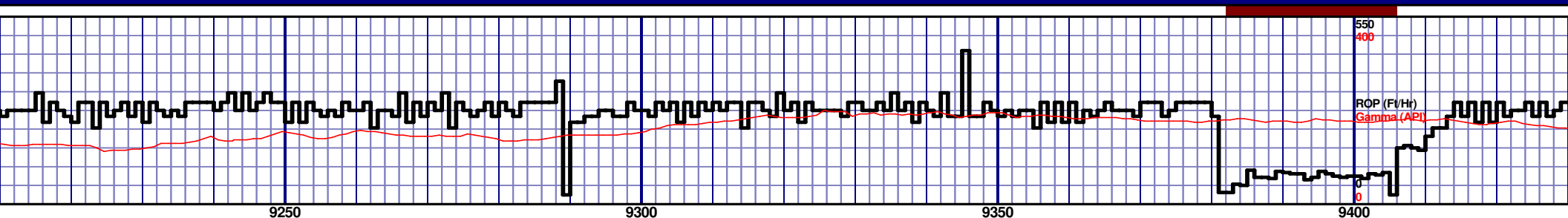
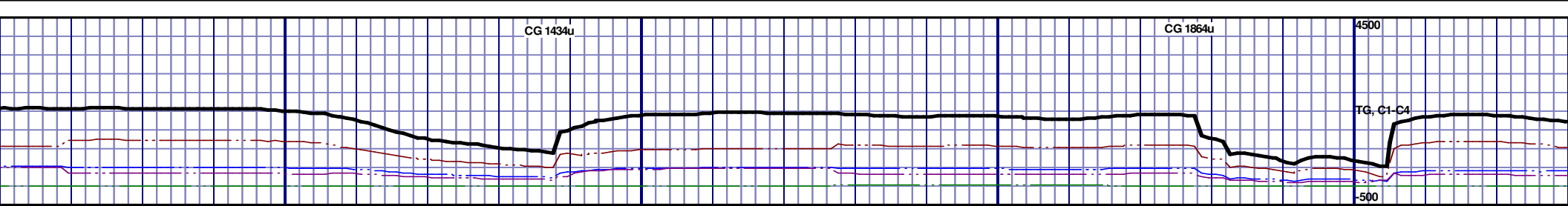
MD 8749 TVD 6545.97
INC 90.56 AZ 89.66
VS 2544.58



<p>6440 TVD</p>	<p>6540</p>			
<p>CHK: 60% V/LTGY - MEDGY - DRKGY, BLKY TO CHLKY, SFT IMBD PYRC SPEC, OCC FREE CAL, FREE SH, FREE BENT, MOD FLOR, FNT BLSHWT O FLOR, IMMED STRMG CUT, BRIYL RNG</p>	<p>8800' MD-8850' MD: CHK: 70% V/LTGY - MEDGY - DRKGY, BLKY TO SUBBLKY, FXLN TO CHLKY, SFT IMBD PYRC SPEC, OCC FREE CAL, FREE SH, FREE BENT, MOD GYSHBLK STN, 10% MIN FLOR, FNT BLSHWT O FLOR, IMMED STRMG CUT, BRIYL RNG</p>	<p>8850' MD-8900' MD: CHK: 75% V/LTGY - MEDGY - DRKGY, BLKY TO SUBBLKY, FXLN TO CHLKY, SFT IMBD PYRC SPEC, OCC FREE CAL, FREE SH, FREE BENT, MOD GYSHBLK STN, 10% MIN FLOR, FNT BLSHWT O FLOR, IMMED STRMG CUT, BRIYL RNG</p>	<p>8900' MD-8950' MD: CHK: 70% V/LTGY - MEDGY - DRKGY, BLKY TO SUBBLKY, FXLN TO CHLKY, SFT IMBD PYRC SPEC, OCC FREE CAL, FREE SH, FREE BENT, MOD GYSHBLK STN, 5% LTOR MIN FLOR, FNT BLSHWT O FLOR, IMMED STRMG CUT, BRIYL RNG</p>	<p>8950' MD-9000' MD: CHK: 65% V/LTGY - MEDGY - DRKGY, BLKY TO SUBBLKY, FXLN TO CHLKY, SFT IMBD PYRC SPEC, OCC FREE CAL, FREE SH, FREE BENT, MOD GYSHBLK STN, 5% LTOR MIN FLOR, FNT BLSHWT O FLOR, IMMED STRMG CUT, BRIYL RNG</p>

MD 8843 TVD 6544.81
INC 90.86 AZ 90.54
VS 2636.43

MD 8938 TVD 6544.59
INC 89.41 AZ 89.69
VS 2729.25



6440 TVD									
6640									

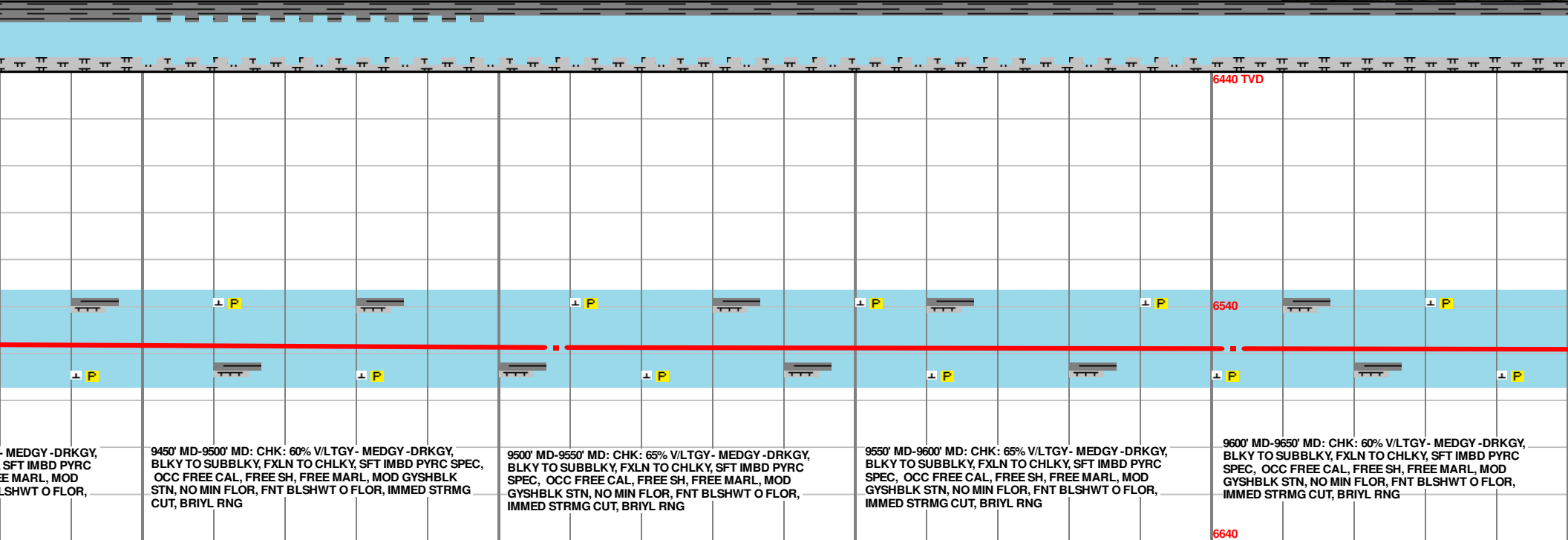
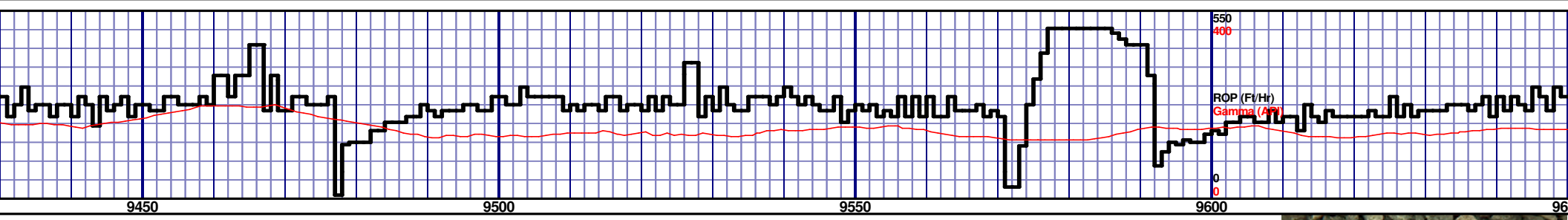
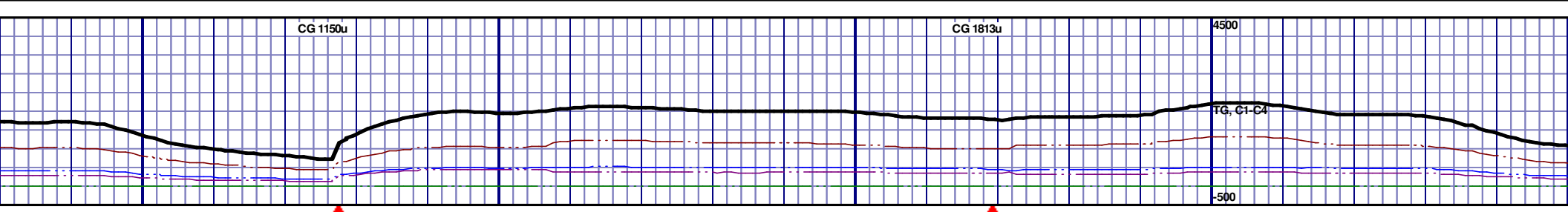
50' MD: CHK: 55% V/LTGY- MEDGY-DRKGY, BLKY TO SUBBLKY, FXLN TO CHLKY, SFT IMBD PYRC SPEC, OCC FREE CAL, FREE SH, FREE MARL, MOD GYSHBLK STN, NO MIN FLOR, FNT BLSHWT O FLOR, IMMED STRMG CUT, BRIYL RNG

9250' MD-9300' MD: CHK: 60% V/LTGY- MEDGY-DRKGY, BLKY TO SUBBLKY, FXLN TO CHLKY, SFT IMBD PYRC SPEC, OCC FREE CAL, FREE SH, FREE MARL, MOD GYSHBLK STN, NO MIN FLOR, FNT BLSHWT O FLOR, IMMED STRMG CUT, BRIYL RNG

9300' MD-9350' MD: CHK: 60% V/LTGY- MEDGY-DRKGY, BLKY TO SUBBLKY, FXLN TO CHLKY, SFT IMBD PYRC SPEC, OCC FREE CAL, FREE SH, FREE MARL, MOD GYSHBLK STN, NO MIN FLOR, FNT BLSHWT O FLOR, IMMED STRMG CUT, BRIYL RNG

9350' MD-9400' MD: CHK: 50% V/LTGY- MEDGY-DRKGY, BLKY TO SUBBLKY, FXLN TO CHLKY, SFT IMBD PYRC SPEC, OCC FREE CAL, FREE SH, FREE MARL, MOD GYSHBLK STN, NO MIN FLOR, FNT BLSHWT O FLOR, IMMED STRMG CUT, BRIYL RNG

9400' MD-9450' MD: CHK: 50% V/LTGY- MEDGY-DRKGY, BLKY TO SUBBLKY, FXLN TO CHLKY, SFT IMBD PYRC SPEC, OCC FREE CAL, FREE SH, FREE MARL, MOD GYSHBLK STN, NO MIN FLOR, FNT BLSHWT O FLOR, IMMED STRMG CUT, BRIYL RNG



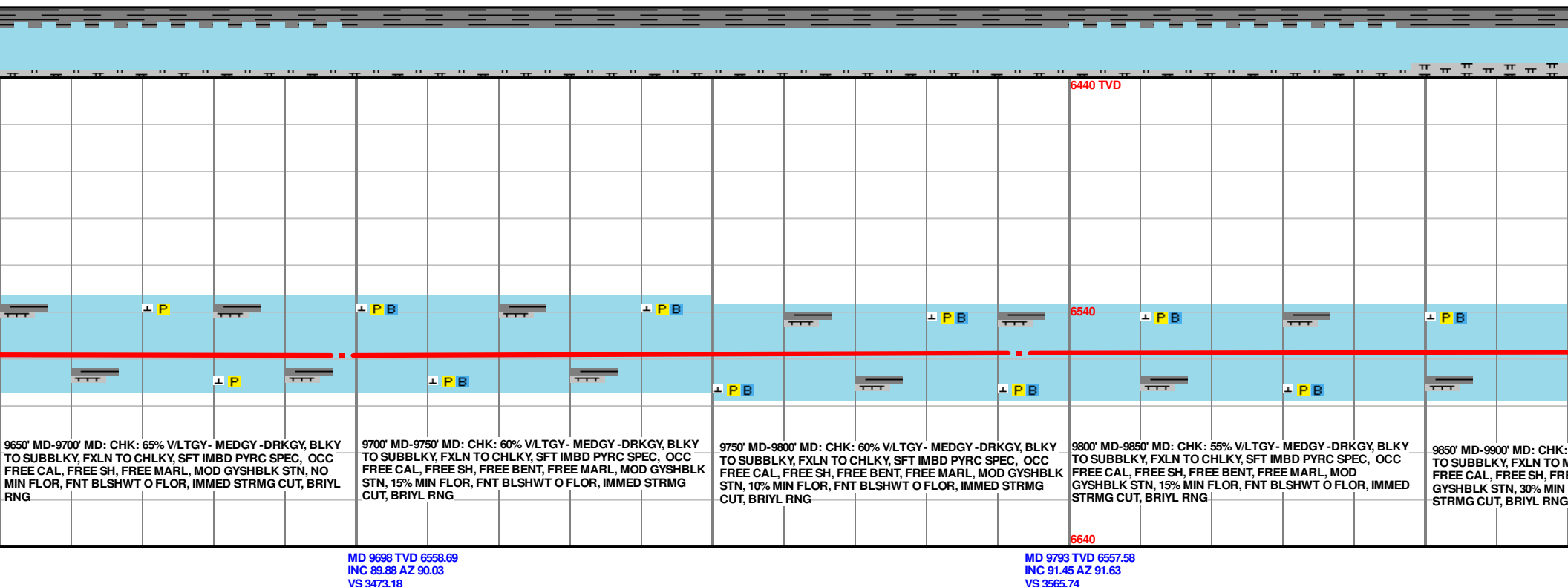
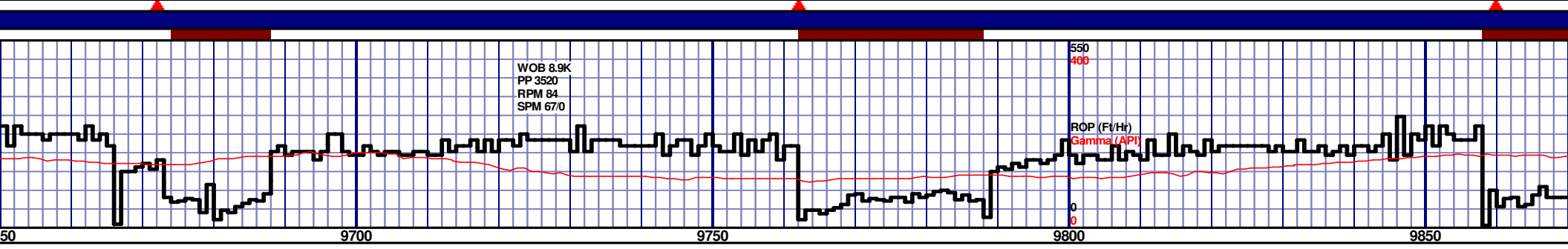
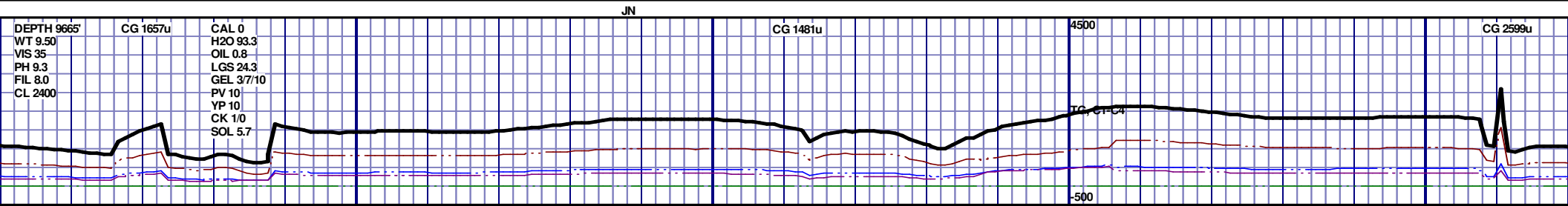
MEDGY-DRKGY, SFT IMBD PYRC
E MARL, MOD
LSHWT O FLOR,

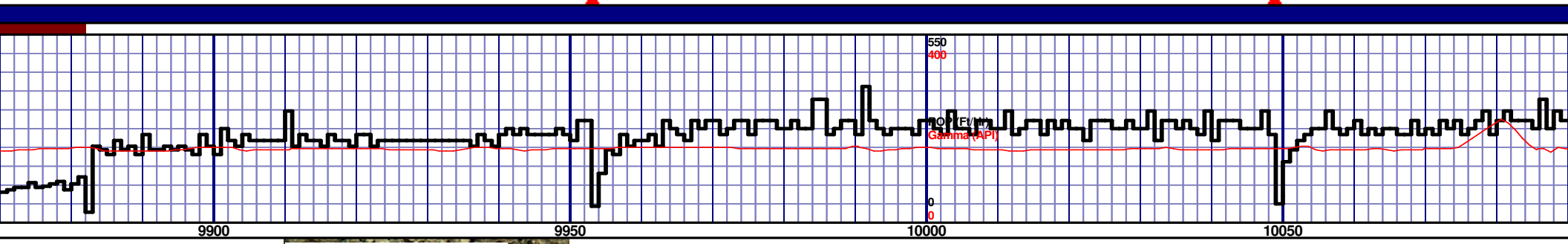
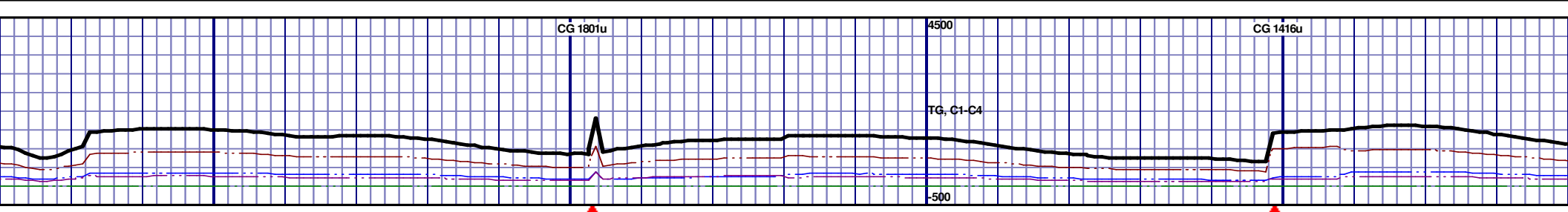
9450' MD-9500' MD: CHK: 60% V/LTGY- MEDGY-DRKGY,
BLKY TO SUBBLKY, FXLN TO CHLKY, SFT IMBD PYRC SPEC,
OCC FREE CAL, FREE SH, FREE MARL, MOD GYSHBLK
STN, NO MIN FLOR, FNT BLSHWT O FLOR, IMMED STRMG
CUT, BRIYL RNG

9500' MD-9550' MD: CHK: 65% V/LTGY- MEDGY-DRKGY,
BLKY TO SUBBLKY, FXLN TO CHLKY, SFT IMBD PYRC
SPEC, OCC FREE CAL, FREE SH, FREE MARL, MOD
GYSHBLK STN, NO MIN FLOR, FNT BLSHWT O FLOR,
IMMED STRMG CUT, BRIYL RNG

9550' MD-9600' MD: CHK: 65% V/LTGY- MEDGY-DRKGY,
BLKY TO SUBBLKY, FXLN TO CHLKY, SFT IMBD PYRC
SPEC, OCC FREE CAL, FREE SH, FREE MARL, MOD
GYSHBLK STN, NO MIN FLOR, FNT BLSHWT O FLOR,
IMMED STRMG CUT, BRIYL RNG

9600' MD-9650' MD: CHK: 60% V/LTGY- MEDGY-DRKGY,
BLKY TO SUBBLKY, FXLN TO CHLKY, SFT IMBD PYRC
SPEC, OCC FREE CAL, FREE SH, FREE MARL, MOD
GYSHBLK STN, NO MIN FLOR, FNT BLSHWT O FLOR,
IMMED STRMG CUT, BRIYL RNG



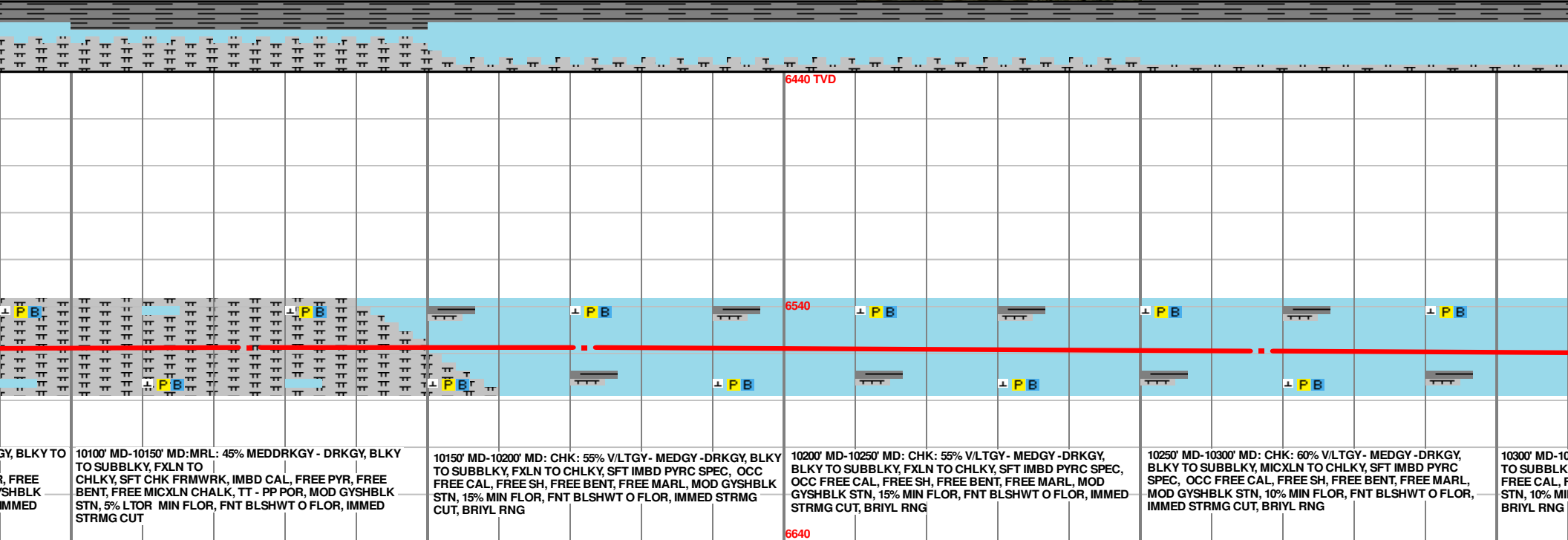
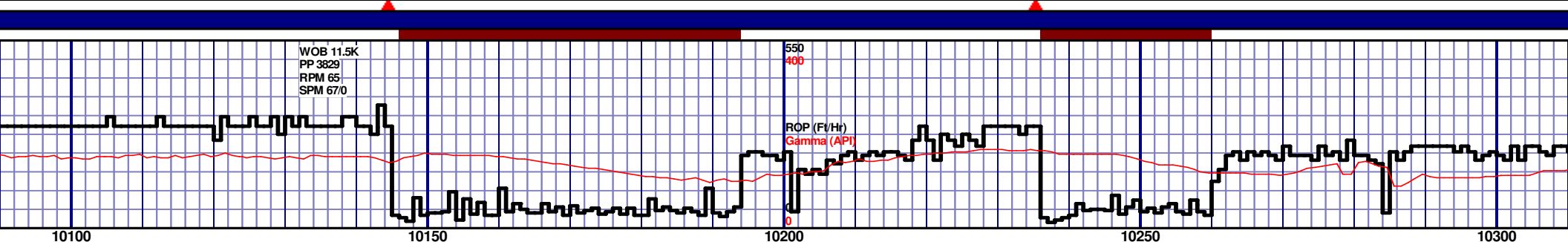


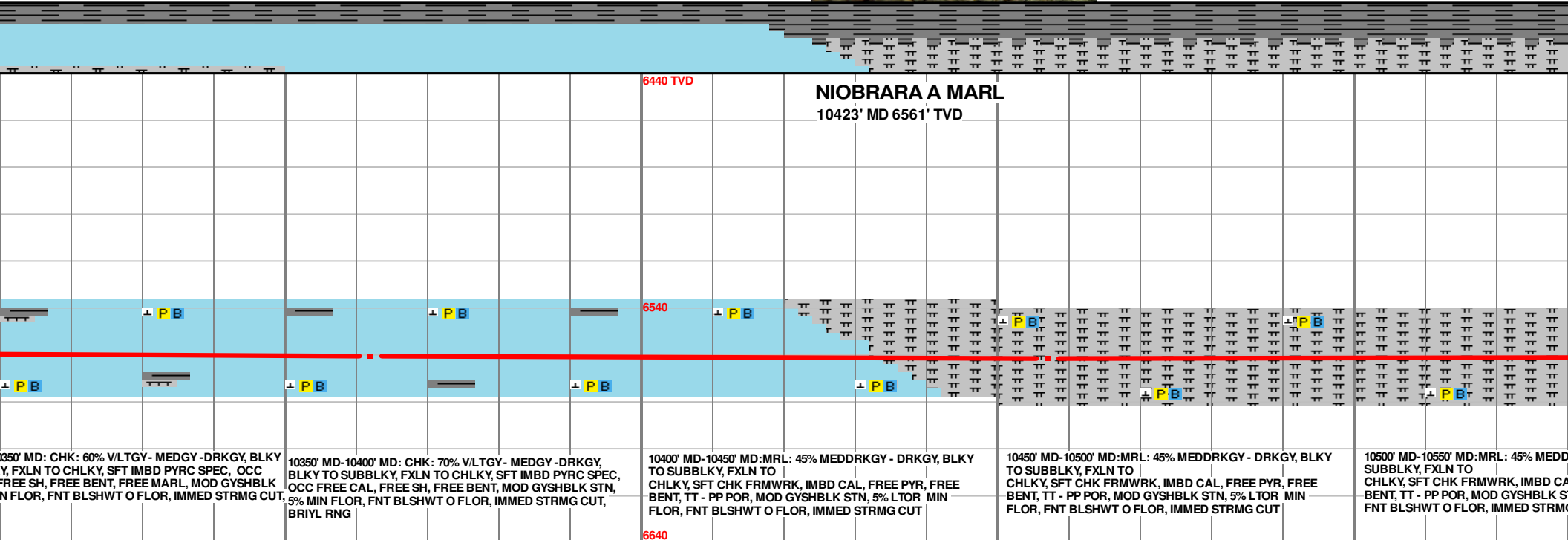
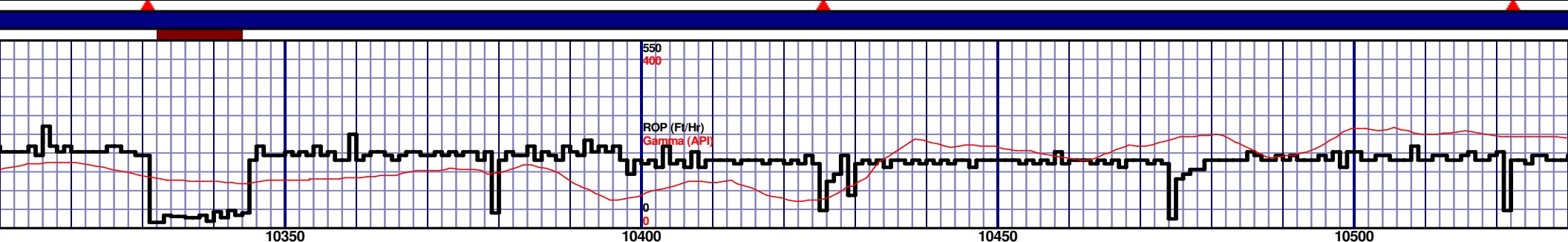
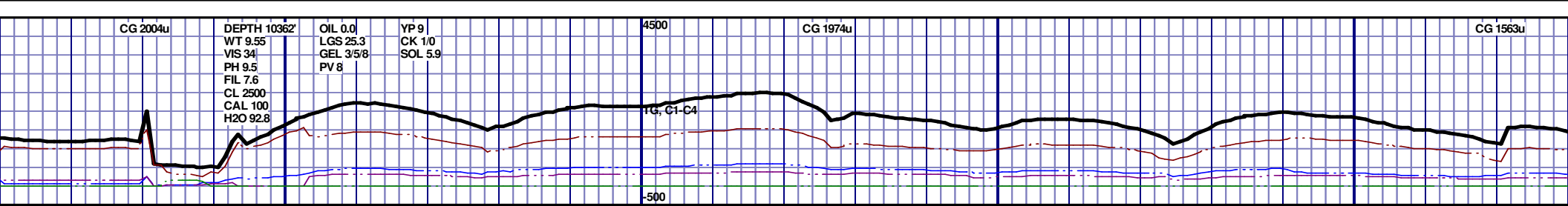
9900' MD-9950' MD: CHK: 50% V/LTGY - MEDGY - DRKGY, BLKY TO SUBBLKY, FXLN TO MICXLN, SFT IMBD PYRC SPEC, OCC FREE CAL, FREE SH, FREE BENT, FREE MARL, MOD GYSHBLK STN, 20% MIN FLOR, FNT BLSHWT O FLOR, IMMED STRMG CUT, BRIYL RNG					9950' MD-10000' MD: CHK: 55% V/LTGY - MEDGY - DRKGY, BLKY TO SUBBLKY, FXLN TO MICXLN, SFT IMBD PYRC SPEC, OCC FREE CAL, FREE SH, FREE BENT, FREE MARL, MOD GYSHBLK STN, 20% MIN FLOR, FNT BLSHWT O FLOR, IMMED STRMG CUT, BRIYL RNG					10000' MD-10050' MD: CHK: 55% V/LTGY - MEDGY - DRKGY, BLKY TO SUBBLKY, FXLN TO MICXLN, SFT IMBD PYRC SPEC, OCC FREE CAL, FREE SH, FREE BENT, FREE MARL, MOD GYSHBLK STN, 30% MIN FLOR, FNT BLSHWT O FLOR, IMMED STRMG CUT, BRIYL RNG					10050' MD-10100' MD: MRL: 45% MEDDRKGY - DRKGY TO SUBBLKY, FXLN TO MICXLN, SFT CHK FRMWRK, IMBD CAL, FREE PYRC BENT, FREE MICXLN CHALK, TT - PP POR, MOD GYSHBLK STN, 15% LTOR MIN FLOR, FNT BLSHWT O FLOR, IMMED STRMG CUT				
50% V/LTGY - MEDGY - DRKGY, BLKY TO SUBBLKY, FXLN TO MICXLN, SFT IMBD PYRC SPEC, OCC FREE CAL, FREE SH, FREE BENT, FREE MARL, MOD GYSHBLK STN, 20% MIN FLOR, FNT BLSHWT O FLOR, IMMED STRMG CUT, BRIYL RNG					55% V/LTGY - MEDGY - DRKGY, BLKY TO SUBBLKY, FXLN TO MICXLN, SFT IMBD PYRC SPEC, OCC FREE CAL, FREE SH, FREE BENT, FREE MARL, MOD GYSHBLK STN, 20% MIN FLOR, FNT BLSHWT O FLOR, IMMED STRMG CUT, BRIYL RNG					55% V/LTGY - MEDGY - DRKGY, BLKY TO SUBBLKY, FXLN TO MICXLN, SFT IMBD PYRC SPEC, OCC FREE CAL, FREE SH, FREE BENT, FREE MARL, MOD GYSHBLK STN, 30% MIN FLOR, FNT BLSHWT O FLOR, IMMED STRMG CUT, BRIYL RNG					45% MEDDRKGY - DRKGY TO SUBBLKY, FXLN TO MICXLN, SFT CHK FRMWRK, IMBD CAL, FREE PYRC BENT, FREE MICXLN CHALK, TT - PP POR, MOD GYSHBLK STN, 15% LTOR MIN FLOR, FNT BLSHWT O FLOR, IMMED STRMG CUT				

MD 9888 TVD 6557.18
INC 89.04 AZ 90.68
VS 3658.17

MD 9983 TVD 6558.61
INC 89.23 AZ 92.89
VS 3750.36

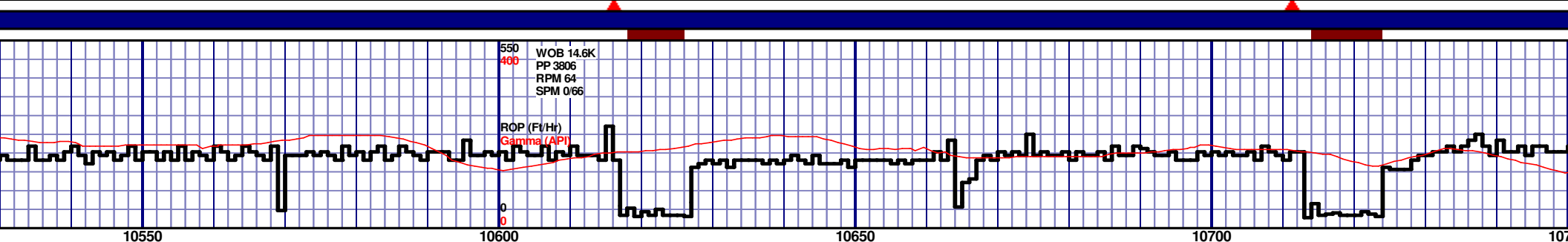
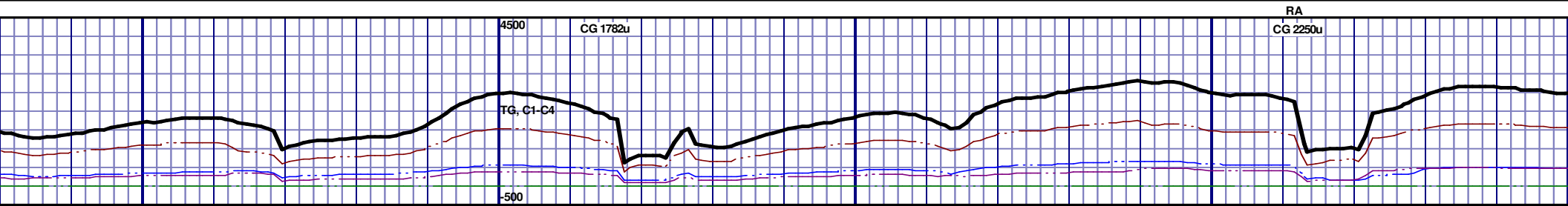
MD 10078 TVD 6559.12
INC 91.29 AZ 100.00
VS 3838.52





MD 10362 TVD 6560.38
INC 89.32 AZ 90.18
VS 4107.55

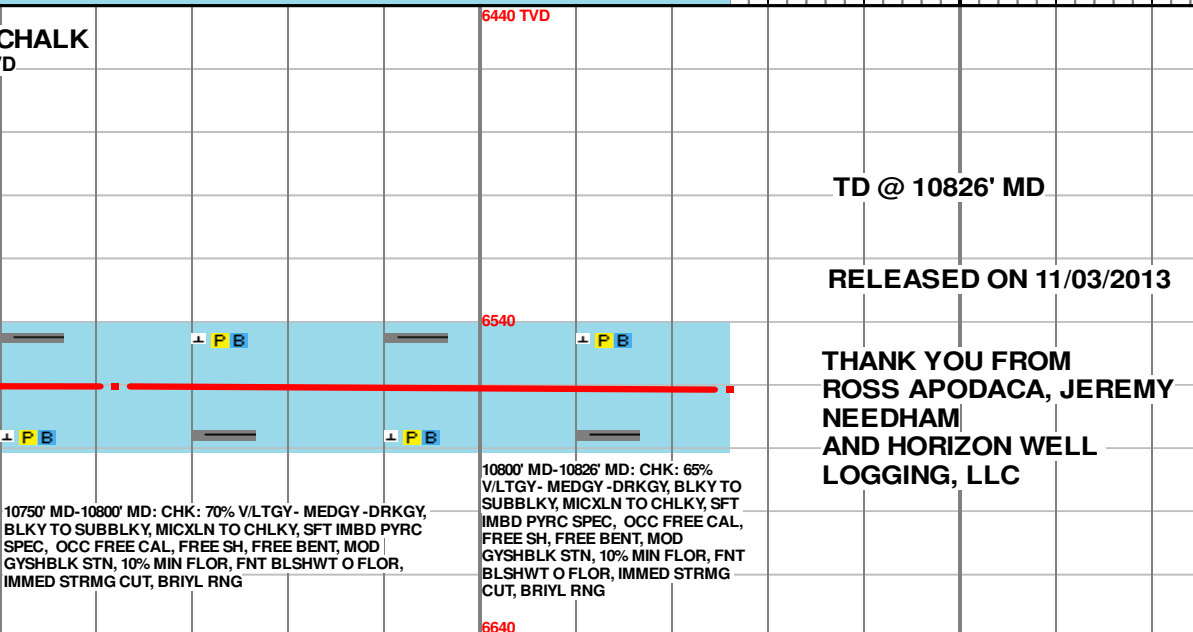
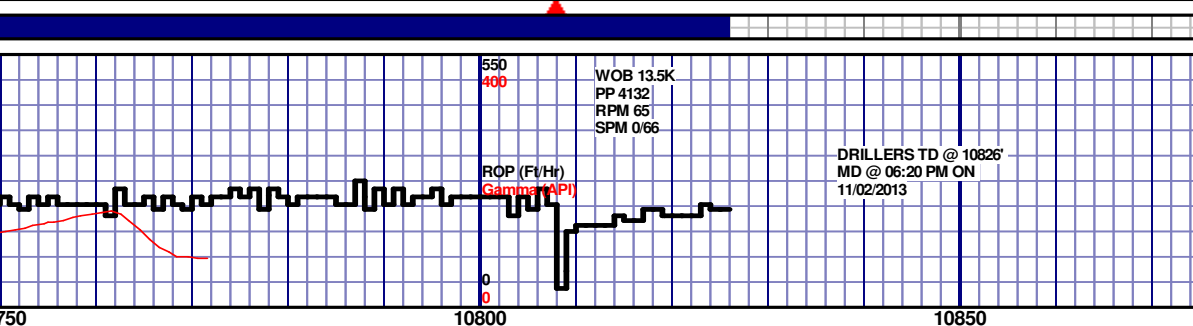
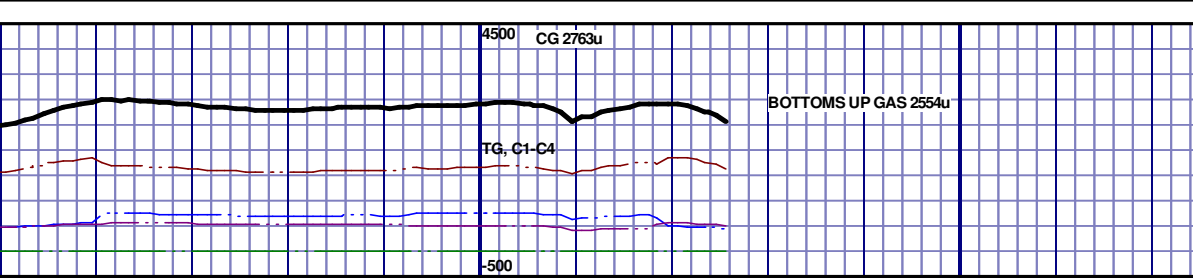
MD 10457 TVD 6561.32
INC 89.54 AZ 88.86
VS 4200.58



6440 TVD										NIOBRARA B C 10734' MD 6560' TVD									
6540																			
6640																			
DRKGY - DRKGY, BLKY TO																			
AL, FREE PYR, FREE																			
TN, 10% LTOR MIN FLOR,																			
G CUT																			
10550' MD-10600' MD:MRL: 45% MEDDRKGY - DRKGY, BLKY TO																			
SUBBLKY, FXLN TO																			
CHLKY, SFT CHK FRMWRK, IMBD CAL, FREE PYR, FREE																			
BENT, TT - PP POR, MOD GYSHBLK STN, 5% LTOR MIN																			
FLOR, FNT BLSHWT O FLOR, IMMED STRMG CUT																			
10600' MD-10650' MD:MRL: 50% MEDDRKGY - DRKGY, BLKY TO																			
SUBBLKY, FXLN TO																			
CHLKY, SFT CHK FRMWRK, IMBD CAL, FREE PYR, FREE BENT,																			
TT - PP POR, MOD GYSHBLK STN, 5% LTOR MIN FLOR, FNT																			
BLSHWT O FLOR, IMMED STRMG CUT																			
10650' MD-10700' MD:MRL: 45% MEDDRKGY - DRKGY, BLKY TO																			
SUBBLKY, FXLN TO																			
CHLKY, SFT CHK FRMWRK, IMBD CAL, FREE PYR, FREE BENT,																			
TT - PP POR, MOD GYSHBLK STN, 5% LTOR MIN FLOR, FNT																			
BLSHWT O FLOR, IMMED STRMG CUT																			
10700' MD-10750' MD: CHK: 70% V/LTGY - MEDGY-DRKGY,																			
BLKY TO SUBBLKY, MICLN TO CHLKY, SFT IMBD PYRC																			
SPEC, OCC FREE CAL, FREE SH, FREE BENT, MOD																			
GYSHBLK STN, 10% MIN FLOR, FNT BLSHWT O FLOR,																			
IMMED STRMG CUT, BRIYL RNG																			

MD 10552 TVD 6561.12
INC 90.71 AZ 86.73
VS 4293.68

MD 10647 TVD 6560.12
INC 90.49 AZ 86
VS 4387.62



TD @ 10826' MD

RELEASED ON 11/03/2013

THANK YOU FROM
ROSS APODACA, JEREMY
NEEDHAM
AND HORIZON WELL
LOGGING, LLC