



RADIAL BOND LOG
GAMMA RAY
CCL

Company		BILL BARRETT CORPORATION					
Well		MERRITT 6-66-9-0758BH					
Field		WATTENBERG					
County		WELD					
State		COLORADO					
Location:		API # : 05-123-37694					
SHL: 260' FNL & 2015' FEL NW NE		Other Services					
SEC 9 TWP 6N RGE 66W		Elevation					
Permanent Datum		G.L.					
Log Measured From		K.B. 22'					
Drilling Measured From		K.B. 4844'					
		D.F. 4843'					
		G.L. 4822'					
Date		1-18-14					
Run Number		ONE					
Depth Driller		11707'					
Depth Logger		6698'					
Bottom Logged Interval		6695'					
Top Log Interval		418'					
Open Hole Size		8.375"					
Type Fluid		WATER					
Density / Viscosity		1.0					
Max. Recorded Temp.		195					
Estimated Cement Top		770'					
Time Well Ready		N/A					
Time Logger on Bottom		N/A					
Equipment Number		3812					
Location		GREELEY CO.					
Recorded By		N. BREHMER					
Witnessed By		E. LYONS					
Borehole Record							
Tubing Record							
Run Number	Bit	From	To	Size	Weight	From	To
ONE							
TWO							
THREE							
FOUR							
Casing Record		Size		Wgt/Ft	Top		Bottom
Surface String		9 5/8"		36#	SURFACE		849'
Prot. String							
Production String		7"		26#	SURFACE		7455'
Liner		4.5"		11 6#	6501'		11697'

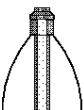
<<< Fold Here >>>

All interpretations are opinions based on inferences from electrical or other measurements and we cannot and do not guarantee the accuracy or correctness of any interpretation, and we shall not, except in the case of gross or willful negligence on our part, be liable or responsible for any loss, costs, damages, or expenses incurred or sustained by anyone resulting from any interpretation made by any of our officers, agents or employees. These interpretations are also subject to our general terms and conditions set out in our current Price Schedule.



Comments

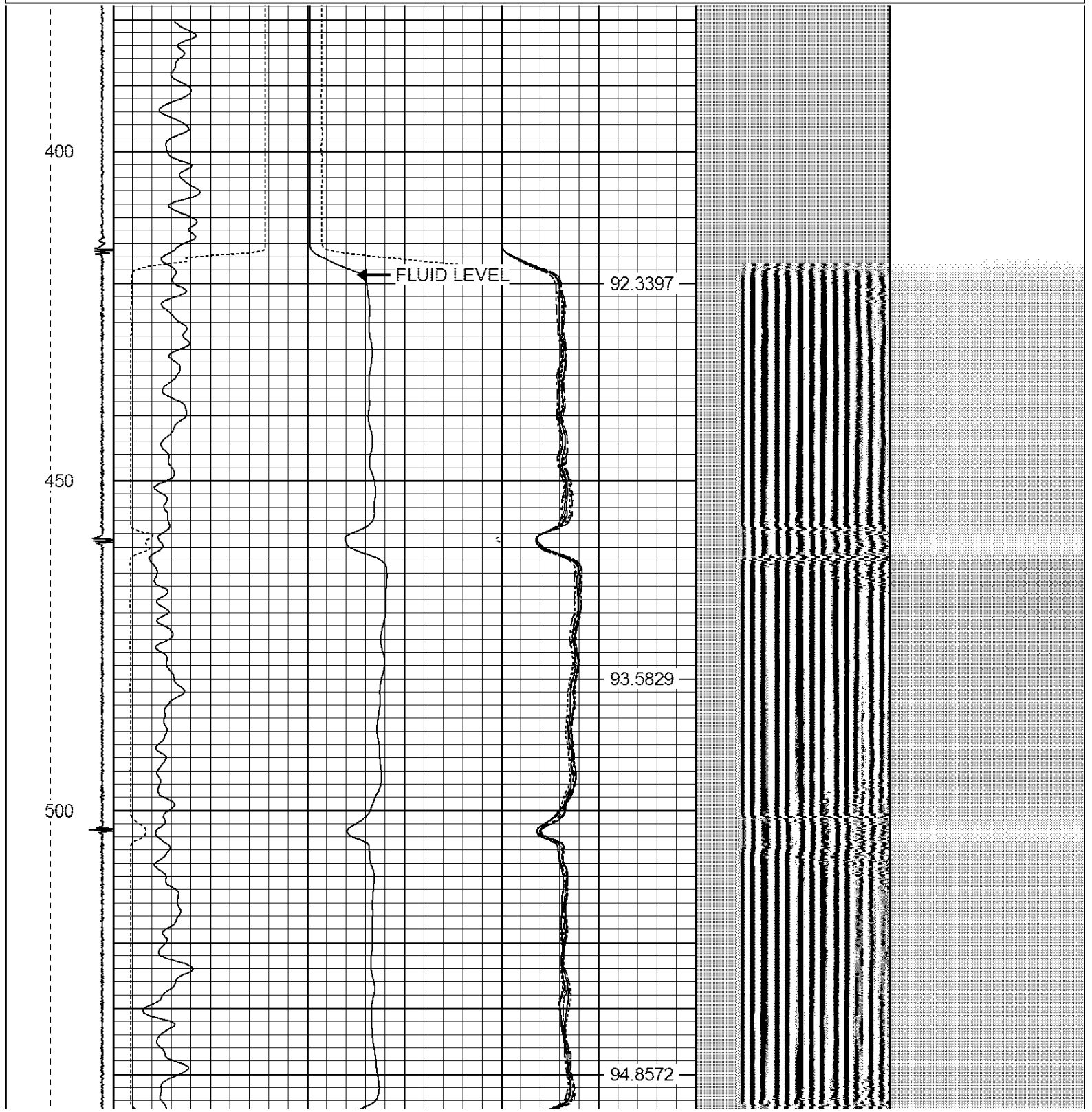
CORRELATED TO LINER HANGER
RAN CBL TO VERIFY CEMENT BOND

THANK YOU FOR USING WARRIOR ENERGY SERVICES

Sensor	Offset (ft)	Schematic	Description	Len (ft)	OD (in)	Wt (lb)
						

			PTS275	2.83	2.75	
HEADVOLT	16.25					
IntTemp	14.83					
WVF3FT	11.58		RBT-Probe (Base)	8.92	2.75	90.00
WVFCAL	11.58		Probe Radii Bond Tool with Digital Telemetry			
WVFS1	11.58					
WVFS2	11.58					
WVFS3	11.58					
WVFS4	11.58					
WVFS5	11.58					
WVFS6	11.58					
WVFS7	11.58					
WVFS8	11.58					
WVF5FT	10.58					
CNLSC	6.00		CNT-Probe_B (275)	3.00	2.75	40.00
CNSSC	5.17		6 bow centralizer			
CCL	3.64					
			GR-Probe (275)	4.33	2.75	30.00
			Probe 2.75"			
GR	0.90					
Dataset: merriott 6-66-9-0758bh.db: field/well/run1/pass2 Total Length: 19.08 ft Total Weight: 160.00 lb O.D. 2.75 in						

-9	CCL	1	250	TT (usec)	950	0	AMP (mV)	100	0	AMPS1	100	200	VDL	1200	1	Cement Map	8			
LSPD (ft/min)	0		GR (GAPI)		200	0	AMPx5 (mV)		20	0	AMPS2	100						1	100	
	200		GR (GAPI)		400					0	AMPS4	100								
										0	AMPS5	100								
										0	AMPS6	100								
										0	AMPS7	100								
0	250									0	AMPS8	100								
											IntTemp (degF)									



550

600

650

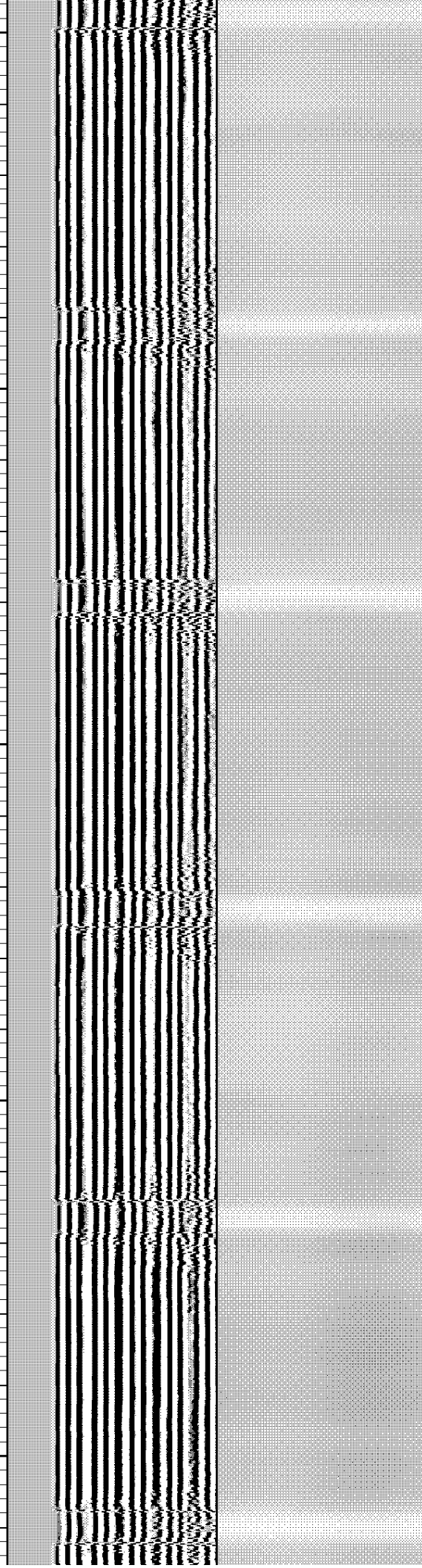
700

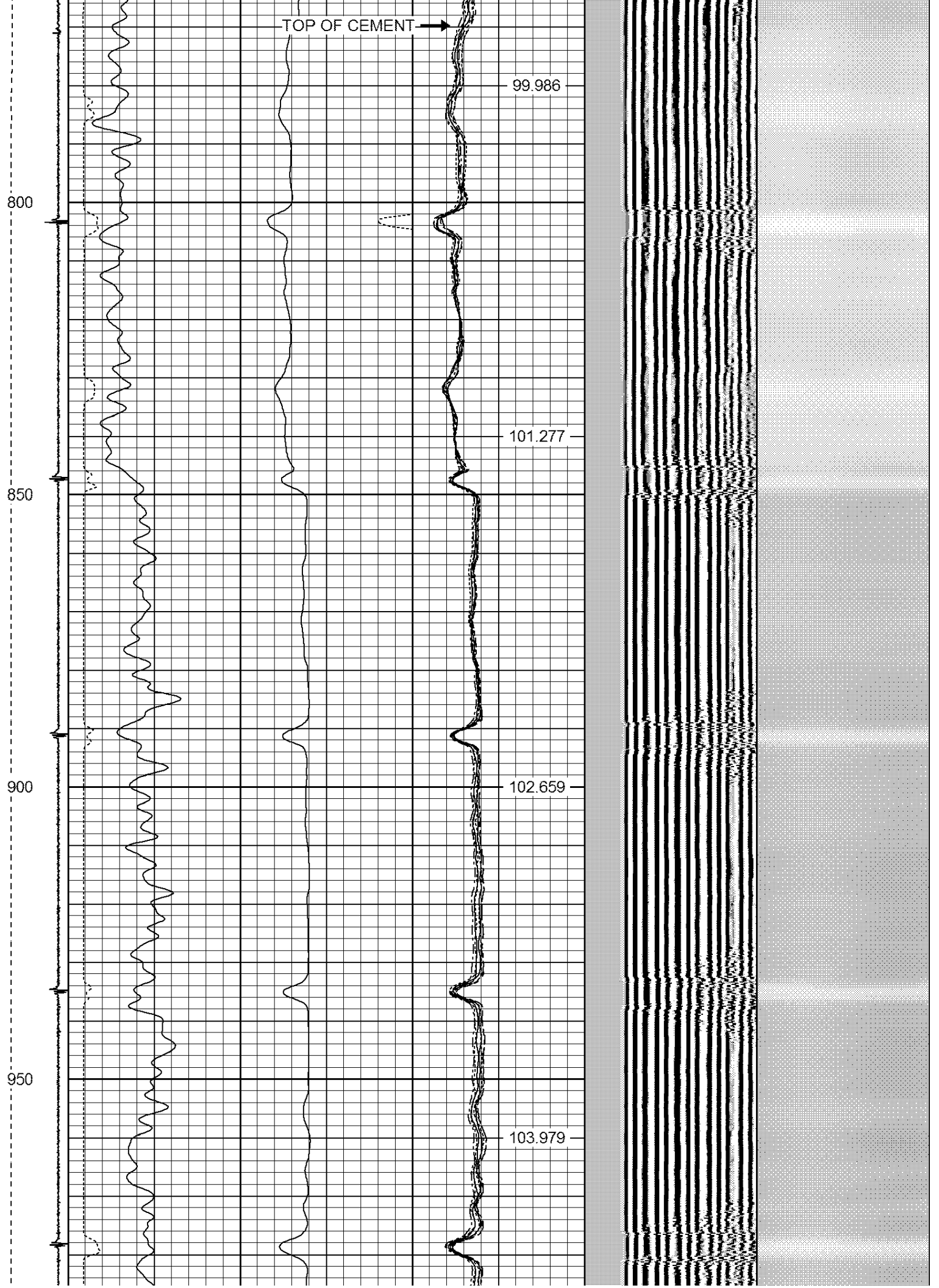
750

96.1609

97.426

98.694





1000

1050

1100

1150

1200

105.337

106.598

107.968

109.313

1250

1300

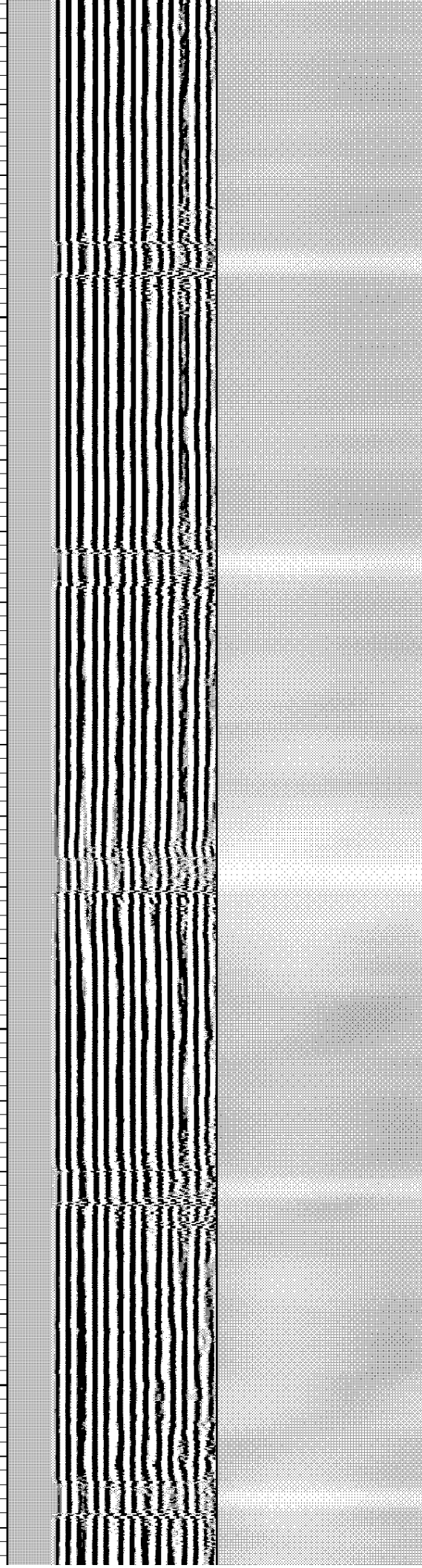
1350

1400

110.631

111.979

113.449



1450

1500

1550

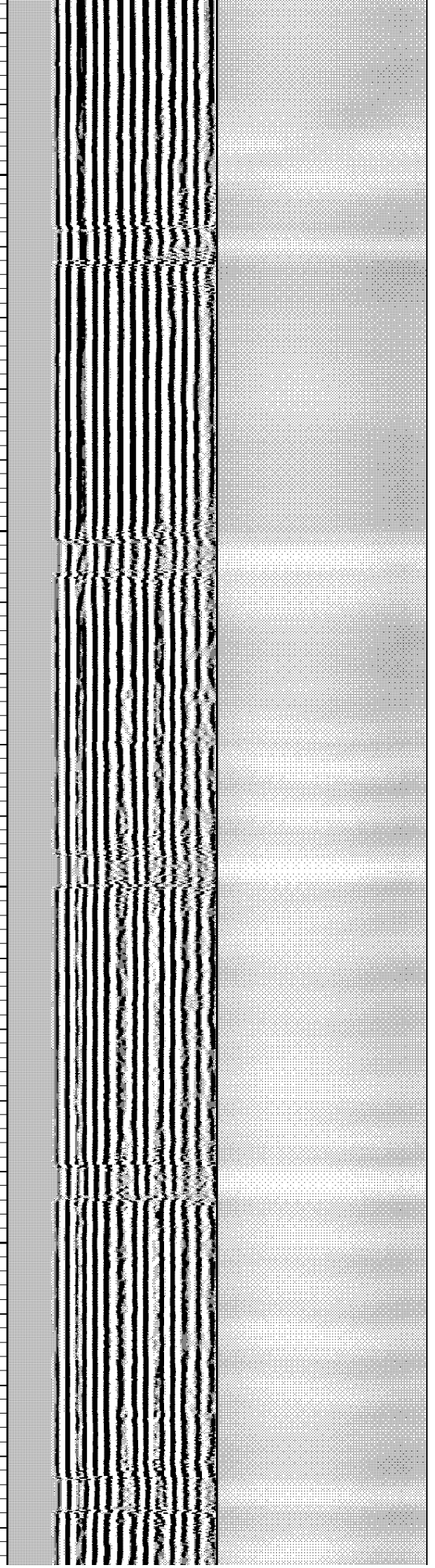
1600

114.796

116.112

117.607

118.964



1650

1700

1750

1800

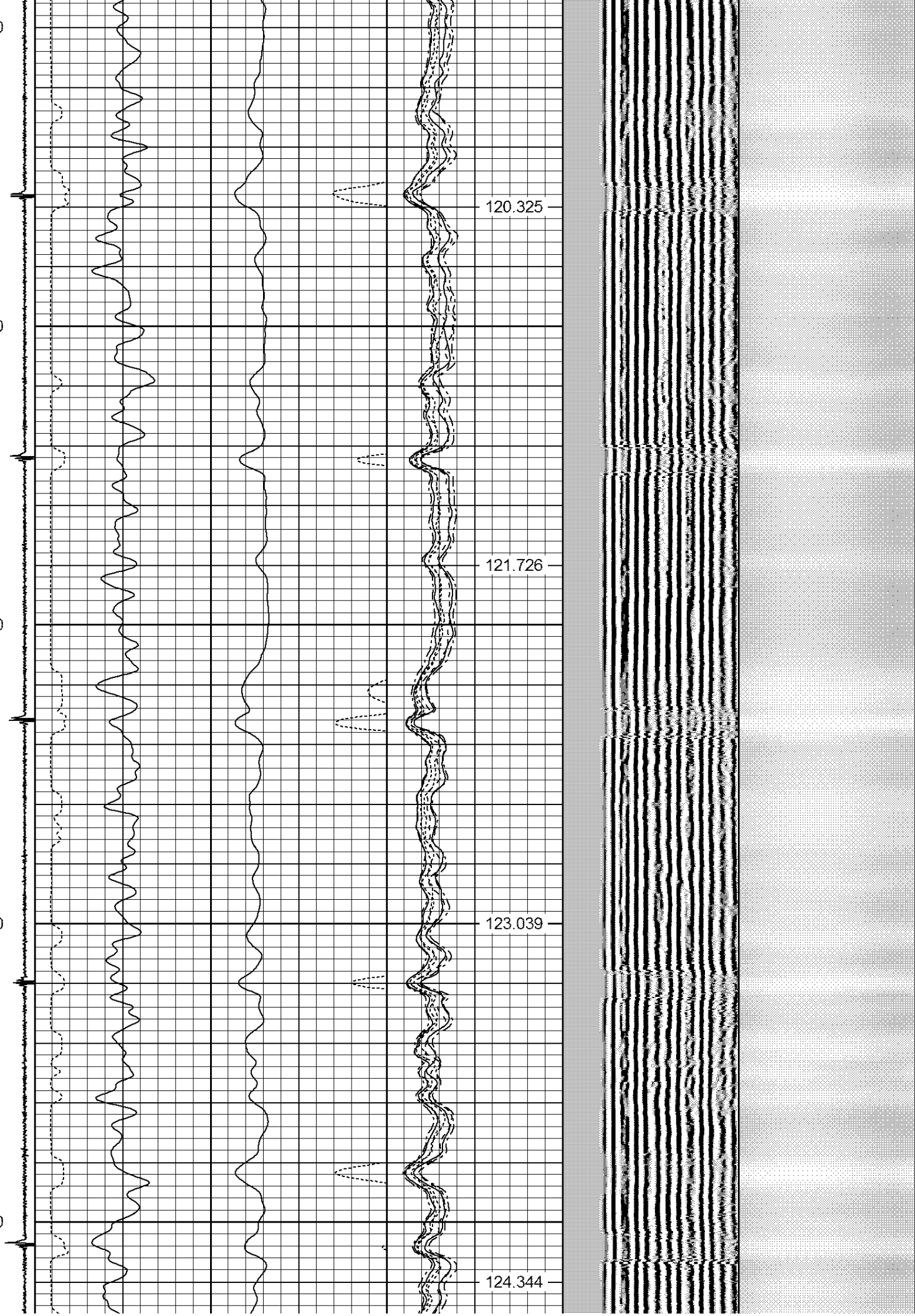
1850

120.325

121.726

123.039

124.344



1900

1950

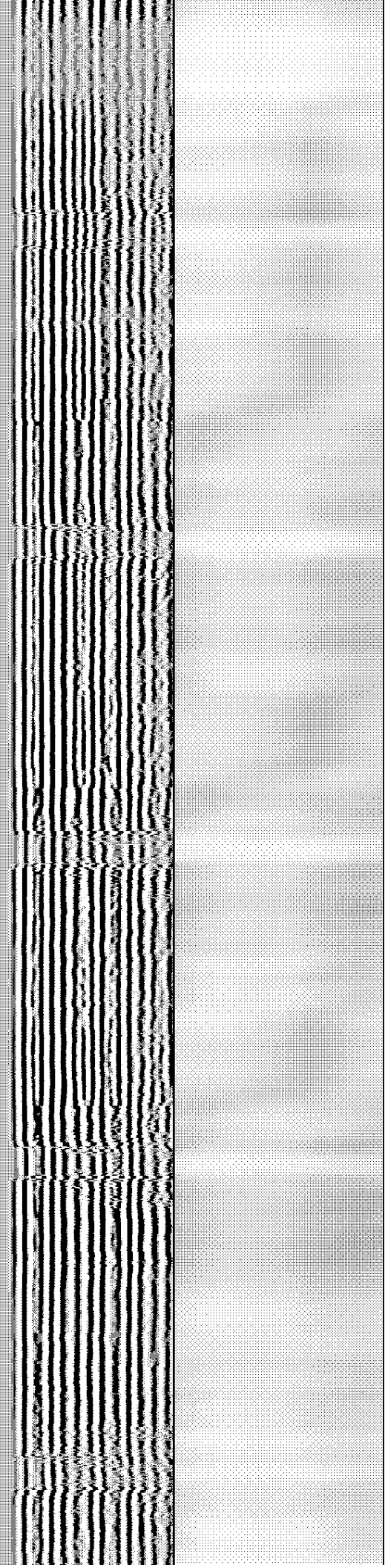
2000

2050

125.802

127.169

128.513



2100

129.939

2150

131.224

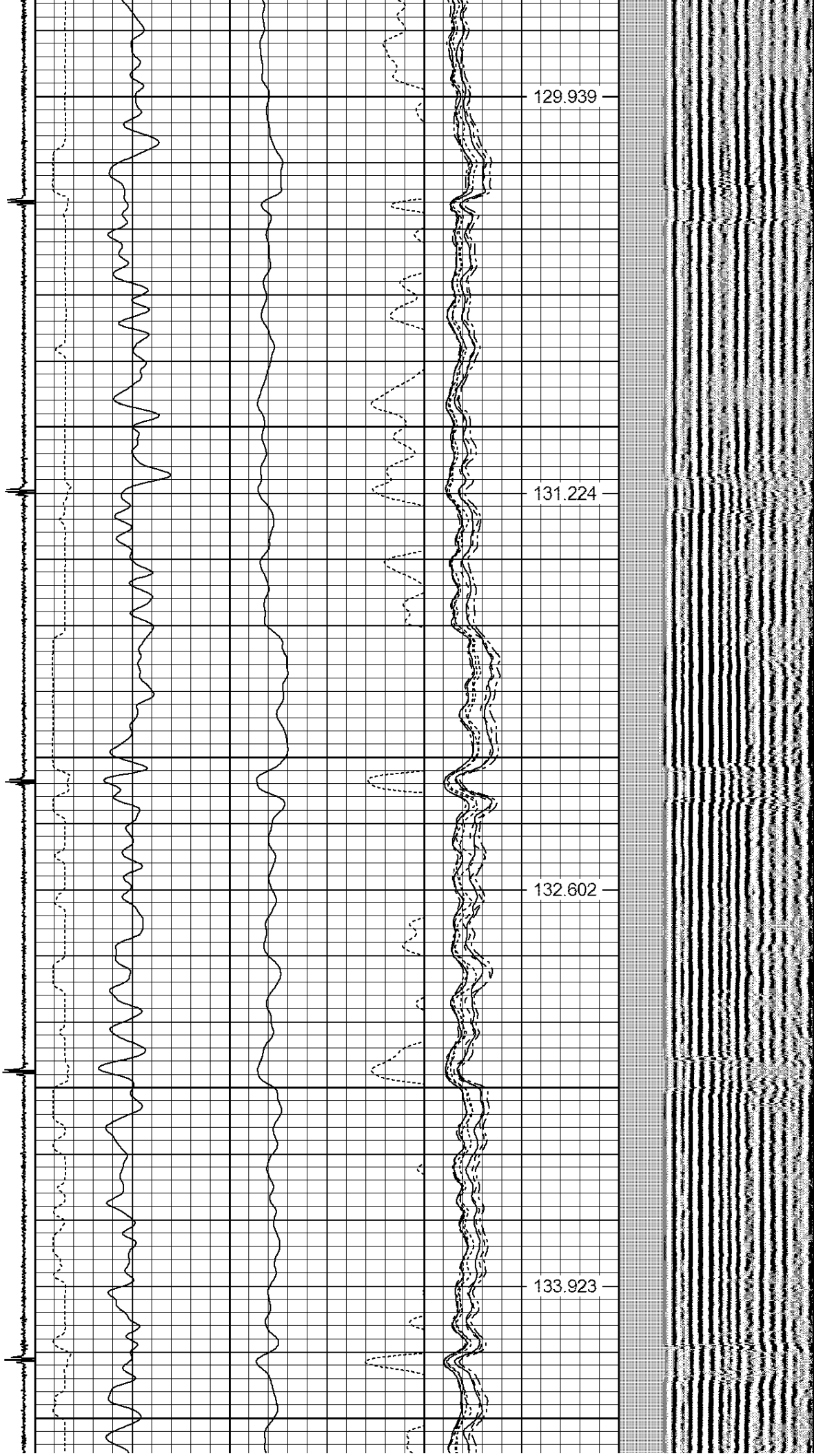
2200

132.602

2250

133.923

2300



2350

2400

2450

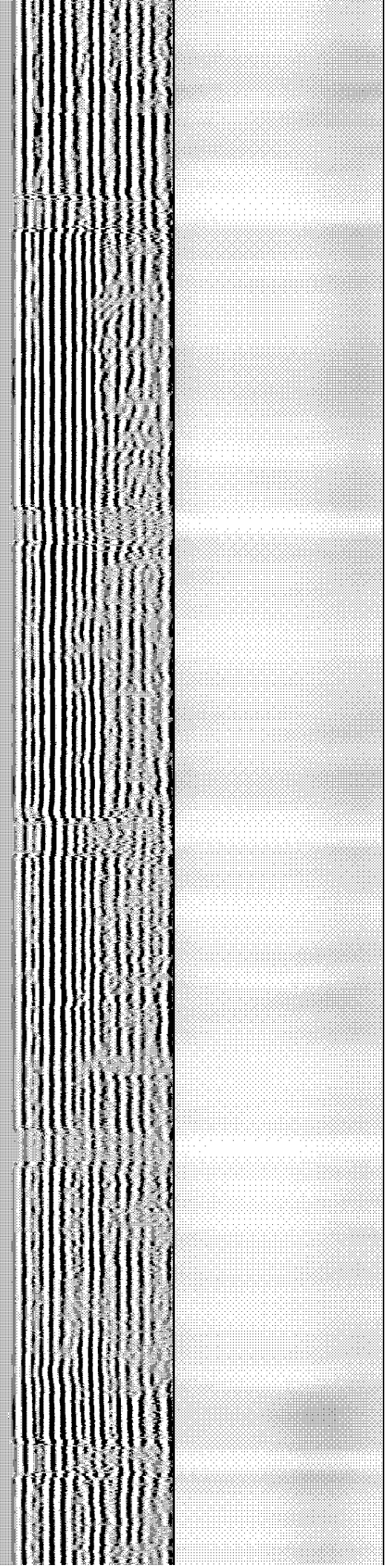
2500

135.193

136.579

137.842

139.168



2550

2600

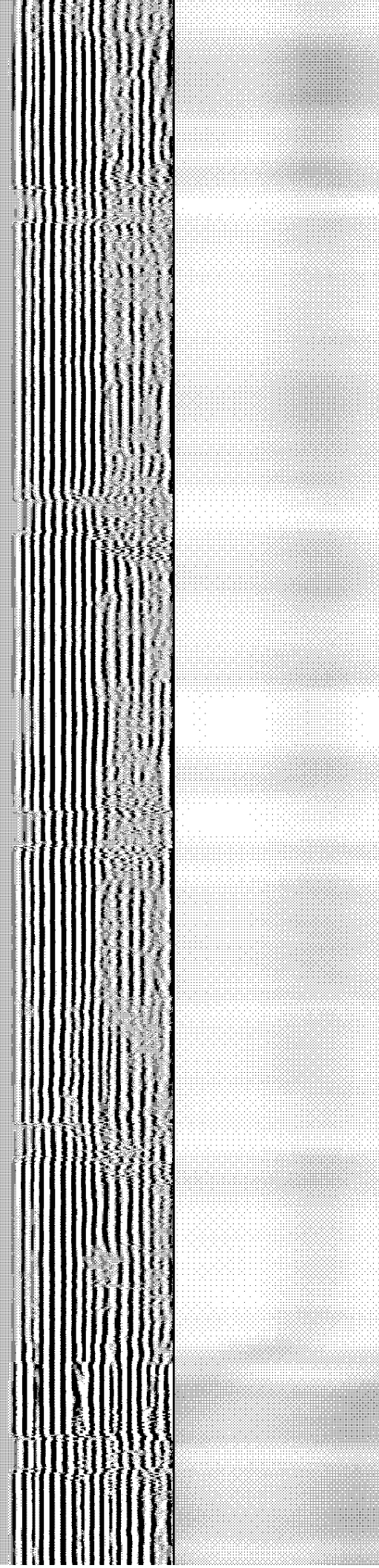
2650

2700

140.459

141.842

143.129



2750

2800

2850

2900

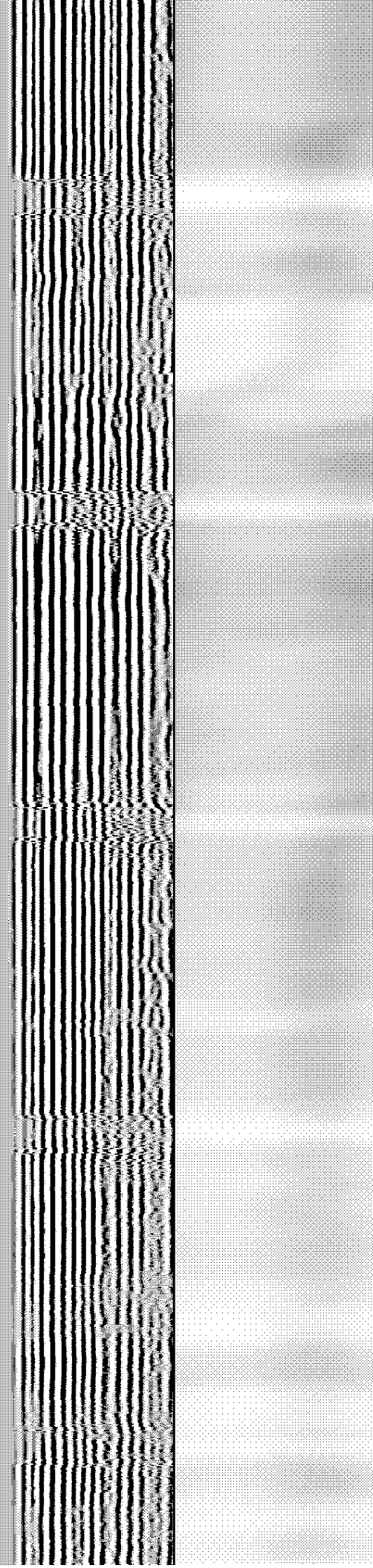
2950

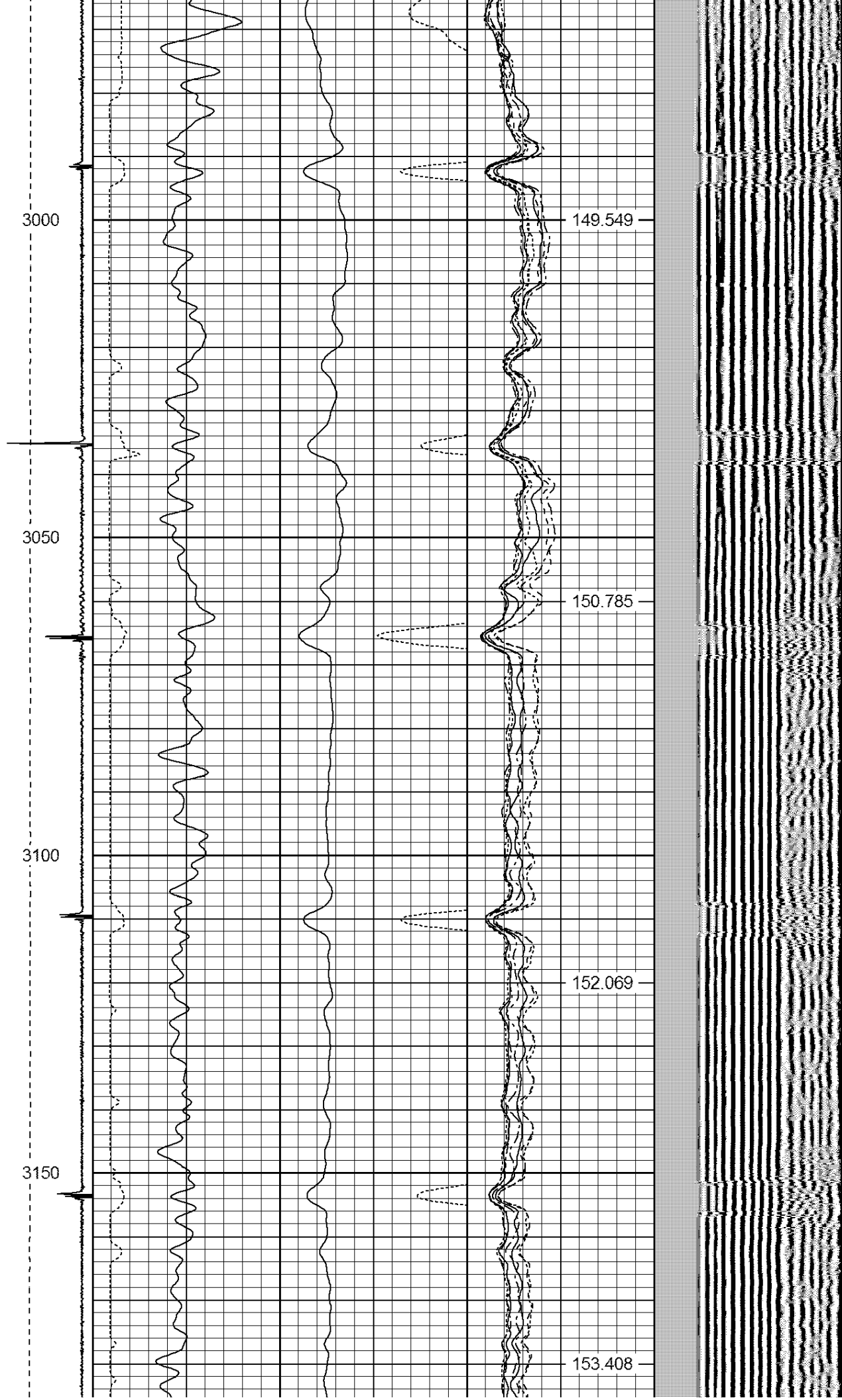
144.431

145.649

146.966

148.235





3200

3250

3300

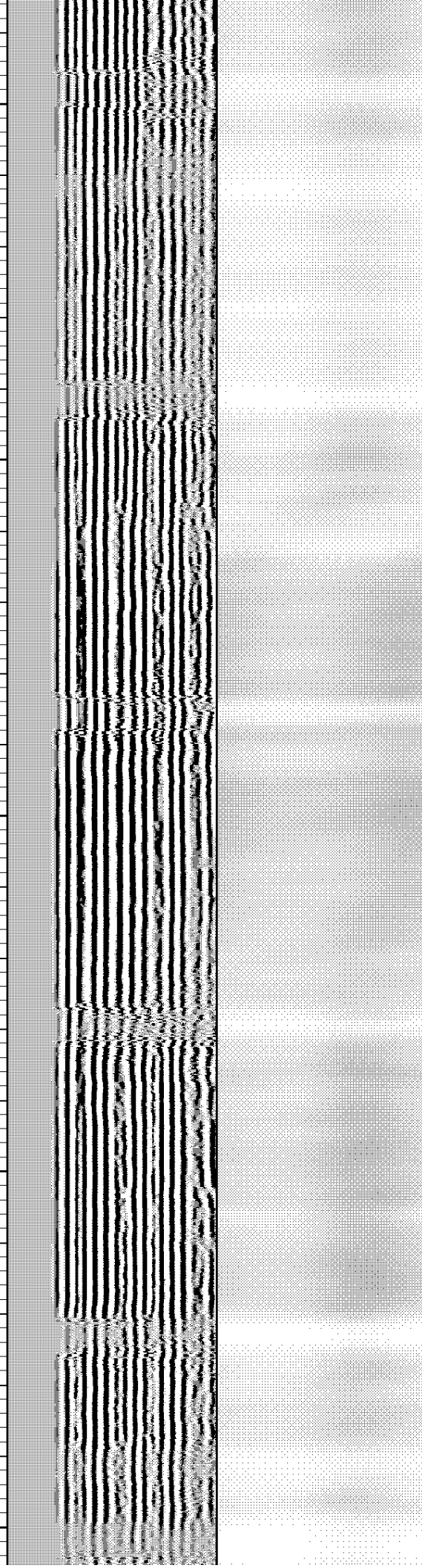
3350

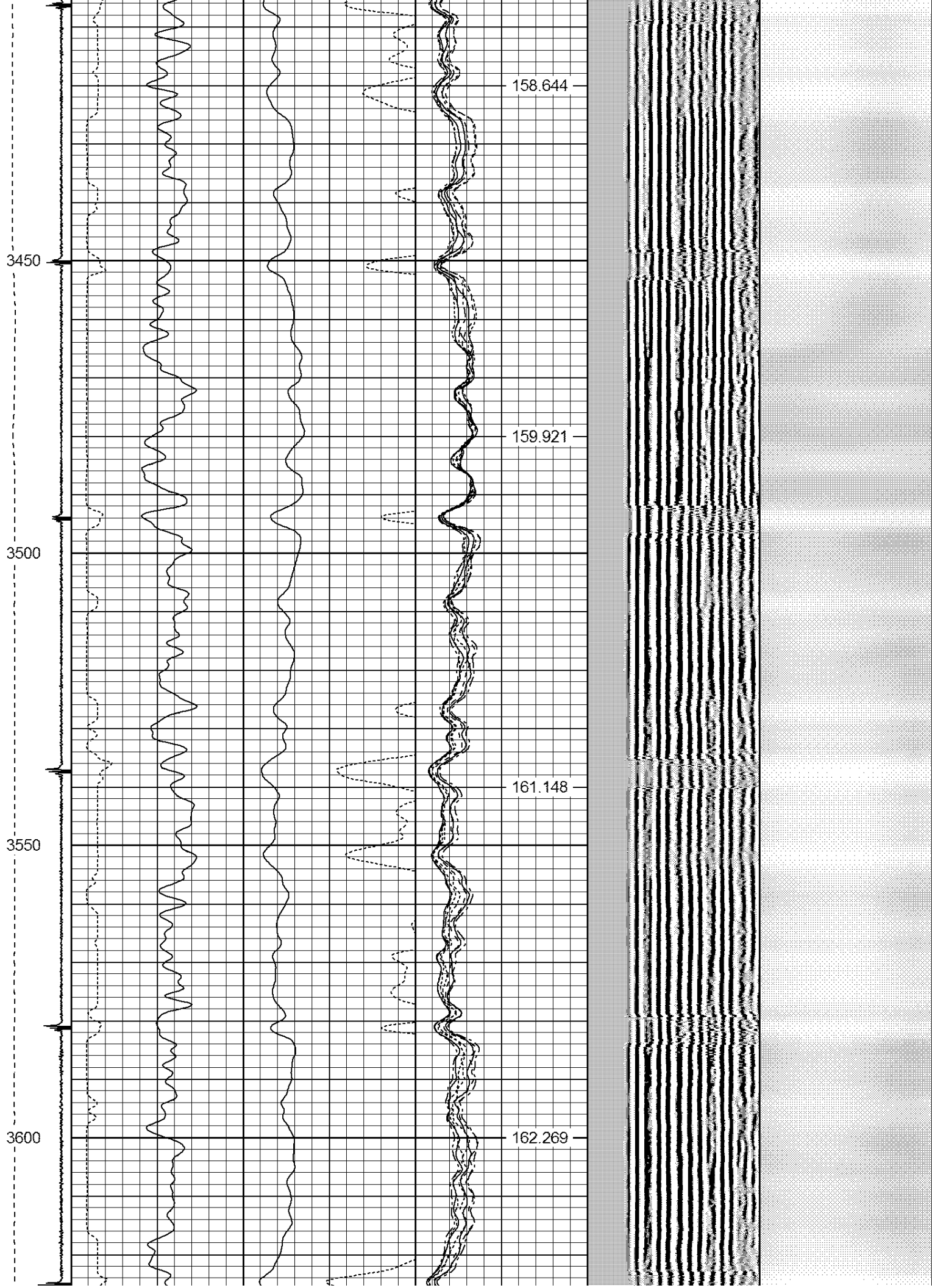
3400

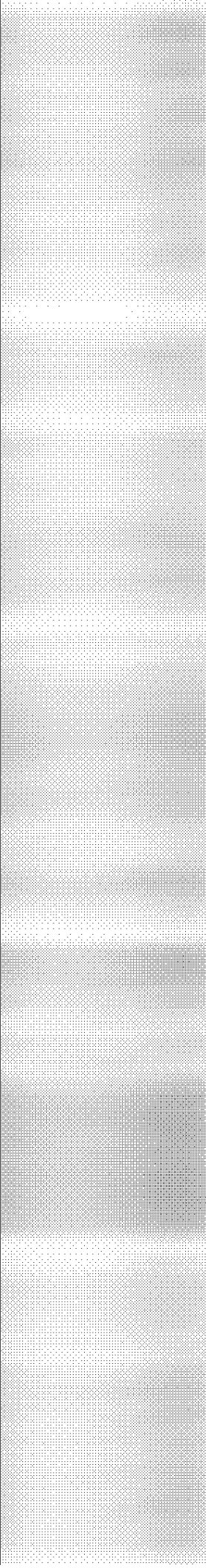
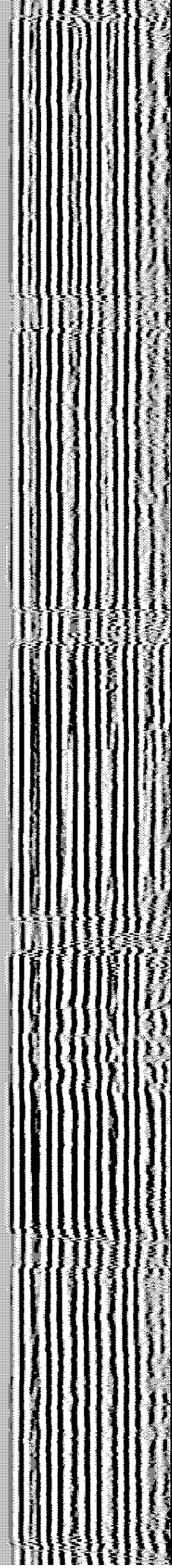
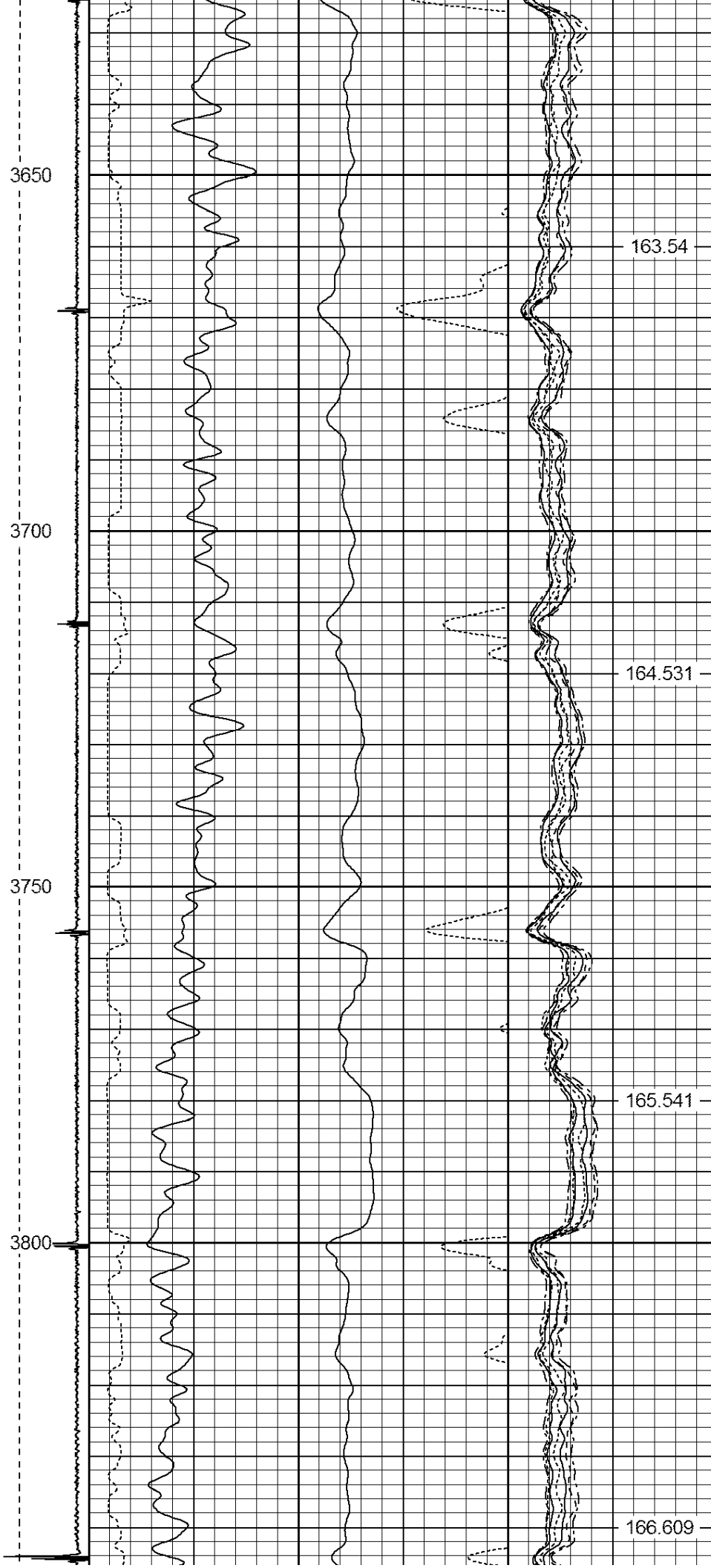
154.747

155.965

157.323







3850

3900

3950

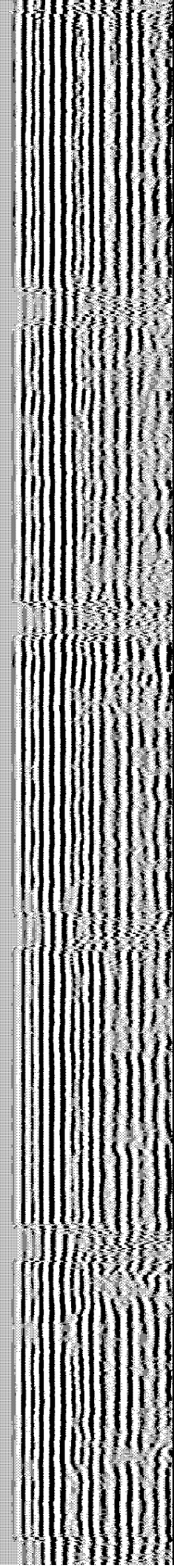
4000

4050

167.788

168.858

169.89



4100

4150

4200

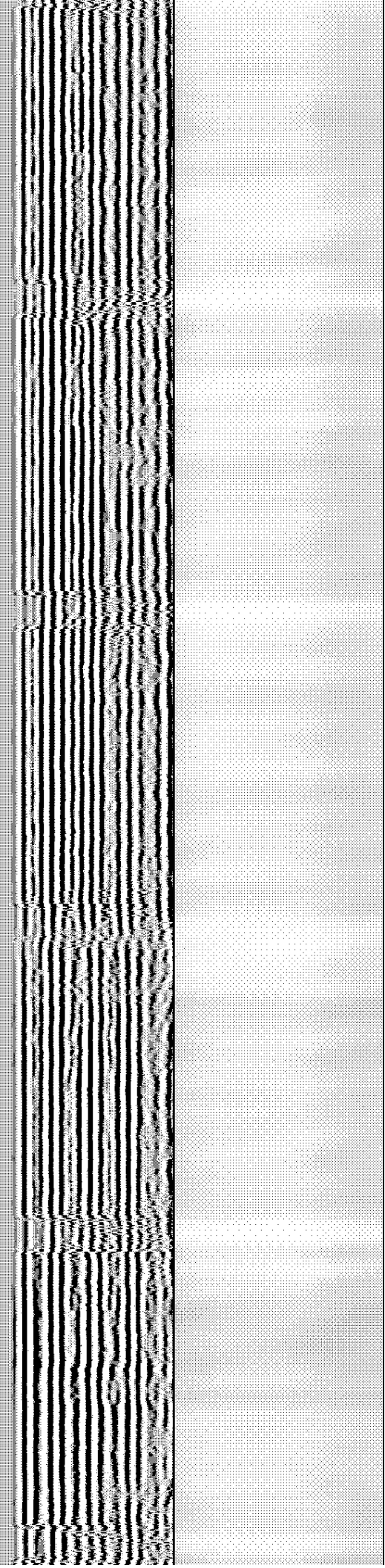
4250

171.13

172.13

173.229

174.264



4300

4350

4400

4450

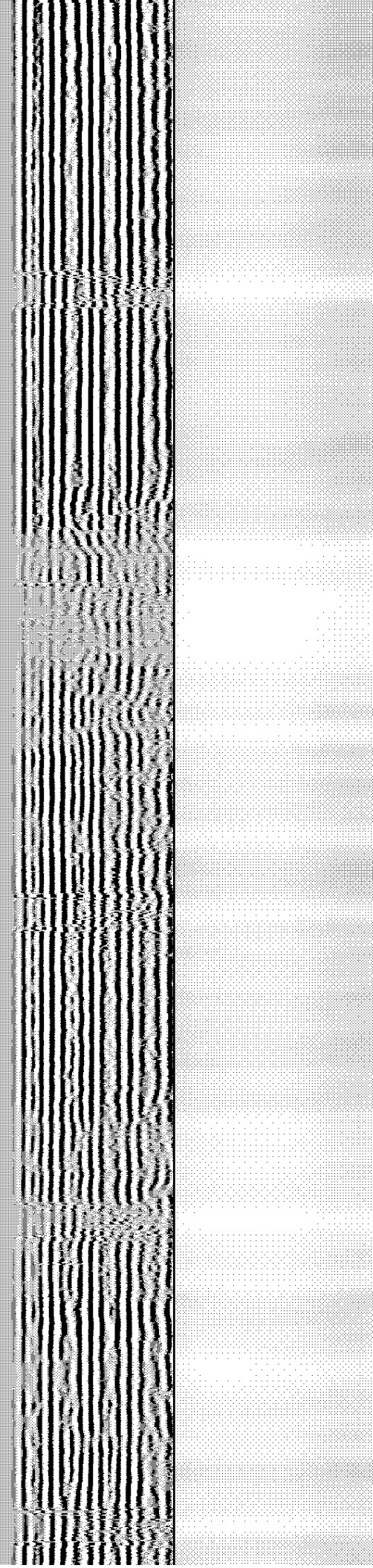
4500

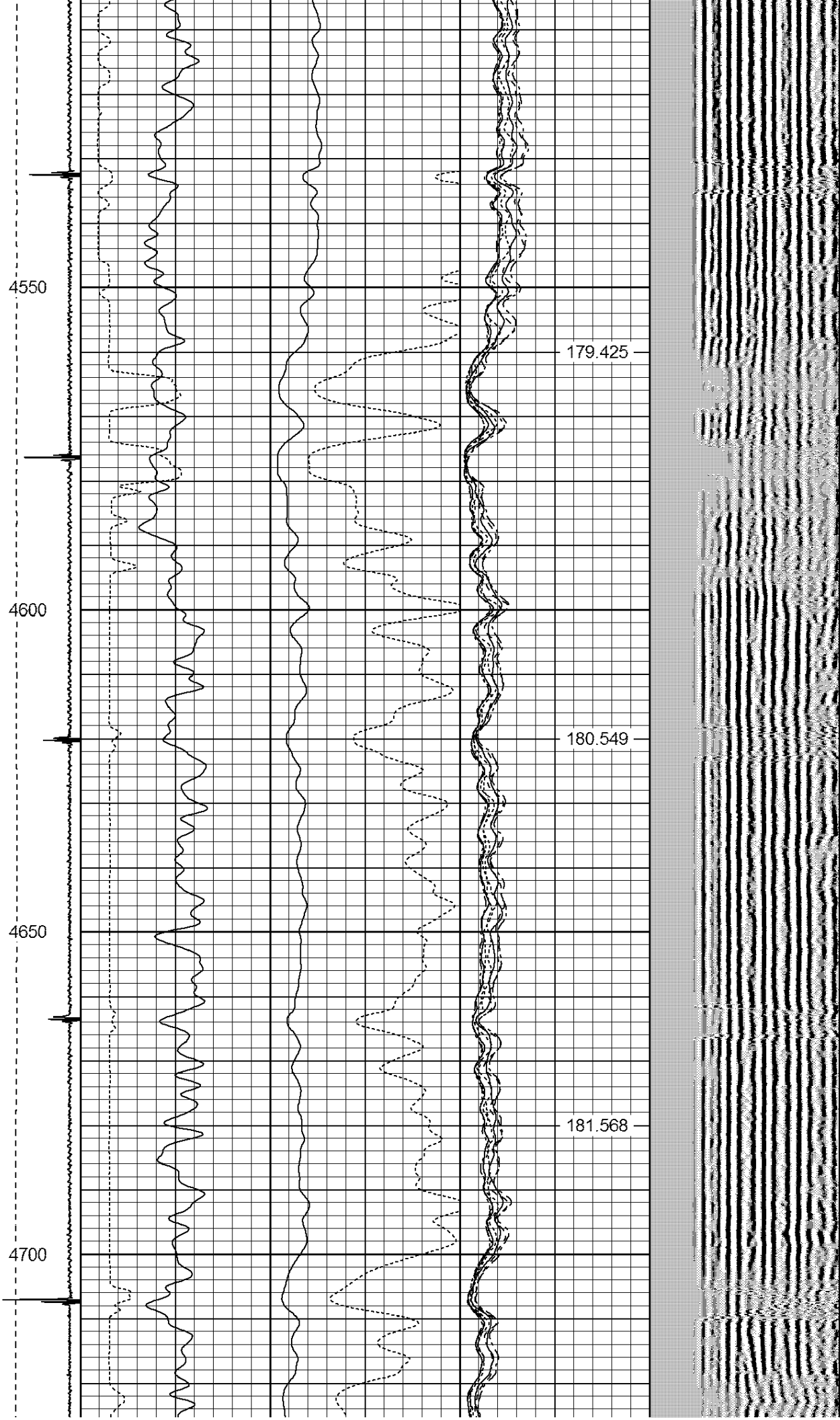
175.371

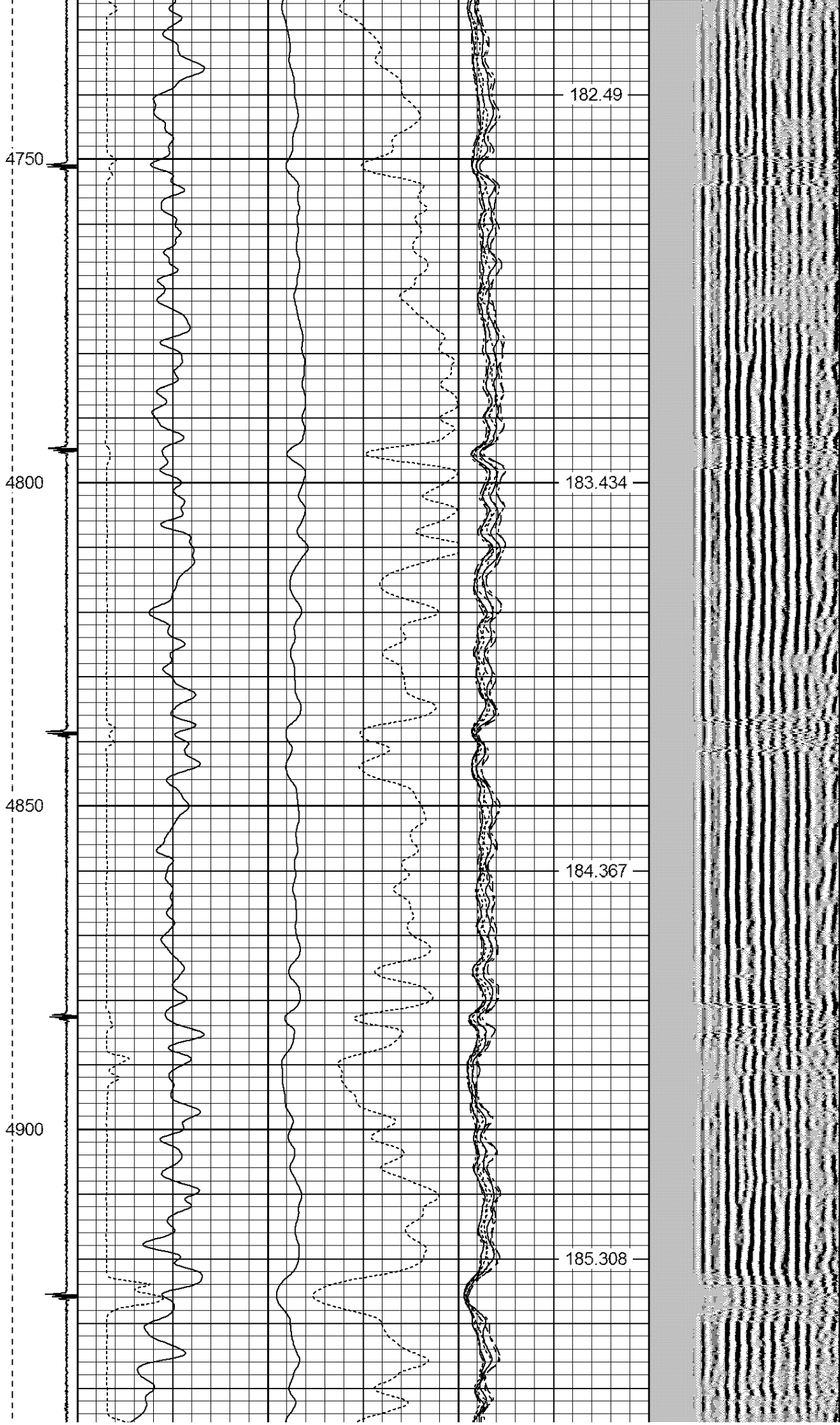
176.435

177.48

178.536







4950

5000

5050

5100

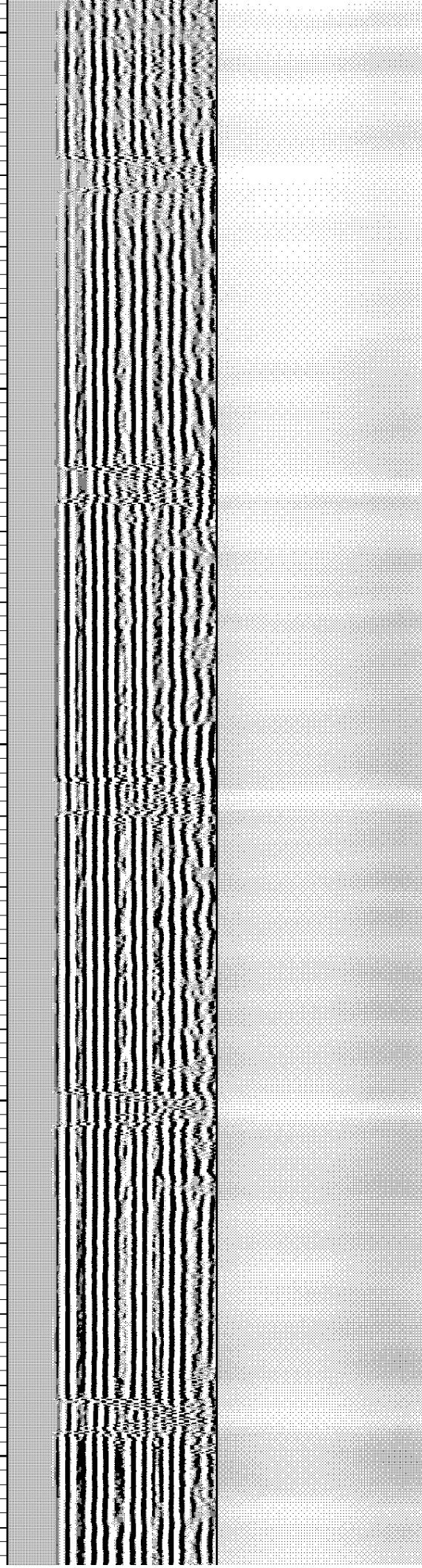
5150

186.136

187.101

187.962

188.712



5200

5250

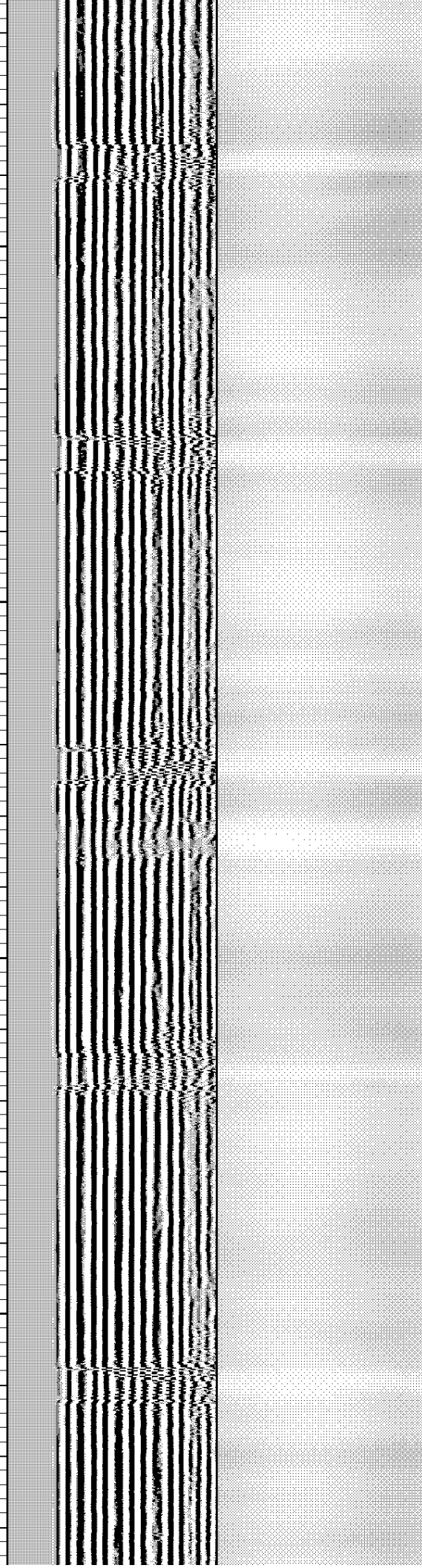
5300

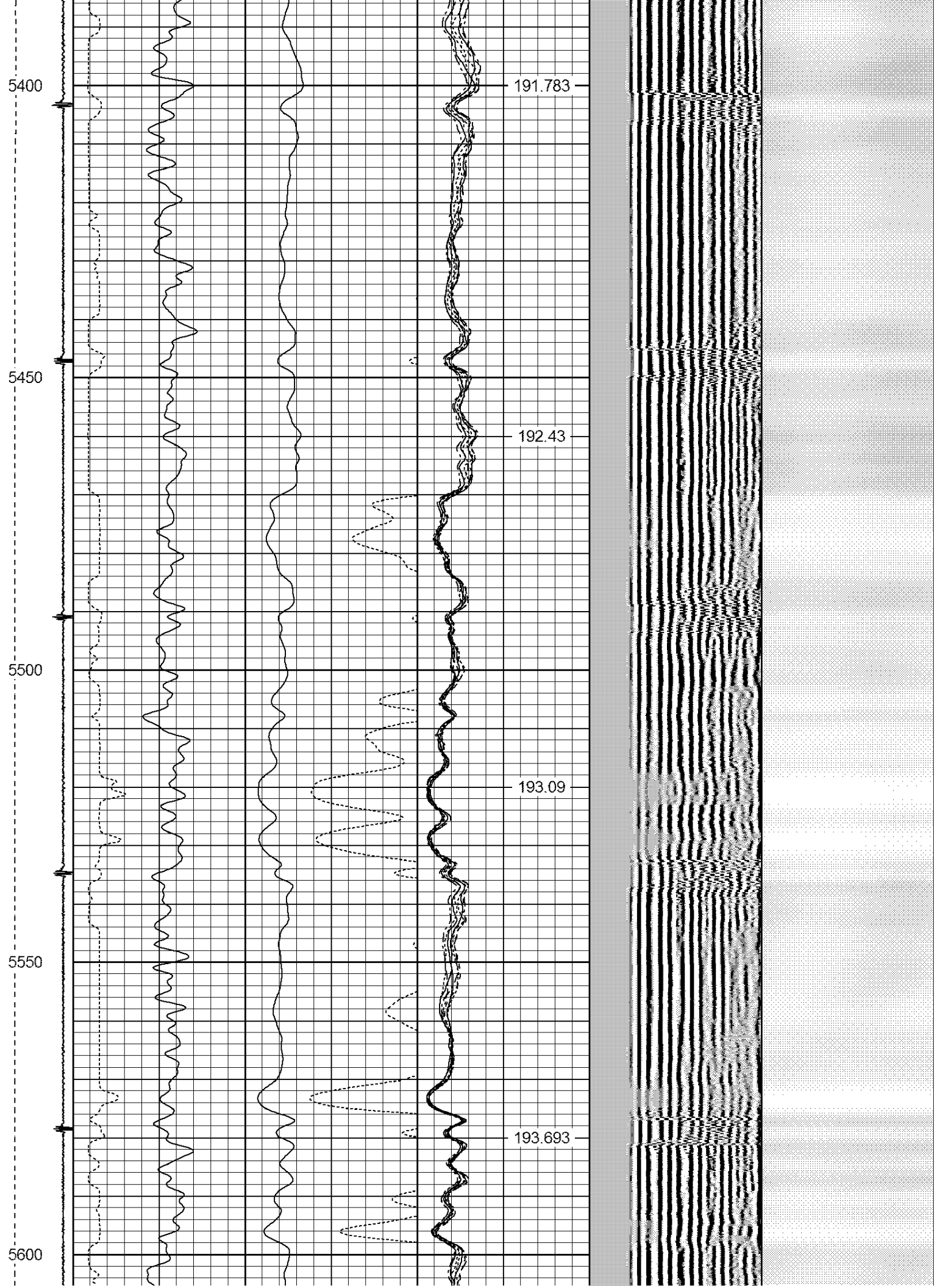
5350

189.647

190.354

191.157





5650

5700

5750

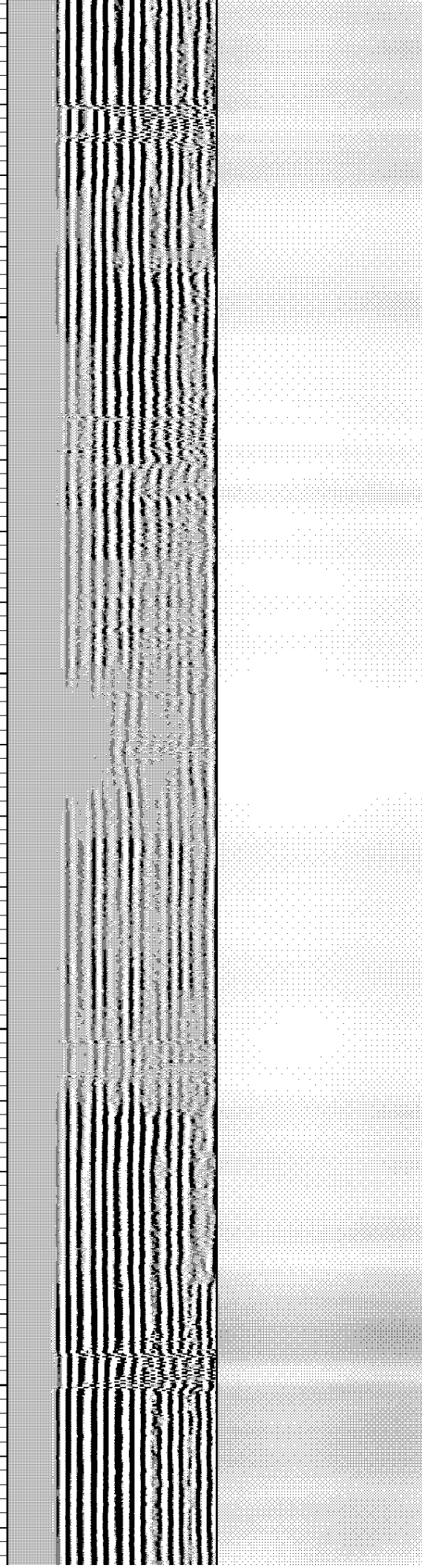
5800

194.132

194.536

195.033

195.212



5850

5900

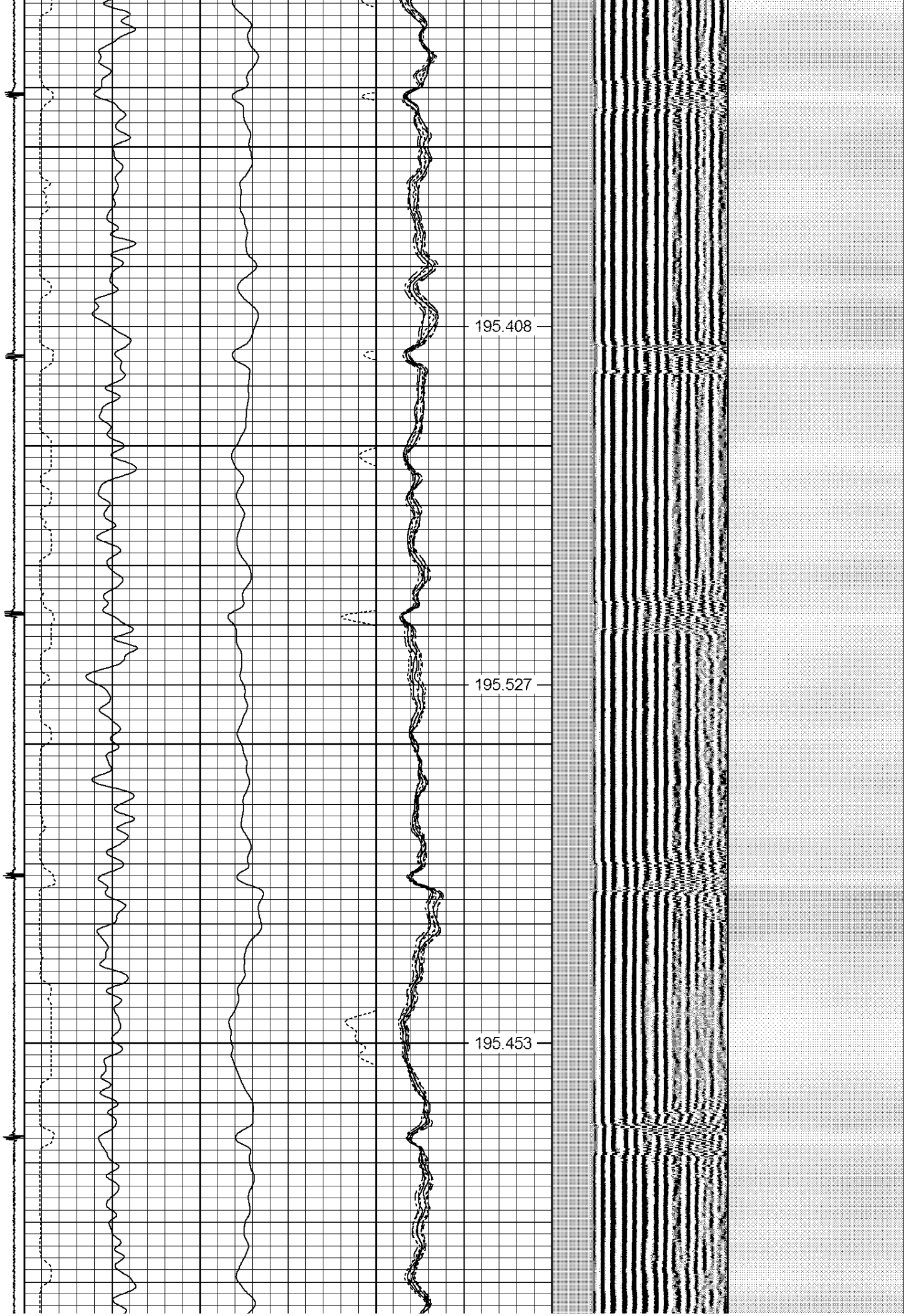
5950

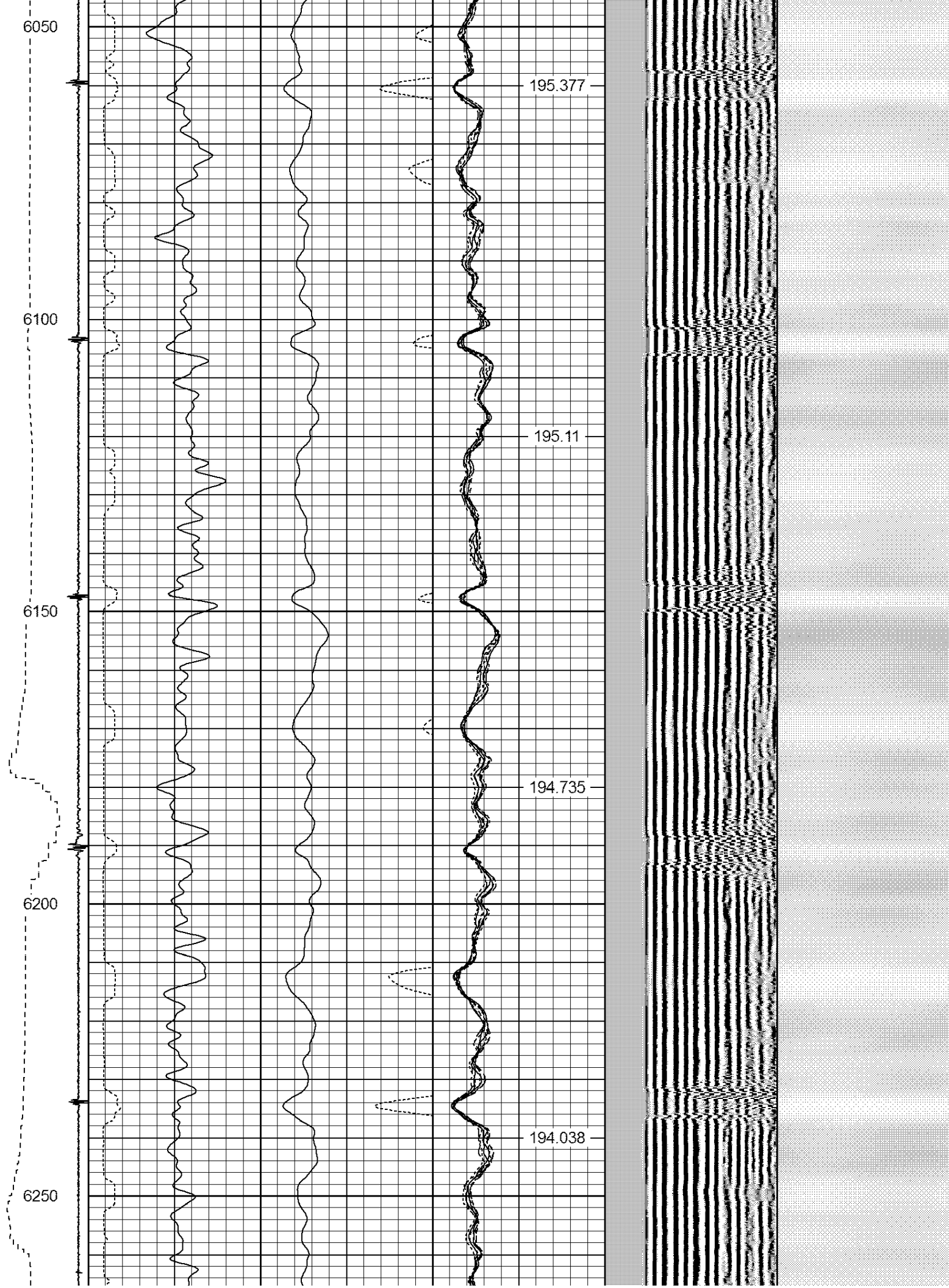
6000

195.408

195.527

195.453





6300

193.387

6350

192.677

6400

191.878

6450

← LSPD

← TT

← CCL

← GR

← AMP

← AMPS8
← AMPS7
← AMPS6
← AMPS5
← AMPS4
← AMPS2
← AMPS1
190.962

