

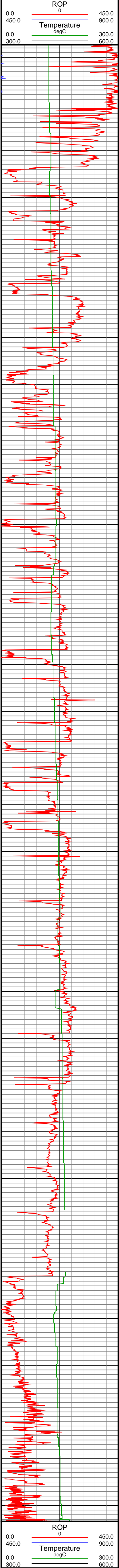
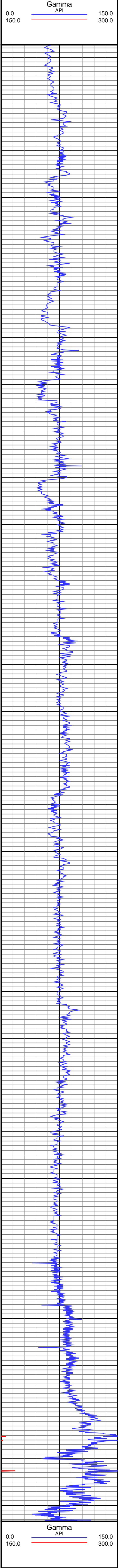


Merritt 6-66-9-0758BH

TVD  
1":100'

Company: Bill Barrett  
Well Name: Merritt 6-66-9-0758BH  
API: 05-123-37694-00  
Rig Id: Nabors M22

State: CO  
County/Parish: Weld  
Survey Company: Crescent Directional Drilling  
Job number: CA-131783



#42 MD(4003.00) Inc(9.8) Azm(68.1) TVD(3973.55) VS(-87.57) NS(144.52) EW(372.24) TEMP(122.0)
#43 MD(4098.00) Inc(9.6) Azm(67.7) TVD(4067.19) VS(-91.32) NS(150.54) EW(387.07) TEMP(123.8)
#44 MD(4193.00) Inc(8.1) Azm(66.4) TVD(4161.06) VS(-94.94) NS(156.23) EW(400.54) TEMP(127.4)
#45 MD(4289.00) Inc(8.2) Azm(68.4) TVD(4256.09) VS(-98.24) NS(161.46) EW(413.10) TEMP(125.6)
#46 MD(4381.00) Inc(8.8) Azm(74.0) TVD(4347.08) VS(-100.64) NS(165.81) EW(425.96) TEMP(127.4)
#47 MD(4476.00) Inc(8.1) Azm(72.5) TVD(4441.05) VS(-102.62) NS(169.83) EW(439.33) TEMP(129.2)
#48 MD(4572.00) Inc(9.5) Azm(69.0) TVD(4535.91) VS(-105.38) NS(174.70) EW(453.18) TEMP(131.0)
#49 MD(4666.00) Inc(8.7) Azm(69.1) TVD(4628.73) VS(-108.58) NS(180.02) EW(467.06) TEMP(132.8)
#50 MD(4760.00) Inc(8.9) Azm(72.0) TVD(4721.62) VS(-111.29) NS(184.80) EW(480.62) TEMP(134.6)
#51 MD(4856.00) Inc(8.2) Azm(74.7) TVD(4816.56) VS(-113.31) NS(188.90) EW(494.29) TEMP(138.2)
#52 MD(4950.00) Inc(8.2) Azm(73.4) TVD(4909.60) VS(-115.04) NS(192.58) EW(507.18) TEMP(140.0)
#53 MD(5045.00) Inc(8.4) Azm(71.9) TVD(5003.60) VS(-117.14) NS(196.68) EW(520.26) TEMP(138.2)
#54 MD(5140.00) Inc(7.8) Azm(72.5) TVD(5097.65) VS(-119.29) NS(200.77) EW(533.01) TEMP(129.2)
#55 MD(5235.00) Inc(6.8) Azm(71.7) TVD(5191.88) VS(-121.26) NS(204.47) EW(544.50) TEMP(129.2)
#56 MD(5330.00) Inc(6.4) Azm(68.5) TVD(5286.25) VS(-123.39) NS(208.18) EW(554.76) TEMP(132.8)
#57 MD(5426.00) Inc(5.2) Azm(69.5) TVD(5381.76) VS(-125.49) NS(211.67) EW(563.82) TEMP(138.2)
#58 MD(5520.00) Inc(4.6) Azm(70.2) TVD(5475.42) VS(-127.11) NS(214.43) EW(571.35) TEMP(141.8)
#59 MD(5615.00) Inc(5.0) Azm(64.8) TVD(5570.08) VS(-129.04) NS(217.49) EW(578.68) TEMP(145.4)
#60 MD(5710.00) Inc(6.0) Azm(55.8) TVD(5664.65) VS(-132.37) NS(222.04) EW(586.54) TEMP(147.2)
#61 MD(5806.00) Inc(5.3) Azm(57.9) TVD(5760.18) VS(-136.31) NS(227.22) EW(594.44) TEMP(150.8)
#62 MD(5901.00) Inc(4.4) Azm(59.3) TVD(5854.84) VS(-139.44) NS(231.41) EW(601.29) TEMP(149.0)
#63 MD(5996.00) Inc(3.3) Azm(61.1) TVD(5949.62) VS(-141.77) NS(234.59) EW(606.82) TEMP(150.8)
#64 MD(6092.00) Inc(2.4) Azm(60.8) TVD(6045.50) VS(-143.44) NS(236.91) EW(610.99) TEMP(156.2)
#65 MD(6188.00) Inc(1.7) Azm(67.7) TVD(6141.44) VS(-144.48) NS(238.43) EW(614.07) TEMP(158.0)
#66 MD(6283.00) Inc(1.4) Azm(68.0) TVD(6236.41) VS(-145.09) NS(239.40) EW(616.45) TEMP(159.8)
#67 MD(6378.00) Inc(1.3) Azm(76.9) TVD(6331.38) VS(-145.44) NS(240.08) EW(618.57) TEMP(161.6)
#68 MD(6475.00) Inc(1.1) Azm(89.7) TVD(6428.36) VS(-145.40) NS(240.33) EW(620.57) TEMP(163.4)
#69 MD(6571.00) Inc(0.6) Azm(105.9) TVD(6524.35) VS(-145.06) NS(240.20) EW(621.98) TEMP(163.4)
#70 MD(6613.00) Inc(0.3) Azm(160.8) TVD(6566.35) VS(-144.86) NS(240.03) EW(622.23) TEMP(165.2)
#71 MD(6664.00) Inc(1.4) Azm(170.2) TVD(6617.34) VS(-144.10) NS(239.29) EW(622.38) TEMP(140.0)
#72 MD(6727.00) Inc(7.3) Azm(185.0) TVD(6680.13) VS(-139.44) NS(234.54) EW(622.16) TEMP(136.4)
#73 MD(6758.00) Inc(7.6) Azm(186.3) TVD(6710.87) VS(-135.54) NS(230.54) EW(621.76) TEMP(140.0)
#74 MD(6790.00) Inc(11.1) Azm(193.2) TVD(6742.44) VS(-130.64) NS(225.44) EW(620.83) TEMP(143.6)
#75 MD(6822.00) Inc(15.2) Azm(190.6) TVD(6773.60) VS(-123.81) NS(218.31) EW(619.35) TEMP(141.8)
#76 MD(6854.00) Inc(20.4) Azm(187.6) TVD(6804.05) VS(-114.48) NS(208.66) EW(617.84) TEMP(143.6)
#77 MD(6886.00) Inc(25.1) Azm(186.3) TVD(6833.56) VS(-102.56) NS(196.38) EW(616.36) TEMP(143.6)
#78 MD(6919.00) Inc(30.4) Azm(182.4) TVD(6862.75) VS(-87.58) NS(181.06) EW(615.24) TEMP(145.4)
#79 MD(6950.00) Inc(36.2) Azm(177.9) TVD(6888.66) VS(-70.77) NS(164.06) EW(615.24) TEMP(145.4)
#80 MD(6982.00) Inc(40.0) Azm(173.1) TVD(6913.84) VS(-51.09) NS(144.40) EW(616.83) TEMP(143.6)
#81 MD(7014.00) Inc(42.8) Azm(170.8) TVD(6937.84) VS(-29.93) NS(123.45) EW(619.80) TEMP(147.2)
#82 MD(7045.00) Inc(46.5) Azm(169.5) TVD(6959.89) VS(-8.16) NS(101.99) EW(623.54) TEMP(149.0)
#83 MD(7077.00) Inc(50.6) Azm(168.9) TVD(6981.07) VS(15.81) NS(78.44) EW(628.03) TEMP(150.8)
#85 MD(7141.00) Inc(56.7) Azm(174.0) TVD(7018.56) VS(67.61) NS(27.31) EW(636.43) TEMP(150.8)
#87 MD(7204.00) Inc(62.3) Azm(175.9) TVD(7050.83) VS(121.58) NS(-26.57) EW(641.07) TEMP(150.8)
#89 MD(7267.00) Inc(66.9) Azm(177.4) TVD(7078.51) VS(177.89) NS(-83.06) EW(644.01) TEMP(152.6)
#94 MD(7422.00) Inc(80.7) Azm(180.4) TVD(7122.90) VS(324.71) NS(231.17) EW(646.51) TEMP(156.2)
#96 MD(7596.00) Inc(89.4) Azm(180.3) TVD(7133.35) VS(496.03) NS(-404.67) EW(644.78) TEMP(177.8)