

# COLUMBINE LOGGING

Scale: 5" / 100'  
Measured Depth Log

**Well Name** Merritt 6-66-9-0857BH

**Location** Merritt 06-66-09-0857BH

**State** Colorado

**County** Weld

**Country** USA

**Rig Number** Nabors M22

**API Number** 05-123-37734

**Region** DJ Basin

**Field** Wattenberg

**Spud Date** 12/5/2013

**Drilling Completed** 12/15/2013

**Surface Coordinates** NWNE S9-T6N-R66W

**Bottom Hole Coordinates** SESE Sec 09-T6N-R66W

**Ground Elevation** 4,824

**K.B. Elevation** 4,844'

**Logged Interval** 5,750' **To** 6,750'

**Total Depth** 11,790'

**Formation** Niobrara B

**Type of Drilling Fluid** LSND

## Operator

**Company** Bill Barrett Corp.

**Address** 1099 18th Street, Suite 2300  
Denver, CO 80202

## Geologist

**Name** John Roesink

**Company** Bill Barrett Corp

**Address** 1099 18th Street, Suite 2300  
Denver, CO 80202

## Other

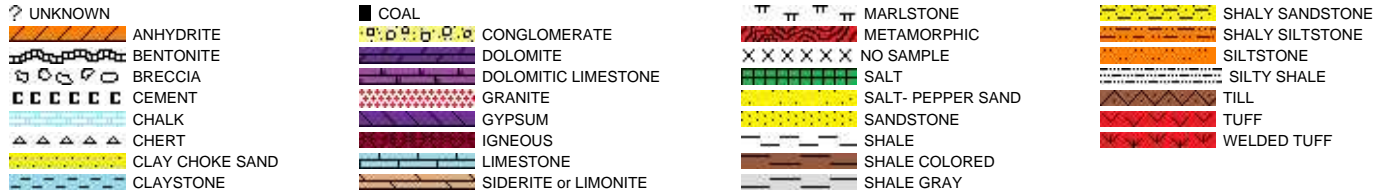
Kevin Donahue

Wellsite Geologist / Geosteering Specialist  
Columbine Logging Inc.

Rikki Witherspoon

Columbine Logging Inc.  
Wellsite Geologist

## Rock Types



## Accessories

### Fossils



FISH

FORAMINIFERA

FOSSIL

GASTROPOD

INOCERAMUS

OOLITE

OSTRACOD

PELECYPOD

PELLET

PISOLITE

PLANT REMAINS

PLANT SPORES

SCAPHOPOD

STROMATOPOROID

### Minerals

ANHYDRITIC

ARGILLACEOUS

ARGILLITE GRAIN

BENTONITE

BITUMENOUS SUBSTANCE

BRECCIA FRAGMENTS

CALCAREOUS

CARBONACEOUS FLAKES

CHTDK

CHTLT

COAL - THIN BEDS

DOLOMITIC

FELDSPAR

FERRUGINOUS PELLET

FERRUGINOUS

GLAUCONITE

GYPHIFEROUS

HEAVY MINERAL

KAOLIN

MARLSTONE

MICACEOUS

MINERAL CRYSTALS

NODULES

PHOSPHATE PELLETS

PYRITE

SALT CAST

SANDY

SILICEOUS

SILTY

TUFFACEOUS

ANHYDRITE STRINGER

BENTONITE STRINGER

COAL STRINGER

DOLOMITE STRINGER

GYPHUM STRINGER

LIMESTONE STRINGER

MARLSTONE (CALC) STRG

MARLSTONE (DOL) STRG

SANDSTONE STRINGER

SHALE STRINGER

SILTSTONE STRINGER

### Stringer

## Other Symbols

### Oil Show

DEAD

EVEN

QUESTIONABLE

SPOTTED STAINING

### Porosity

E EARTHY

FENESTRAL

FRACTURE

INTERCRYSTALLINE

INTEROOLITIC

MOLDIC

ORGANIC

PINPOINT

VUGGY

### Engineering

BIT CHANGE

CONNECTION (LEFT)

CONNECTION (RIGHT)

CONNECTION GAS

TRIP GAS

DOWN TIME GAS

CORE - LOST

CORE - RECOVERED

DST INTERVAL

FAULT

FORMATION TOP

GAS SHOW

OIL SHOW

MN DEPTH

MN DEPTH (RIGHT)

NORMAL FAULT

OVERTURNED STRATA

REVERSE FAULT

CASING

SIDEWALL CORE (LEFT)

SIDEWALL CORE (RIGHT)

SLIDE

SURVEY

DRILL STEM TEST

WIRELINE TESTED - LEFT

WIRELINE TESTED - RT

### Rounding

ANGULAR

ROUNDED

SUBANG

SUBRND

### Textures

BOUNDSTONE

CHALKY

CRYPTOXLN

E EARTHY

FINELYXLN

GRAINSTONE

L LITHOGRAPHIC

MX MICROXLN

MS MUDSTONE

PS PACKSTONE

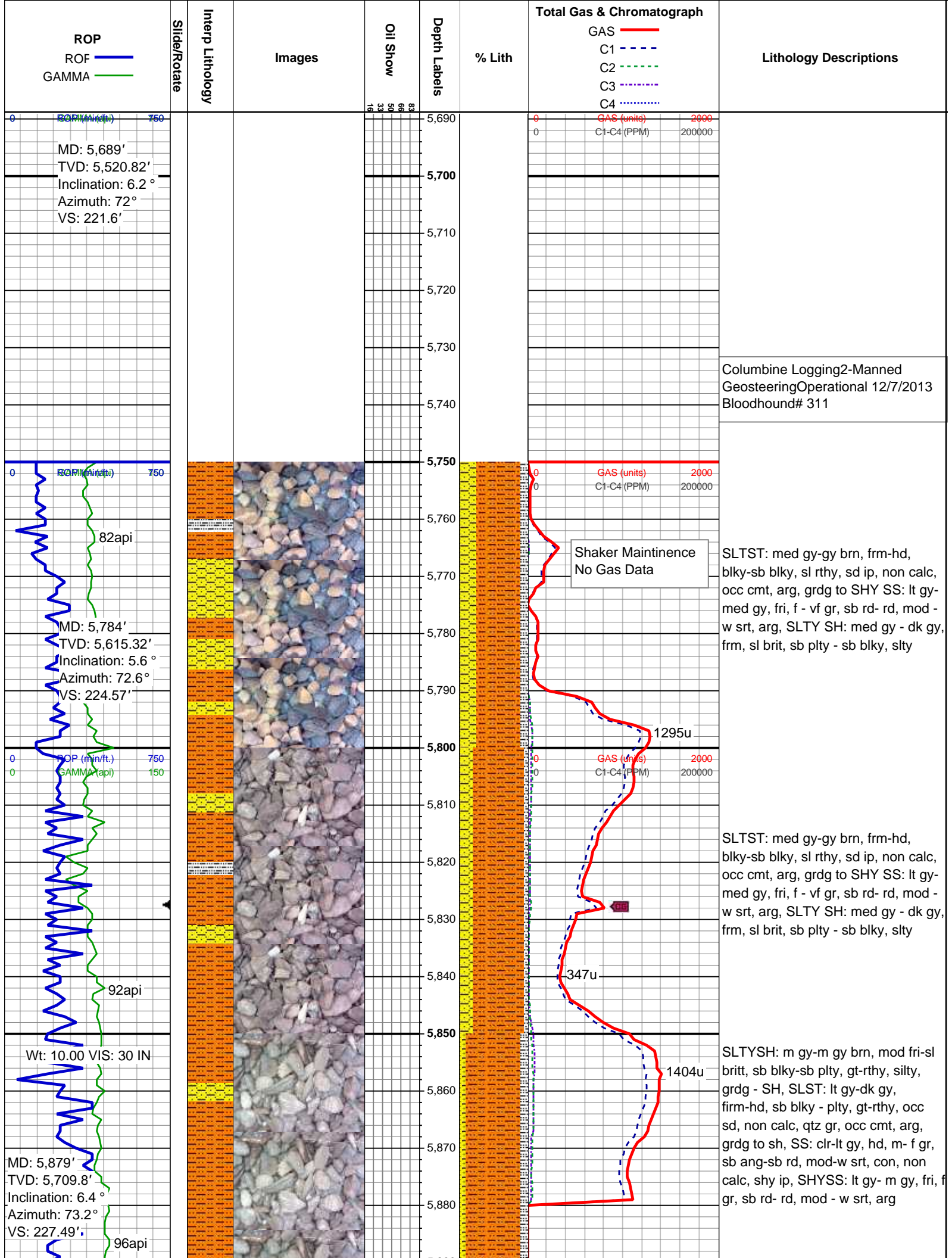
WS WACKSTONE

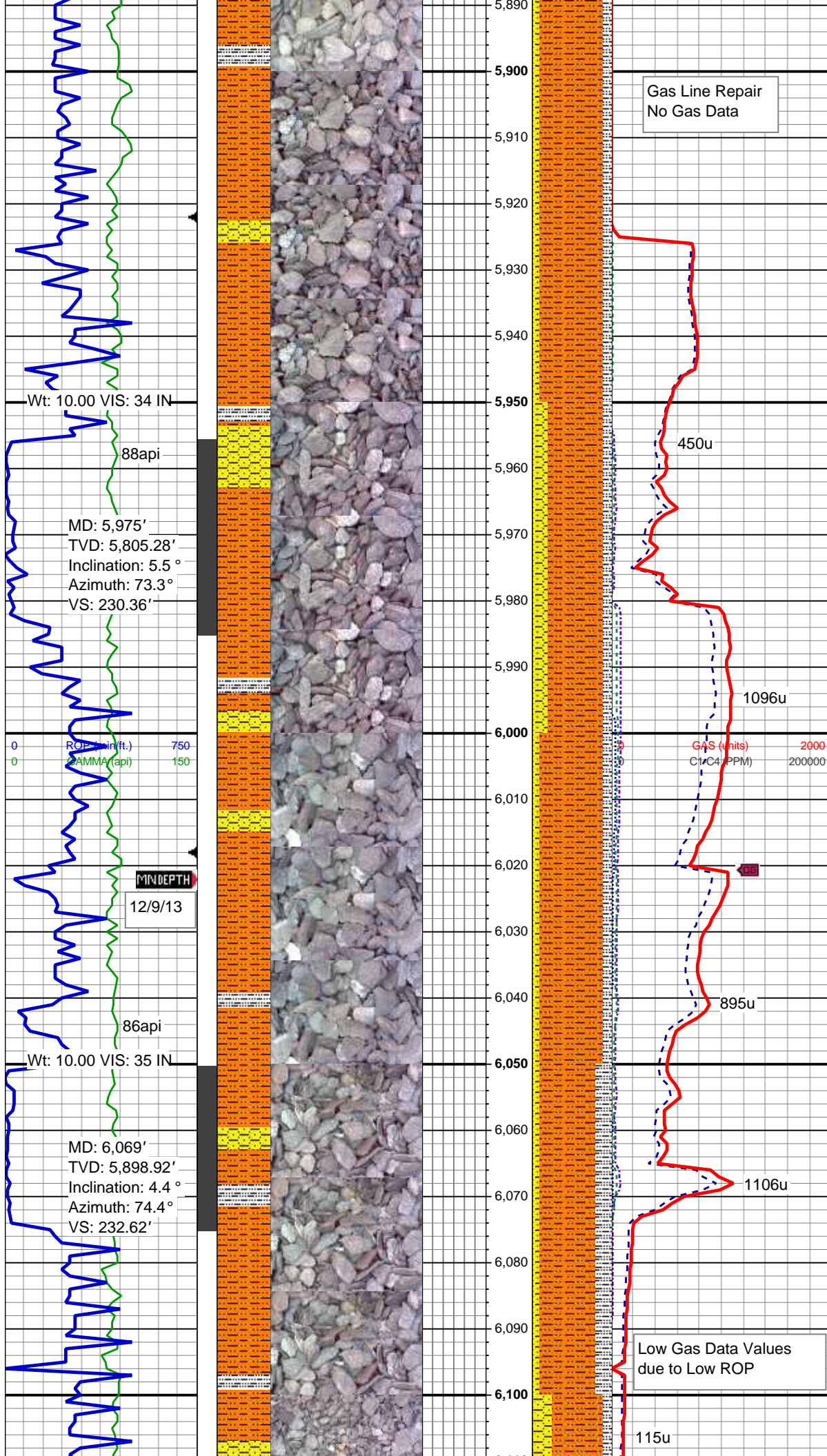
### Sorting

M MODERATE

P POOR

W WELL





Gas Line Repair  
No Gas Data

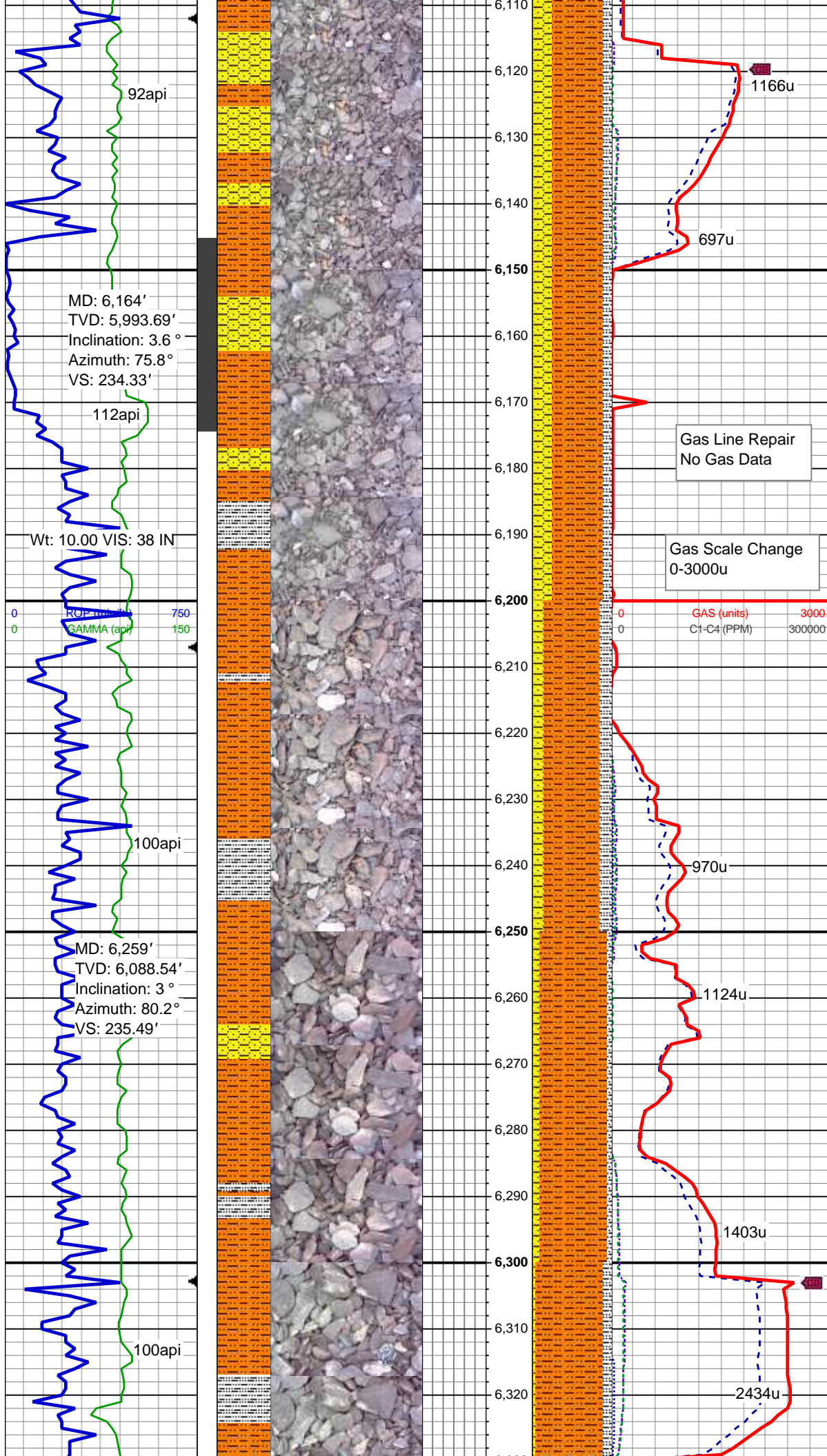
SLTYSH: m gy-m gy brn, mod fri-sl btritt, sb blk-y-sb plty, gt-rthy, silty, grdg - SH, SLST: lt gy-dk gy, firm-hd, sb blk-y - plty, gt-rthy, occ sd, non calc, qtz gr, occ cmt, arg, grdg to sh, SS: clr-lt gy, hd, m- f gr, sb ang-sb rd, mod-w srt, con, non calc, shy ip, SHYSS: lt gy- m gy, fri, f gr, sb rd- rd, mod - w srt, arg

SLTYSH: m gy-m gy brn, mod fri-sl btritt, sb blk-y-sb plty, gt-rthy, silty, grdg - SH, SLST: lt gy-dk gy, firm-hd, sb blk-y - plty, gt-rthy, occ sd, non calc, qtz gr, occ cmt, arg, grdg to sh, SS: clr-lt gy, hd, m- f gr, sb ang-sb rd, mod-w srt, con, non calc, shy ip, SHYSS: lt gy- m gy, fri, f gr, sb rd- rd, mod - w srt, arg

SLTYSH: m gy-m gy brn, mod fri-sl btritt, sb blk-y-sb plty, gt-rthy, silty, grdg - SH, SLST: lt gy-dk gy, firm-hd, sb blk-y - plty, gt-rthy, occ sd, non calc, qtz gr, occ cmt, arg, grdg to sh, SS: clr-lt gy, hd, m- f gr, sb ang-sb rd, mod-w srt, con, non calc, shy ip, SHYSS: lt gy- m gy, fri, f gr, sb rd- rd, mod - w srt, arg

SLTYSH: m gy-m gy brn, mod fri-sl btritt, sb blk-y-sb plty, grt-rthy, non calc, silty; SLST: lt gy-dk gy, sft-frm, sb blk-y - plty, sl aren, arg, non calc, grdg to sh; SHYSS: lt gy- m gy, fri, f-vf gr, sb rd- rd, mod - w srt, arg, w/ occ clr-lt gy SS

Low Gas Data Values  
due to Low ROP



SLTYSH: m gy-m gy brn, mod fri-sl  
britt, sb blk-y-sb plty, grt-rthy, non  
calc, silty; SLST: lt gy-dk gy, sft-frn,  
sb blk-y - plty, sl aren, arg, non calc,  
grdg to sh; SHYSS: lt gy- m gy, fri,  
f-vf gr, sb rd- rd, mod - w srt, arg, w/  
occ clr-lt gy SS

SLTYSH: m gy-m gy brn, mod fri-sl  
britt, sb blk-y-sb plty, grt-rthy, non  
calc, silty; SLST: lt gy-dk gy, sft-frn,  
sb blk-y - plty, sl aren, arg, non calc,  
grdg to sh; SHYSS: lt gy- m gy, fri,  
f-vf gr, sb rd- rd, mod - w srt, arg, w/  
occ clr-lt gy SS

SLTYSH: m gy-m gy brn, mod fri-sl  
britt, sb blk-y-sb plty, grt-rthy, non  
calc, silty; SLST: lt gy-dk gy, sft-frn,  
sb blk-y - plty, sl aren, arg, non calc,  
grdg to sh; SHYSS: lt gy- m gy, fri,  
f-vf gr, sb rd- rd, mod - w srt, arg, w/  
occ clr-lt gy SS

SLTYSH: m gy-m gy brn, mod fri-sl  
britt, sb blk-y-sb plty, grt-rthy, non  
calc, silty; SLST: lt gy-dk gy, sft-frn,  
sb blk-y - plty, sl aren, arg, non calc,  
grdg to sh; SHYSS: lt gy- m gy, fri,  
f-vf gr, sb rd- rd, mod - w srt, arg, w/  
occ clr-lt gy SS

SLTYSH: m gy-m gy brn, mod fri-sl  
britt, sb blk-y-sb plty, grt-rthy, non  
calc, silty; SLST: lt gy-dk gy, sft-frn,  
sb blk-y - plty, sl aren, arg, non calc,  
grdg to sh; SHYSS: lt gy- m gy, fri,  
f-vf gr, sb rd- rd, mod - w srt, arg, w/  
occ clr-lt gy SS

