



Scale: 5" / 100'
Measured Depth Log

Well Name Merritt 6-66-9-0857BH HZ

Location Merritt 06-66-09-0857BH

State Colorado

County Weld

Country USA

API Number 05-123-37734

Region DJ Basin

Field Wattenberg

Spud Date 12/5/2013

Drilling Completed 12/15/2013

Surface Coordinates NWNE S9-T6N-R66W

Bottom Hole Coordinates SESE Sec 09-T6N-R66W

Ground Elevation 4,824

K.B. Elevation 4,844'

Logged Interval 6,748' To 11790'

Total Depth 11790'

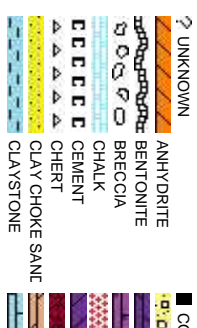
Formation Niobrara B

Type of Drilling Fluid LSND

Company Bill Barrett Corp
Address 1099 18th Street
Denver, CO 802

Name John Roesink
Company Bill Barrett Corp
Address 1099 18th Street
Denver, CO 802

Kevin Donahue
Rikki Witherspoon



Operator

it, Suite 2300
202

Geologist

t, Suite 2300
202

Other

Columbine Logging Inc.
Columbine Logging Inc.

Rock Types

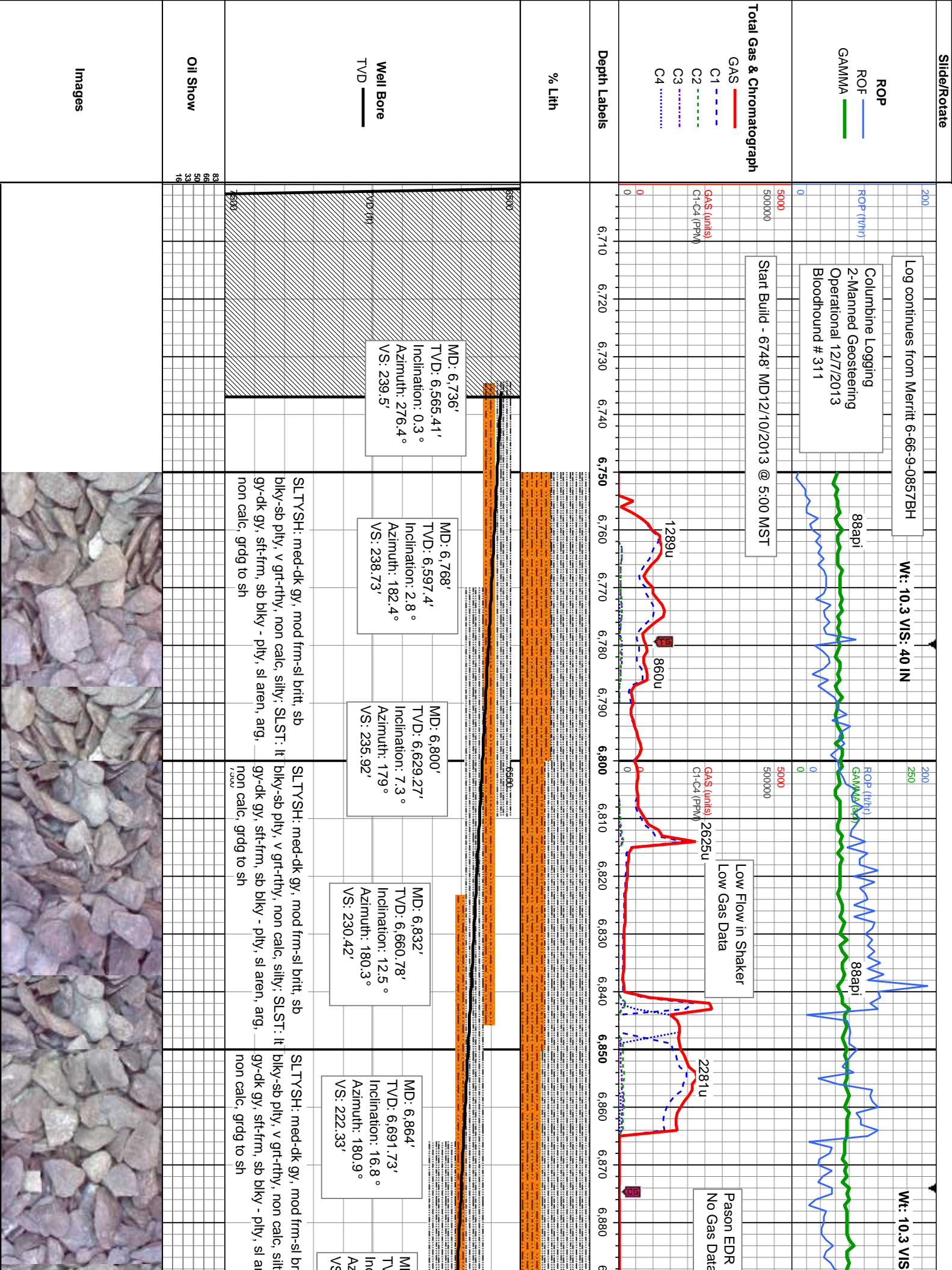
CONGLOMERATE	MARLSTONE	SHALY SANDSTONE
DOLOMITE	METAMORPHIC	SHALY SILTSTONE
DOLOMITIC LIMESTONE	NO SAMPLE	SILTSTONE
GRANITE	SALT	SILTSTONE
GYP SUM	SANDSTONE	TUFF
IGNEOUS	SALT-PEPPER SAND	WELDED TUFF
SIDERITE or LIMONITE	SHALE	
LIMESTONE	SHALE COLORED	
	SHALE GRAY	

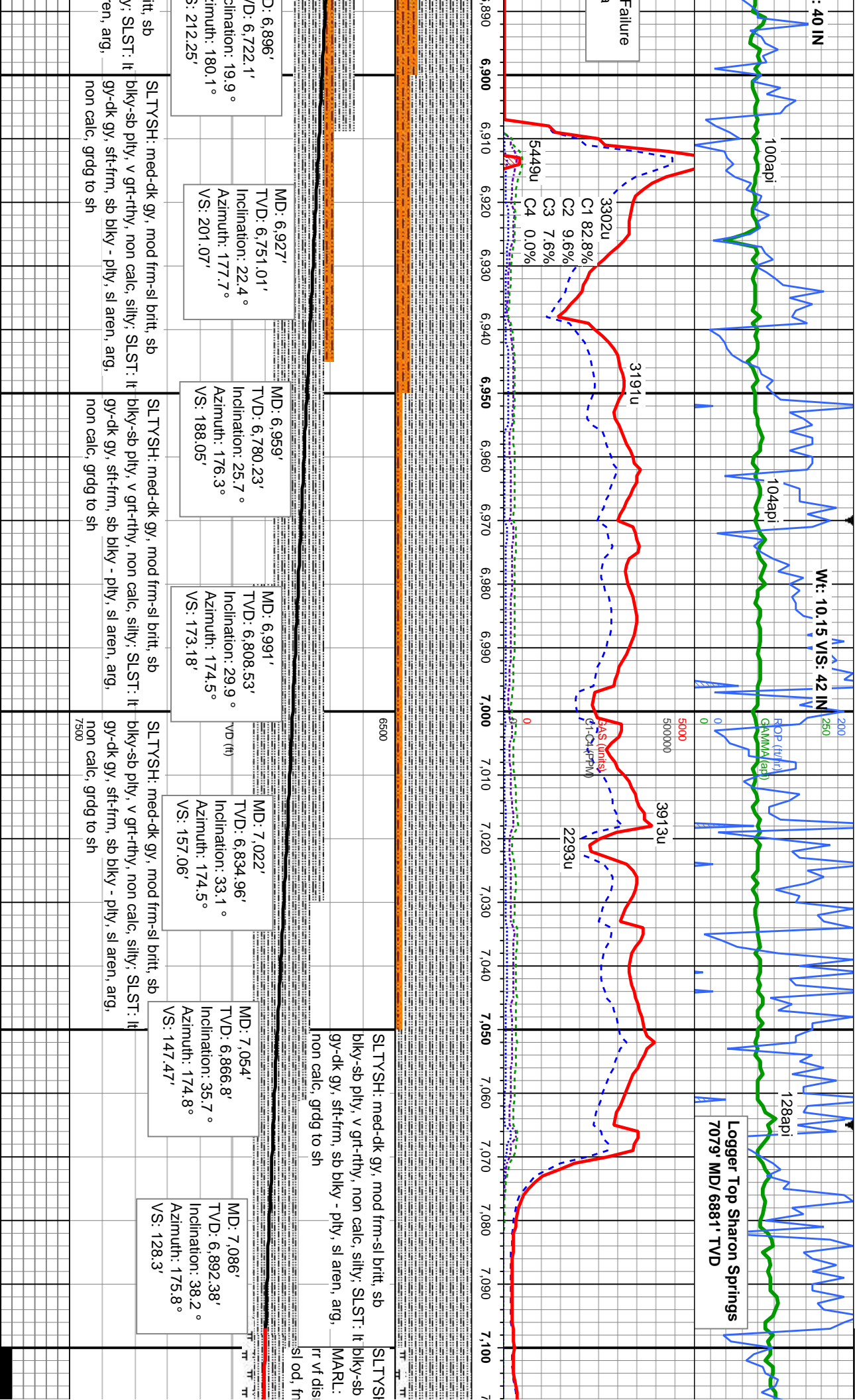
Accessories

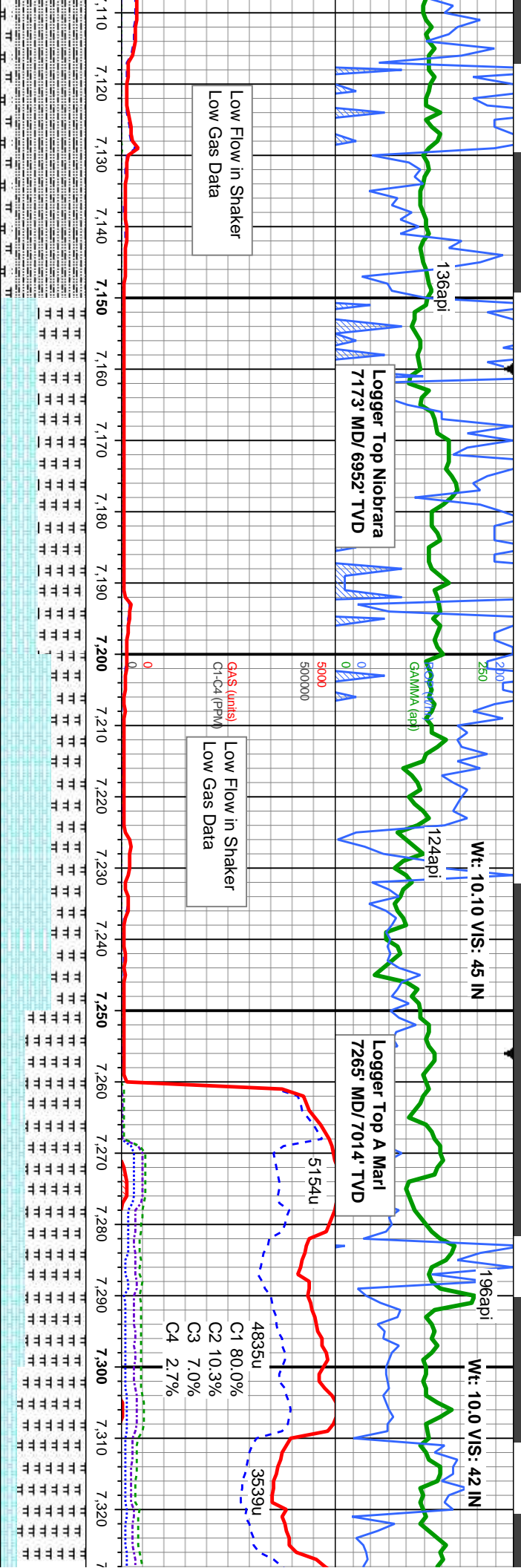
Fossils	GASTROPOD	ARGILLITE GRAIN	HEAVY MINERAL
INOCERAMUS	B BENTONITE	K KAOLIN	ANHYDRITE STRINGER
ALGAE	O OOLITE	BITUMENOUS SUBSTANCE	BENTONITE STRINGER
AMPHIPORA	O OSTRACOD	BRECCIA FRAGMENTS	COAL STRINGER
BELEMNITE	P PELECYPOD	CALCAREOUS	DOLOMITIC STRINGER
BIOCLASTIC	P PELLET	CARBONACEOUS FLAKES	GYPSUM STRINGER
BRACHIOPOD	P PISOLITE	CHRTD	LIMESTONE STRINGER
BRYOZOA	P PLANT REMAINS	COAL - THIN BEDS	MARLSTONE (CALC) STRG
CEPHALOPOD	P PLANT SPORES	DOLOMITIC	MARLSTONE (DOL) STRG
CORAL	S SCAPHOPOD	F FELDSPAR	SANDSTONE STRINGER
CRINOID	S STROMATOPOROID	F FERRUGINOUS PELLET	SHALE STRINGER
ECHINOID		S SILTY	SILTSTONE STRINGER
FISH	Minerals	F FERRUGINOUS	T TUFFACEOUS
FORAMINIFERA	A ANHYDRITIC	G GLAUCONITE	
F FOSSIL	A ARGILLACEOUS	G GYPSIFEROUS	Stringer

Other Symbols

Oil Show	P PINPOINT	DST INTERVAL	WIRELINE TESTED - LEFT	E EARTHY
V VUGGY	FAULT	WIRELINE TESTED - RT	FINELY XLN	
D DEAD	FORMATION TOP	DRILL STEM TEST	G GRAINSTONE	
E EVEN	GAS SHOW	MN DEPTH	L LITHOGRAPHIC	
Q QUESTIONABLE	BIT	OIL SHOW	M MICRO XLN	
S SPOTTED STAINING	C CONNECTION (UP)	MN DEPTH UP	M MUDSTONE	
C CONNECTION (DOWN)	MN DEPTH (DOWN)	A ANGULAR	P PACKSTONE	
Porosity	C CONNECTION GAS	N NORMAL FAULT	R ROUNDED	W WACKESTONE
E EARTHY	C CONNECTION GAS (LEFT)	O OVERTURNED STRATA	S SUBANG	
F FENESTRAL	T TRIP GAS	R REVERSE FAULT	S SUBRND	
F FRACTURE	T TRIP GAS (LEFT)	C CASING		Sorting
I INTERCRYSTALLINE	D DOWN TIME GAS	S SIDEWALL CORE (LEFT)	M MODERATE	
I INTERCRYSTALLINE	D DOWN TIME GAS (LEFT)	S SIDEWALL CORE (RIGHT)	P POOR	
M MOLDIC	C CORE - LOST	S SLIDE	W WELL	
O ORGANIC	C CORE - RECOVERED	S SURVEY	C CRYPTOXLN	







Low Flow in Shaker
Low Gas Data

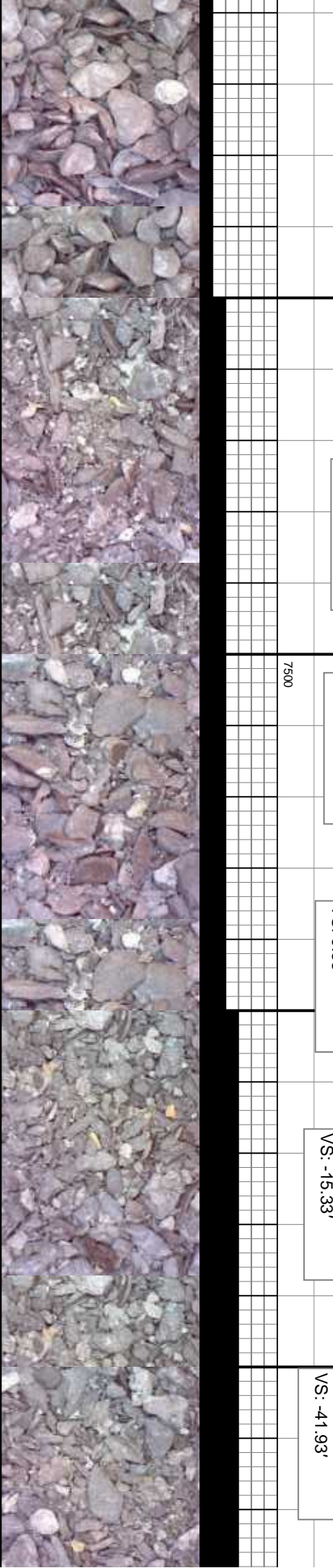
Logger Top Niobrara
7173' MD/ 6952' TVD

Low Flow in Shaker
Gas (units)
C1-C4 (PPM)

Logger Top A Marl
7265' MD/ 7014' TVD

C1 80.0%
C2 10.3%
C3 7.0%
C4 2.7%

MD: 7,117' TVD: 6,910.9' Inclination: 40.5° Azimuth: 176.2° VS: 99.76'	MD: 7,149' TVD: 6,934.79' Inclination: 42.9° Azimuth: 177.6° VS: 78.51'	MD: 7,181' TVD: 6,957.79' Inclination: 45.2° Azimuth: 178.8° VS: 56.27'	MD: 7,213' TVD: 6,980.22' Inclination: 45.8° Azimuth: 178.8° VS: 33.45'	MD: 7,245' TVD: 7,004.79' Inclination: 49.4° Azimuth: 177.9° VS: 9.83'	MD: 7,277' TVD: 7,021.53' Inclination: 54.4° Azimuth: 178.9° VS: -15.33'	MD: 7,309' TVD: 7,039.31' Inclination: 58.1° Azimuth: 180° VS: -41.93'
MD: 7,117' TVD: 6,910.9' Inclination: 40.5° Azimuth: 176.2° VS: 99.76'	MD: 7,149' TVD: 6,934.79' Inclination: 42.9° Azimuth: 177.6° VS: 78.51'	MD: 7,181' TVD: 6,957.79' Inclination: 45.2° Azimuth: 178.8° VS: 56.27'	MD: 7,213' TVD: 6,980.22' Inclination: 45.8° Azimuth: 178.8° VS: 33.45'	MD: 7,245' TVD: 7,004.79' Inclination: 49.4° Azimuth: 177.9° VS: 9.83'	MD: 7,277' TVD: 7,021.53' Inclination: 54.4° Azimuth: 178.9° VS: -15.33'	MD: 7,309' TVD: 7,039.31' Inclination: 58.1° Azimuth: 180° VS: -41.93'



ROP Scale Change
0-750 ft/hr

12/12-13/2013

WT: 9.0 VIS: 32 IN

WT: 9

WE: 9.8 VIS: 43 IN

88api

104api

79api

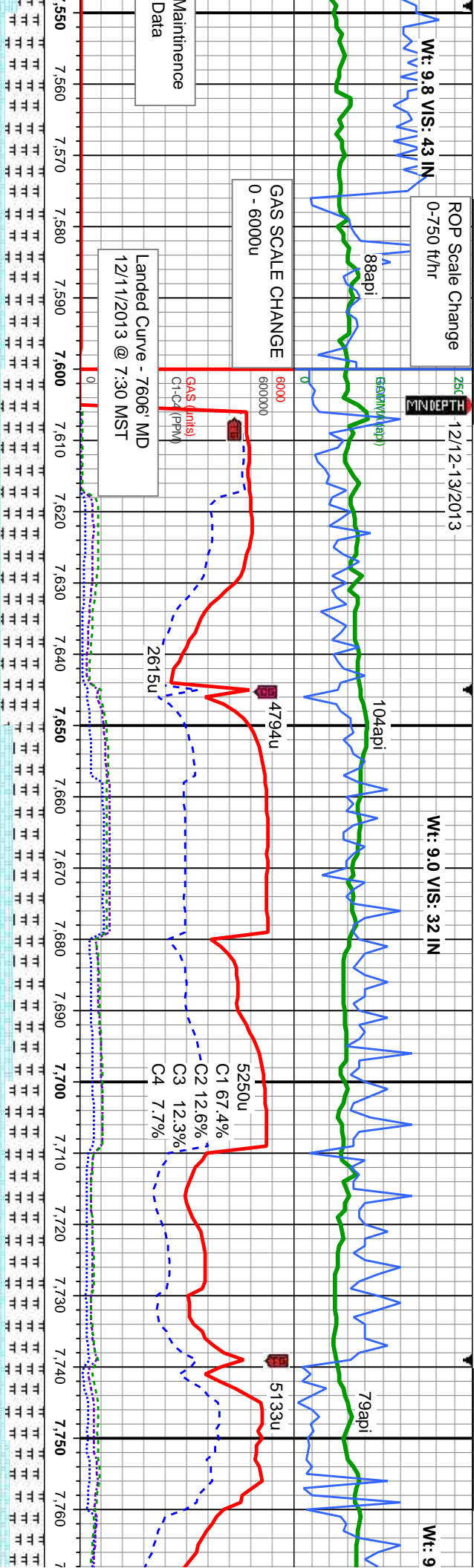
GAS SCALE CHANGE
0 - 6000u

Maintenance
Data

Landed Curve - 7606 MD
12/11/2013 @ 7:30 MST

GAS (units)
C1-C4 (PPM)

5250u
C1 67.4%
C2 12.6%
C3 12.3%
C4 7.7%



CHK: lt-med gy, sme brn, lam, mot, vsft-sft,
sbply-biky, v calc, cpxl, intbd w/MARL:
med-dk gy, mod, sft-v sft, sbply-pty, fir- brit,
v calc; v bri bl mod fast mky-stmg cut, sl od,
fnt yel bl flor res, v fnt tan vis light ring

CHK: lt-med gy, sme brn, lam, mot, vsft-sft,
sbply-biky, v calc, cpxl, intbd w/MARL:
med-dk gy, mod, sft-v sft, sbply-pty, fir- brit,
v calc; v bri bl mod fast mky-stmg cut, sl od,
fnt yel bl flor res, v fnt tan vis light ring

CHK: lt-med gy, sme brn, lam, mot, vsft-sft,
sbply-biky, v calc, cpxl, intbd w/MARL:
med-dk gy, mod, sft-v sft, sbply-pty, fir- brit,
v calc; v bri bl mod fast mky-stmg cut, sl od,
fnt yel bl flor res, v fnt tan vis light ring

CHK: lt-med gy, sme brn, lam, mot, vsft-sft,
sbply-biky, v calc, cpxl, intbd w/MARL:
med-dk gy, mod, sft-v sft, sbply-pty, fir- brit,
v calc; v bri bl mod fast mky-stmg cut, sl od,
fnt yel bl flor res, v fnt tan vis light ring

CHK: med gy - r
vsft-sft, sbply-b
intbd w/MARL: r
sbply-pty, brit,
mky-stmg cut, s
tan vis light ring

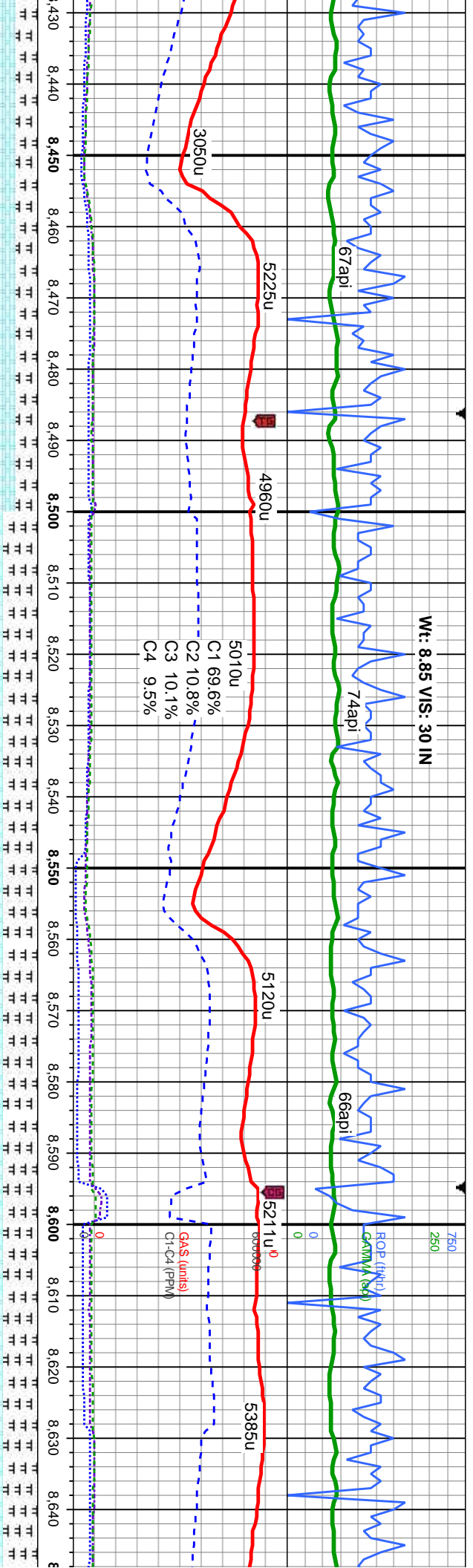
MD: 7,563'
TVD: 7,117.82'
Inclination: 87.4°
Azimuth: 182.5°
VS: -279.35'

MD: 7,662'
TVD: 7,120.24'
Inclination: 89.8°
Azimuth: 182.6°
VS: -378.21'

MD: 7,694'
TVD: 7,120.18'
Inclination: 90.4°
Azimuth: 182.3°
VS: -410.19'

7500

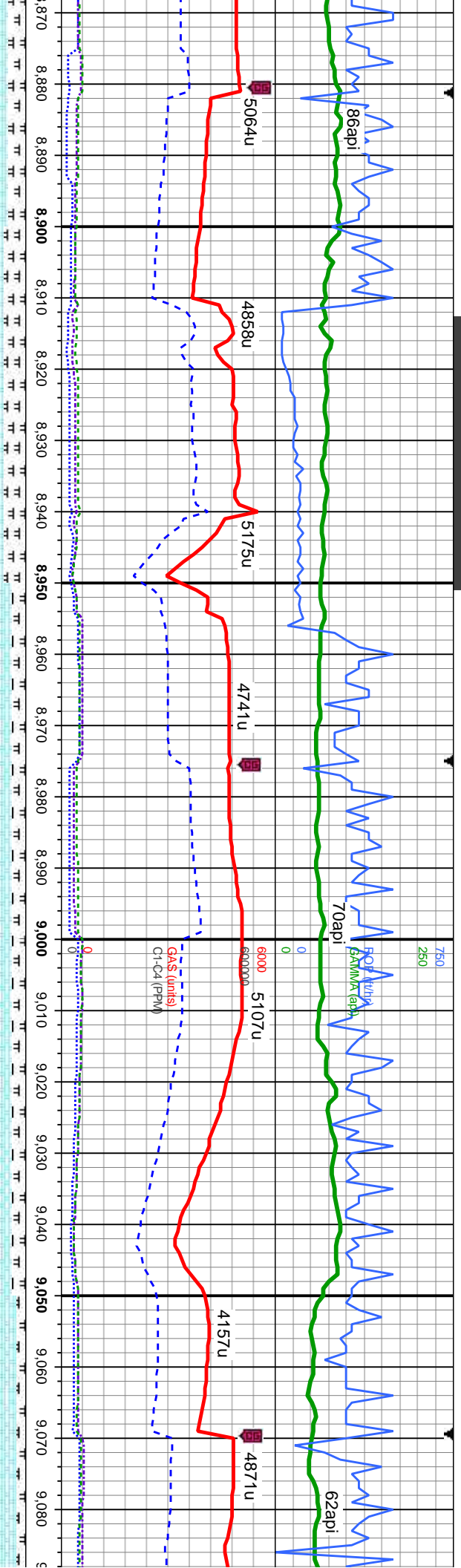




n, occ lt gy, mot, cpptxl, w/ tr fos, gy, stri, sft-firm, col mod fast bl flr res, v fnt	CHK: med gy - med gy brn, occ lt gy, mot, vsft-sft, sbply-biky, v calc, cpptxl, w/ tr fos, intbd w/ MARL: med - dk gy, stri, sft-firm, sbply-pily, brt, arg: v bri bl mod fast mky-stng cut, sl od, fnt yel bl flr res, v fnt tan vis light ring	CHK: lt - med gy, occ med gy brn, mot, vsft-sft, sbply-biky, v calc, cpptxl, w/ tr fos, intbd w/ MARL: med - dk gy, stri, sft-firm, sbply-pily, brt, arg: v bri bl mod fast mky-stng cut, sl od, fnt yel bl flr res, v fnt tan vis light ring	CHK: lt - med gy, occ med gy brn, mot, vsft-sft, sbply-biky, v calc, cpptxl, w/ tr fos, intbd w/ MARL: med - dk gy, stri, sft-firm, sbply-pily, brt, arg: v bri bl mod fast mky-stng cut, sl od, fnt yel bl flr res, v fnt tan vis light ring	6CHK: lt - med gy, occ med gy brn, mot, vsft-sft, sbply-biky, v calc, cpptxl, w/ tr fos, intbd w/ MARL: med - dk gy, stri, sft-firm, sbply-pily, brt, arg: v bri bl mod fast mky-stng cut, sl od, fnt yel bl flr res, v fnt tan vis light ring
TVD (ft)				

MD: 8.454' TVD: 7,124.42' Inclination: 90.1 ° Azimuth: 175.3° VS: -1,169.61'	MD: 8.549' TVD: 7,124.09' Inclination: 90.3 ° Azimuth: 175.7° VS: -1,264.31'	MD: 8.645' TVD: 7,123 Inclination: : Azimuth: 17 VS: -1,359.9
--	--	---

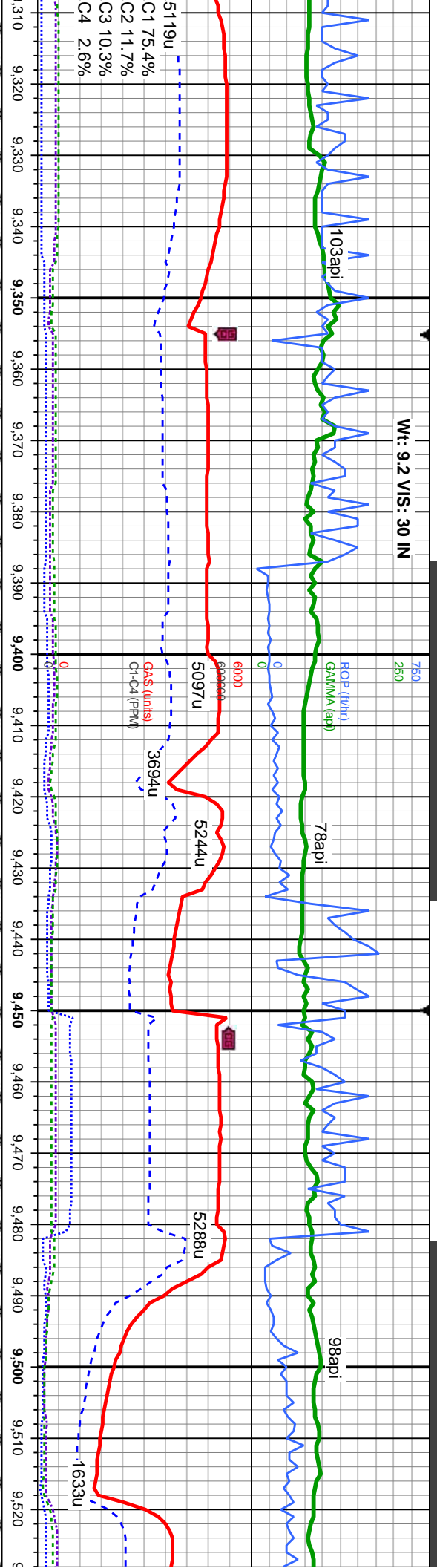




7, occ med gy brn, mot, kly, v calc, crptxl, w/ tr fos, med - dk gy, stri, sft-frm, arg, v bri bl mod fast od, fnt yel bl flr res, v fnt	CHK: It - med gy, occ med gy brn, mot, vsft-sft, sbply-bkly, v calc, crptxl, w/ tr fos, intbd w/ MARL: med - dk gy, stri, sft-frm, sbply-ply, brit, arg: v bri bl mod fast mky-stmg cut, sl od, fnt yel bl flr res, v fnt tan vis light ring	CHK: It - med gy, occ med gy brn, mot, vsft-sft, sbply-bkly, v calc, crptxl, w/ tr fos, intbd w/ MARL: med - dk gy, stri, sft-frm, sbply-ply, brit, arg: v bri bl mod fast mky-stmg cut, sl od, fnt yel bl flr res, v fnt tan vis light ring	6 ⁵ CHK: It - med gy, occ med gy brn, mot, vsft-sft, sbply-bkly, v calc, crptxl, w/ tr fos, intbd w/ MARL: med - dk gy, stri, sft-frm, sbply-ply, brit, arg: v bri bl mod fast mky-stmg cut, sl od, fnt yel bl flr res, v fnt tan vis light ring	CHK: It - med gy, occ med gy brn, mot, vsft-sft, sbply-bkly, v calc, crptxl, w/ tr fos, intbd w/ MARL: med - dk gy, stri, sft-frm, sbply-ply, brit, arg: v bri bl mod fast mky-stmg cut, sl od, fnt yel bl flr res, v fnt tan vis light ring
--	---	---	--	---

MD: 8,929' TVD: 7,118.47' Inclination: 91.5 ° Azimuth: 176.4 ° VS: -1,643.01'	MD: 9,024' TVD: 7,115.57' Inclination: 92 ° Azimuth: 176.3 ° VS: -1,737.78'
---	---



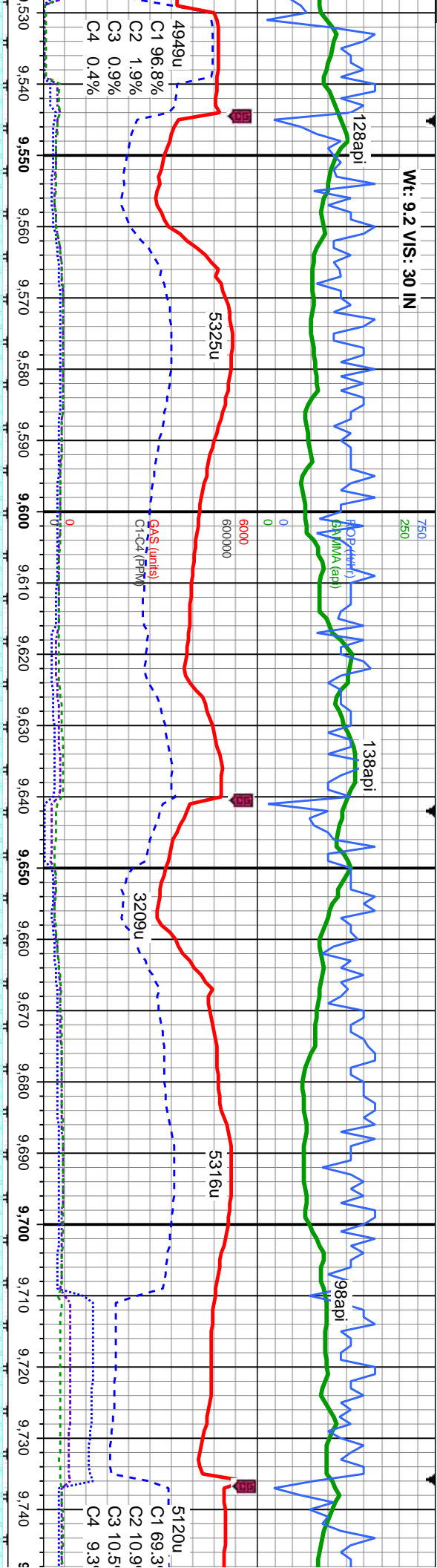


sblpy-biky, v calc, crptxl, w/ tr fos, MARL; v bri bl mod fast mky-stmg cut, fnt yel bl flor res, v fnt tan vis light ring	CHK: It - med gy, occ med gy brn, mot, vsft-sft, sblpy-biky, v calc, crptxl, w/ tr fos, intbd w/ MARL; v bri bl mod fast mky-stmg cut, sl od, fnt yel bl flor res, v fnt tan vis light ring	CHK: It - med gy, occ med gy brn, mot, vsft-sft, sblpy-biky, v calc, crptxl, w/ tr fos, intbd w/ MARL; v bri bl mod fast mky-stmg cut, sl od, fnt yel bl flor res, v fnt tan vis light ring	CHK: It - med gy, occ med gy brn, mot, vsft-sft, sblpy-biky, v calc, crptxl, w/ tr fos, intbd w/ MARL; v bri bl mod fast mky-stmg cut, sl od, fnt yel bl flor res, v fnt tan vis light ring	CHK: It - med gy, occ med gy brn, mot, vsft-sft, sblpy-biky, v calc, crptxl, w/ tr fos, intbd w/ MARL; v bri bl mod fast mky-stmg cut, sl od, fnt yel bl flor res, v fnt tan vis light ring
--	---	---	---	---

10'	MD: 9,405'	MD: 9,500'
102.59'	TVD: 7,100.19'	TVD: 7,099.94'
on: 91.4 °	Inclination: 91.5 °	Inclination: 88.8 °
: 176.8 °	Azimuth: 178.1 °	Azimuth: 180.4 °
22.79'	VS: -2.117.67'	VS: -2.212.64'



WE: 9.2 VIS: 30 IN

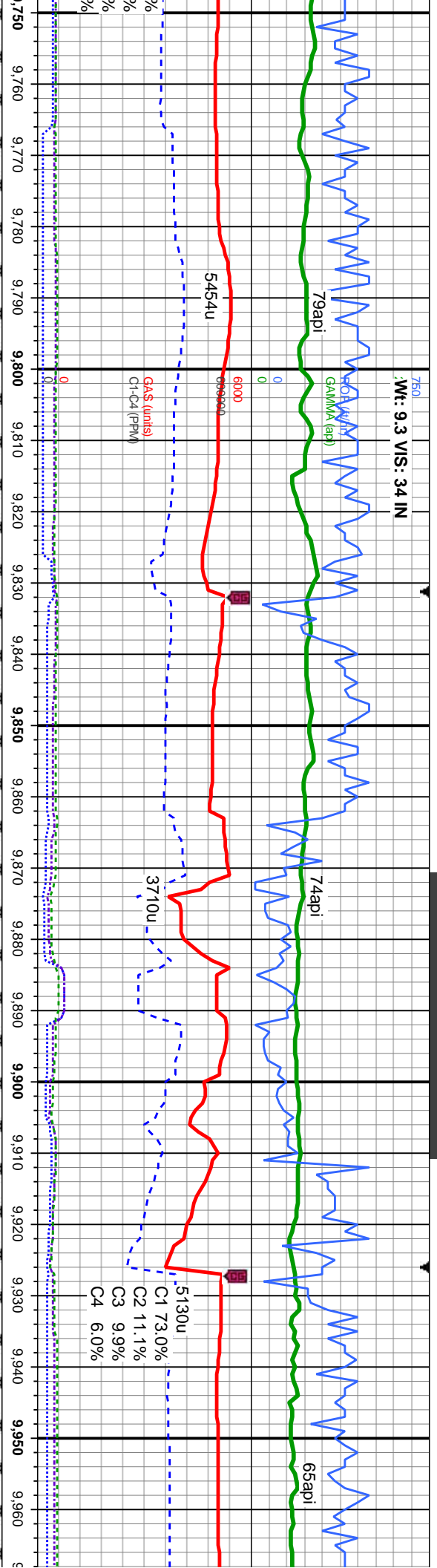


d gy brn, mot, cpptxl, w/ tr fos, mod fast mky-stmg cut, s, v frt tan vis light ring	CHK: It - med gy, occ med gy brn, mot, vsft-sft, sbply-biky, v calc, cpptxl, w/ tr fos, intbd w/ MARL; v bri bl mod fast mky-stmg cut, sl od, frt yel bl flor res, v frt tan vis light ring	CHK: It - med gy, occ med gy brn, mot, vsft-sft, sbply-biky, v calc, cpptxl, w/ tr fos, intbd w/ MARL; v bri bl mod fast mky-stmg cut, sl od, frt yel bl flor res, v frt tan vis light ring	CHK: It - med gy, occ med gy brn, mot, vsft-sft, sbply-biky, v calc, cpptxl, w/ tr fos, intbd w/ MARL; v bri bl mod fast mky-stmg cut, sl od, frt yel bl flor res, v frt tan vis light ring	CHK: It - med gy, occ med gy brn, mot, vsft-sft, sbply-biky, v calc, cpptxl, w/ tr fos, intbd w/ MARL; v bri bl mod fast mky-stmg cut, sl od, frt yel bl flor res, v frt tan vis light ring
--	---	---	---	---

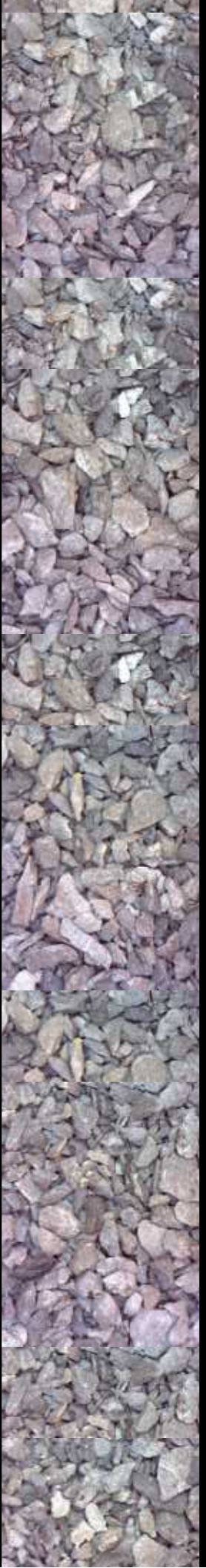
MD: 9,596'
TVD: 7,102.87'
Inclination: 87.7°
Azimuth: 180.4°
VS: -2,308.6'

MD: 9,691'
TVD: 7,106.35'
Inclination: 88.1°
Azimuth: 179.8°
VS: -2,403.53'





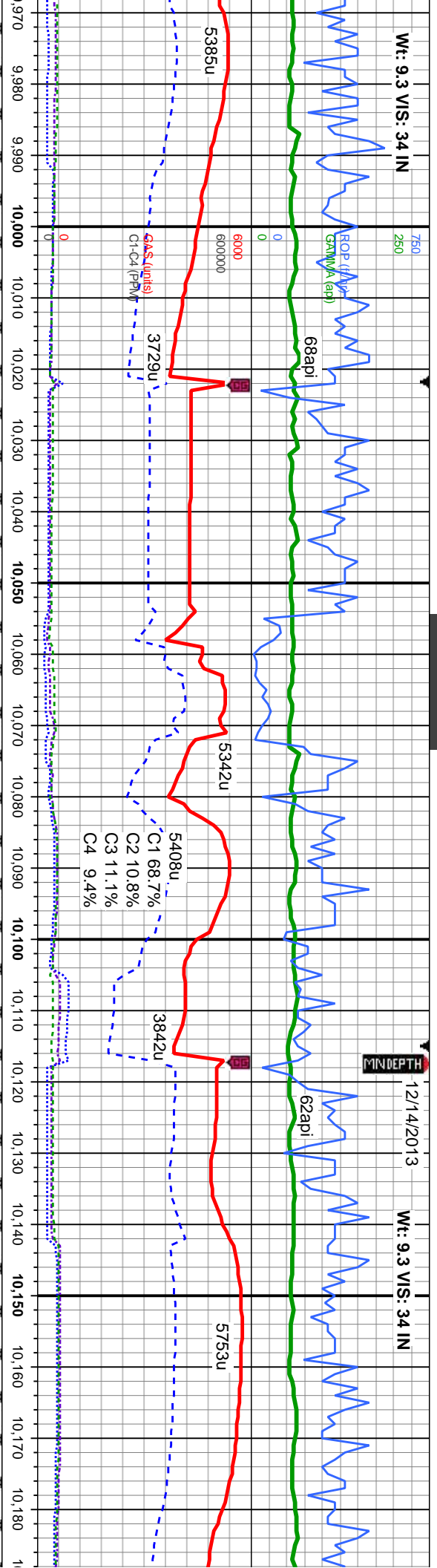
CHK: It - med gy, occ med gy brn, mot, vsft-sft, sbply-blky, v calc, crptxl, w/ tr fos, intbd w/ MARL: v bri bl mod fast mky-stmg cut, sl od, frt yel bl flor res, v frt tan vis light ring	CHK: It - med gy, occ med gy brn, mot, vsft-sft, sbply-blky, v calc, crptxl, w/ tr fos, intbd w/ MARL: v bri bl mod fast mky-stmg cut, sl od, frt yel bl flor res, v frt tan vis light ring	CHK: It - med gy, occ med gy brn, mot, vsft-sft, sbply-blky, v calc, crptxl, w/ tr fos, intbd w/ MARL: v bri bl mod fast mky-stmg cut, sl od, frt yel bl flor res, v frt tan vis light ring	CHK: It - med gy, occ med gy brn, mot, vsft-sft, sbply-blky, v calc, crptxl, w/ tr fos, intbd w/ MARL: v bri bl mod fast mky-stmg cut, sl od, frt yel bl flor res, v frt tan vis light ring	CHK: It - med gy, occ med gy brn, mot, vsft-sft, sbply-blky, v calc, crptxl, w/ tr fos, intbd w/ MARL: v bri bl mod fast mky-stmg cut, sl od, frt yel bl flor res, v frt tan vis light ring
TVD (ft)	TVD (ft)			
MD: 9,786' TVD: 7,109.09' Inclination: 88.6 ° Azimuth: 179 ° VS: -2,498.49'	MD: 9,881' TVD: 7,110.99' Inclination: 89.1 ° Azimuth: 178.9 ° VS: -2,593.45'			
7500				



Wt: 9.3 VIS: 34 IN

12/14/2013

Wt: 9.3 VIS: 34 IN



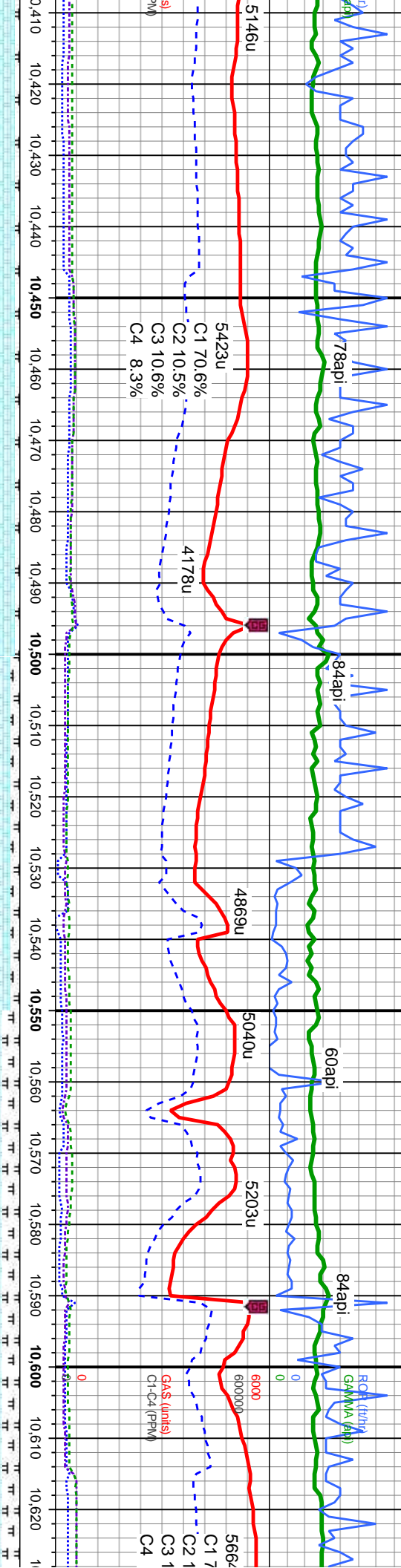
occ med gy brn, mot, vstf-sft, sbply-biky, v calc, crpxl, w/ tr fos, v bri bl mod fast mky-stmg bl flor res, v frt tan vis light	CHK: It - med gy, occ med gy brn, mot, vstf-sft, sbply-biky, v calc, crpxl, w/ tr fos, intbd w/ MARL, v bri bl mod fast mky-stmg cut, sl od, frt yel bl flor res, v frt tan vis light ring	CHK: It - med gy, occ med gy brn, mot, vstf-sft, sbply-biky, v calc, crpxl, w/ tr fos, intbd w/ MARL, v bri bl mod fast mky-stmg cut, sl od, frt yel bl flor res, v frt tan vis light ring	CHK: It - med gy, occ med gy brn, mot, vstf-sft, sbply-biky, v calc, crpxl, w/ tr fos, intbd w/ MARL, v bri bl mod fast mky-stmg cut, sl od, frt yel bl flor res, v frt tan vis light ring
--	--	--	--

MD: 9.977'	MD: 10.071'	MD: 10.166'
TVD: 7,111.83'	TVD: 7,112.08'	TVD: 7,111.17'
Inclination: 89.9°	Inclination: 89.8°	Inclination: 91.3°
Azimuth: 180.1°	Azimuth: 179.8°	Azimuth: 179.2°
VS: -2.689.44'	VS: -2.783.44'	VS: -2.878.43'



Wt: 9.3 VIS: 34 IN

Wt: 9.4 VIS: : :



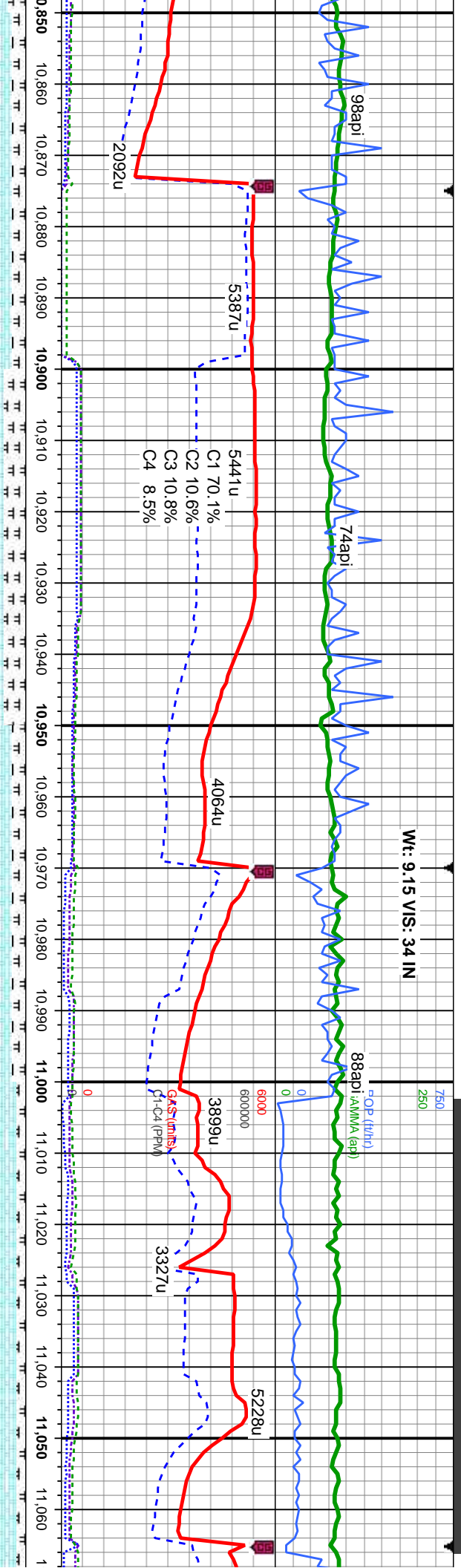
- med gy, occ med gy brn, mot, spty-blky, v calc, crpxl, w/ tr fos, // MARL; v bri bl mod fast mky-stmg cut, frt yel bl flor res, v frt tan vis light ring	CHK: It - med gy, occ med gy brn, mot, vsft-sft, spty-blky, v calc, crpxl, w/ tr fos, inbnd w/ MARL; v bri bl mod fast mky-stmg cut, sl od, frt yel bl flor res, v frt tan vis light ring	CHK: It - med gy, occ med gy brn, mot, vsft-sft, spty-blky, v calc, crpxl, w/ tr fos, inbnd w/ MARL; v bri bl mod fast mky-stmg cut, sl od, frt yel bl flor res, v frt tan vis light ring	CHK: It - med gy, occ med gy brn, mot, vsft-sft, spty-blky, v calc, crpxl, w/ tr fos, inbnd w/ MARL; med - dk gy, stri, sft-frm, spty-pty, brit, arg; v bri bl mod fast mky-stmg cut, sl od, frt yel bl flor res, v frt tan vis light ring	CHK: It - med gy, occ med gy brn, mot, vsft-sft, spty-blky, v calc, crpxl, w/ tr fos, inbnd w/ MARL; med - dk spty-pty, brit, arg; v bri mky-stmg cut, sl od, frt tan vis light ring
--	---	---	--	--

MD: 10,450'
TVD: 7,109.32'
Inclination: 90.7°
Azimuth: 179.5°
VS: -3,162.4'

MD: 10,546'
TVD: 7,108.4'
Inclination: 90.4°
Azimuth: 179.8°
VS: -3,258.39'

7500





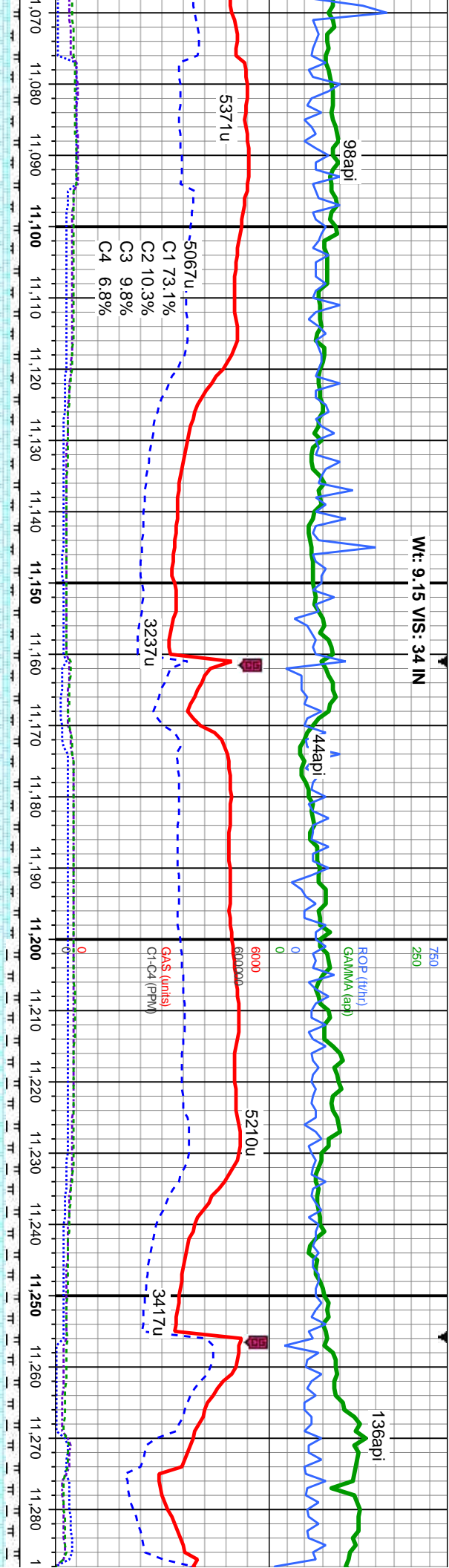
CHK: It - med gy, occ med gy brn, mot, vsft-sft, sbply-blky, v calc, crptxl, w/ tr fos, intbd w/ MARL: med - dk gy, stri, sft-firm, sbply-pty, brit, arg: v bri bl mod fast mky-stmg cut, sl od, fnt yel bl flor res, v fnt tan vis light ring	CHK: It - med gy, occ med gy brn, mot, vsft-sft, sbply-blky, v calc, crptxl, w/ tr fos, intbd w/ MARL: med - dk gy, stri, sft-firm, sbply-pty, brit, arg: v bri bl mod fast mky-stmg cut, sl od, fnt yel bl flor res, v fnt tan vis light ring	CHK: It - med gy, occ med gy brn, mot, vsft-sft, sbply-blky, v calc, crptxl, w/ tr fos, intbd w/ MARL: med - dk gy, stri, sft-firm, sbply-pty, brit, arg: v bri bl mod fast mky-stmg cut, sl od, fnt yel bl flor res, v fnt tan vis light ring	6CHK: It - med gy, occ med gy brn, mot, vsft-sft, sbply-blky, v calc, crptxl, w/ tr fos, intbd w/ MARL: med - dk gy, stri, sft-firm, sbply-pty, brit, arg: v bri bl mod fast mky-stmg cut, sl od, fnt yel bl flor res, v fnt tan vis light ring	CHK: It - med gy, occ med gy brn, mot, vsft-sft, sbply-blky, v calc, crptxl, w/ tr fos, intbd w/ MARL: med - dk gy, stri, sft-firm, sbply-pty, brit, arg: v bri bl mod fast mky-stmg cut, sl od, fnt yel bl flor res, v fnt tan vis light ring
--	--	--	---	--

MD: 10.925'
TVD: 7,108'
Inclination: 90.3°
Azimuth: 179.8°
VS: -3.637.33'

MD: 11.020'
TVD: 7,108.08'
Inclination: 89.6°
Azimuth: 179.1°
VS: -3.732.32'



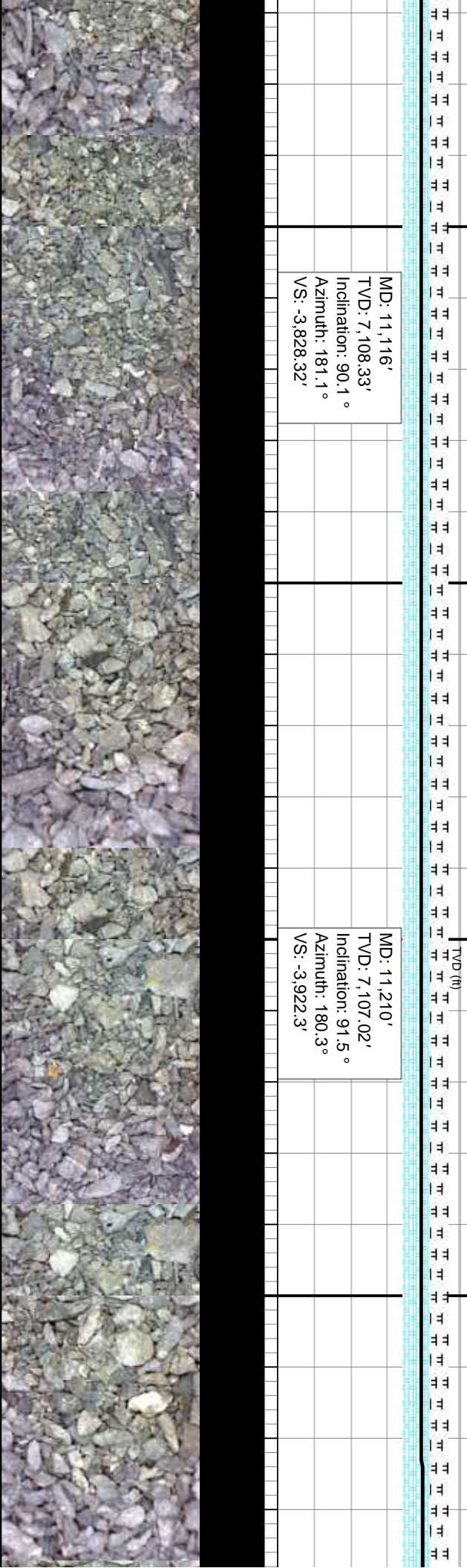
Wt: 9.15 VS: 34 IN

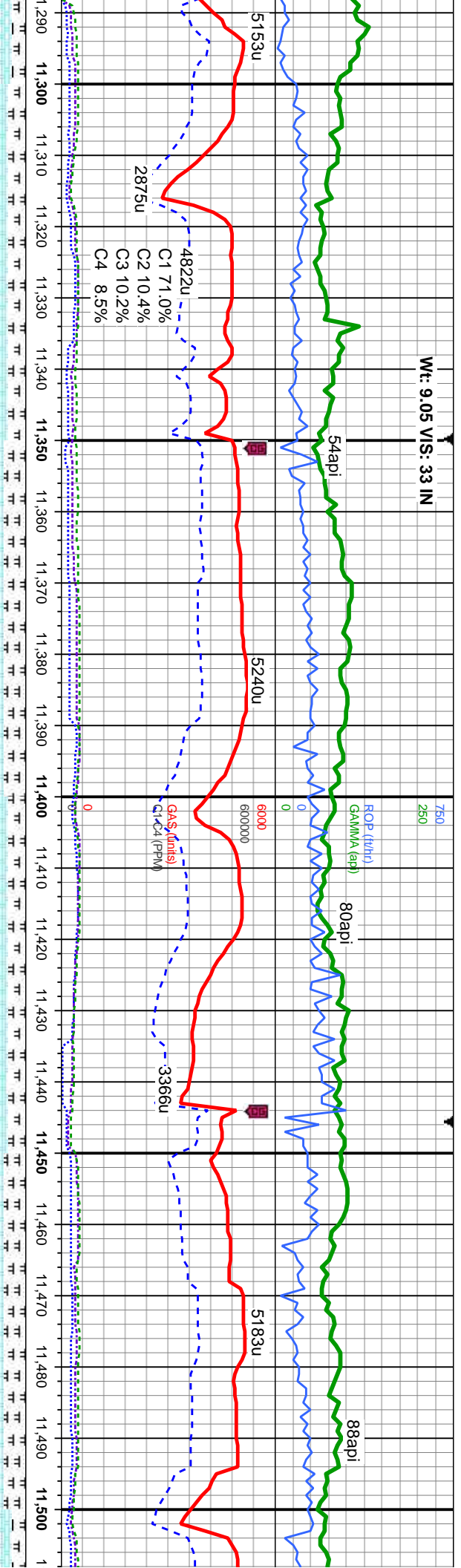


, occ med gy brn, mot, Ky, v calc, crptxl, w/ tr fos, med - dk gy, stri, sft-frm, arg; v bri bl mod fast od, frt yel bl flor res, v frt	CHK: It - med gy, occ med gy brn, mot, vsft-sft, sbply-biky, v calc, crptxl, w/ tr fos, intbd w/ MARL: med - dk gy, stri, sft-frm, sbply-pty, brit, arg; v bri bl mod fast mky-stmg cut, sl od, frt yel bl flor res, v frt tan vis light ring	CHK: It - med gy, occ med gy brn, mot, vsft-sft, sbply-biky, v calc, crptxl, w/ tr fos, intbd w/ MARL: med - dk gy, stri, sft-frm, sbply-pty, brit, arg; v bri bl mod fast mky-stmg cut, sl od, frt yel bl flor res, v frt tan vis light ring	CHK: It - med gy, occ med gy brn, mot, vsft-sft, sbply-biky, v calc, crptxl, w/ tr fos, intbd w/ MARL: med - dk gy, stri, sft-frm, sbply-pty, brit, arg; v bri bl mod fast mky-stmg cut, sl od, frt yel bl flor res, v frt tan vis light ring	CHK: It - med gy, occ med gy brn, mot, vsft-sft, sbply-biky, v calc, crptxl, w/ tr fos, intbd w/ MARL: med - dk gy, stri, sft-frm, sbply-pty, brit, arg; v bri bl mod fast mky-stmg cut, sl od, frt yel bl flor res, v frt tan vis light ring
---	---	---	---	---

MD: 11,116'
TVD: 7,108.33'
Inclination: 90.1 °
Azimuth: 181.1 °
VS: -3,828.32'

MD: 11,210'
TVD: 7,107.02'
Inclination: 91.5 °
Azimuth: 180.3 °
VS: -3,922.3'





mot,	CHK: It - med gy, occ med gy brn, mot,	CHK: It - med gy, occ med gy brn, mot,	CHK: It - med gy, occ med gy brn, mot,	CHK: It - med gy, occ med gy brn, mot,	CHK: It - med gy, occ med gy brn, mot,
vsft-sft, sbply-blky, v calc, crptxl, w/ tr fos,	vsft-sft, sbply-blky, v calc, crptxl, w/ tr fos,	vsft-sft, sbply-blky, v calc, crptxl, w/ tr fos,	vsft-sft, sbply-blky, v calc, crptxl, w/ tr fos,	vsft-sft, sbply-blky, v calc, crptxl, w/ tr fos,	vsft-sft, sbply-blky, v calc, crptxl, w/ tr fos,
intbd w/ MARL: med - dk gy, stri, sft-frn,	intbd w/ MARL: med - dk gy, stri, sft-frn,	intbd w/ MARL: med - dk gy, stri, sft-frn,	intbd w/ MARL: med - dk gy, stri, sft-frn,	intbd w/ MARL: med - dk gy, stri, sft-frn,	intbd w/ MARL: med - dk gy, stri, sft-frn,
sbply-pty, brit, arg: v bri bl mod fast	sbply-pty, brit, arg: v bri bl mod fast	sbply-pty, brit, arg: v bri bl mod fast	sbply-pty, brit, arg: v bri bl mod fast	sbply-pty, brit, arg: v bri bl mod fast	sbply-pty, brit, arg: v bri bl mod fast
mky-stmg cut, sl od, frt yel bl flor res, v frt	mky-stmg cut, sl od, frt yel bl flor res, v frt	mky-stmg cut, sl od, frt yel bl flor res, v frt	mky-stmg cut, sl od, frt yel bl flor res, v frt	mky-stmg cut, sl od, frt yel bl flor res, v frt	mky-stmg cut, sl od, frt yel bl flor res, v frt
tan vis light ring	tan vis light ring	tan vis light ring	tan vis light ring	tan vis light ring	tan vis

MD: 11,305'
TVD: 7,104.7'
Inclination: 91.3°
Azimuth: 180.9°
VS: -4,017.26'

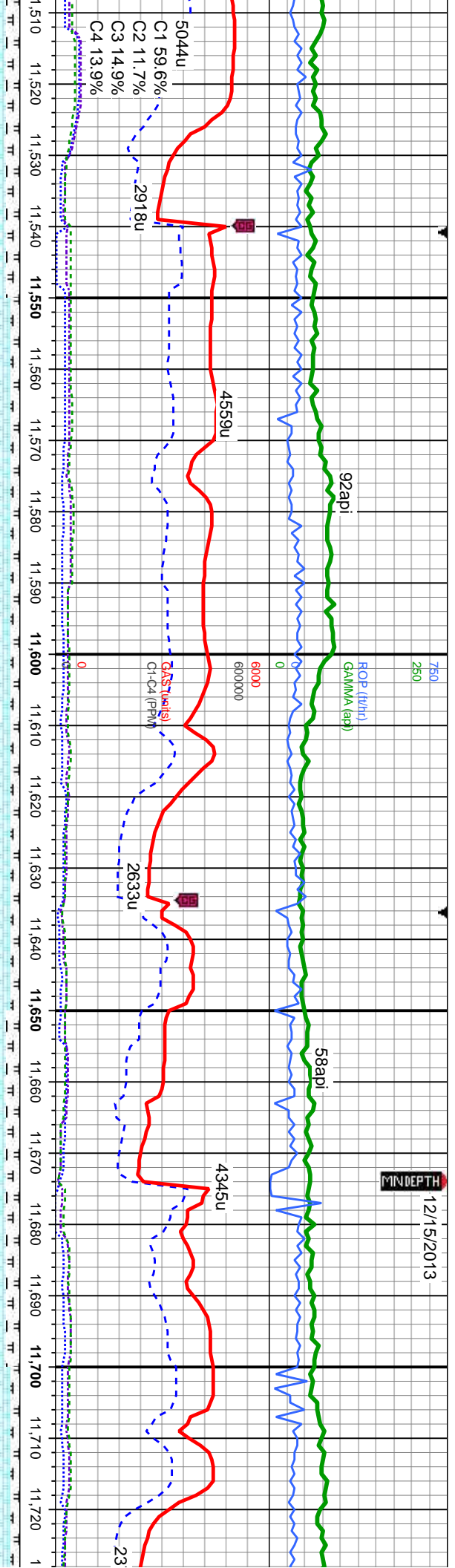
MD: 11,400'
TVD: 7,103.37'
Inclination: 90.3°
Azimuth: 182.3°
VS: -4,112.21'

MD: 11,496'
TVD: 7,102.36'
Inclination: 90.9°
Azimuth: 181.3°
VS: -4,208.16'



12/15/2013

MINDEPTH



- med gy, occ med gy brn, mot, sbply-blky, v calc, crptxl, w/ tr fos, /MARL: med - dk gy, stri, sft-frm, sbply-brt, arg: v bri bl mod fast mky-stmg cut, sl od, fnt yel bl flor res, v fnt light ring	CHK: It - med gy, occ med gy brn, mot, vsft-sft, sbply-blky, v calc, crptxl, w/ tr fos, intbd w/ MARL: med - dk gy, stri, sft-frm, sbply-pty, brt, arg: v bri bl mod fast mky-stmg cut, sl od, fnt yel bl flor res, v fnt tan vis light ring	CHK: It - med gy, occ med gy brn, mot, vsft-sft, sbply-blky, v calc, crptxl, w/ tr fos, intbd w/ MARL: med - dk gy, stri, sft-frm, sbply-pty, brt, arg: v bri bl mod fast mky-stmg cut, sl od, fnt yel bl flor res, v fnt tan vis light ring	CHK: It - med gy, occ med gy brn, mot, vsft-sft, sbply-blky, v calc, crptxl, w/ tr fos, intbd w/ MARL: med - dk gy, stri, sft-frm, sbply-pty, brt, arg: v bri bl mod fast mky-stmg cut, sl od, fnt yel bl flor res, v fnt tan vis light ring
---	--	--	--

MD: 11,591'
TVD: 7,100.54'
Inclination: 91.3°
Azimuth: 180.3°
VS: -4,303.13'

MD: 11,686'
TVD: 7,098.3'
Inclination: 91.4°
Azimuth: 179.8°
VS: -4,398.1'



