

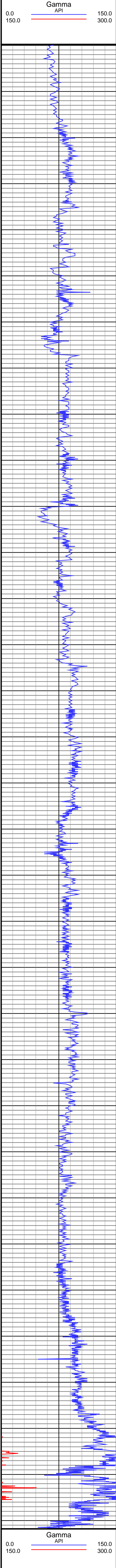


Merritt 6-66-9-0857BH

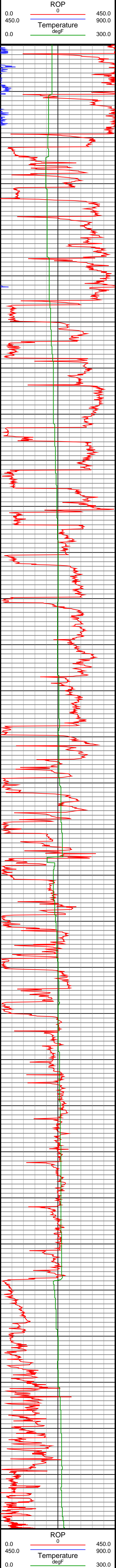
TVD  
1":100'

Company: Bill Barrett  
Well Name: Merritt 6-66-9-0857BH  
API: 05-123-37734  
Rig Id: Nabors M22

State: CO  
County/Parish: Weld  
Survey Company: Crescent Directional Drilling  
Job number: CA-131913



TVD  
3900  
4000  
4100  
4200  
4300  
4400  
4500  
4600  
4700  
4800  
4900  
5000  
5100  
5200  
5300  
5400  
5500  
5600  
5700  
5800  
5900  
6000  
6100  
6200  
6300  
6400  
6500  
6600  
6700  
6800  
6900  
7000  
7100



#43 MD(4074.00) Inc(23.5) Azm(74.0) TVD(3966.12) VS(68.73) NS(131.82) EW(729.13) TEMP(125.6)
#44 MD(4168.00) Inc(24.4) Azm(73.6) TVD(4052.03) VS(68.31) NS(142.46) EW(765.78) TEMP(123.8)
#45 MD(4263.00) Inc(22.4) Azm(74.7) TVD(4139.21) VS(68.02) NS(152.87) EW(802.04) TEMP(118.4)
#46 MD(4359.00) Inc(19.0) Azm(76.7) TVD(4229.00) VS(68.63) NS(161.39) EW(834.87) TEMP(122.0)
#47 MD(4455.00) Inc(17.4) Azm(77.5) TVD(4320.19) VS(70.01) NS(168.09) EW(864.10) TEMP(127.4)
#48 MD(4550.00) Inc(14.8) Azm(78.2) TVD(4411.46) VS(71.57) NS(173.65) EW(889.85) TEMP(129.2)
#49 MD(4645.00) Inc(15.4) Azm(76.6) TVD(4503.18) VS(72.85) NS(179.05) EW(914.00) TEMP(132.8)
#50 MD(4740.00) Inc(16.7) Azm(78.0) TVD(4594.48) VS(74.18) NS(184.81) EW(939.62) TEMP(138.2)
#51 MD(4836.00) Inc(14.6) Azm(78.0) TVD(4686.91) VS(75.79) NS(190.20) EW(964.95) TEMP(141.8)
#52 MD(4930.00) Inc(13.7) Azm(78.5) TVD(4778.06) VS(77.32) NS(194.88) EW(987.45) TEMP(143.6)
#53 MD(5025.00) Inc(14.4) Azm(78.0) TVD(4870.22) VS(78.85) NS(199.58) EW(1010.02) TEMP(147.2)
#54 MD(5121.00) Inc(14.7) Azm(81.3) TVD(4963.14) VS(81.05) NS(203.90) EW(1033.74) TEMP(150.8)
#55 MD(5215.00) Inc(14.8) Azm(81.4) TVD(5054.04) VS(83.93) NS(207.50) EW(1057.40) TEMP(150.8)
#56 MD(5309.00) Inc(13.4) Azm(81.4) TVD(5145.21) VS(86.71) NS(210.93) EW(1080.04) TEMP(149.0)
#57 MD(5405.00) Inc(10.1) Azm(80.7) TVD(5239.18) VS(88.98) NS(213.95) EW(1099.35) TEMP(152.6)
#58 MD(5499.00) Inc(7.3) Azm(81.0) TVD(5332.09) VS(90.57) NS(216.22) EW(1113.39) TEMP(154.4)
#59 MD(5594.00) Inc(6.5) Azm(74.6) TVD(5426.40) VS(91.27) NS(218.59) EW(1124.54) TEMP(152.6)
#60 MD(5689.00) Inc(6.2) Azm(72.0) TVD(5520.82) VS(91.07) NS(221.60) EW(1134.60) TEMP(158.0)
#61 MD(5784.00) Inc(5.6) Azm(72.6) TVD(5615.32) VS(90.71) NS(224.58) EW(1143.90) TEMP(163.4)
#62 MD(5879.00) Inc(6.4) Azm(73.2) TVD(5709.80) VS(90.45) NS(227.49) EW(1153.39) TEMP(141.8)
#63 MD(5975.00) Inc(5.5) Azm(73.3) TVD(5805.28) VS(90.24) NS(230.36) EW(1162.92) TEMP(147.2)
#64 MD(6069.00) Inc(4.4) Azm(74.4) TVD(5898.93) VS(90.15) NS(232.62) EW(1170.71) TEMP(152.6)
#65 MD(6164.00) Inc(3.6) Azm(75.8) TVD(5993.69) VS(90.22) NS(234.34) EW(1177.11) TEMP(150.8)
#66 MD(6259.00) Inc(3.0) Azm(80.2) TVD(6088.54) VS(90.54) NS(235.49) EW(1182.45) TEMP(154.4)
#67 MD(6355.00) Inc(1.7) Azm(82.0) TVD(6184.45) VS(90.98) NS(236.12) EW(1186.34) TEMP(156.2)
#68 MD(6450.00) Inc(0.9) Azm(65.7) TVD(6279.43) VS(91.05) NS(236.62) EW(1188.41) TEMP(158.0)
#69 MD(6545.00) Inc(0.5) Azm(16.2) TVD(6374.42) VS(90.59) NS(237.32) EW(1189.21) TEMP(158.0)
#70 MD(6641.00) Inc(0.8) Azm(314.4) TVD(6470.42) VS(89.65) NS(238.20) EW(1188.85) TEMP(159.8)
#71 MD(6704.00) Inc(0.7) Azm(322.7) TVD(6533.41) VS(88.91) NS(238.81) EW(1188.30) TEMP(161.6)
#72 MD(6736.00) Inc(0.3) Azm(276.4) TVD(6565.41) VS(88.70) NS(238.97) EW(1188.10) TEMP(141.8)
#73 MD(6768.00) Inc(2.8) Azm(182.4) TVD(6597.40) VS(89.41) NS(239.28) EW(1187.98) TEMP(145.4)
#74 MD(6800.00) Inc(7.3) Azm(178.0) TVD(6629.26) VS(92.12) NS(235.39) EW(1187.98) TEMP(145.4)
#75 MD(6832.00) Inc(12.5) Azm(180.3) TVD(6660.78) VS(97.43) NS(229.89) EW(1188.00) TEMP(150.8)
#76 MD(6864.00) Inc(16.8) Azm(180.9) TVD(6691.73) VS(105.20) NS(221.80) EW(1187.91) TEMP(150.8)
#77 MD(6896.00) Inc(19.9) Azm(180.1) TVD(6722.10) VS(114.88) NS(211.73) EW(1187.83) TEMP(149.0)
#78 MD(6927.00) Inc(22.4) Azm(177.7) TVD(6751.01) VS(125.71) NS(200.55) EW(1188.06) TEMP(150.8)
#79 MD(6959.00) Inc(25.7) Azm(176.3) TVD(6780.23) VS(138.43) NS(187.53) EW(1188.75) TEMP(154.4)
#80 MD(6991.00) Inc(29.9) Azm(174.5) TVD(6808.53) VS(153.08) NS(172.66) EW(1189.96) TEMP(156.2)
#81 MD(7022.00) Inc(33.1) Azm(174.5) TVD(6834.96) VS(169.03) NS(156.53) EW(1191.51) TEMP(158.0)
#82 MD(7054.00) Inc(35.7) Azm(174.8) TVD(6861.36) VS(186.82) NS(138.54) EW(1193.20) TEMP(158.0)
#83 MD(7086.00) Inc(38.2) Azm(175.8) TVD(6886.93) VS(205.71) NS(119.37) EW(1194.77) TEMP(159.8)
#84 MD(7117.00) Inc(40.5) Azm(176.2) TVD(6910.90) VS(224.96) NS(99.76) EW(1196.14) TEMP(159.8)
#85 MD(7149.00) Inc(42.9) Azm(177.6) TVD(6934.79) VS(245.74) NS(78.51) EW(1197.28) TEMP(159.8)
#86 MD(7181.00) Inc(45.2) Azm(178.8) TVD(6957.79) VS(267.35) NS(56.27) EW(1197.98) TEMP(161.6)
#87 MD(7213.00) Inc(45.8) Azm(178.8) TVD(6980.22) VS(289.46) NS(33.45) EW(1198.46) TEMP(159.8)
#89 MD(7277.00) Inc(54.4) Azm(178.9) TVD(7021.53) VS(336.82) NS(-15.33) EW(1199.84) TEMP(159.8)
#91 MD(7341.00) Inc(60.3) Azm(181.4) TVD(7055.69) VS(388.89) NS(-69.41) EW(1199.75) TEMP(161.6)
#93 MD(7404.00) Inc(64.8) Azm(181.8) TVD(7084.78) VS(442.25) NS(-125.25) EW(1198.13) TEMP(165.2)
#97 MD(7531.00) Inc(86.2) Azm(181.8) TVD(7116.03) VS(559.01) NS(-247.42) EW(1194.67) TEMP(167.0)