

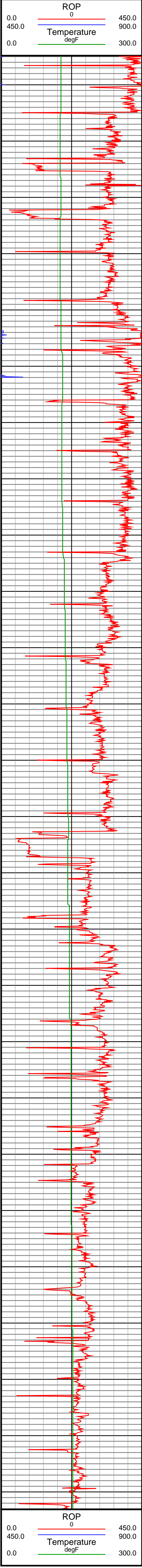
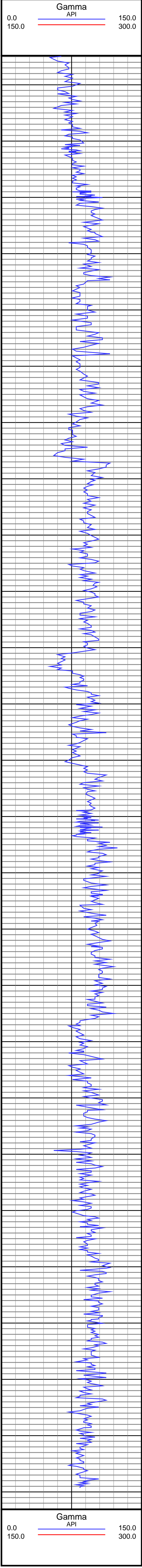


Merritt 6-66-9-0857CH

TVD
1":100'

Company: Bill Barrett
Well Name: Merritt 6-66-9-0857CH
API: 05-123-37706
Rig Id: Nabors M22

State: CO
County/Parish: Weld
Survey Company: Crescent Directional Drilling
Job number: CA-131943



#51 MD(4070.00) Inc(29.6) Azm(81.2) TVD(3908.42) VS(113.14) NS(146.55) EW(803.48) TEMP(125.6)
#52 MD(4165.00) Inc(30.9) Azm(80.9) TVD(3990.48) VS(120.92) NS(154.00) EW(850.75) TEMP(125.6)
#53 MD(4260.00) Inc(29.6) Azm(80.1) TVD(4072.55) VS(128.24) NS(161.89) EW(897.95) TEMP(127.4)
#54 MD(4356.00) Inc(27.2) Azm(79.8) TVD(4156.99) VS(134.80) NS(169.86) EW(942.91) TEMP(125.6)
#55 MD(4451.00) Inc(25.1) Azm(80.2) TVD(4242.26) VS(140.84) NS(177.13) EW(984.14) TEMP(127.4)
#56 MD(4546.00) Inc(23.7) Azm(80.5) TVD(4328.77) VS(146.74) NS(183.71) EW(1022.82) TEMP(131.0)
#57 MD(4641.00) Inc(21.5) Azm(80.5) TVD(4416.47) VS(152.32) NS(189.74) EW(1058.83) TEMP(129.2)
#58 MD(4736.00) Inc(20.2) Azm(80.7) TVD(4505.25) VS(157.55) NS(195.26) EW(1092.19) TEMP(129.2)
#59 MD(4832.00) Inc(19.6) Azm(81.2) TVD(4595.51) VS(162.80) NS(200.41) EW(1124.46) TEMP(131.0)
#60 MD(4927.00) Inc(17.6) Azm(81.6) TVD(4685.55) VS(167.90) NS(204.94) EW(1154.41) TEMP(134.6)
#61 MD(5022.00) Inc(15.8) Azm(79.8) TVD(4776.54) VS(172.19) NS(209.33) EW(1181.35) TEMP(136.4)
#62 MD(5117.00) Inc(14.3) Azm(80.4) TVD(4868.28) VS(175.79) NS(213.58) EW(1205.65) TEMP(138.2)
#63 MD(5211.00) Inc(13.5) Azm(80.8) TVD(4959.52) VS(179.28) NS(217.27) EW(1227.93) TEMP(140.0)
#64 MD(5306.00) Inc(13.1) Azm(81.3) TVD(5051.97) VS(182.83) NS(220.67) EW(1249.52) TEMP(141.8)
#65 MD(5401.00) Inc(11.9) Azm(82.3) TVD(5144.72) VS(186.43) NS(223.61) EW(1269.87) TEMP(143.6)
#66 MD(5496.00) Inc(10.5) Azm(84.5) TVD(5237.91) VS(190.15) NS(225.75) EW(1288.19) TEMP(141.8)
#67 MD(5590.00) Inc(10.2) Azm(82.7) TVD(5330.38) VS(193.63) NS(227.63) EW(1304.97) TEMP(145.4)
#68 MD(5686.00) Inc(8.4) Azm(82.2) TVD(5425.12) VS(196.53) NS(229.66) EW(1320.35) TEMP(145.4)
#69 MD(5780.00) Inc(6.3) Azm(84.2) TVD(5518.34) VS(198.90) NS(231.12) EW(1332.29) TEMP(149.0)
#70 MD(5876.00) Inc(5.5) Azm(84.2) TVD(5613.83) VS(201.04) NS(232.11) EW(1342.10) TEMP(149.0)
#71 MD(5971.00) Inc(4.7) Azm(81.9) TVD(5708.45) VS(202.71) NS(233.12) EW(1350.49) TEMP(149.0)
#72 MD(6066.00) Inc(3.7) Azm(77.6) TVD(5803.20) VS(203.72) NS(234.33) EW(1357.33) TEMP(149.0)
#73 MD(6160.00) Inc(2.8) Azm(77.2) TVD(5897.04) VS(204.25) NS(235.49) EW(1362.54) TEMP(150.8)
#74 MD(6255.00) Inc(2.1) Azm(73.0) TVD(5991.96) VS(204.51) NS(236.51) EW(1366.46) TEMP(150.8)
#75 MD(6351.00) Inc(1.6) Azm(66.4) TVD(6087.91) VS(204.43) NS(237.56) EW(1369.37) TEMP(152.6)
#76 MD(6445.00) Inc(1.2) Azm(61.4) TVD(6181.88) VS(204.13) NS(238.56) EW(1371.44) TEMP(152.6)
#77 MD(6541.00) Inc(1.0) Azm(50.6) TVD(6277.86) VS(203.65) NS(239.57) EW(1372.97) TEMP(152.6)
#78 MD(6637.00) Inc(0.8) Azm(36.2) TVD(6373.85) VS(202.96) NS(240.64) EW(1374.01) TEMP(152.6)