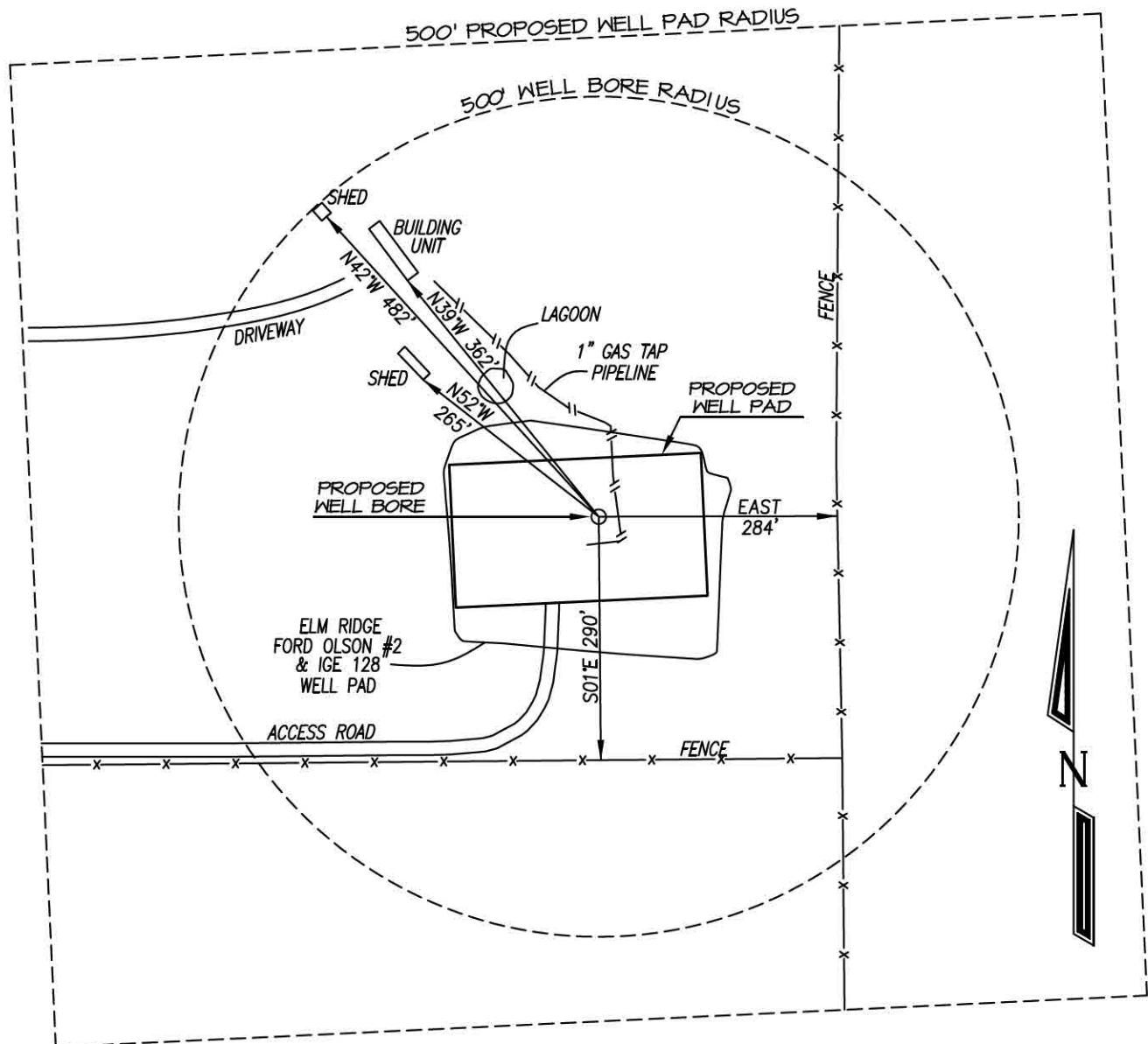


ELM RIDGE EXPLORATION COMPANY, LLC: IGE 130
1442' FSL, 1037' FWL, SECTION 9, T-33-N, R-8-W, N.M.P.M.,
LA PLATA COUNTY, CO. GROUND LEVEL ELEVATION: 6711'

500' RADUIS VISIBLE IMPROVEMENT DETAIL

SURFACE USE = DRY GRASSLAND



GRAPHIC SCALE 1"=200'

