



Scale 1:240 (5"=100') Imperial  
Measured Depth Log

Well Name: XCEL 32C-22HZ  
Location: Section 27, T1N, R67W, Weld County, CO.  
License Number: API: 05-123-38391-00  
Spud Date: 16 DEC2013  
Surface Coordinates: 501' FSL X 2158' FEL SWSE  
Bottom Hole Coordinates: LAT: 40.016224 LONG: -104.899559  
Coordinates: LAT: 40.035288 LONG: -104.875258  
Ground Elevation (ft): 5034' K.B. Elevation (ft): 5050'  
Logged Interval (ft): 7250' To: XXXXX' Total Depth (ft): XXXXX'  
Formation: Codell  
Type of Drilling Fluid: Polymer-Gel

Printed by HORIZONTAL.LOG from WellSight Systems 1-800-447-1534 www.WellSight.com

#### OPERATOR

Company: Kerr-McGee Oil & Gas Onshore LP  
Address: Granite Tower - 1099 18th St, Ste 1800  
Denver, CO 80202  
CO Geologist, Tom Birmingham

#### GEOLOGIST

Name: LARRY GOOLSBY / TEKABE GEDAMU  
Company: Goolsby Brothers & Assoc. (GBA), Inc. (www.goolsbybrothers.com)  
Address: 575 Union Blvd.  
Suite 208,  
Lakewood CO. 80228

E-logs

MWD GR 6900' - XXXXX'





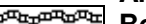






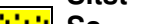
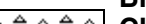

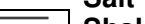

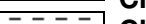







Casing

9 5/8" Surface Casing set @ 1030'  
IC set @ 7929' MD, on 21 DEC 2013,  
Liner run on XX DEC 2013.

Comments

1) Drilling Contractor: Xtreme Drilling, Rig # 23  
2) Directional Drilling: DRILLTECH LLC  
MWD/LWD: DRILLTECH LLC  
3) Gas Equipment: Mudlogging Systems Inc.  
by Terra Services Redbox # ML-TGC 326 & Ratcliff Agitator

ROCK TYPES

	Anhy		Oil sat.		Meta		Ss
	Bent		Congl		Mrlst		Sltst
	Brec		Dol		Salt		Ss
	Cht		Gyp		Shale		Chalk
	Clyst		Igne		Shcol		Carb sh
	Coal		Lmst		Shgy		Sity sh

MINERAL

Anhy

Arggrn

Arg

Bent

Bit

Brecfrag

Calc

Carb

Chtdk

Chtlt

Dol

Feldspar

Ferrpel

Ferr

Glau

Gyp

Hvymin

Kaol

Marl

Minxl

Nodule

Phos

Pyr

Salt

Sandy

Silt

Sil

Sulphur

Tuff

FOSSIL

Algae

Amph

Belm

Bioclst

Brach

Bryozoa

Cephal

Coral

ACCESSORIES

Crin

Echin

Fish

Foram

Fossil

Gastro

Oolite

Ostra

Pelec

Pellet

Pisolite

Plant

Strom

STRINGER

Chlkstg

Anhy

Arg

Bent

Coal

Dol

Gyp

Ls

Mrst

Sltstrg

Ssstrg

TEXTURE

Boundst

Chalky

Cryxln

Earthy

Finexln

Grainst

Lithogr

Microxln

Mudst

Packst

Wackest

OIL SHOWS

Even

Spotted

Ques

Dead

Vspotty

near even

POROSITY TYPE

Earthy

Fenest

Fracture

Inter

Moldic

Organic

OTHER SYMBOLS

Pinpoint

Vuggy

ROUNDING

Rounded

Subrnd

Subang

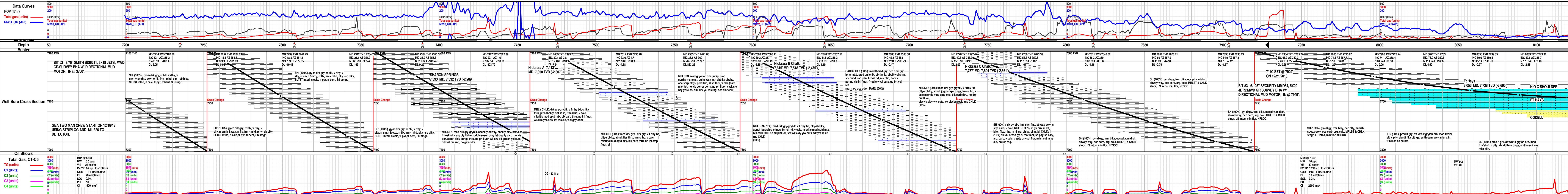
SORTING

Well

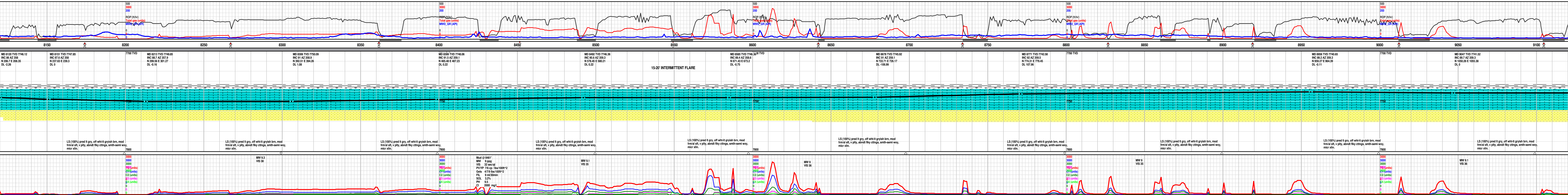
Moderate

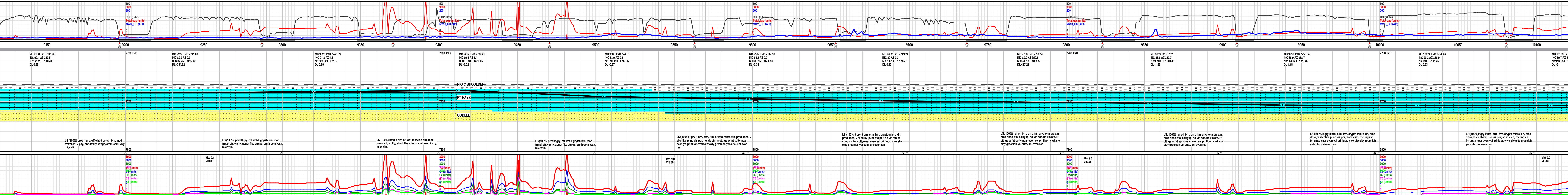
Poor

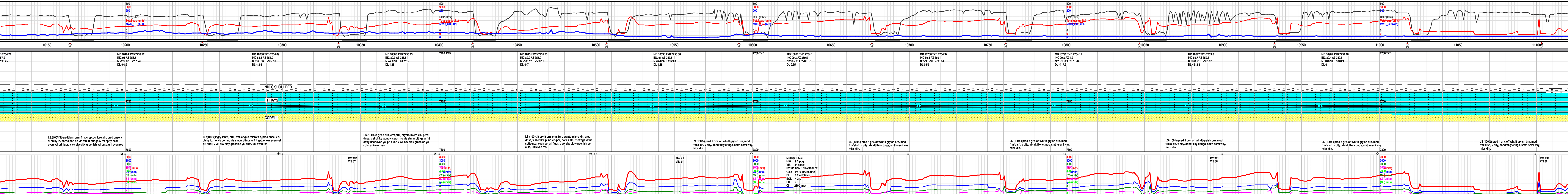
Angular



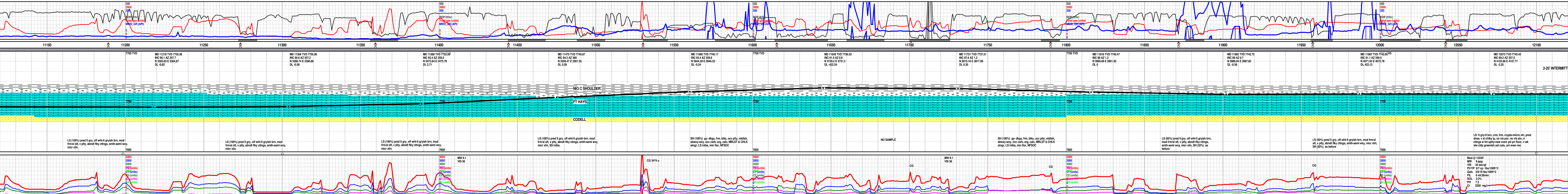








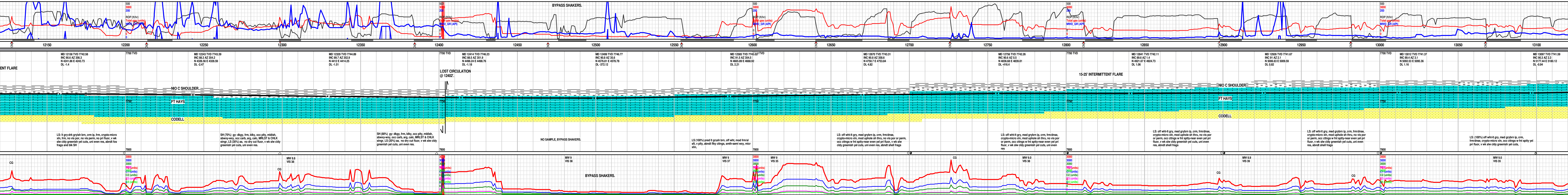


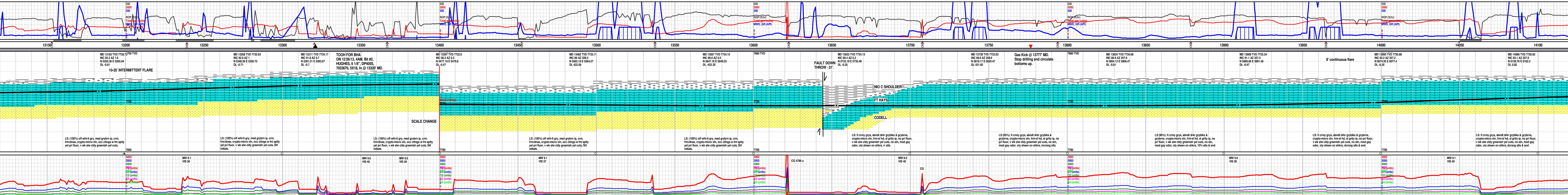


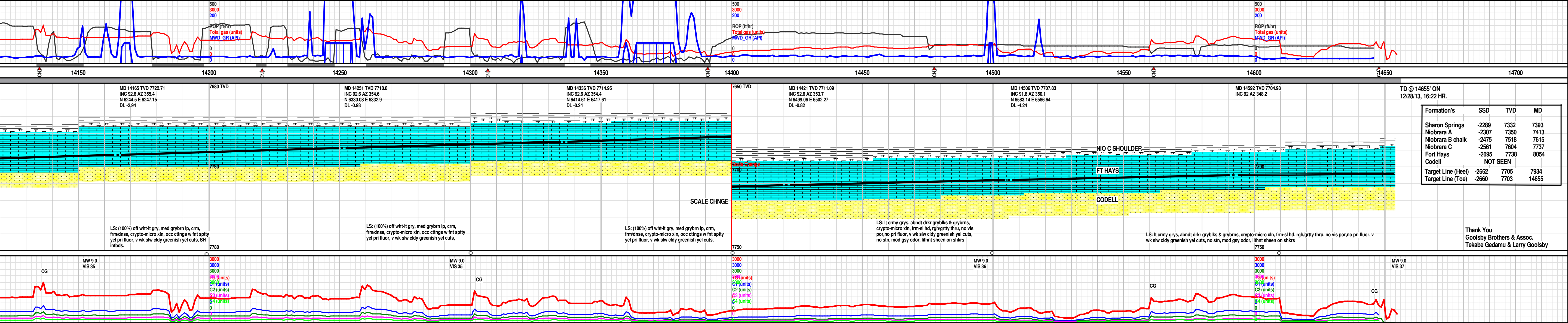
2-25' INTERMITT

Mud @ 12220'  
MW 9 ppg  
VIS 34 sec/qt  
PV/VP 9.7 cp / lbs/100ft<sup>2</sup>  
Gels 3.8/10 lbs/100ft<sup>2</sup>  
FIL 6 ml/30min  
SOL 3.2%  
PH 7.3  
Cl 2200 mg/l









Thank You  
Goolsby Brothers & Assoc.  
Tekabe Gedamu & Larry Goolsby