



# Weatherford®

## Surface Logging Systems

Scale 1:240 (5"=100') Imperial  
Measured Depth Log

Tooke Rockies, Inc.  
(A Weatherford Company)

884 Implement Dr.  
Dickinson, ND 58601  
701-227-4408

717 West Platte  
PO BOX 435  
Casper, WY 82601  
307-265-2124

Well Name: State North Platte 24-K21-26HNC  
Location: SW/SE Sec. 26-T5N-R63W  
License Number: API 05-123-38307-00(Build/Lateral)  
Spud Date: 11/2/2013  
Surface Coordinates: 559' FSL & 2383' FEL  
Weld, CO.  
Bottom Hole Coordinates: 470' FNL & 2122' FEL  
WELD, CO.  
Ground Elevation (ft): 4550  
Logged Interval (ft): 6100 To: 10965  
Formation: NIOBRARA  
Type of Drilling Fluid: WATER BASE

Region: DJ BASIN  
Drilling Completed: 11/8/2013  
K.B. Elevation (ft): 4567  
Total Depth (ft): 10965

Printed by HORIZONTAL.LOG from WellSight Systems 1-800-447-1534 [www.WellSight.com](http://www.WellSight.com)

### OPERATOR

Company: Bonanza Creek Energy Inc.  
Address: 410 17th Street, Suite 1500  
Denver, CO 80202

### GEOLOGIST

Name: Gabriel Genitempo, Jennifer Anderson  
Company: WEATHERFORD SLS/TOOKE ROCKIES  
Address: PO BOX 435  
CASPER, WY 82602  
307.265.2124

## Supervision

Company men: Joe Savage, John Bradley  
Geologist: Paul McKay

## Other Information

### ROCK TYPES

	Anhy		Coal		Lmst		Shcol		Chlk
	Bent		Congl		Meta		Shgy		
	Brec		Dol		Mrlst		Sltst		
	Cht		Gyp		Salt		Ss		
	Clyst		Igne		Shale		Till		

### ACCESSORIES

#### FOSSIL

	Algae
	Amph
	Belm
	Bioclst
	Brach
	Bryozoa
	Cephal
	Coral
	Crin
	Echin
	Fish
	Foram
	Fossil
	Gastro
	Oolite

	Ostra
	Pelec
	Pellet
	Pisolite
	Plant
	Strom

#### MINERAL

	Anhy
	Arggrn
	Arg
	Bent
	Bit
	Brecfrag
	Calc
	Carb

	Chtdk
	Chtlt
	Dol
	Feldspar
	Ferrpel
	Ferr
	Glau
	Gyp
	Hvymin
	Kaol
	Marl
	Minxl
	Nodule
	Phos
	Pyr
	Salt

	Sandy
	Silt
	Sil
	Sulphur
	Tuff

#### STRINGER

	Anhy
	Arg
	Bent
	Coal
	Dol
	Gyp
	Ls
	Mrst
	Sltstrg

	Ssstrg
--	--------

#### TEXTURE

	Boundst
	Chalky
	Cryxln
	Earthy
	Finexln
	Grainst
	Lithogr
	Microxln
	Mudst
	Packst
	Wackest

### OTHER SYMBOLS

#### INTERVALS

	Core
	Dst

#### EVENTS

	Rft
	Sidewall

#### OIL SHOWS

	Even
	Spotted
	Ques
	Dead

#### POROSITY TYPE

	Earthy
	Fenest
	Fracture
	Inter
	Moldic
	Organic

	Pinpoint
	Vuggy

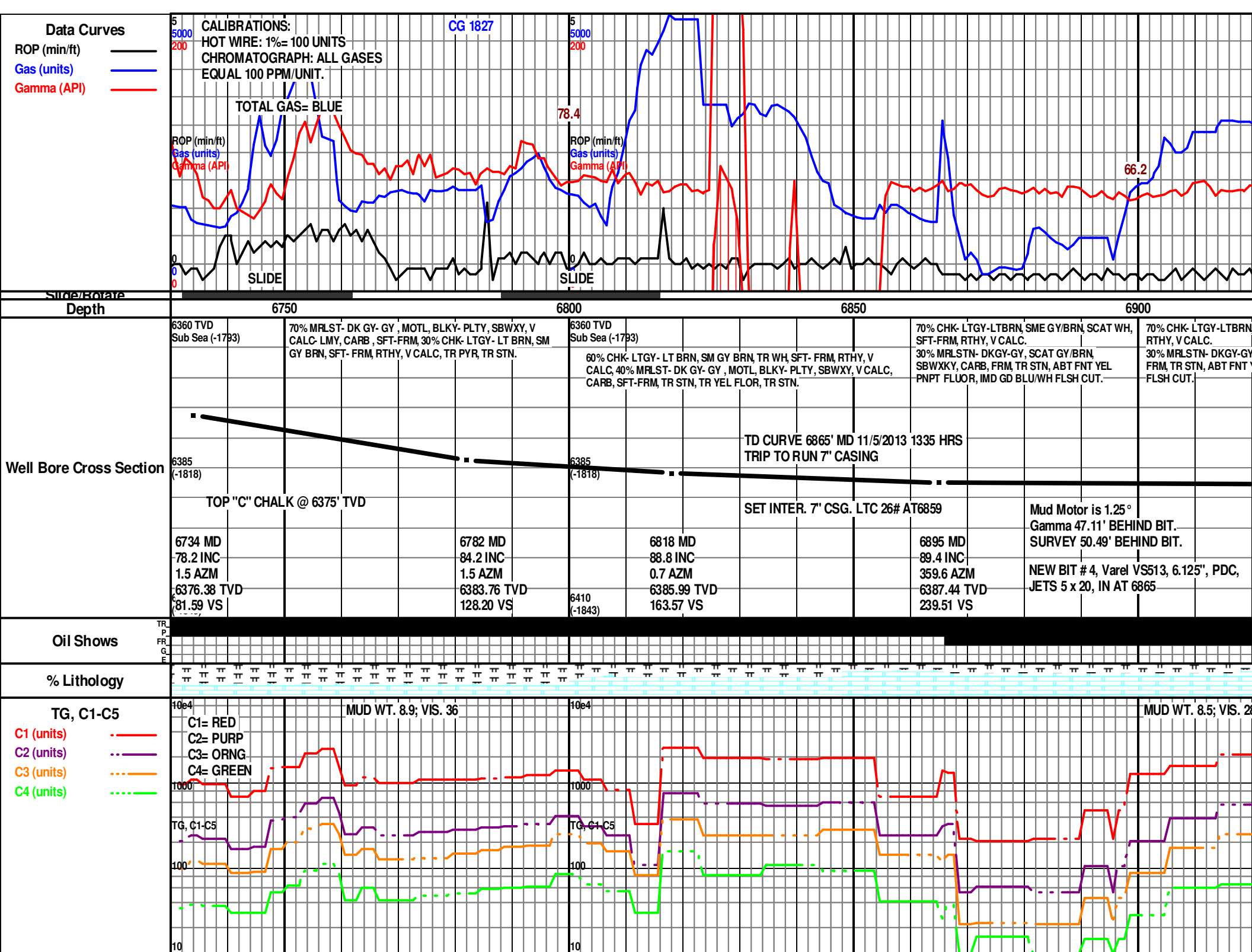
#### ROUNDING

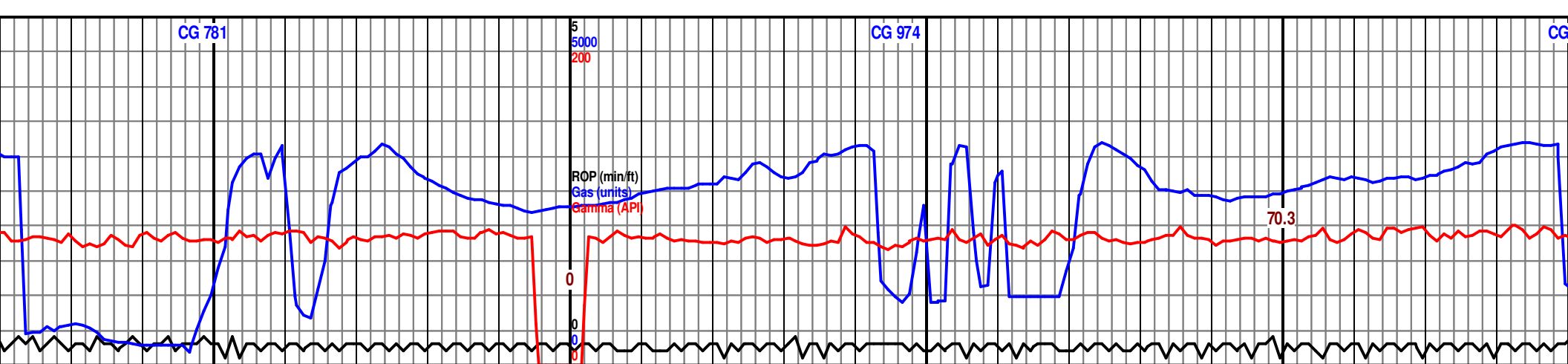
	Rounded
	Subrnd
	Subang

	Angular
--	---------

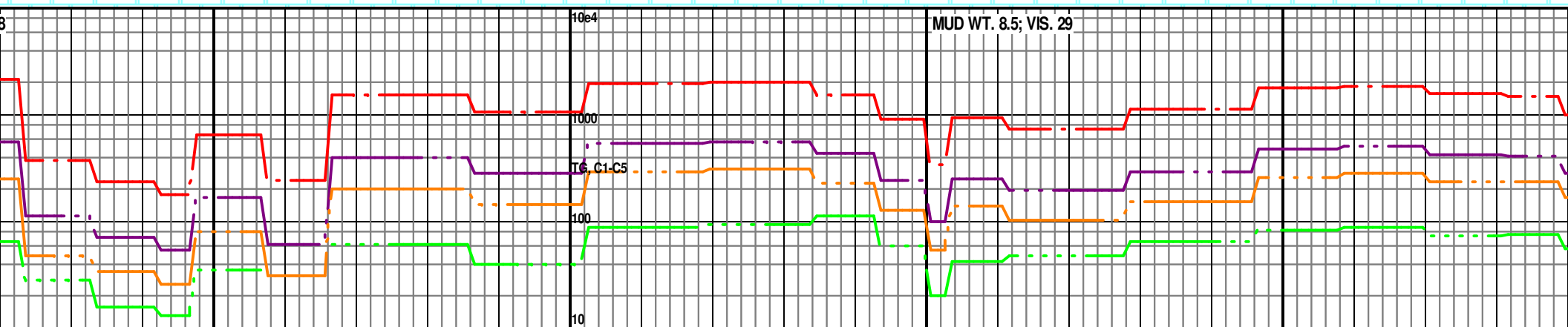
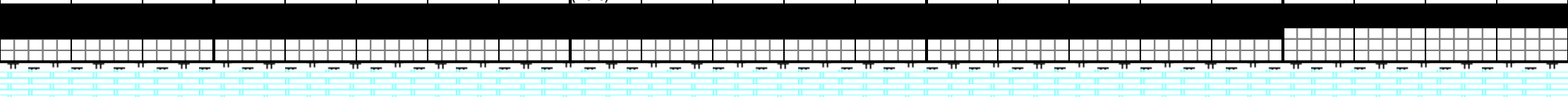
#### SORTING

	Well
	Moderate
	Poor





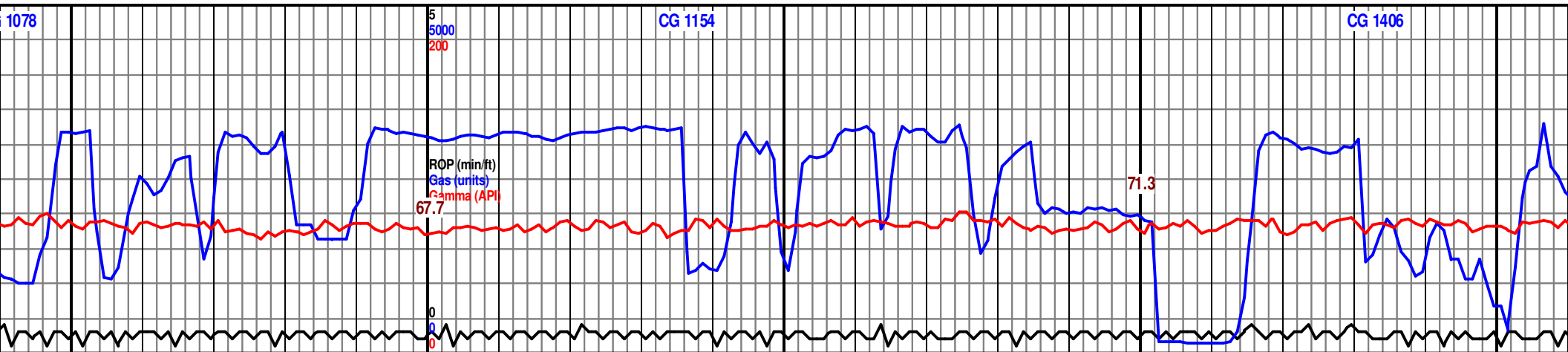
SME GY/BRN, SCAT WH, SFT-FRM, SCAT GY/BRN, SBWXKY, CARB, YEL PNPT FLUOR, IMD GD BLU/WH	70% CHK- LTGY-LTBRN, SME GY/BRN, SCAT WH, SFT-FRM, RTHY, V CALC. 30% MRLSTN- DKGY-GY, SCAT GY/BRN, SBWXKY, CARB, FRM, TR STN, ABT FNT YEL PNPT FLUOR, IMD GD BLU/WH MLKY CUT.	6360 TVD Sub Sea (-1793)  75% CHK- LTGY-LTBRN, SME GY/BRN, SCAT WH, SFT-FRM, RTHY, V CALC. 25% MRLSTN- DKGY-GY, SCAT GY/BRN, SBWXKY, CARB, FRM, TR STN, ABT FNT YEL PNPT FLUOR, IMD GD BLU/WH MLKY CUT.  6385 (-1818)	75% CHK- LTGY-LTBRN, SME GY/BRN, SCAT WH, SFT-FRM, RTHY, V CALC. 25% MRLSTN- DKGY-GY, SCAT GY/BRN, SBWXKY, CARB, FRM, TR STN, ABT FNT YEL PNPT FLUOR, IMD GD BLU/WH MLKY CUT.	70% CHK- LTGY-LTBRN, SME GY/BRN, TR WH, SFT-FRM, RTHY, V CALC. 30% MRLSTN- DKGY-GY, SCAT GY/BRN, SBWXKY, FRM, TR STN, SCAT YEL PNPT FLUOR, IMD FNT B MLKY CUT.
	6991 MD 89.8 INC 0.5 AZM 6388.11 TVD 334.30 VS	6410 (-1843)		7087 MD 89.4 INC 0.7 AZM 6388.79 TVD 428.95 VS



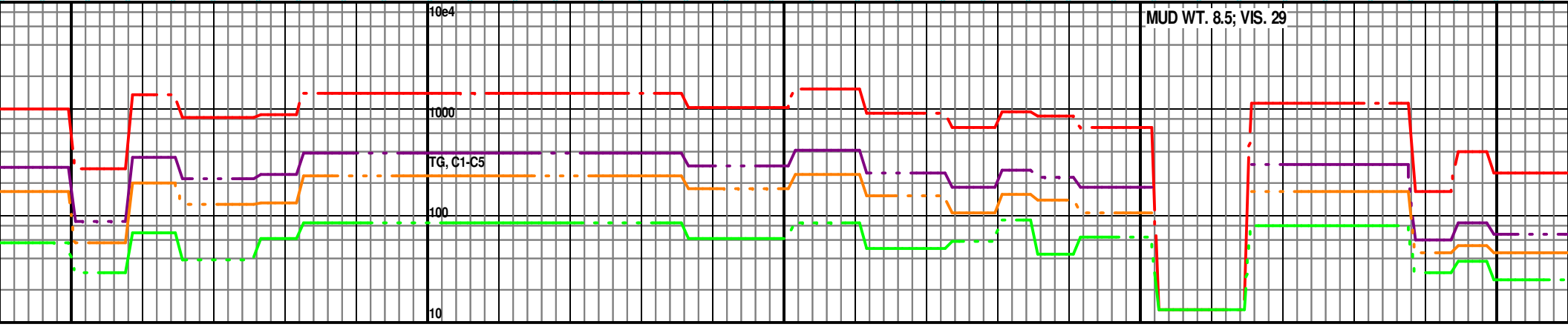
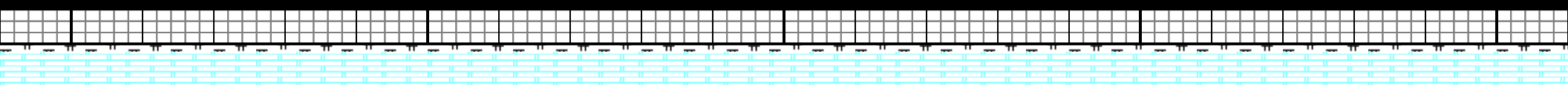
1078

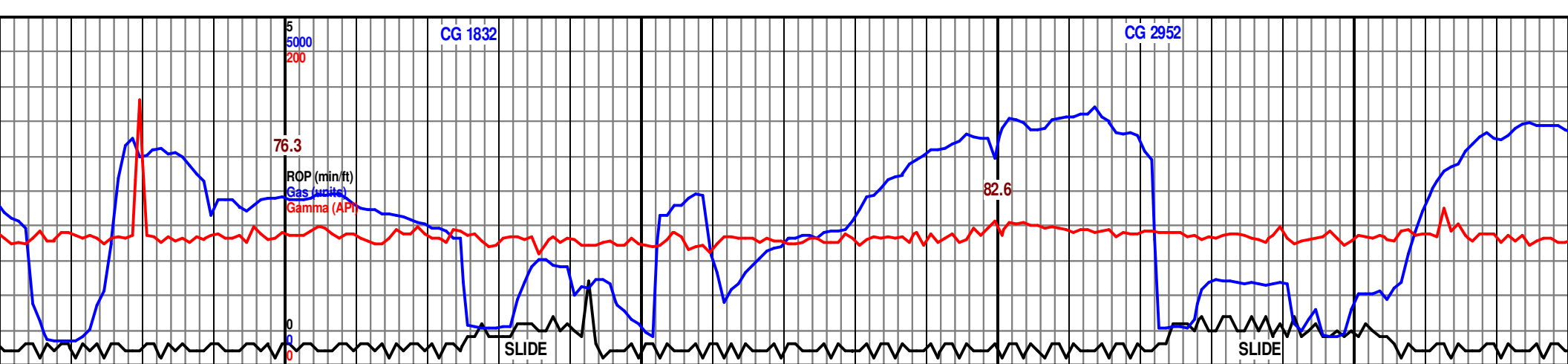
CG 1154

CG 1406

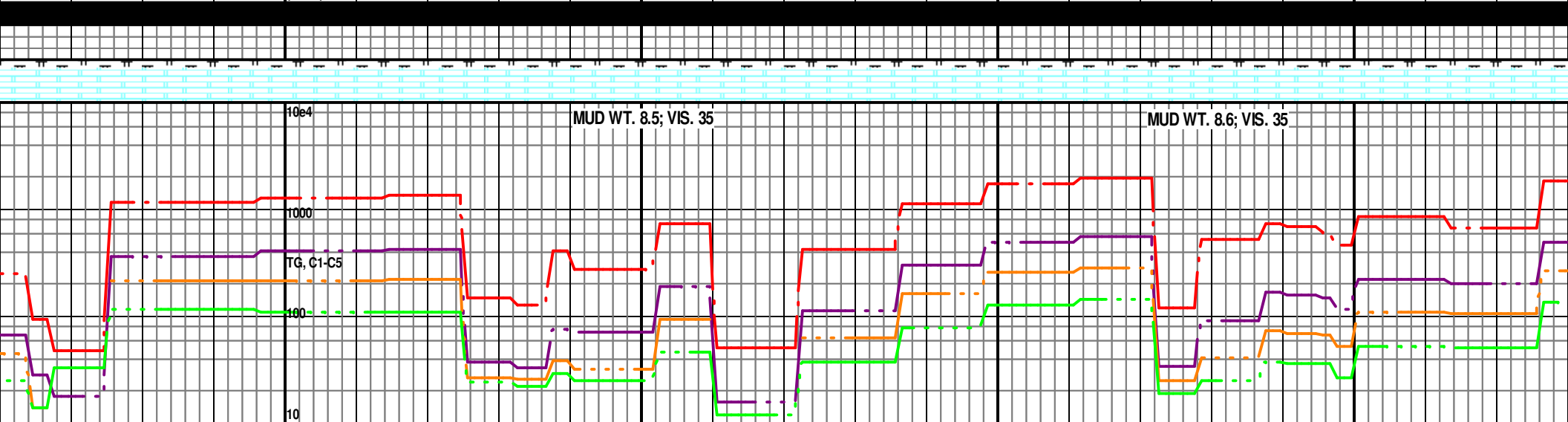


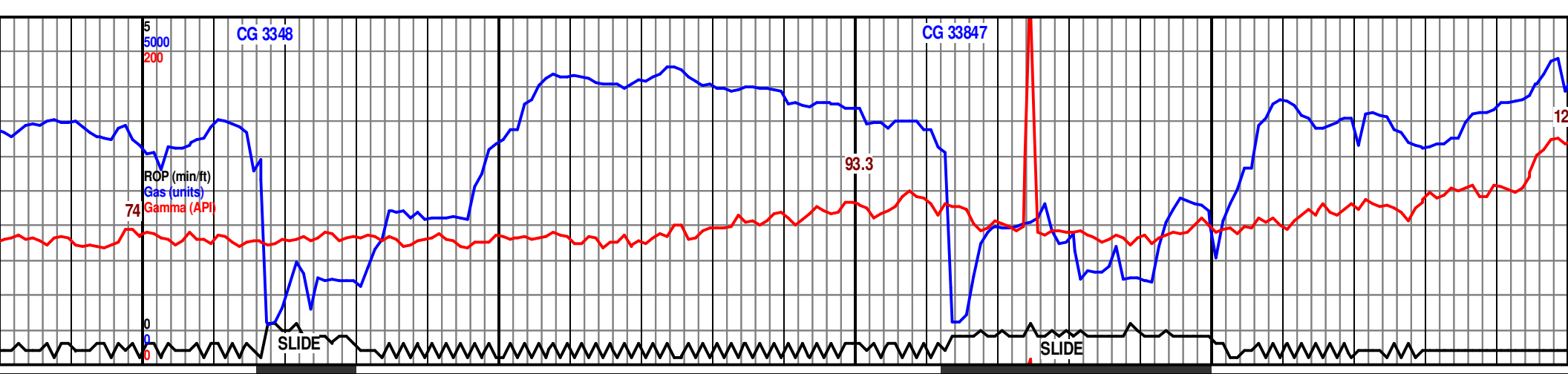
7150		7200		7250		7300		7350	
-FRM, CARB, LU/WH		70% CHK- LTGY-LTBRN, SME GY/BRN, TR WH, SFT-FRM, RTHY, V CALC. 30% MRLSTN- DKGY-GY, SCAT GY/BRN, SBWXKY, CARB, FRM, TR STN, SCAT YEL PNPT FLUOR, IMD FNT BLUWH MLKY CUT.		3630 TVD Sub Sea (-1793)  70% CHK- LTGY-LTBRN, SME MED GY, TR WH, SFT-FRM, RTHY, V CALC. 30% MRLSTN- DKGY-GY, SCAT GY/BRN, SBWXKY, CARB, FRM, TR STN, TR YEL PNPT FLUOR, IMD FNT BLUWH MLKY CUT.		70% CHK- LTGY-LTBRN, SME MED GY, TR WH, SFT-FRM, RTHY, V CALC. 30% MRLSTN- DKGY-GY, SCAT GY/BRN, SBWXKY, CARB, FRM, TR STN, TR YEL PNPT FLUOR, IMD FNT BLUWH MLKY CUT.		70% CHK- LTGY-LTBRN, SME MED GY, TR WH, SFT-FRM, RTHY, V CALC. 30% MRLSTN- DKGY-GY, SCAT GY/BRN, SBWXKY, CARB, FRM, TR STN, TR YEL PNPT FLUOR, IMD FNT BLUWH MLKY CUT.	
		6385 (-1818)							
		7183 MD 89.6 INC 358.6 AZM 6389.62 TVD 523.85 VS				7278 MD 89.6 INC 357.3 AZM 6390.25 TVD 618.15 VS			
		6410 (-1843)							



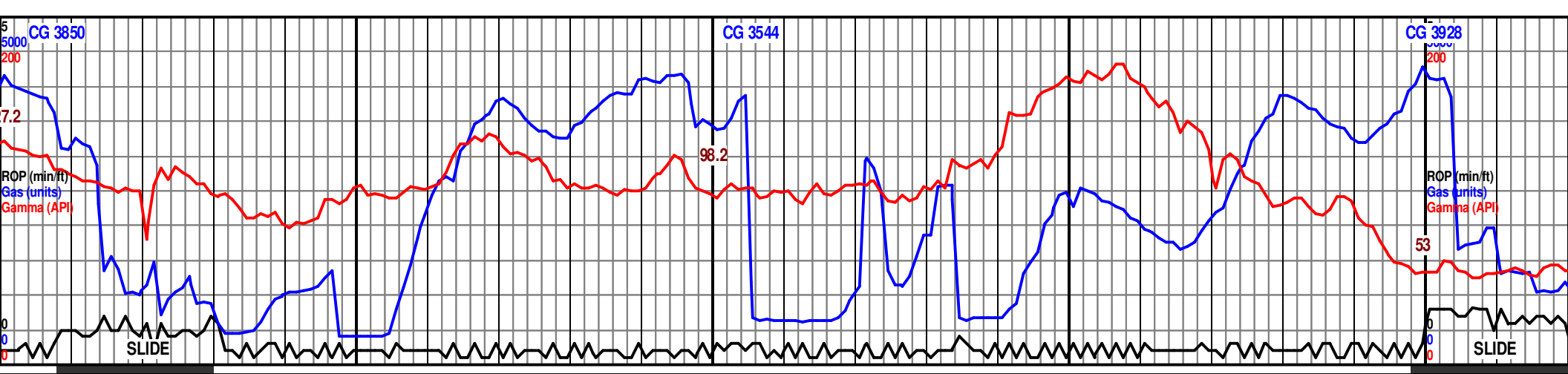


7400				7450				7500				7550			
LTGY-LTBRN, SME MED GY, TR WH, SFT-FRM, L.C.				70% CHK- LTGY-LTBRN, SME MED GY, TR WH, SFT-FRM, RTHY, V CALC.				70% CHK- LTGY-LTBRN, SME MED GY, TR WH, SFT-FRM, RTHY, V CALC.				70% CHK- LTGY-LTBRN, SME MED GY, TR WH, SFT-FRM, RTHY, V CALC.			
N- DKGY-GY, SCAT GY/BRN, SBWXKY, CARB, TR STN, TR YEL PNPT FLUOR, SL BLU/WH MLKY				30% MRLSTN- DKGY-GY, SCAT GY/BRN, SBWXKY, CARB, CALC, FRM, TR CALC, TR STN, TR YEL FLUOR, SL BLU/WH MLKY CUT.				30% MRLSTN- DKGY-GY, SCAT GY/BRN, SBWXKY, CARB, CALC, FRM, TR CALC, TR STN, TR YEL FLUOR, SL BLU/WH MLKY CUT.				30% MRLSTN- DKGY-GY, SCAT GY/BRN, SBWXKY, CARB, CALC, FRM, TR CALC, TR STN, TR YEL FLUOR, SL BLU/WH MLKY CUT.			
7372 MD 89.7 INC 357.8 AZM 6390.84 TVD 711.54 VS				7467 MD 89.4 INC 357.2 AZM 6391.62 TVD 805.93 VS				7562 MD 90.2 INC 0.1 AZM 6391.96 TVD 900.08 VS							

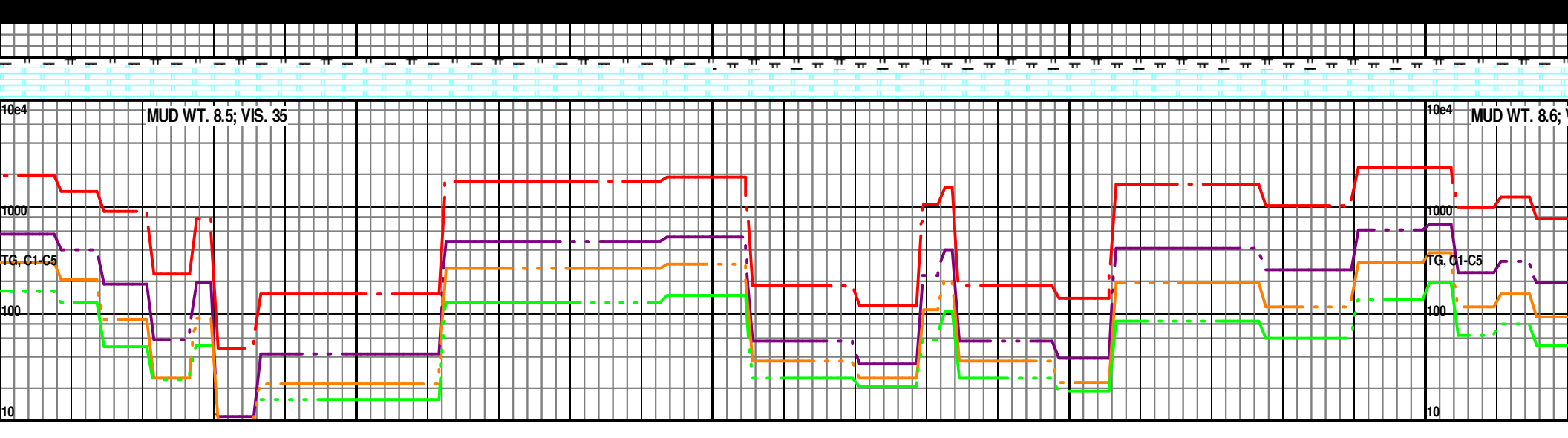




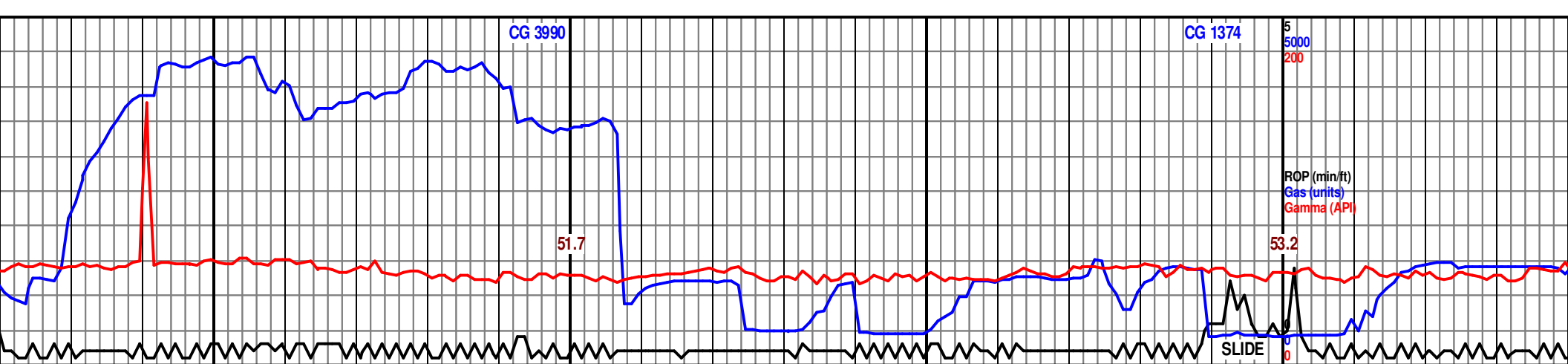
7600				7650				7700				7750				7800			
Y, TR WH, SFT-FRM,				6360 TVD Sub Sea (-1793)				70% CHK- LTGY-LTBRN, SME MED GY, TR WH, SFT-FRM, RTHY, V CALC.				70% CHK- LTGY-GY- LTBRN, TR WH, SFT-FRM, RTHY, V CALC.				70% CHK- LTGY-GY- LTBRN, TR WH, SFT-FRM, RTHY, V CALC. 30% MRLSTN- DKGY-GY, SM GY/BRN, SBWXKY, CARB, CALC,			
RN, SBWXKY, CARB, L FLUOR, SL BLU/WH				70% CHK- LTGY-LTBRN, SME MED GY, TR WH, SFT-FRM, RTHY, V CALC. 30% MRLSTN- DKGY-GY, SCAT GY/BRN, SBWXKY, CARB, CALC, FRM, TR CALC, TR STN, TR YEL FLUOR, SL BLU/WH RESID CUT.				30% MRLSTN- DKGY-GY, SCAT GY/BRN, SBWXKY, CARB, CALC, FRM, TR CALC, TR STN, TR YEL FLUOR, SL BLU/WH RESID CUT.				30% MRLSTN- DKGY-GY, SM GY/BRN, SBWXKY, CARB, CALC, FRM, TR CALC, TR STN, TR YEL FLUOR, SL BLU/WH RESID CUT.				FRM, TR CALC, TR STN, SL BLU/WH RESID CUT.			



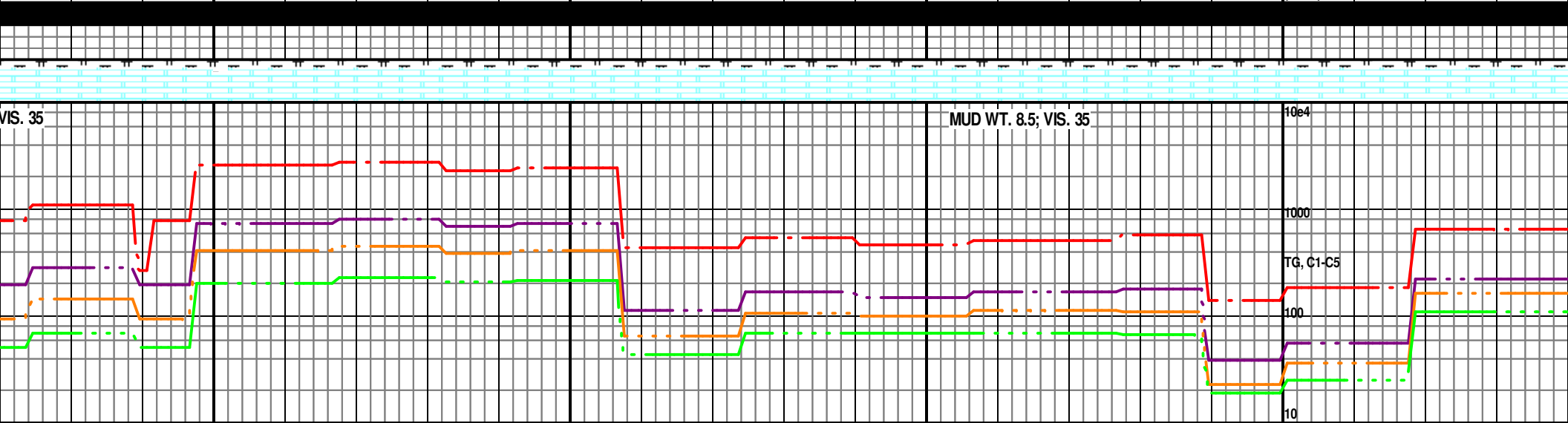
<p>6360 TVD Sub Sea (-1793) 70% CHK- LTGY-GY- LTBRN, TR WH, SFT-FRM, RTHY, V CALC. 30% MRLSTN- DKGY-GY, SM GY/BRN, SBWXKY, CARB, CALC, FRM, TR CALC, TR STN, SL BLU/WH RESID CUT.</p> <p>6385 (-1818)</p> <p>6410 (-1843)</p>	<p>7848 MD 91.6 INC 2.2 AZM 6391.37 TVD 1182.43 VS</p>	<p>65% CHK- LTGY-GY- LTBRN, TR WH, SFT-FRM, RTHY, V CALC. 35% MRLSTN- DKGY-GY, SM GY/BRN, SBWXKY, CARB, CALC, FRM, TR CALC, TR STN, SL BLU/WH RESID CUT.</p> <p>7943 MD 92.1 INC 2.4 AZM 6388.32 TVD 1275.54 VS</p>	<p>65% CHK- LTGY-GY- LTBRN, TR WH, SFT-FRM, RTHY, V CALC. 35% MRLSTN- DKGY-GY, SM GY/BRN, SBWXKY, CARB, CALC, FRM, TR CALC, TR STN, SL BLU/WH RESID CUT.</p> <p>6385 (-1818)</p> <p>6410 (-1843)</p>	<p>6360 TVD Sub Sea (-1793) 70% CHK- LTGY-GY- LTBRN, TR WH, SFT-FRM, RTHY, V CALC. 30% MRLSTN- DKGY-GY, SM GY/BRN, SBWXKY, CARB, CALC, FRM, TR CALC, TR STN, SL BLU/WH RESID CUT.</p>
---	--	---	--	---



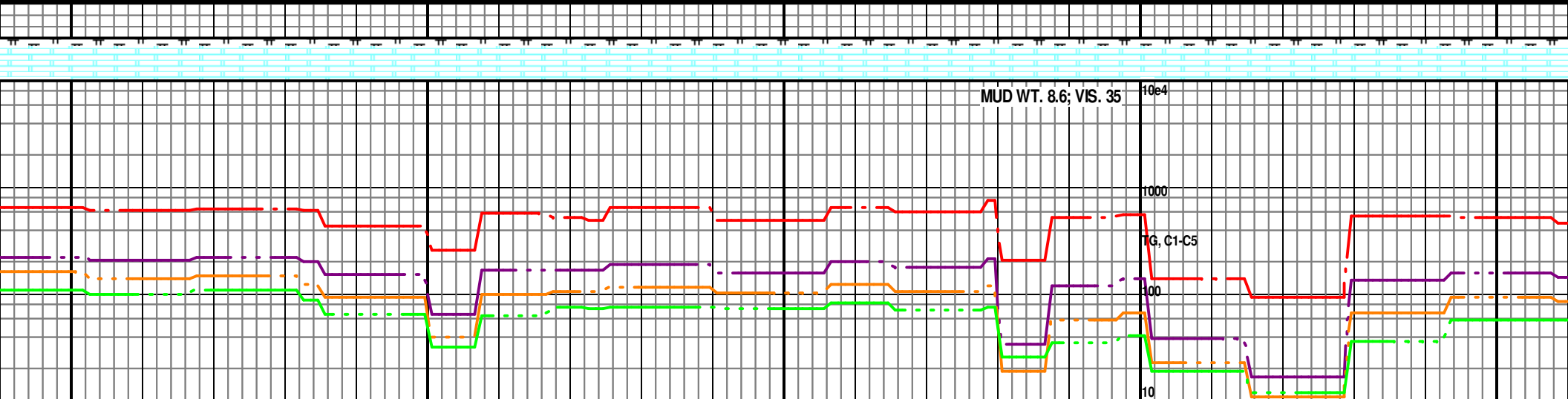
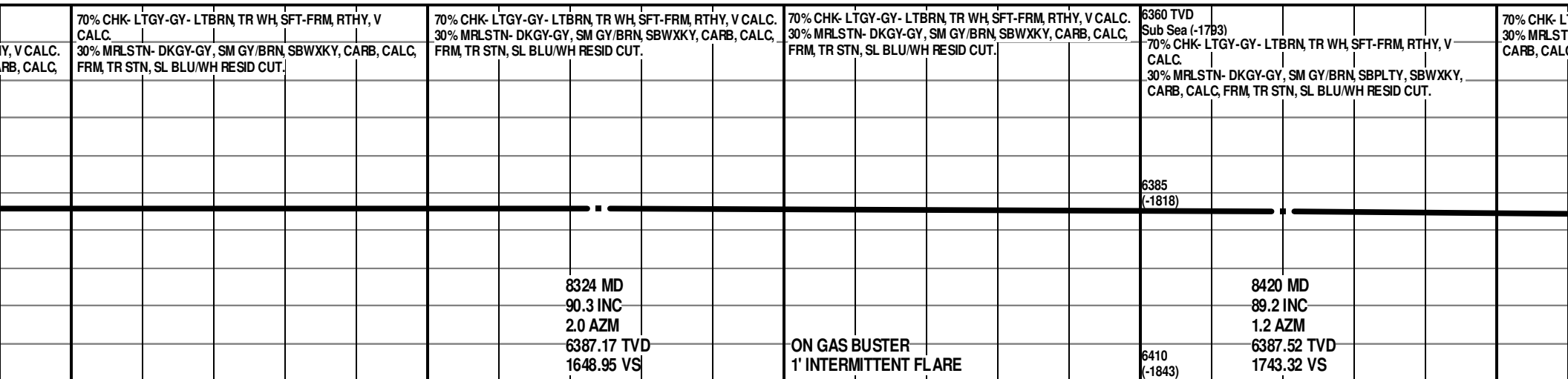




8050	8100	8150	8200
BRN, TR WH, SFT-FRM, RTHY, V CALC. SM GY/BRN, SBWXKY, CARB, CALC, SL BLU/WH RESID CUT.	70% CHK- LTGY-GY- LTBRN, TR WH, SFT-FRM, RTHY, V CALC. 30% MRLSTN- DKGY-GY, SM GY/BRN, SBWXKY, CARB, CALC, FRM, TR CALC, TR STN, SL BLU/WH RESID CUT.	70% CHK- LTGY-GY- LTBRN, TR WH, SFT-FRM, RTHY, V CALC. 30% MRLSTN- DKGY-GY, SM GY/BRN, SBWXKY, CARB, CALC, FRM, TR CALC, TR STN, SL BLU/WH RESID CUT.	70% CHK- LTGY-GY- LTBRN, TR WH, SFT-FRM, RTHY, V CALC. 30% MRLSTN- DKGY-GY, SM GY/BRN, SBWXKY, CARB, CALC, FRM, TR CALC, TR STN, SL BLU/WH RESID CUT.
8038 MD 89.9 INC 2.1 AZM 6386.67 TVD 1368.69 VS	ON GAS BUSTER NO FLARE	8134 MD 90.1 INC 3.1 AZM 6386.66 TVD 1462.74 VS	8229 MD 89.5 INC 2.4 AZM 6387.01 TVD 1555.75 VS



	5	
	5000	
	200	



CG 724

CG 1038

5  
5000  
200

CG 509

79.6

ROP (min/ft)  
Gas (units)  
Gamma (API)

64.4

SLIDE

8500

8550

8600

8650

TG-Y- LTBRN, TR WH, SFT-FRM, RTHY, V CALC.  
N- DKGY-GY, SM GY/BRN, SBPLTY, SBWXKY,  
C, FRM, TR STN, SL BLU/WH RESID CUT.70% CHK- LTGY-GY- LTBRN, TR WH, SFT-FRM, RTHY, V CALC.  
30% MRLSTN- DKGY-GY, SM GY/BRN, SBPLTY, SBWXKY,  
CARB, CALC, FRM, TR STN, SL BLU/WH RESID CUT.70% CHK- LTGY-GY- LTBRN, TR WH, SFT-FRM, RTHY, V CALC.  
30% MRLSTN- DKGY-GY, SM GY/BRN, SBPLTY, SBWXKY,  
CARB, CALC, FRM, TR STN, SL BLU/WH RESID CUT.6360 TVD  
Sub Sea (-1793)  
70% CHK- LTGY-GY- LTBRN, TR WH, SFT-FRM, RTHY, V  
CALC.  
30% MRLSTN- DKGY-GY, SM GY/BRN, SBPLTY, SBWXKY,  
CARB, CALC, FRM, TR STN, SL BLU/WH RESID CUT.70% CHK- LTGY-GY- SCAT LTBRN, T  
V CALC.  
30% MRLSTN- DKGY-GY, SM GY/BRN  
SBWXKY, CARB, CALC, FRM, TR STN,  
BLU/WH MLKY CUT.8515 MD  
90.0 INC  
2.6 AZM  
6388.13 TVD  
1836.60 VSON GAS BUSTER  
1' INTERMITTENT FLARE6385  
(-1818)8611 MD  
87.9 INC  
1.5 AZM  
6389.84 TVD  
1930.79 VS6410  
(-1843)

MUD WT. 8.7; VIS. 35

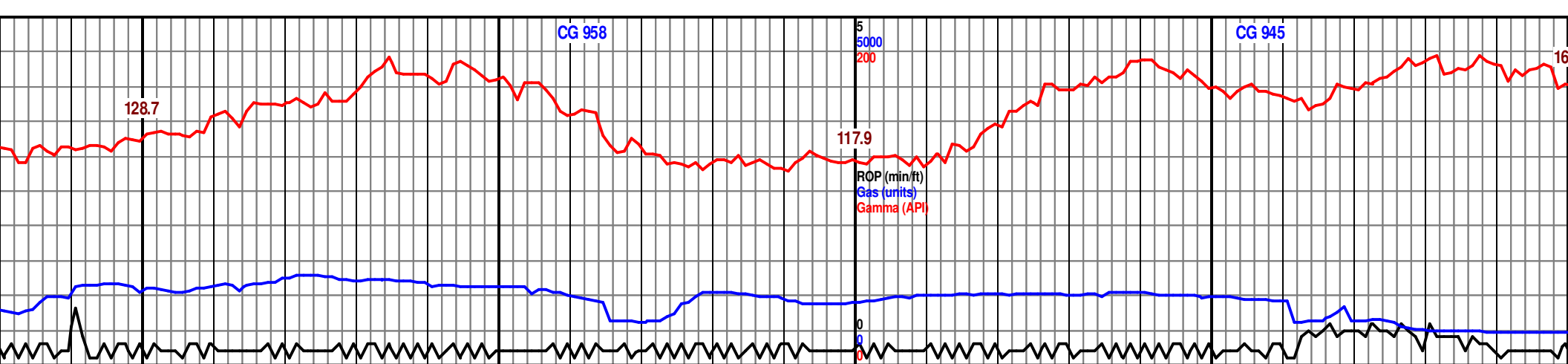
10e4

1000

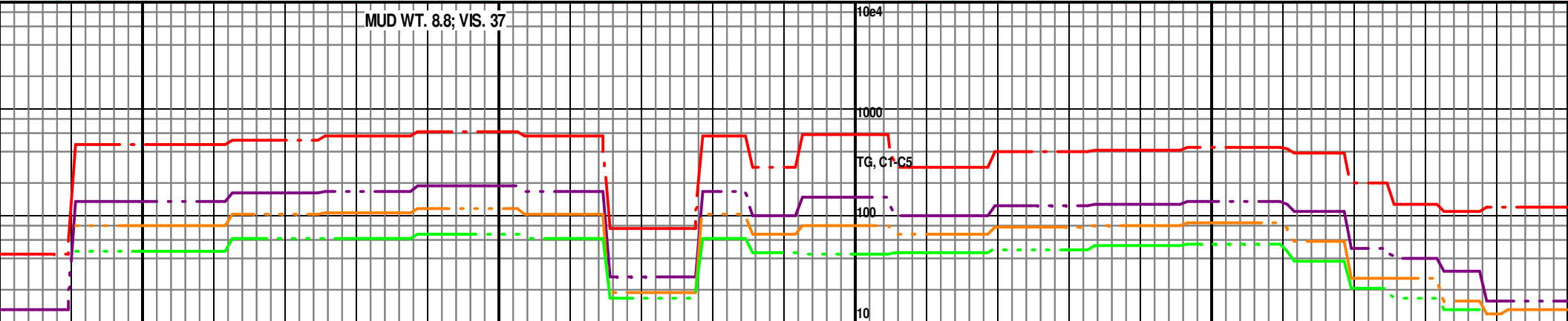
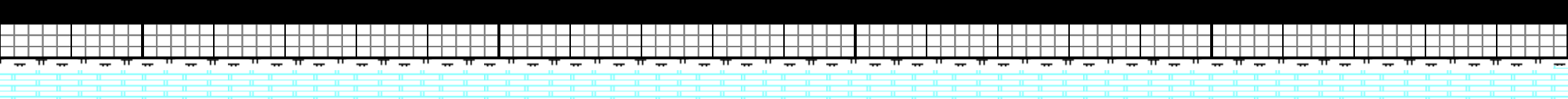
TG, C1-C5

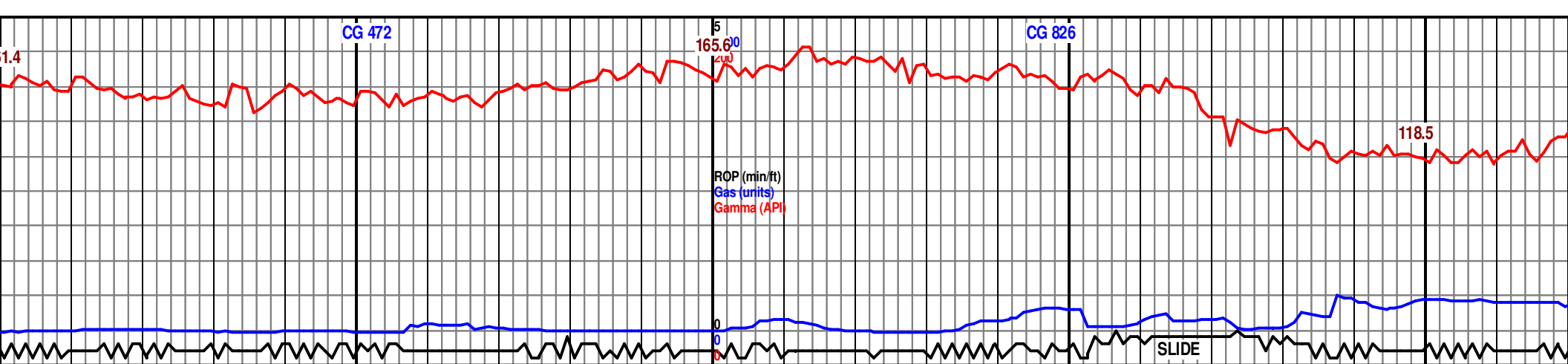
100

10

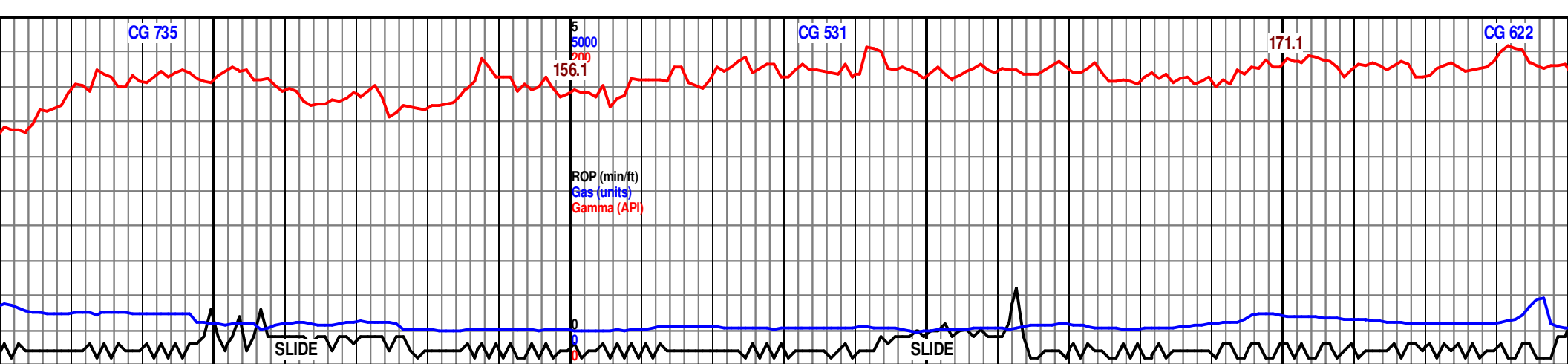


8700		8750		8800		8850		8900
R WH, SFT-FRM, RTHY, V CALC.		70% CHK- LTGY-GY- SCAT LTBRN, TR WH, SFT-FRM, RTHY, V CALC.		70% CHK- LTGY-GY- SCAT LTBRN, TR WH, SFT-FRM, RTHY, V CALC.		70% CHK- LTGY-GY- SCAT LTBRN, TR WH, SFT-FRM, RTHY, V CALC.		70% CHK- LTGY-GY- SCAT LTBRN, TR WH, SFT-FRM, RTHY, V CALC.
30% MRLSTN- DKGY-GY, SM GY/BRN, TR GY/BLK, SBPLTY, SBWXKY, CARB, CALC, FRM, TR STN, NO FLUOR, SL BLU/WH MLKY CUT.		30% MRLSTN- DKGY-GY, SM GY/BRN, TR GY/BLK, SBPLTY, SBWXKY, CARB, CALC, FRM, TR STN, NO FLUOR, SL BLU/WH MLKY CUT.		30% MRLSTN- DKGY-GY, SM GY/BRN, TR GY/BLK, SBPLTY, SBWXKY, CARB, CALC, FRM, TR STN, NO FLUOR, SL BLU/WH MLKY CUT.		30% MRLSTN- DKGY-GY, SM GY/BRN, TR GY/BLK, SBPLTY, SBWXKY, CARB, CALC, FRM, TR STN, NO FLUOR, SL BLU/WH MLKY CUT.		30% MRLSTN- DKGY-GY, SM GY/BRN, TR GY/BLK, SBPLTY, SBWXKY, CARB, CALC, FRM, TR STN, NO FLUOR, SL BLU/WH MLKY CUT.
8707 MD 89.0 INC 1.2 AZM 6392.43 TVD 2025.20 VS		ON GAS BUSTER 1' INTERMITTENT FLARE		8803 MD 89.8 INC 2.8 AZM 6393.49 TVD 2119.43 VS				8898 MD 88.5 INC 0.9 AZM 6394.9 TVD 2212.7 VS

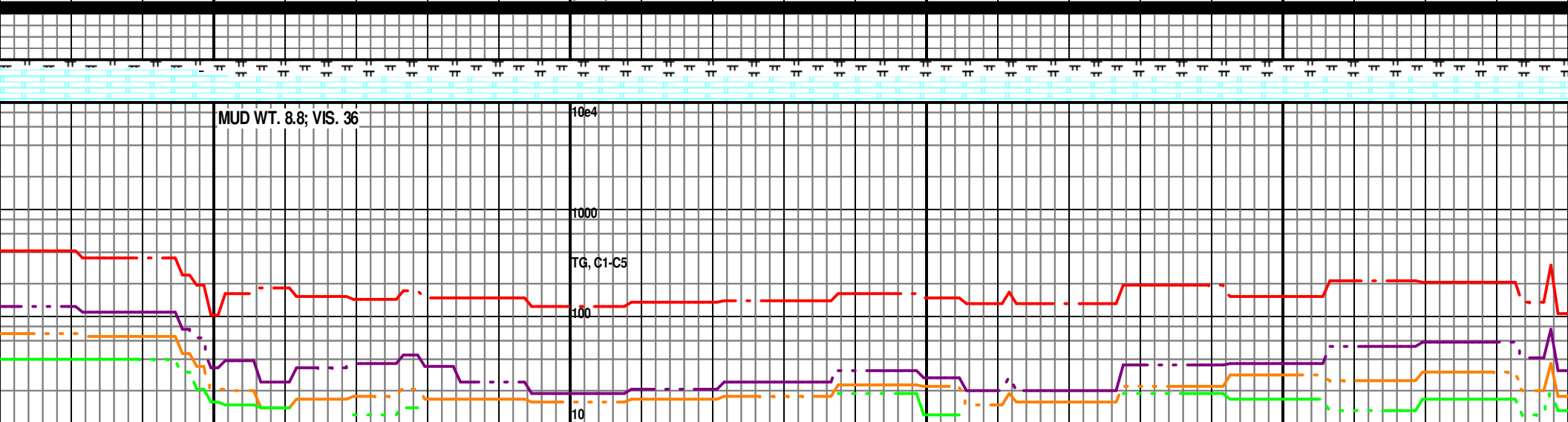


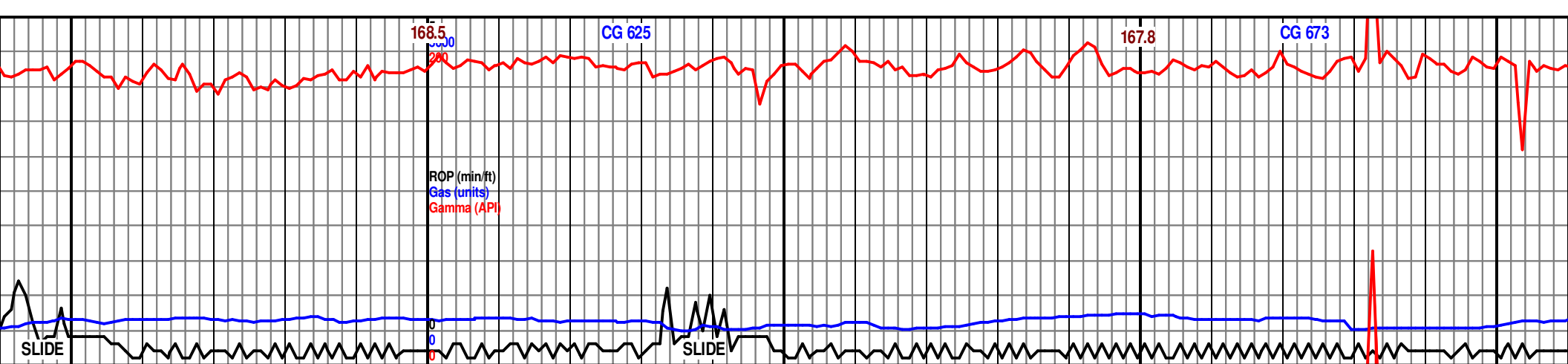


00					8950					9000					9050					9100				
70% CHK- LTGY-GY- SCAT LTBRN, TR WH, SFT-FRM, RTHY, V CALC.					70% CHK- LTGY-GY- SCAT LTBRN, TR WH, SFT-FRM, RTHY, V CALC.					6360 TVD Sub Sea (-1793)					65% CHK- LTGY-GY- SCAT LTBRN, TR WH, SFT-FRM, RTHY, V CALC.					65% CHK- LTGY-GY- SCAT LTBRN, TR WH, SFT-FRM, RTHY, V CALC.				
30% MRLSTN- DKGY-GY, SM GY/BRN, TR GY/BLK, SBPLTY, SBWXKY, CARB, CALC, FRM, TR STN, NO FLUOR, V FNT MLKY CUT.					30% MRLSTN- DKGY-GY, SM GY/BRN, TR GY/BLK, SBPLTY, SBWXKY, CARB, CALC, FRM, TR STN, NO FLUOR, V FNT MLKY CUT.					65% CHK- LTGY-GY- SCAT LTBRN, TR WH, SFT-FRM, RTHY, V CALC. 35% MRLSTN- DKGY-GY, SM GY/BRN, TR GY/BLK, SBPLTY, SBWXKY, CARB, CALC, FRM, TR STN, NO FLUOR, V FNT MLKY CUT.					35% MRLSTN- DKGY-GY, SME GY/BRN, TR GY/BLK, SBPLTY, SBWXKY, CARB, CALC, FRM, TR STN, NO FLUOR, V FNT MLKY CUT.					35% MRLSTN- DKGY-GY, SME GY/BRN, TR GY/BLK, SBPLTY, SBWXKY, CARB, CALC, FRM, TR STN, NO FLUOR, V FNT MLKY CUT.				
																		</						

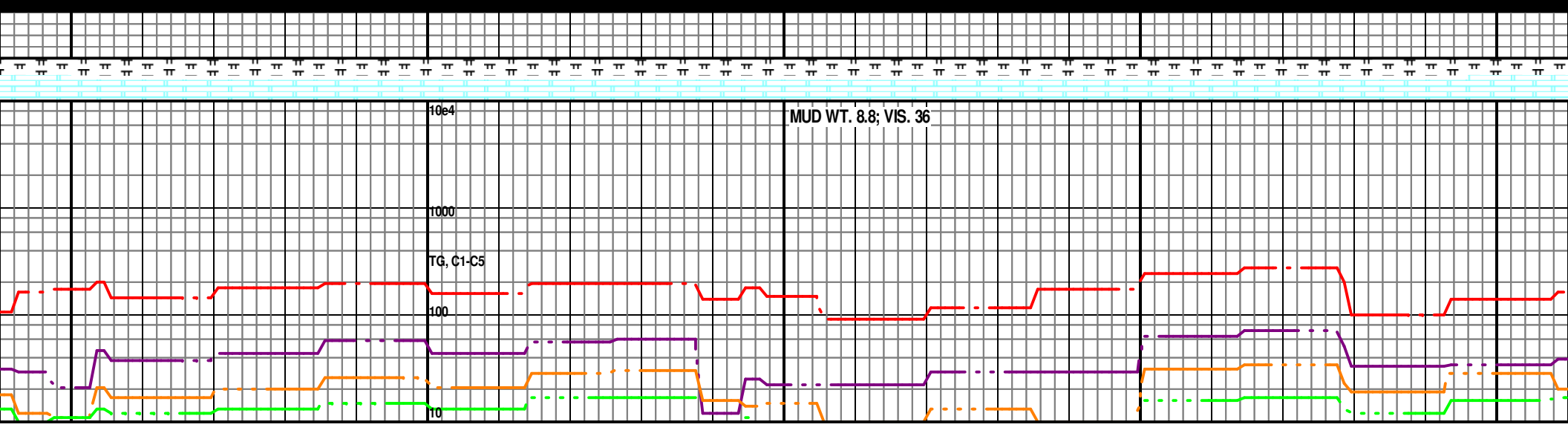


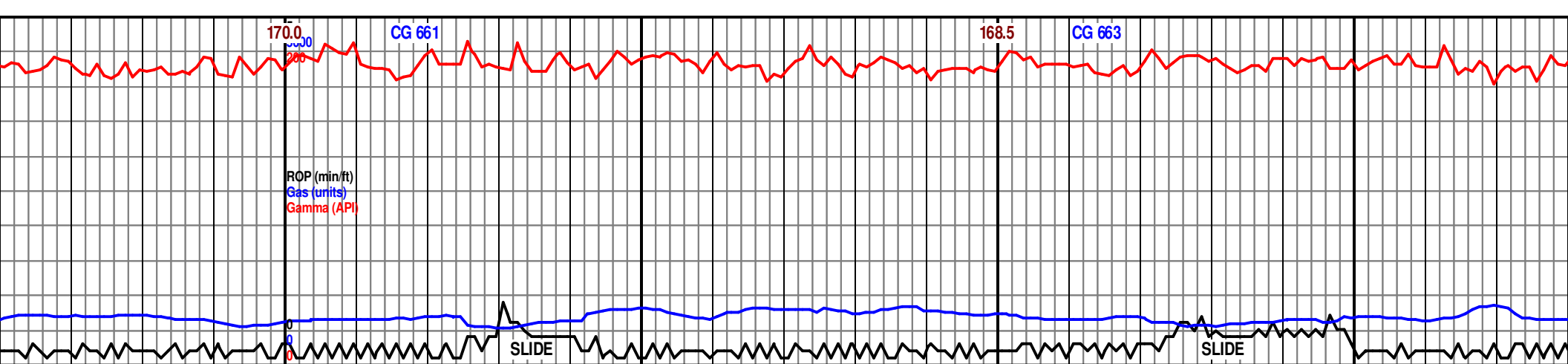
9150		9200		9250		9300	
AT LTBRN, TR WH, SFT-FRM, RTHY, SME GY/BRN, TR GY/BLK, SBPLTY, FRM, TR STN, NO FLUOR, V FNT		60% CHK- LTGY-GY- SCAT LTBRN, TR WH, SFT-FRM, RTHY, V CALC. 40% MRLSTN- DKGY-GY, SME GY/BRN, TR GY/BLK, SBPLTY, SBWXKY, CARB, CALC, FRM, TR STN, TR YEL PNPT FLUOR, NO CUT.		6360 TVD Sub Sea (-1793) 60% CHK- LTGY-GY- SCAT LTBRN, TR WH, SFT-FRM, RTHY, V CALC. 40% MRLSTN- DKGY-GY, SME GY/BRN, TR GY/BLK, SBPLTY, SBWXKY, CARB, CALC, FRM, TR STN, TR YEL PNPT FLUOR, NO CUT.		60% CHK- LTGY-GY- SCAT LTBRN, TR WH, SFT-FRM, RTHY, V CALC. 40% MRLSTN- DKGY-GY, SME GY/BRN, TR GY/BLK, SBPLTY, SBWXKY, CARB, CALC, FRM, TR STN, TR YEL PNPT FLUOR, NO CUT.	
9182 MD 89.5 INC 357.7 AZM 6396.84 TVD 2492.82 VS		6385 (-1818)		9277 MD 89.4 INC 358.9 AZM 6397.72 TVD 2586.80 VS		55% CHK- LTGY-GY- SCAT LTBRN, TR WH, SFT-FRM, RTHY, V CALC. 45% MRLSTN- DKGY-GY/BLK, SME GY/BRN, TR LT SBPLTY, SBWXKY, CARB, CALC, FRM, TR STN, TR FLUOR, NO CUT.	
ON GAS BUSTER 1' INTERMITTENT FLARE		6410 (-1843)					



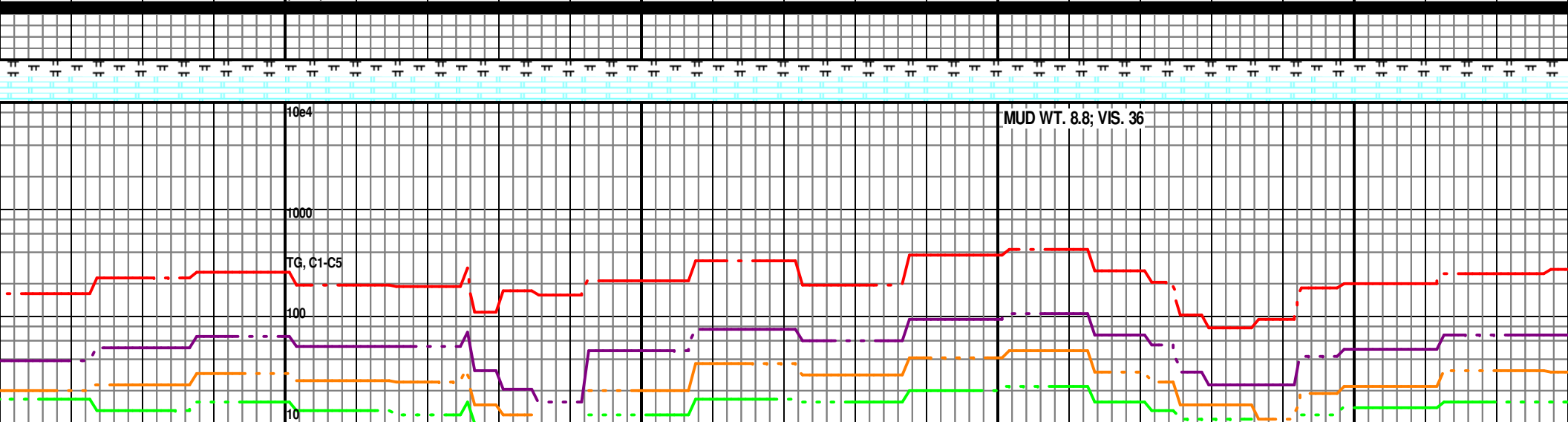


9350		9400		9450		9500		9550	
RM, RTHY, 55% CHK- LTGY-GY- SCAT LTBRN, TR WH, SFT-FRM, RTHY, V CALC. 45% MRLSTN- DKGY-GY/BLK, SME GY/BRN, TR LTGY, SBPLTY, SBWXKY, CARB, CALC, FRM, TR STN, TR YEL PNPT FLUOR, NO CUT.		6360 TVD Sub Sea (-1793) 55% CHK- LTGY-GY- SCAT LTBRN, TR WH, SFT-FRM, RTHY, V CALC. 45% MRLSTN- DKGY-GY/BLK, SME GY/BRN, TR LTGY, SBPLTY, SBWXKY, CARB, CALC, FRM, TR STN, TR YEL PNPT FLUOR, NO CUT.		55% CHK- LTGY-GY- SCAT LTBRN, TR WH, SFT-FRM, RTHY, V CALC. 45% MRLSTN- DKGY-GY/BLK, SME GY/BRN, TR LTGY, SBPLTY, SBWXKY, CARB, CALC, FRM, TR STN, TR YEL PNPT FLUOR, V FNT V SLW CUT.		11/8/13 @ 9533' MD 55% CHK- LTGY-GY- SCAT LTBRN, TR WH, SFT-FRM, RTHY, V CALC. 45% MRLSTN- DKGY-GY/BLK, SME GY/BRN, TR LTGY, SBPLTY, SBWXKY, CARB, CALC, FRM, TR STN, TR YEL PNPT FLUOR, V FNT V SLW CUT.		55% CHK- LTGY-GY- SCAT LTBRN, TR WH, SFT-FRM, RTHY, V CALC. 45% MRLSTN- DKGY-GY/BLK, SME GY/BRN, TR LTGY, SBPLTY, SBWXKY, CARB, CALC, FRM, TR STN, TR YEL PNPT FLUOR, V FNT V SLW CUT.	
9372 MD 89.5 INC 0.8 AZM 6398.67 TVD 2680.67 VS		6385 (-1818)		9468 MD 89.6 INC 0.1 AZM 6399.48 TVD 2775.37 VS				9568 MD 89.5 INC 0.1 AZM 6400.00 TVD 2875.00 VS	
ON GAS BUSTER 1' INTERMITTENT FLARE		6410 (-1843)						ON GAS BUSTER 1' INTERMITTENT FLARE	

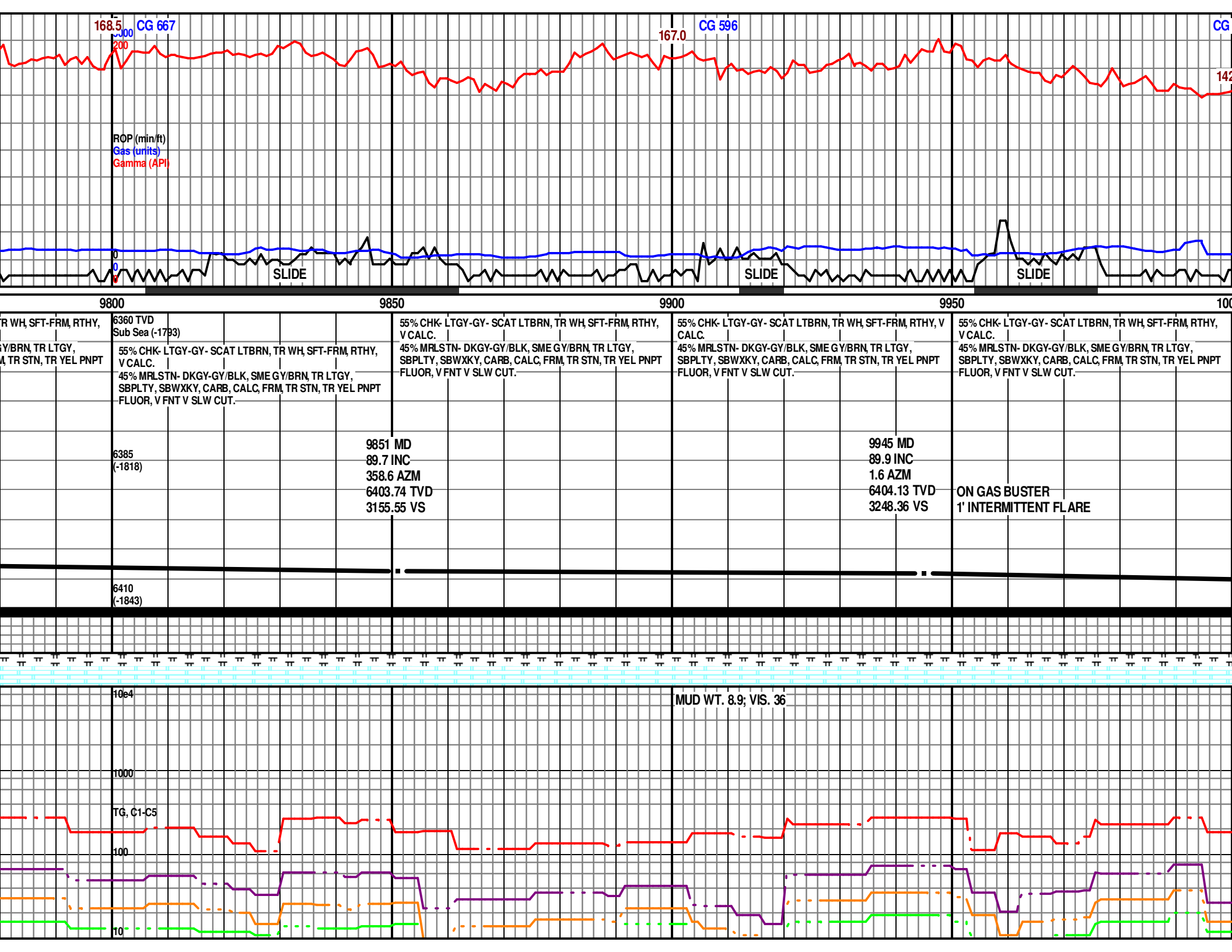


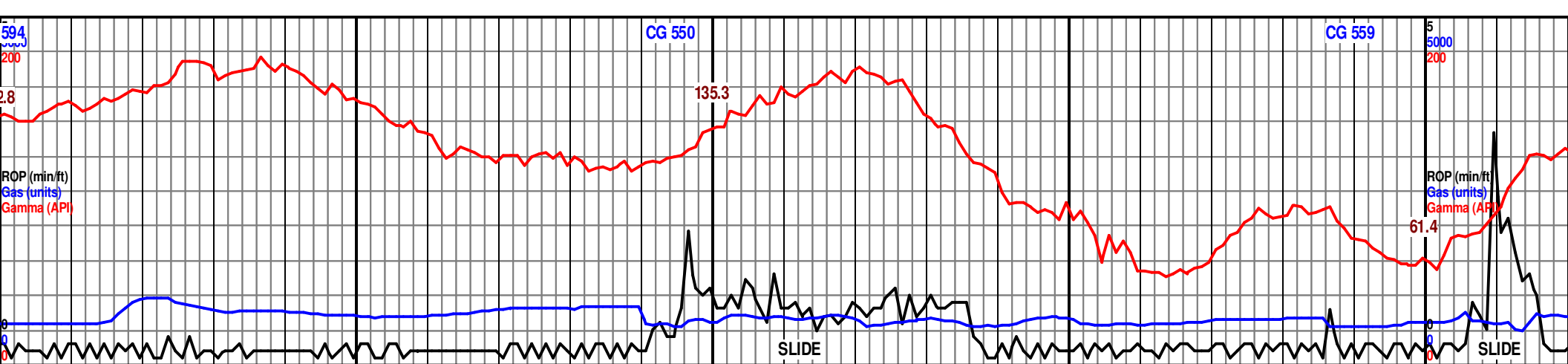


9600		9650		9700		9750	
55% CHK- LTGY-GY- SCAT LTBRN, TR WH, SFT-FRM, RTHY, V CALC. 45% MRLSTN- DKGY-GY/BLK, SME GY/BRN, TR LTGY, SBPLTY, SBWXKY, CARB, CALC, FRM, TR STN, TR YEL PNPT FLUOR, V FNT V SLW CUT.		55% CHK- LTGY-GY- SCAT LTBRN, TR WH, SFT-FRM, RTHY, V CALC. 45% MRLSTN- DKGY-GY/BLK, SME GY/BRN, TR LTGY, SBPLTY, SBWXKY, CARB, CALC, FRM, TR STN, TR YEL PNPT FLUOR, V FNT V SLW CUT.		55% CHK- LTGY-GY- SCAT LTBRN, TR WH, SFT-FRM, RTHY, V CALC. 45% MRLSTN- DKGY-GY/BLK, SME GY/BRN, TR LTGY, SBPLTY, SBWXKY, CARB, CALC, FRM, TR STN, TR YEL PNPT FLUOR, V FNT V SLW CUT.		55% CHK- LTGY-GY- SCAT LTBRN, TR WH, SFT-FRM, RTHY, V CALC. 45% MRLSTN- DKGY-GY/BLK, SME GY/BRN, TR LTGY, SBPLTY, SBWXKY, CARB, CALC, FRM, TR STN, TR YEL PNPT FLUOR, V FNT V SLW CUT.	
6360 TVD Sub Sea (-1793)		9660 MD 89.3 INC 357.2 AZM 6401.29 TVD 2965.74 VS				9755 MD 89.0 INC 356.8 AZM 6402.65 TVD 3060.21 VS	
6385 (-1818)							
6410 (-1843)						ON GAS BUSTER 1' INTERMITTENT FLARE	

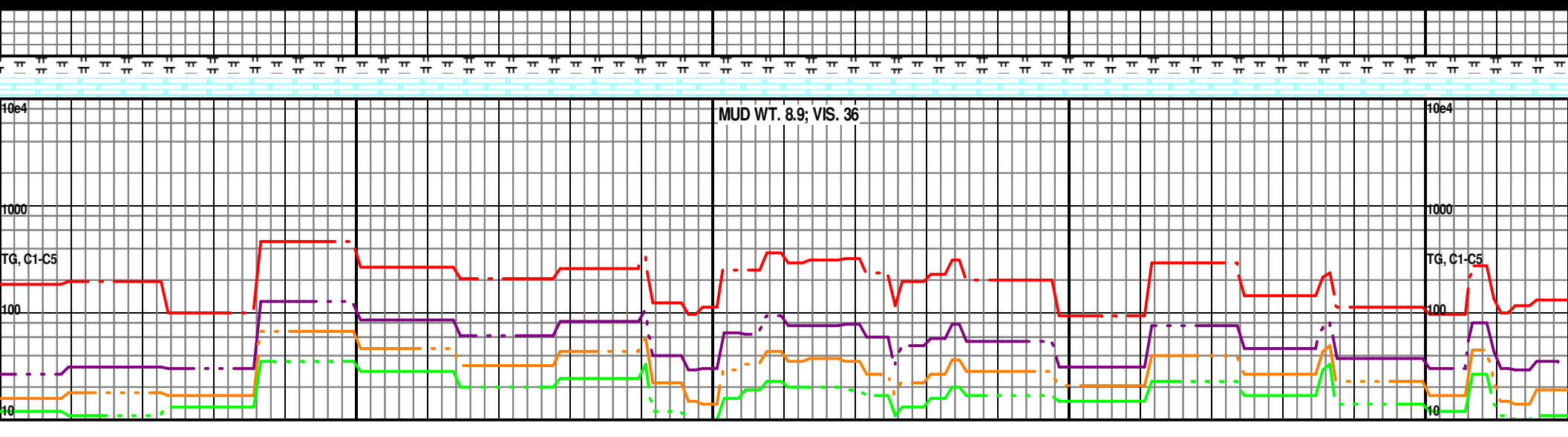


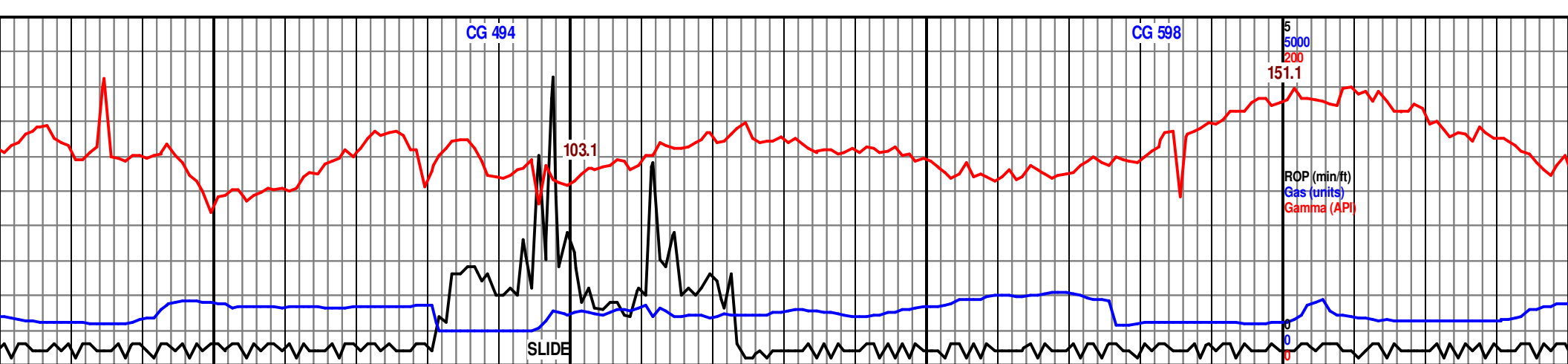




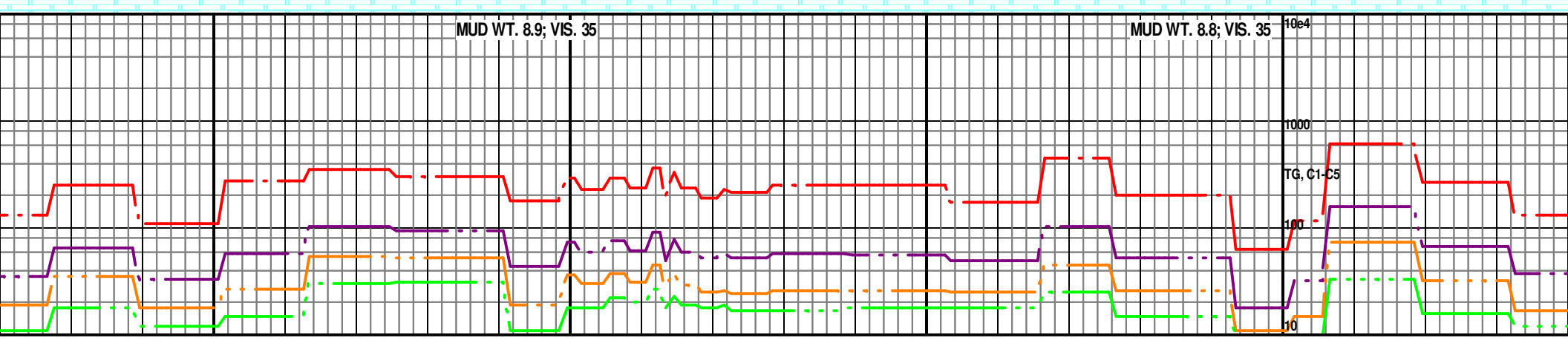
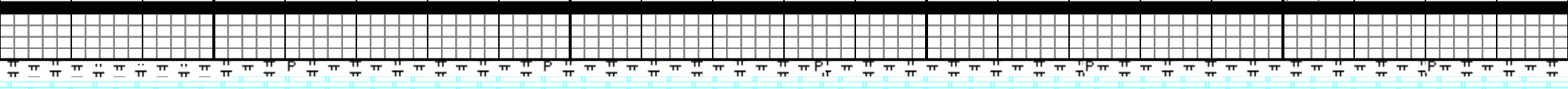


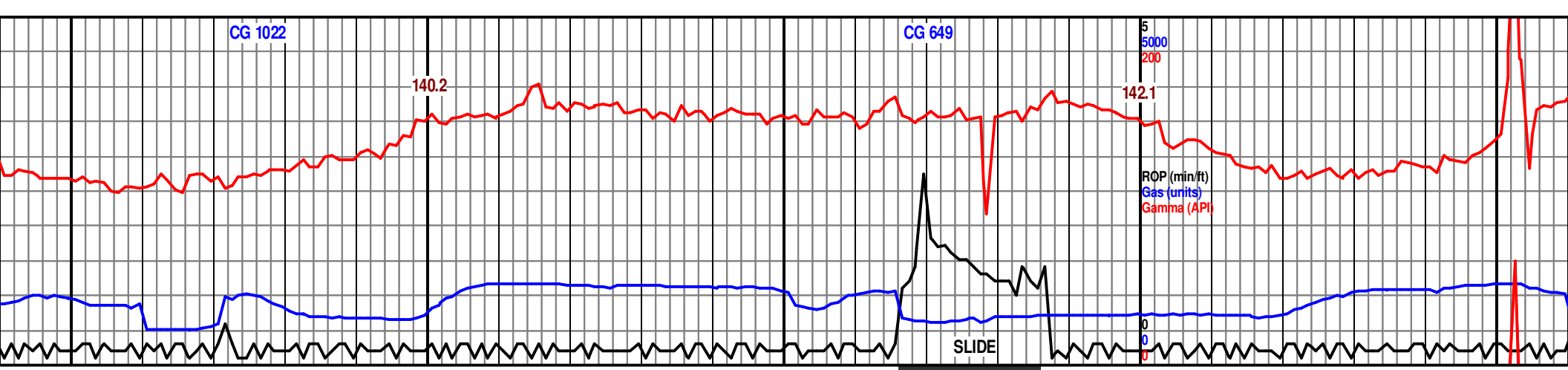
<p>6360 TVD Sub Sea (-1793)</p> <p>60% CHK- LTGY-GY- SCAT LTBRN, TR WH, SFT-FRM, RTHY, V CALC. 40% MRLSTN- DKGY-GY, SCATGY/BRN, TR LTGY, SBPLTY, SBWXKY, CARB, CALC, FRM, TR STN, TR YEL PNPT FLUOR, V FNT V SLW CUT.</p> <p>6385 (-1818)</p> <p>10040 MD 88.2 INC 0.9 AZM 6405.74 TVD 3341.82 VS</p> <p>6410 (-1843)</p>	<p>60% CHK- LTGY-GY- SCAT LTBRN, TR WH, SFT-FRM, RTHY, V CALC. 40% MRLSTN- DKGY-GY, SCATGY/BRN, TR LTGY, SBPLTY, SBWXKY, CARB, CALC, FRM, TR STN, TR YEL PNPT FLUOR, V FNT V SLW CUT.</p> <p>10135 MD 92.1 INC 3.2 AZM 6405.52 TVD 3435.03 VS</p>	<p>60% CHK- LTGY-GY- SCAT LTBRN, TR WH, SFT-FRM, RTHY, V CALC. 40% MRLSTN- DKGY-GY, SCATGY/BRN, TR LTGY, SBPLTY, SBWXKY, CARB, CALC, FRM, TR STN, TR YEL PNPT FLUOR, V FNT V SLW CUT.</p> <p>ON GAS BUSTER 1' INTERMITTENT FLARE</p>	<p>60% CHK- LTGY-GY- SCAT LTBRN, TR WH, SFT-FRM, RTHY, V CALC. 40% MRLSTN- DKGY-GY, SCATGY/BRN, TR LTGY, SBPLTY, SBWXKY, CARB, CALC, FRM, TR STN, TR YEL PNPT FLUOR, V FNT V SLW CUT.</p> <p>6385 (-1818)</p> <p>6410 (-1843)</p>
---	---	--	---



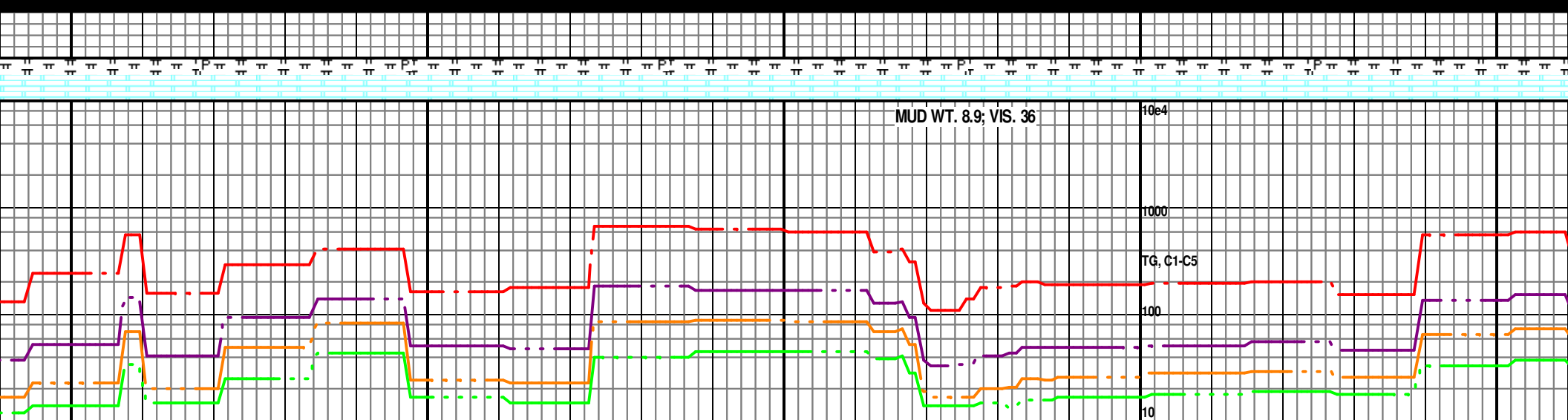


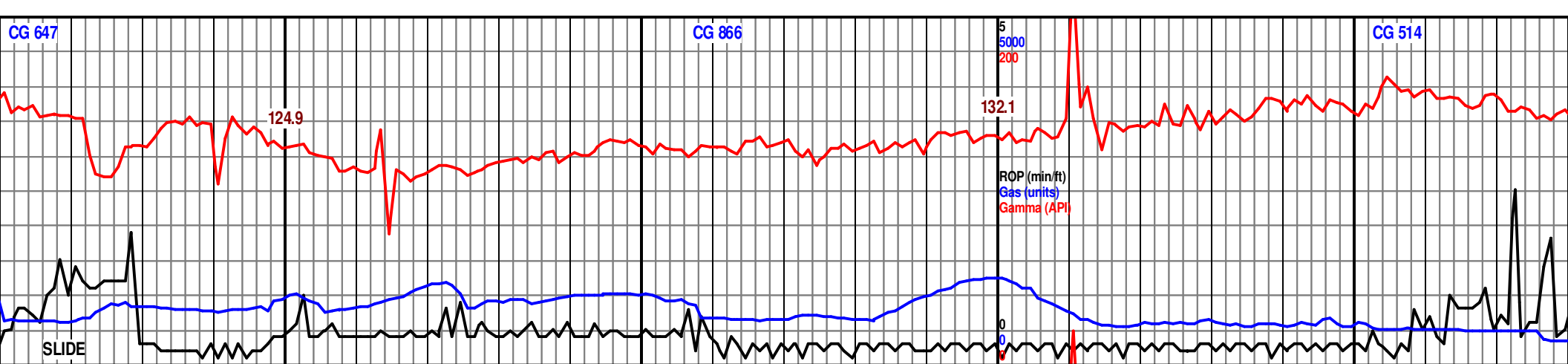
10250		10300		10350		10400	
60% CHK- LTGY-GY- SCAT LTBRN, TR WH, SFT-FRM, RTHY, V CALC. 40% MRLSTN- DKGY-GY, SCATGY/BRN, TR LTGY, SBPLTY, SBWXKY, CARB, CALC, FRM, TR CALC & PYR, TR STN, TR SPTY FLUOR, V FNT V SLW CUT.		60% CHK- LTGY-GY- SCAT LTBRN, TR WH, SFT-FRM, RTHY, V CALC. 40% MRLSTN- DKGY-GY, SCATGY/BRN, TR LTGY, SBPLTY, SBWXKY, CARB, CALC, FRM, TR CALC & PYR, TR STN, TR SPTY FLUOR, V FNT V SLW CUT.		60% CHK- LTGY-GY- SCAT LTBRN, TR WH, SFT-FRM, RTHY, V CALC. 40% MRLSTN- DKGY-GY, SCATGY/BRN, TR LTGY, SBPLTY, SBWXKY, CARB, CALC, FRM, TR CALC & PYR, TR STN, TR SPTY FLUOR, V FNT V SLW CUT.		6360 TVD Sub Sea (-1793) 60% CHK- LTGY-GY- SCAT LTBRN, TR WH, SFT-FRM, RTHY, V CALC. 40% MRLSTN- DKGY-GY, SCATGY/BRN, TR LTGY, SBPLTY, SBWXKY, CARB, CALC, FRM, TR CALC & PYR, TR STN, TR SPTY FLUOR, V FNT V SLW CUT.	
10230 MD 92.6 INC 3.3 AZM 6401.64 TVD 3527.80 VS		10325 MD 91.1 INC 1.6 AZM 6398.58 TVD 3620.86 VS		ON GAS BUSTER 1' INTERMITTENT FLARE		10419 MD 90.7 INC 2.1 AZM 6397.12 TVD 3713.17 VS	
						6385 (-1818)	
						6410 (-1843)	



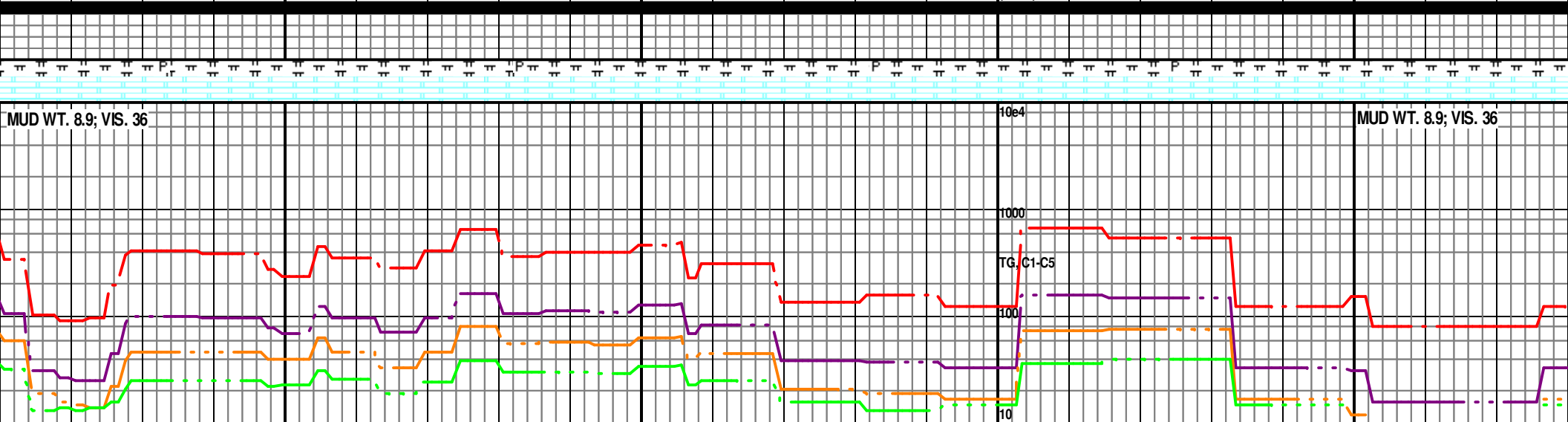


10450				10500				10550				10600				10650				
M, RTHY, V SBPLTY, TN, TR	60% CHK- LTGY-GY- SCAT LTBRN, TR WH, SFT-FRM, RTHY, V CALC. 40% MRLSTN- DKGY-GY, SCATGY/BRN, TR LTGY, SBPLTY, SBWXKY, CARB, CALC, FRM, TR CALC & PYR, TR STN, TR SPTY FLUOR, SL RESID CUT.				60% CHK- LTGY-GY- SCAT LTBRN, TR WH, SFT-FRM, RTHY, V CALC. 40% MRLSTN- DKGY-GY, SCATGY/BRN, TR LTGY, SBPLTY, SBWXKY, CARB, CALC, FRM, TR CALC & PYR, TR STN, TR SPTY FLUOR, SL RESID CUT.				60% CHK- LTGY-GY- SCAT LTBRN, TR WH, SFT-FRM, RTHY, V CALC. 40% MRLSTN- DKGY-GY, SCATGY/BRN, TR LTGY, SBPLTY, SBWXKY, CARB, CALC, FRM, TR CALC & PYR, TR STN, TR SPTY FLUOR, SL RESID CUT.				6360 TVD Sub Sea (-1793) 60% CHK- LTGY-GY- SCAT LTBRN, TR WH, SFT-FRM, RTHY, V CALC. 40% MRLSTN- DKGY-GY, SCATGY/BRN, TR LTGY, SBPLTY, SBWXKY, CARB, CALC, FRM, TR CALC & PYR, TR STN, TR SPTY FLUOR, SL RESID CUT.				60% CHK- L CALC. 40% MRLST SBWXKY, C SPTY FLUOR			
					10514 MD 91.1 INC 1.9 AZM 6395.61 TVD 3806.42 VS				ON GAS BUSTER 1' INTERMITTENT FLARE				6385 10608 MD (-181) 87.6 INC 1.1 AZM 6396.64 TVD 3898.82 VS							
																6410 (-1843)				





10700		10750		10800		10850	
60% CHK- LTGY-GY- SCAT LTBRN, TR WH, SFT-FRM, RTHY, V 40% MRLSTN- DKGY- GY- GYBRN, TR LTGY, SBPLTY, SBWXKY, CARB, CALC, FRM, TR CALC & PYR, TR STN, TR BRT YEL SPTY FLUOR, SL RESID CUT.		60% CHK- LTGY-GY- SCAT LTBRN, TR WH, SFT-FRM, RTHY, V 40% MRLSTN- DKGY- GY- GYBRN, TR LTGY, SBPLTY, SBWXKY, CARB, CALC, FRM, TR CALC & PYR, TR STN, TR BRT YEL SPTY FLUOR, SL RESID CUT.		60% CHK- LTGY-GY- SCAT LTBRN, TR WH, SFT-FRM, RTHY, V 40% MRLSTN- DKGY- GY- GYBRN, TR LTGY, SBPLTY, SBWXKY, CARB, CALC, FRM, TR CALC & PYR, TR STN, TR BRT YEL SPTY FLUOR, SL RESID CUT.		60% CHK- LTGY-GY- SCAT LTBRN, TR WH, SFT-FRM, RTHY, V 40% MRLSTN- DKGY- GY- GYBRN, TR LTGY, SBPLTY, SBWXKY, CARB, CALC, FRM, TR CALC & PYR, TR STN, TR BRT YEL SPTY FLUOR, SL RESID CUT.	
10704 MD 89.3 INC 1.6 AZM 6399.24 TVD 3993.22 VS		ON GAS BUSTER 1' INTERMITTENT FLARE		10800 MD 90.0 INC <sup>385</sup> 1.8 AZM <sup>1818</sup> 6399.86 TVD 4087.55 VS		NO FLARE	
				6410 (-1843)			



CG 386

135.4

10900

10950

TR WH, SFT-FRM, RTHY, V

60% CHK- LTGY-GY- SCAT LTBRN, TR WH, SFT-FRM, RTHY, V  
CALC.

LTGY, SBPLTY,  
& PYR, TR STN, TR BRT

40% MRLSTN- DKGY- GY- GYBRN, TR LTGY, SBPLTY,  
SBWXY, CARB, CALC, FRM, TR CALC & PYR, TR STN, TR BRT  
YEL SPTY FLUOR, SL RESID CUT.

TD AT 10965' MD, 6399.46' TVD ON  
11/8/2013 AT 1425 HRS.

PROJECTION TO BIT

10911 MD  
90.2 INC  
2.4 AZM  
6399.67 TVD  
4196.49 VS

10965 MD  
90.2 INC  
2.4 AZM  
6399.46 TVD  
4249.43 VS

MUD WT. 8.9; VIS. 35