

**MUD LOG**  
**WellSight Systems**  
Scale 1:240 (5"=100') Imperial  
Measured Depth Log

Well Name: State North Platte 24-21-26HNC  
Location: SE/SW Sec. 26-T5N-R63W  
License Number: API 05-123-38307-00  
Spud Date: 11/2/2013  
Surface Coordinates: 539 FSL, 2383 FEL  
Region: DJ Basin  
Drilling Completed: 11/5/2013  
Bottom Hole Coordinates: 470 FNL, 2122 FWL  
Ground Elevation (ft): 4550  
Logged Interval (ft): 6100 To: 6865  
Formation: Niobrara  
Type of Drilling Fluid: Water base  
K.B. Elevation (ft): 4567  
Total Depth (ft): 6865

Printed by MUD.LOG from WellSight Systems 1-800-447-1534 [www.WellSight.com](http://www.WellSight.com)

**OPERATOR**

Company: Bonanza Creek Energy Inc.  
Address: 410 17th Street, Suite 1500  
Denver, CO 80202

**GEOLOGIST**

Name: Gabriel Genitempo, Jennifer Anderson  
Company: WEATHERFORD SLS/TOOKE ROCKIES  
Address: PO BOX 435  
CASPER, WY 82602  
307.265.2124

**Cores**

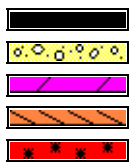
**DSTs**

**Comments**

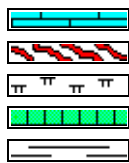
**ROCK TYPES**



Anhy  
Bent  
Brec  
Cht  
Clyst



Coal  
Congl  
Dol  
Gyp  
Igne



Lmst  
Meta  
Mrlst  
Salt  
Shale



Shcol  
Shgy  
Sltst  
Ss  
Till



Chlk

## ACCESSORIES

### MINERAL

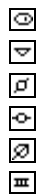
Anhy  
Arggrn  
Arg  
Bent  
Bit  
Brecfrag  
Calc  
Carb  
Chtdk  
Chtlit  
Dol  
Feldspar  
Ferrpel  
Ferr  
Glau



Gyp  
Hvymin  
Kaol  
Marl  
Minxl  
Nodule  
Phos  
Pyr  
Salt  
Sandy  
Silt  
Sil  
Sulphur  
Tuff

### FOSSIL

Algae  
Amph  
Belm  
Bioclst  
Brach  
Bryozoa  
Cephal  
Coral  
Crin  
Echin  
Fish  
Foram  
Fossil  
Gastro  
Oolite



Ostra  
Pelec  
Pellet  
Pisolite  
Plant  
Strom

### STRINGER

Anhy  
Arg  
Bent  
Coal  
Dol  
Gyp  
Ls  
Mrst

Siltstrg  
Ssstrg

### TEXTURE

Boundst  
Chalky  
Cryxln  
Earthy  
Finexln  
Grainst  
Lithogr  
Microxln  
Mudst  
Packst  
Wackest

## OTHER SYMBOLS

### POROSITY

Earthy  
Fenest  
Fracture  
Inter  
Moldic  
Organic  
Pinpoint



Vuggy

### SORTING

Well  
Moderate  
Poor

### ROUNDING

Rounded  
Subrnd  
Subang  
Angular



Spotted  
Ques  
Dead

### INTERVAL

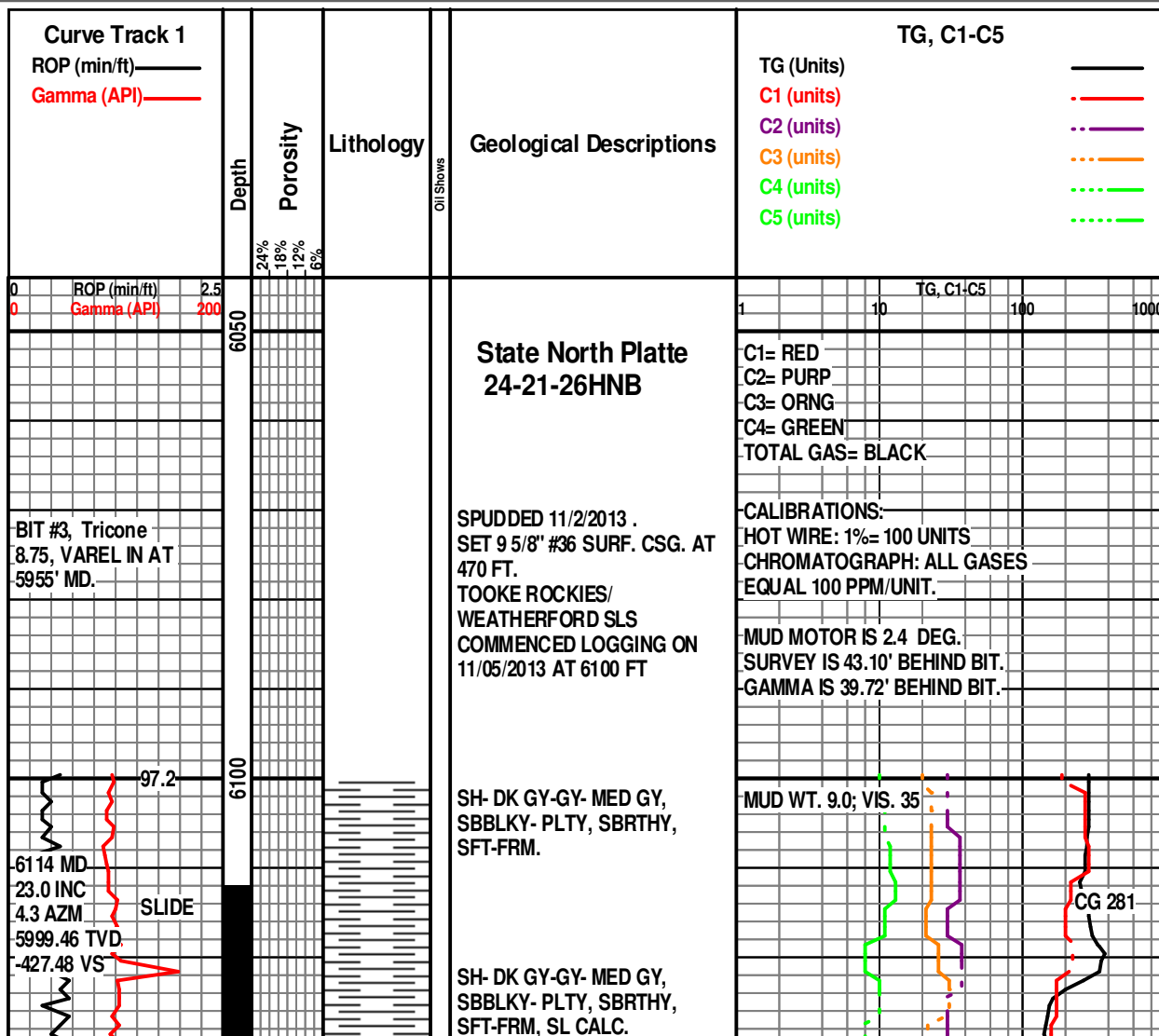
Core  
Dst

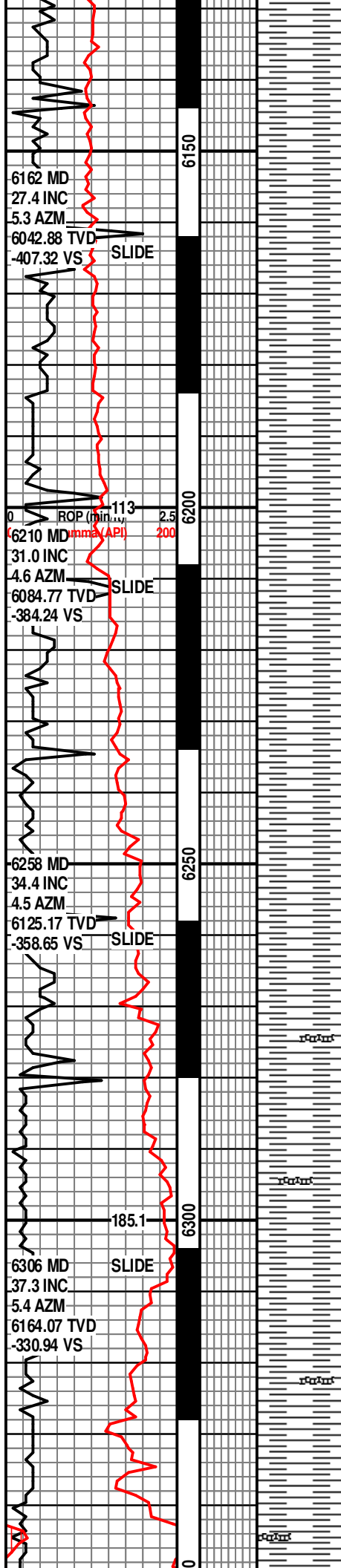
### EVENT

Rft  
Sidewall

### OIL SHOW

Even





SH- DK GY-GY- MED GY, SCAT  
GY/BRN, SBBLKY- PLTY,  
SBRTHY, SFT-FRM, SL CALC.

SH- DK GY-GY- MED GY,  
SBBLKY- PLTY, SBRTHY,  
SFT-FRM, SL CALC, TR INTBD  
SLTST.

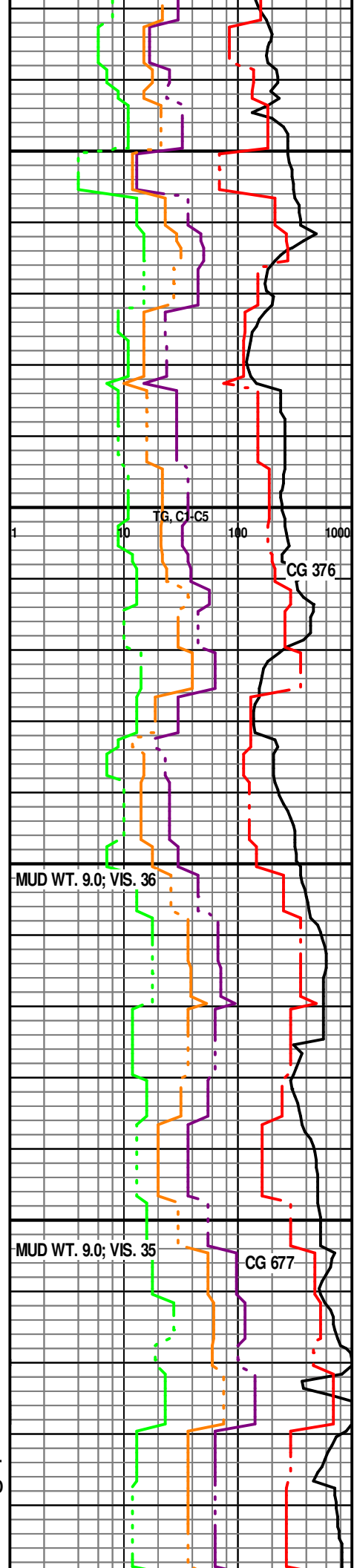
SH- MED-DK GY/BRN, SCAT  
MED GY, SBPLTY-PLTY,  
SBRTHY, SFT-FRM.

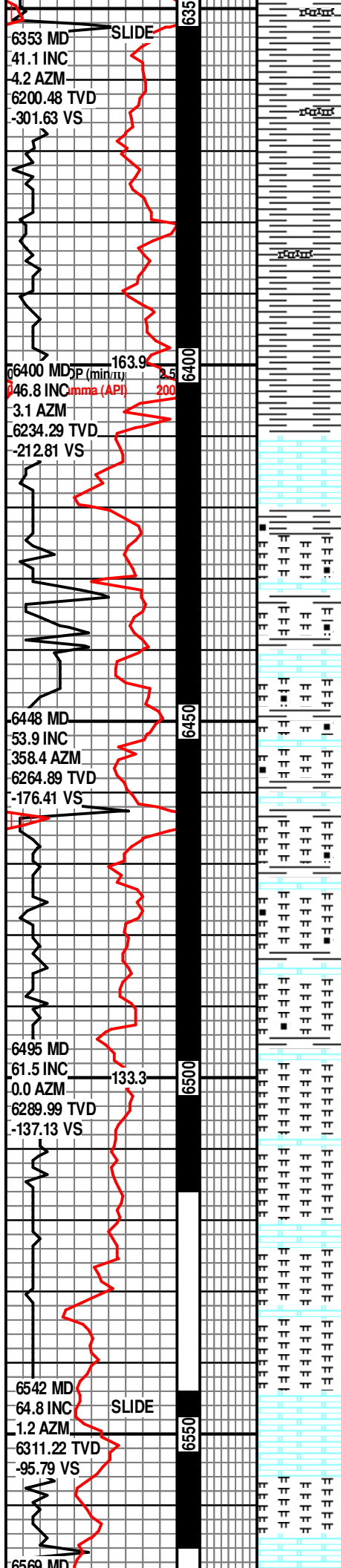
SH- MED-DK GY/BRN, SCAT  
MED GY, SBPLTY-PLTY,  
SBRTHY, SFT-FRM.

SH- DK GY-GY- MED GY,  
SBBLKY- PLTY, SBRTHY,  
SFT-FRM, SL CALC, TR BENT.

SH- DK GY-MED GY, SCAT LT  
GY, SBPLTY, SBRTHY, MOD  
FRM, SL CALC, TR BENT.

SH- DK GY- MED GY- GY, SCAT  
LT GY, SBPLTY, SBRTHY, MOD  
FRM, SL CALC, TR BENT.





SH- DK GY- MED GY- GY, SCAT  
LT GY, SBBLKY- PLTY,  
SBRTHY, MOD FRM, SL CALC,  
TR BENT.

SH- DK GY- GY- MED GY,  
SBBLKY- PLTY, SBRTHY,  
SFT-FRM, SL CALC, TR BENT.

80%CHK- DK GY- BRN- LT GY,  
SBBLKY- SFT-FRM, RTHY, V  
CALC, TR BENT, 20% SH-  
DKGY-GY, SBBLKY- PLTY,  
SFT- FRM, CARB, CALC.

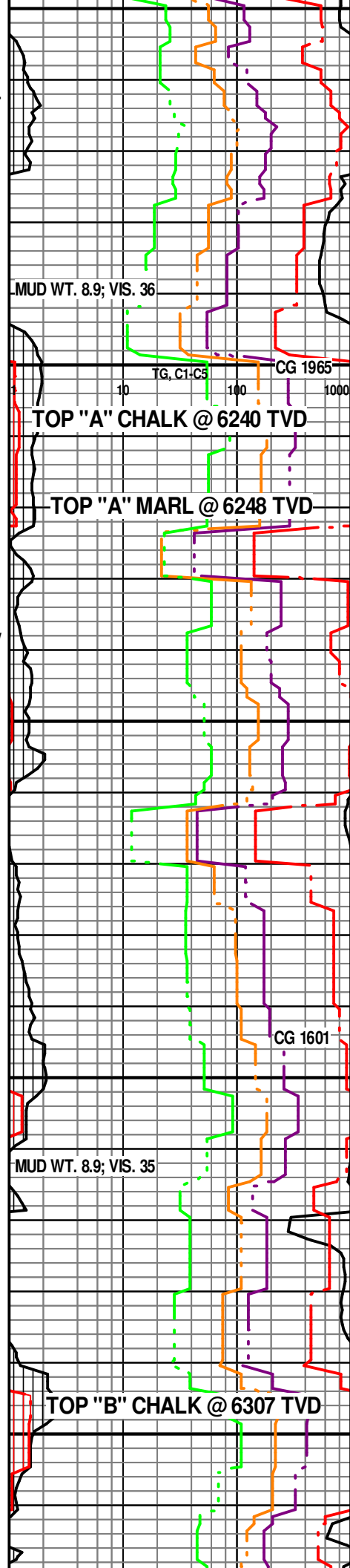
75% MRLST- DK GY- GY ,  
MOTL, BLKY- PLTY, SBWXY, V  
CALC- LMY, CARB , SFT-FRM,  
25% CHK- LTGY- LT BRN- TN,  
SFT-FRM, RTHY, V CALC.

80% MRLST- DK GY- GY ,  
MOTL, BLKY- PLTY, SBWXY, V  
CALC- LMY, CARB , SFT-FRM,  
20% CHK- LTGY- LT BRN, SM  
GY BRN, SFT-FRM, RTHY, V  
CALC, TR PYR & CALC.

80% MRLST- DK GY- GY ,  
MOTL, BLKY- PLTY, SBWXY, V  
CALC- LMY, CARB , SFT-FRM,  
20% CHK- LTGY- LT BRN-GY  
BRN , SFT- FRM, RTHY, V  
CALC.

80% MRLST- DK GY- GY ,  
MOTL, BLKY- PLTY, SBWXY, V  
CALC- LMY, CARB , SFT-FRM,  
20% CHK- LTGY- LT BRN-GY  
BRN , SFT- FRM, RTHY, V  
CALC.

80% CHK- LTGY- LT BRN,  
SFT-FRM, RTHY, V CALC,  
20% MRLST- DK GY- GY, GY  
BRN, MOTL, BLKY- PLTY,  
SBWXY, V CALC- LMY, CARB ,  
SFT- FRM, TR STN



MUD WT. 8.9; VIS. 36

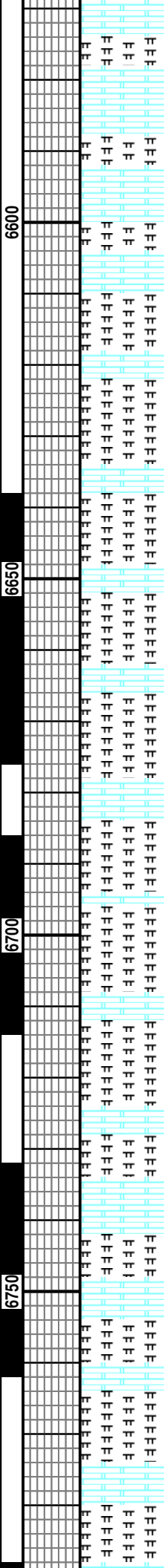
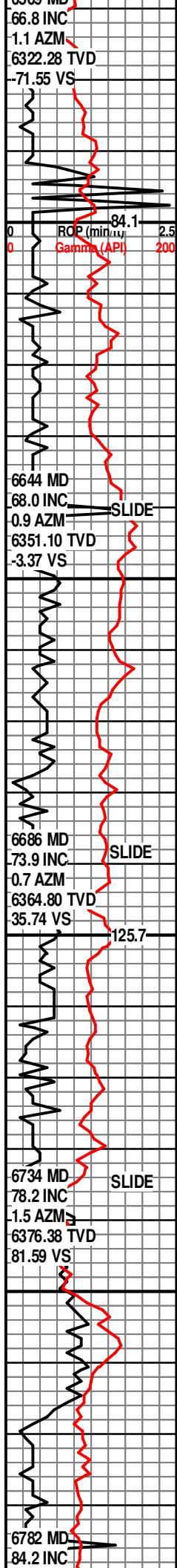
TOP "A" CHALK @ 6240 TVD

TOP "A" MARL @ 6248 TVD

CG 1601

MUD WT. 8.9; VIS. 35

TOP "B" CHALK @ 6307 TVD



80% CHK- LTGY- LT BRN,  
SFT-FRM, RTHY, V CALC,  
20% MRLST- DK GY- GY, GY  
BRN, MOTL, BLKY- PLTY,  
SBWXY, V CALC- LMY, CARB,  
SFT- FRM, TR PYR, TR STN

80% CHK- LTGY- LT BRN,  
SFT-FRM, RTHY, V CALC,  
20% MRLST- DK GY- GY, GY  
BRN, MOTL, BLKY- PLTY,  
SBWXY, V CALC- LMY, CARB,  
SFT- FRM, TR, TR STN

80% MRLST- DK GY- GY,  
MOTL, BLKY- PLTY, SBWXY, V  
CALC- LMY, CARB, SFT-FRM,  
20% CHK- LTGY- LT BRN, SM  
GY BRN, SFT- FRM, RTHY, V  
CALC, TR CALC, TR STN.

80% MRLST- DK GY- GY,  
MOTL, BLKY- PLTY, SBWXY, V  
CALC- LMY, CARB, SFT-FRM,  
20% CHK- LTGY- LT BRN, SM  
GY BRN, SFT- FRM, RTHY, V  
CALC, TR CALC, PYR & BENT,  
SPTY YEL FLOR, TR STN.

80% MRLST- DK GY- GY,  
MOTL, BLKY- PLTY, SBWXY, V  
CALC- LMY, CARB, SFT-FRM,  
20% CHK- LTGY- LT BRN, SM  
GY BRN, SFT- FRM, RTHY, V  
CALC, TR CALC, PYR & BENT,  
SPTY YEL FLOR, TR STN.

70% MRLST- DK GY- GY,  
MOTL, BLKY- PLTY, SBWXY, V  
CALC- LMY, CARB, SFT-FRM,  
30% CHK- LTGY- LT BRN, SM  
GY BRN, SFT- FRM, RTHY, V  
CALC, TR PYR, TR STN.

70% MRLST- DK GY- GY,  
MOTL, BLKY- PLTY, SBWXY, V  
CALC- LMY, CARB, SFT-FRM,  
30% CHK- LTGY- LT BRN, SM  
GY BRN, SFT- FRM, RTHY, V  
CALC, TR PYR, TR STN.

