



**COMPLETION
& PRODUCTION
SERVICES CO.**

**Gamma Ray,
Cement Bond,
Variable Density,
CCL**

Company Noble Energy		Company Noble Energy	
Well Fritzler B 2-19		Well Fritzler B 2-19	
Field Wattenberg		Field Wattenberg	
County Weld		County Weld	
State Colo		State Colo	
Location: API #: 0512333226		Other Services	
SEC 2 TWP 5W RGE 64W		C NWM4	
Permanent Datum		Elevation	
Log Measured From		K.B.	
Drilling Measured From		D.F.	
		G.L.	
Date	8-21-13		
Run Number	one		
Depth Driller			
Depth Logger	1631		
Bottom Logged Interval	1630		
Top Log Interval	surface		
Open Hole Size			
Type Fluid	water		
Density / Viscosity			
Max. Recorded Temp.			
Estimated Cement Top			
Time Well Ready			
Time Logger on Bottom			
Equipment Number	702		
Location			
Recorded By	Chuck Briggs		
Witnessed By	Mr. Ryan Beam		
Borehole Record		Tubing Record	
Run Number	Bit	From	To
		Size	Weight
			From
			To
Casing Record	Size	Wgt/Ft	Top
Surface String			Bottom
Prot. String			
Production String	4 1/2		Surface
Liner			T. D.

<<< Fold Here >>>

All interpretations are opinions based on inferences from electrical or other measurements and we cannot and do not guarantee the accuracy or correctness of any interpretation, and we shall not, except in the case of gross or willful negligence on our part, be liable or responsible for any loss, costs, damages, or expenses incurred or sustained by anyone resulting from any interpretation made by any of our officers, agents or employees. These interpretations are also subject to our general terms and conditions set out in our current Price Schedule.

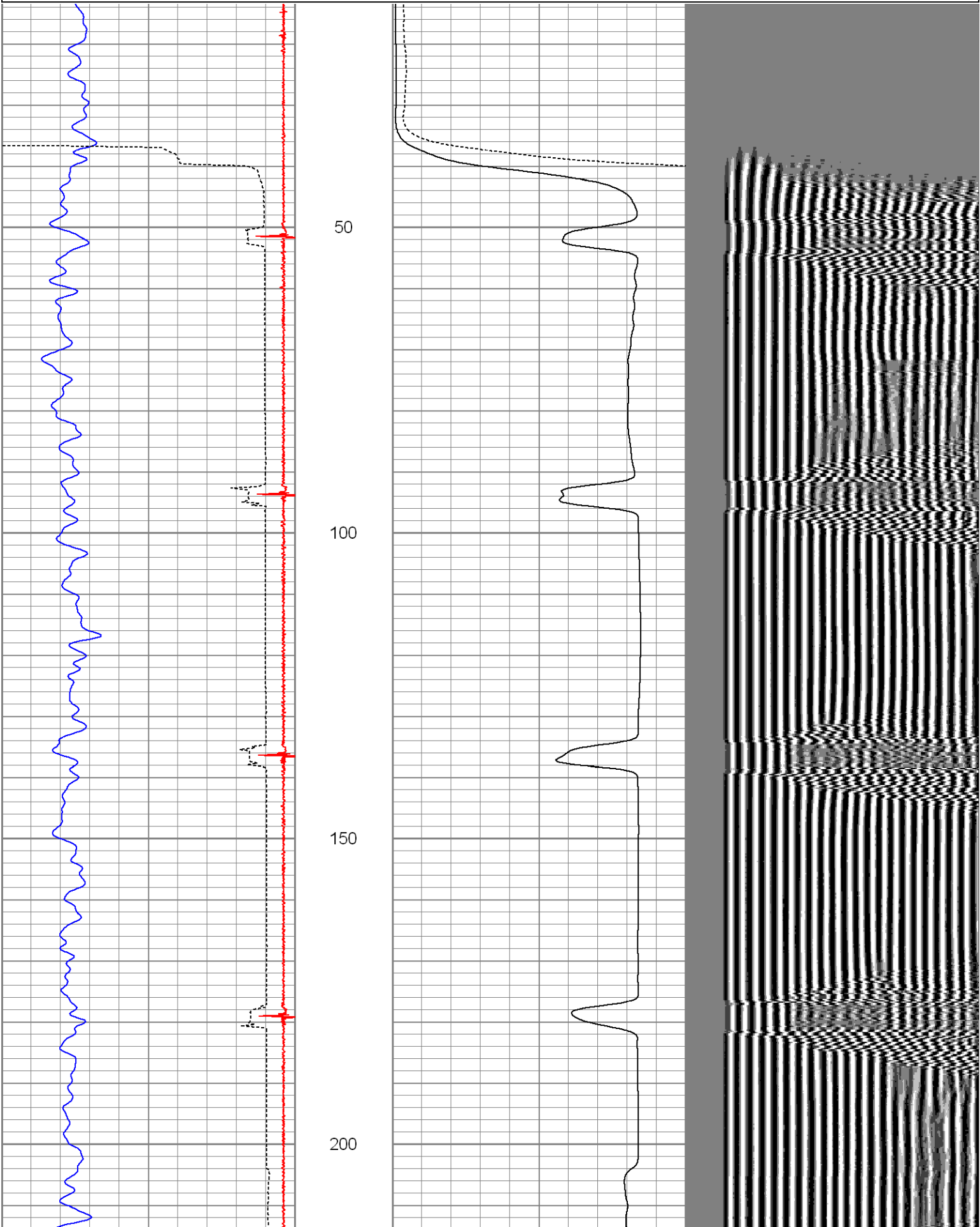
Comments

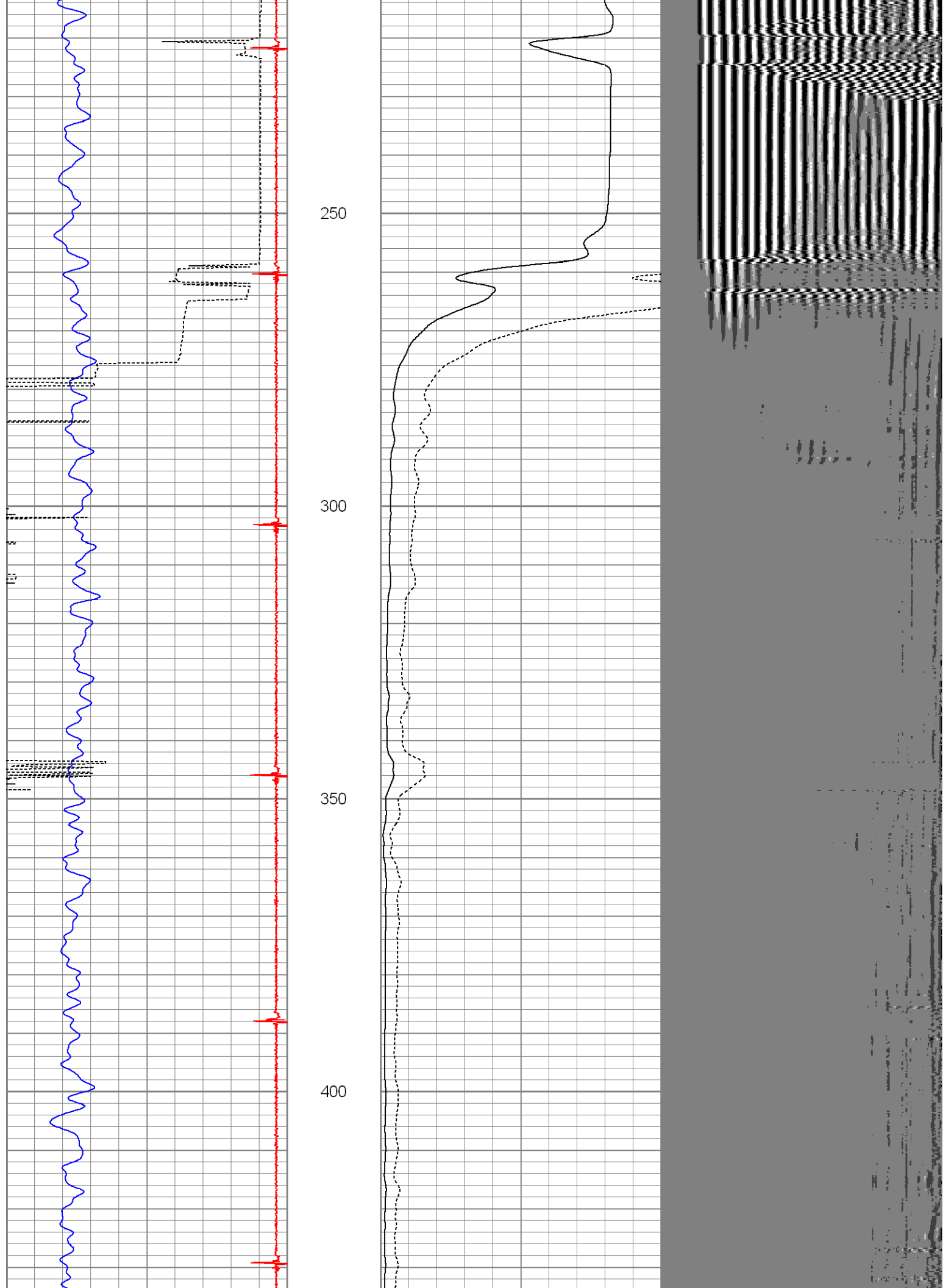
Database File: fritzlerb212cbl.db
Dataset Pathname: pass9
Presentation Format: nuexcbl
Dataset Creation: Wed Aug 21 08:31:46 2013 by Calc Open-Cased 071220
Charted by: Depth in Feet scaled 1:240

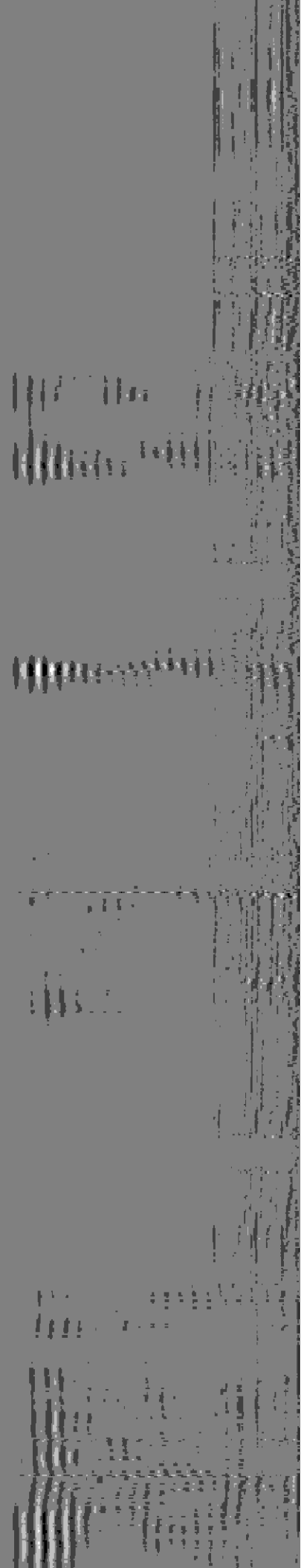
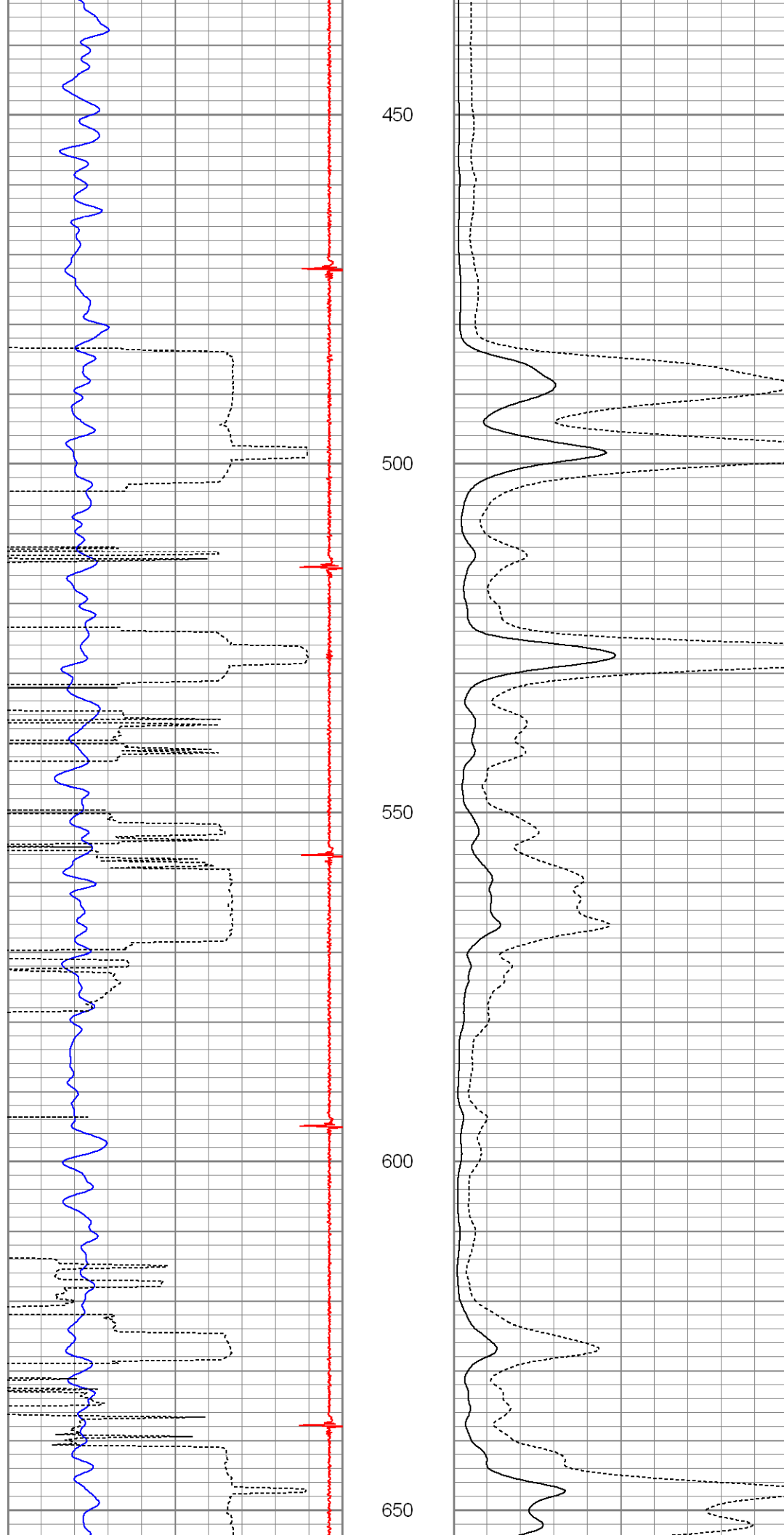
8	CCL	-0.3
0	Gamma Ray (GAPI)	200
340	TT3 (usec)	200

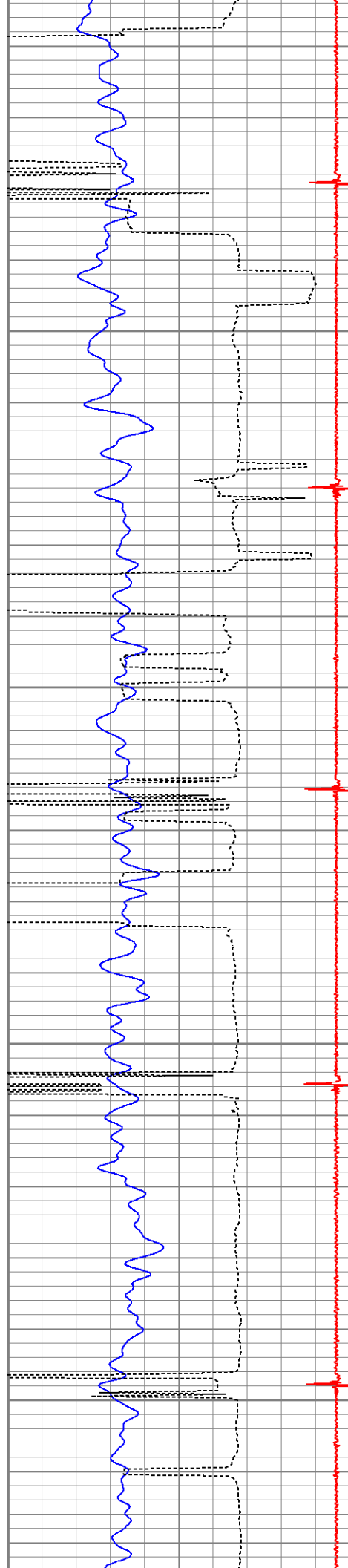
0	Amplified Amplitude (mV)	30
0	Amplitude (mV)	100

200 V D L 1200









700

750

800

850

