

Location:	COLORADO	Slot:	SLOT#28 BADDING 14N-2HZ (2411'FSL & 1411'FWL, SEC.35)
Field:	WELD COUNTY (KERR MCGEE)	Well:	BADDING 14N-2HZ
Facility:	SEC.35-T2N-R66W	Wellbore:	BADDING 14N-2HZ PWB

Plot reference wellpath is BADDING 14N-2HZ (REV-A.0) PWP

True vertical depths are referenced to ENSIGN 145 (RKB)

Grid System: NAD83 / Lambert Colorado SP, Northern Zone (501), US feet

Measured depths are referenced to ENSIGN 145 (RKB)

North Reference: True north

ENSIGN 145 (RKB) to Mean Sea Level: 5116 feet

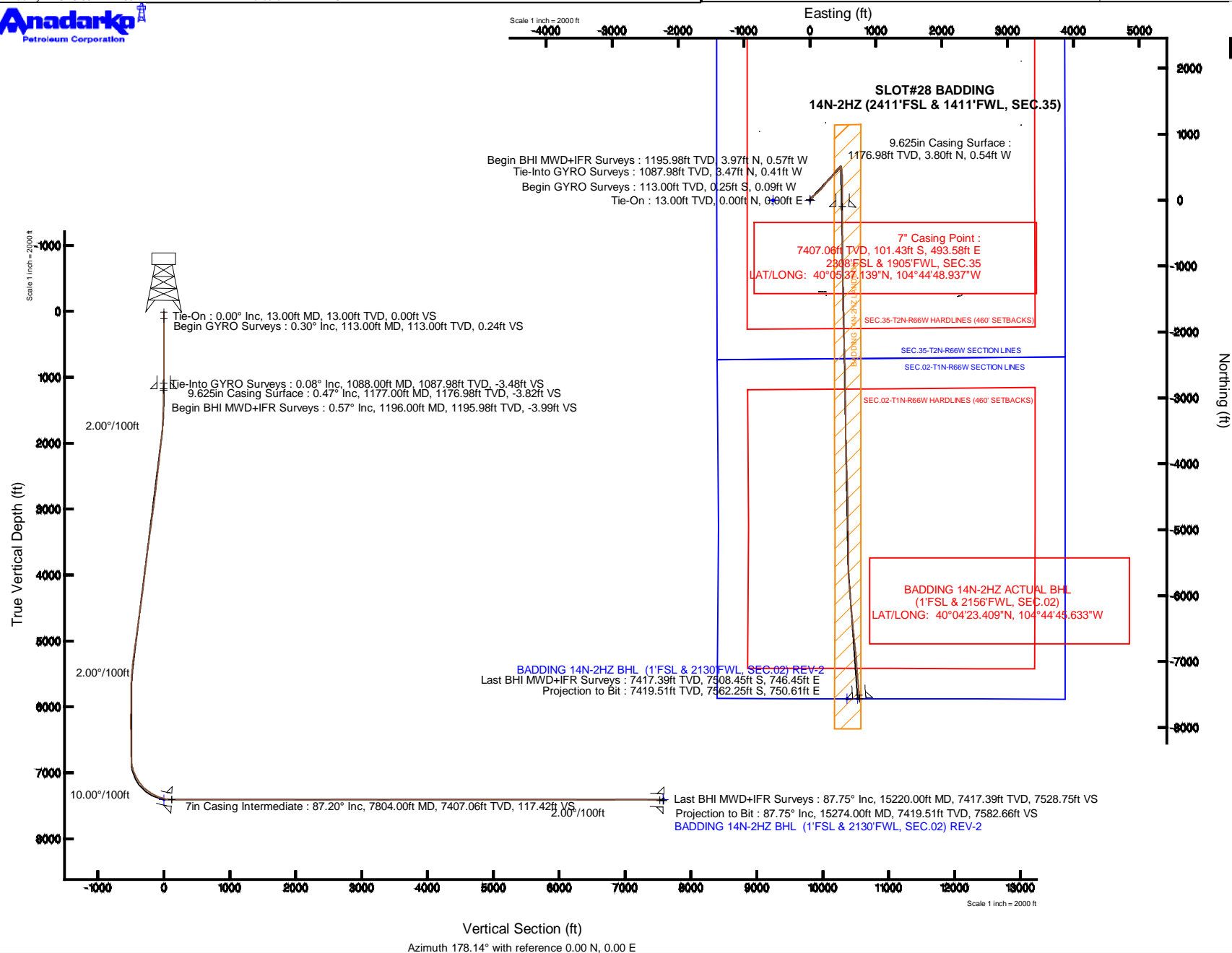
Scale: True distance

Mean Sea Level to Mud line (At Slot: SLOT#28 BADDING 14N-2HZ (2411'FSL & 1411'FWL, SEC.35)): 0 feet

Depths are in feet

Coordinates are in feet referenced to Slot

Created by: precain on 26/Feb/2014



Actual Wellpath Report

BADDING 14N-2HZ AWP

Page 1 of 8

REFERENCE WELLPATH IDENTIFICATION			
Operator	KERR-MCGEE OIL & GAS ONSHORE LP	Slot	SLOT#28 BADDING 14N-2HZ (2411'FSL & 1411'FWL, SEC.35)
Area	COLORADO	Well	BADDING 14N-2HZ
Field	WELD COUNTY (KERR MCGEE)	Wellbore	BADDING 14N-2HZ AWB
Facility	SEC.35-T2N-R66W		

REPORT SETUP INFORMATION			
Projection System	NAD83 / Lambert Colorado SP, Northern Zone (501), US feet	Software System	WellArchitect® 4.0.0
North Reference	True	User	Precain
Scale	0.999961	Report Generated	26/Feb/2014 at 13:53
Convergence at slot	n/a	Database/Source file	WellArchitectDB/BADDING_14N-2HZ_AWB.xml

WELLPATH LOCATION						
	Local coordinates		Grid coordinates		Geographic coordinates	
	North[ft]	East[ft]	Easting[US ft]	Northing[US ft]	Latitude	Longitude
Slot Location	1467.90	-2235.20	3210189.47	1277952.97	40°05'38.141"N	104°44'55.288"W
Facility Reference Pt			3212437.07	1276504.33	40°05'23.636"N	104°44'26.527"W
Field Reference Pt			3197771.84	1268891.29	40°04'09.600"N	104°47'36.000"W

WELLPATH DATUM			
Calculation method	Minimum curvature	ENSIGN 145 (RKB) to Facility Vertical Datum	5116.00ft
Horizontal Reference Pt	Slot	ENSIGN 145 (RKB) to Mean Sea Level	5116.00ft
Vertical Reference Pt	ENSIGN 145 (RKB)	ENSIGN 145 (RKB) to Mud Line at Slot (SLOT#28 BADDING 14N-2HZ (2411'FSL & 1411'FWL, SEC.35))	5116.00ft
MD Reference Pt	ENSIGN 145 (RKB)	Section Origin	N 0.00, E 0.00 ft
Field Vertical Reference	Mean Sea Level	Section Azimuth	178.14°

Actual Wellpath Report

BADDING 14N-2HZ AWP

Page 2 of 8

REFERENCE WELLPATH IDENTIFICATION

Operator	KERR-MCGEE OIL & GAS ONSHORE LP	Slot	SLOT#28 BADDING 14N-2HZ (2411'FSL & 1411'FWL, SEC.35)
Area	COLORADO	Well	BADDING 14N-2HZ
Field	WELD COUNTY (KERR MCGEE)	Wellbore	BADDING 14N-2HZ AWB
Facility	SEC.35-T2N-R66W		

WELLPATH DATA (181 stations) † = interpolated/extrapolated station

MD [ft]	Inclination [°]	Azimuth [°]	TVD [ft]	Vert Sect [ft]	North [ft]	East [ft]	Latitude	Longitude	DLS [°/100ft]	Comments
0.00†	0.000	200.580	0.00	0.00	0.00	0.00	40°05'38.141"N	104°44'55.288"W	0.00	
13.00	0.000	200.580	13.00	0.00	0.00	0.00	40°05'38.141"N	104°44'55.288"W	0.00	Tie-On
113.00	0.300	200.580	113.00	0.24	-0.25	-0.09	40°05'38.139"N	104°44'55.289"W	0.30	Begin GYRO Surveys
213.00	0.260	140.710	213.00	0.66	-0.67	-0.04	40°05'38.134"N	104°44'55.289"W	0.28	
313.00	0.250	105.370	313.00	0.91	-0.90	0.31	40°05'38.132"N	104°44'55.284"W	0.16	
413.00	0.350	348.920	413.00	0.67	-0.66	0.47	40°05'38.135"N	104°44'55.282"W	0.51	
513.00	0.650	339.300	512.99	-0.17	0.17	0.21	40°05'38.143"N	104°44'55.285"W	0.31	
613.00	0.620	344.760	612.99	-1.23	1.23	-0.14	40°05'38.153"N	104°44'55.290"W	0.07	
713.00	0.380	3.120	712.98	-2.09	2.08	-0.26	40°05'38.162"N	104°44'55.291"W	0.29	
813.00	0.240	21.740	812.98	-2.61	2.60	-0.17	40°05'38.167"N	104°44'55.290"W	0.17	
913.00	0.410	31.960	912.98	-3.10	3.10	0.10	40°05'38.172"N	104°44'55.287"W	0.18	
1013.00	0.430	277.120	1012.98	-3.45	3.45	-0.08	40°05'38.175"N	104°44'55.289"W	0.71	
1088.00	0.080	249.340	1087.98	-3.48	3.47	-0.41	40°05'38.175"N	104°44'55.293"W	0.48	Tie-Into GYRO Surveys
1196.00	0.570	350.010	1195.98	-3.99	3.97	-0.57	40°05'38.180"N	104°44'55.295"W	0.55	Begin BHI MWD+IFR Surveys
1258.00	0.450	346.460	1257.97	-4.53	4.51	-0.68	40°05'38.186"N	104°44'55.297"W	0.20	
1351.00	0.980	27.500	1350.97	-5.58	5.57	-0.40	40°05'38.196"N	104°44'55.293"W	0.76	
1445.00	1.720	23.280	1444.94	-7.56	7.58	0.53	40°05'38.216"N	104°44'55.281"W	0.79	
1539.00	2.750	29.700	1538.87	-10.76	10.84	2.20	40°05'38.248"N	104°44'55.260"W	1.13	
1632.00	3.320	33.940	1631.74	-14.84	15.01	4.81	40°05'38.289"N	104°44'55.226"W	0.66	
1726.00	4.390	39.900	1725.52	-19.73	20.03	8.64	40°05'38.339"N	104°44'55.177"W	1.21	
1819.00	6.130	42.000	1818.13	-25.97	26.45	14.24	40°05'38.402"N	104°44'55.105"W	1.88	
1913.00	7.880	43.230	1911.42	-34.14	34.87	22.02	40°05'38.486"N	104°44'55.005"W	1.87	
2006.00	9.500	42.490	2003.35	-44.13	45.18	31.57	40°05'38.587"N	104°44'54.882"W	1.75	
2100.00	10.190	49.930	2095.97	-54.82	56.25	43.17	40°05'38.697"N	104°44'54.733"W	1.54	
2193.00	10.420	53.890	2187.47	-64.64	66.50	56.26	40°05'38.798"N	104°44'54.564"W	0.80	
2287.00	11.430	52.720	2279.77	-74.82	77.15	70.54	40°05'38.903"N	104°44'54.380"W	1.10	
2380.00	11.720	52.830	2370.88	-85.62	88.44	85.40	40°05'39.015"N	104°44'54.189"W	0.31	
2473.00	10.910	52.030	2462.07	-96.27	99.56	99.86	40°05'39.125"N	104°44'54.003"W	0.89	
2567.00	9.970	50.400	2554.51	-106.49	110.22	113.15	40°05'39.230"N	104°44'53.832"W	1.05	
2660.00	9.890	48.200	2646.12	-116.54	120.68	125.30	40°05'39.334"N	104°44'53.676"W	0.42	
2754.00	10.660	43.470	2738.61	-127.84	132.37	137.30	40°05'39.449"N	104°44'53.521"W	1.21	
2847.00	9.650	42.210	2830.15	-139.48	144.39	148.46	40°05'39.568"N	104°44'53.378"W	1.11	
2941.00	10.060	42.340	2922.77	-151.03	156.29	159.28	40°05'39.685"N	104°44'53.238"W	0.44	
3031.00	10.900	40.010	3011.26	-163.00	168.62	170.05	40°05'39.807"N	104°44'53.100"W	1.05	
3121.00	10.460	40.080	3099.70	-175.41	181.39	180.78	40°05'39.933"N	104°44'52.962"W	0.49	
3211.00	9.960	39.920	3188.28	-187.30	193.61	191.03	40°05'40.054"N	104°44'52.830"W	0.56	
3301.00	10.360	40.370	3276.87	-199.09	205.74	201.27	40°05'40.174"N	104°44'52.698"W	0.45	
3391.00	11.300	38.200	3365.26	-211.83	218.84	211.96	40°05'40.304"N	104°44'52.561"W	1.14	
3481.00	10.100	36.000	3453.70	-224.81	232.15	222.06	40°05'40.435"N	104°44'52.431"W	1.41	
3570.00	8.820	34.480	3541.49	-236.47	244.09	230.51	40°05'40.553"N	104°44'52.322"W	1.47	
3661.00	9.530	41.030	3631.32	-247.61	255.52	239.40	40°05'40.666"N	104°44'52.208"W	1.39	
3751.00	9.630	39.880	3720.07	-258.68	266.92	249.12	40°05'40.779"N	104°44'52.082"W	0.24	
3841.00	9.430	45.350	3808.83	-269.31	277.88	259.19	40°05'40.887"N	104°44'51.953"W	1.03	
3931.00	9.580	44.940	3897.59	-279.44	288.36	269.73	40°05'40.991"N	104°44'51.817"W	0.18	
4021.00	9.990	44.060	3986.28	-290.00	299.27	280.44	40°05'41.098"N	104°44'51.679"W	0.48	

Actual Wellpath Report

BADDING 14N-2HZ AWP

Page 3 of 8

REFERENCE WELLPATH IDENTIFICATION			
Operator	KERR-MCGEE OIL & GAS ONSHORE LP	Slot	SLOT#28 BADDING 14N-2HZ (2411'FSL & 1411'FWL, SEC.35)
Area	COLORADO	Well	BADDING 14N-2HZ
Field	WELD COUNTY (KERR MCGEE)	Wellbore	BADDING 14N-2HZ AWB
Facility	SEC.35-T2N-R66W		

WELLPATH DATA (181 stations)										
MD [ft]	Inclination [°]	Azimuth [°]	TVD [ft]	Vert Sect [ft]	North [ft]	East [ft]	Latitude	Longitude	DLS [°/100ft]	Comments
4111.00	10.030	45.050	4074.91	-300.78	310.42	291.42	40°05'41.209"N	104°44'51.538"W	0.20	
4201.00	10.810	43.730	4163.43	-312.04	322.06	302.80	40°05'41.324"N	104°44'51.392"W	0.91	
4291.00	9.650	43.990	4252.00	-323.20	333.58	313.87	40°05'41.438"N	104°44'51.249"W	1.29	
4381.00	10.170	41.600	4340.65	-334.22	344.95	324.39	40°05'41.550"N	104°44'51.114"W	0.74	
4471.00	12.210	40.460	4428.94	-347.03	358.14	335.84	40°05'41.680"N	104°44'50.967"W	2.28	
4561.00	11.500	39.190	4517.02	-360.83	372.33	347.69	40°05'41.820"N	104°44'50.814"W	0.84	
4651.00	9.300	35.710	4605.53	-373.36	385.19	357.60	40°05'41.947"N	104°44'50.687"W	2.54	
4741.00	8.760	29.310	4694.42	-384.99	397.07	365.20	40°05'42.065"N	104°44'50.589"W	1.27	
4831.00	9.150	28.750	4783.32	-397.01	409.32	372.00	40°05'42.186"N	104°44'50.501"W	0.44	
4921.00	10.420	33.890	4872.01	-409.78	422.35	379.98	40°05'42.315"N	104°44'50.399"W	1.71	
5011.00	11.140	41.670	4960.43	-422.69	435.60	390.30	40°05'42.446"N	104°44'50.266"W	1.80	
5101.00	10.970	42.960	5048.76	-435.06	448.37	401.91	40°05'42.572"N	104°44'50.116"W	0.33	
5191.00	10.660	44.110	5137.16	-446.92	460.61	413.54	40°05'42.693"N	104°44'49.967"W	0.42	
5281.00	10.860	45.040	5225.58	-458.50	472.58	425.34	40°05'42.811"N	104°44'49.815"W	0.29	
5371.00	9.770	46.480	5314.12	-469.37	483.83	436.87	40°05'42.922"N	104°44'49.667"W	1.24	
5461.00	8.290	48.390	5403.01	-478.59	493.39	447.26	40°05'43.017"N	104°44'49.533"W	1.68	
5551.00	7.180	47.800	5492.19	-486.38	501.48	456.28	40°05'43.097"N	104°44'49.417"W	1.24	
5641.00	4.700	42.110	5581.70	-492.68	508.00	462.92	40°05'43.161"N	104°44'49.331"W	2.83	
5731.00	2.530	47.460	5671.51	-496.63	512.08	466.86	40°05'43.201"N	104°44'49.281"W	2.44	
5821.00	0.590	47.780	5761.47	-498.22	513.73	468.66	40°05'43.218"N	104°44'49.257"W	2.16	
5911.00	0.620	32.150	5851.47	-498.93	514.45	469.27	40°05'43.225"N	104°44'49.250"W	0.19	
6001.00	0.520	7.090	5941.47	-499.73	515.27	469.58	40°05'43.233"N	104°44'49.246"W	0.30	
6091.00	0.590	0.590	6031.46	-500.60	516.14	469.63	40°05'43.242"N	104°44'49.245"W	0.10	
6181.00	0.800	338.820	6121.45	-501.65	517.19	469.41	40°05'43.252"N	104°44'49.248"W	0.37	
6271.00	0.570	14.890	6211.45	-502.68	518.21	469.30	40°05'43.262"N	104°44'49.249"W	0.53	
6361.00	1.290	141.530	6301.44	-502.29	517.85	470.04	40°05'43.258"N	104°44'49.240"W	1.88	
6451.00	1.240	158.320	6391.42	-500.56	516.15	471.03	40°05'43.242"N	104°44'49.227"W	0.41	
6542.00	1.060	143.020	6482.40	-498.95	514.56	471.90	40°05'43.226"N	104°44'49.216"W	0.39	
6632.00	0.940	153.320	6572.39	-497.60	513.24	472.73	40°05'43.213"N	104°44'49.205"W	0.24	
6722.00	0.990	141.890	6662.38	-496.30	511.97	473.55	40°05'43.200"N	104°44'49.195"W	0.22	
6812.00	1.050	156.150	6752.36	-494.91	510.60	474.36	40°05'43.187"N	104°44'49.184"W	0.29	
6902.00	5.130	167.320	6842.21	-490.19	505.92	475.58	40°05'43.141"N	104°44'49.168"W	4.56	
6947.00	11.030	170.370	6886.75	-483.94	499.70	476.74	40°05'43.079"N	104°44'49.154"W	13.14	
6992.00	16.010	170.980	6930.48	-473.51	489.33	478.43	40°05'42.977"N	104°44'49.132"W	11.07	
7037.00	19.400	170.310	6973.35	-459.95	475.83	480.67	40°05'42.843"N	104°44'49.103"W	7.55	
7082.00	23.100	171.770	7015.28	-443.76	459.72	483.19	40°05'42.684"N	104°44'49.071"W	8.31	
7127.00	27.210	173.050	7056.00	-424.74	440.76	485.70	40°05'42.497"N	104°44'49.038"W	9.21	
7172.00	30.740	175.770	7095.37	-402.99	419.07	487.79	40°05'42.282"N	104°44'49.011"W	8.37	
7217.00	33.640	176.360	7133.45	-379.03	395.15	489.43	40°05'42.046"N	104°44'48.990"W	6.48	
7262.00	37.590	178.180	7170.02	-352.84	368.99	490.66	40°05'41.787"N	104°44'48.974"W	9.09	
7307.00	43.070	178.750	7204.31	-323.73	339.88	491.43	40°05'41.500"N	104°44'48.965"W	12.21	
7352.00	48.660	179.600	7235.64	-291.45	307.60	491.88	40°05'41.181"N	104°44'48.959"W	12.50	
7397.00	52.410	179.660	7264.24	-256.73	272.87	492.11	40°05'40.838"N	104°44'48.956"W	8.33	
7443.00	55.290	178.660	7291.37	-219.59	235.74	492.66	40°05'40.471"N	104°44'48.949"W	6.50	
7487.00	58.790	177.950	7315.30	-182.68	198.84	493.75	40°05'40.106"N	104°44'48.935"W	8.07	

Actual Wellpath Report

BADDING 14N-2HZ AWP

Page 4 of 8

REFERENCE WELLPATH IDENTIFICATION

Operator	KERR-MCGEE OIL & GAS ONSHORE LP	Slot	SLOT#28 BADDING 14N-2HZ (2411'FSL & 1411'FWL, SEC.35)
Area	COLORADO	Well	BADDING 14N-2HZ
Field	WELD COUNTY (KERR MCGEE)	Wellbore	BADDING 14N-2HZ AWB
Facility	SEC.35-T2N-R66W		

WELLPATH DATA (181 stations) † = interpolated/extrapolated station

MD [ft]	Inclination [°]	Azimuth [°]	TVD [ft]	Vert Sect [ft]	North [ft]	East [ft]	Latitude	Longitude	DLS [°/100ft]	Comments
7532.00	63.880	178.330	7336.88	-143.21	159.39	495.03	40°05'39.716"N	104°44'48.918"W	11.34	
7578.00	67.700	178.680	7355.74	-101.27	117.46	496.13	40°05'39.302"N	104°44'48.904"W	8.33	
7623.00	70.810	180.480	7371.68	-59.20	75.38	496.43	40°05'38.886"N	104°44'48.900"W	7.86	
7668.00	74.300	180.830	7385.17	-16.32	32.46	495.93	40°05'38.462"N	104°44'48.907"W	7.79	
7713.00	78.160	181.040	7395.88	27.32	-11.23	495.22	40°05'38.030"N	104°44'48.916"W	8.59	
7756.00	82.940	181.190	7402.94	69.67	-53.63	494.40	40°05'37.611"N	104°44'48.926"W	11.12	
7804.00†	87.196	180.772	7407.06	117.42	-101.43	493.58	40°05'37.139"N	104°44'48.937"W	8.91	7" Casing Point
7839.00	90.300	180.470	7407.83	152.38	-136.42	493.20	40°05'36.793"N	104°44'48.942"W	8.91	
7933.00	91.010	180.360	7406.75	246.30	-230.41	492.52	40°05'35.864"N	104°44'48.951"W	0.76	
8027.00	90.490	181.320	7405.52	340.18	-324.39	491.14	40°05'34.935"N	104°44'48.968"W	1.16	
8120.00	89.900	179.350	7405.21	433.11	-417.38	490.60	40°05'34.016"N	104°44'48.975"W	2.21	
8214.00	90.270	179.690	7405.07	527.08	-511.38	491.38	40°05'33.087"N	104°44'48.965"W	0.53	
8307.00	90.700	180.070	7404.28	620.03	-604.37	491.58	40°05'32.168"N	104°44'48.963"W	0.62	
8401.00	90.210	179.370	7403.53	713.99	-698.37	492.04	40°05'31.240"N	104°44'48.957"W	0.91	
8494.00	89.690	179.480	7403.61	806.97	-791.36	492.97	40°05'30.321"N	104°44'48.945"W	0.57	
8588.00	89.620	179.310	7404.18	900.95	-885.36	493.96	40°05'29.392"N	104°44'48.932"W	0.20	
8681.00	89.500	179.190	7404.89	993.93	-978.34	495.18	40°05'28.473"N	104°44'48.917"W	0.18	
8775.00	89.410	179.650	7405.79	1087.90	-1072.34	496.13	40°05'27.544"N	104°44'48.904"W	0.50	
8868.00	89.440	179.240	7406.72	1180.87	-1165.33	497.03	40°05'26.625"N	104°44'48.893"W	0.44	
8962.00	89.500	179.700	7407.59	1274.84	-1259.32	497.90	40°05'25.696"N	104°44'48.882"W	0.49	
9055.00	89.690	178.810	7408.25	1367.82	-1352.31	499.11	40°05'24.777"N	104°44'48.866"W	0.98	
9148.00	90.060	179.060	7408.45	1460.81	-1445.29	500.84	40°05'23.858"N	104°44'48.844"W	0.48	
9242.00	90.520	179.670	7407.97	1554.78	-1539.28	501.88	40°05'22.930"N	104°44'48.831"W	0.81	
9335.00	90.210	178.960	7407.38	1647.76	-1632.27	502.99	40°05'22.011"N	104°44'48.816"W	0.83	
9429.00	89.590	178.180	7407.55	1741.76	-1726.24	505.34	40°05'21.082"N	104°44'48.786"W	1.06	
9522.00	89.500	178.200	7408.29	1834.76	-1819.19	508.28	40°05'20.163"N	104°44'48.748"W	0.10	
9612.00	89.470	177.940	7409.09	1924.75	-1909.14	511.31	40°05'19.275"N	104°44'48.709"W	0.29	
9702.00	89.380	177.690	7410.00	2014.75	-1999.07	514.74	40°05'18.386"N	104°44'48.665"W	0.30	
9792.00	89.320	177.720	7411.02	2104.74	-2088.99	518.34	40°05'17.497"N	104°44'48.619"W	0.07	
9882.00	89.260	178.080	7412.13	2194.73	-2178.92	521.64	40°05'16.608"N	104°44'48.576"W	0.41	
9972.00	89.130	177.560	7413.40	2284.72	-2268.85	525.06	40°05'15.720"N	104°44'48.532"W	0.60	
10062.00	91.190	178.790	7413.15	2374.71	-2358.80	527.93	40°05'14.831"N	104°44'48.496"W	2.67	
10152.00	91.200	178.150	7411.27	2464.69	-2448.74	530.33	40°05'13.942"N	104°44'48.465"W	0.71	
10242.00	91.470	178.530	7409.17	2554.67	-2538.68	532.94	40°05'13.053"N	104°44'48.431"W	0.52	
10332.00	91.320	178.820	7406.98	2644.63	-2628.63	535.02	40°05'12.164"N	104°44'48.404"W	0.36	
10422.00	90.400	179.880	7405.63	2734.60	-2718.61	536.04	40°05'11.275"N	104°44'48.391"W	1.56	
10512.00	89.440	179.750	7405.76	2824.56	-2808.61	536.33	40°05'10.386"N	104°44'48.388"W	1.08	
10602.00	89.290	179.230	7406.75	2914.53	-2898.60	537.13	40°05'09.496"N	104°44'48.377"W	0.60	
10692.00	89.010	179.110	7408.09	3004.51	-2988.58	538.43	40°05'08.607"N	104°44'48.361"W	0.34	
10782.00	89.720	179.870	7409.09	3094.47	-3078.57	539.24	40°05'07.718"N	104°44'48.350"W	1.16	
10872.00	89.810	180.160	7409.46	3184.43	-3168.57	539.21	40°05'06.829"N	104°44'48.351"W	0.34	
10962.00	89.590	179.130	7409.93	3274.39	-3258.57	539.77	40°05'05.939"N	104°44'48.344"W	1.17	
11052.00	90.150	179.660	7410.13	3364.37	-3348.56	540.72	40°05'05.050"N	104°44'48.331"W	0.86	
11142.00	90.580	180.190	7409.56	3454.32	-3438.56	540.84	40°05'04.161"N	104°44'48.330"W	0.76	
11232.00	90.360	179.370	7408.82	3544.28	-3528.55	541.18	40°05'03.271"N	104°44'48.325"W	0.94	

Actual Wellpath Report

BADDING 14N-2HZ AWP

Page 5 of 8

REFERENCE WELLPATH IDENTIFICATION

Operator	KERR-MCGEE OIL & GAS ONSHORE LP	Slot	SLOT#28 BADDING 14N-2HZ (2411'FSL & 1411'FWL, SEC.35)
Area	COLORADO	Well	BADDING 14N-2HZ
Field	WELD COUNTY (KERR MCGEE)	Wellbore	BADDING 14N-2HZ AWB
Facility	SEC.35-T2N-R66W		

WELLPATH DATA (181 stations)

MD [ft]	Inclination [°]	Azimuth [°]	TVD [ft]	Vert Sect [ft]	North [ft]	East [ft]	Latitude	Longitude	DLS [°/100ft]	Comments
11322.00	90.180	178.110	7408.40	3634.27	-3618.53	543.16	40°05'02.382"N	104°44'48.300"W	1.41	
11412.00	89.930	177.970	7408.31	3724.27	-3708.48	546.24	40°05'01.493"N	104°44'48.260"W	0.32	
11502.00	90.150	177.920	7408.25	3814.27	-3798.42	549.47	40°05'00.604"N	104°44'48.219"W	0.25	
11592.00	90.240	177.970	7407.94	3904.27	-3888.36	552.70	40°04'59.716"N	104°44'48.177"W	0.11	
11682.00	90.580	177.770	7407.30	3994.27	-3978.30	556.04	40°04'58.827"N	104°44'48.134"W	0.44	
11772.00	90.890	178.160	7406.14	4084.26	-4068.23	559.24	40°04'57.938"N	104°44'48.093"W	0.55	
11862.00	89.810	177.470	7405.59	4174.26	-4158.16	562.67	40°04'57.049"N	104°44'48.049"W	1.42	
11952.00	89.780	177.250	7405.91	4264.25	-4248.07	566.81	40°04'56.161"N	104°44'47.996"W	0.25	
12043.00	89.930	178.500	7406.14	4355.24	-4339.00	570.19	40°04'55.262"N	104°44'47.953"W	1.38	
12133.00	90.180	178.470	7406.06	4445.24	-4428.97	572.57	40°04'54.373"N	104°44'47.922"W	0.28	
12223.00	90.330	179.290	7405.66	4535.23	-4518.95	574.33	40°04'53.484"N	104°44'47.899"W	0.93	
12312.00	90.270	179.240	7405.19	4624.21	-4607.94	575.47	40°04'52.604"N	104°44'47.885"W	0.09	
12403.00	90.210	179.370	7404.81	4715.19	-4698.93	576.57	40°04'51.705"N	104°44'47.871"W	0.16	
12493.00	90.060	179.890	7404.60	4805.16	-4788.93	577.15	40°04'50.816"N	104°44'47.863"W	0.60	
12583.00	90.120	178.730	7404.46	4895.14	-4878.92	578.24	40°04'49.927"N	104°44'47.849"W	1.29	
12673.00	90.030	178.800	7404.34	4985.14	-4968.90	580.18	40°04'49.037"N	104°44'47.824"W	0.13	
12763.00	89.780	179.650	7404.49	5075.12	-5058.89	581.39	40°04'48.148"N	104°44'47.809"W	0.98	
12853.00	89.560	179.790	7405.01	5165.08	-5148.89	581.83	40°04'47.259"N	104°44'47.803"W	0.29	
12943.00	89.780	179.230	7405.52	5255.06	-5238.89	582.60	40°04'46.369"N	104°44'47.793"W	0.67	
13033.00	89.780	179.860	7405.87	5345.03	-5328.88	583.32	40°04'45.480"N	104°44'47.784"W	0.70	
13123.00	89.900	179.890	7406.12	5434.99	-5418.88	583.51	40°04'44.591"N	104°44'47.781"W	0.14	
13213.00	89.780	180.060	7406.37	5524.94	-5508.88	583.55	40°04'43.701"N	104°44'47.781"W	0.23	
13303.00	89.530	178.710	7406.91	5614.91	-5598.87	584.52	40°04'42.812"N	104°44'47.769"W	1.53	
13393.00	90.120	177.520	7407.19	5704.91	-5688.82	587.48	40°04'41.923"N	104°44'47.730"W	1.48	
13483.00	89.930	176.380	7407.15	5794.89	-5778.69	592.27	40°04'41.035"N	104°44'47.669"W	1.28	
13573.00	89.690	175.030	7407.45	5884.81	-5868.44	599.01	40°04'40.148"N	104°44'47.582"W	1.52	
13663.00	89.810	175.110	7407.84	5974.68	-5958.10	606.74	40°04'39.262"N	104°44'47.483"W	0.16	
13753.00	89.620	175.030	7408.29	6064.55	-6047.77	614.48	40°04'38.376"N	104°44'47.383"W	0.23	
13843.00	89.590	174.960	7408.91	6154.41	-6137.42	622.33	40°04'37.490"N	104°44'47.282"W	0.08	
13933.00	89.440	174.400	7409.67	6244.24	-6227.03	630.67	40°04'36.604"N	104°44'47.175"W	0.64	
14024.00	89.410	174.290	7410.58	6335.04	-6317.58	639.64	40°04'35.709"N	104°44'47.060"W	0.13	
14114.00	89.190	174.390	7411.68	6424.84	-6407.14	648.51	40°04'34.824"N	104°44'46.946"W	0.27	
14204.00	90.210	174.420	7412.16	6514.64	-6496.71	657.29	40°04'33.939"N	104°44'46.833"W	1.13	
14294.00	90.610	174.710	7411.51	6604.46	-6586.30	665.81	40°04'33.054"N	104°44'46.723"W	0.55	
14384.00	90.370	173.850	7410.74	6694.26	-6675.85	674.78	40°04'32.169"N	104°44'46.608"W	0.99	
14474.00	90.210	173.810	7410.29	6784.00	-6765.33	684.46	40°04'31.285"N	104°44'46.483"W	0.18	
14564.00	91.100	174.260	7409.26	6873.76	-6854.83	693.81	40°04'30.400"N	104°44'46.363"W	1.11	
14654.00	90.670	174.680	7407.87	6963.57	-6944.40	702.48	40°04'29.515"N	104°44'46.252"W	0.67	
14743.00	90.000	175.260	7407.35	7052.43	-7033.06	710.28	40°04'28.639"N	104°44'46.151"W	1.00	
14834.00	91.350	176.520	7406.27	7143.35	-7123.81	716.80	40°04'27.742"N	104°44'46.067"W	2.03	
14924.00	88.210	175.110	7406.62	7233.26	-7213.56	723.37	40°04'26.855"N	104°44'45.983"W	3.82	
15014.00	87.960	174.990	7409.63	7323.08	-7303.17	731.13	40°04'25.970"N	104°44'45.883"W	0.31	
15104.00	87.840	176.070	7412.93	7412.93	-7392.84	738.14	40°04'25.084"N	104°44'45.793"W	1.21	
15194.00	87.770	175.820	7416.37	7502.79	-7482.55	744.50	40°04'24.197"N	104°44'45.711"W	0.29	
15220.00	87.750	175.580	7417.39	7528.75	-7508.45	746.45	40°04'23.941"N	104°44'45.686"W	0.93	Last BHI MWD+IFR Surveys

Actual Wellpath Report

BADDING 14N-2HZ AWP

Page 6 of 8

REFERENCE WELLPATH IDENTIFICATION

Operator	KERR-MCGEE OIL & GAS ONSHORE LP	Slot	SLOT#28 BADDING 14N-2HZ (2411'FSL & 1411'FWL, SEC.35)
Area	COLORADO	Well	BADDING 14N-2HZ
Field	WELD COUNTY (KERR MCGEE)	Wellbore	BADDING 14N-2HZ AWB
Facility	SEC.35-T2N-R66W		

WELLPATH DATA (181 stations)

MD [ft]	Inclination [°]	Azimuth [°]	TVD [ft]	Vert Sect [ft]	North [ft]	East [ft]	Latitude	Longitude	DLS [°/100ft]	Comments
15274.00	87.750	175.580	7419.51	7582.66	-7562.25	750.61	40°04'23.409"N	104°44'45.633"W	0.00	Projection to Bit

HOLE & CASING SECTIONS - Ref Wellbore: BADDING 14N-2HZ AWB Ref Wellpath: BADDING 14N-2HZ AWP

String/Diameter	Start MD [ft]	End MD [ft]	Interval [ft]	Start TVD [ft]	End TVD [ft]	Start N/S [ft]	Start E/W [ft]	End N/S [ft]	End E/W [ft]
13.5in Open Hole	13.00	1187.00	1174.00	13.00	1186.98	0.00	0.00	3.89	-0.56
9.625in Casing Surface	13.00	1177.00	1164.00	13.00	1176.98	0.00	0.00	3.80	-0.54
8.75in Open Hole	1187.00	7814.00	6627.00	1186.98	7407.47	3.89	-0.56	-111.42	493.45
7in Casing Intermediate	13.00	7804.00	7791.00	13.00	7407.06	0.00	0.00	-101.43	493.58
6.125in Open Hole	7814.00	15274.00	7460.00	7407.47	7419.51	-111.42	493.45	-7562.25	750.61

Actual Wellpath Report

BADDING 14N-2HZ AWP

Page 7 of 8

REFERENCE WELLPATH IDENTIFICATION

Operator	KERR-MCGEE OIL & GAS ONSHORE LP	Slot	SLOT#28 BADDING 14N-2HZ (2411'FSL & 1411'FWL, SEC.35)
Area	COLORADO	Well	BADDING 14N-2HZ
Field	WELD COUNTY (KERR MCGEE)	Wellbore	BADDING 14N-2HZ AWB
Facility	SEC.35-T2N-R66W		

TARGETS

Name	MD [ft]	TVD [ft]	North [ft]	East [ft]	Grid East [US ft]	Grid North [US ft]	Latitude	Longitude	Shape
SEC.02-T1N-R66W HARDLINES (460' SETBACKS)		2.00	-3.64	-560.10	3209629.44	1277944.59	40°05'38.105"N	104°45'02.495"W	polygon
SEC.02-T1N-R66W SECTION LINES		2.00	-3.64	-560.10	3209629.44	1277944.59	40°05'38.105"N	104°45'02.495"W	polygon
SEC.35-T2N-R66W HARDLINES (460' SETBACKS)		2.00	-3.64	-560.10	3209629.44	1277944.59	40°05'38.105"N	104°45'02.495"W	polygon
SEC.35-T2N-R66W SECTION LINES		2.00	-3.64	-560.10	3209629.44	1277944.59	40°05'38.105"N	104°45'02.495"W	polygon
SHAHER USX W 35-6 (150' CIRCLE)		7318.00	1184.02	216.22	3210395.64	1279138.73	40°05'49.842"N	104°44'52.506"W	circle
SHAHER 31-35 (150' CIRCLE)		7348.00	2474.36	1555.29	3211723.68	1280440.32	40°06'02.593"N	104°44'35.274"W	circle
SHAHER USX W 35-7 (150' CIRCLE)		7387.00	1198.39	2072.52	3212251.68	1279168.83	40°05'49.983"N	104°44'28.619"W	circle
SHAHER 12-35 (150' CIRCLE)		7396.00	1097.33	-845.34	3209334.90	1279043.06	40°05'48.985"N	104°45'06.166"W	circle
BADDING USX W 35-3 (150' CIRCLE)		7405.00	2138.85	435.84	3210607.16	1280095.35	40°05'59.277"N	104°44'49.679"W	circle
BADDING 14N-2HZ BHL (1'FSL & 2130'FWL, SEC.02) REV-2		7406.00	-7562.36	725.08	3210978.56	1270397.34	40°04'23.408"N	104°44'45.961"W	point
BADDING 14N-2HZ BHL ON PLAT (1'FSL & 1970'FWL, SEC.02) REV-1		7406.00	-7562.36	565.08	3210818.57	1270395.99	40°04'23.408"N	104°44'48.019"W	point
BADDING 14N-2HZ LANDBOX		7406.00	0.00	0.00	3210189.47	1277952.97	40°05'38.141"N	104°44'55.288"W	polygon

WELLPATH COMPOSITION - Ref Wellbore: BADDING 14N-2HZ AWB Ref Wellpath: BADDING 14N-2HZ AWP

Start MD [ft]	End MD [ft]	Positional Uncertainty Model	Log Name/Comment	Wellbore
13.00	1088.00	Generic gyro - continuous (Standard)	MS ENERGEY SERVICES GYRO SUVEYS <113-1088>	BADDING 14N-2HZ AWB
1088.00	7756.00	NaviTrak (MAGCORR,IFR)	BHI MWD+IFR SURVEYS 8 3/4" HOLE <1196-7756>	BADDING 14N-2HZ AWB
7756.00	15220.00	NaviTrak (MAGCORR,IFR)	BHI MWD+IFR SURVEYS 6 1/8" HOLE <7839-15220>	BADDING 14N-2HZ AWB
15220.00	15274.00	Blind Drilling (std)	Projection to bit	BADDING 14N-2HZ AWB

Actual Wellpath Report

BADDING 14N-2HZ AWP

Page 8 of 8

REFERENCE WELLPATH IDENTIFICATION			
Operator	KERR-MCGEE OIL & GAS ONSHORE LP	Slot	SLOT#28 BADDING 14N-2HZ (2411'FSL & 1411'FWL, SEC.35)
Area	COLORADO	Well	BADDING 14N-2HZ
Field	WELD COUNTY (KERR MCGEE)	Wellbore	BADDING 14N-2HZ AWB
Facility	SEC.35-T2N-R66W		

WELLPATH COMMENTS				
MD [ft]	Inclination [°]	Azimuth [°]	TVD [ft]	Comment
13.00	0.000	200.580	13.00	Tie-On
113.00	0.300	200.580	113.00	Begin GYRO Surveys
1088.00	0.080	249.340	1087.98	Tie-Into GYRO Surveys
1196.00	0.570	350.010	1195.98	Begin BHI MWD+IFR Surveys
7804.00	87.196	180.772	7407.06	7" Casing Point
15220.00	87.750	175.580	7417.39	Last BHI MWD+IFR Surveys
15274.00	87.750	175.580	7419.51	Projection to Bit