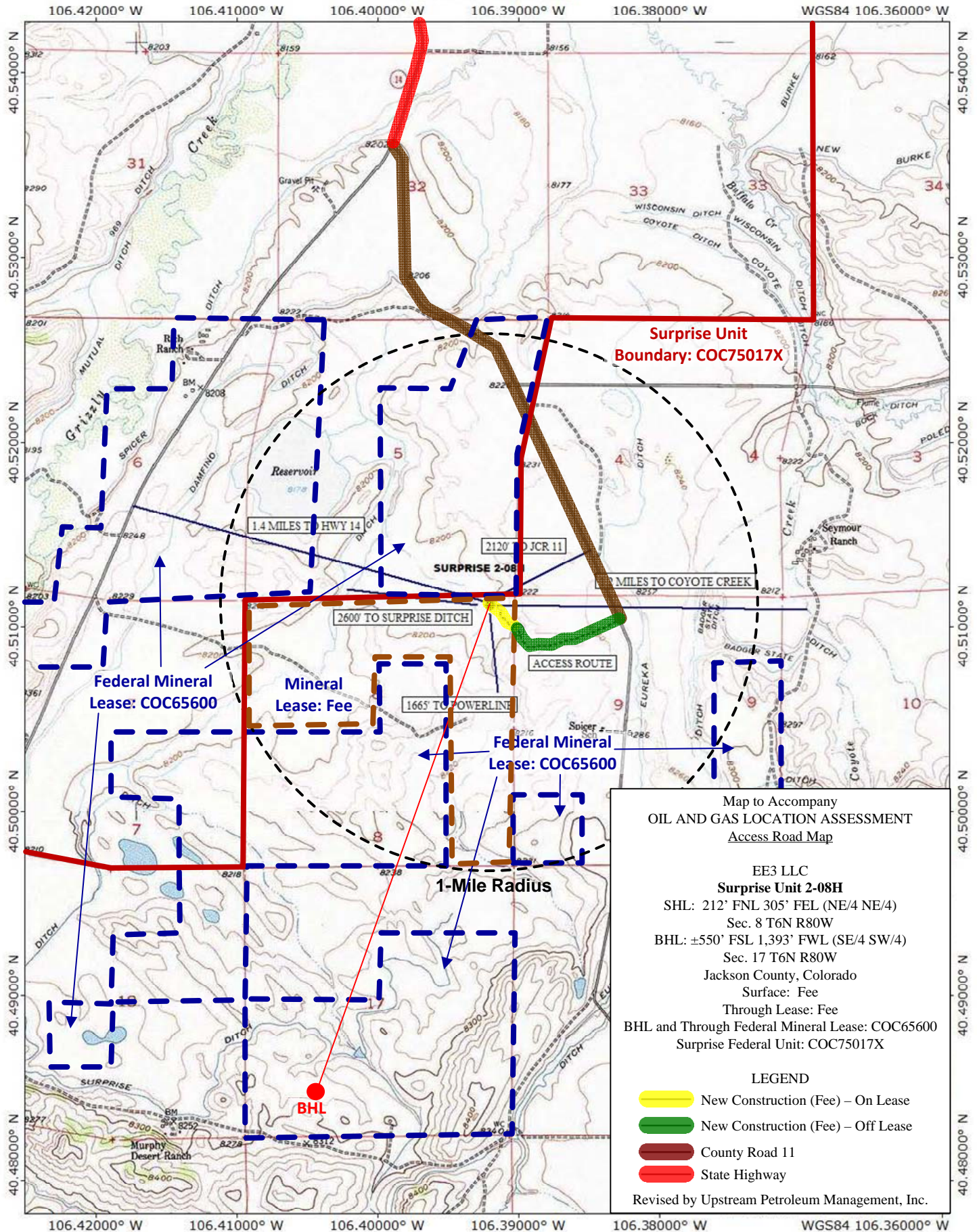


Surprise 2-08H Vicinity Map



Map to Accompany
OIL AND GAS LOCATION ASSESSMENT
Access Road Map

EE3 LLC
Surprise Unit 2-08H
 SHL: 212' FNL 305' FEL (NE/4 NE/4)
 Sec. 8 T6N R80W
 BHL: ±550' FSL 1,393' FWL (SE/4 SW/4)
 Sec. 17 T6N R80W
 Jackson County, Colorado
 Surface: Fee
 Through Lease: Fee
 BHL and Through Federal Mineral Lease: COC65600
 Surprise Federal Unit: COC75017X

LEGEND

- New Construction (Fee) – On Lease
- New Construction (Fee) – Off Lease
- County Road 11
- State Highway

Revised by Upstream Petroleum Management, Inc.

Surprise 2-08H

106.48333° W 106.45000° W 106.41667° W 106.38333° W 106.35000° W WGS84 106.30000° W

Map to Accompany OIL AND GAS LOCATION ASSESSMENT Area Map

EE3 LLC

Surprise Unit 2-08H

SHL: 212' FNL 305' FEL (NE/4 NE/4)

Sec. 8 T6N R80W

BHL: ±550' FSL 1,393' FWL (SE/4 SW/4)

Sec. 17 T6N R80W

Jackson County, Colorado

Surface: Fee

Through Lease: Fee

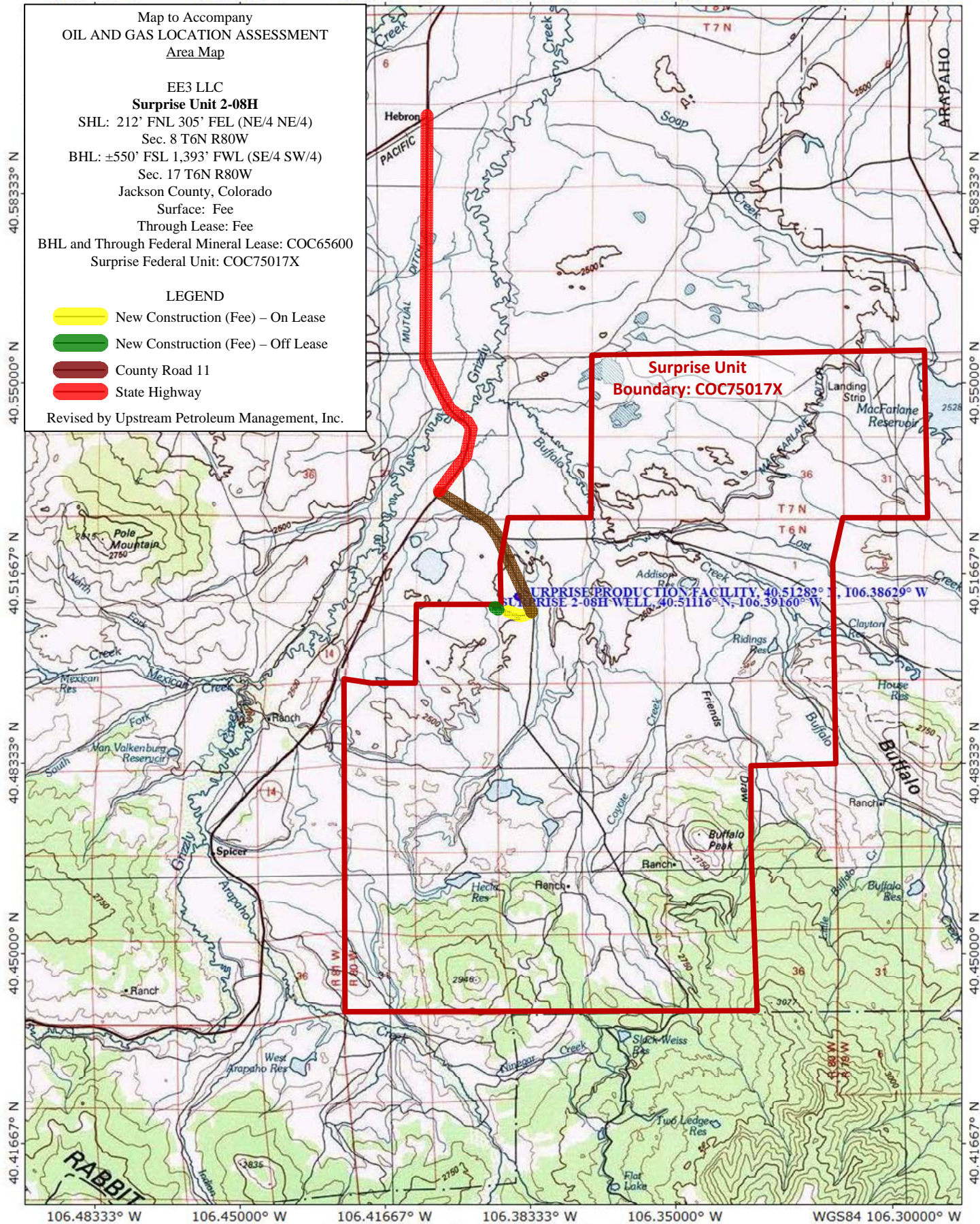
BHL and Through Federal Mineral Lease: COC65600

Surprise Federal Unit: COC75017X

LEGEND

- New Construction (Fee) – On Lease
- New Construction (Fee) – Off Lease
- County Road 11
- State Highway

Revised by Upstream Petroleum Management, Inc.



TN MN
10°

0.0 0.5 1.0 1.5 2.0 2.5 3.0 3.5 miles

Map created with TOPO!® ©2003 National Geographic (www.nationalgeographic.com/topo)