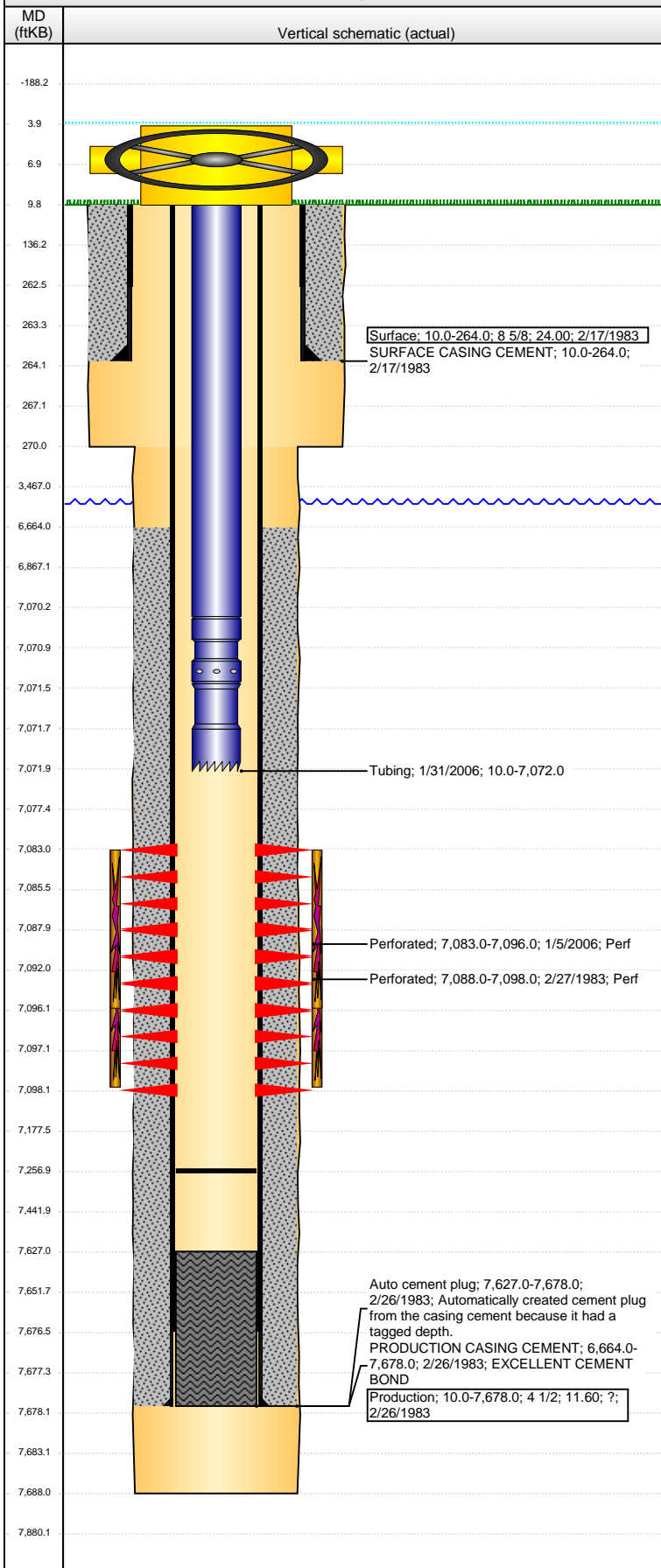


Well Name: MEL BICKLING 31-22

VERTICAL - ORIGINAL HOLE, 3/11/2014 2:47:30 PM



Well Header

API	Business Unit	District	Well Config
05-123-11059	WATTENBERG	15	VERTICAL
Original KB Elevation (ft)	KB - GL / MSL (ftKB)	Spud Date	P & A Date
4,750.00	10.00	2/16/1983	

Comment
DISCREPANCY: DR RPT TD DATE 2/25/1983; ST RPT TD DATE 2/26/1983

Directions To Well

Congressional Location

Quarter 1	Quarter 2	Quarter 3	Quarter 4	Section	Township	Twnshp N...	Range	Rng E/W Dir
		NW	NE	22	6	N	65	W

Bottom Hole Location

North-South Distance (ft)	From N or S Line	East-West Distance (ft)	From E or W Line
---------------------------	------------------	-------------------------	------------------

Plug Back Total Depths

Date	Depth (ftKB)	Method	Com
2/27/1983	7,627.0	CASED HOLE LOG	DEPTH LOGGER ON CBL
1/4/2005	7,257.0	TAG	TAG TO LAND TUBING

Wellbore Sections

Section Des	Size (in)	Act Top, MD (ftKB)	Act Btm, MD (ftKB)
SURFACE	12 1/4	10.0	270.0
PRODUCTION	7 7/8	270.0	7,688.0

Zone Statuses

Zone Name	Status Date	Status	Job
CODELL	4/1/1983	PR	DRILLING/COMPLETION - ORIGINAL, 2/16/1983 00:00
CODELL	3/10/2006	PR	RE-FRAC, 12/30/2005 00:00

Casing Strings

Surface, 264.0ftKB

Casing Description	Run Date	OD (in)	Wt/Len (l...)	Grade	Top, MD (ft...)	MD (ftKB)
Surface	2/17/1983	8 5/8	24.00		10.0	264.0

Production, 7,678.0ftKB

Casing Description	Run Date	OD (in)	Wt/Len (l...)	Grade	Top, MD (ft...)	MD (ftKB)
Production	2/26/1983	4 1/2	11.60	?	10.0	7,678.0

Cement

Description	Top Depth (ftKB)	Bottom Depth (ftKB)
SURFACE CASING CEMENT	10.0	264.0
Description	Top Depth (ftKB)	Bottom Depth (ftKB)
PRODUCTION CASING CEMENT	6,664.0	7,678.0

Tubing Components

Item Des	OD (in)	Wt (lb/ft)	Grade	Jts	Len (ft)	Btm (ftKB)	Btm (TVD) (ftKB)
Tubing	2 3/8	4.70	J-55	217	7,060.35	7,070.4	
Seal Nipple	2 3/8			1	1.10	7,071.5	
Notched collar	2 3/8			1	0.55	7,072.0	

Perforation Data

Zone	Bnch/St g	Entered Shot Total	Top (ftKB)	Btm (ftKB)	Date
CODELL, ORIGINAL HOLE		52	7,083.00	7,096.00	1/5/2006
CODELL, ORIGINAL HOLE		21	7,088.00	7,098.00	2/27/1983

Stimulations & Treatments

Date	Zone	Primary Job Type
2/28/1983	CODELL, ORIGINAL HOLE	DRILLING/COMPLETION - ORIGINAL
Technical Result	Tech Result Details	Tech Result Note

Comment

Date	Zone	Primary Job Type
1/27/2006	CODELL, ORIGINAL HOLE	RE-FRAC
Technical Result	Tech Result Details	Tech Result Note

Comment

Other In Hole

Run Date	Des	OD (in)	Top (ftKB)	Btm (ftKB)

Logs

Date	Type	Top, MD (ftKB)	Btm, MD (ftKB)
2/24/1983	COMPENSATED DENSITY	2,673.0	7,677.0
2/24/1983	INDUCTION	264.0	7,681.0

Well Name: MEL BICKLING 31-22

VERTICAL - ORIGINAL HOLE, 3/11/2014 2:47:32 PM

Logs

